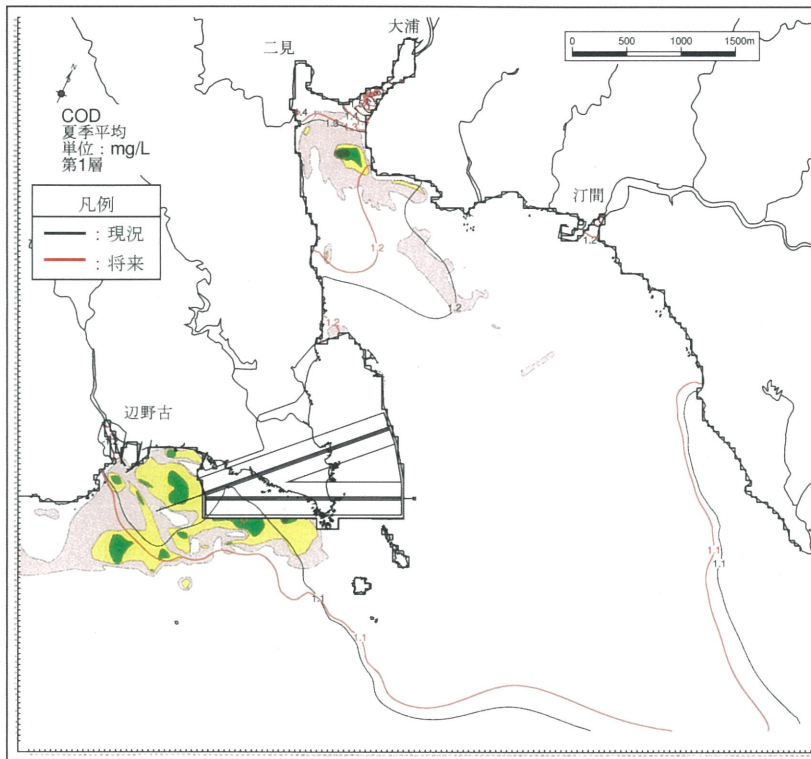


(COD 分布)



(COD 変化域)

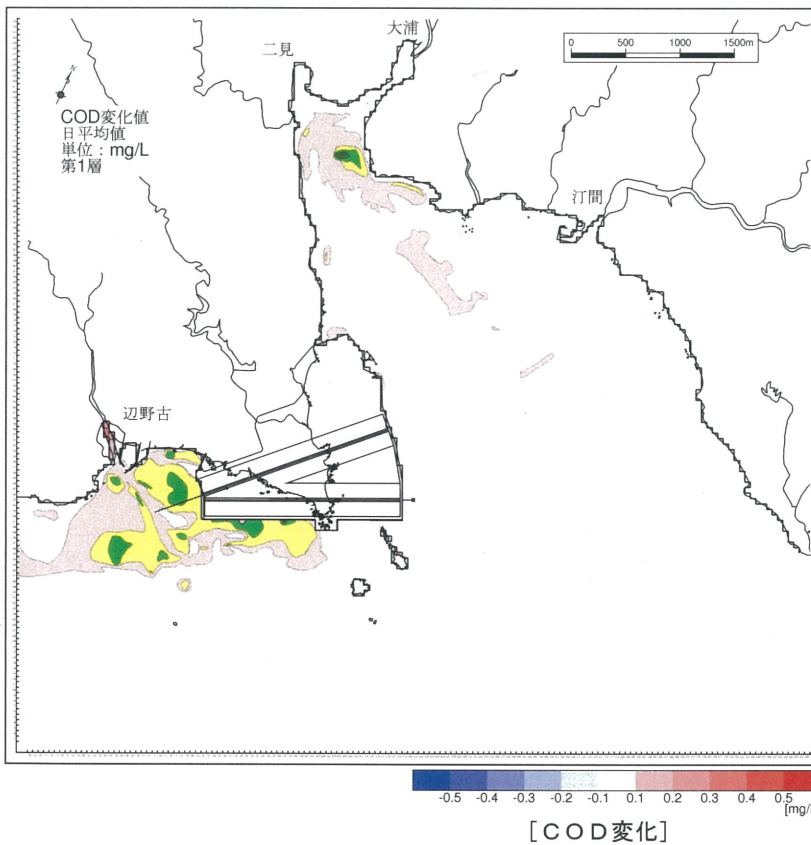
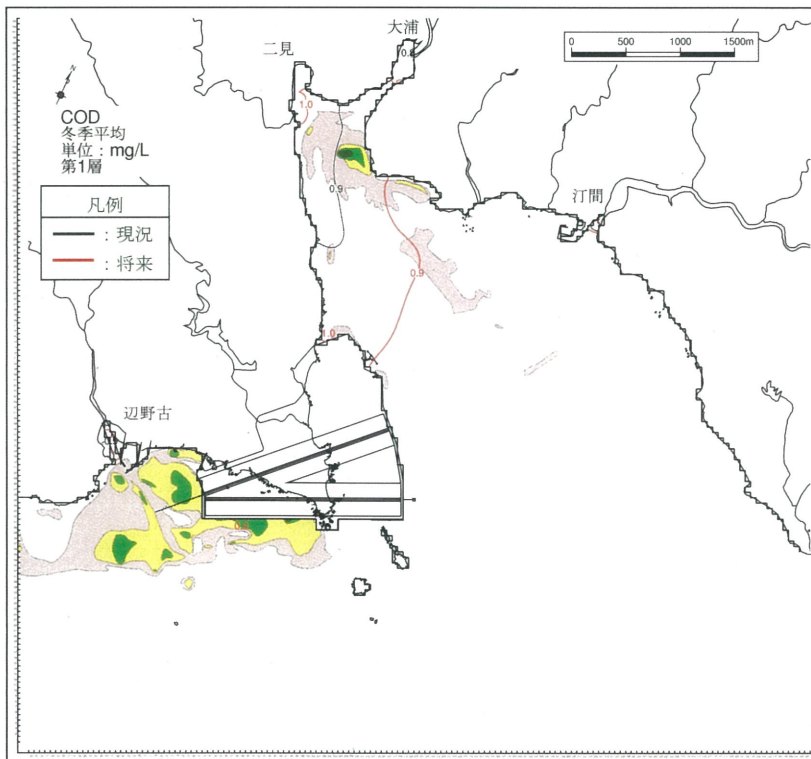
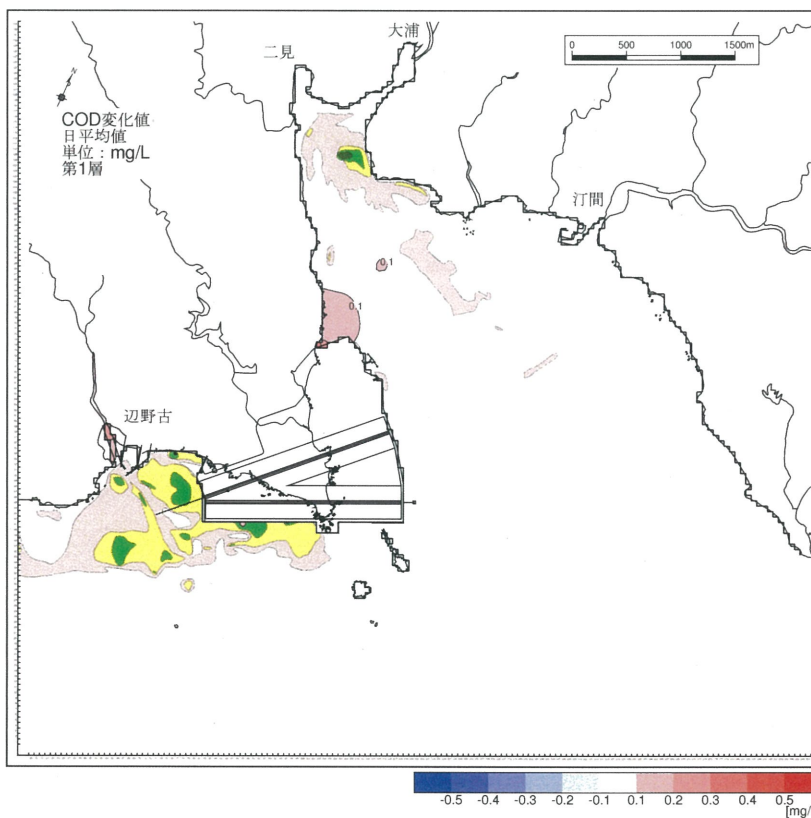


図-6. 15. 2. 2. 39 供用時の COD 変化 (夏季、第 1 層) と海草類の生育範囲





(COD 分布)



(COD 変化域)



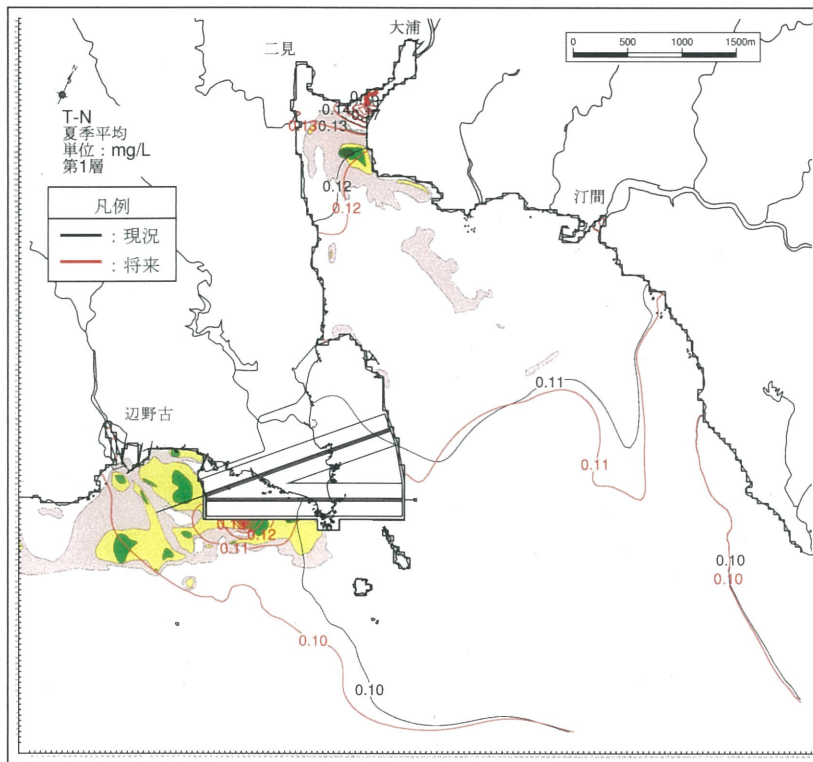
[海草類の生育範囲]

-  被度5~25%
-  被度25~50%
-  被度50~75%
-  被度75%以上

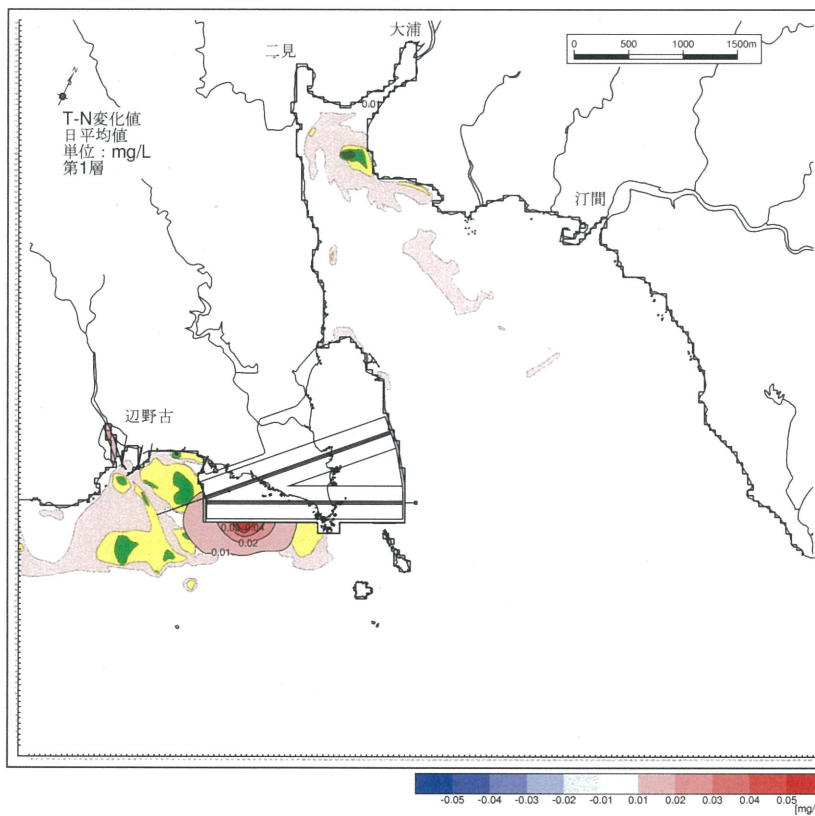
[COD変化]

図-6. 15. 2. 2. 40 供用時の COD 変化 (冬季、第 1 層) と海草類の生育範囲

(T-N 分布)



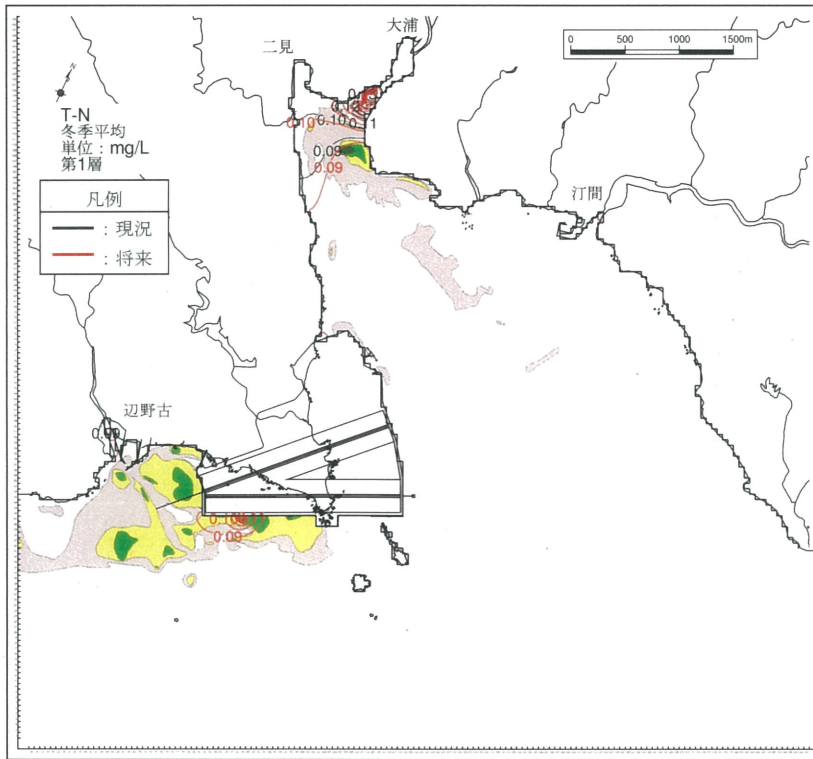
(T-N 変化域)



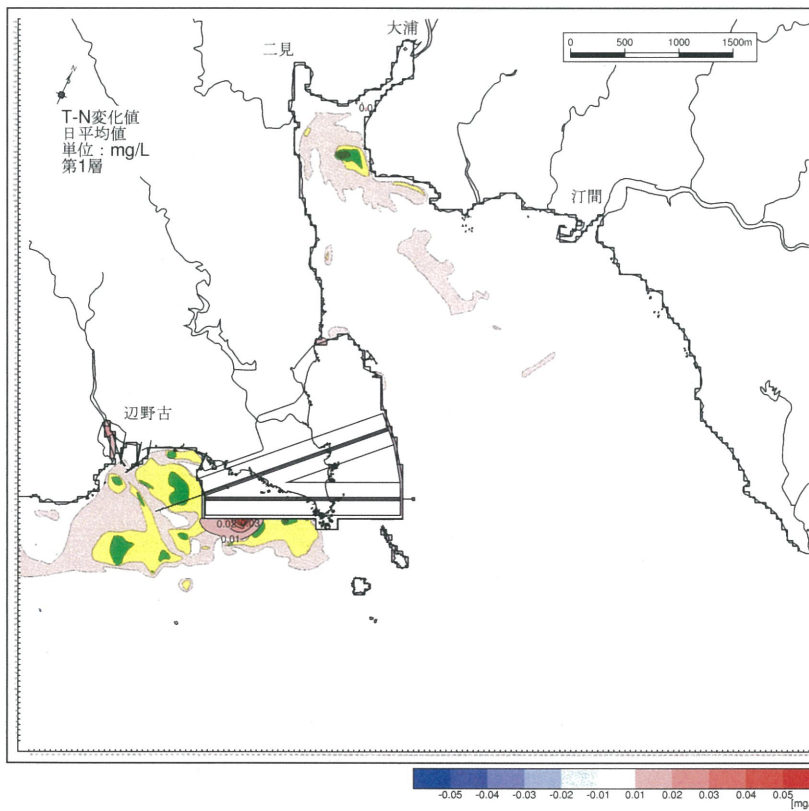
[T-N 変化]

図-6.15.2.2.41 供用時の T-N 変化 (夏季、第1層) と海草類の生育範囲

(T-N 分布)



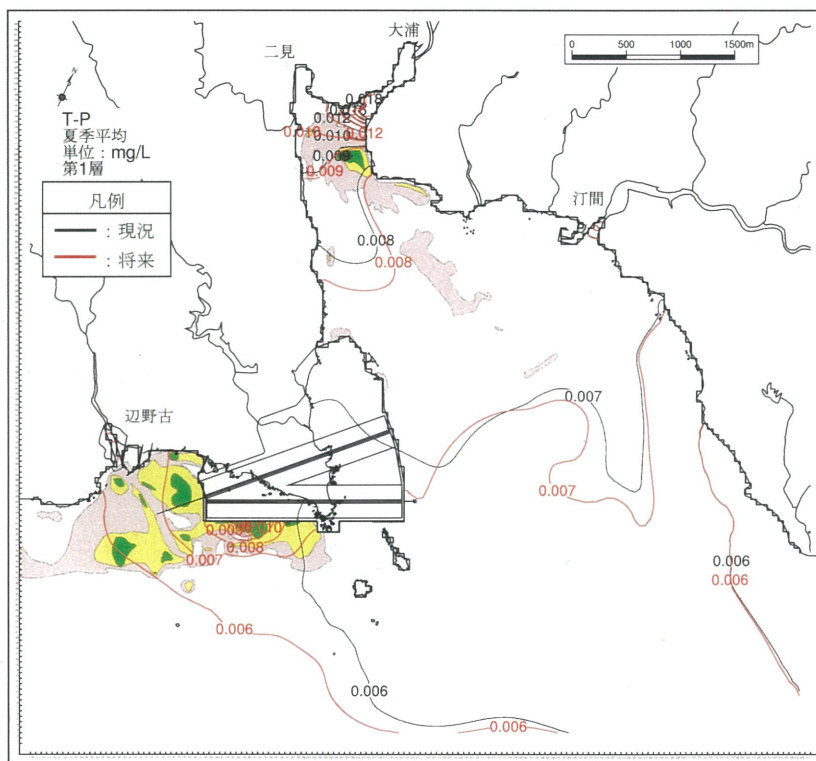
(T-N 変化域)



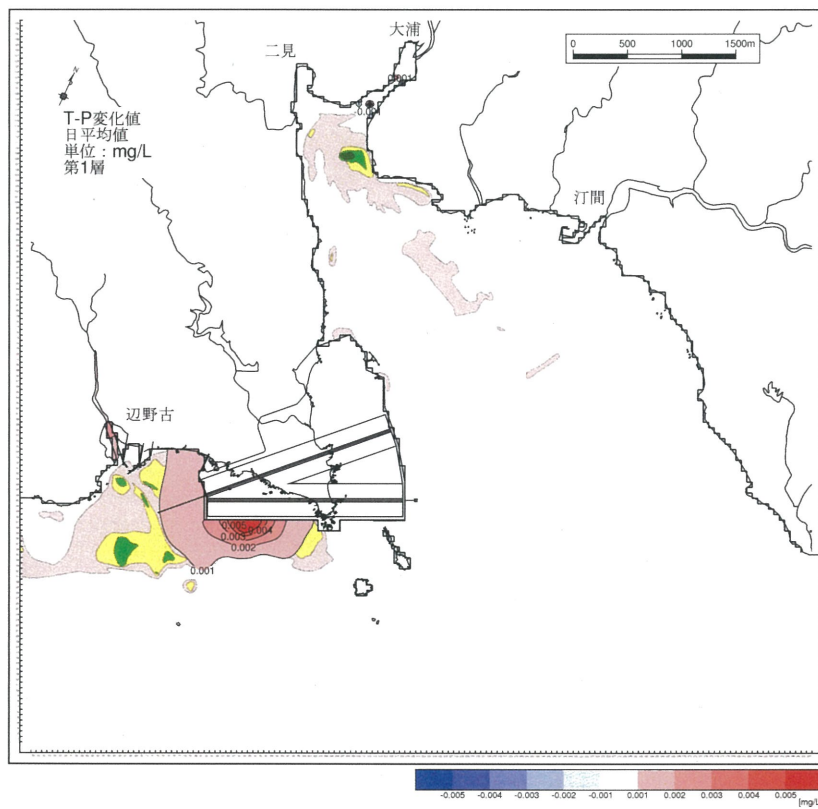
[T-N変化]

図-6.15.2.2.42 供用時の T-N 変化 (冬季、第1層) と海草類の生育範囲

(T-P 分布)



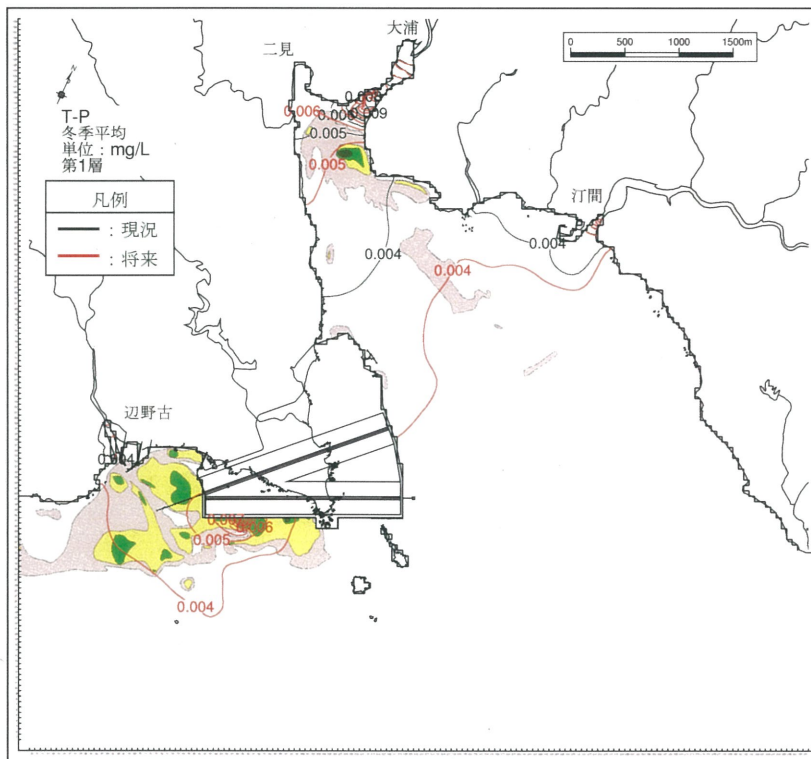
(T-P 変化域)



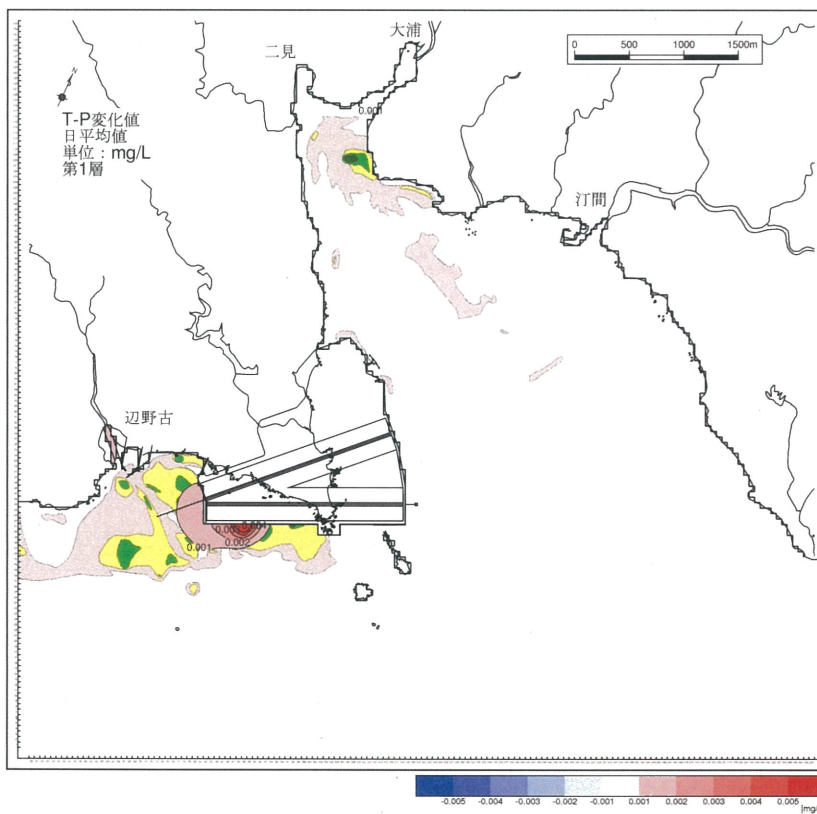
[T-P 変化]

図-6.15.2.2.43 供用時の T-P 変化 (夏季、第1層) と海草類の生育範囲

(T-P 分布)



(T-P 変化域)



[T-P 変化]

図-6. 15. 2. 2. 44 供用時の T-P 変化 (冬季、第 1 層) と海草類の生育範囲