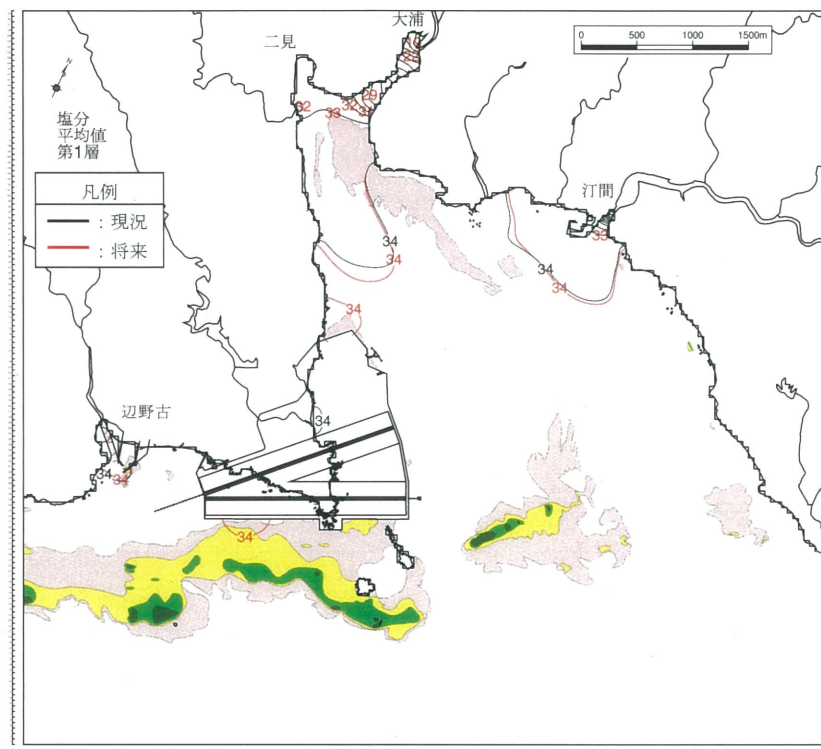


(塩分分布)



(塩分変化域)

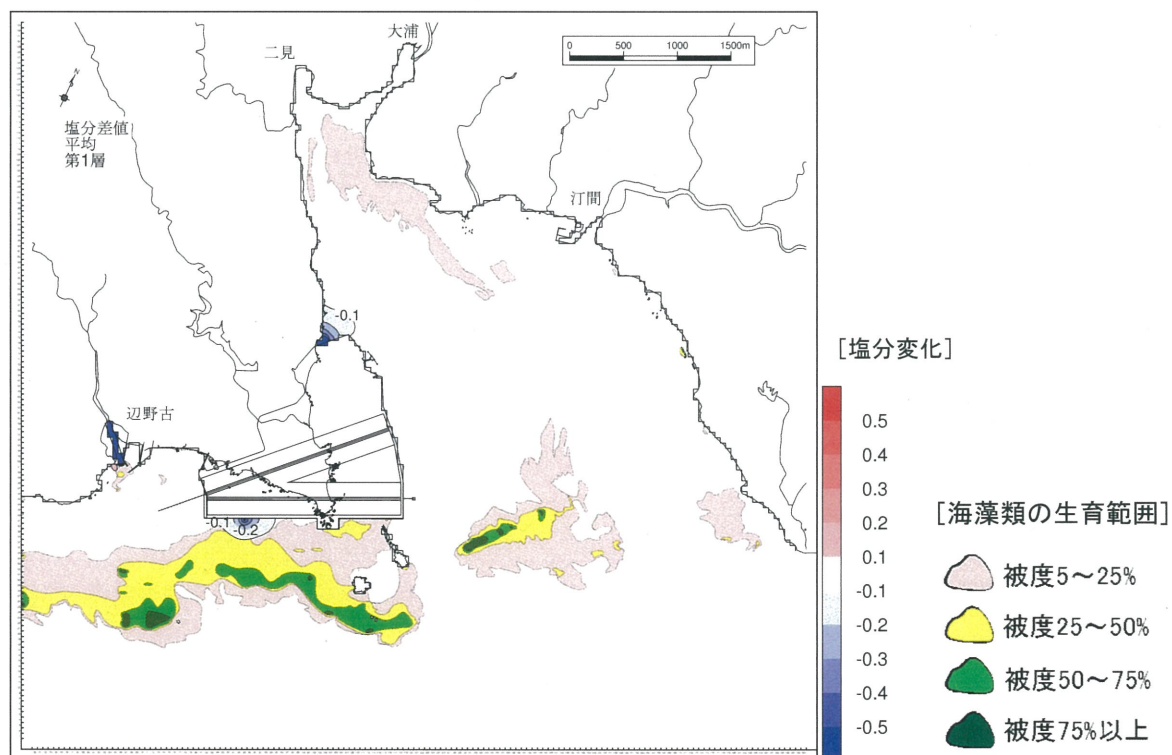
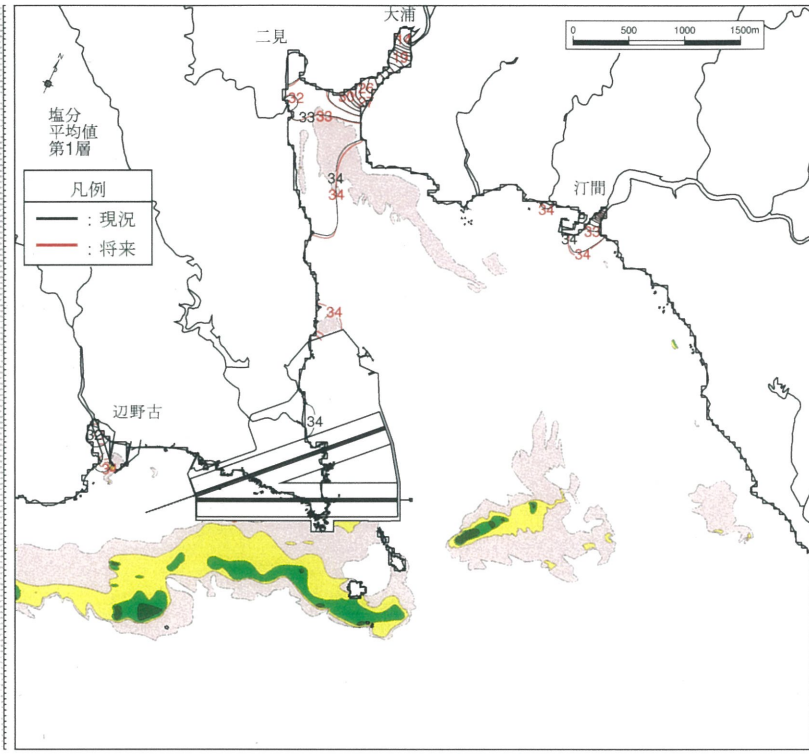


図-6.15.2.2.13 供用時の塩分変化（夏季、第1層）と海藻類の生育範囲

(塩分分布)



(塩分変化域)

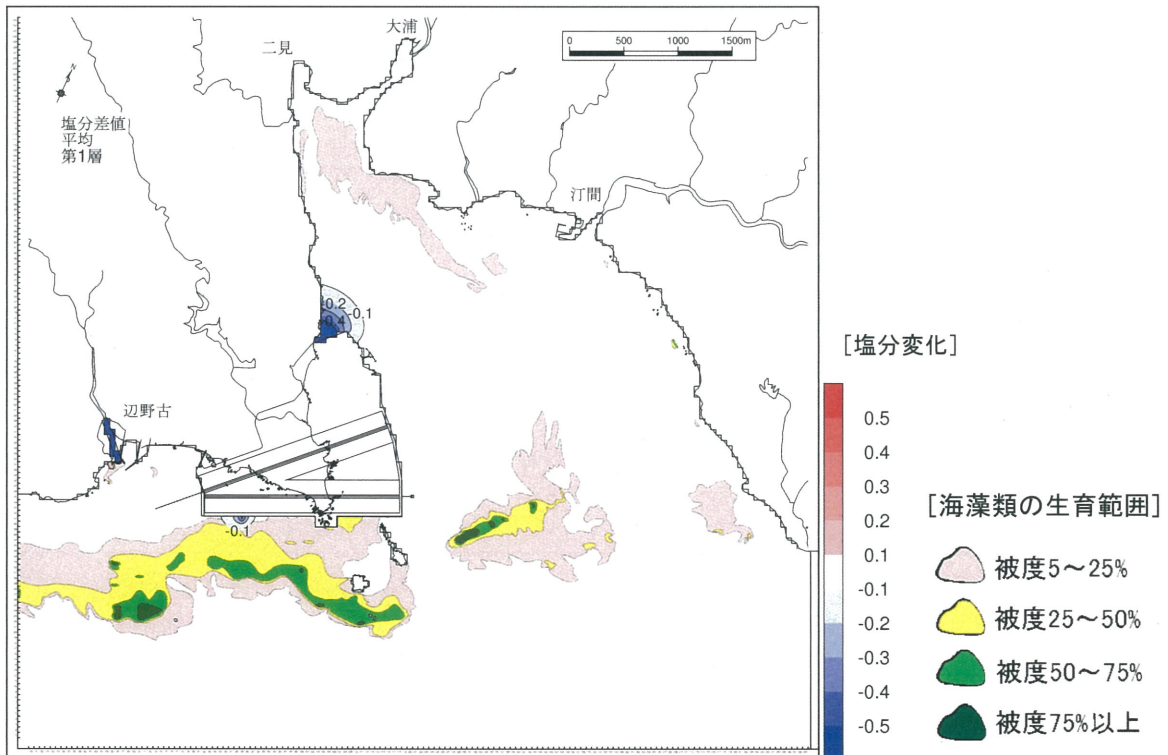
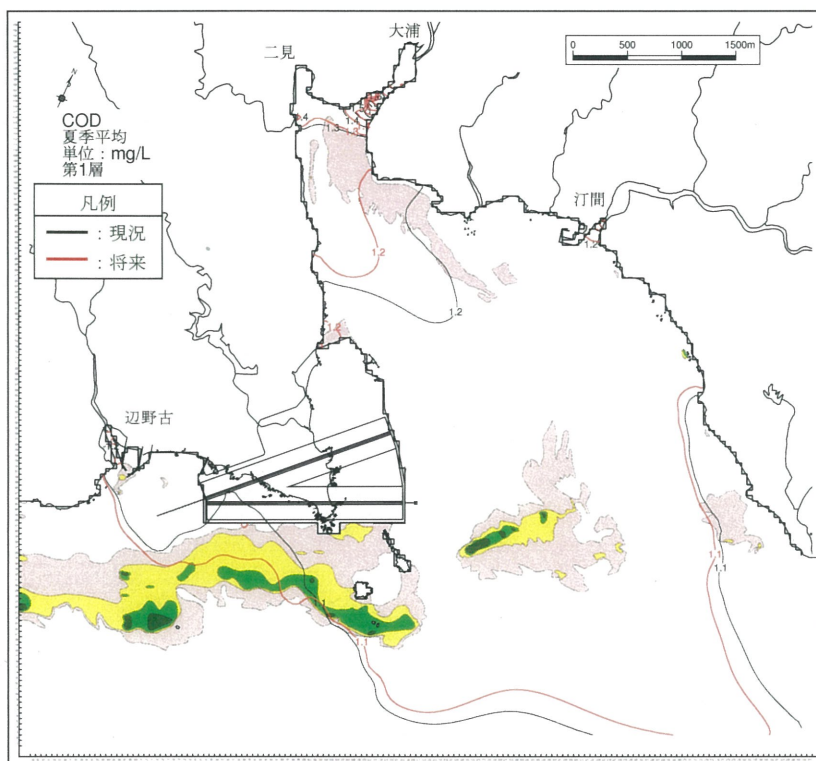
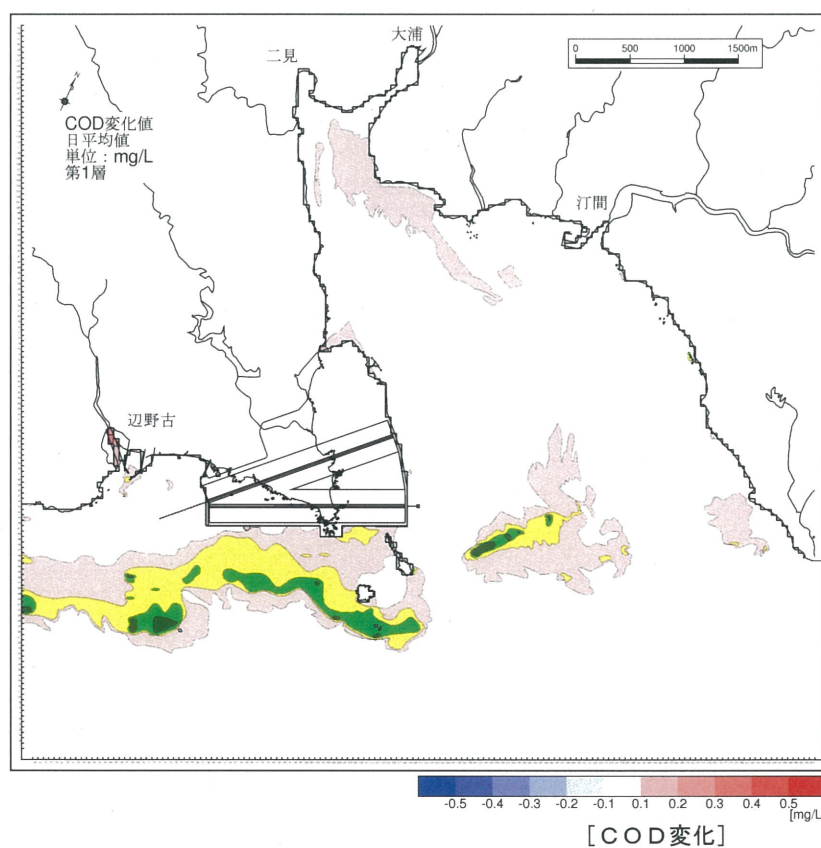


図-6.15.2.2.14 供用時の塩分変化（冬季、第1層）と海藻類の生育範囲

(COD 分布)



(COD 変化域)



[海藻類の生育範囲]





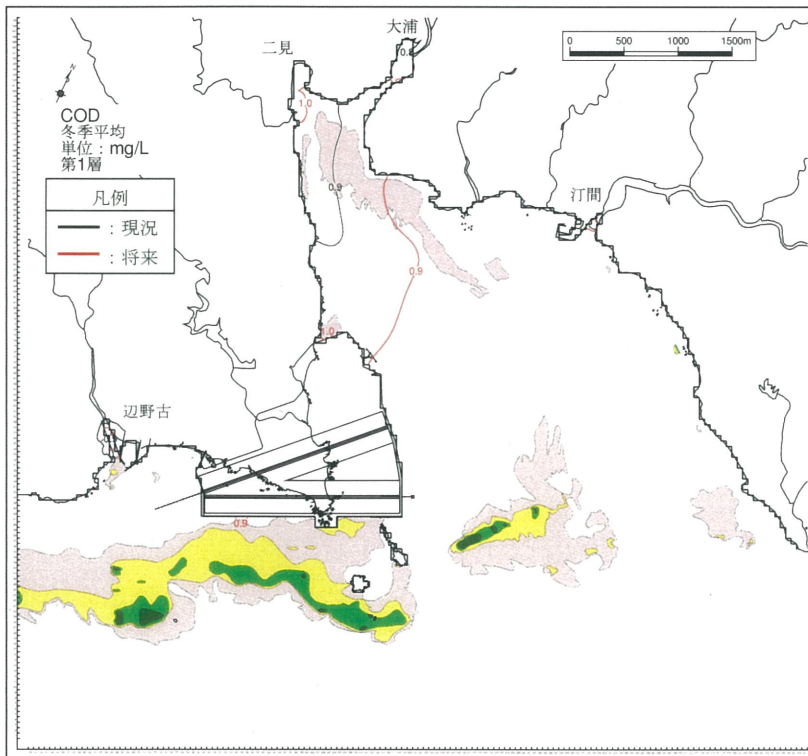
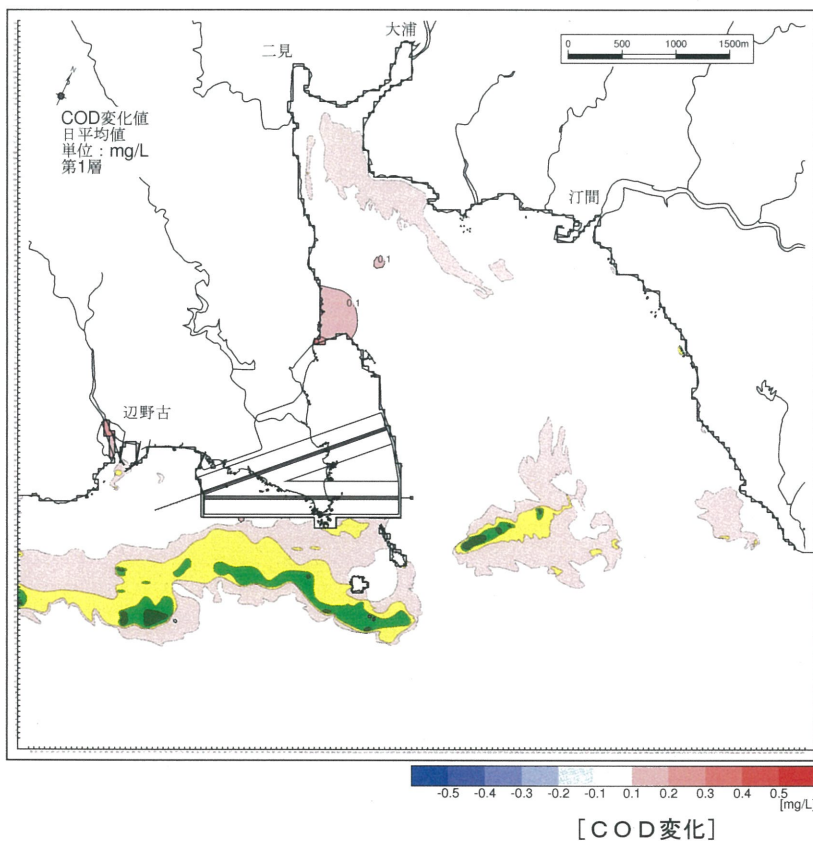
-  被度5~25%
-  被度25~50%
-  被度50~75%
-  被度75%以上

図-6.15.2.2.15 供用時のCOD変化(夏季、第1層)と海藻類の生育範囲

(COD 分布)



(COD 変化域)



[海藻類の生育範囲]





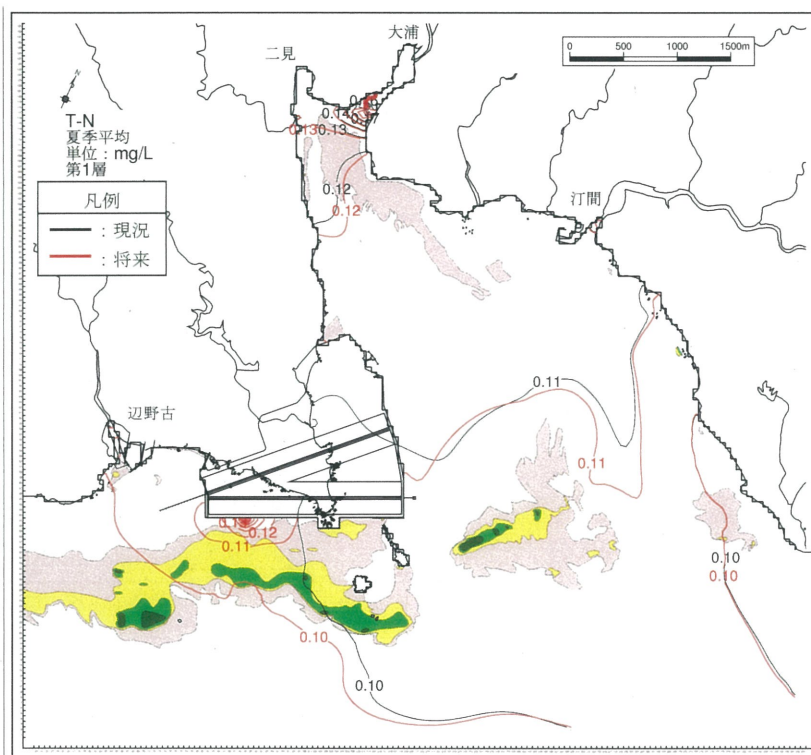
-  被度5~25%
-  被度25~50%
-  被度50~75%
-  被度75%以上

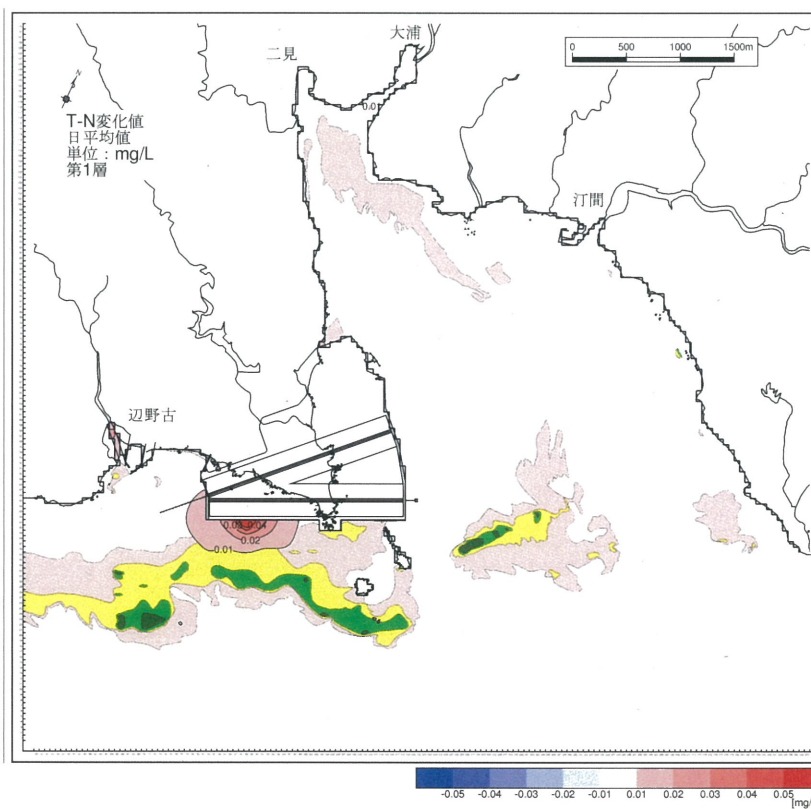
図-6. 15. 2. 2. 16 供用時の COD 変化 (冬季、第 1 層) と海藻類の生育範囲



(T-N 分布)



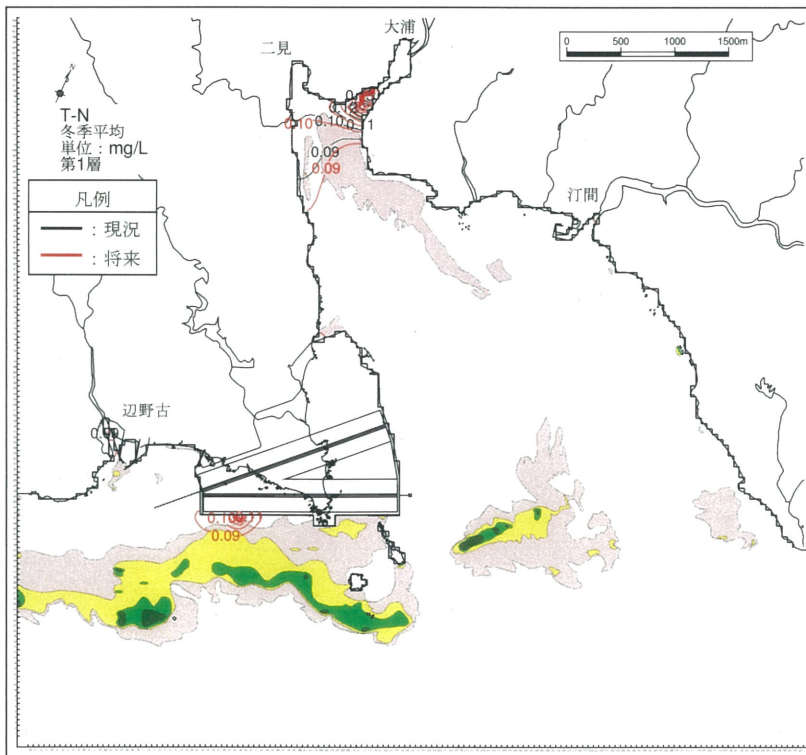
(T-N 変化域)



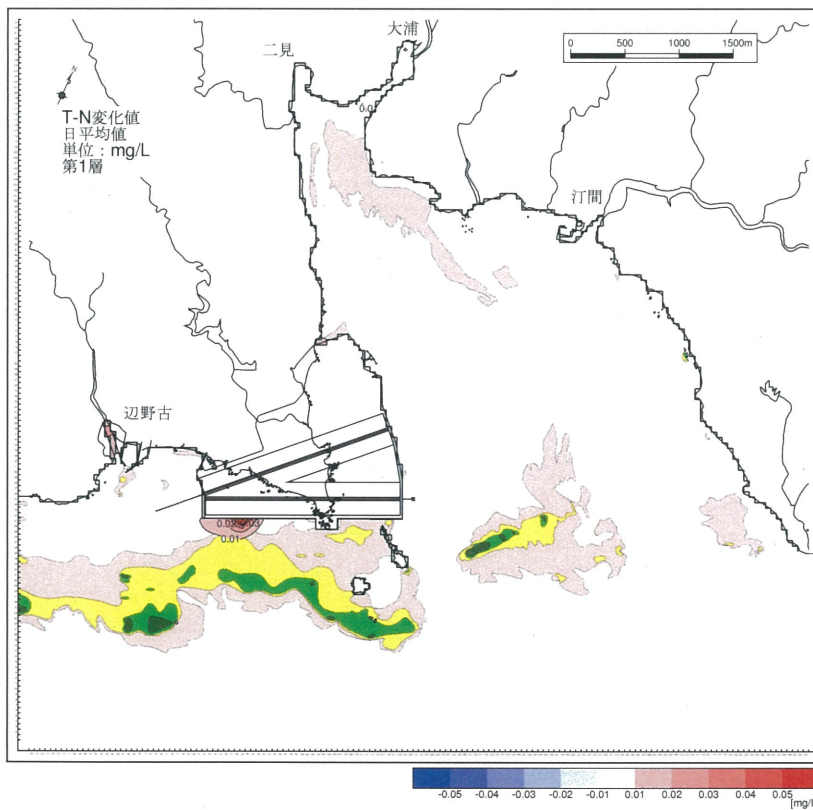
[T-N 変化]

図-6.15.2.2.17 供用時の T-N 変化 (夏季、第1層) と海藻類の生育範囲

(T-N 分布)



(T-N 変化域)



[T-N変化]

図-6.15.2.2.18 供用時の T-N 変化 (冬季、第1層) と海藻類の生育範囲