

図-6.6.21(5) 供用時の水質濃度分布（夏季T-P、第5層[10~15m]）

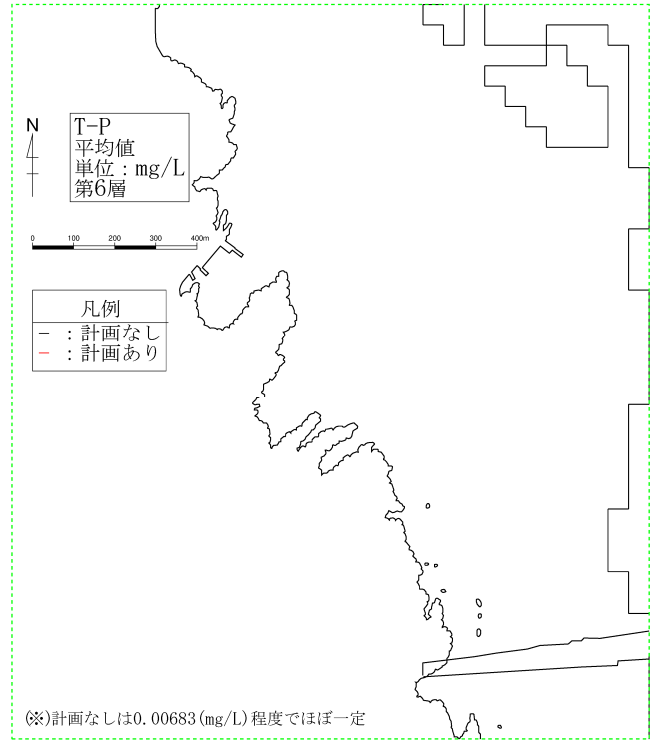
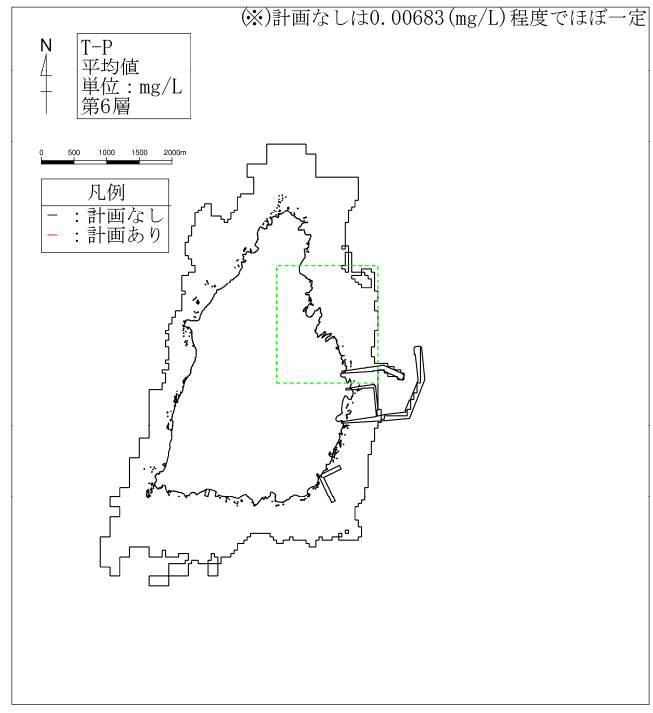


図-6.6.21(6) 供用時の水質濃度分布 (夏季T-P、第6層[15~20m])

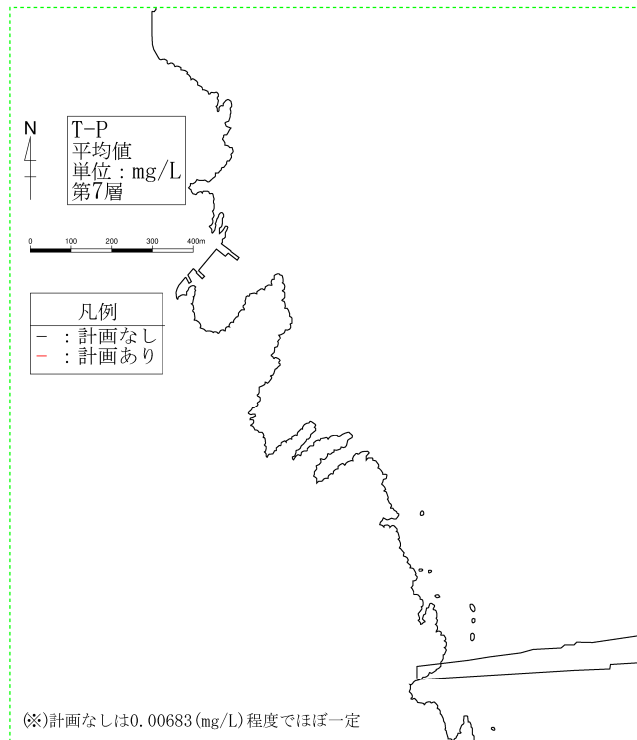
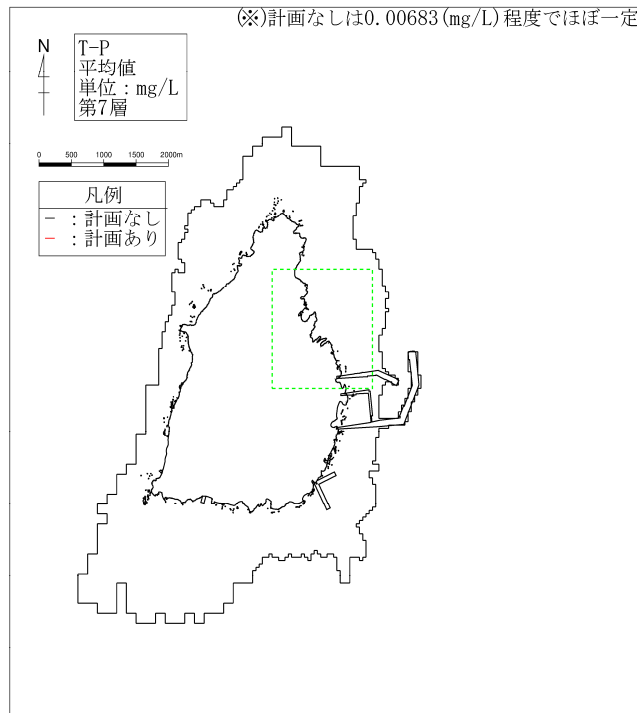


図-6.6.21(7) 供用時の水質濃度分布 (夏季 T-P、第7層[20~30m])

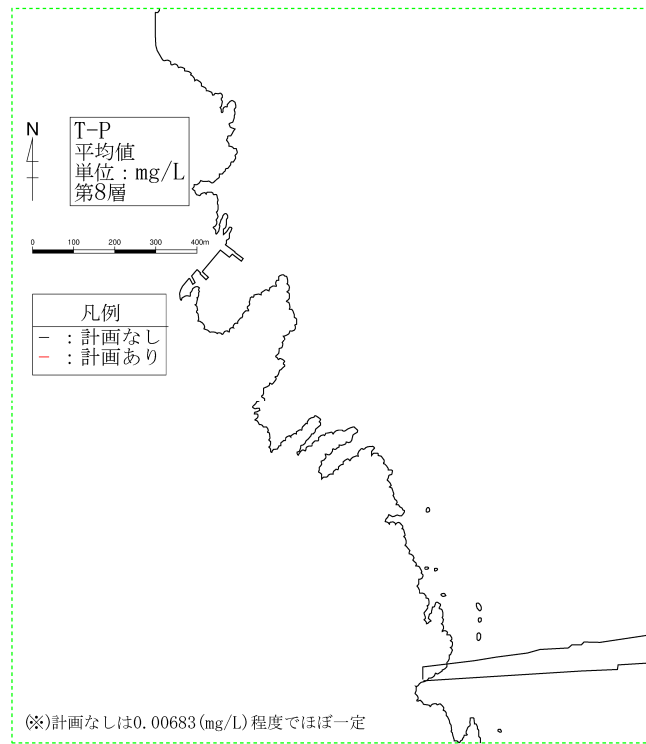
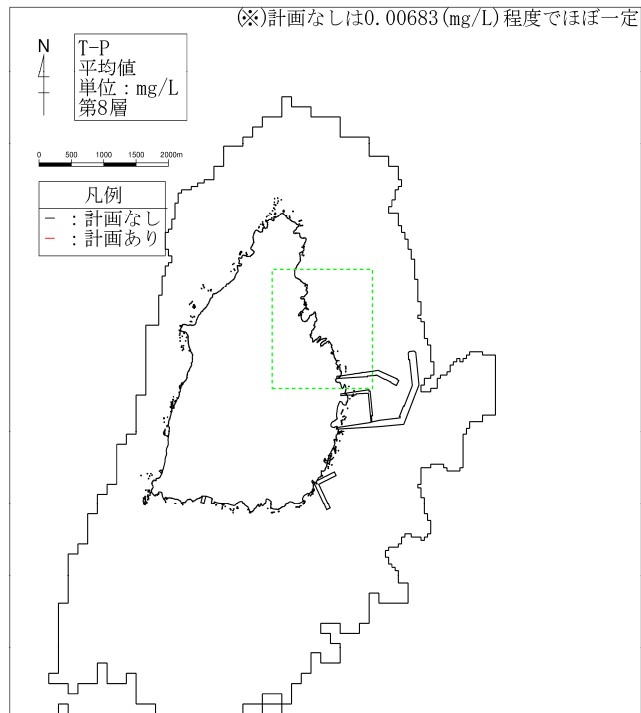


図-6.6.21(8) 供用時の水質濃度分布 (夏季T-P、第8層[30~50m])

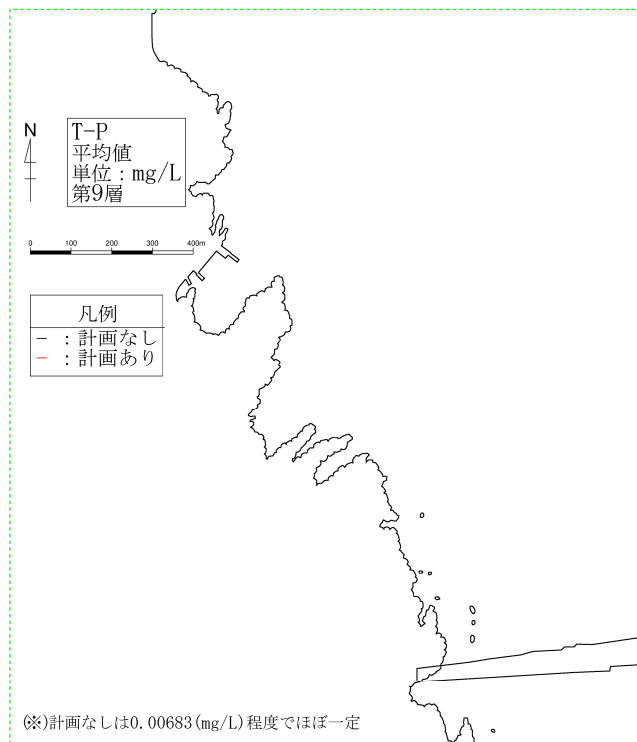
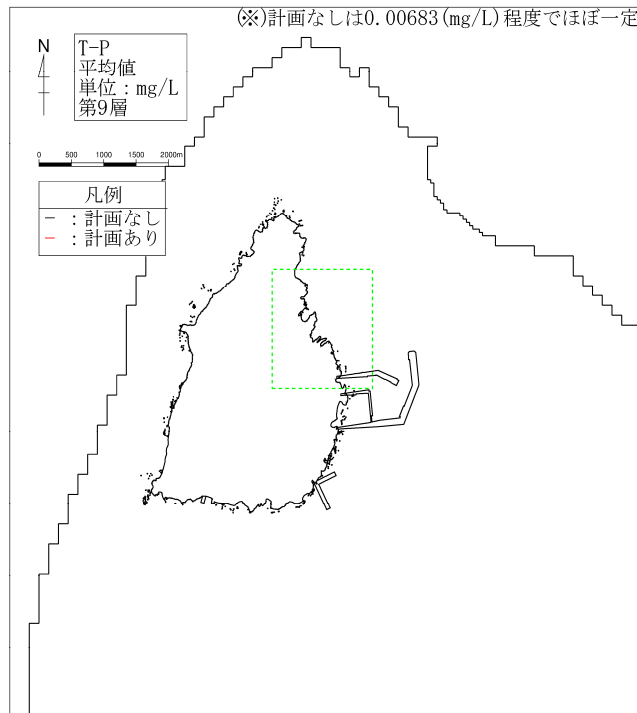


図-6.6.21(9) 供用時の水質濃度分布 (夏季 T-P、第9層[50~100m])

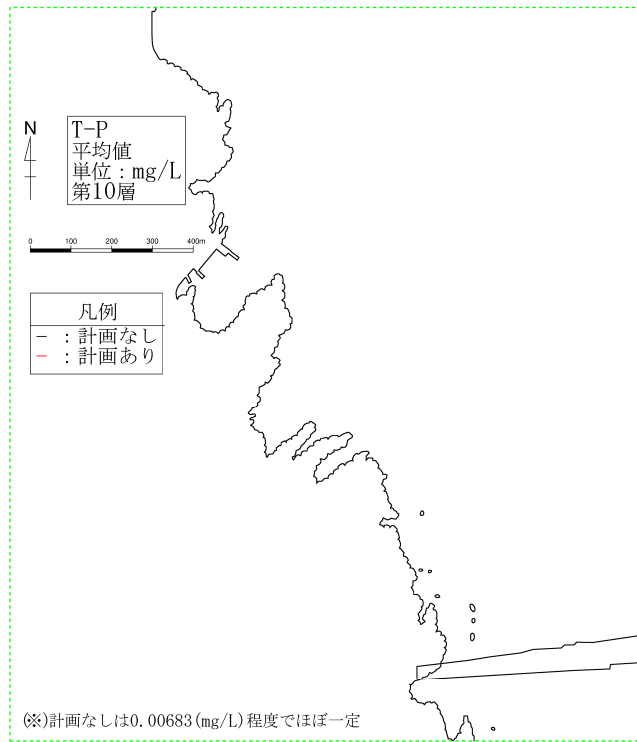
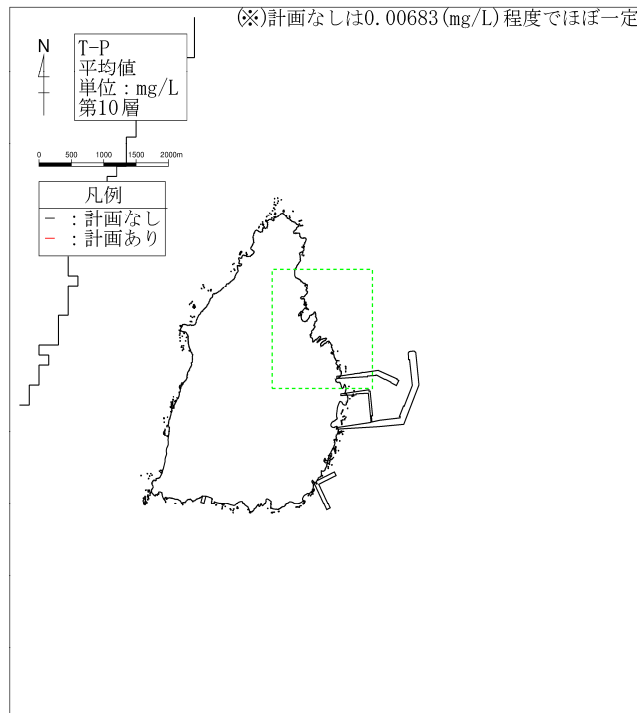


図-6. 6. 21(10) 供用時の水質濃度分布 (夏季 T-P、第 10 層[100m 以深])



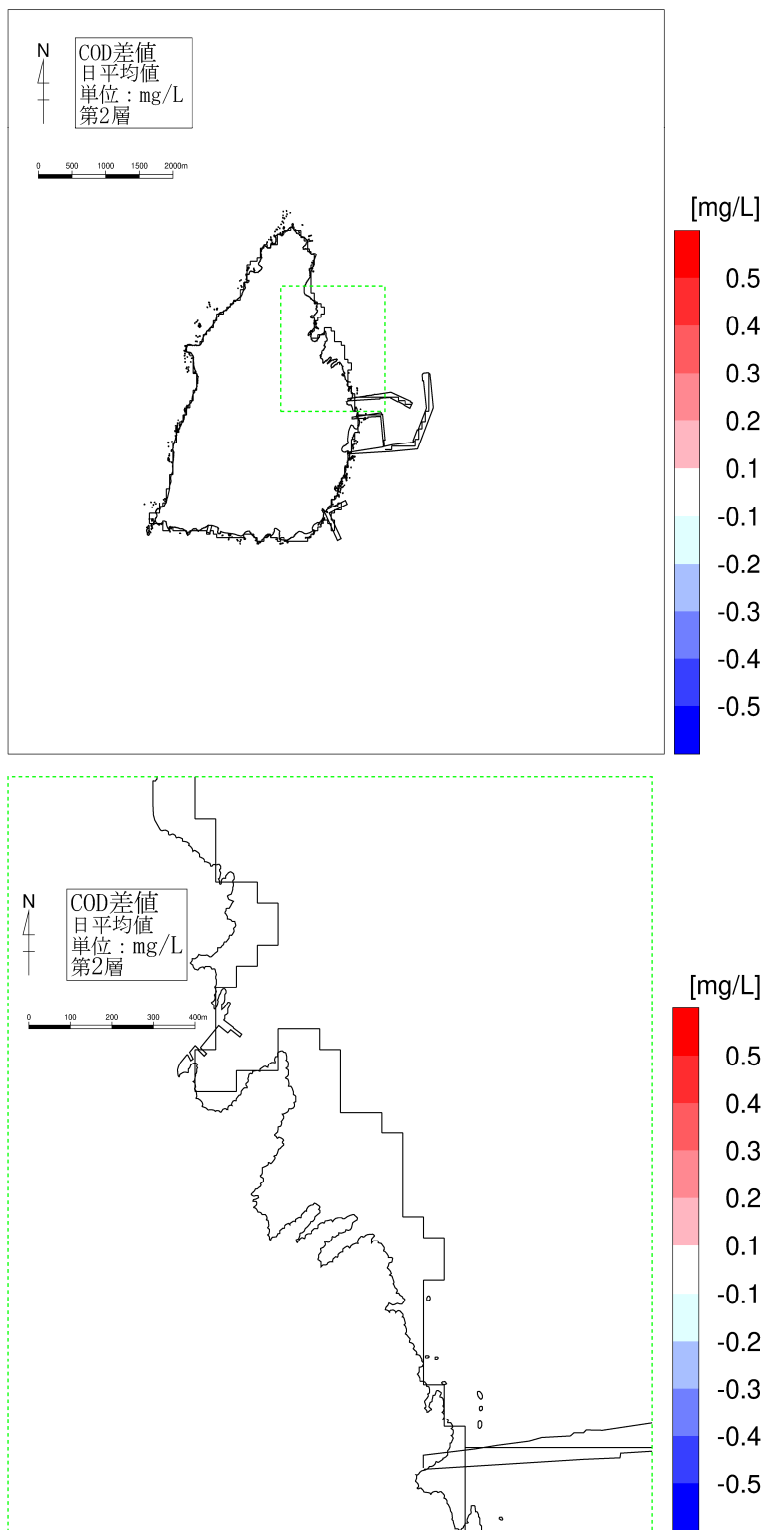


図-6. 6. 22(2) 供用時の水質濃度変化 (夏季、COD、第2層[2~4m])



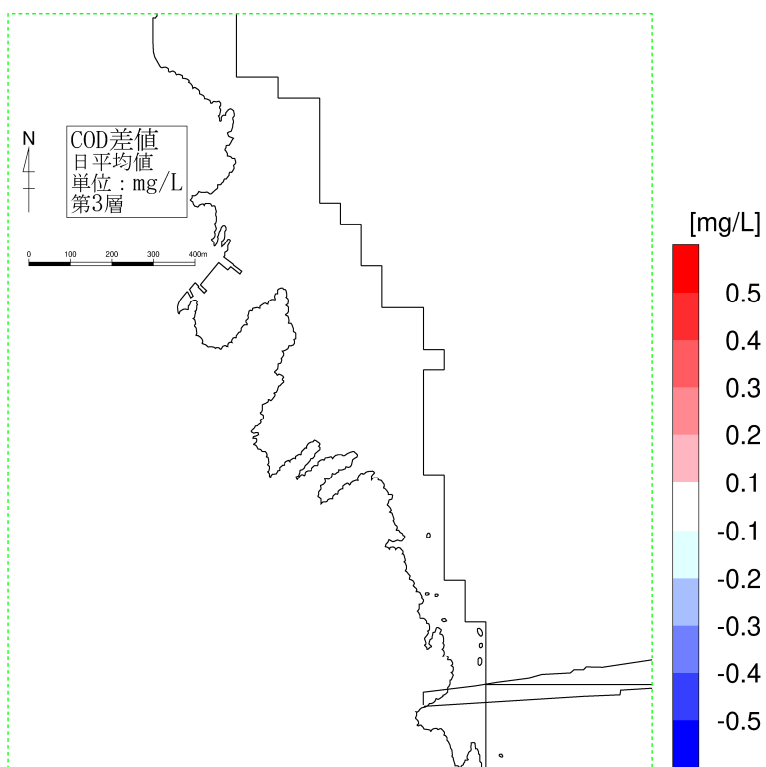
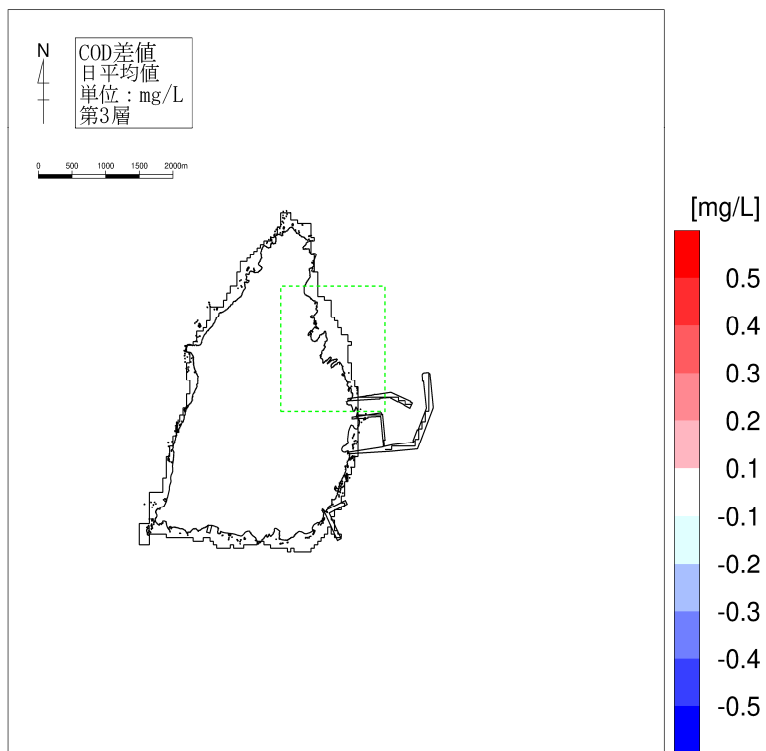


図-6. 6. 22(3) 供用時の水質濃度変化 (夏季、COD、第3層[4~7m])

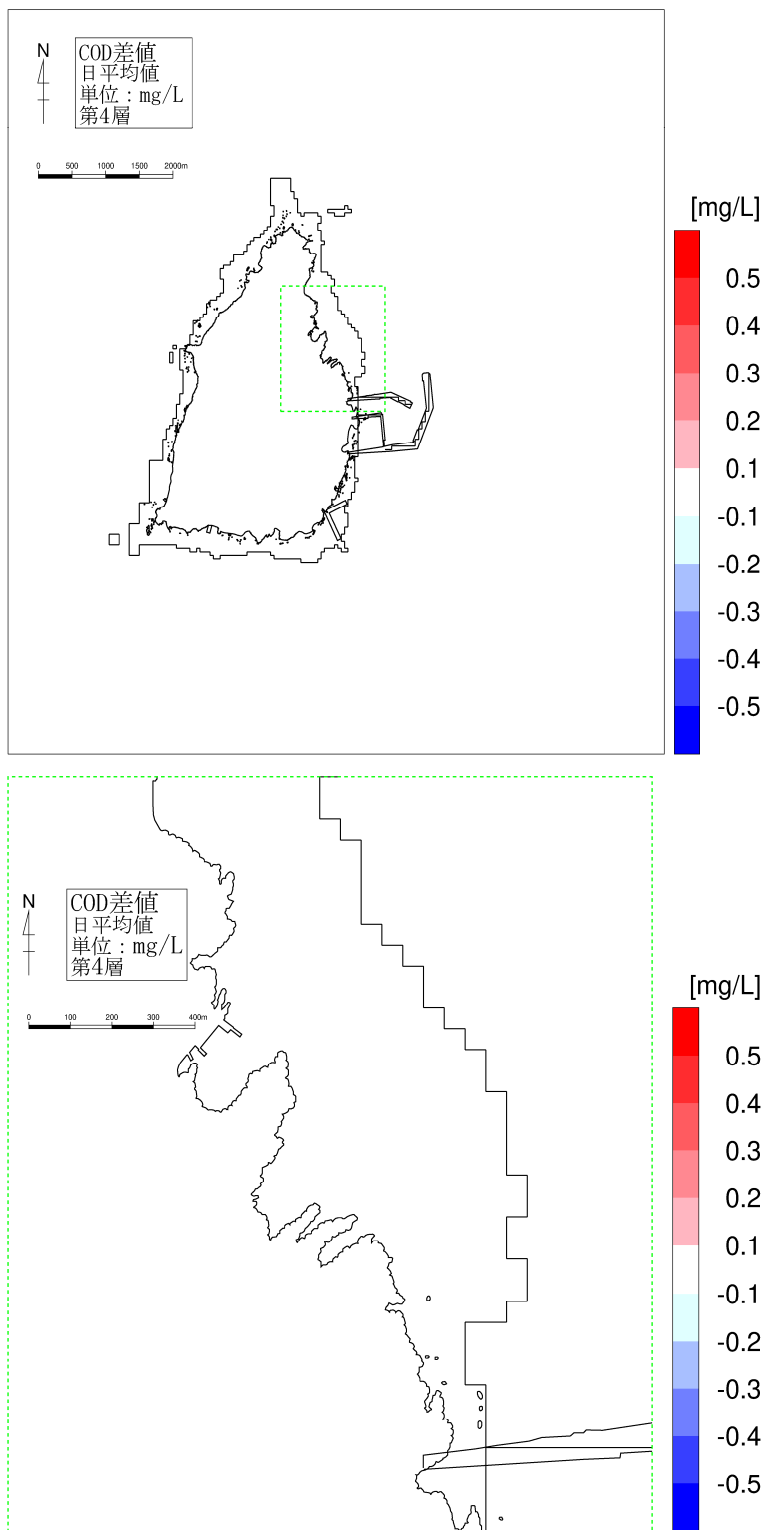


図-6.6.22(4) 供用時の水質濃度変化 (夏季、COD、第4層[7~10m])

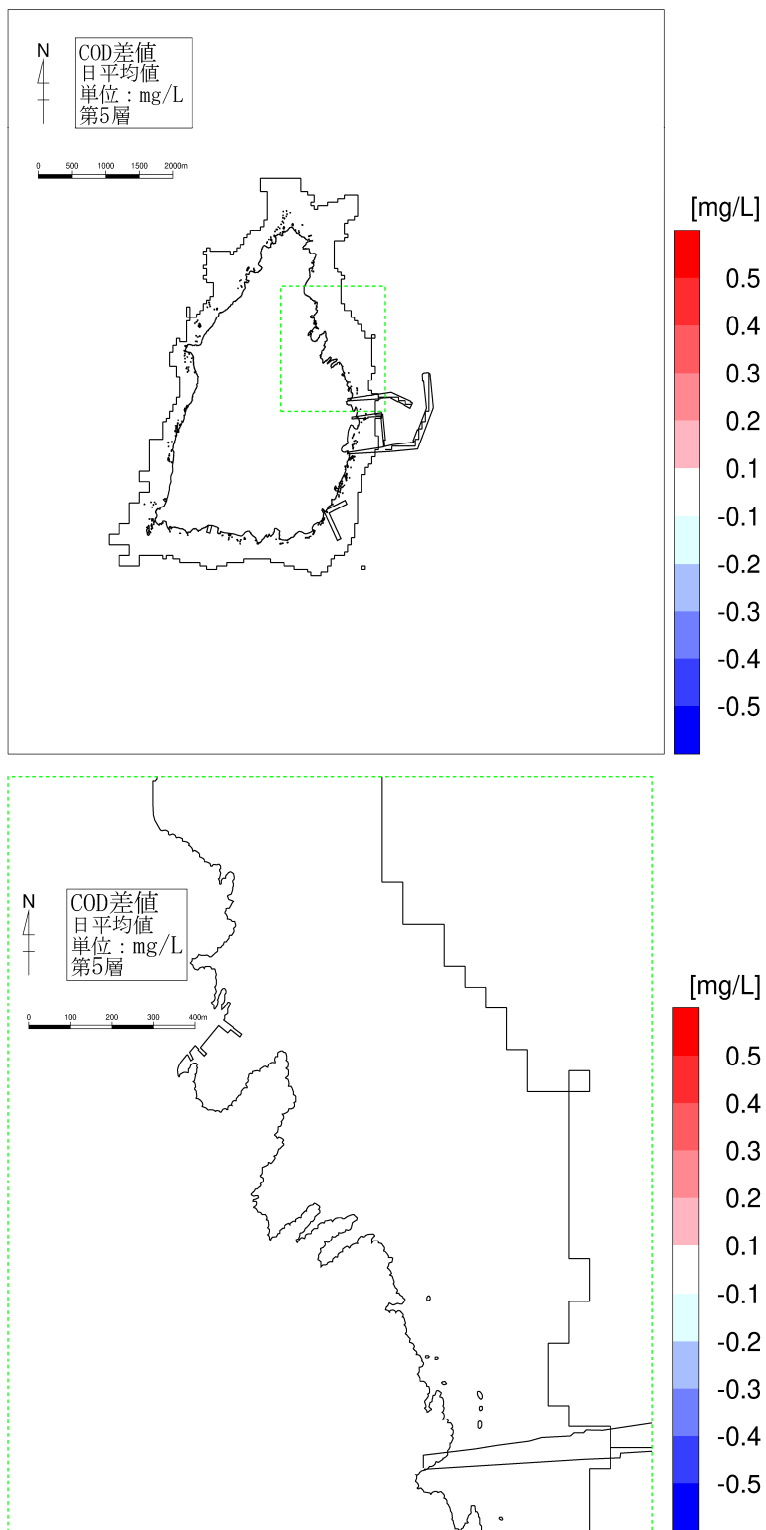


図-6. 6. 22(5) 供用時の水質濃度変化 (夏季、COD、第5層[10~15m])

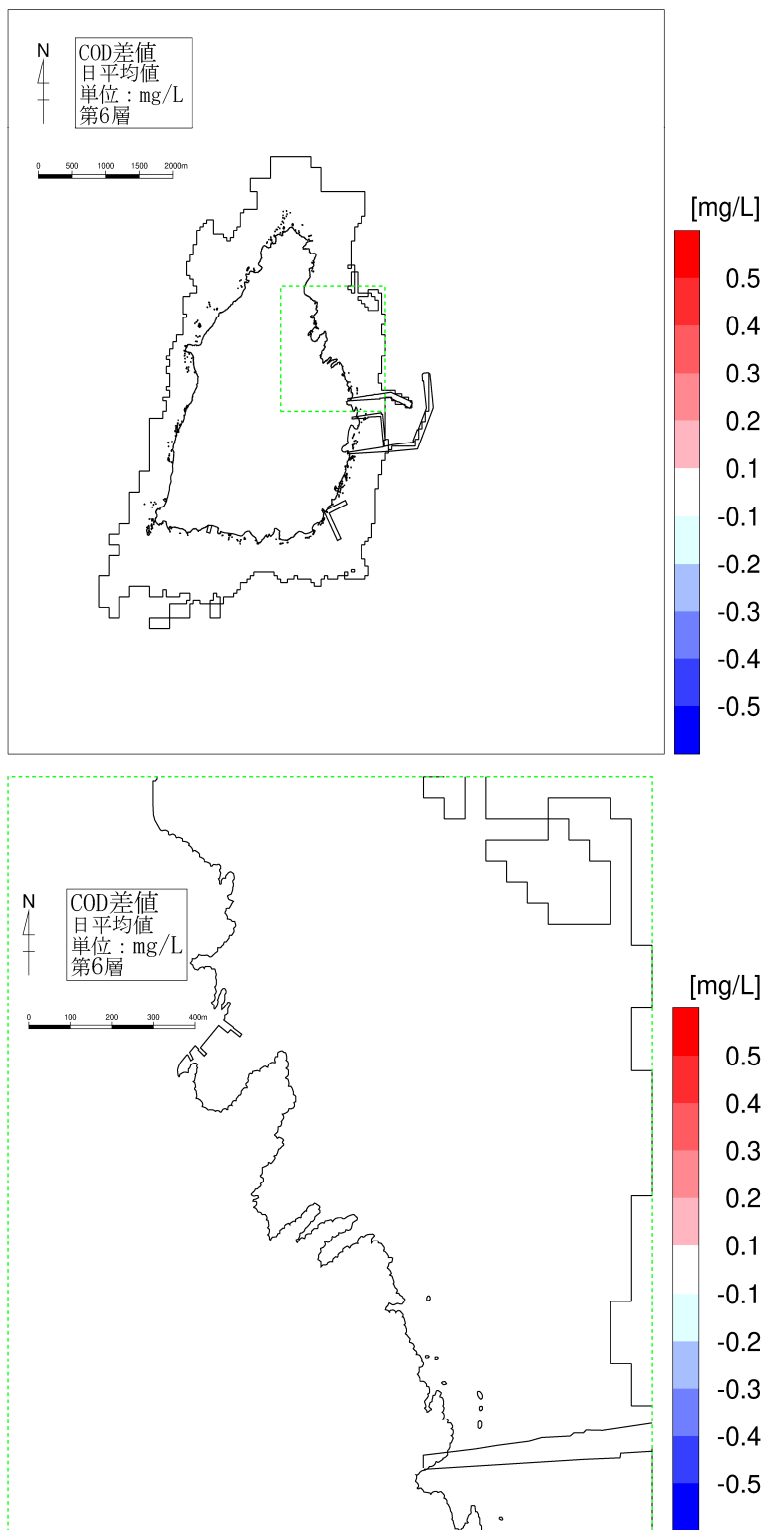


図-6. 6. 22(6) 供用時の水質濃度変化（夏季、COD、第6層[15~20m]）



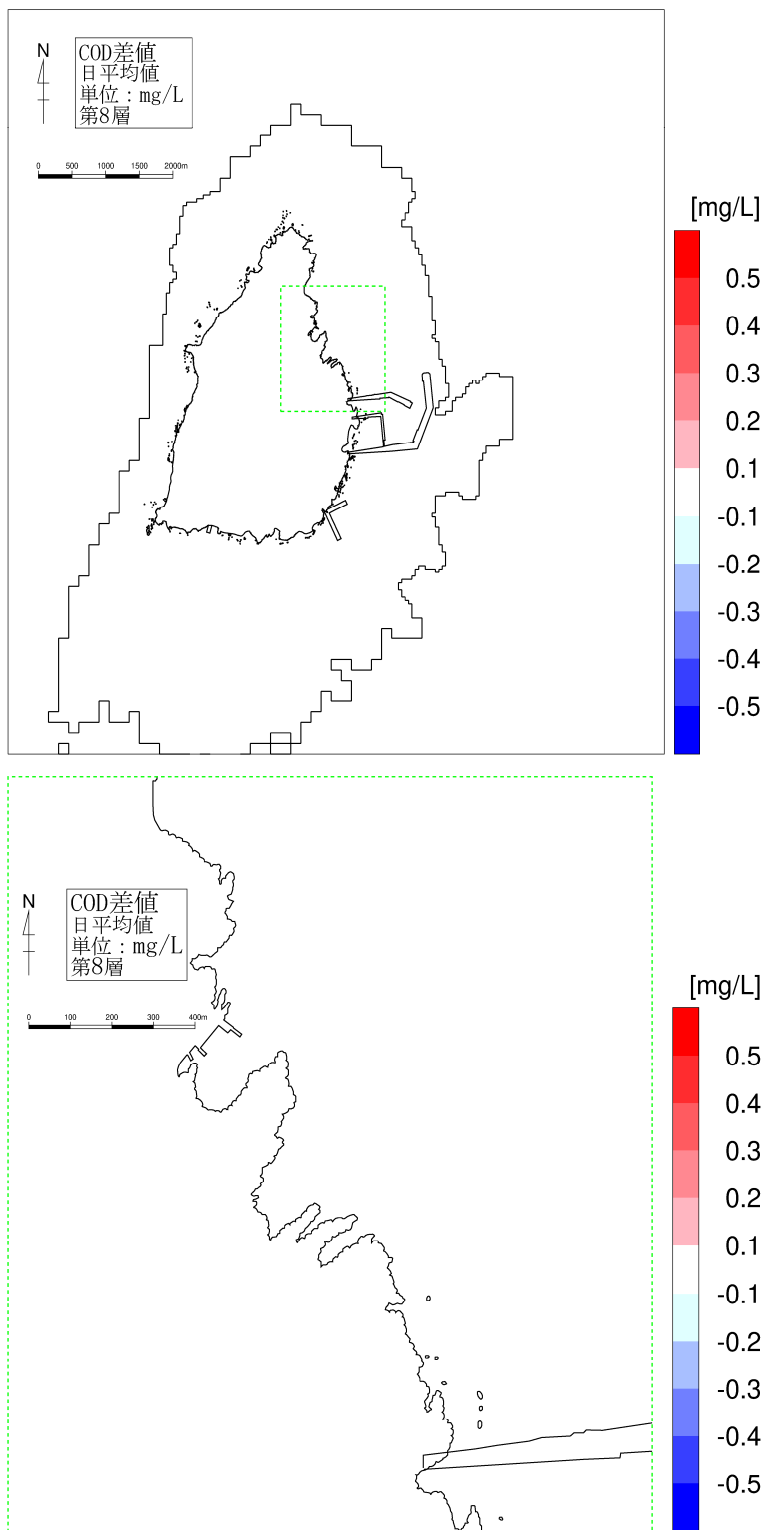


図-6. 6. 22(8) 供用時の水質濃度変化（夏季、COD、第8層[30~50m]）

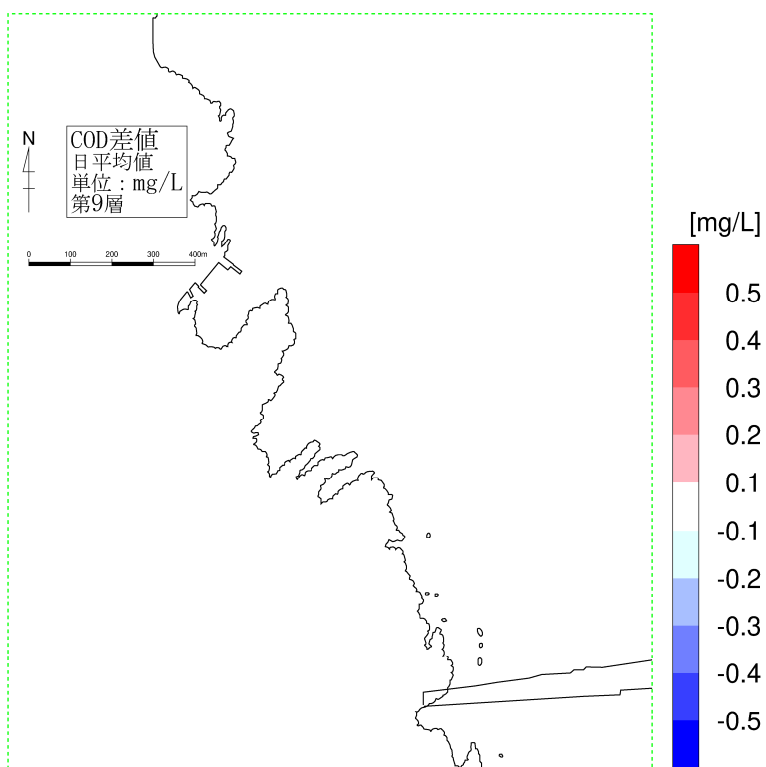
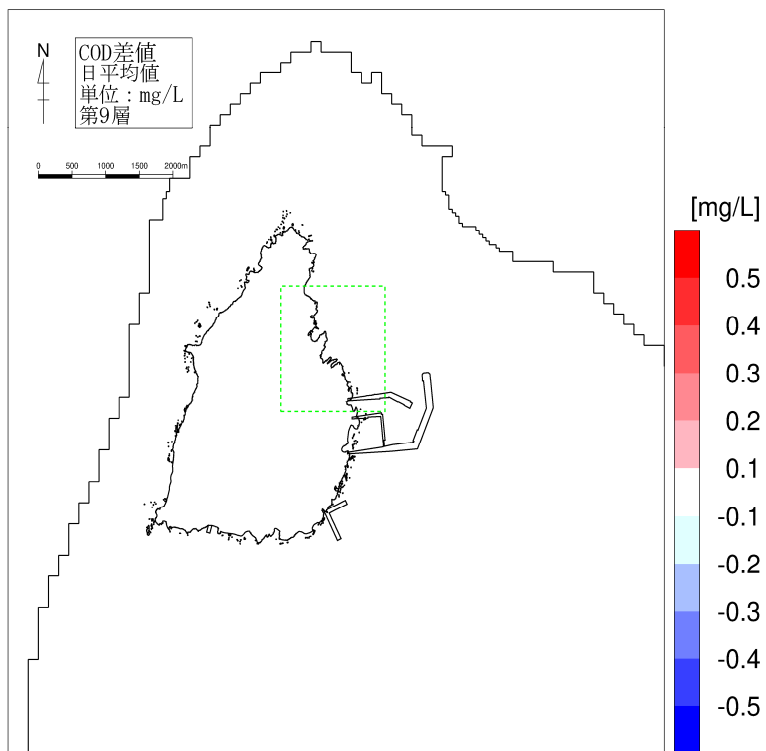


図-6.6.22(9) 供用時の水質濃度変化 (夏季、COD、第9層[50~100m])

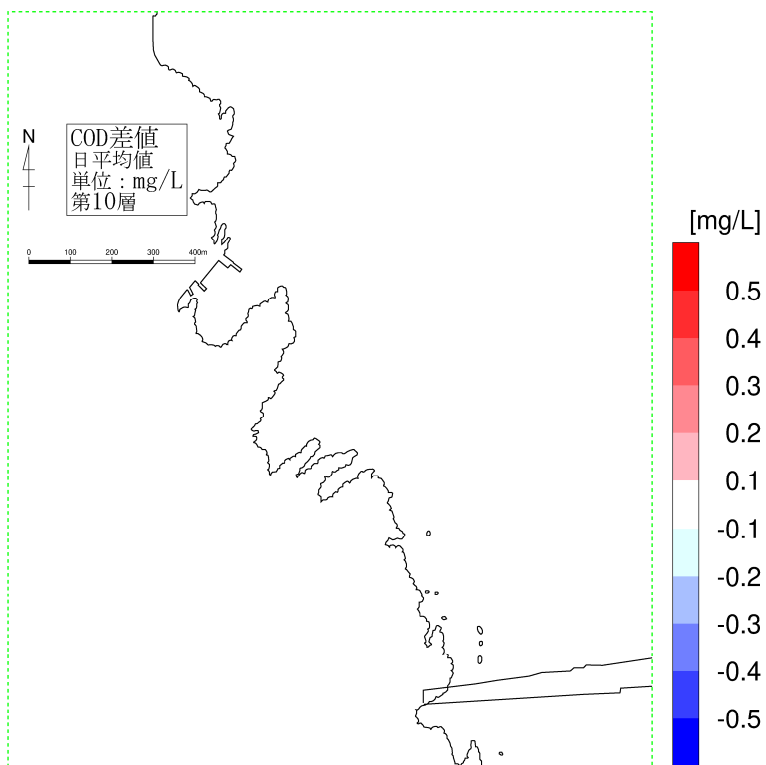
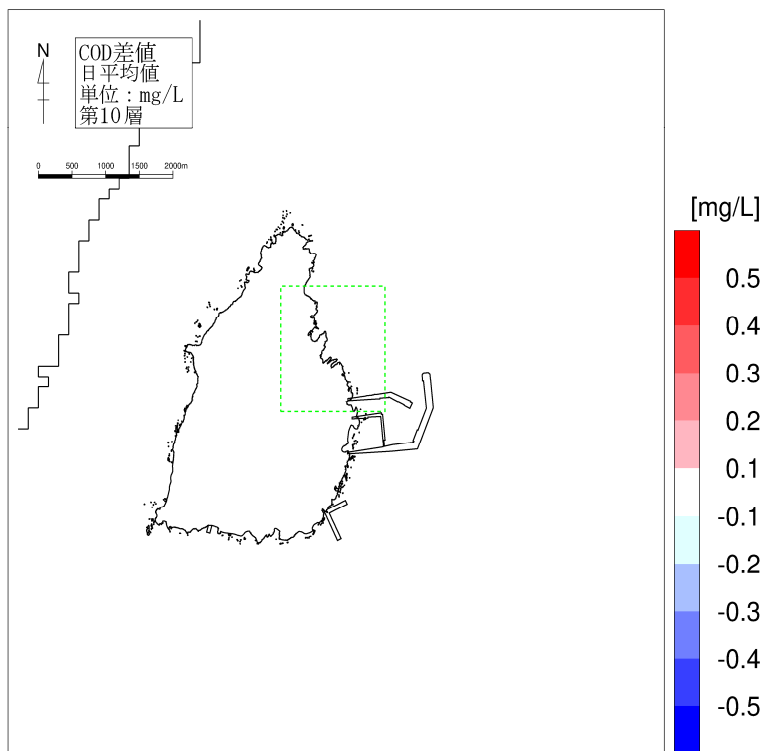


図-6.6.22(10) 供用時の水質濃度変化 (夏季、COD、第10層[100m以深])



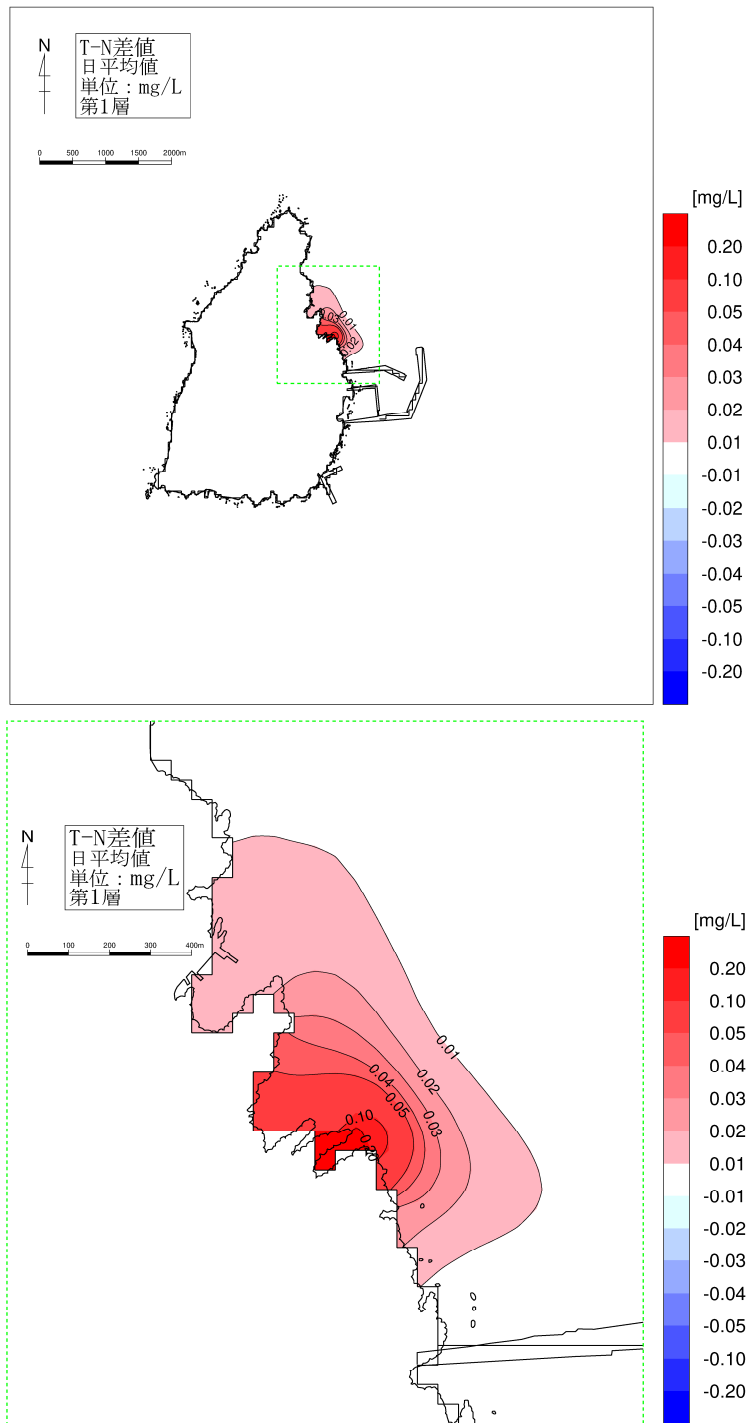


図-6.6.23(1) 供用時の水質濃度変化 (夏季、T-N、第1層[0~2m])

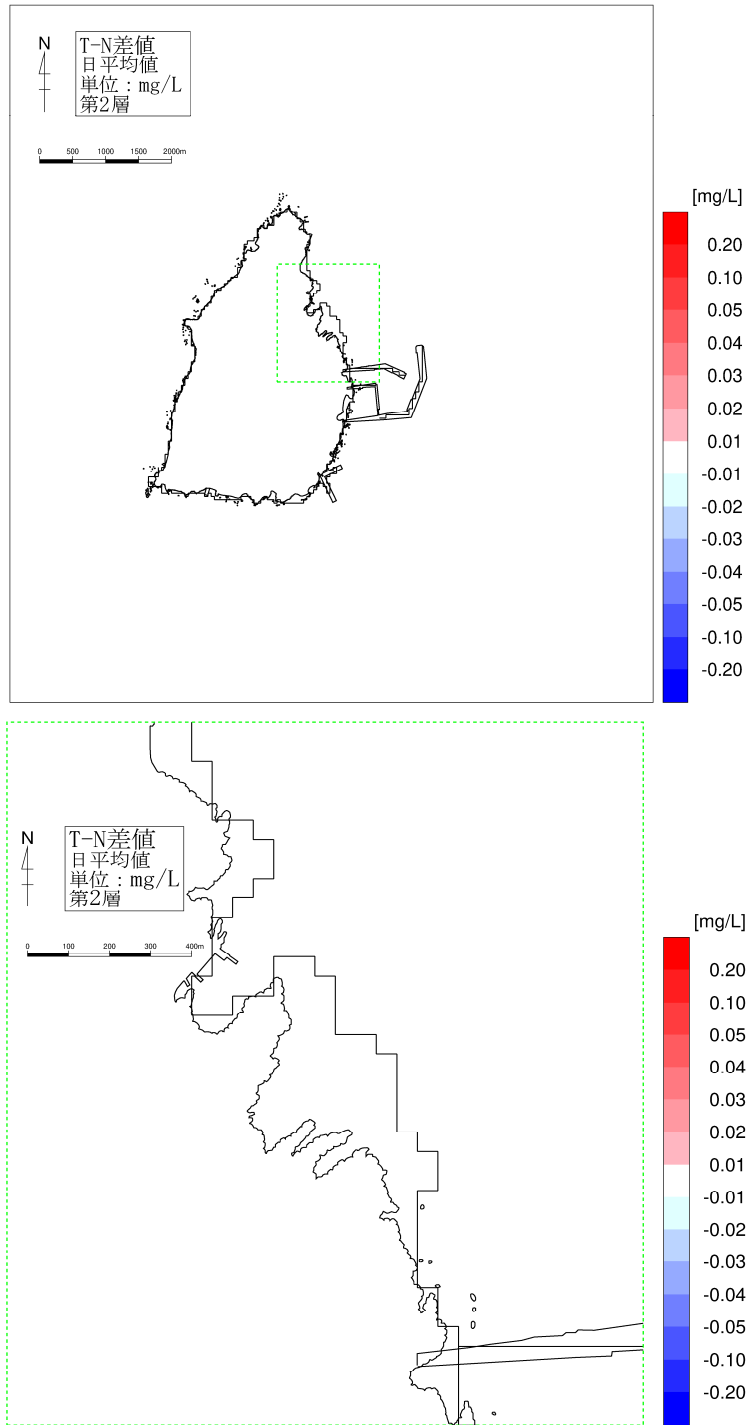


図-6. 6. 23(2) 供用時の水質濃度変化 (夏季、T-N、第2層[2~4m])

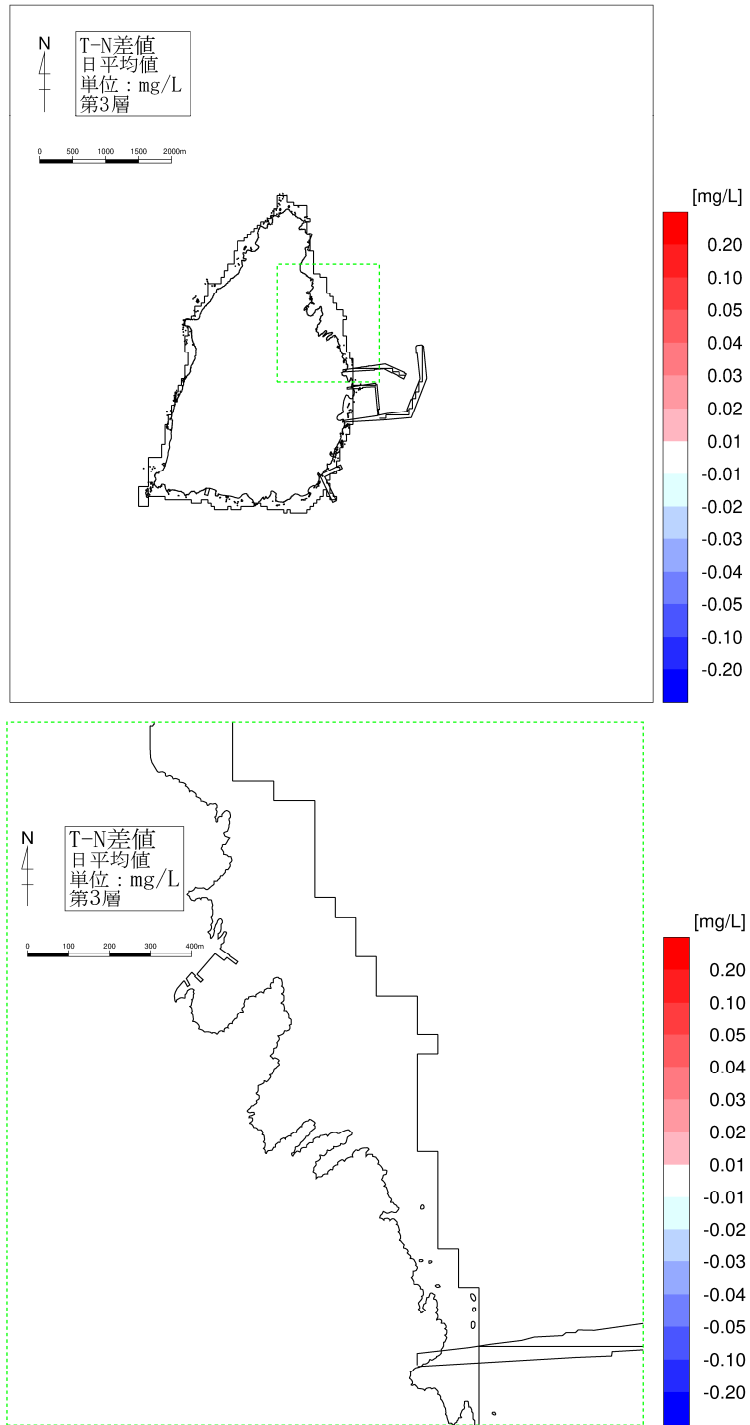


図-6. 6. 23(3) 供用時の水質濃度変化 (夏季、T-N、第3層[4~7m])

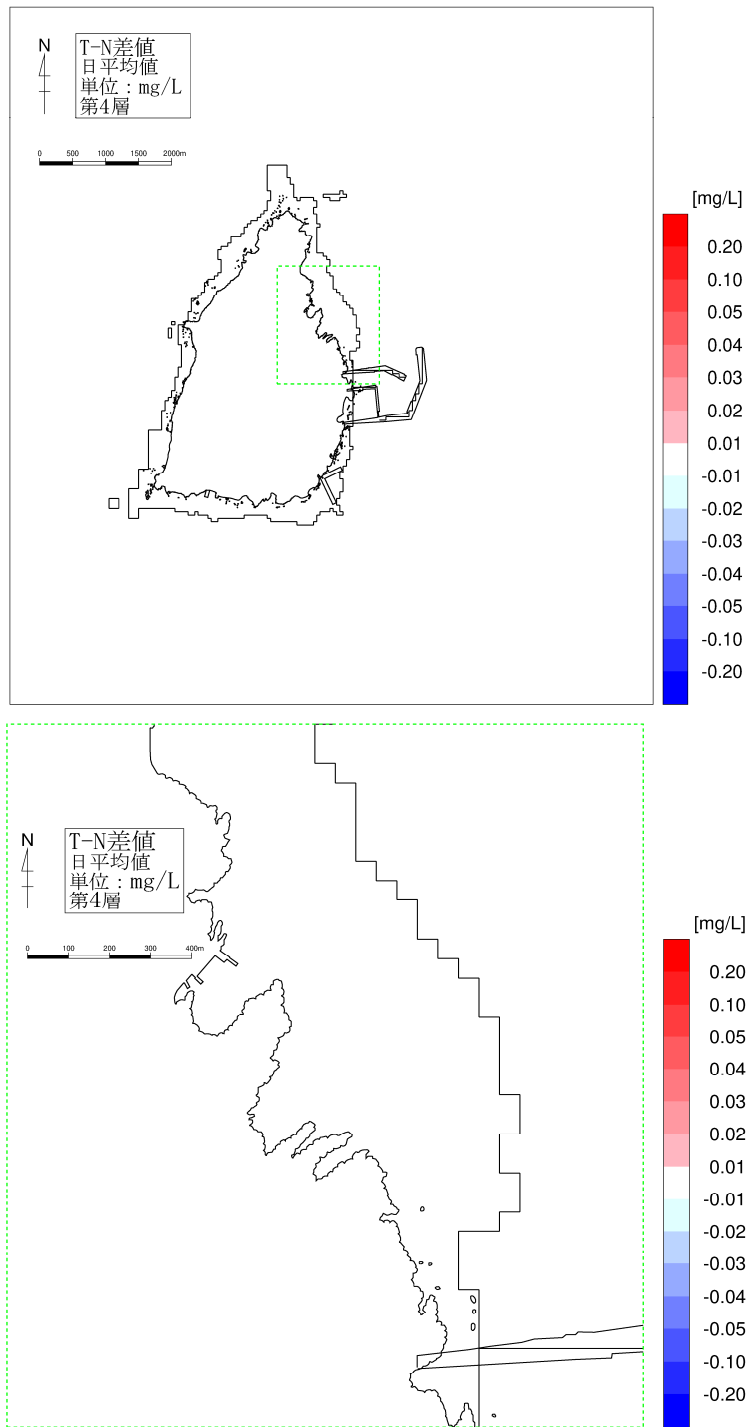


図-6.6.23(4) 供用時の水質濃度変化（夏季、T-N、第4層[7~10m]）

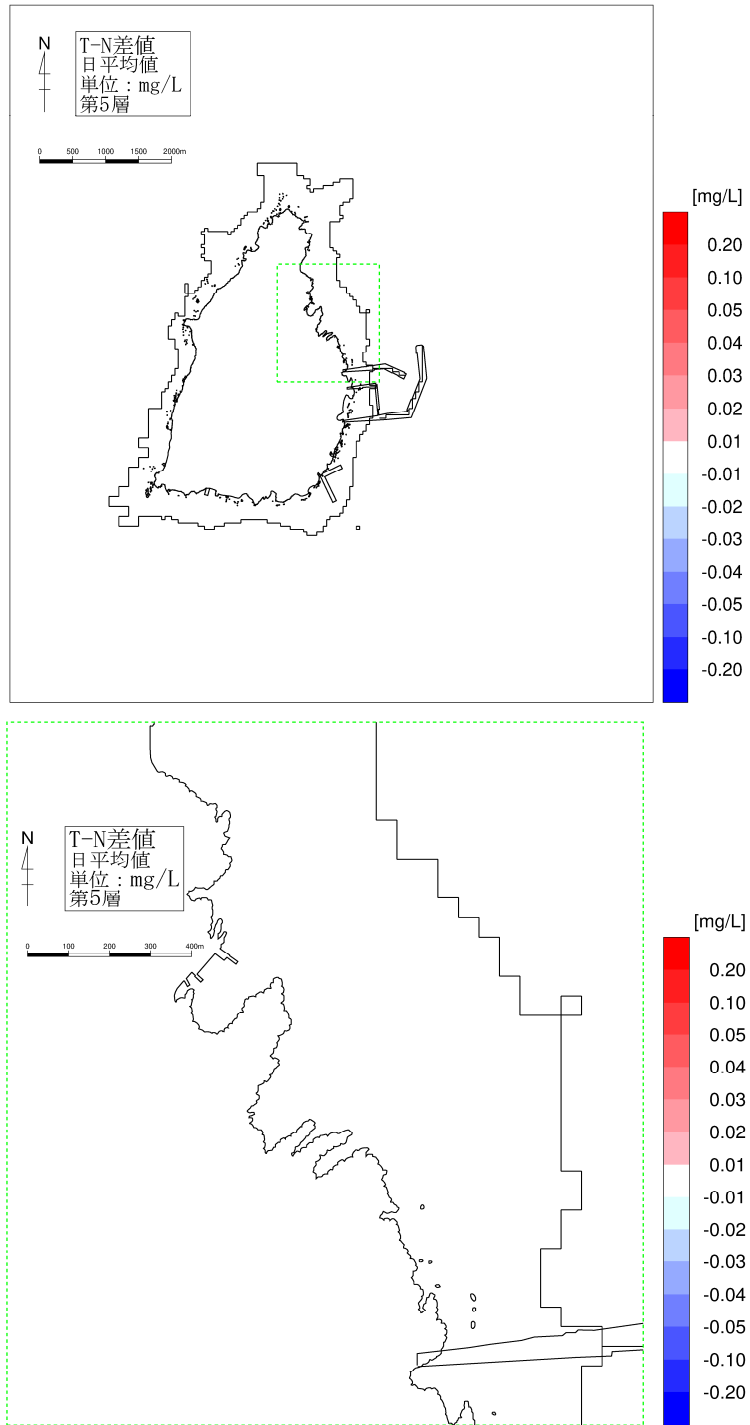


図-6.6.23(5) 供用時の水質濃度変化（夏季、T-N、第5層[10~15m]）

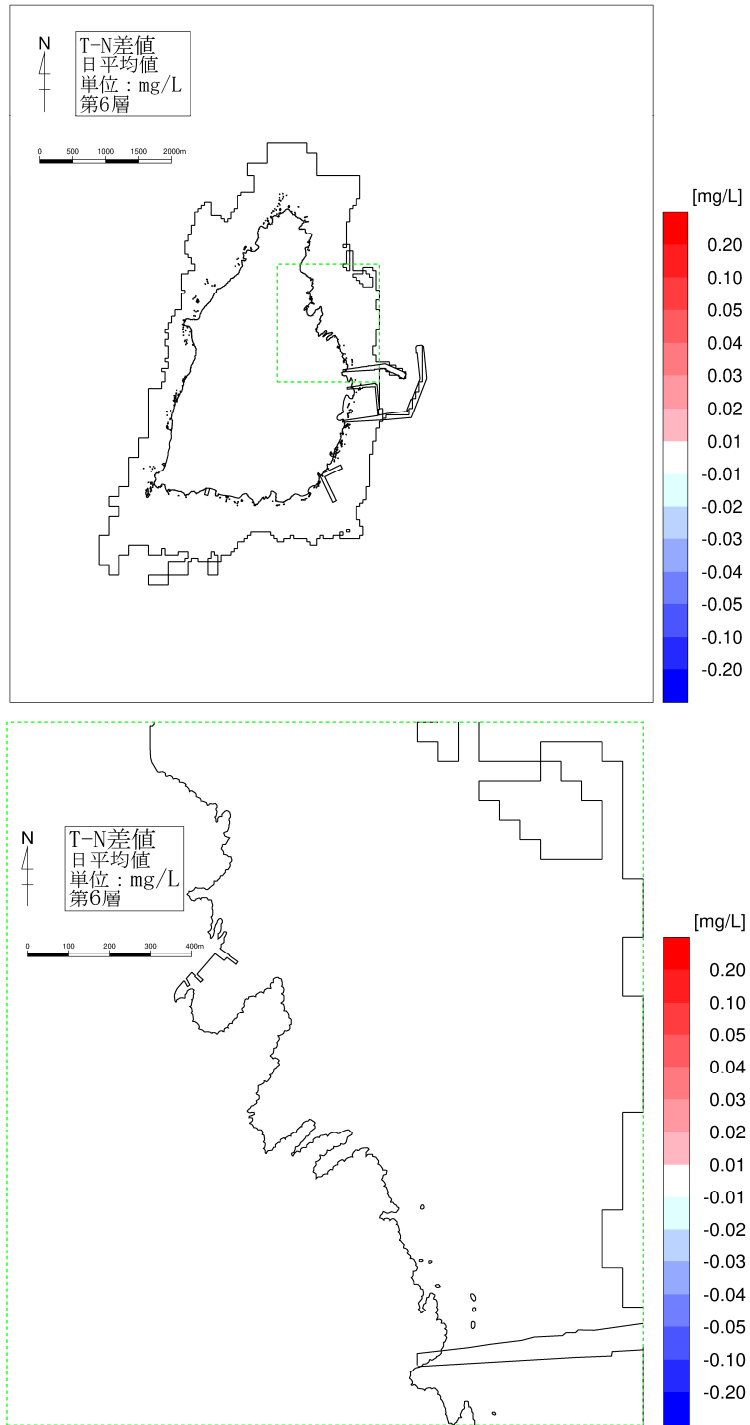


図-6. 6. 23(6) 供用時の水質濃度変化（夏季、T-N、第6層[15~20m]）

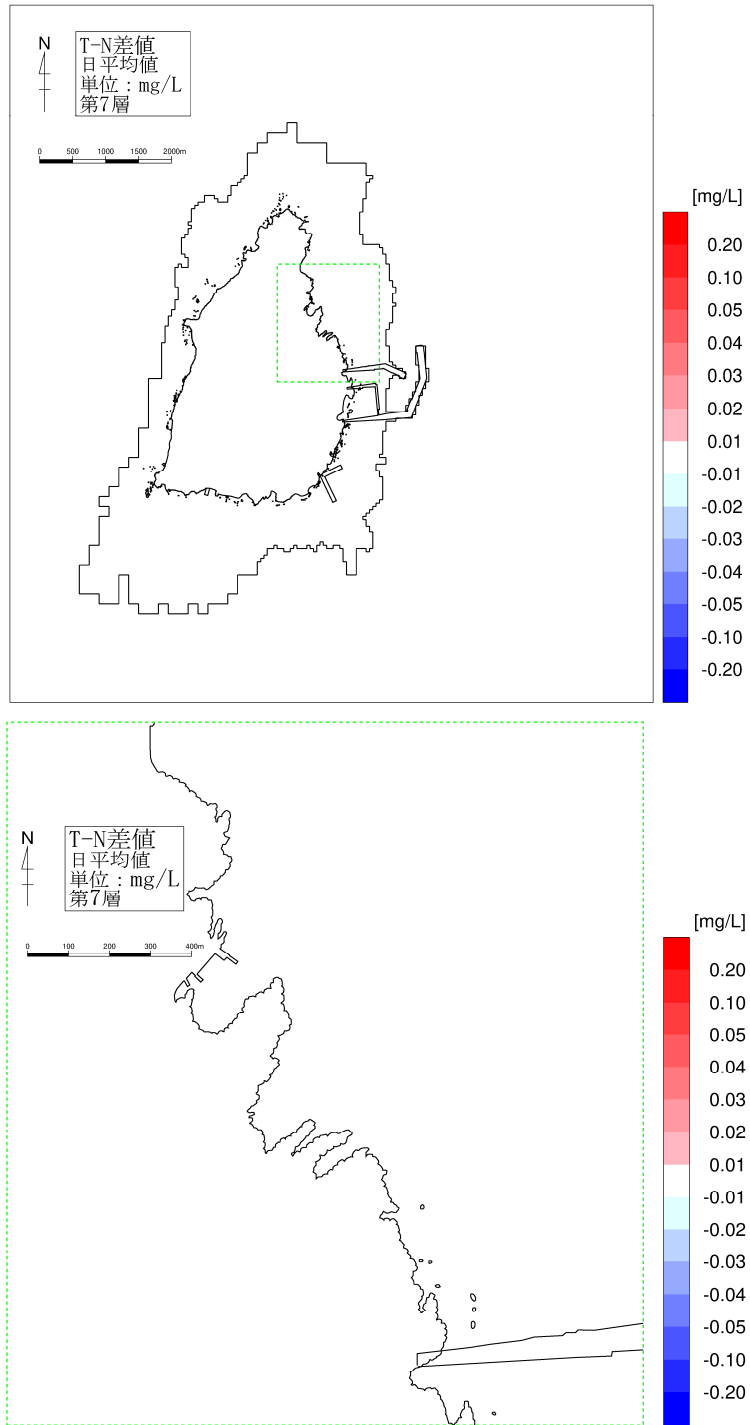


図-6.6.23(7) 供用時の水質濃度変化（夏季、T-N、第7層[20~30m]）

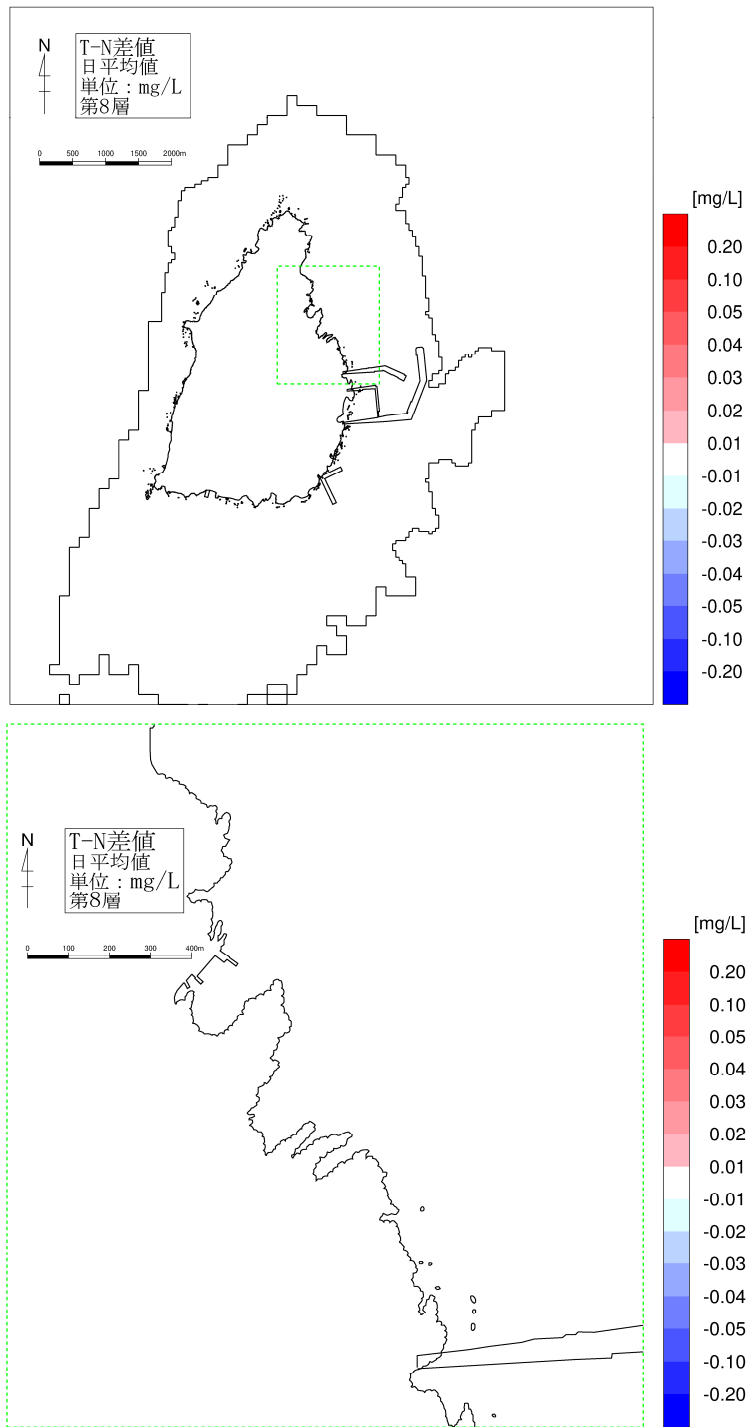


図-6. 6. 23(8) 供用時の水質濃度変化（夏季、T-N、第8層[30~50m]）



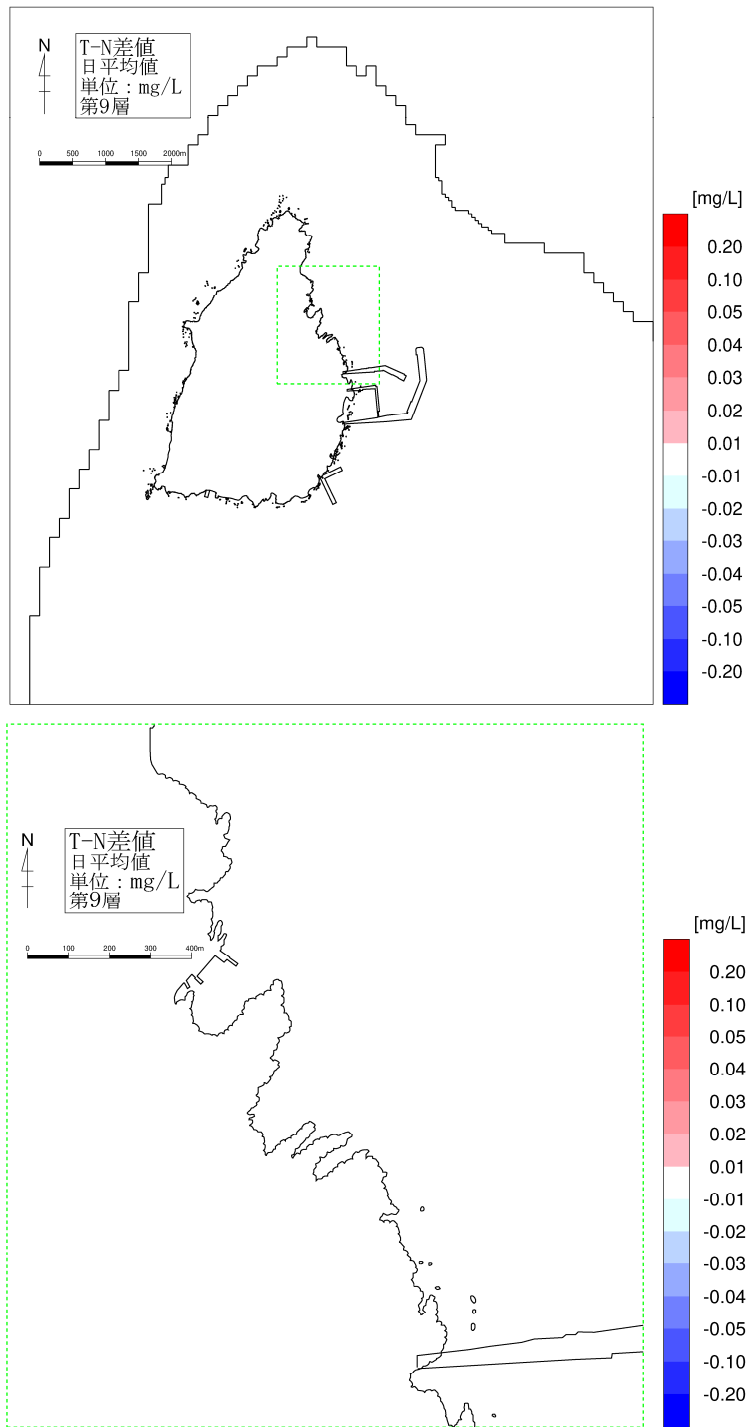


図-6. 6. 23(9) 供用時の水質濃度変化 (夏季、T-N、第9層[50~100m])

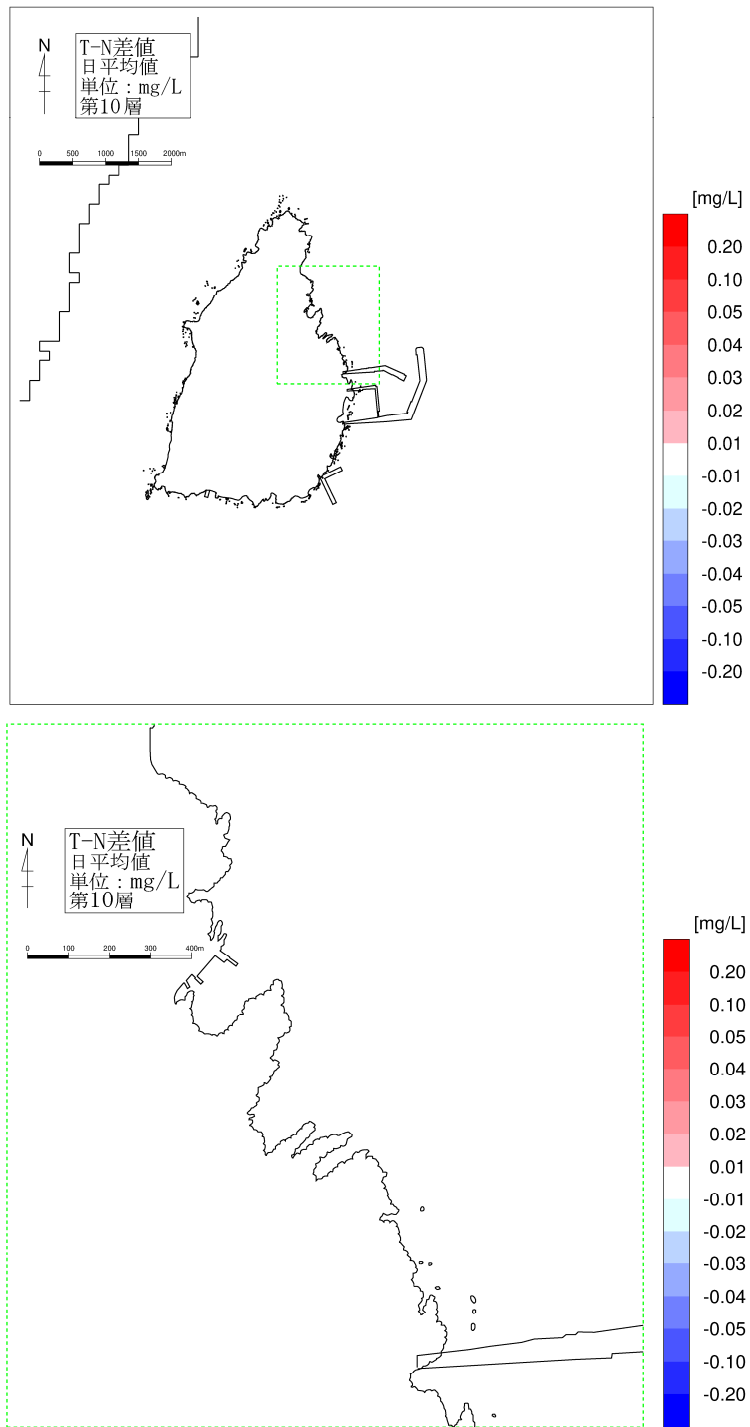


図-6.6.23(10) 供用時の水質濃度変化（夏季、T-N、第10層[100m以深]）

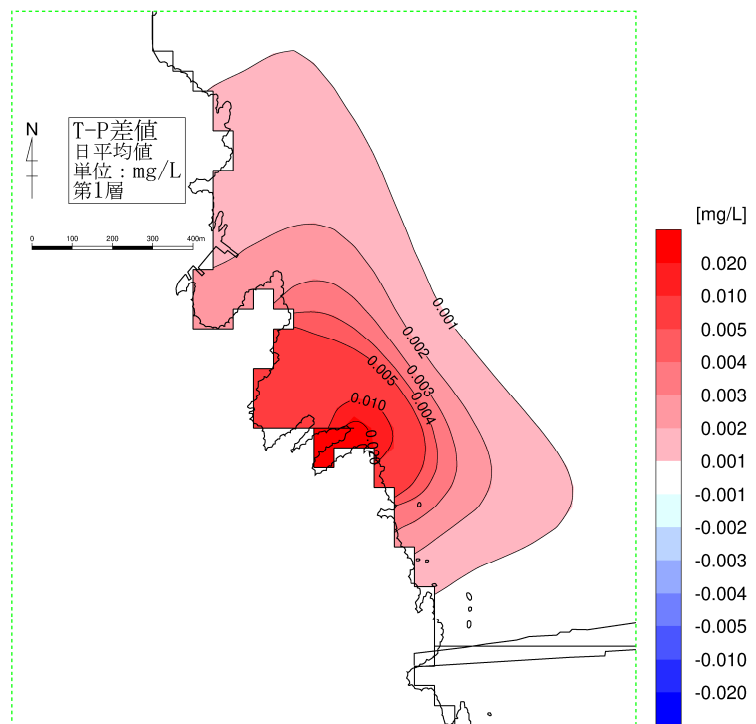
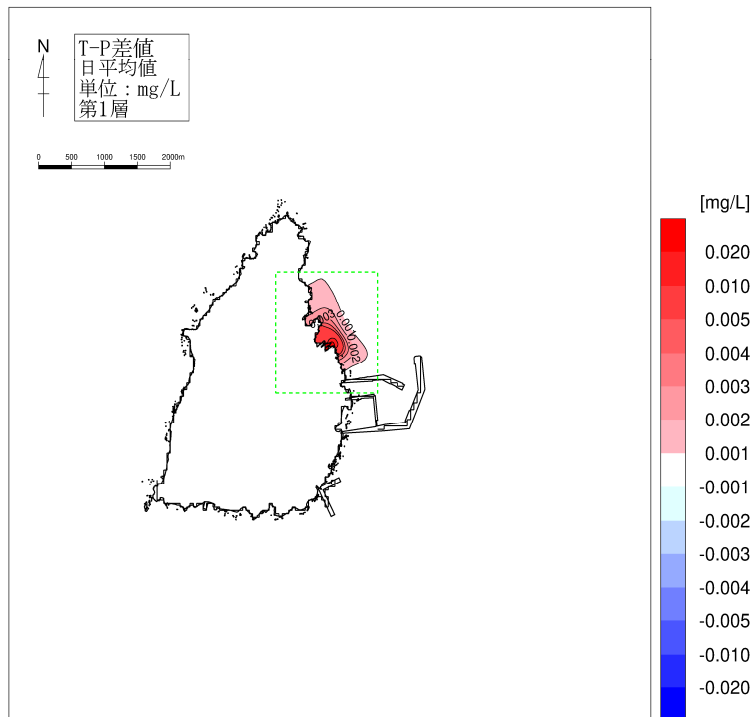


図-6.6.24(1) 供用時の水質濃度変化（夏季、T-P、第1層[0~2m]）

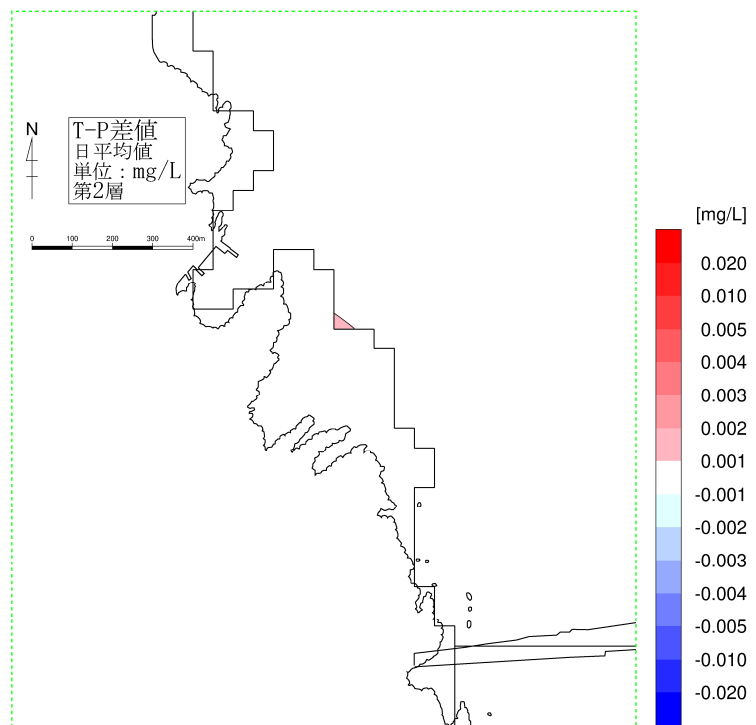
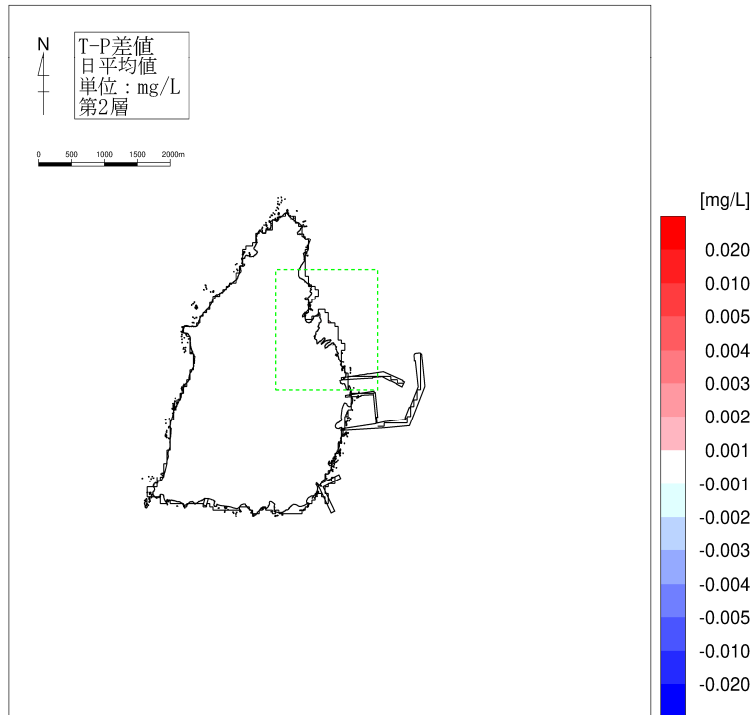


図-6. 6. 24(2) 供用時の水質濃度変化 (夏季、T-P、第2層[2~4m])

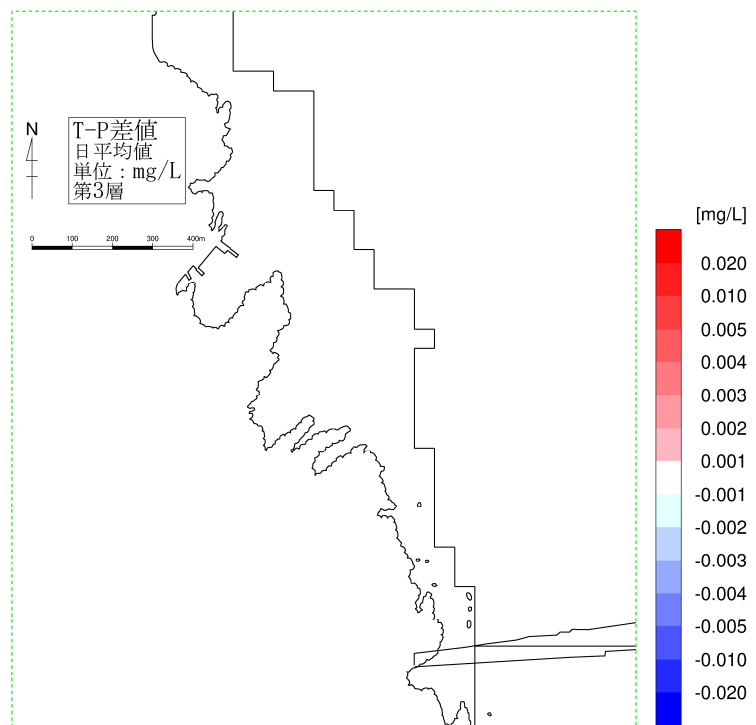
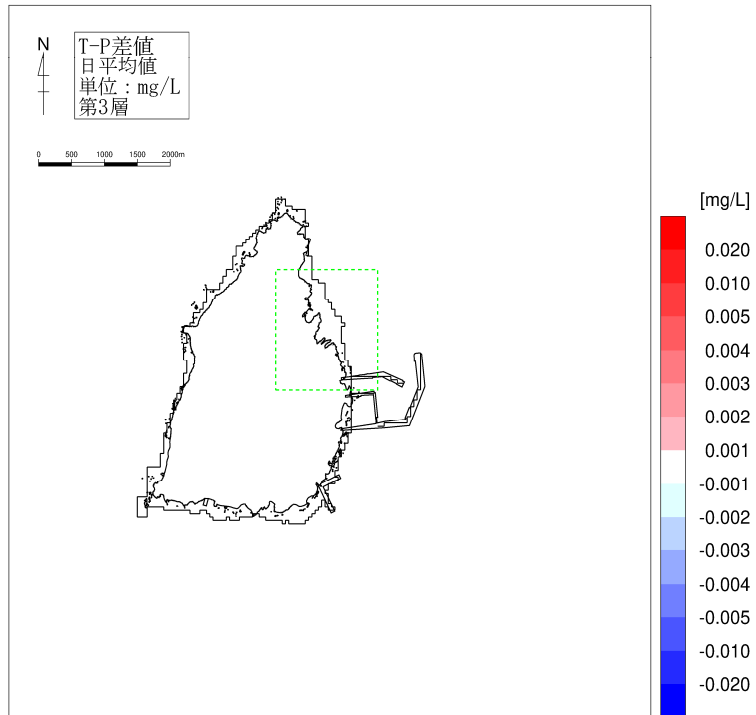


図-6.6.24(3) 供用時の水質濃度変化（夏季、T-P、第3層[4~7m]）

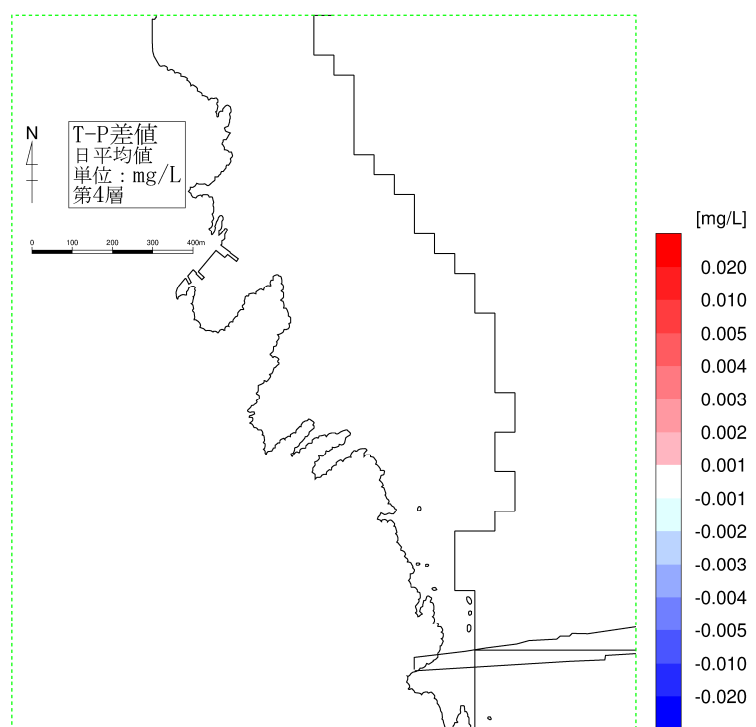
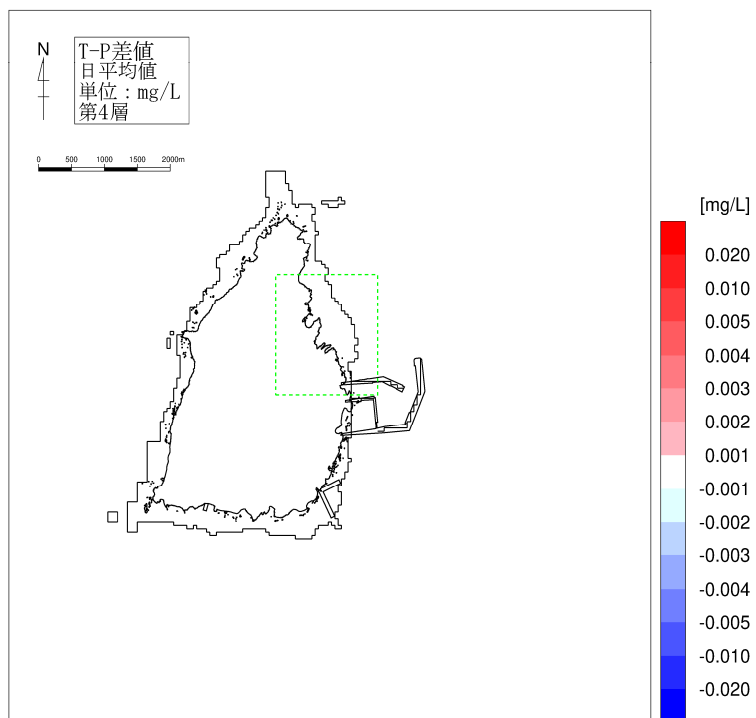


図-6.6.24(4) 供用時の水質濃度変化（夏季、T-P、第4層[7~10m]）

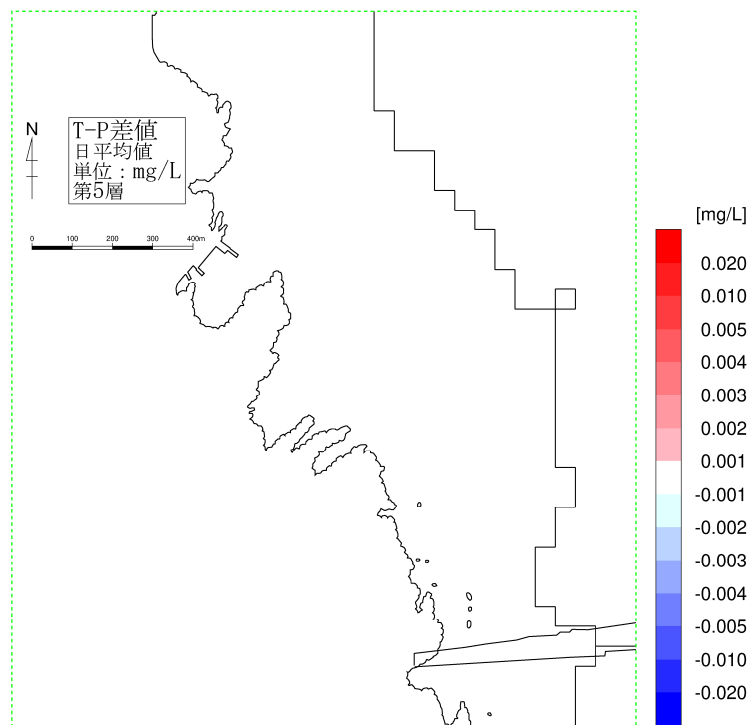
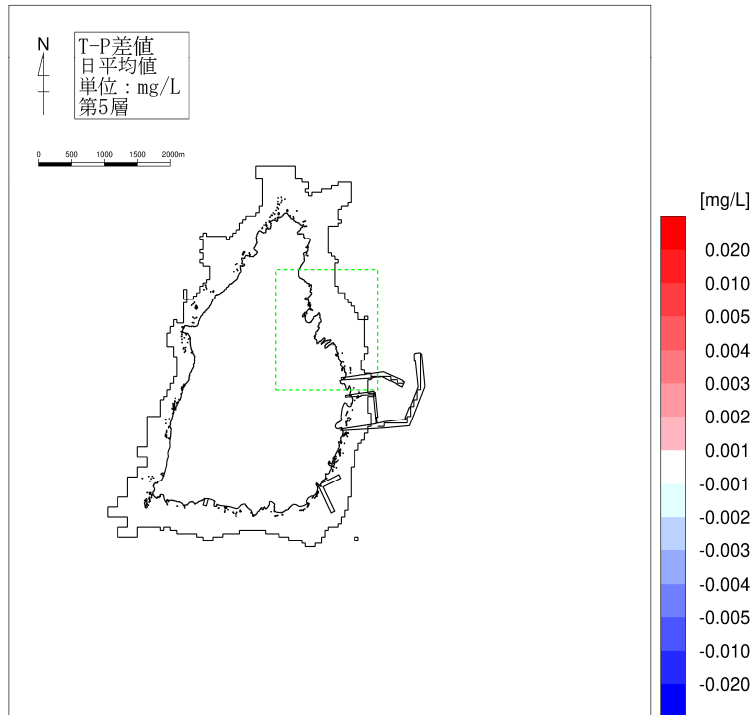


図-6. 6. 24(5) 供用時の水質濃度変化 (夏季、T-P、第5層[10~15m])

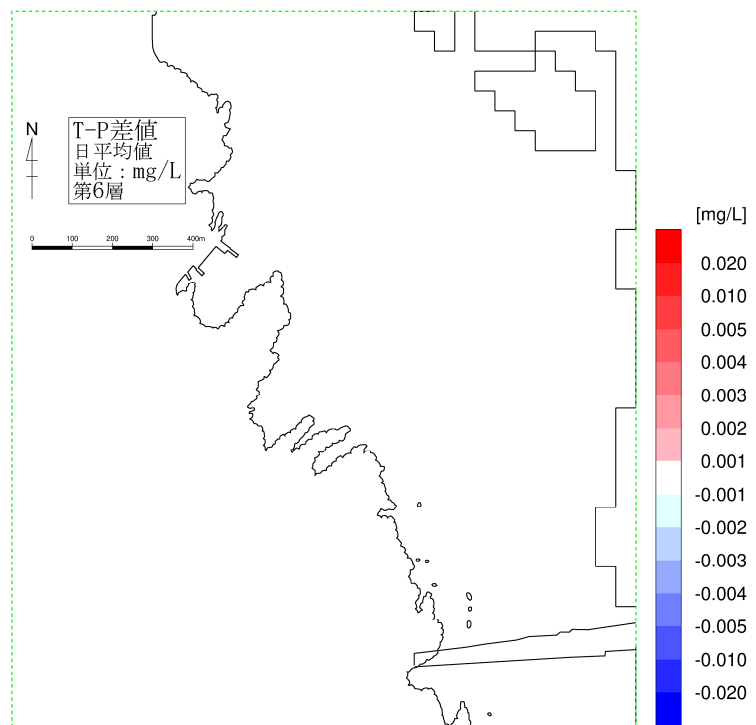
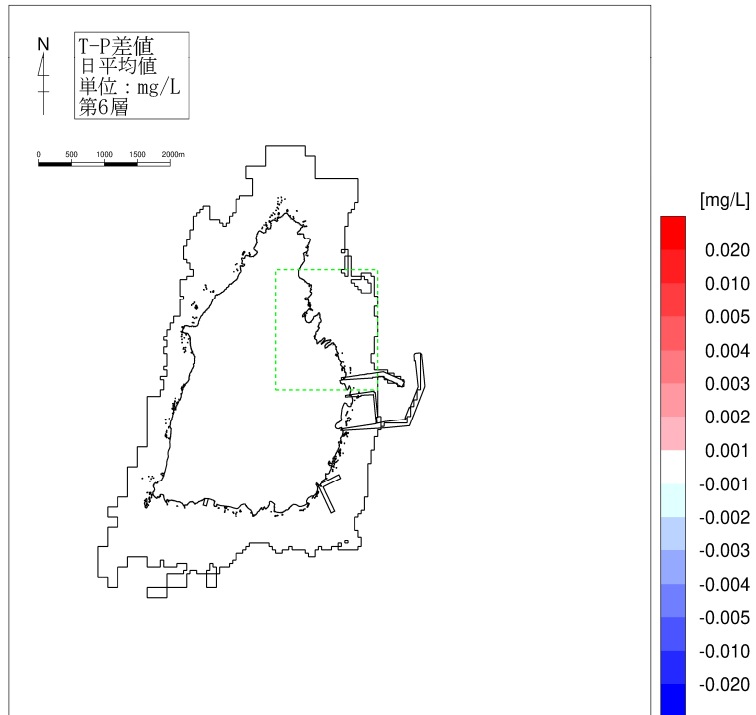


図-6. 6. 24(6) 供用時の水質濃度変化（夏季、T-P、第6層[15~20m]）



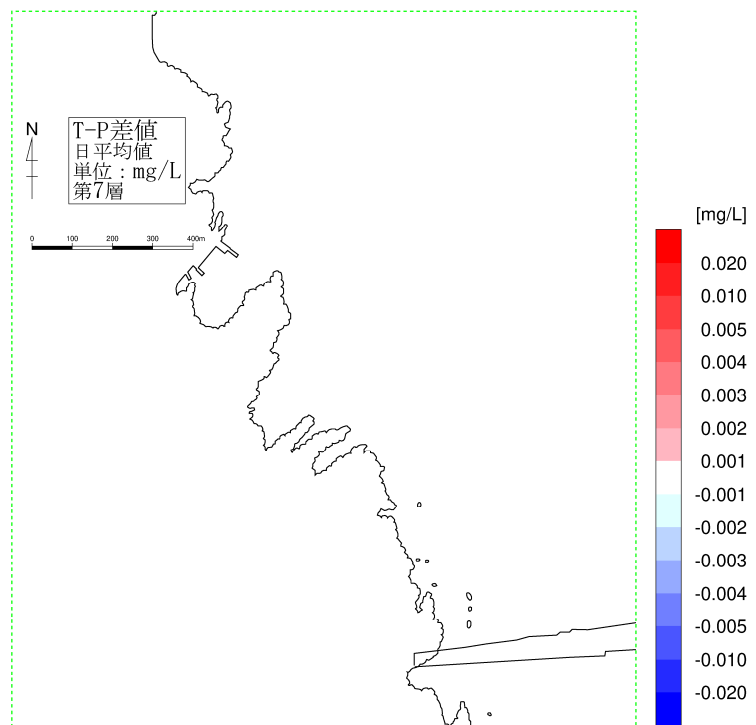
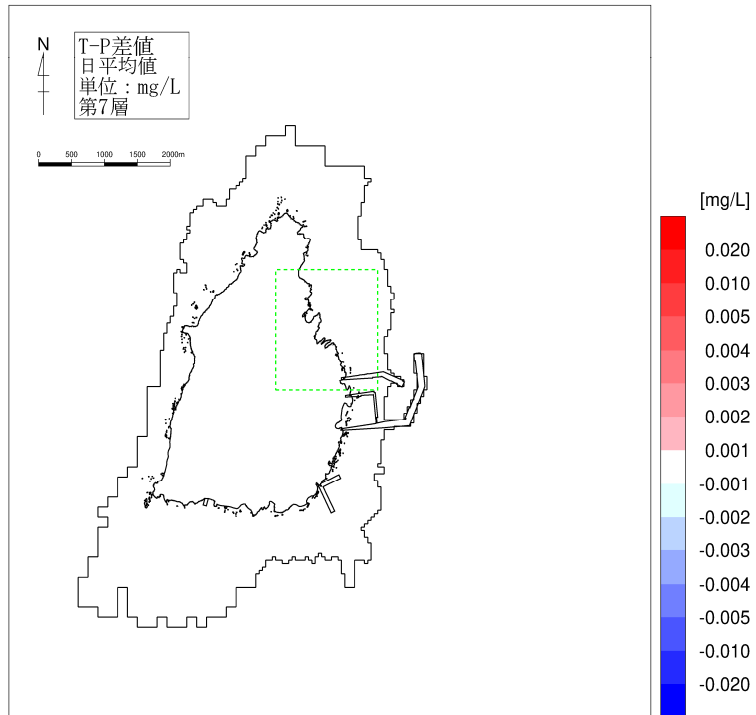


図-6. 6. 24(7) 供用時の水質濃度変化（夏季、T-P、第7層[20~30m]）

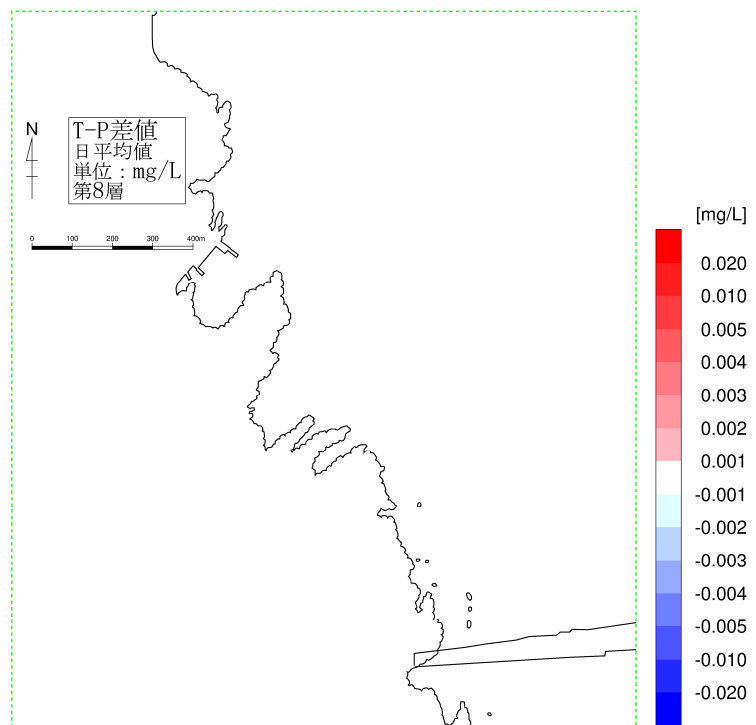
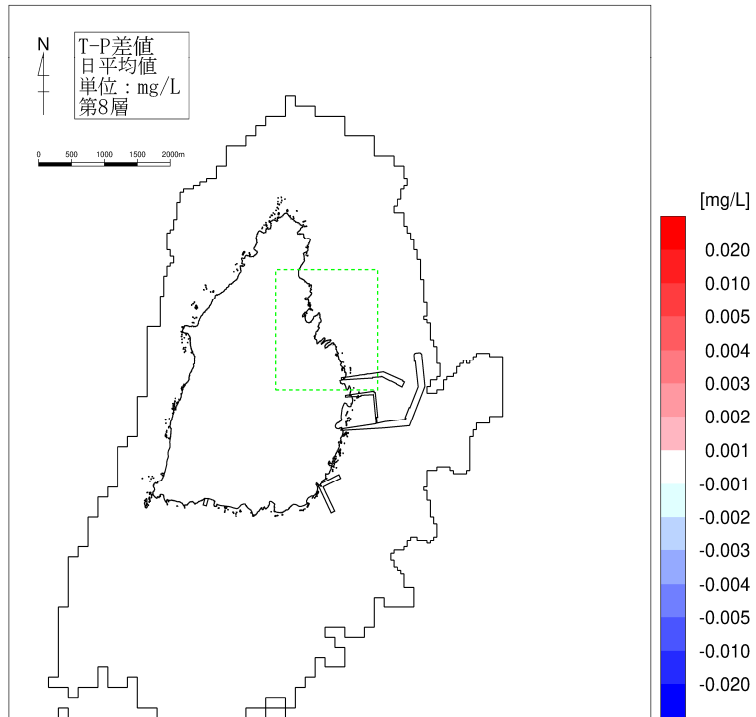


図-6. 6. 24(8) 供用時の水質濃度変化 (夏季、T-P、第8層[30~50m])

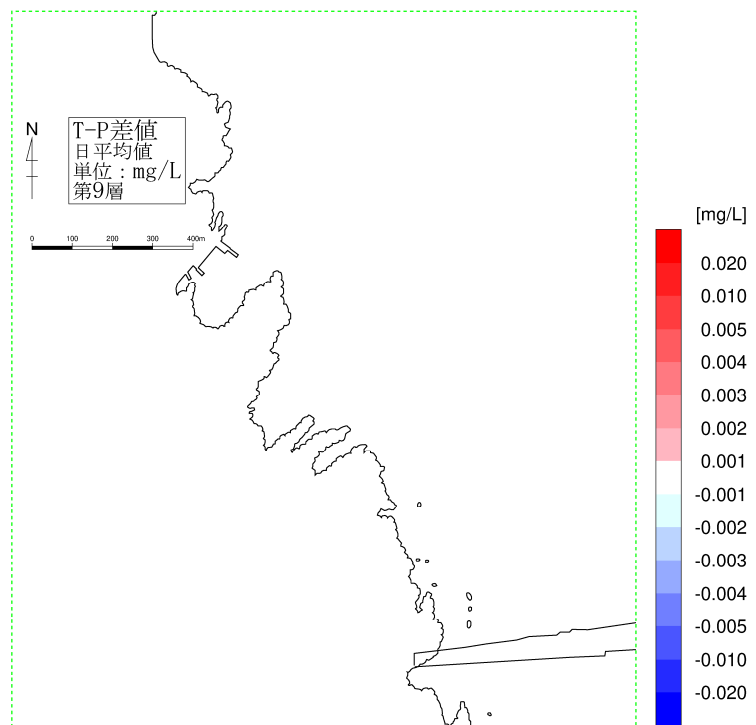
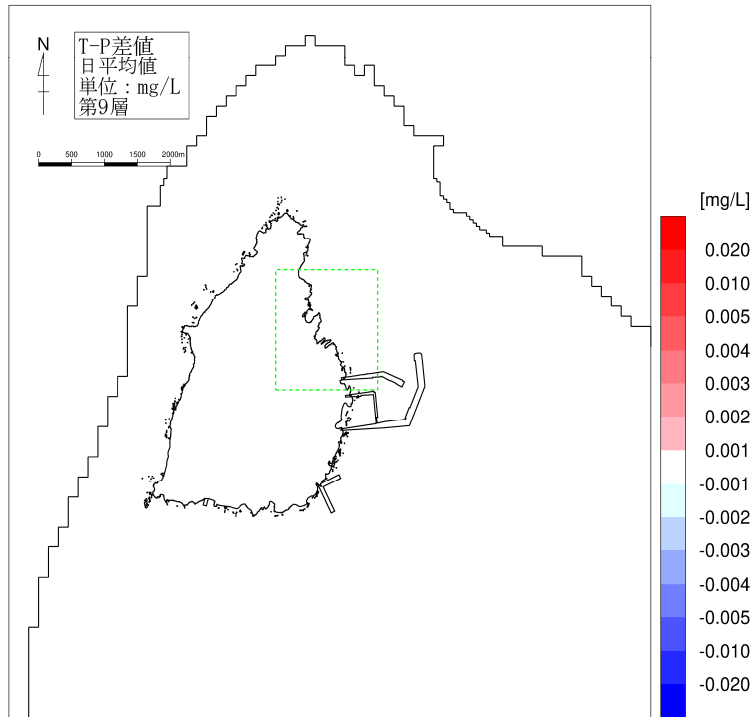


図-6. 6. 24(9) 供用時の水質濃度変化（夏季、T-P、第9層[50~100m]）

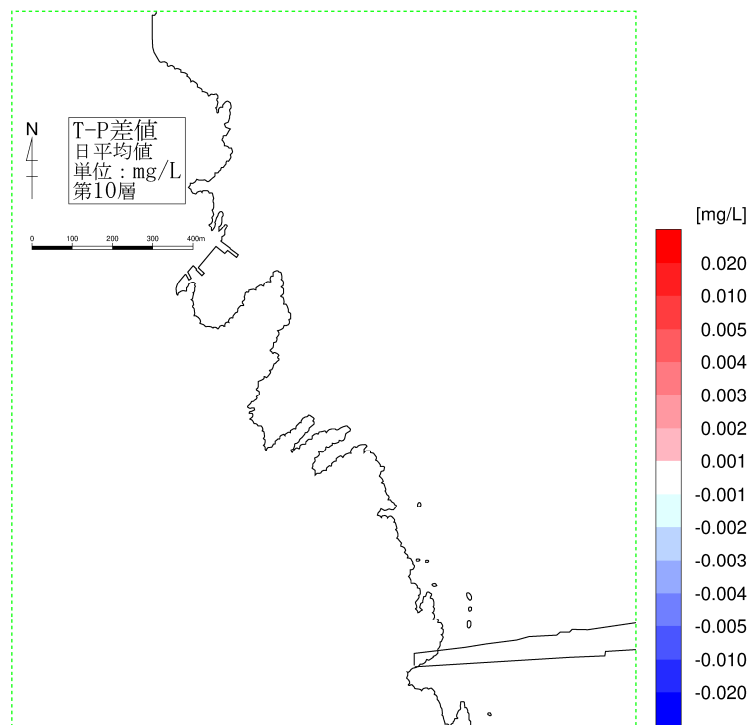
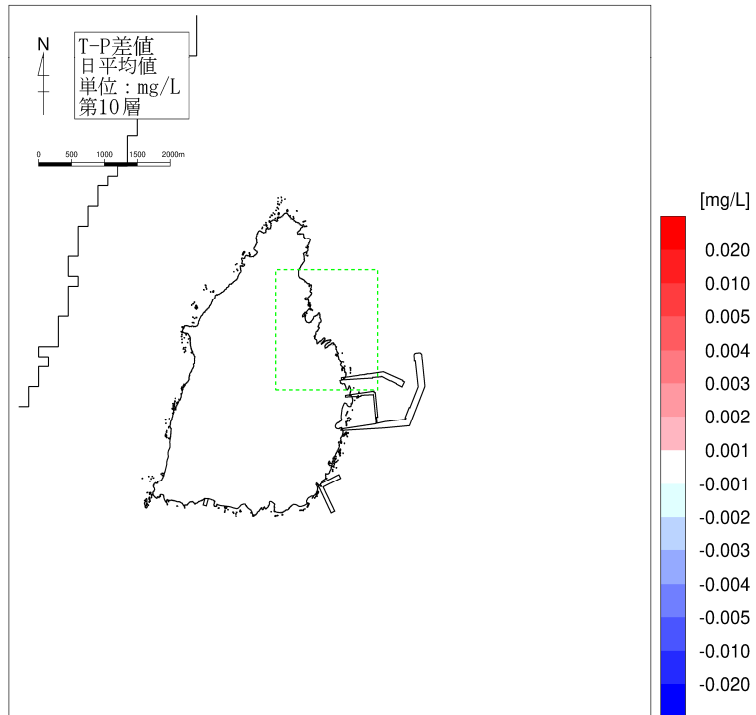


図-6.6.24(10) 供用時の水質濃度変化（夏季、T-P、第10層[100m以深]）



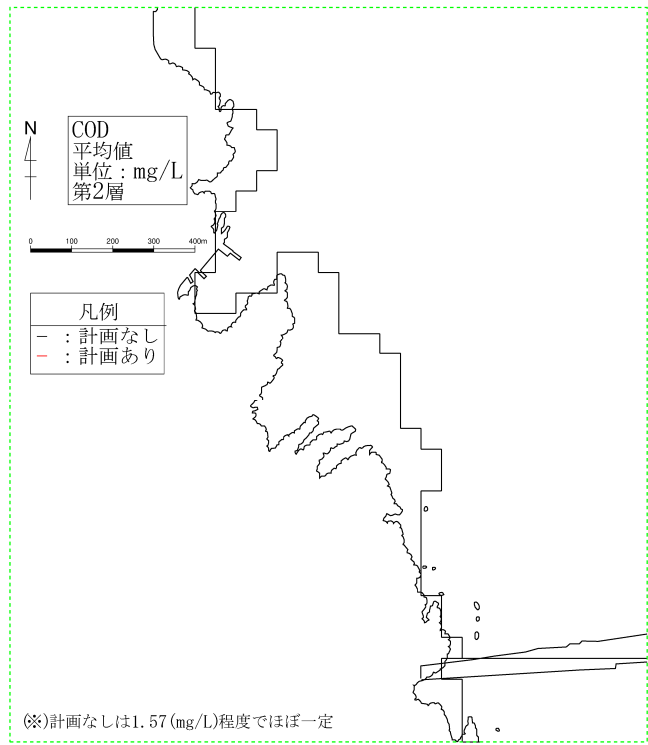
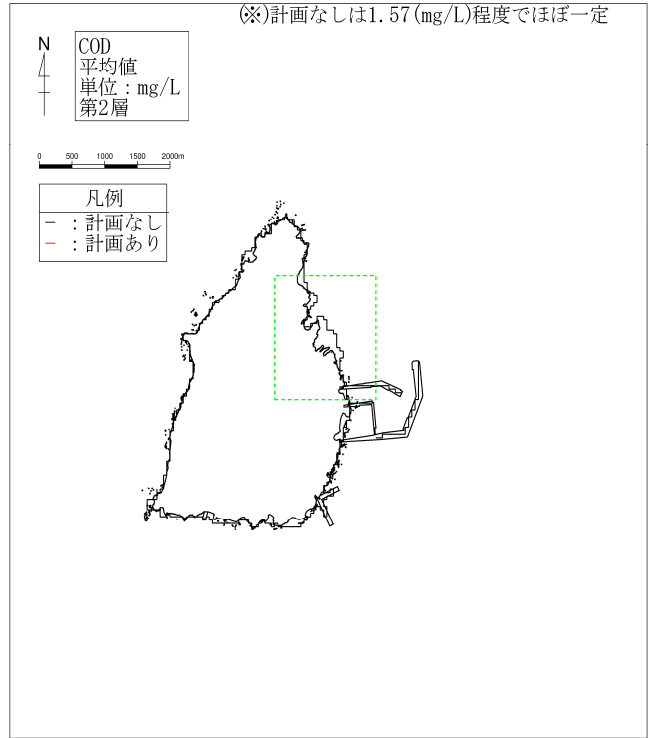


図-6.6.25(2) 供用時の水質濃度分布 (冬季COD、第2層[2~4m])

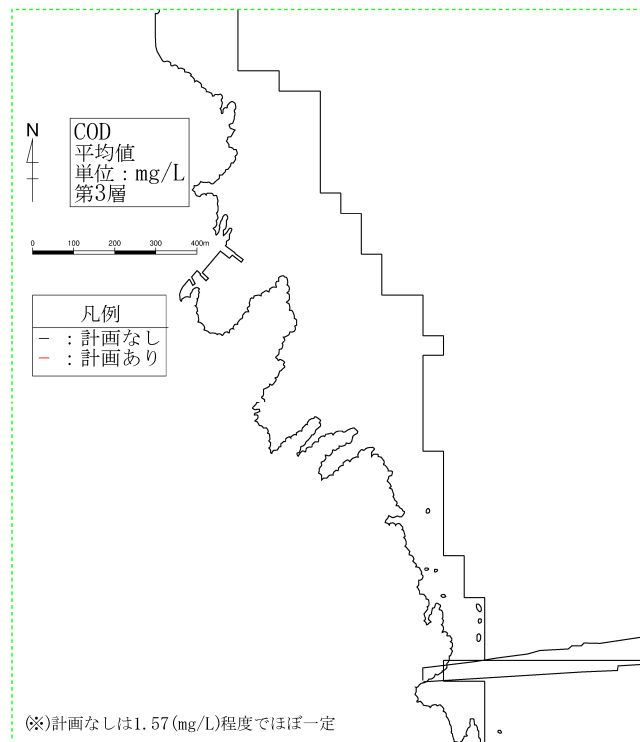
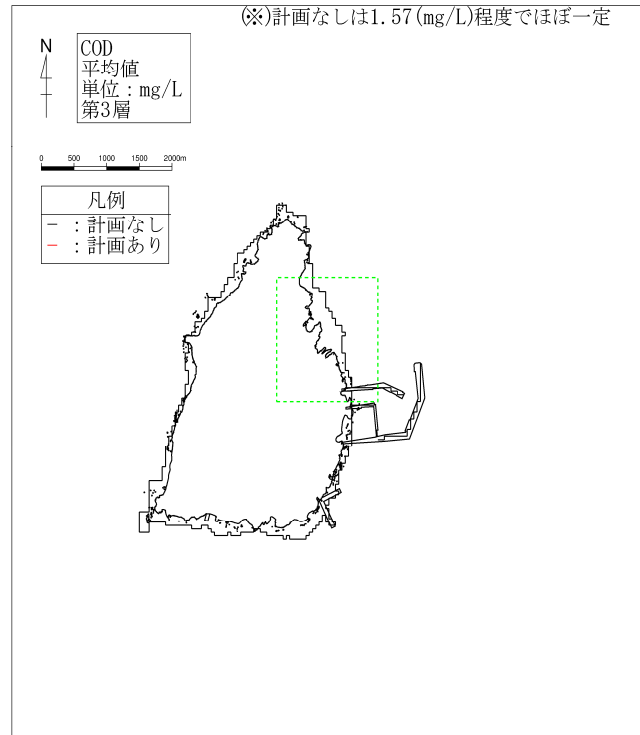


図-6.6.25(3) 供用時の水質濃度分布 (冬季COD、第3層[4~7m])

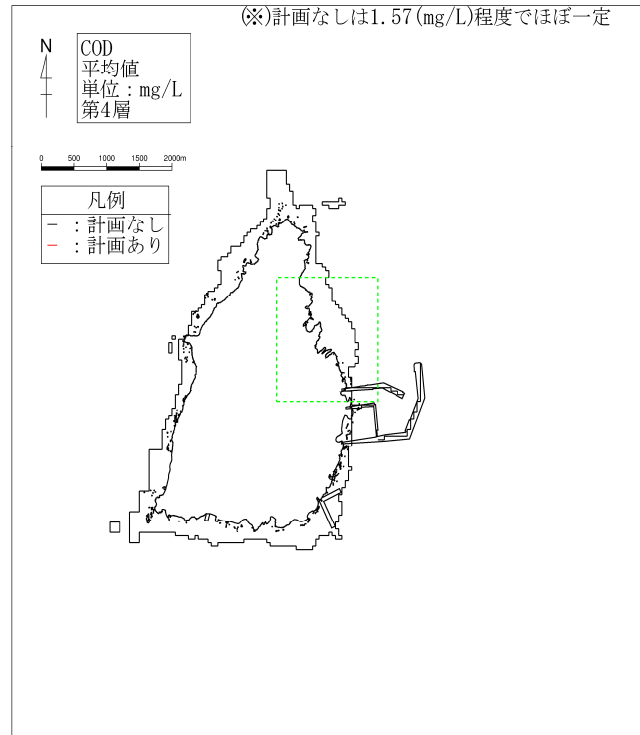


図-6.6.25(4) 供用時の水質濃度分布 (冬季COD、第4層[7~10m])



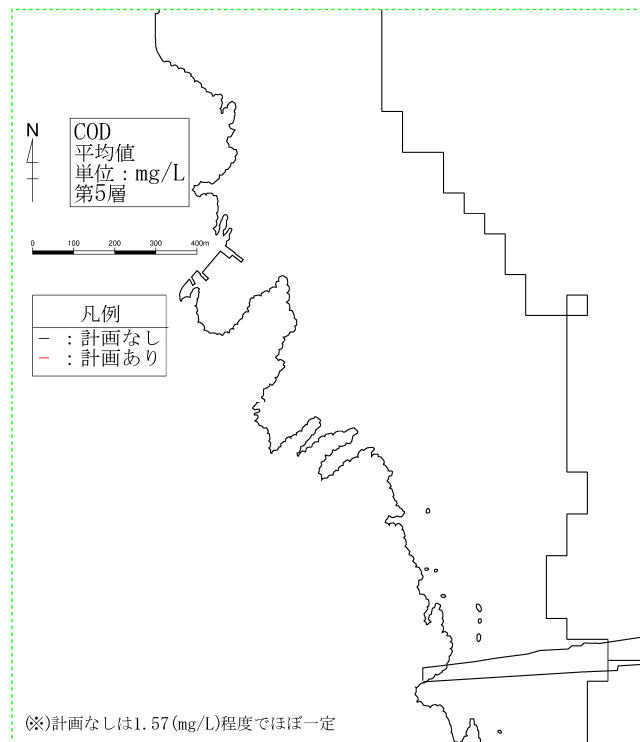
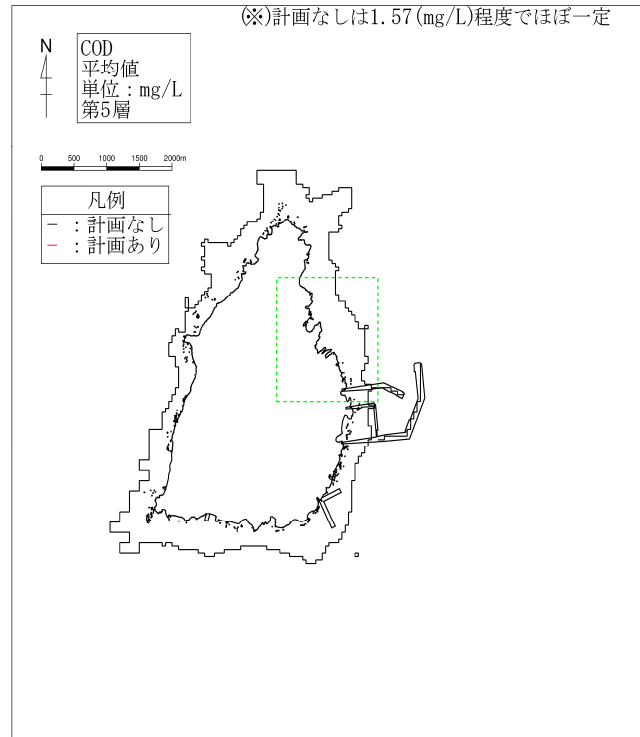


図-6.6.25(5) 供用時の水質濃度分布 (冬季COD、第5層[10~15m])

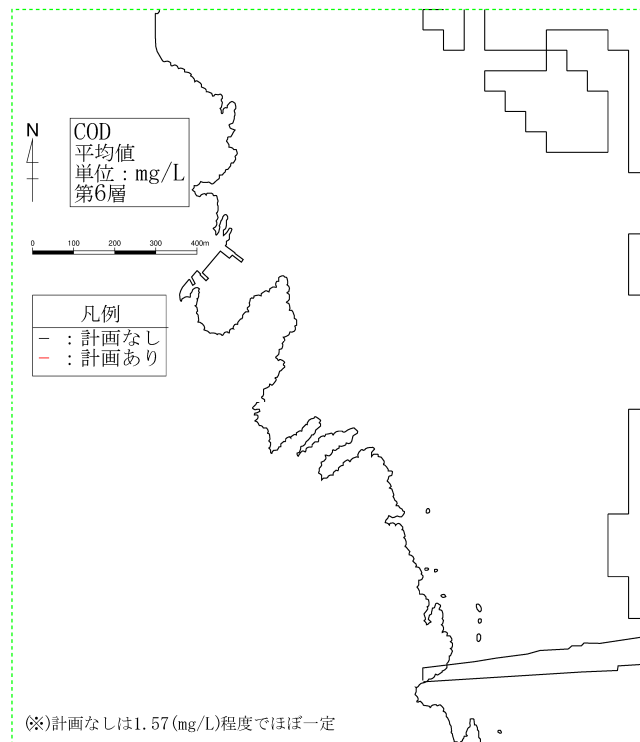
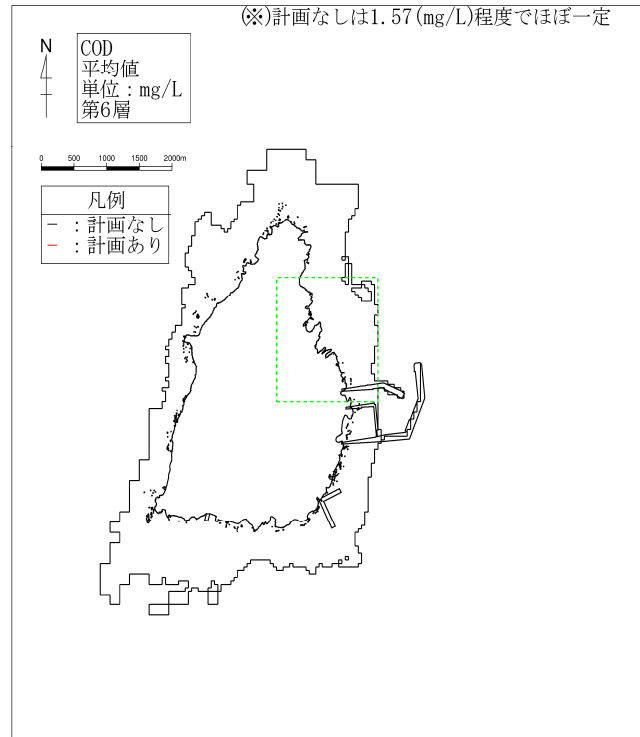


図-6.6.25(6) 供用時の水質濃度分布 (冬季COD、第6層[15~20m])

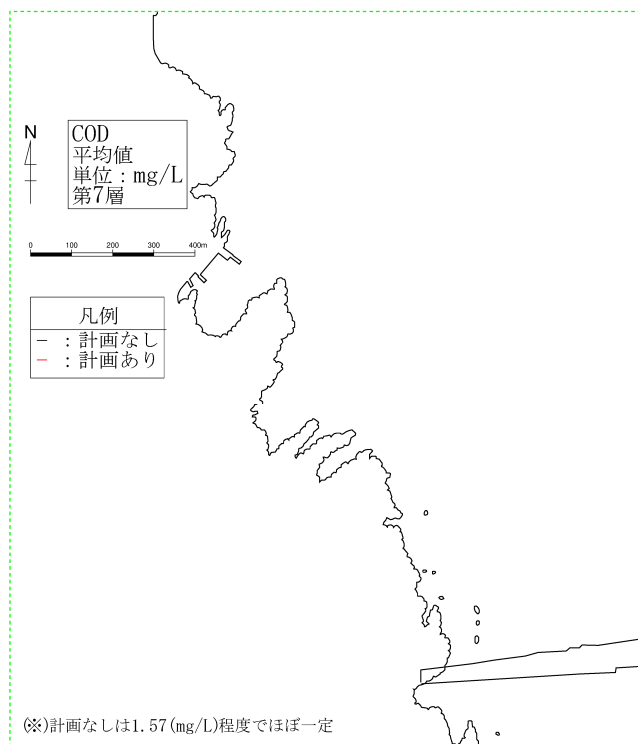
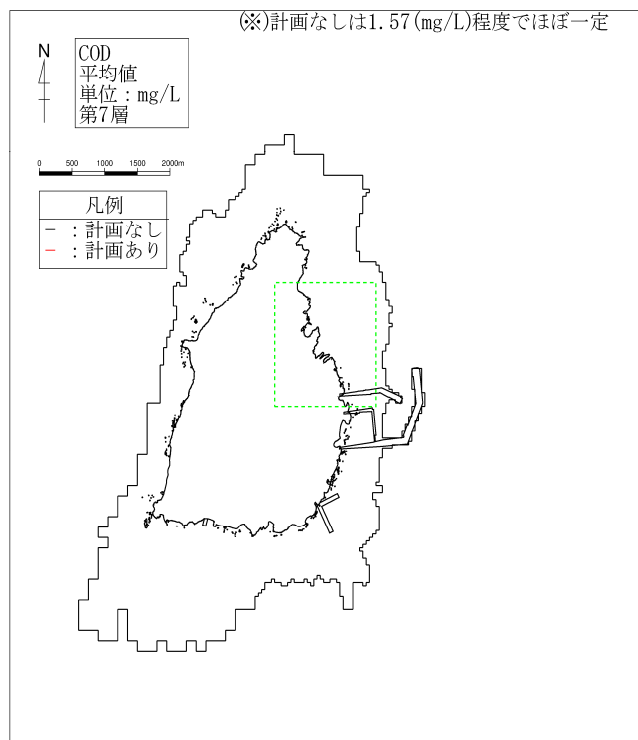


図-6.6.25(7) 供用時の水質濃度分布 (冬季COD、第7層[20~30m])

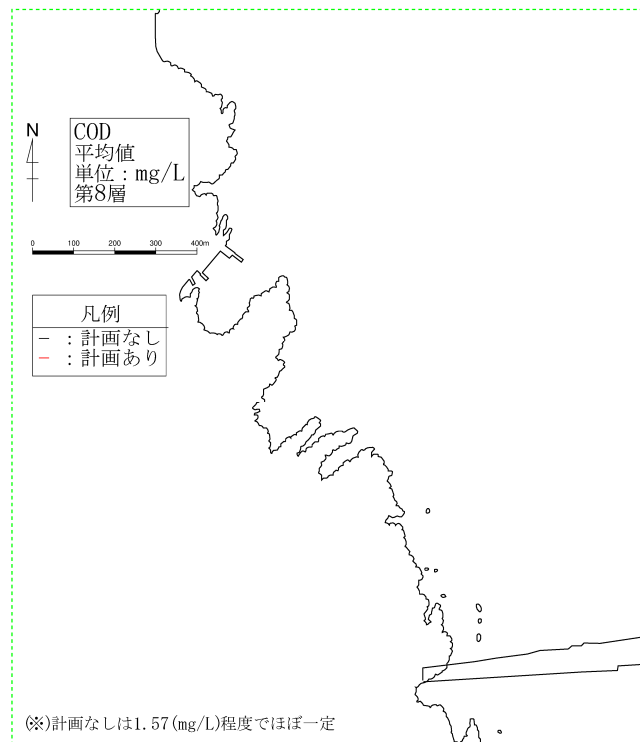
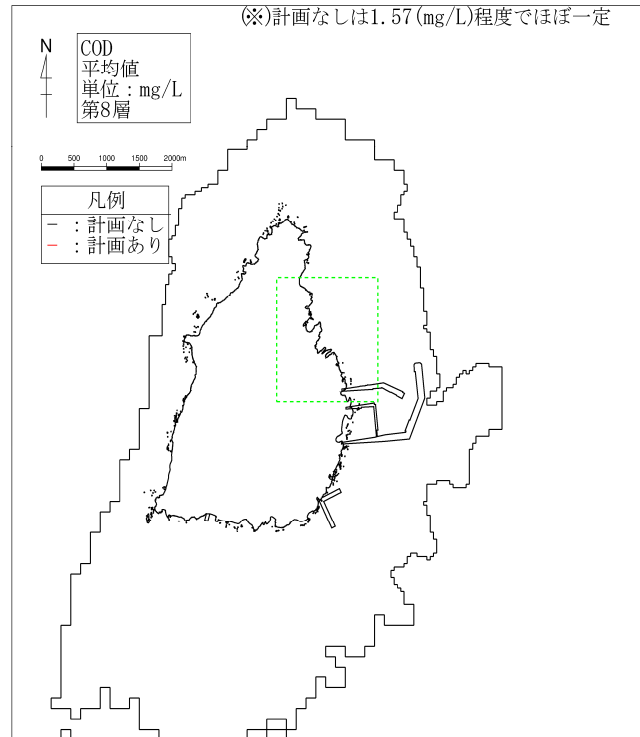


図-6.6.25(8) 供用時の水質濃度分布 (冬季COD、第8層[30~50m])

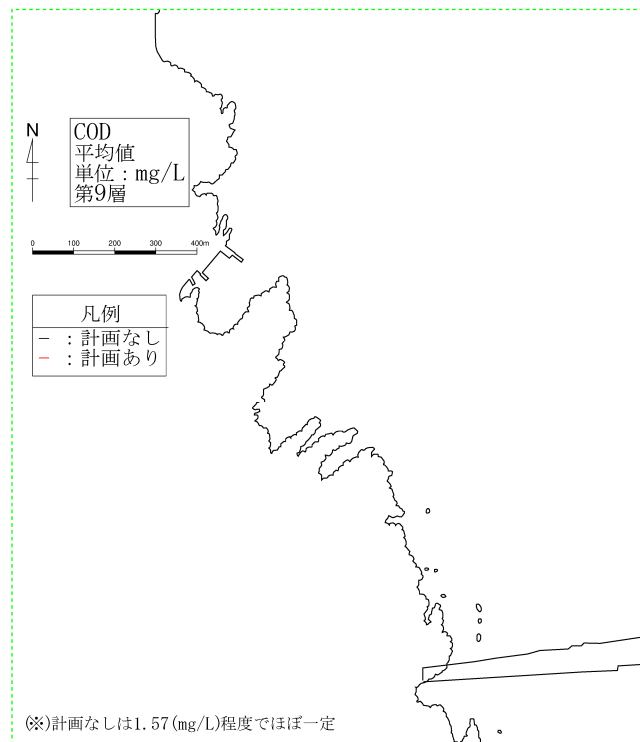
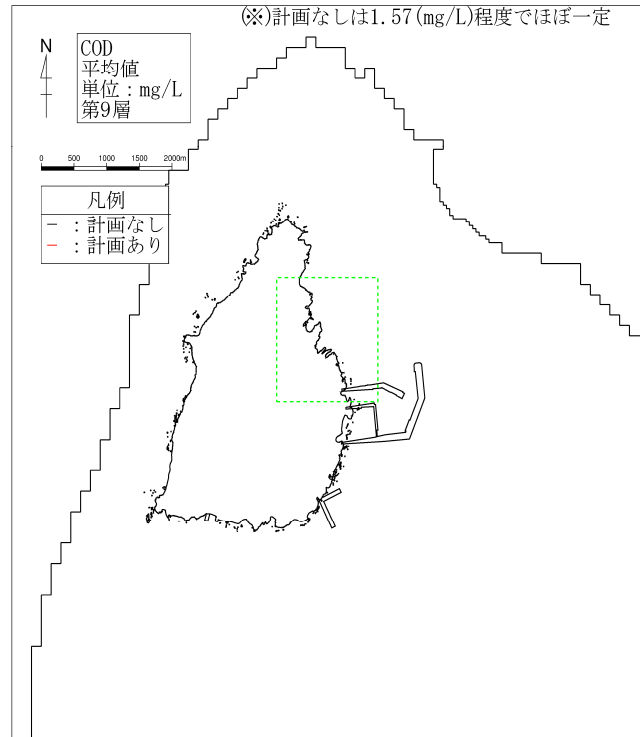


図-6. 6. 25(9) 供用時の水質濃度分布 (冬季 COD、第9層[50~100m])

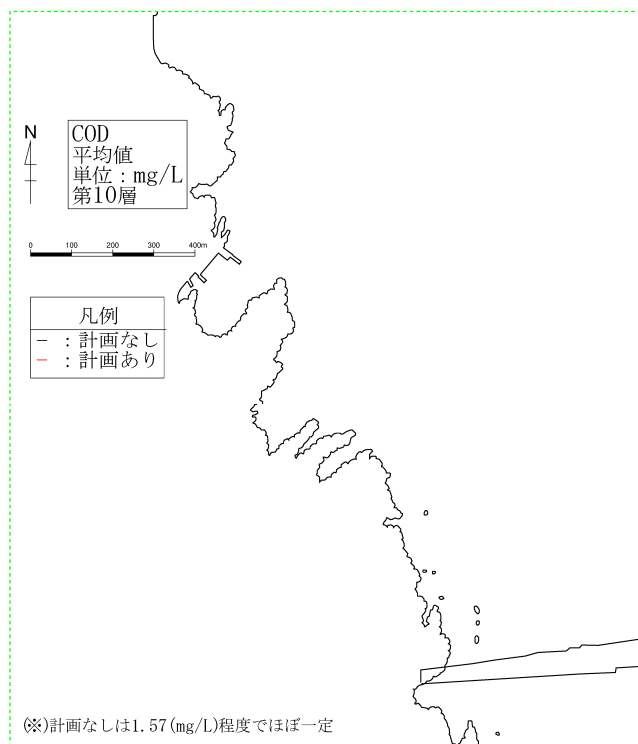
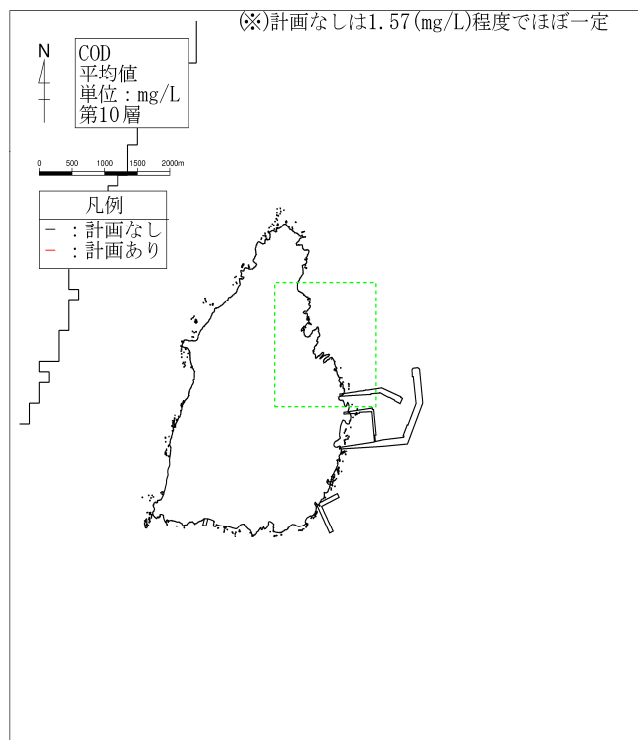


図-6. 6. 25(10) 供用時の水質濃度分布 (冬季COD、第10層[100m以深])

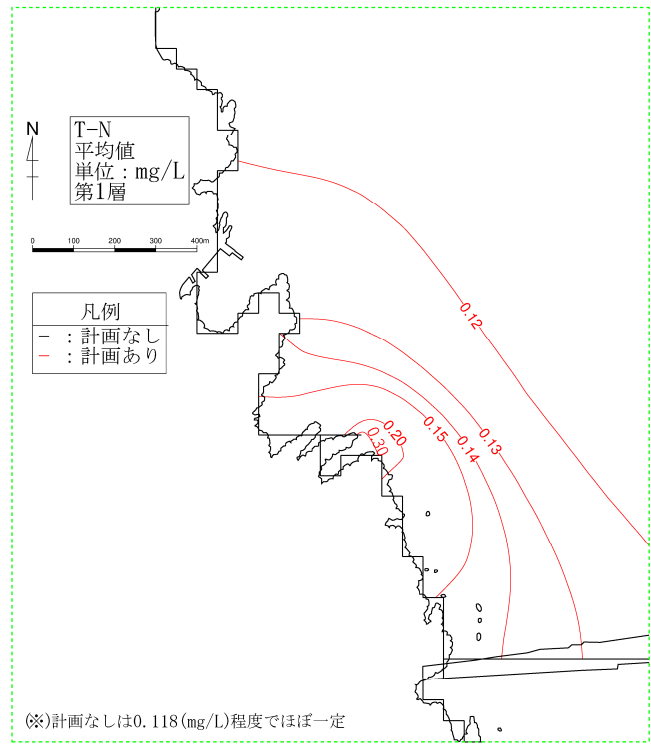
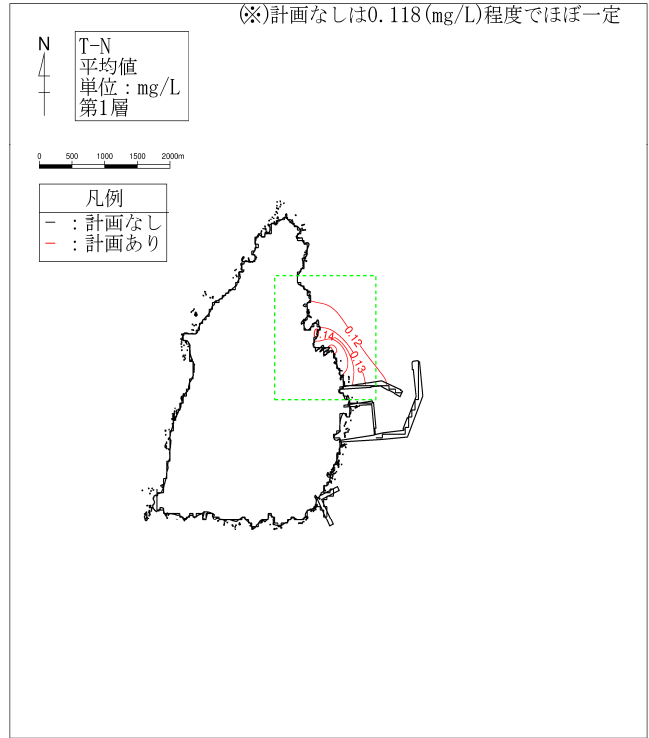


図-6.6.26(1) 供用時の水質濃度分布 (冬季T-N、第1層[0~2m])

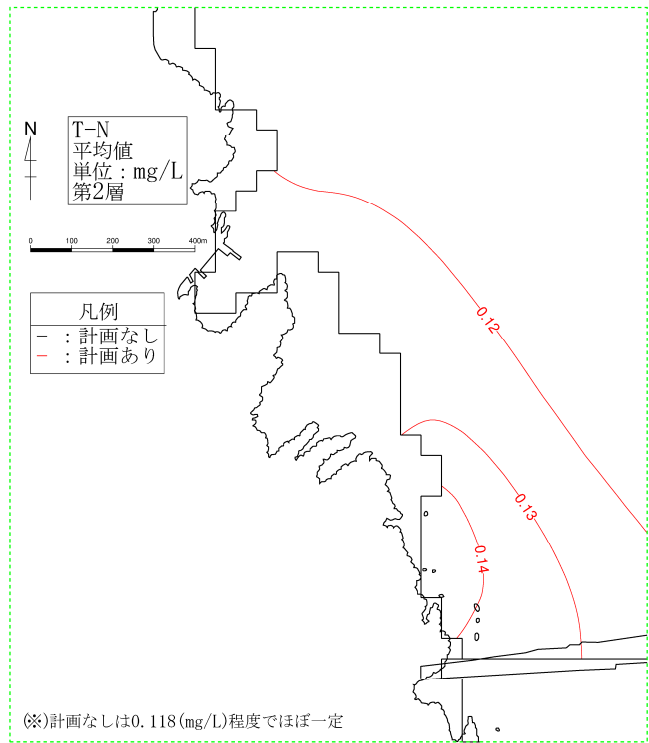
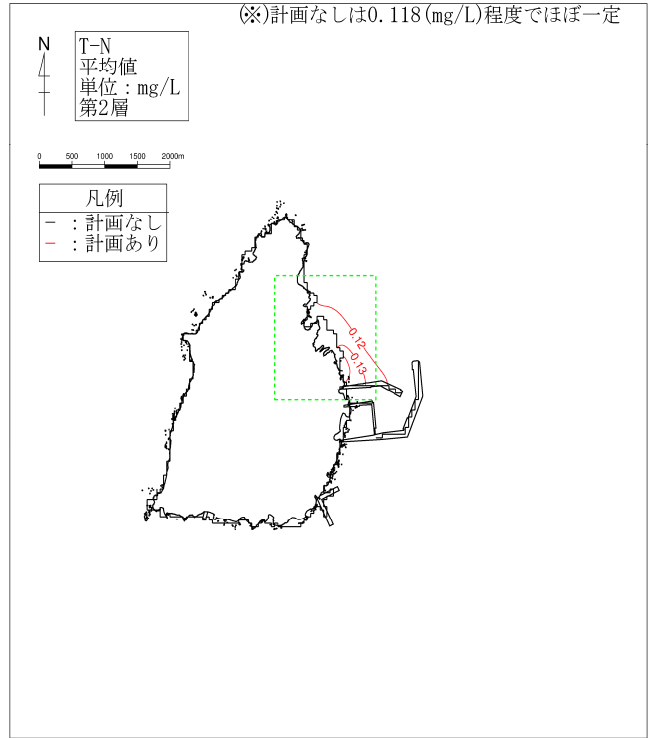


図-6.6.26(2) 供用時の水質濃度分布 (冬季T-N、第2層[2~4m])



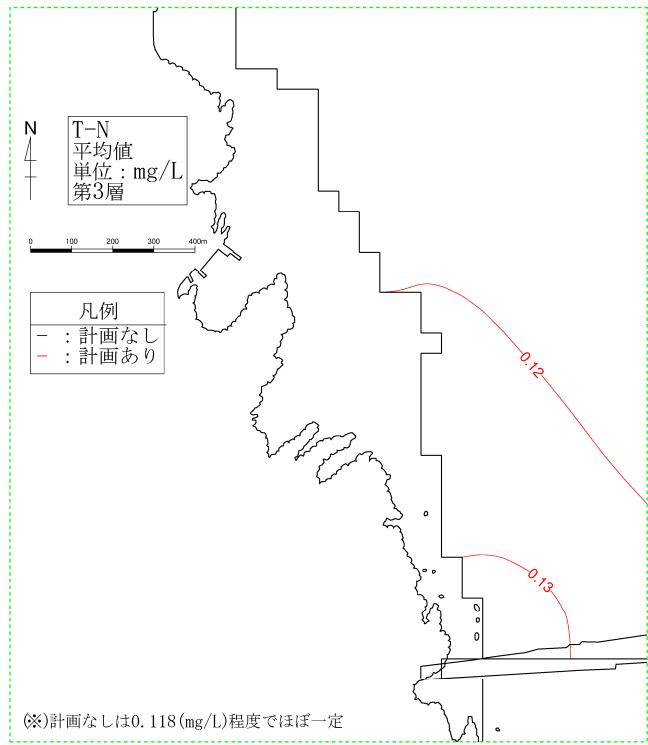
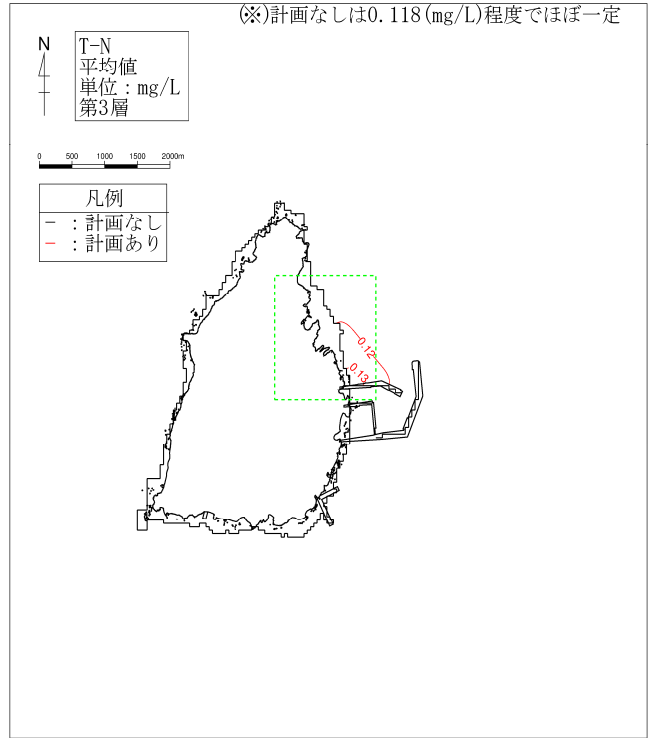


図-6.6.26(3) 供用時の水質濃度分布（冬季T-N、第3層[4~7m]）

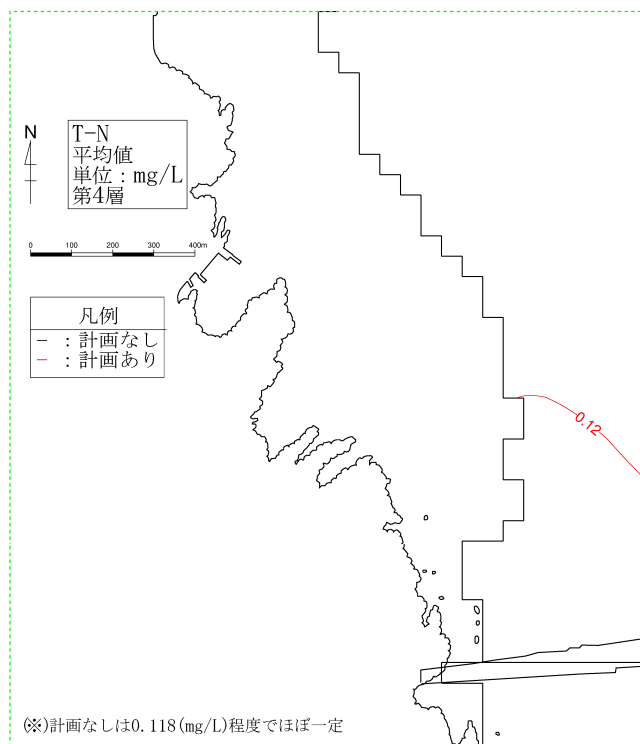
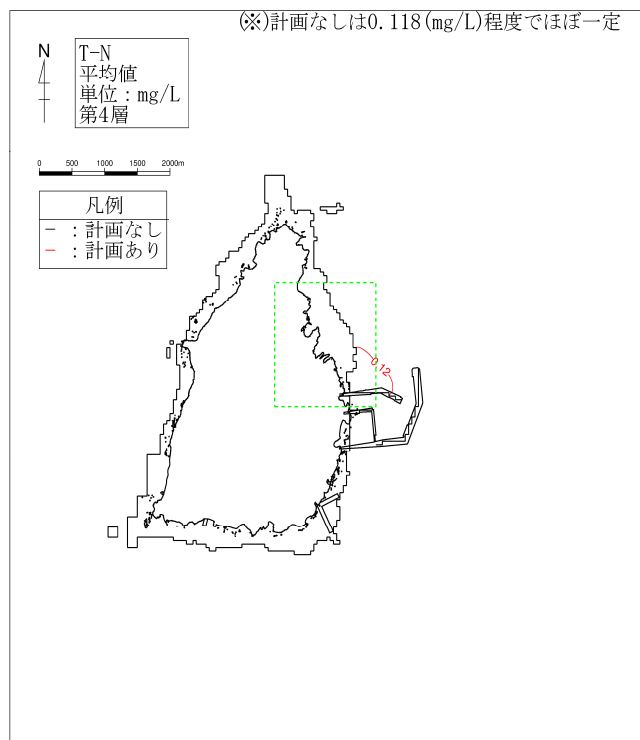


図-6.6.26(4) 供用時の水質濃度分布 (冬季 T-N、第4層[7~10m])

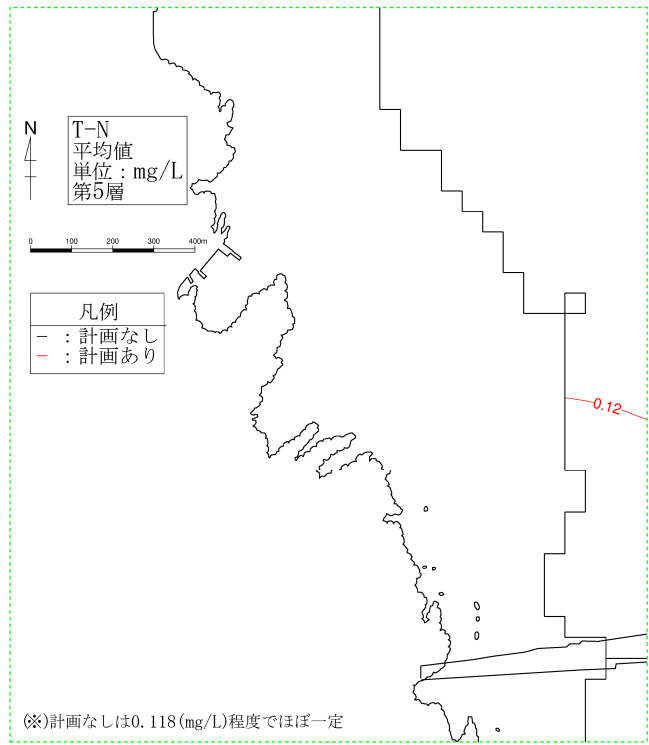
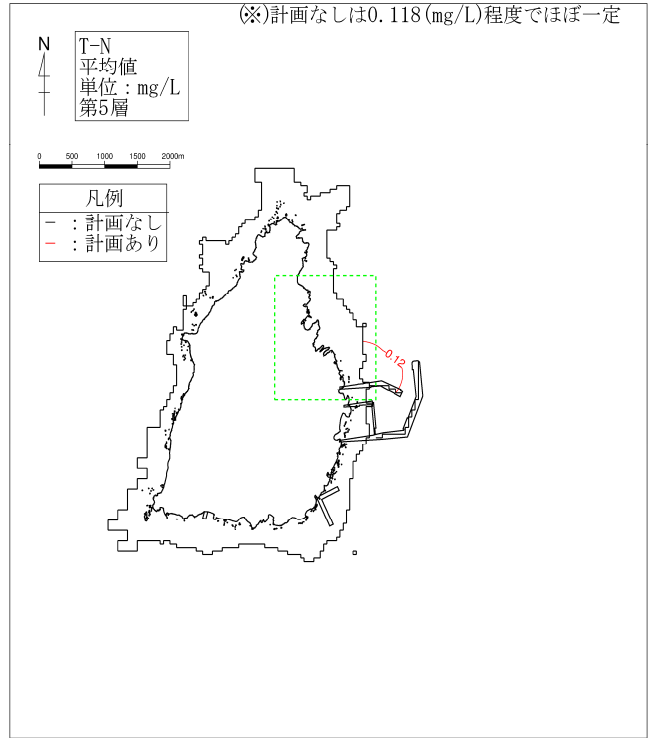


図-6.6.26(5) 供用時の水質濃度分布 (冬季T-N、第5層[10~15m])

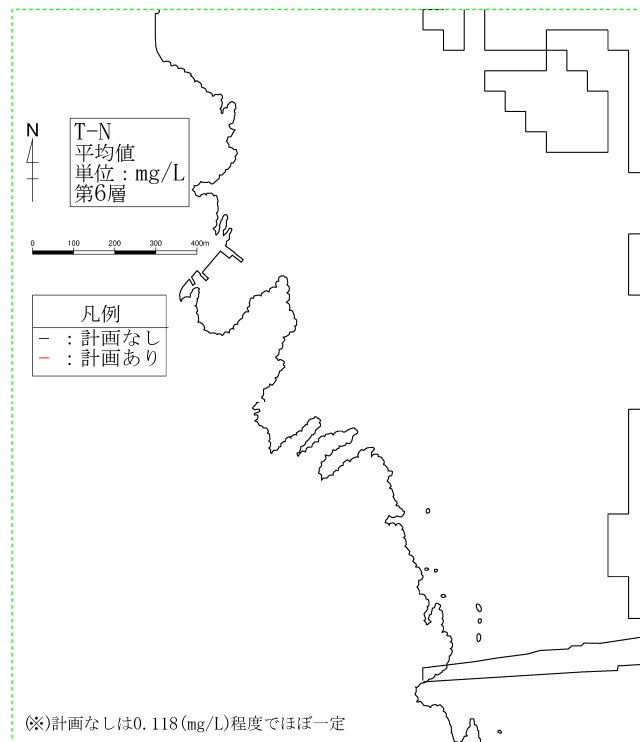
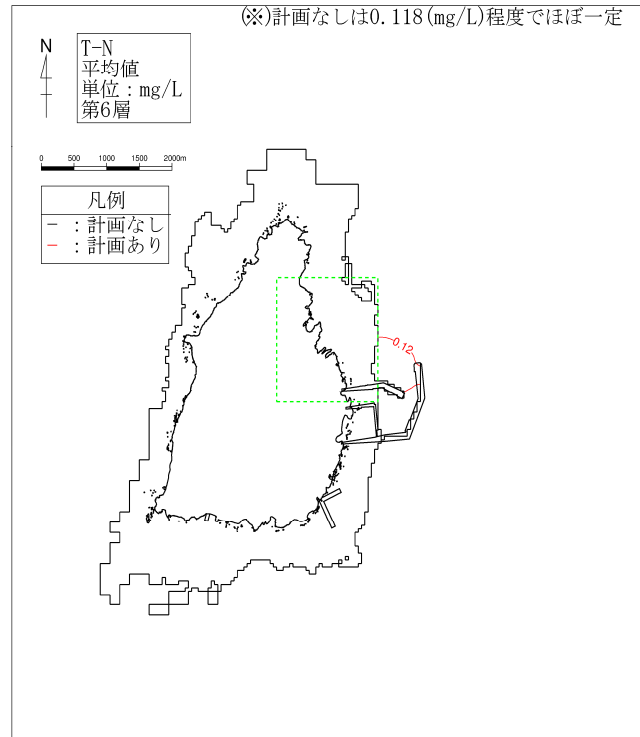


図-6.6.26(6) 供用時の水質濃度分布 (冬季T-N、第6層[15~20m])

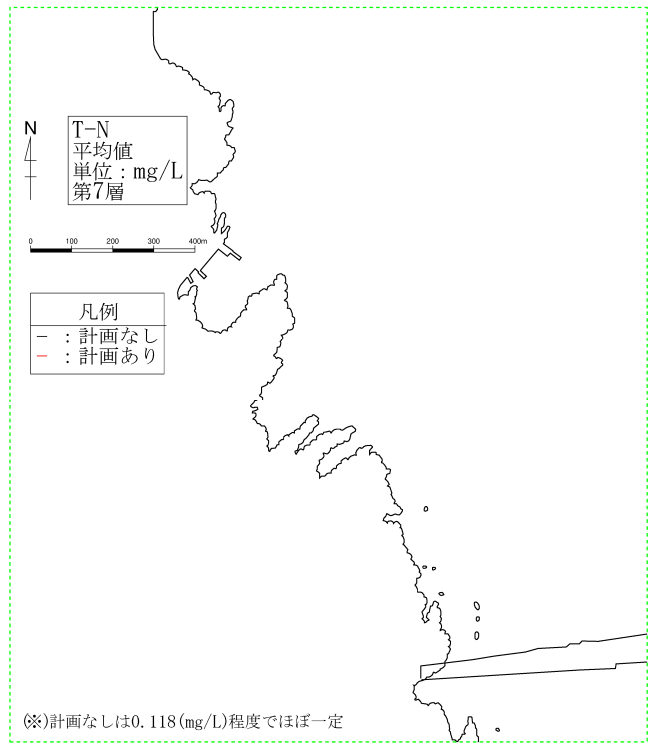
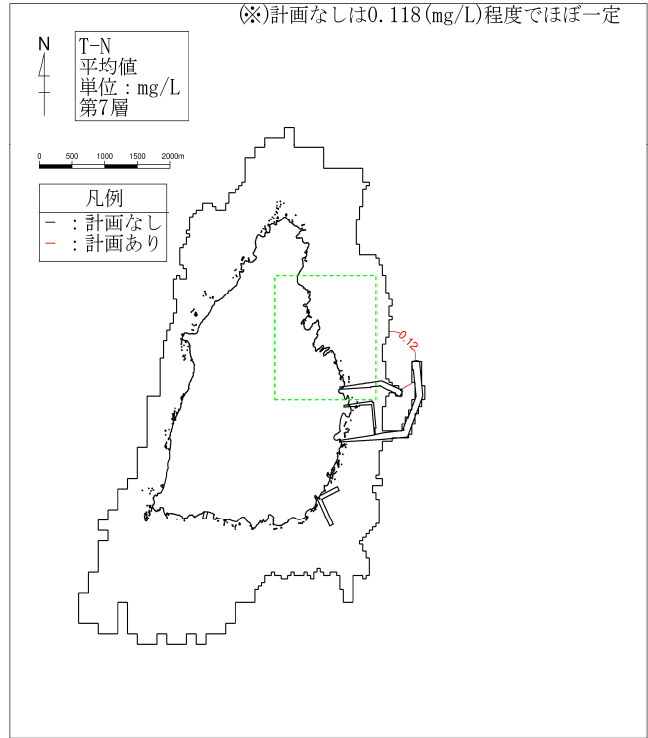


図-6.6.26(7) 供用時の水質濃度分布 (冬季T-N、第7層[20~30m])

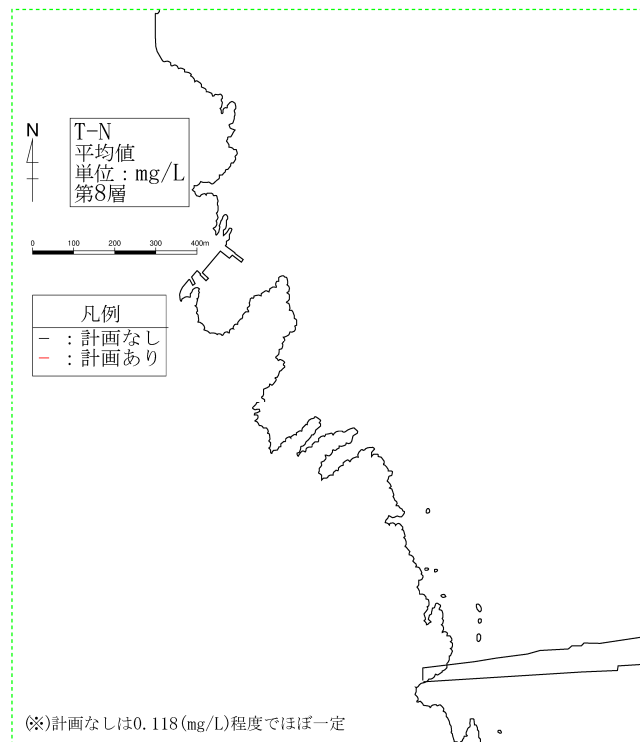
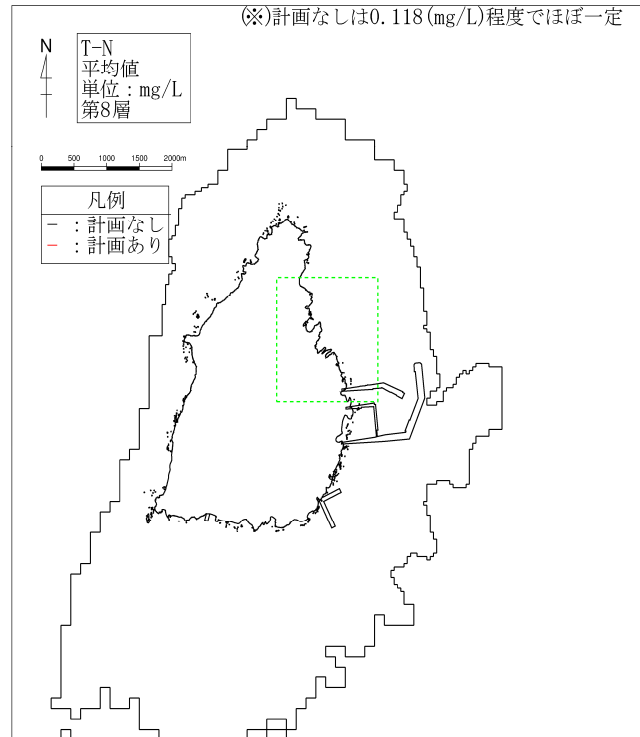


図-6.6.26(8) 供用時の水質濃度分布 (冬季T-N、第8層[30~50m])

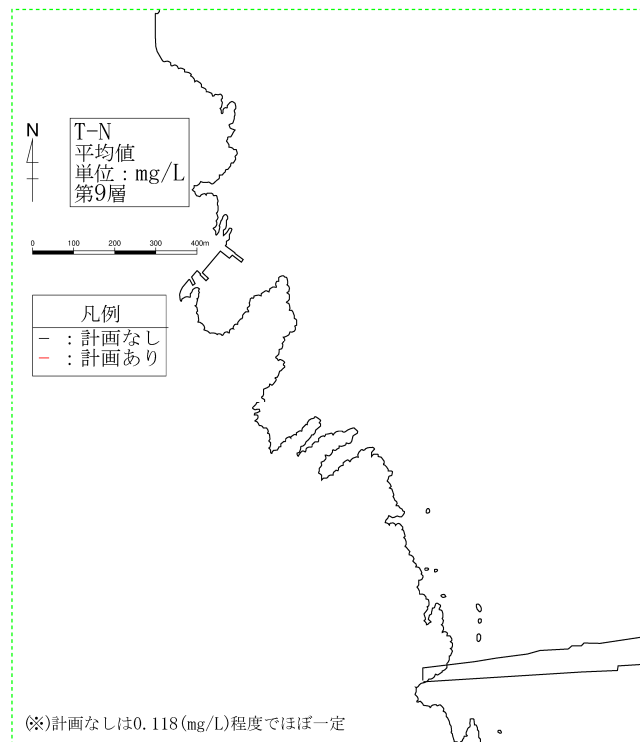
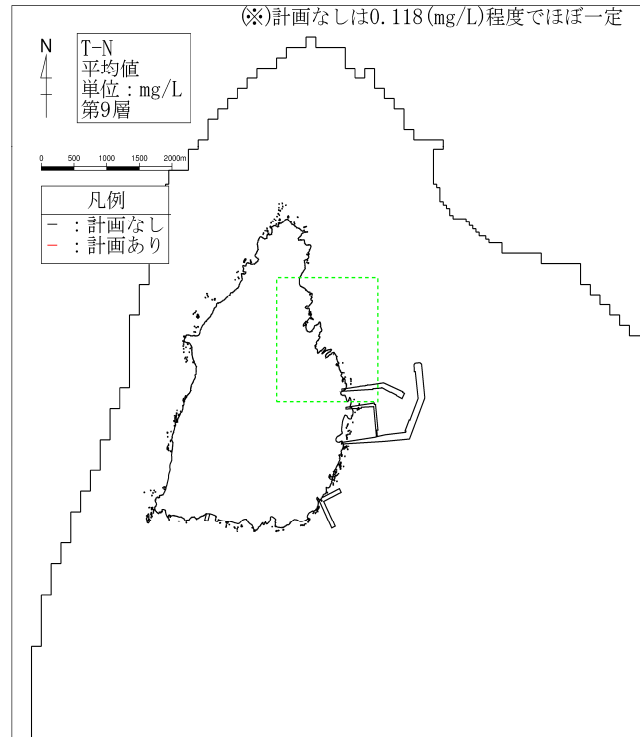


図-6. 6. 26(9) 供用時の水質濃度分布 (冬季 T-N、第 9 層[50~100m])

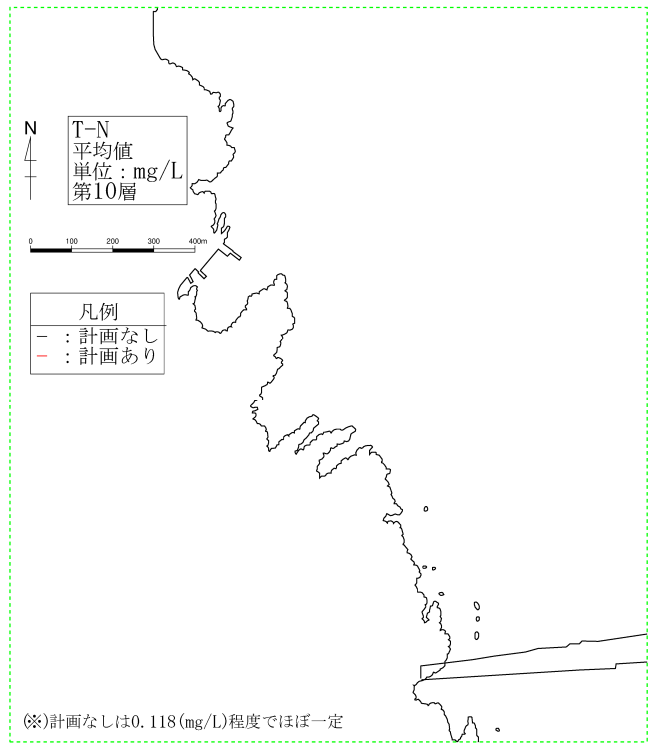
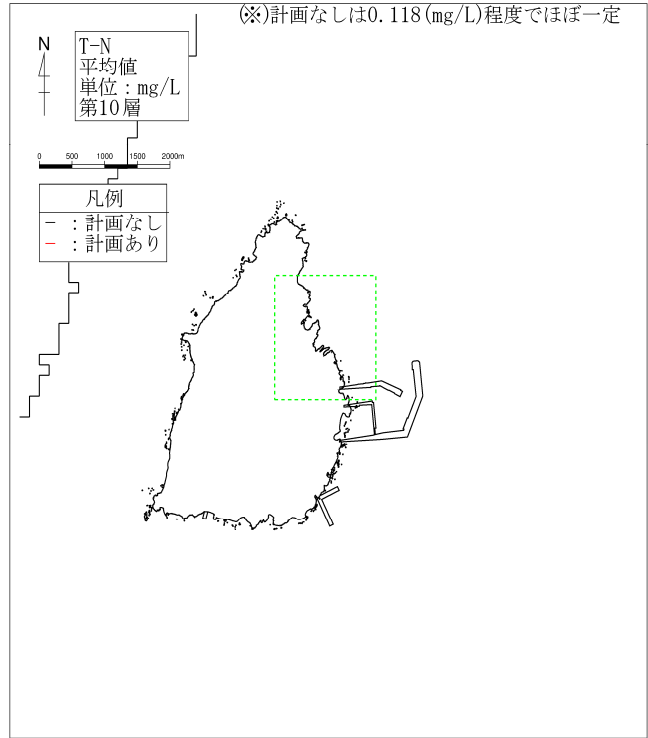


図-6. 6. 26(10) 供用時の水質濃度分布 (冬季 T-N、第 10 層 [100m 以深])