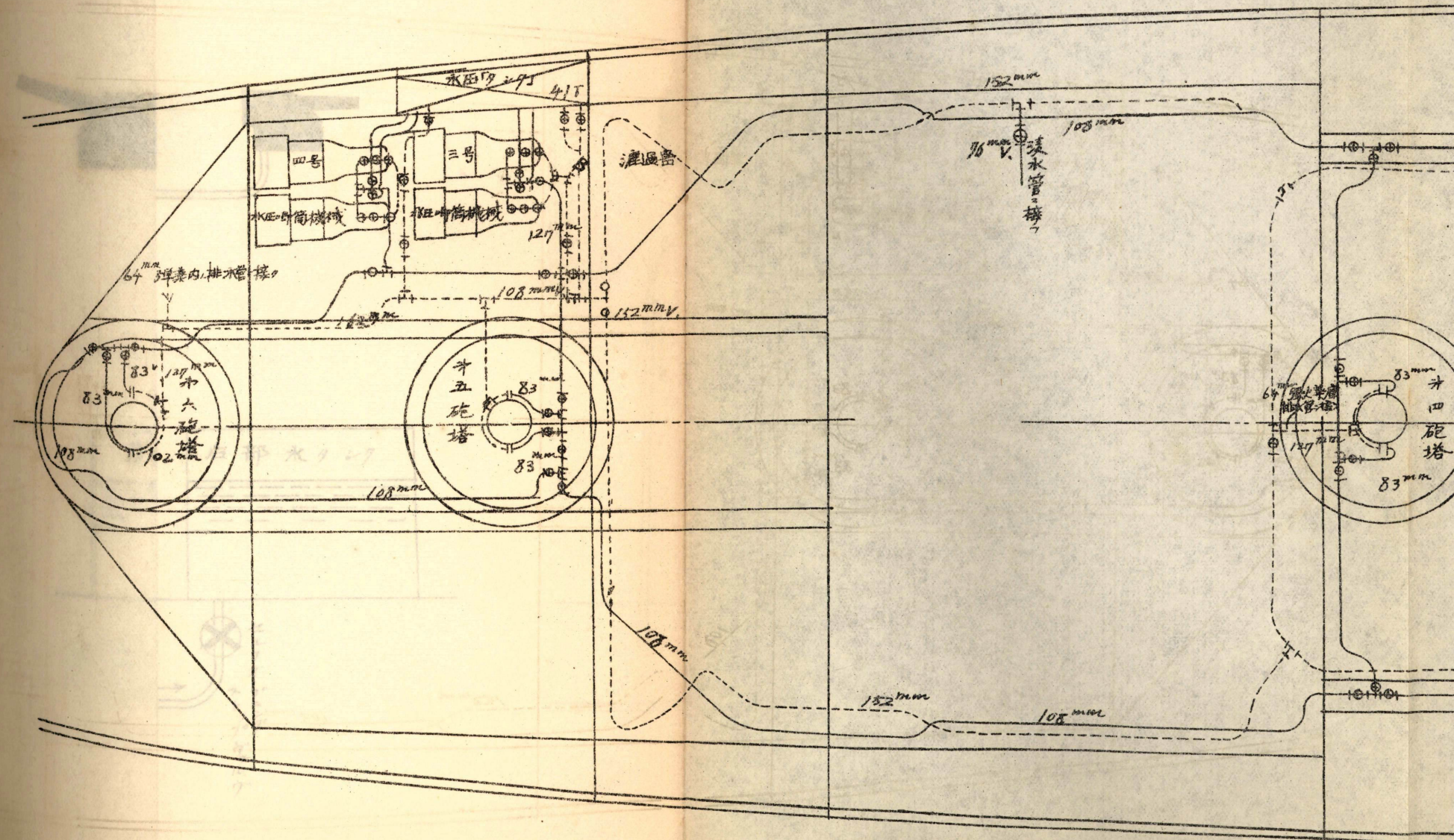
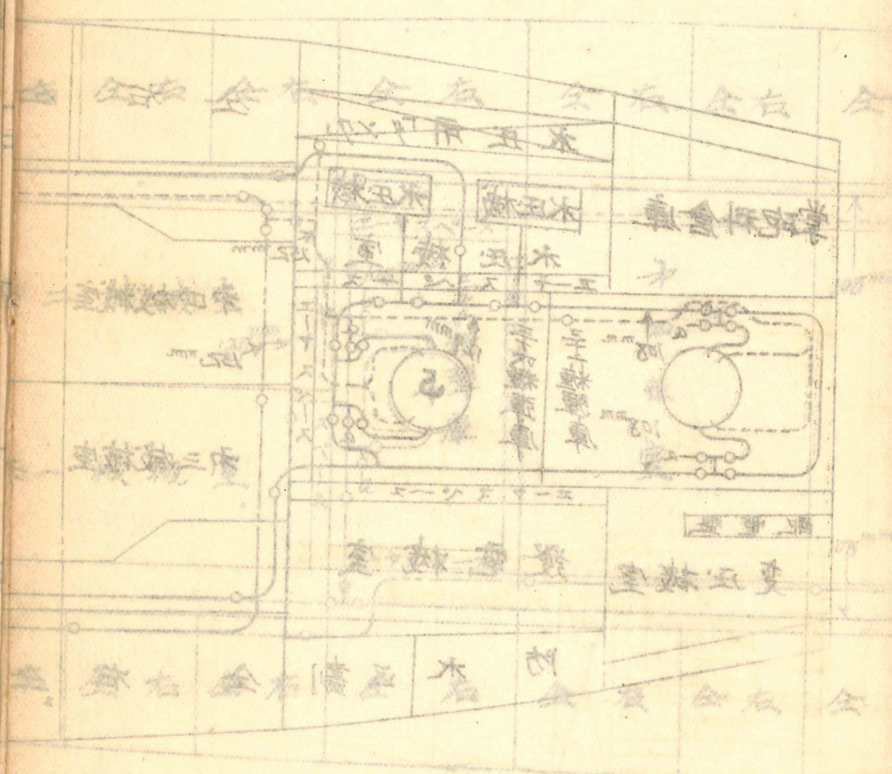


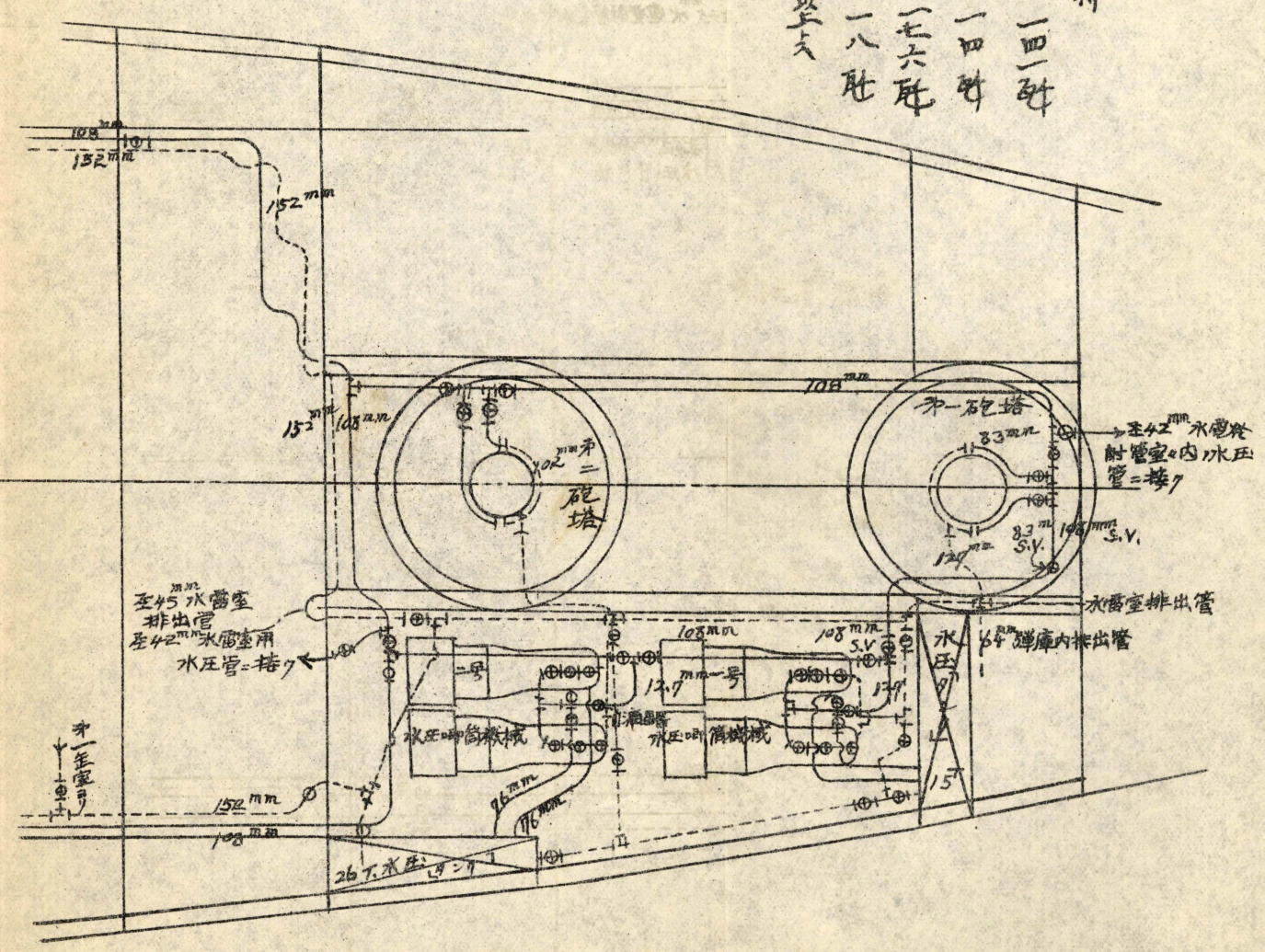
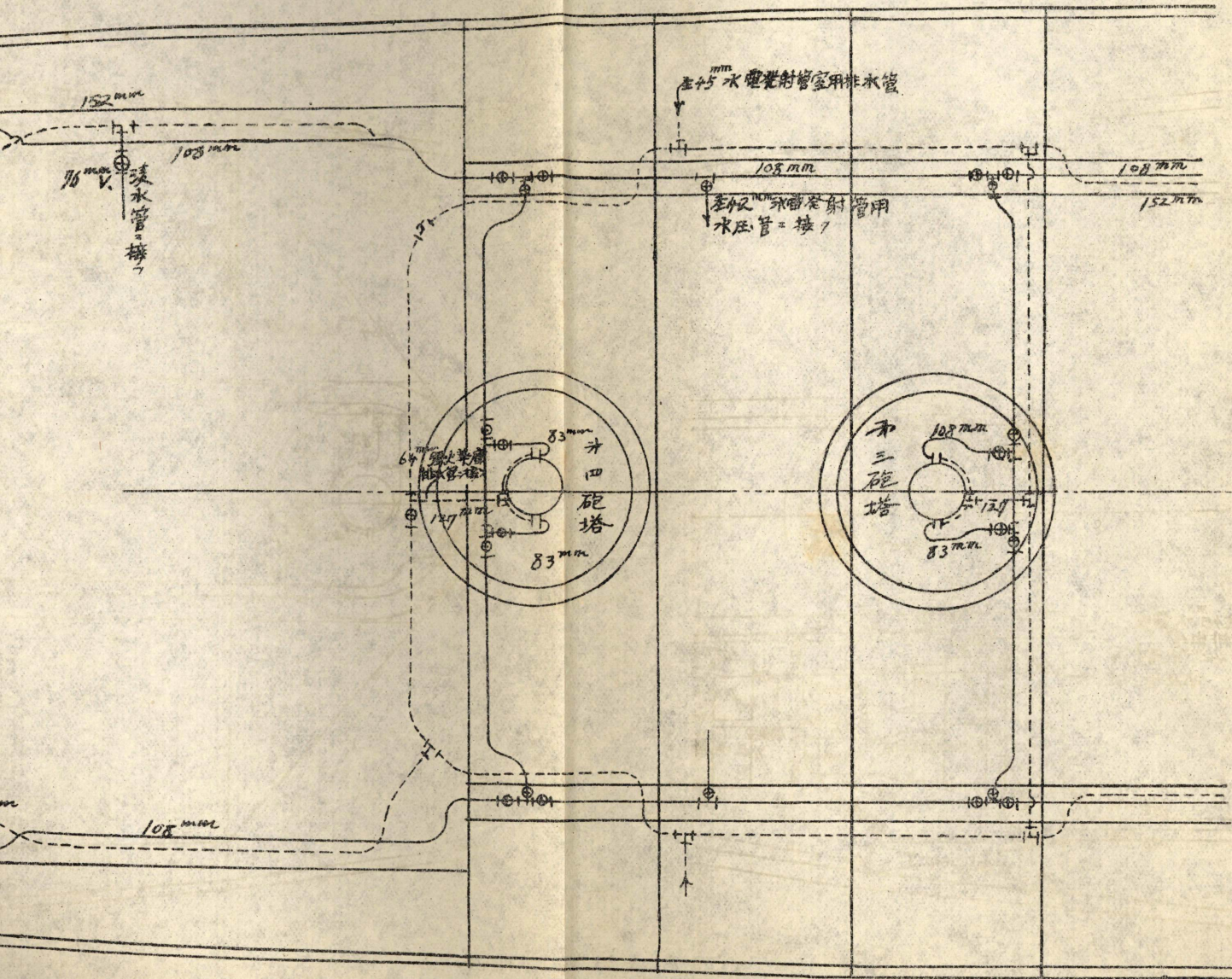
軍艦山城砲塔外

第十



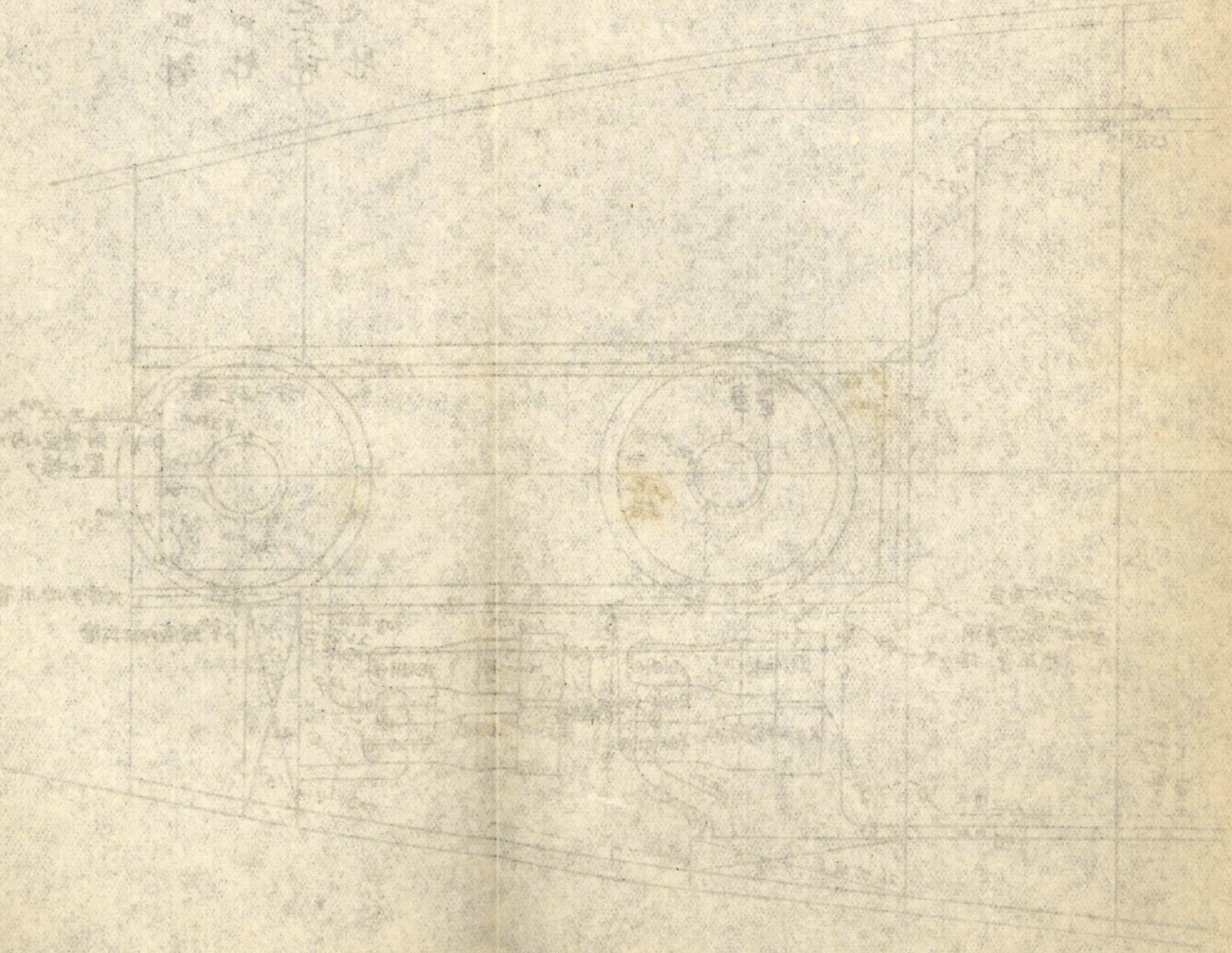
第十四圖，四

日向永压及排水装置

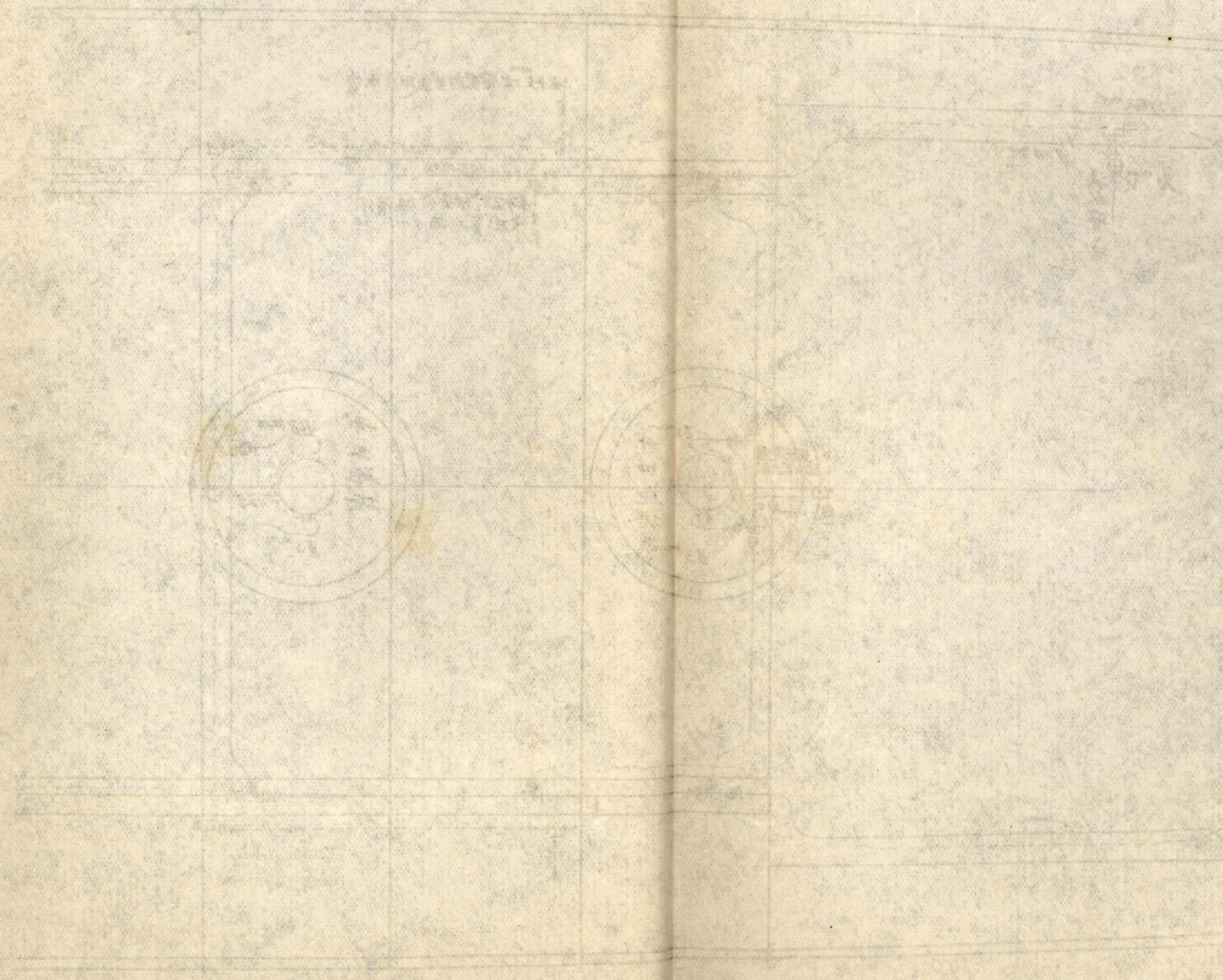


一試驗压力每平方厘米  
 組立時 水压管一四一吋  
 排水管一四吋  
 分解時 水压管一七六吋  
 排水管一八吋  
 一管由半至六英寸倍以上

一、...  
二、...  
三、...  
四、...  
五、...



一、...  
二、...  
三、...



第 5 図

排水主管連絡図解

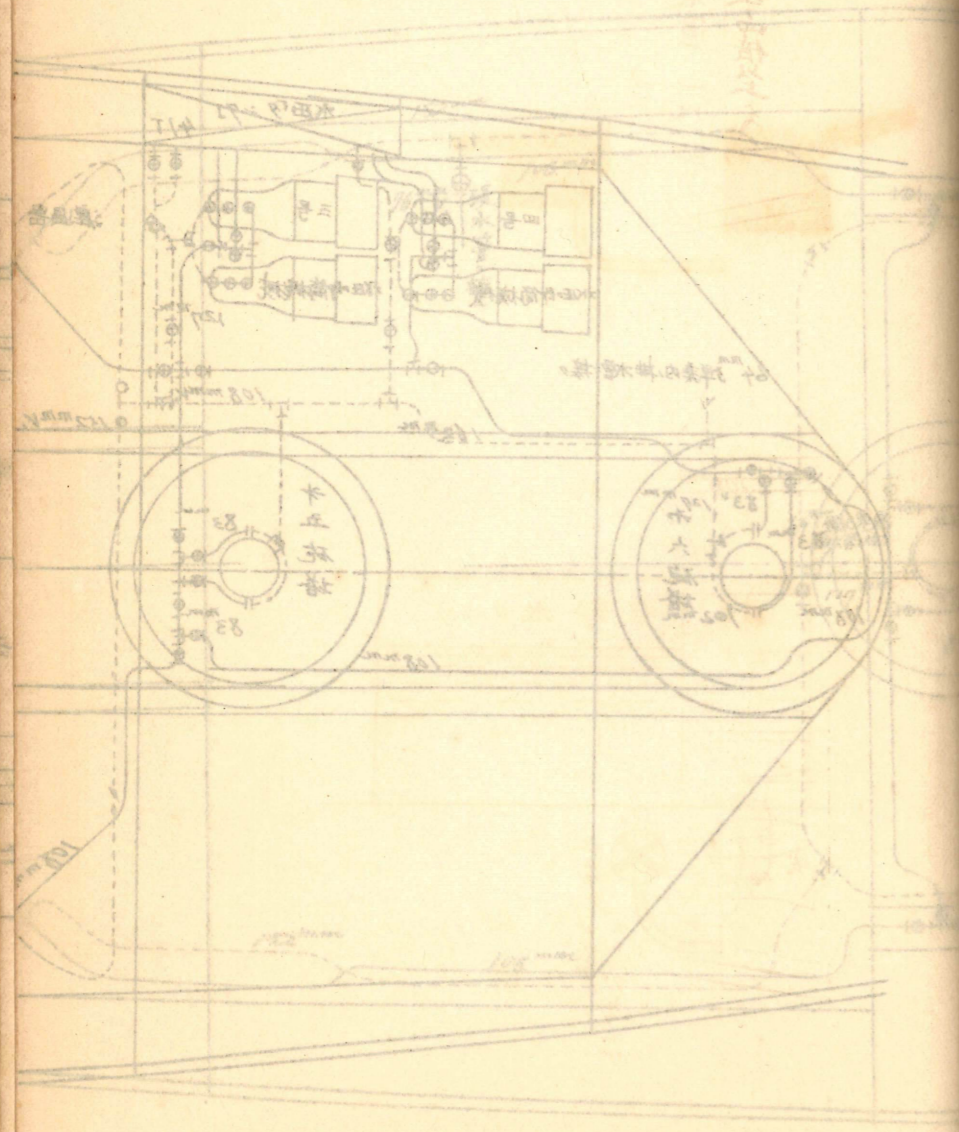
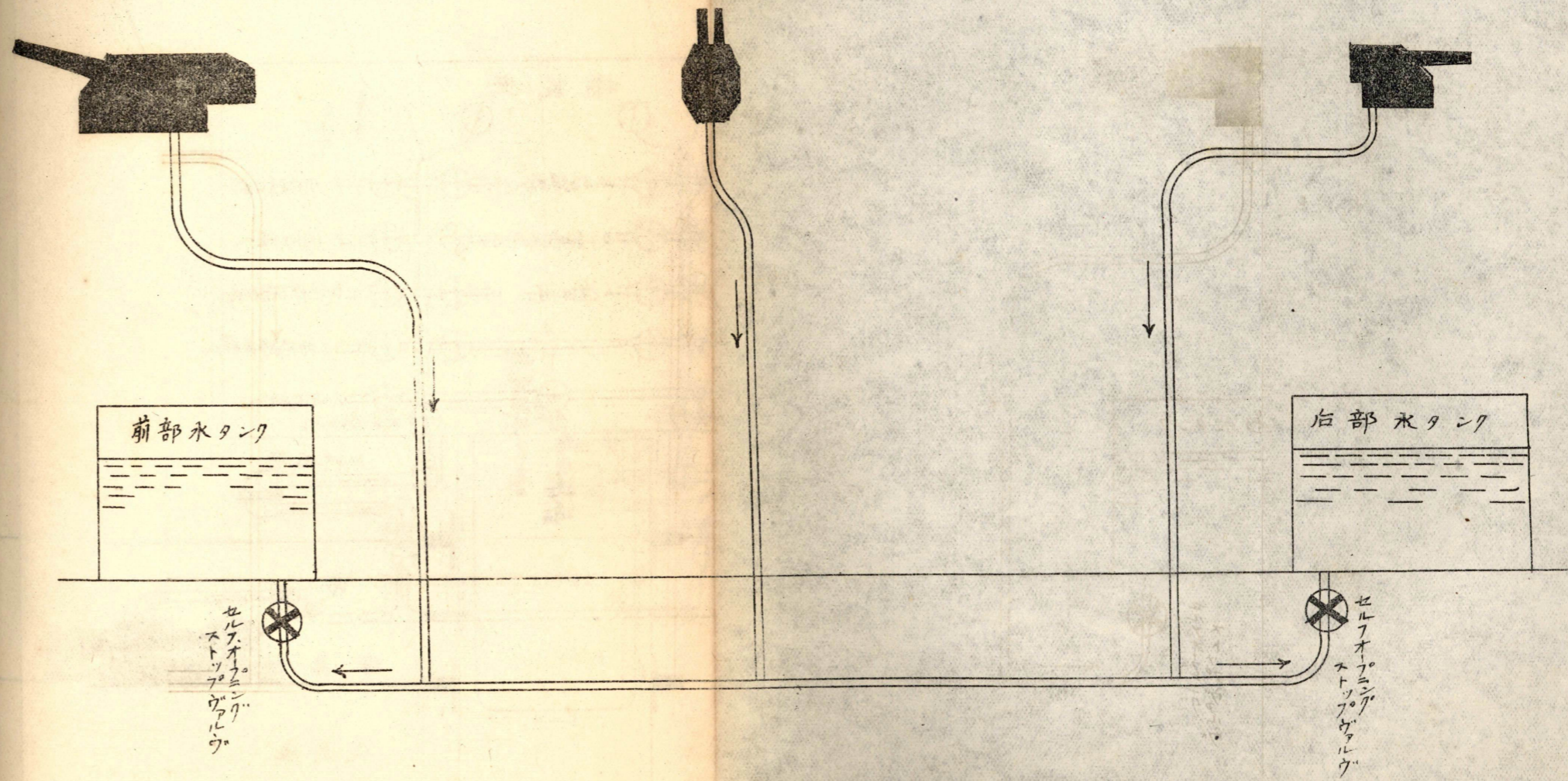
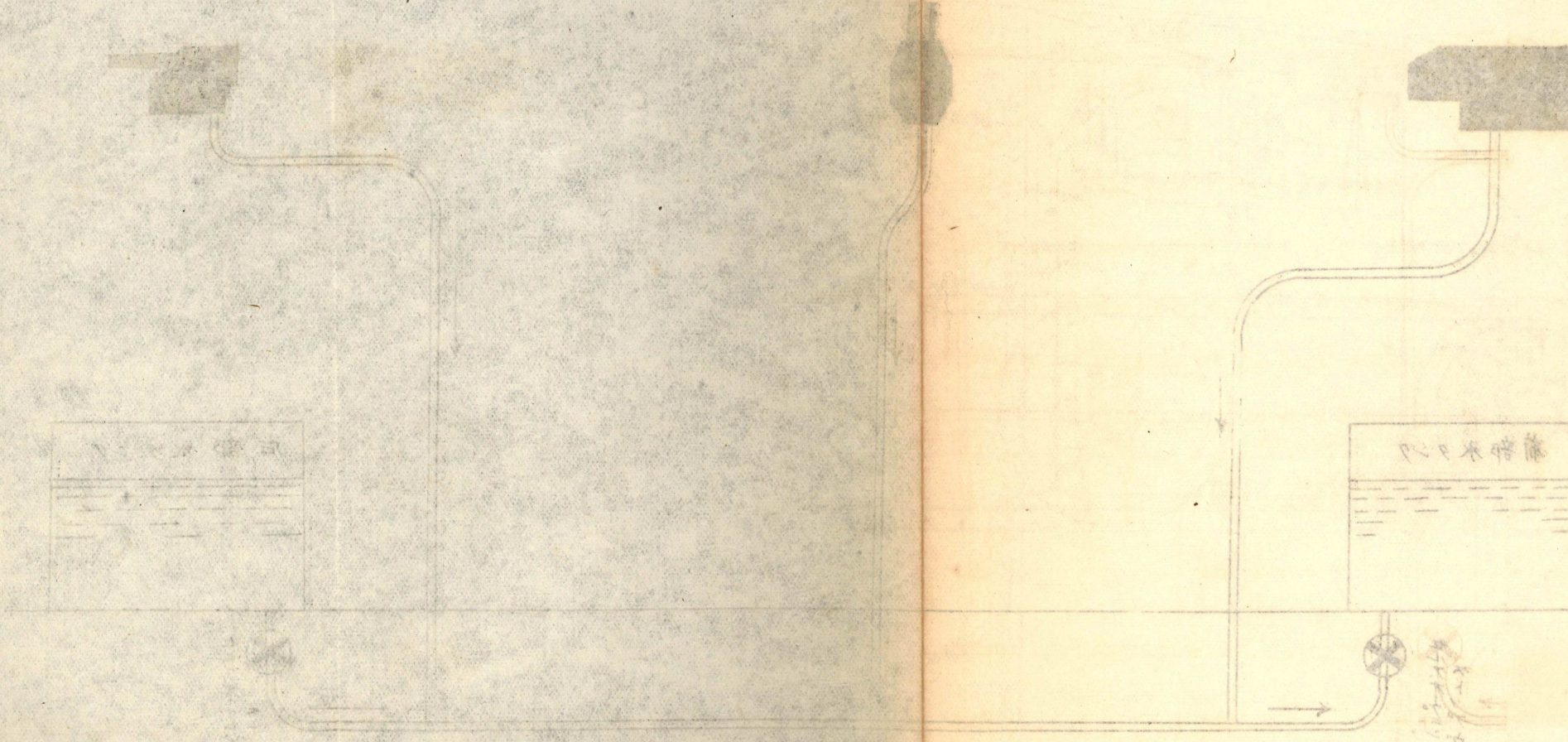


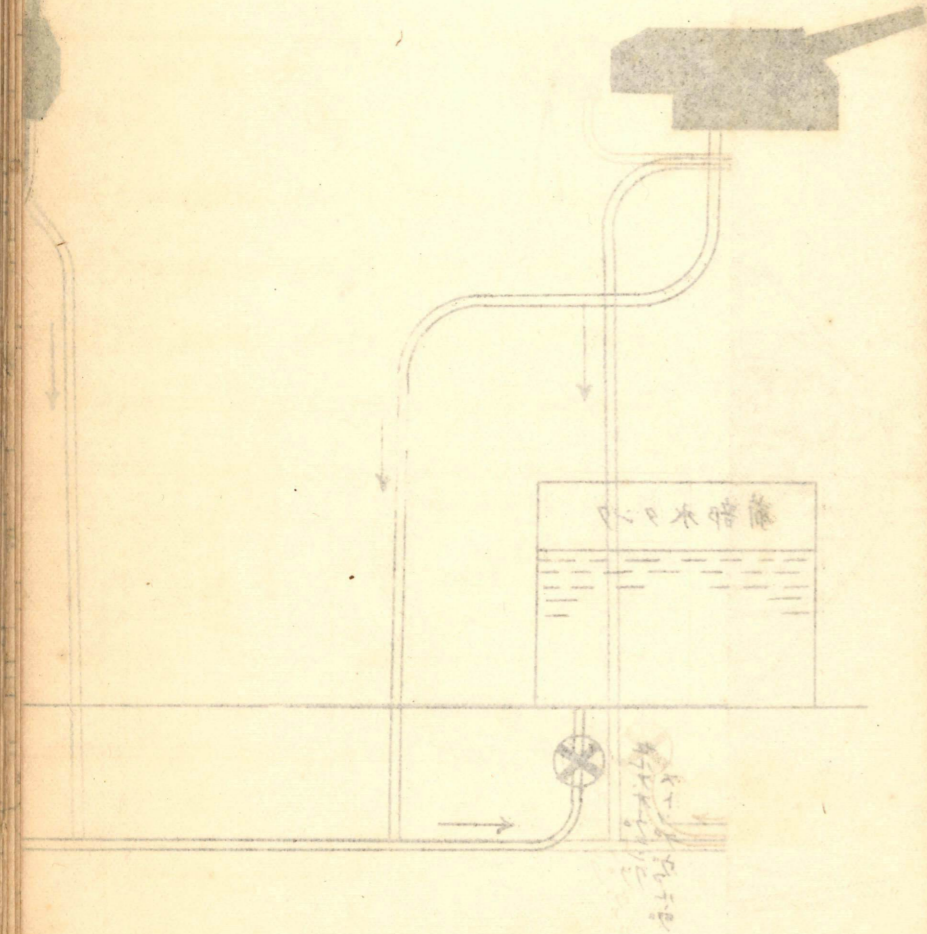
圖 2 藥

水 井 主 管

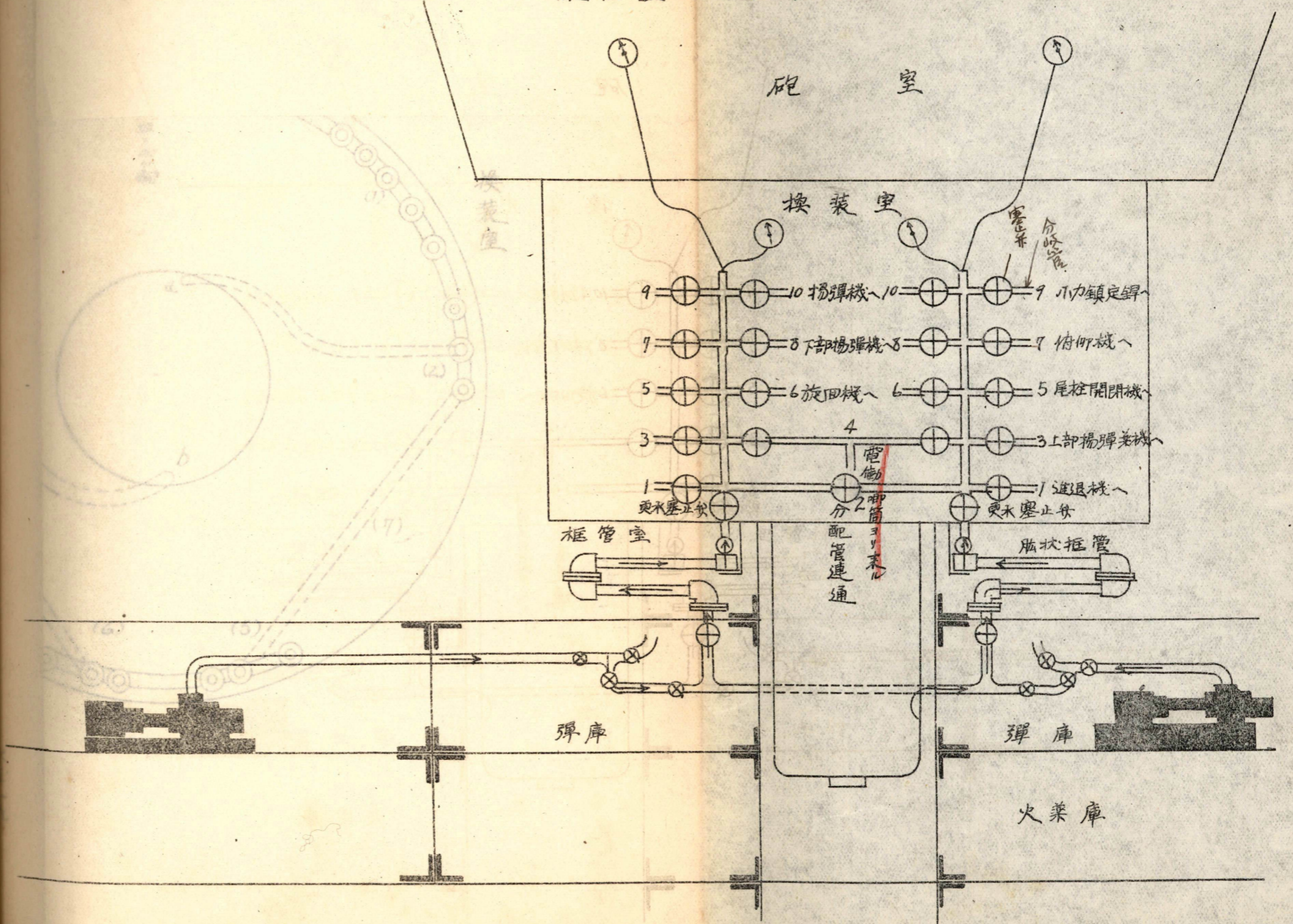


水 井

水 井



第 6 圖，一  
旋回盤內水压管裝置，一例圖解



6

1

旋回機

(5)

連管部

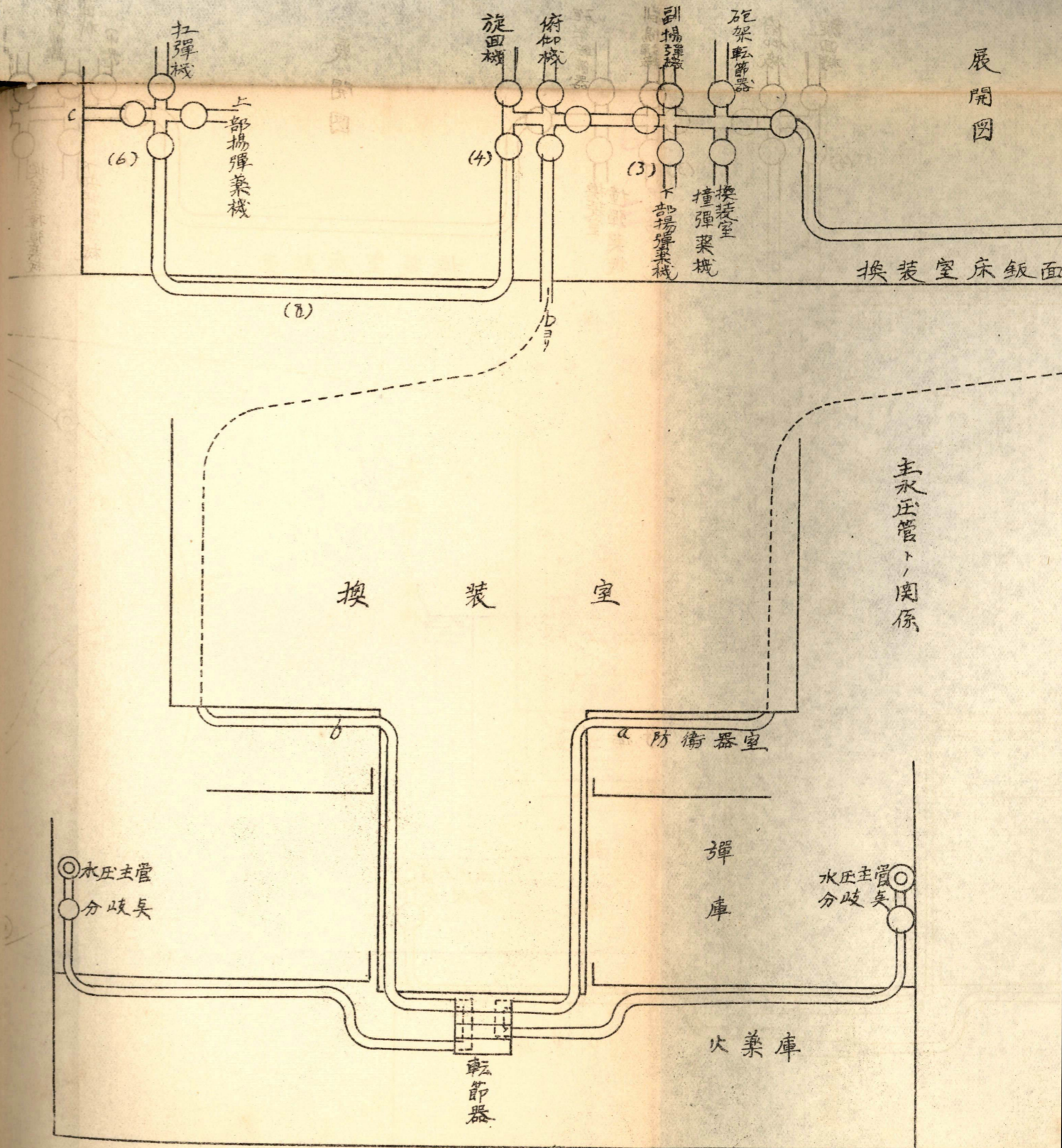
換裝室

第6圖

旋回盤內圈狀

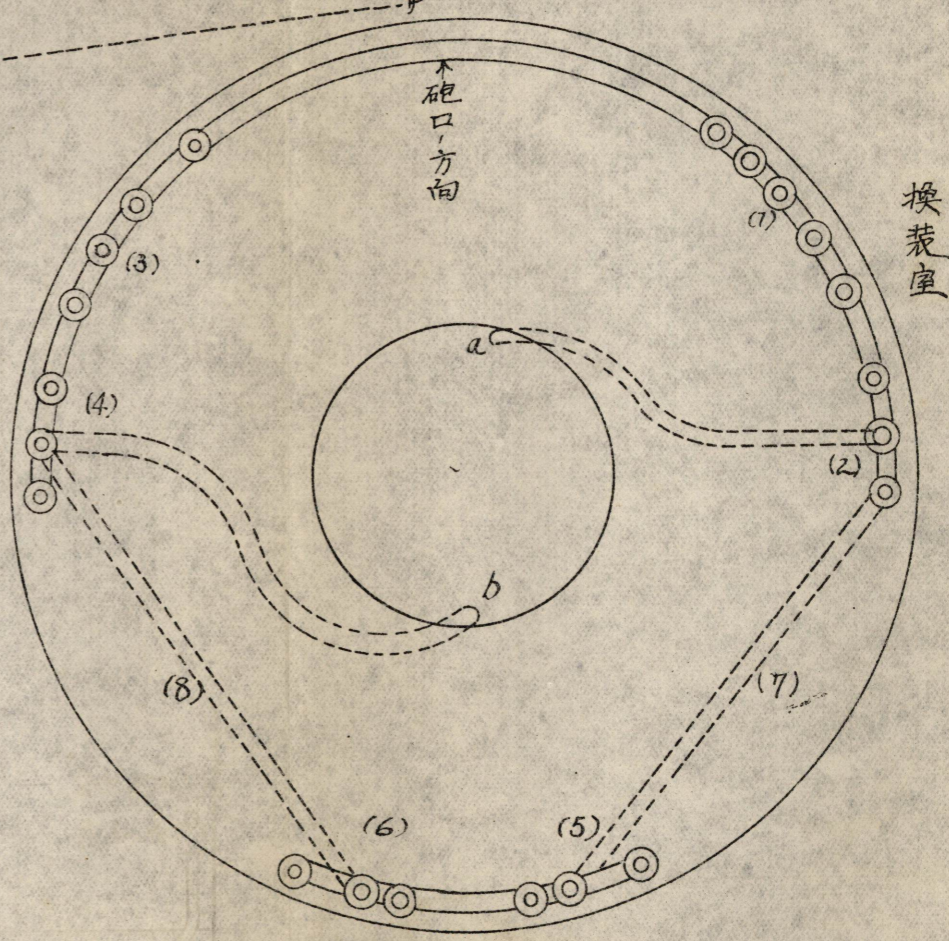
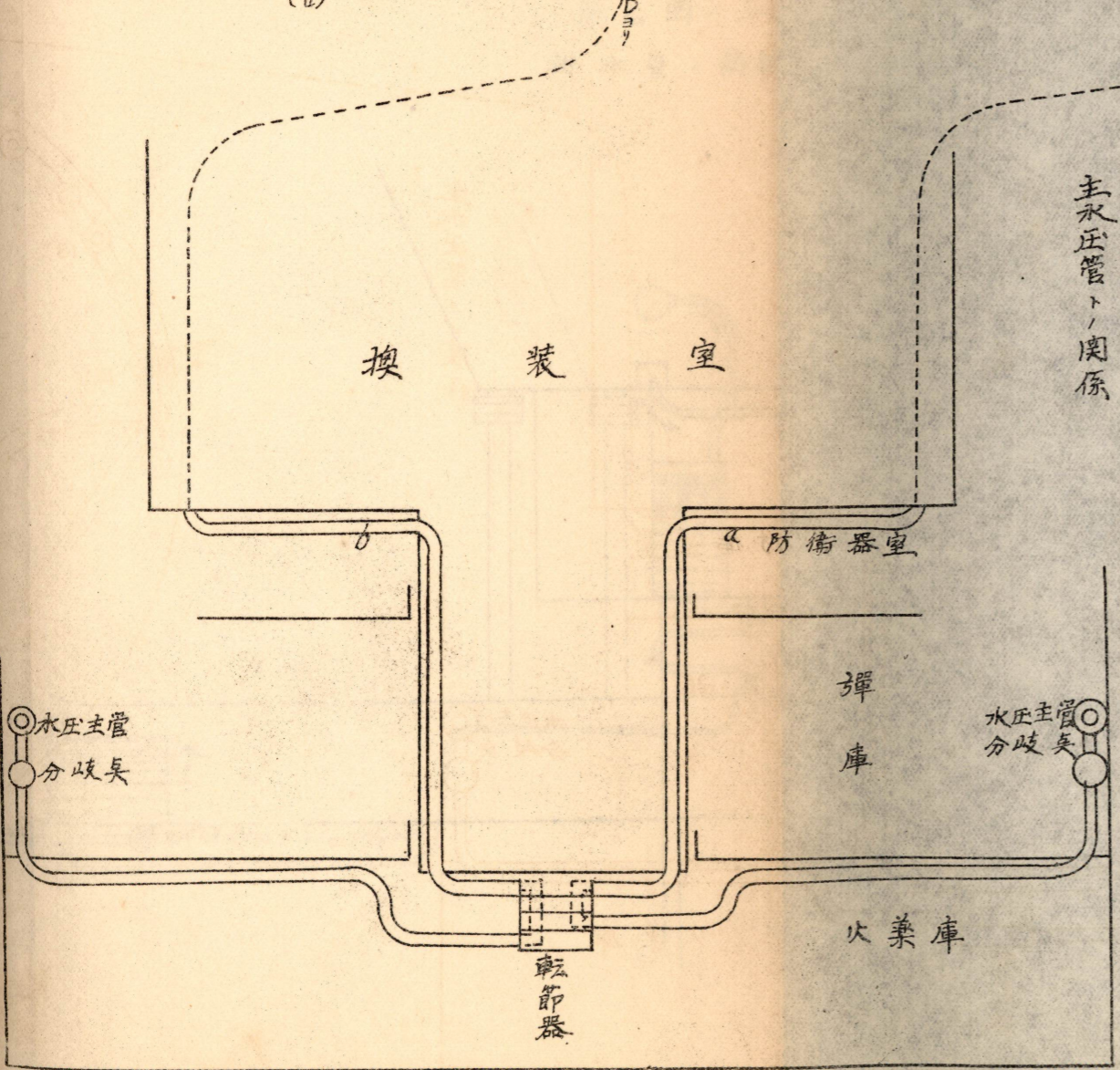
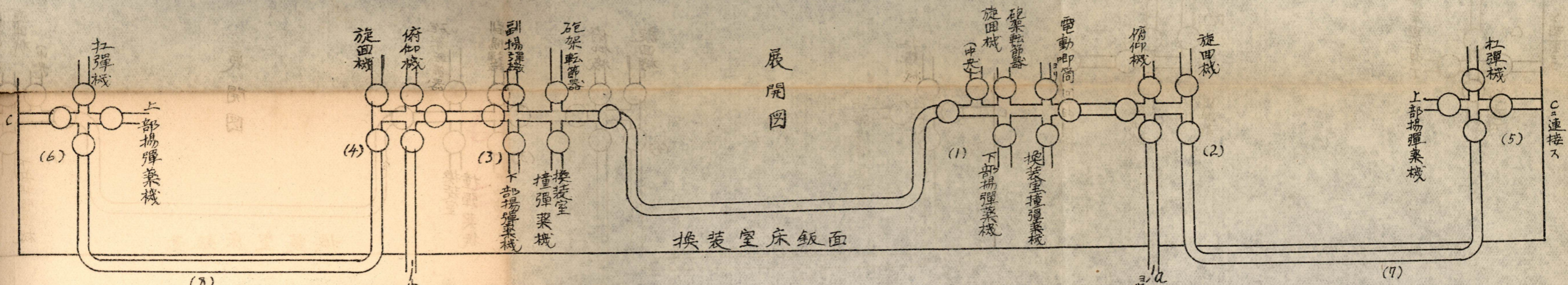
展開圖

換裝室床板面



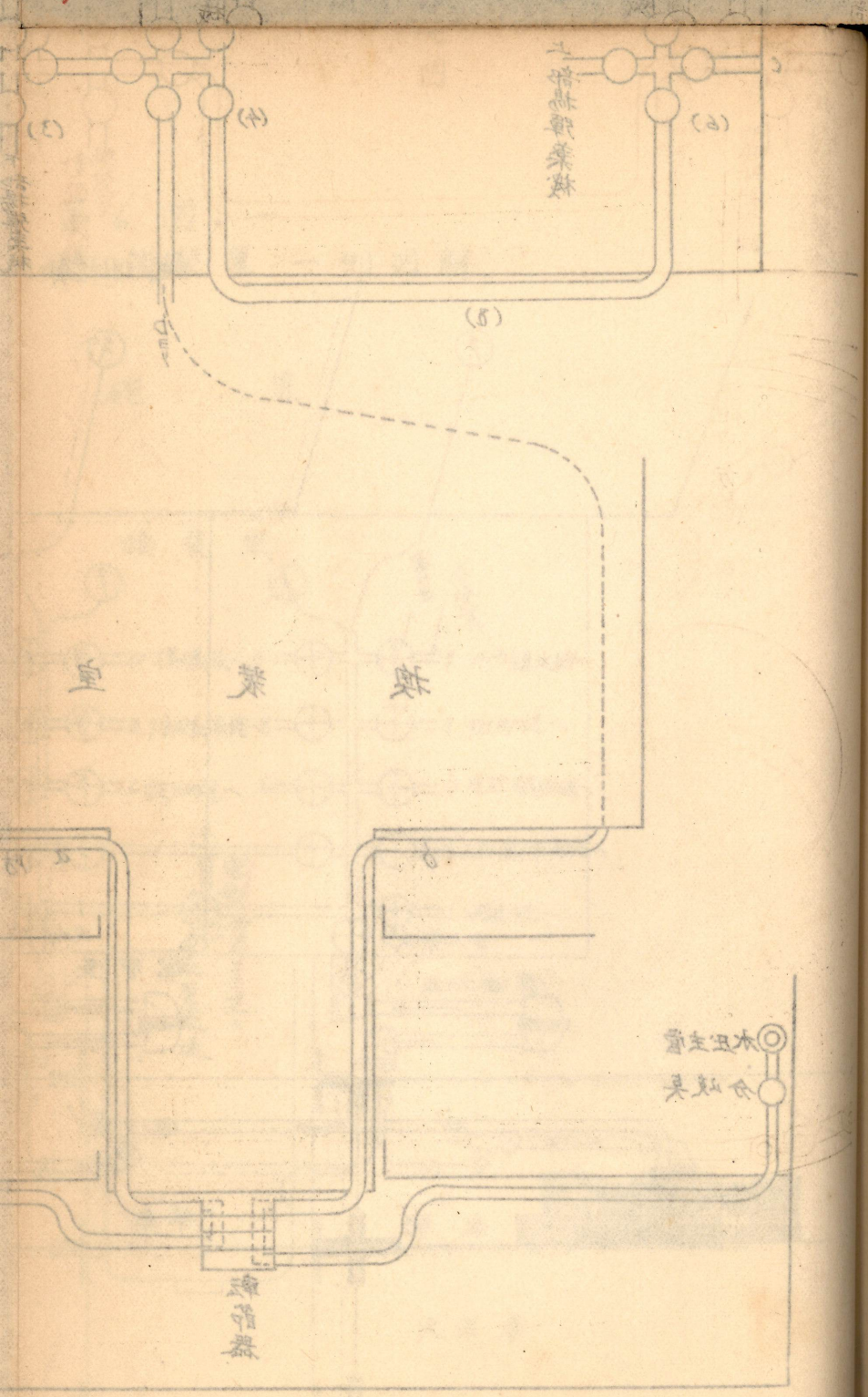
第b图,二

旋回盤内圈状分配管之一例

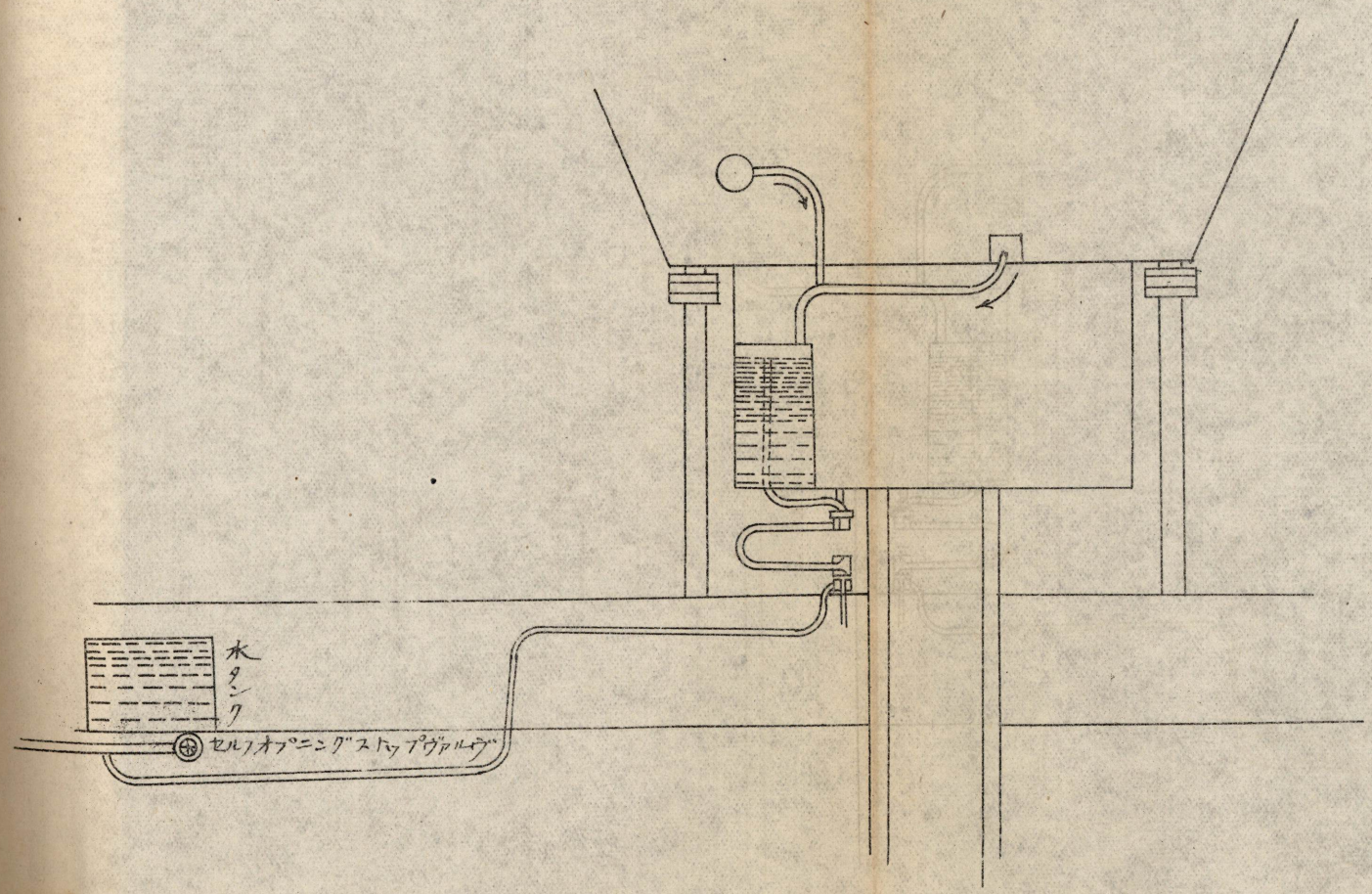




二  
一  
九

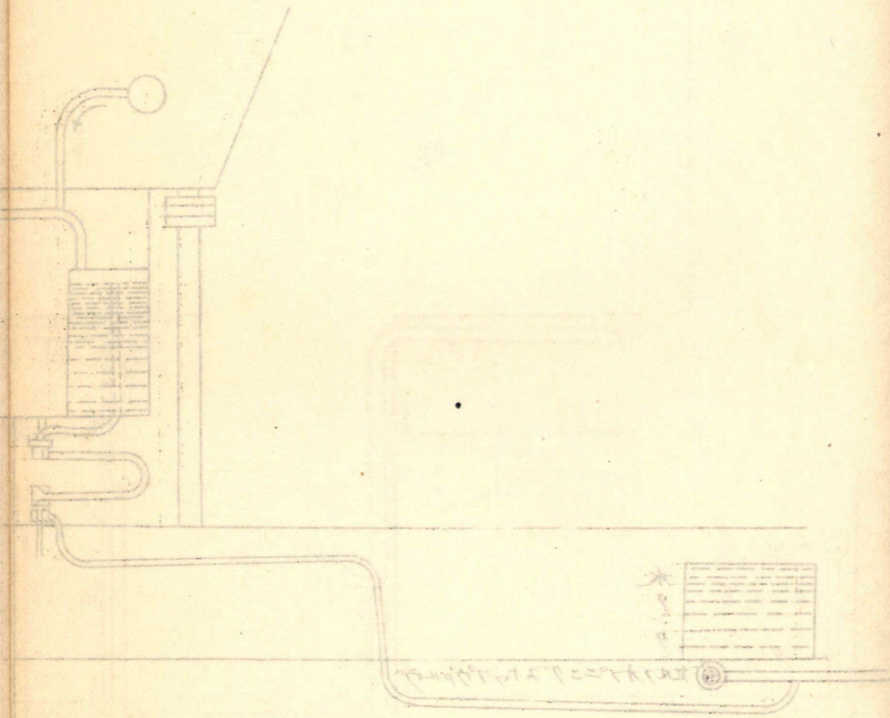


第6図, 三  
排水管, 図解

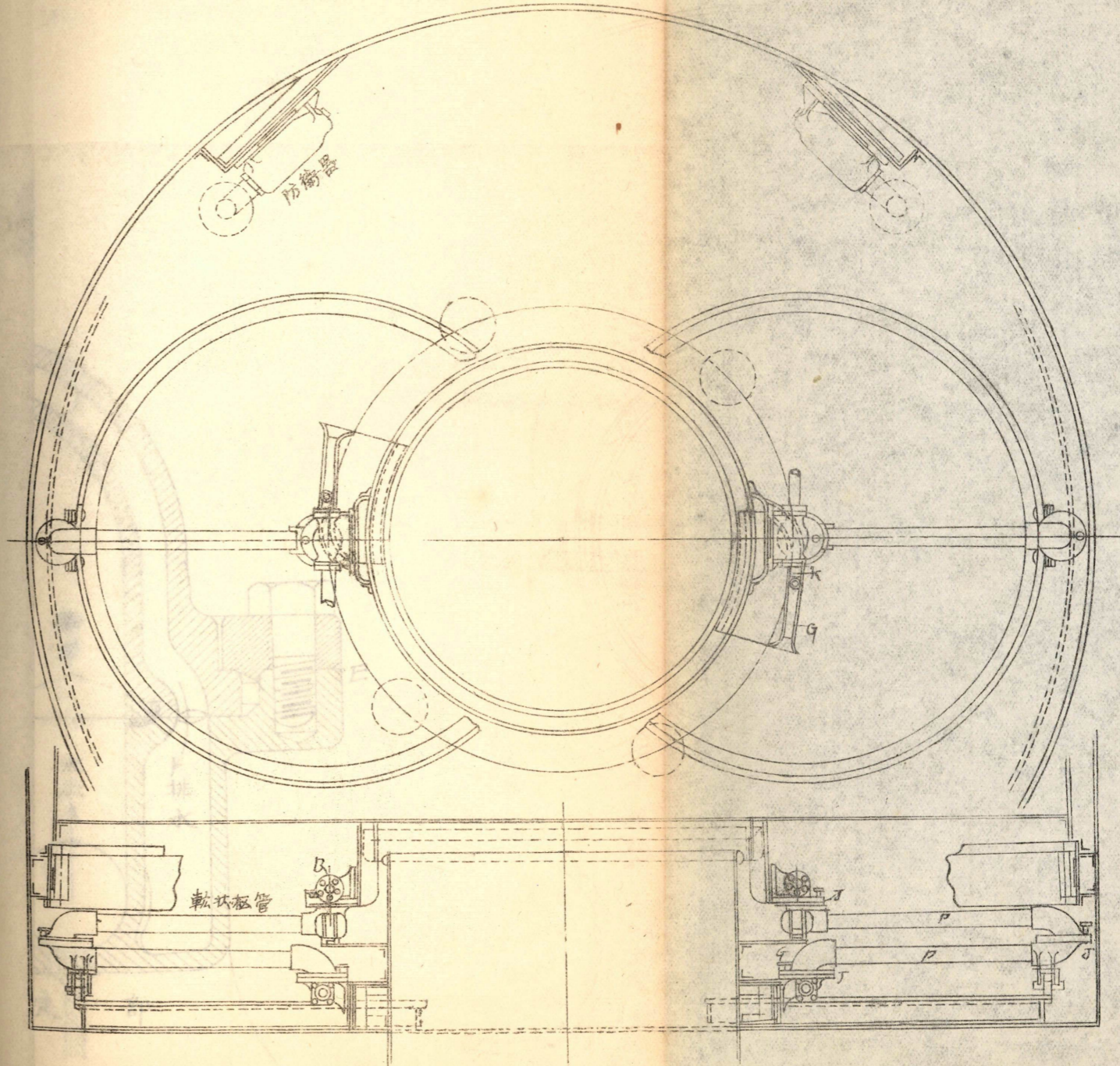


6  
1  
三

三、圖已詳  
四、圖已詳



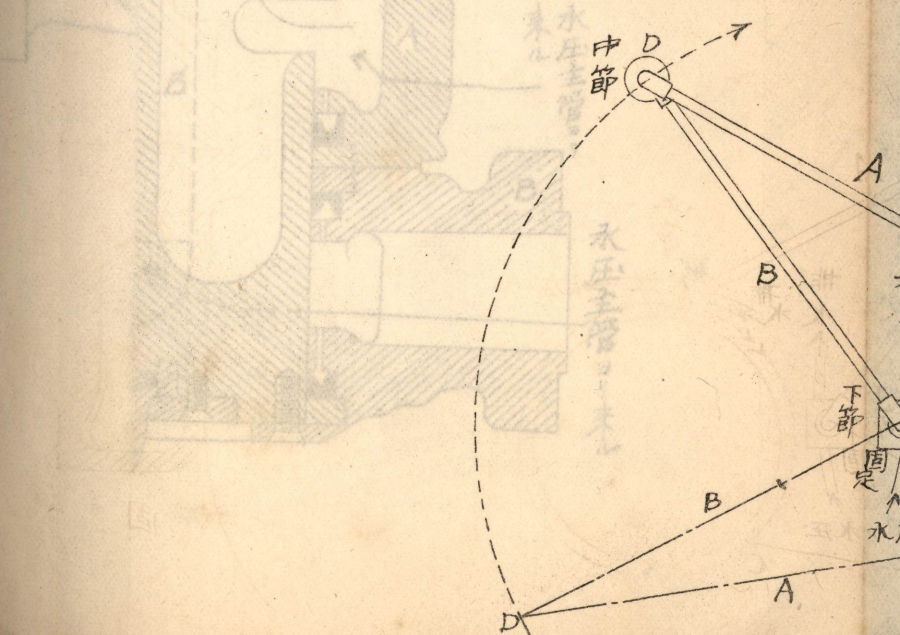
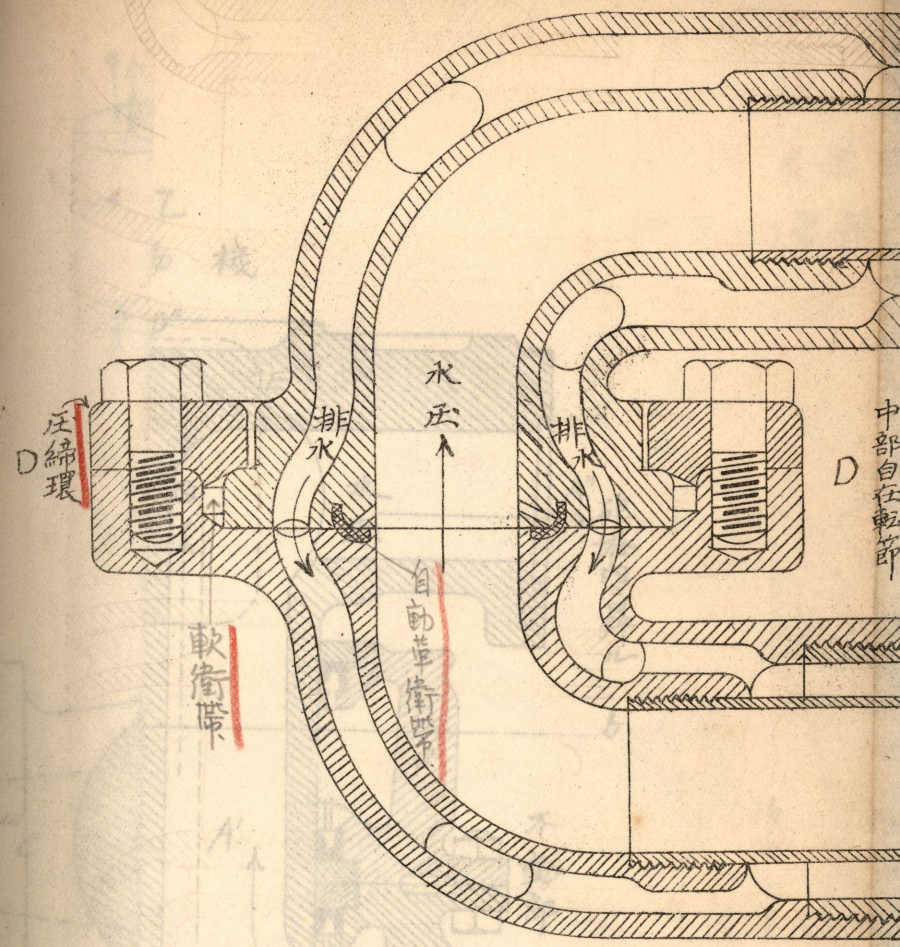
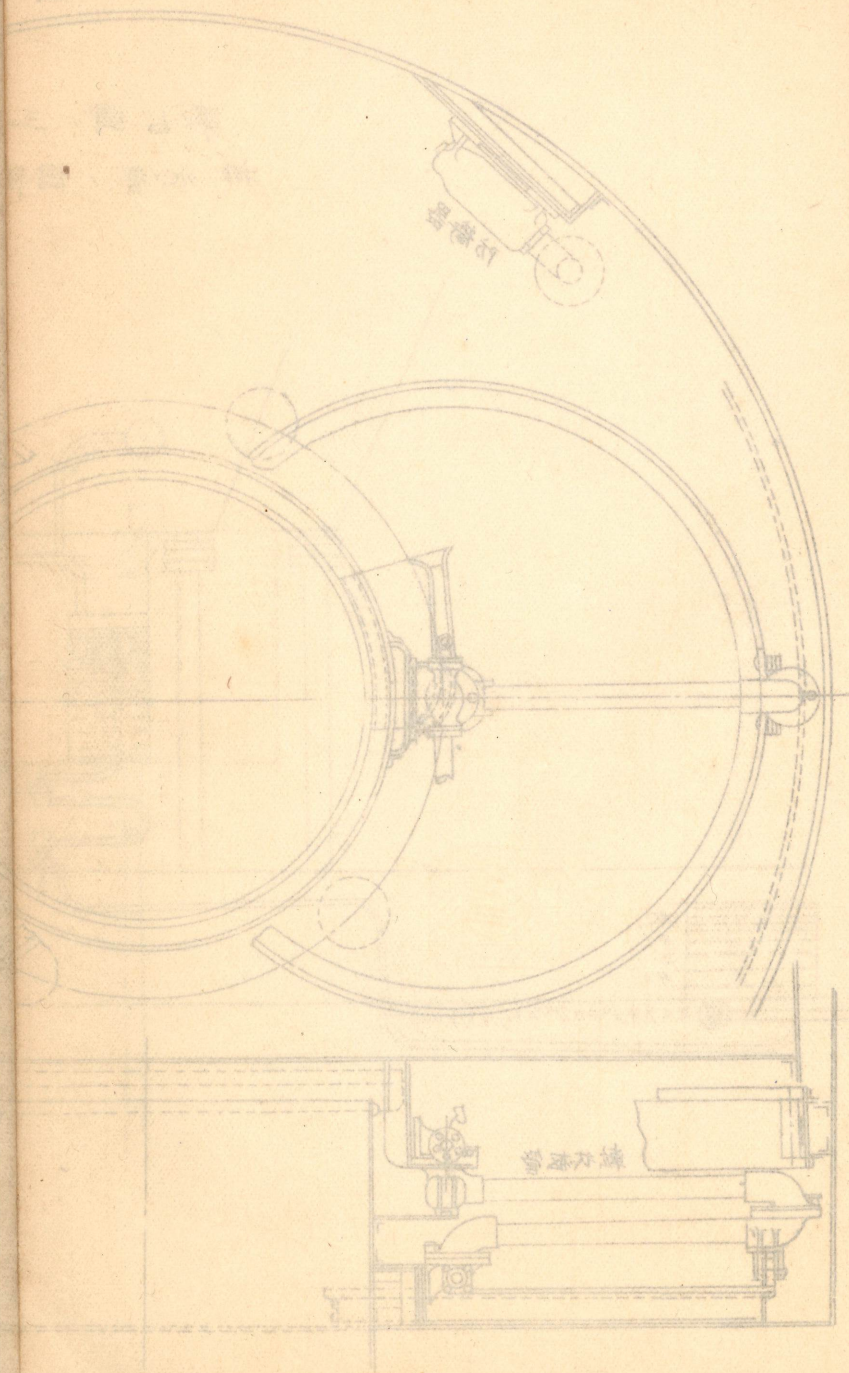
第 7 圖，一  
轉 節 水 压 管



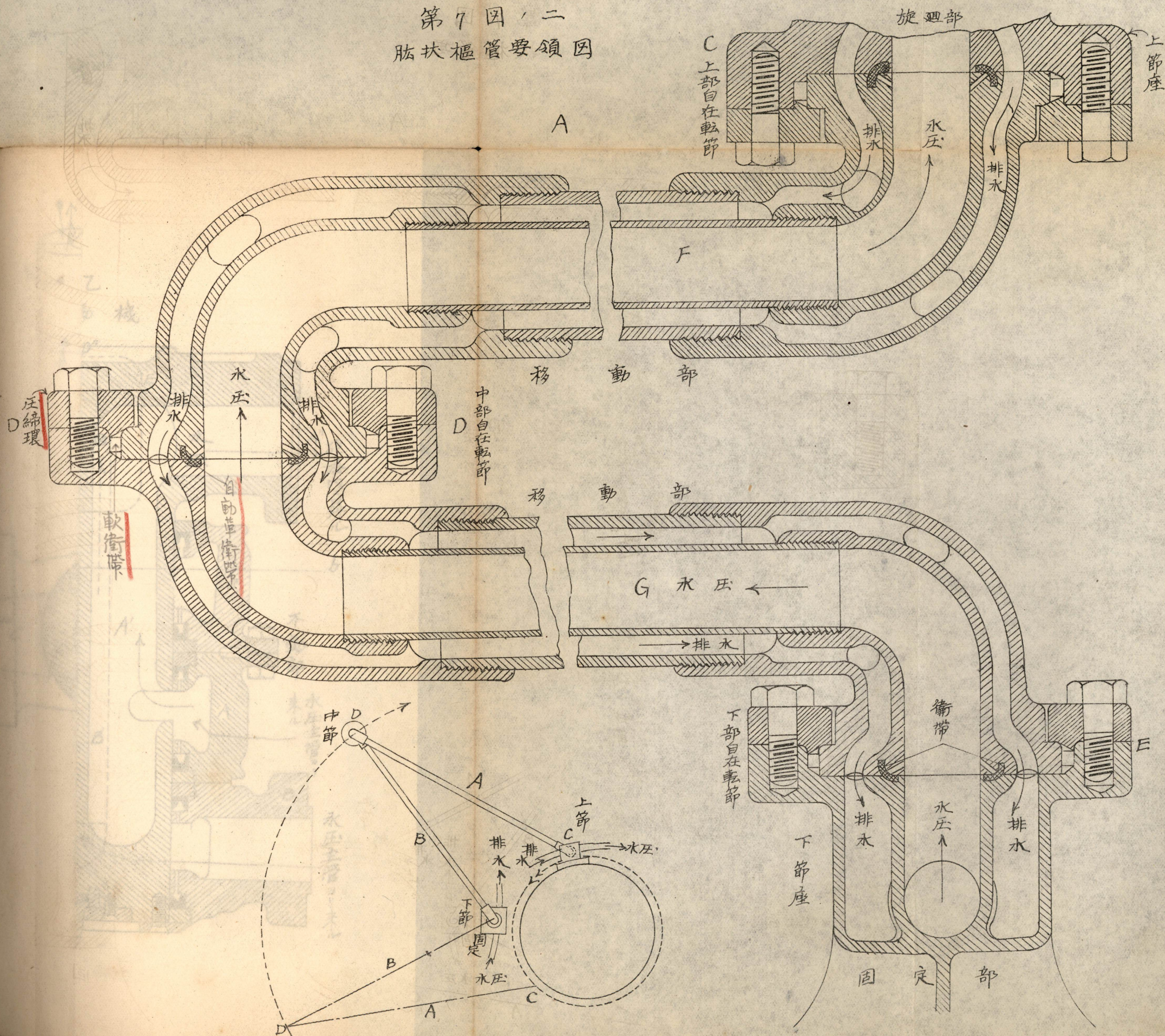
水 压 二 一

7  
1

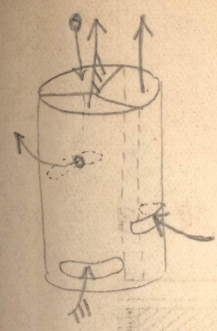
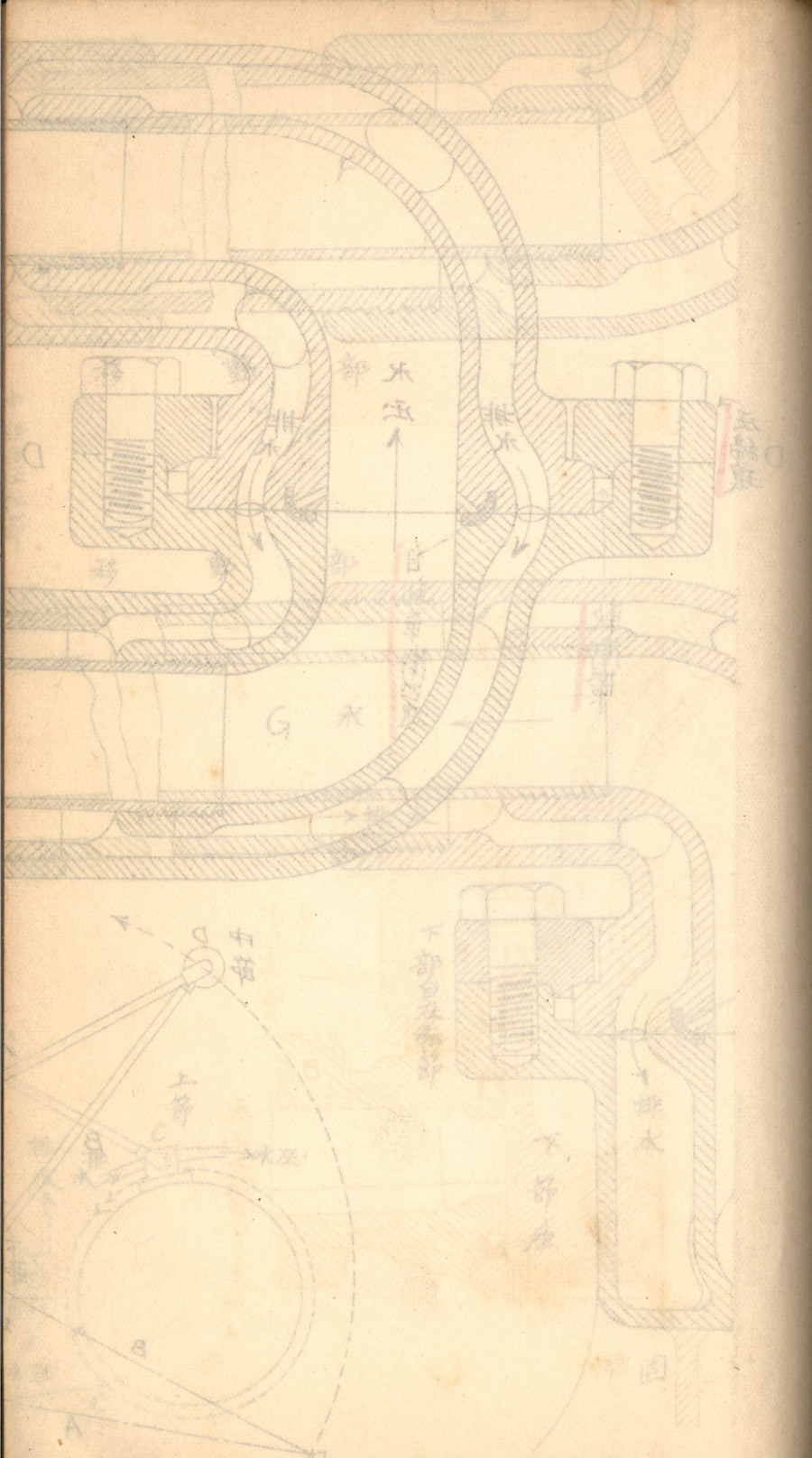
一、圖 丁 某  
管 五 木 指 輪



第7圖 二  
 肱扶樞管要領圖



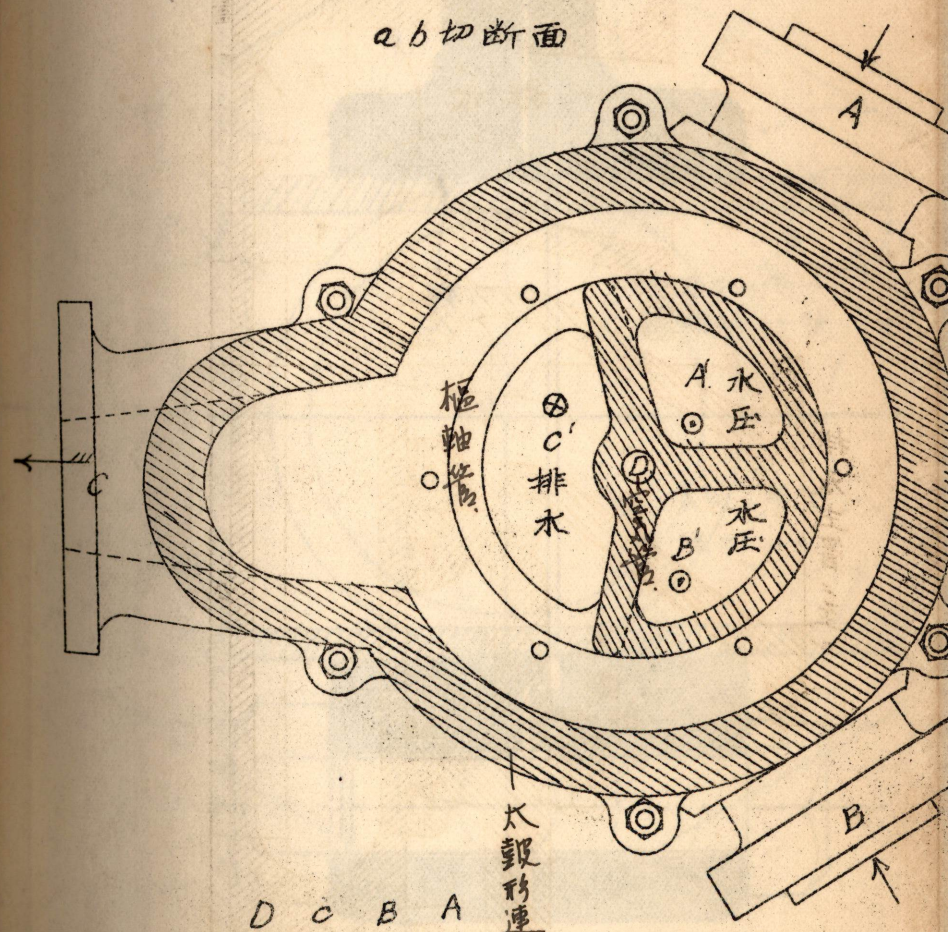
三  
一  
六



轉

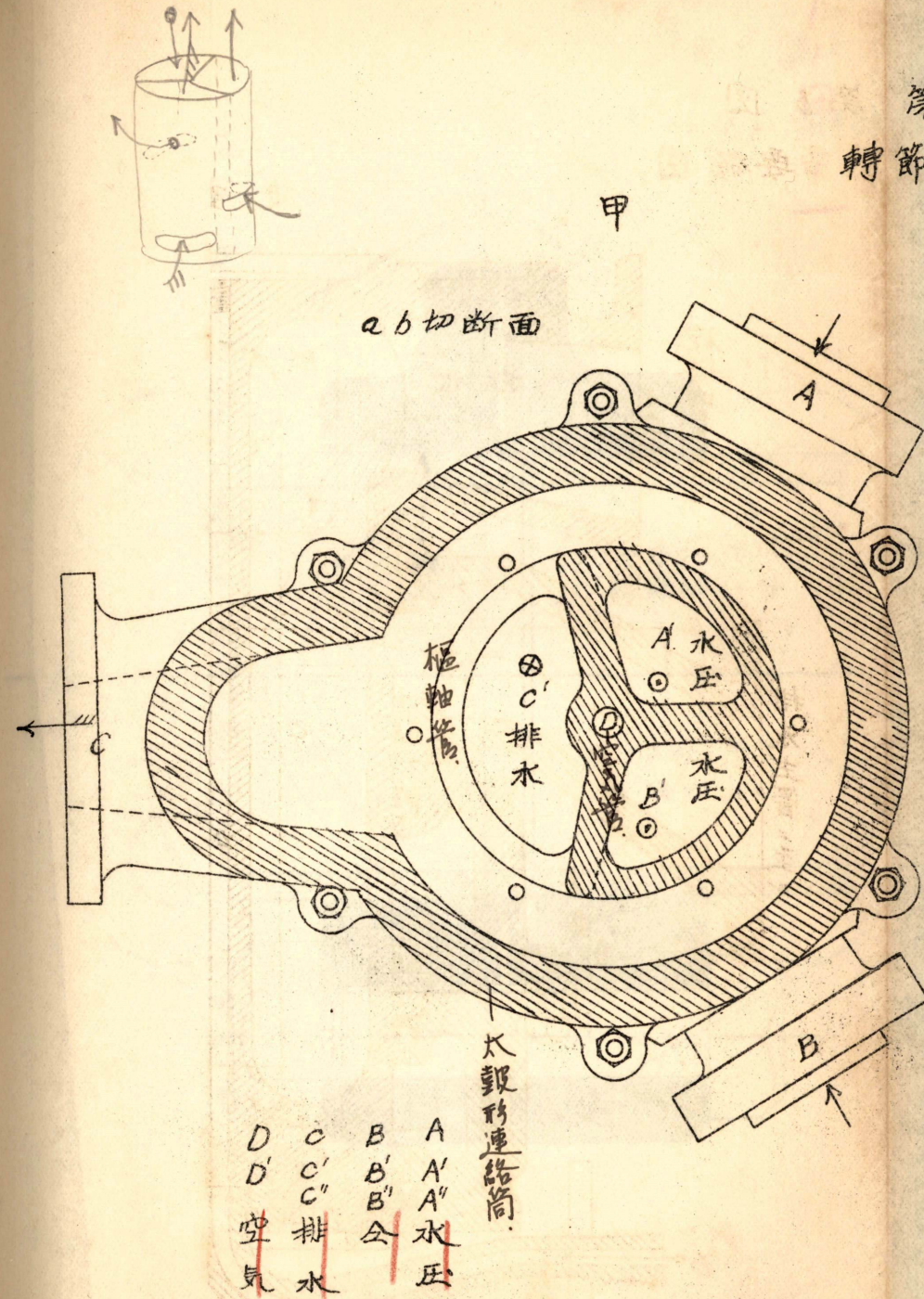
甲

ab 切断面



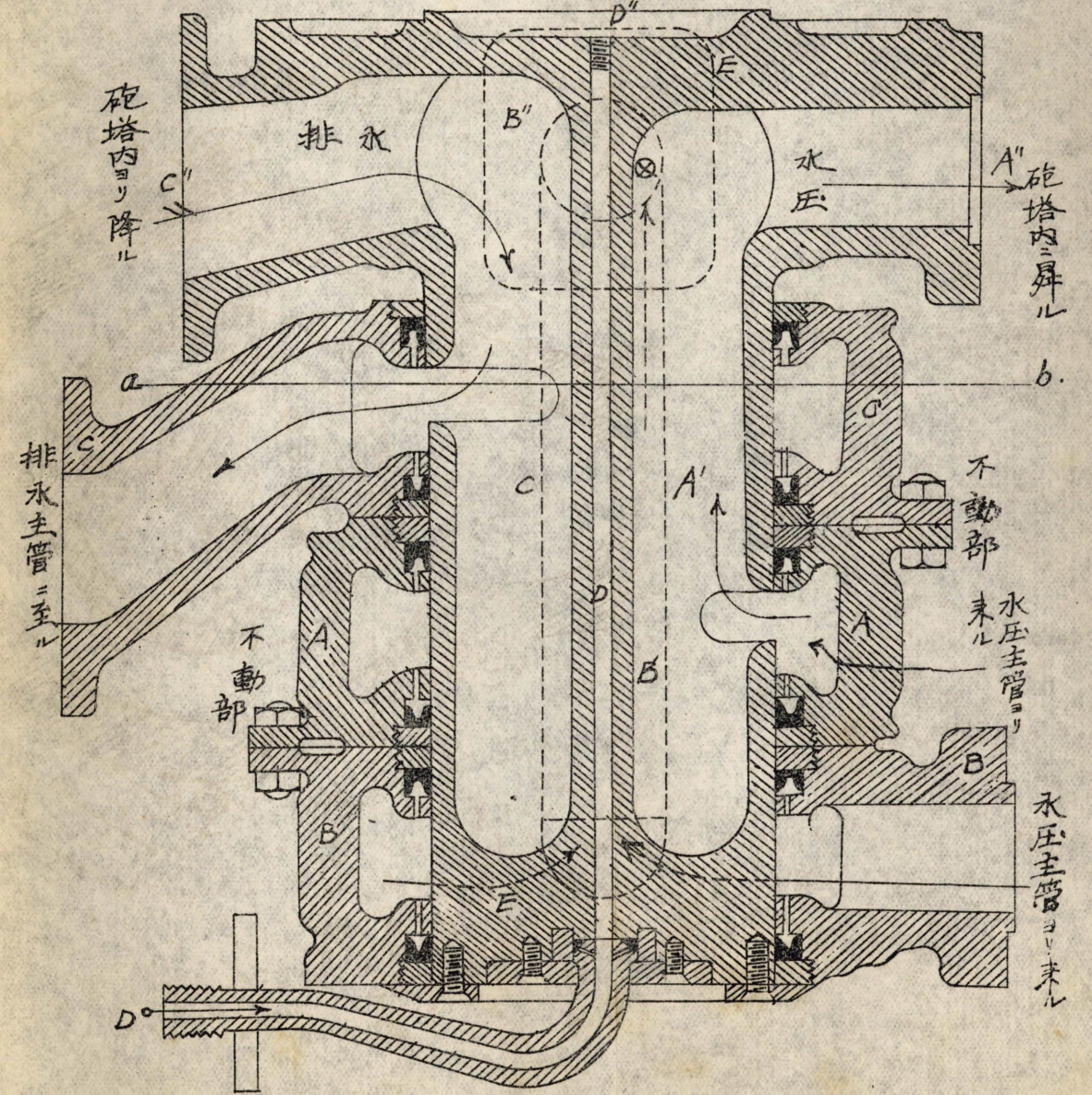
A A' 水压  
 B B' 空  
 C C' 排水  
 D D' 空气

第8図  
轉節器要領圖



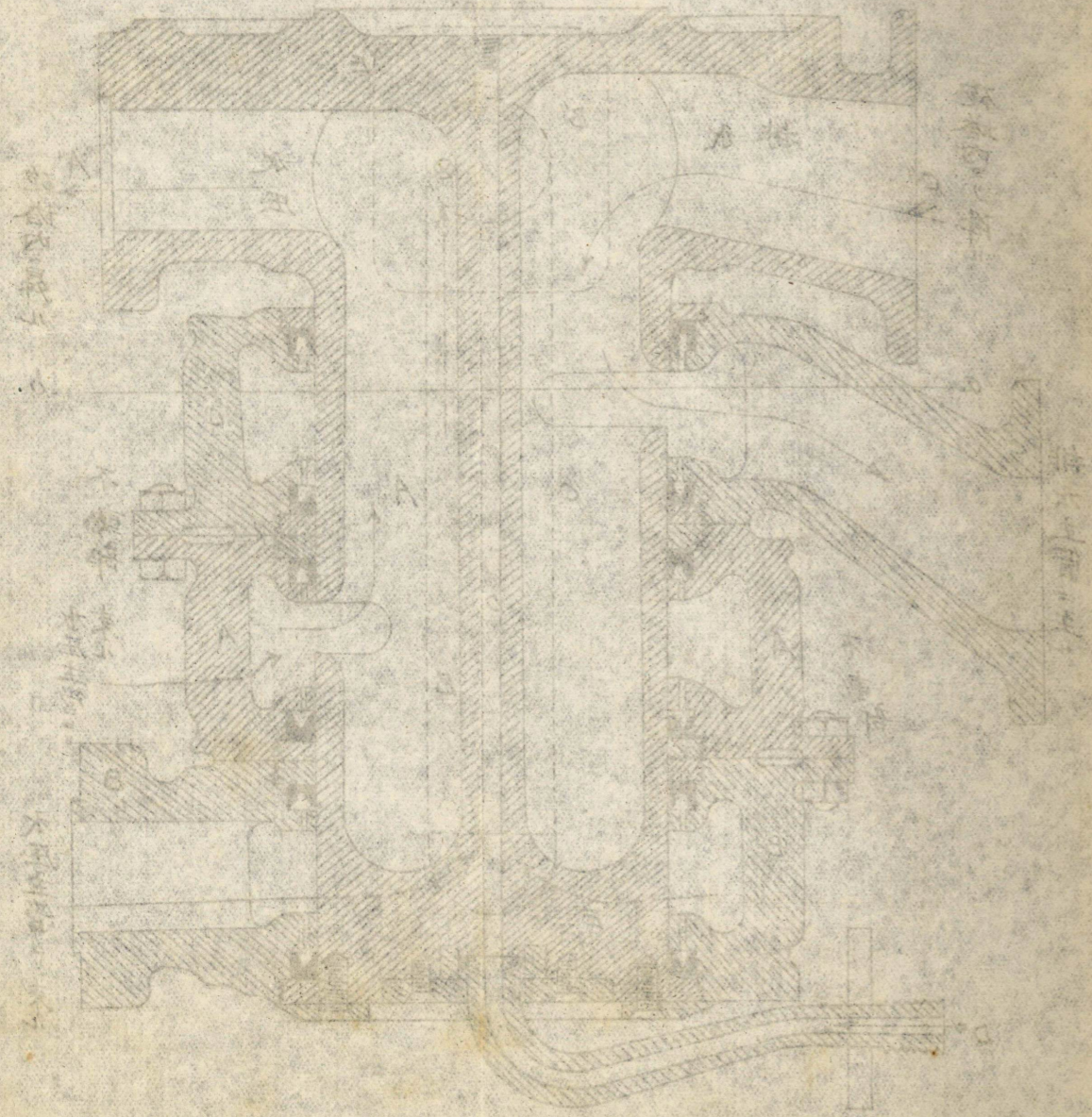
大鋼筒  
A A' 水压  
B B' 空  
C C' 排水  
D D' 空

乙  
旋動機



水压二三

圖 8 第  
大徑水管銲接



甲

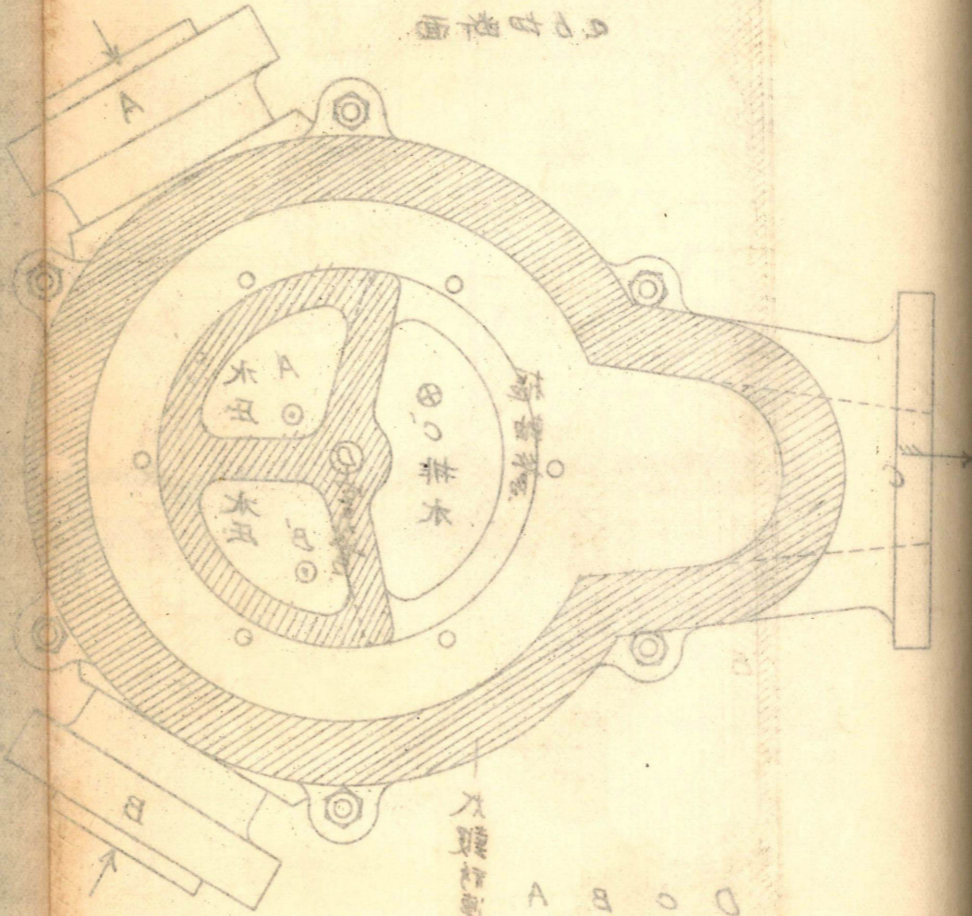
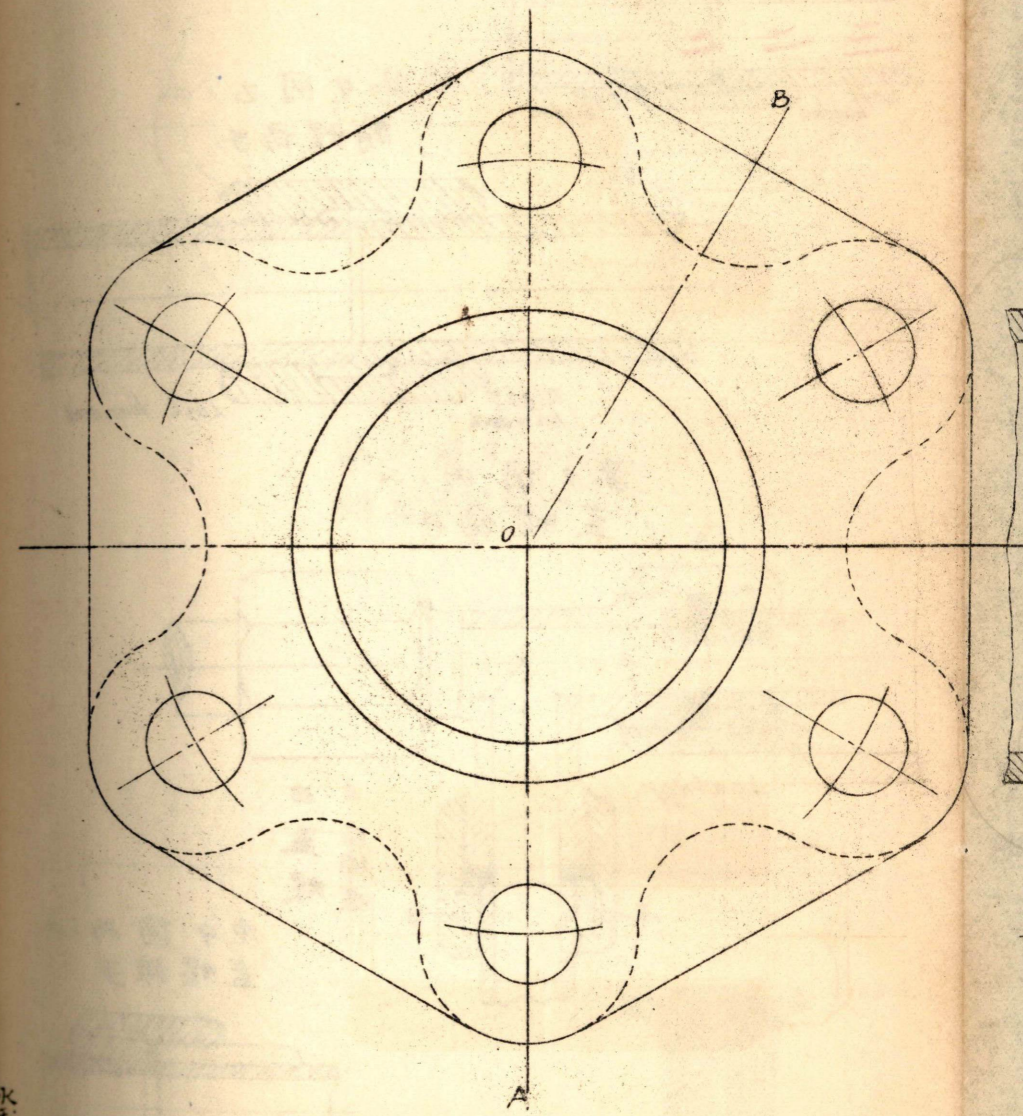


圖 8 第

大徑水管銲接

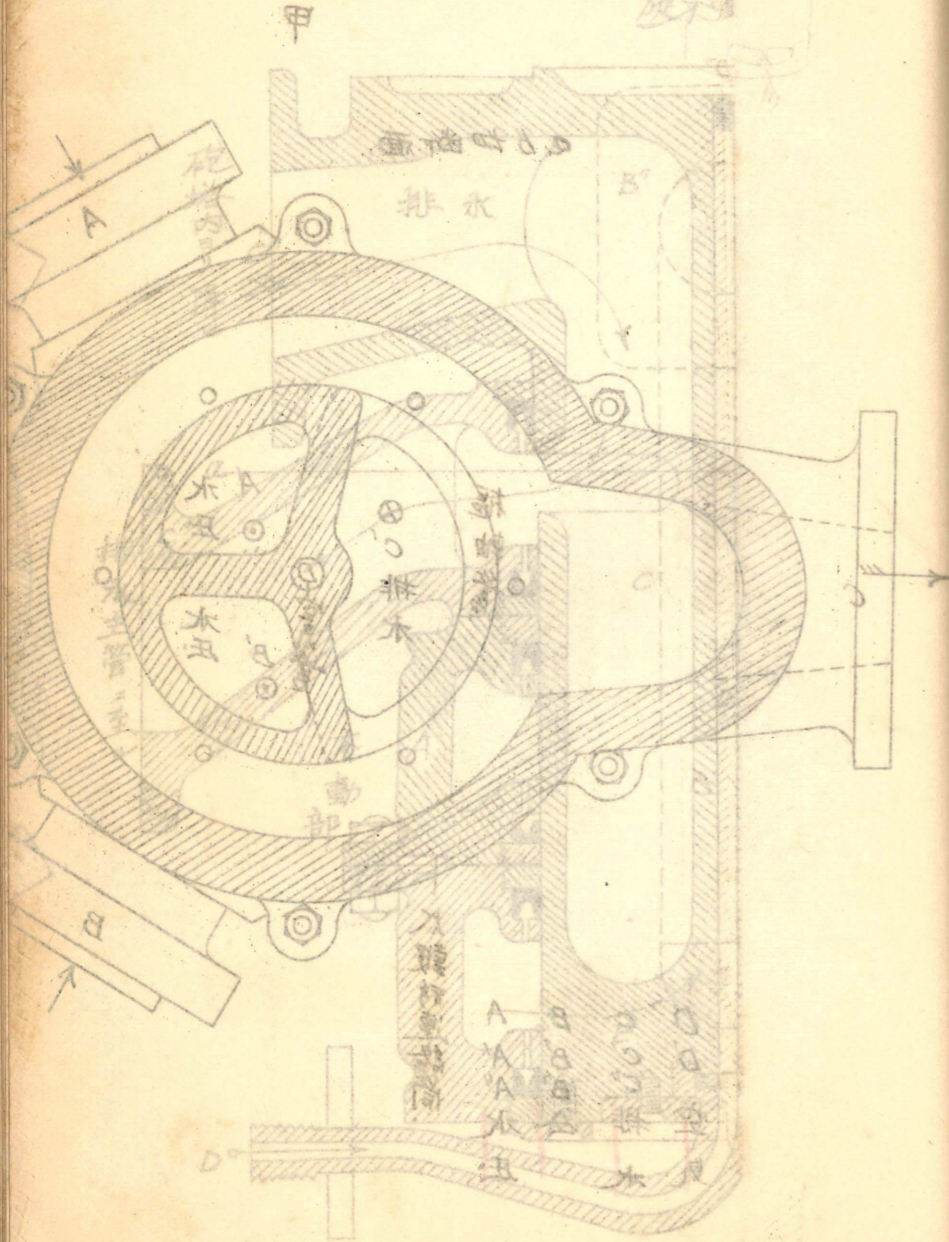
O O 魚尾  
 O O C 掛水  
 B B B 公  
 A A A 水 組

大徑水管銲接

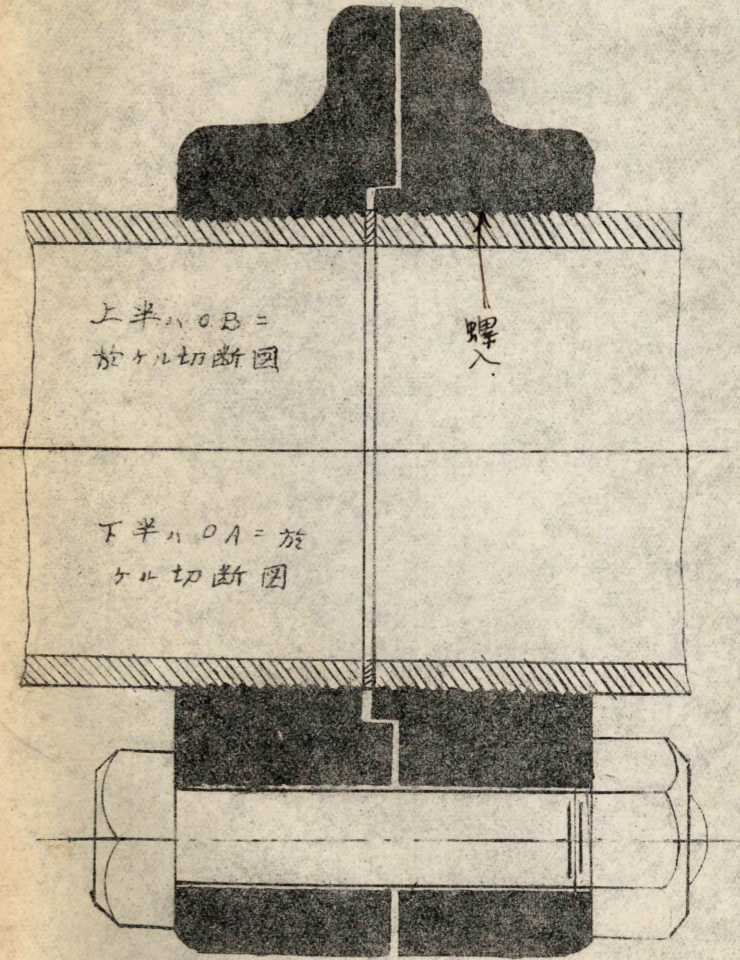
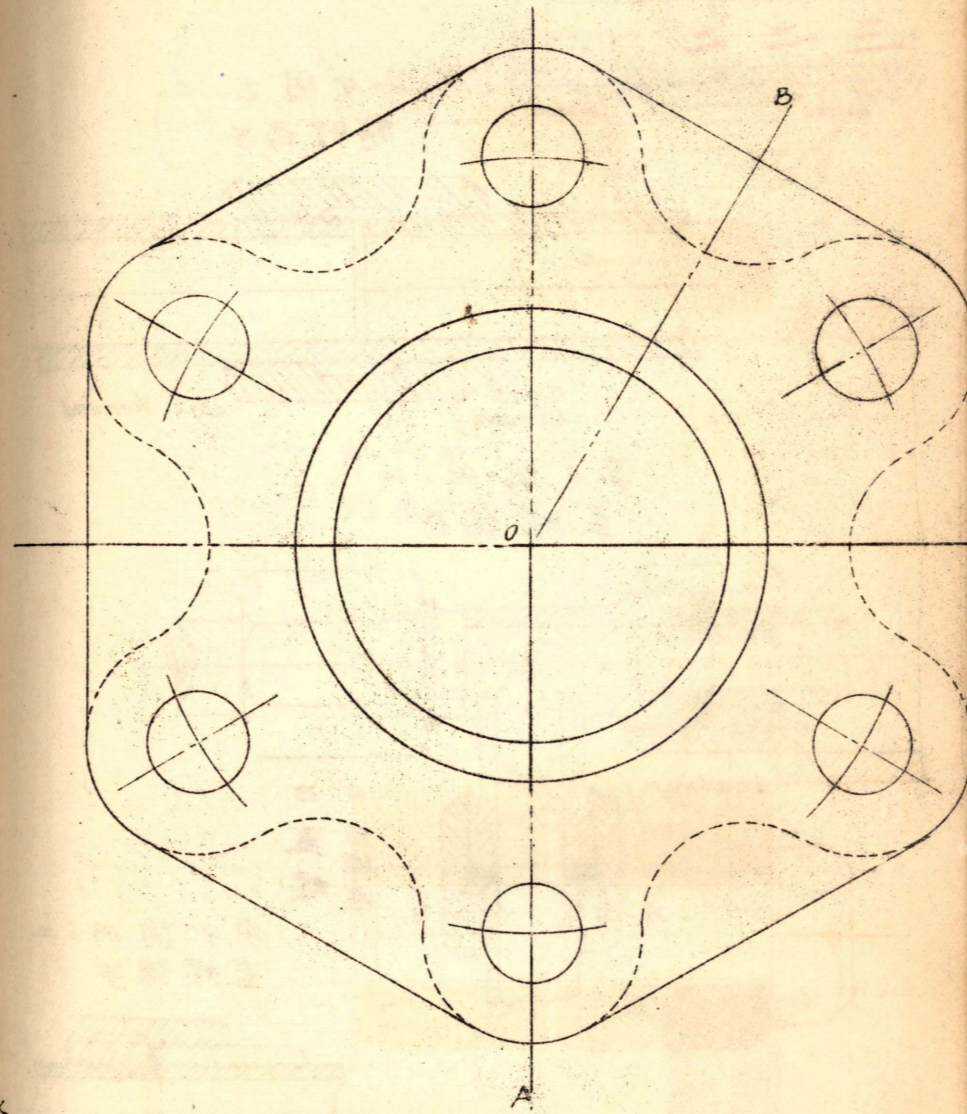


水 2 二

第8図  
重要部図



第9図甲  
大径水圧管銲接手



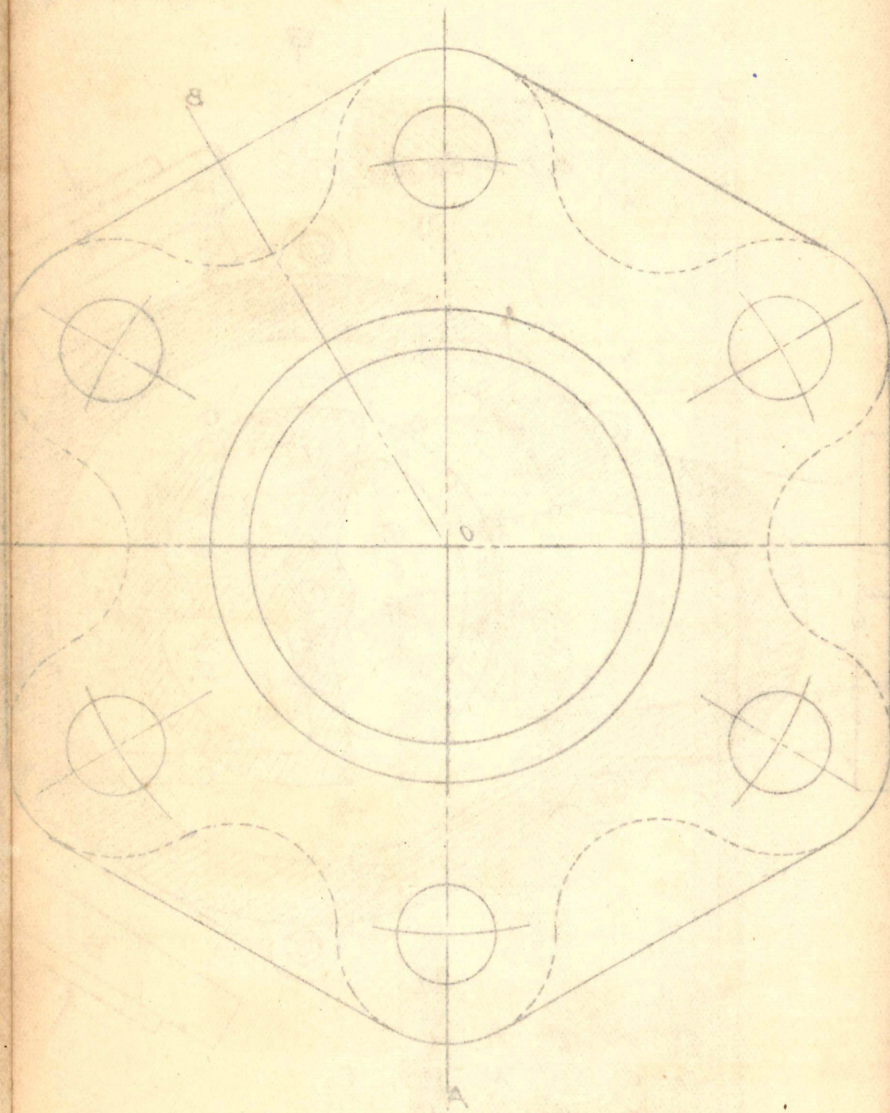
水圧



9  
甲  
一

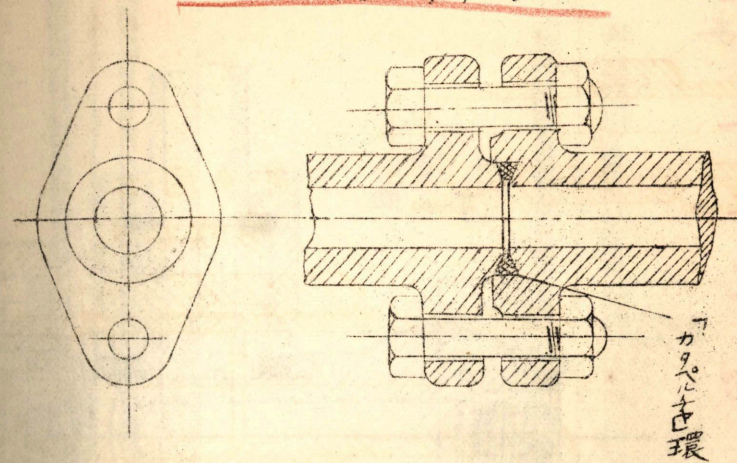
甲圖P第

大管木虫管睡

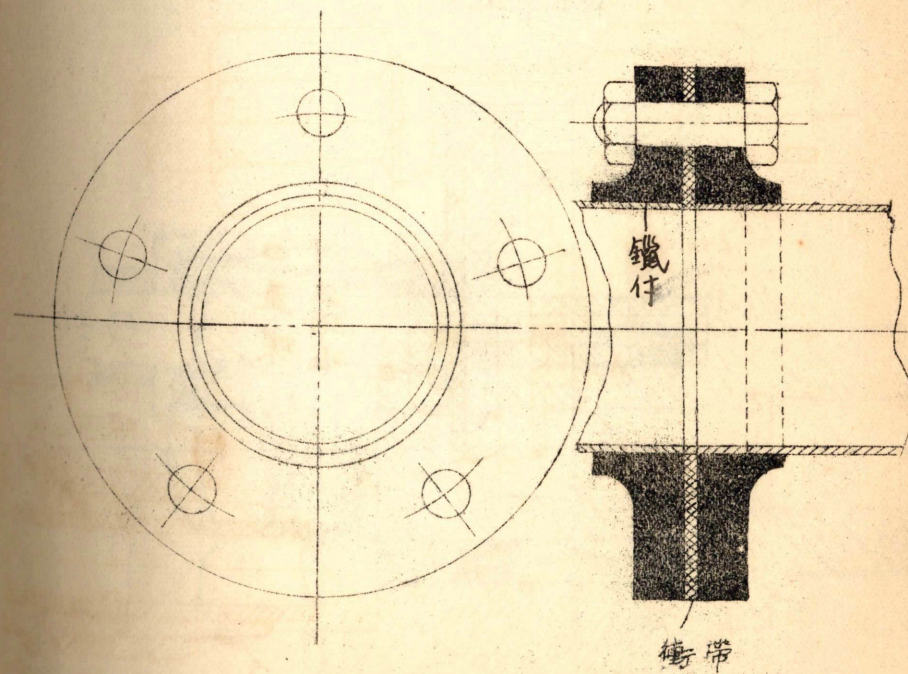


第9圖, 甲, 二

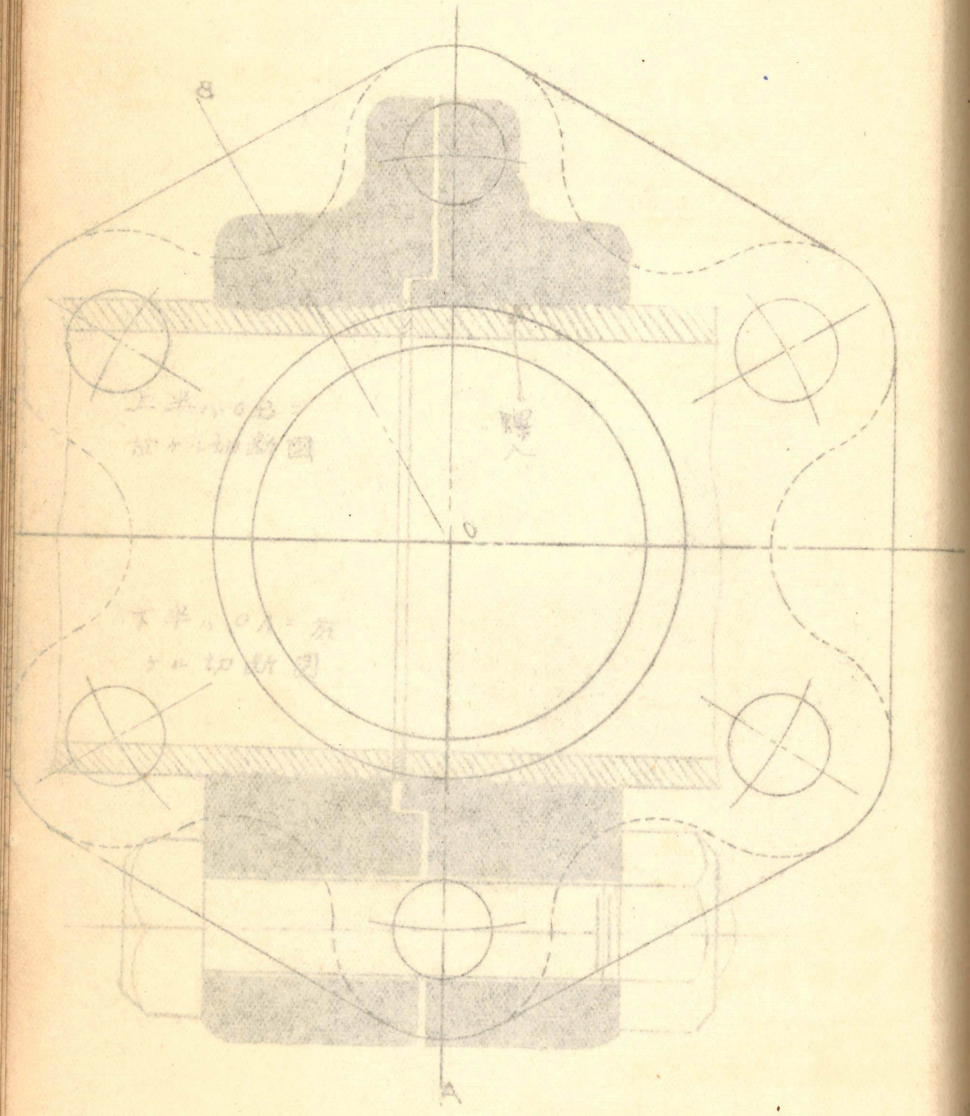
Double lugged pipe joint.



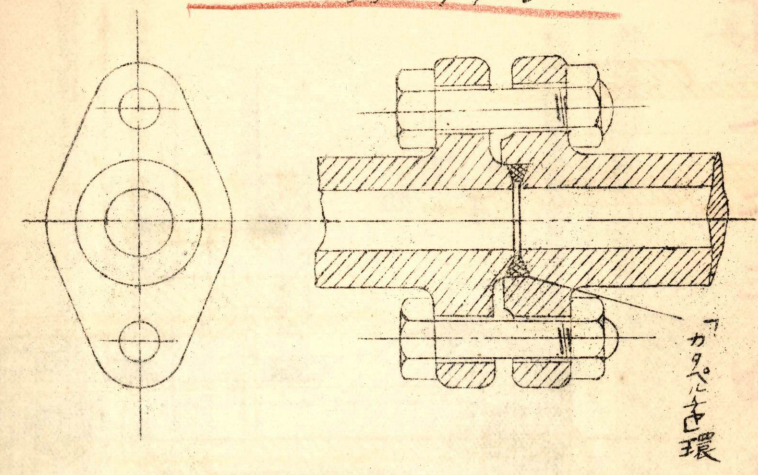
第9圖甲, 三  
雄水管鑄接手



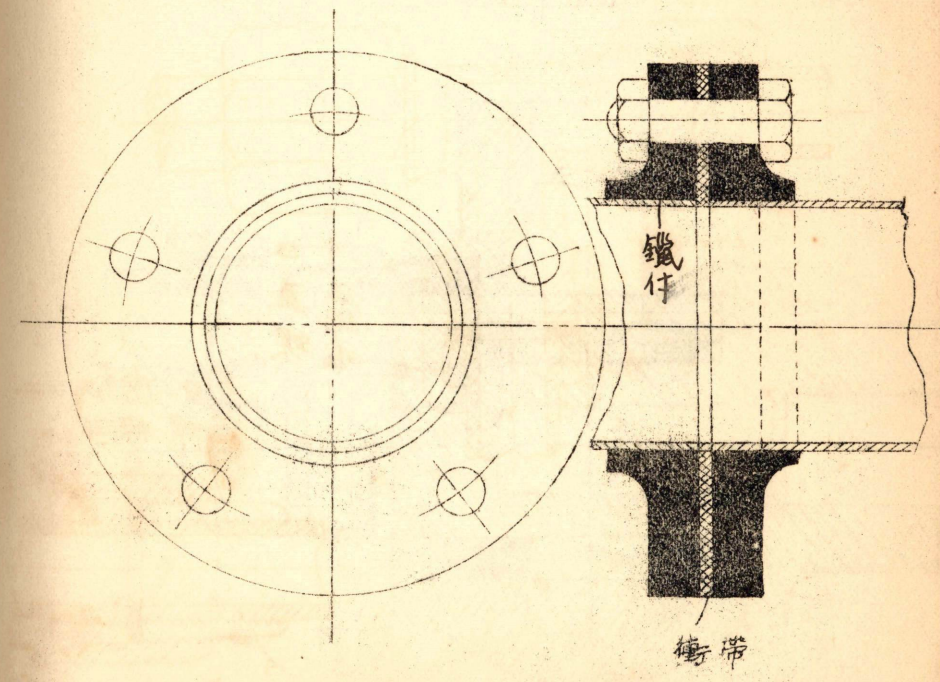
甲圖 9第  
鐵管出水口大



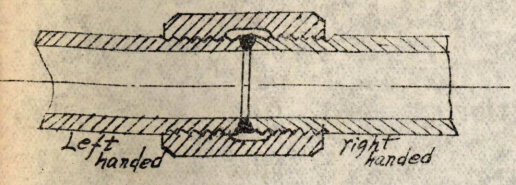
第9圖, 甲, 二  
Double lugged pipe joint.



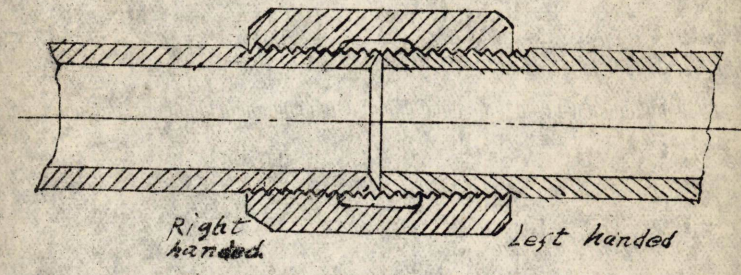
第9圖甲, 三  
排水管銜接手



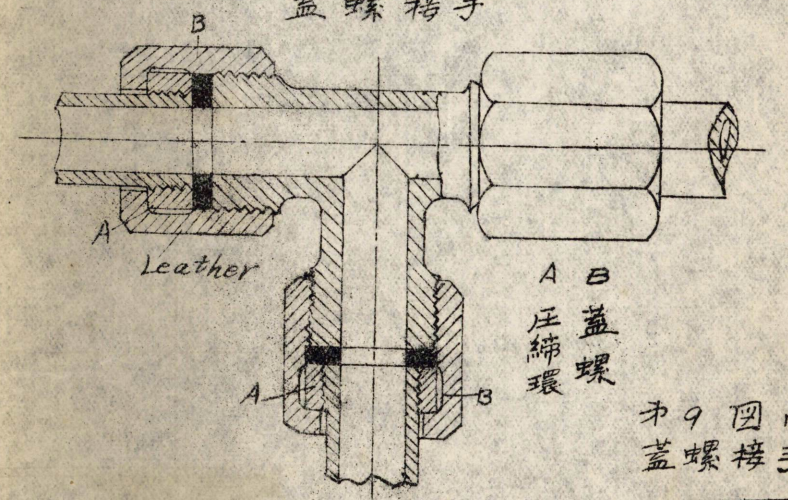
第9圖, 乙, 一  
鞘螺接手



第9圖乙, 二  
鞘螺接手

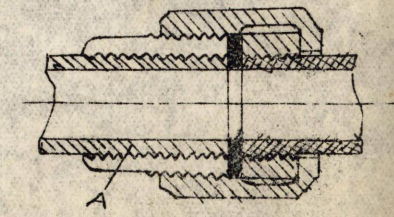


第9圖丙, 一  
蓋螺接手

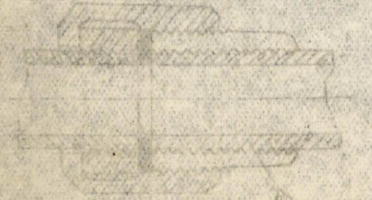
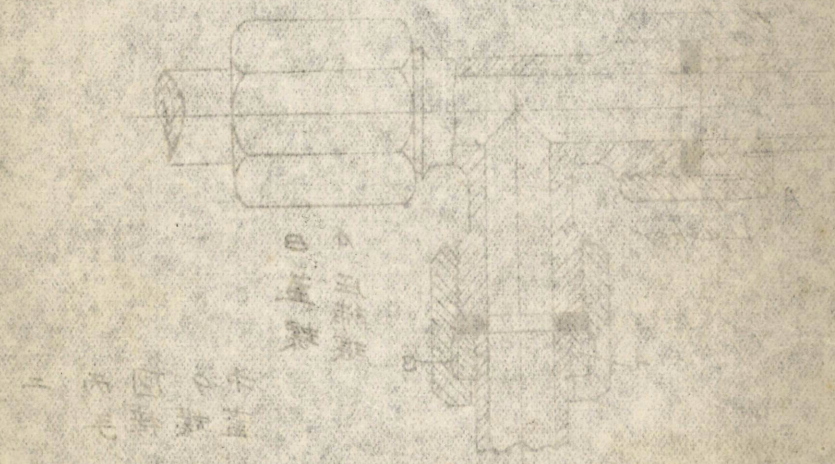
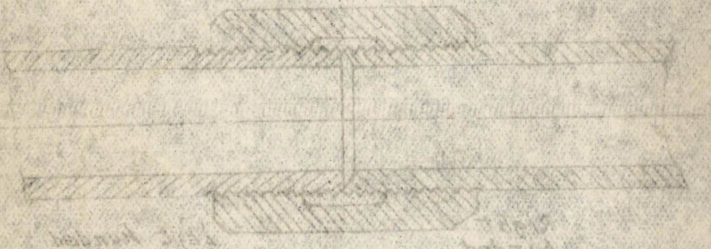


A B  
壓縮環 蓋螺

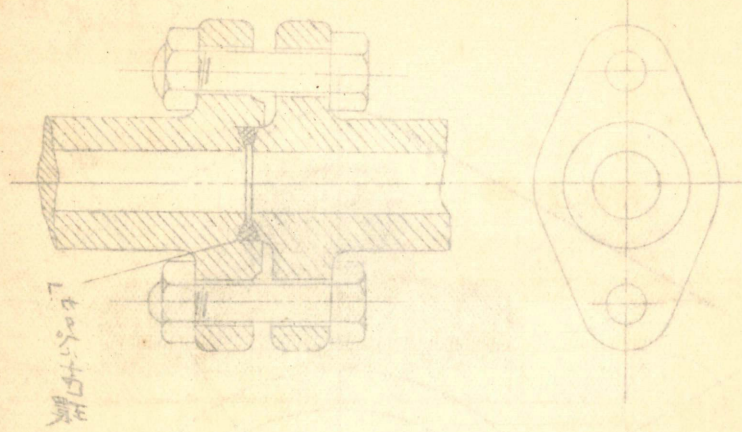
第9圖丙, 二  
蓋螺接手



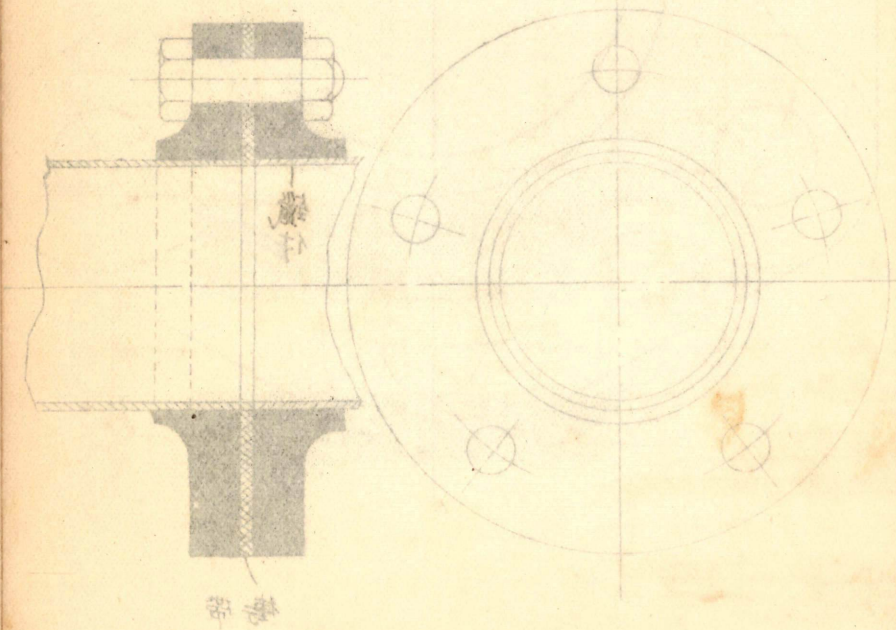
999  
丙乙甲  
一一二  
二二三



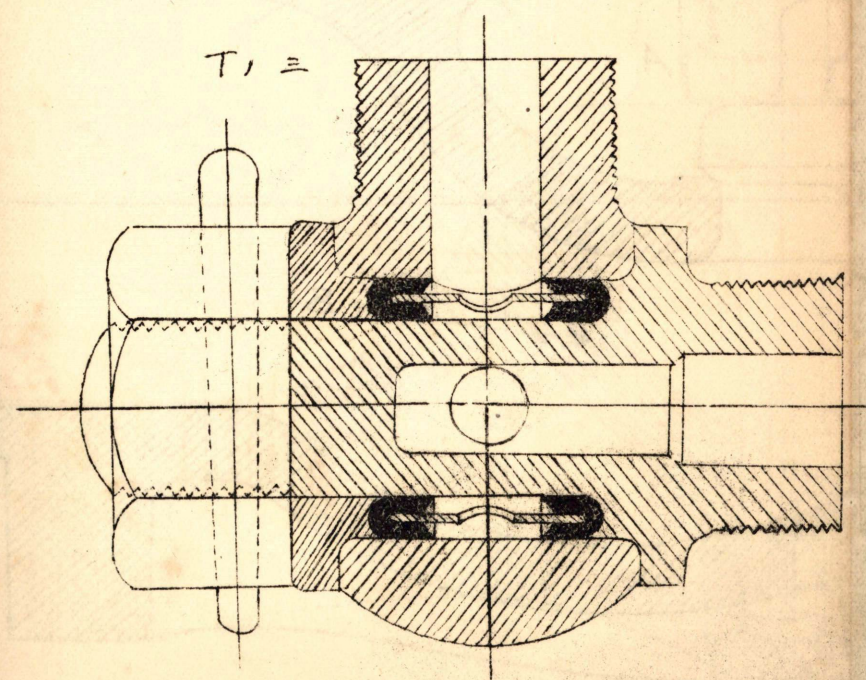
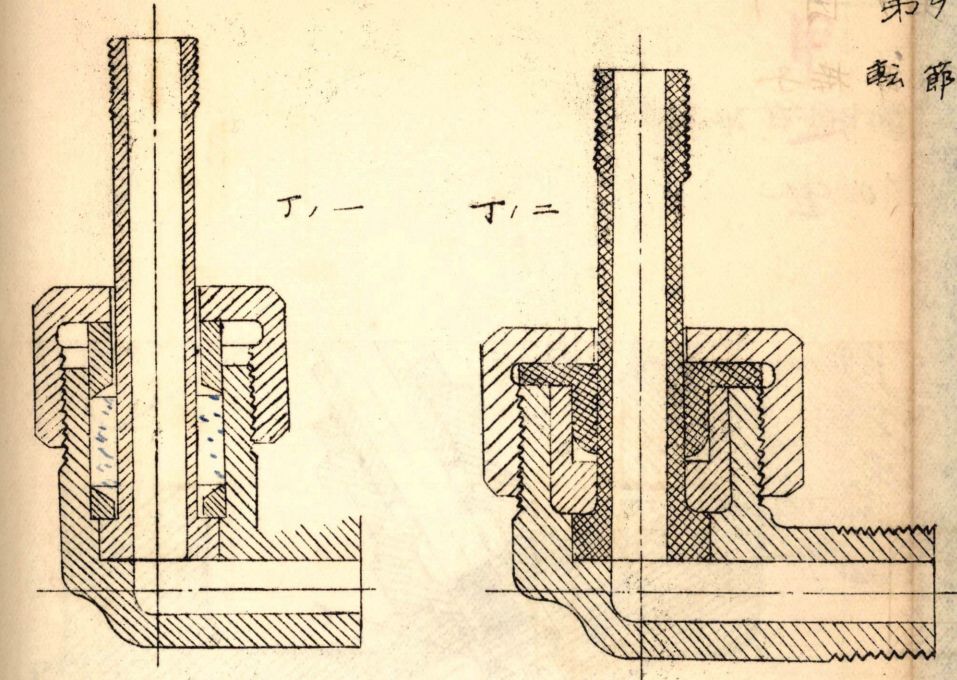
第9圖(甲)二  
Double ended pipe joint.



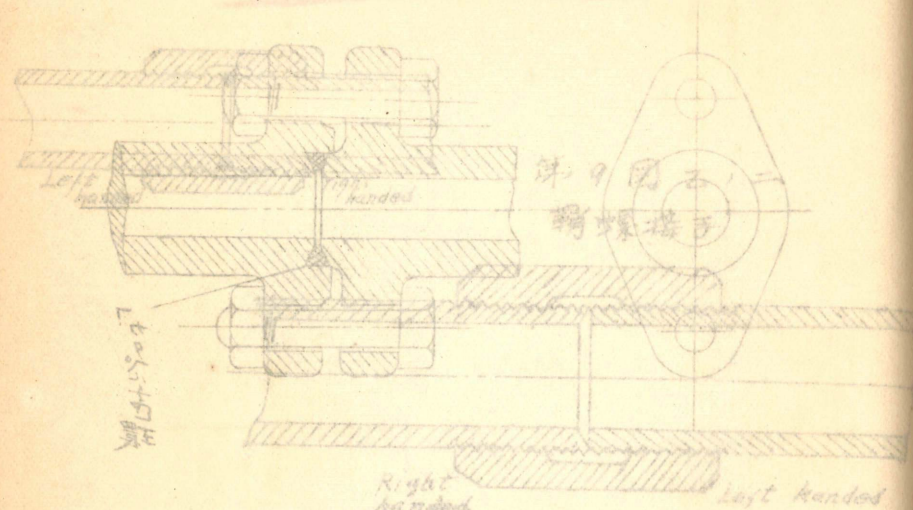
橫式端端接中  
號二圖甲二



第9圖丁  
轉節接子



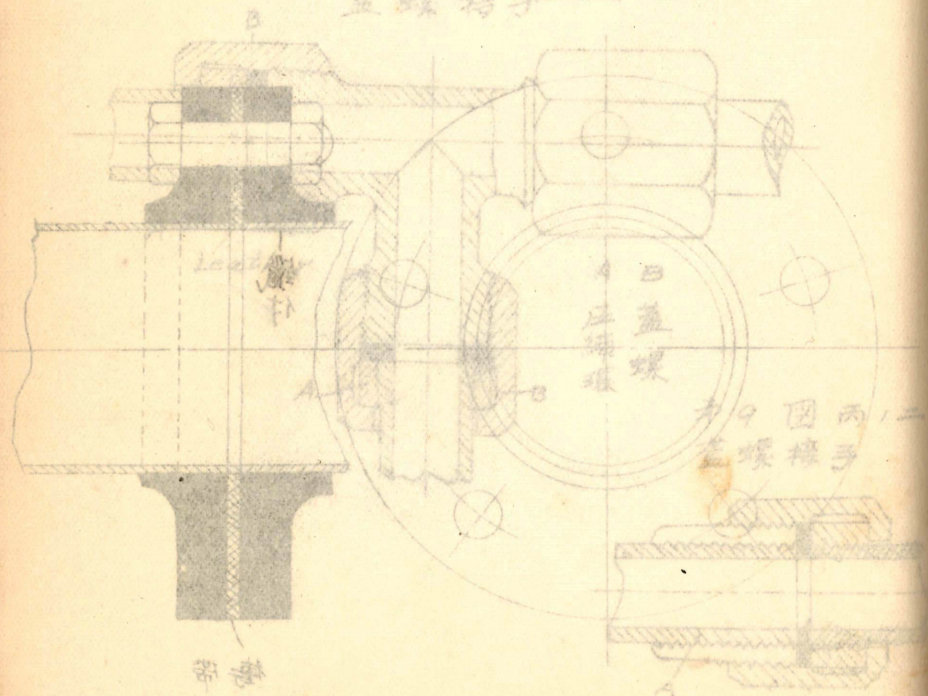
第9圖乙二甲圖  
 Double Lapped Pipe Joint



第9圖乙二  
 雙螺接子

Right handed  
 Left handed

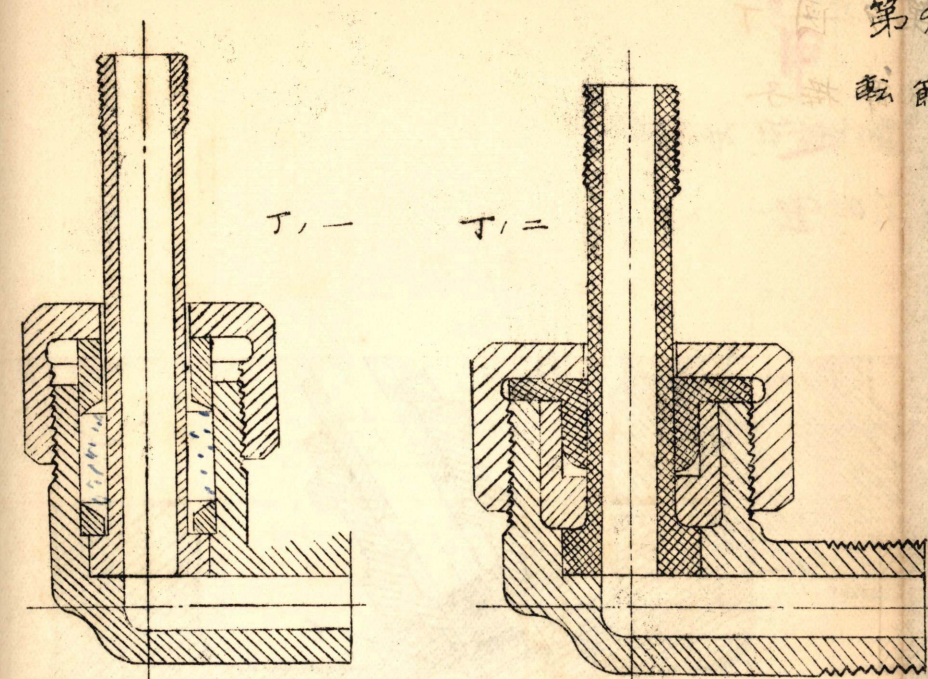
第9圖甲三  
 雙螺接子



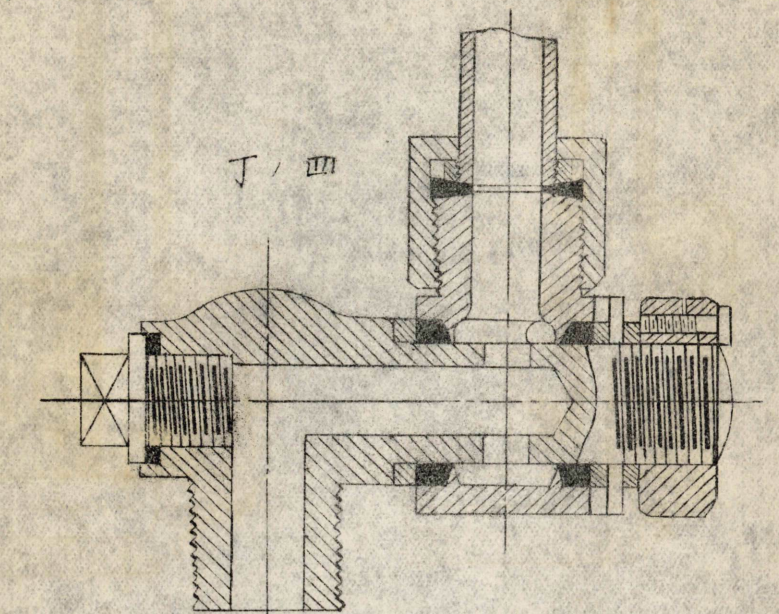
蓋螺  
 雙螺接子

第9圖丙二  
 雙螺接子

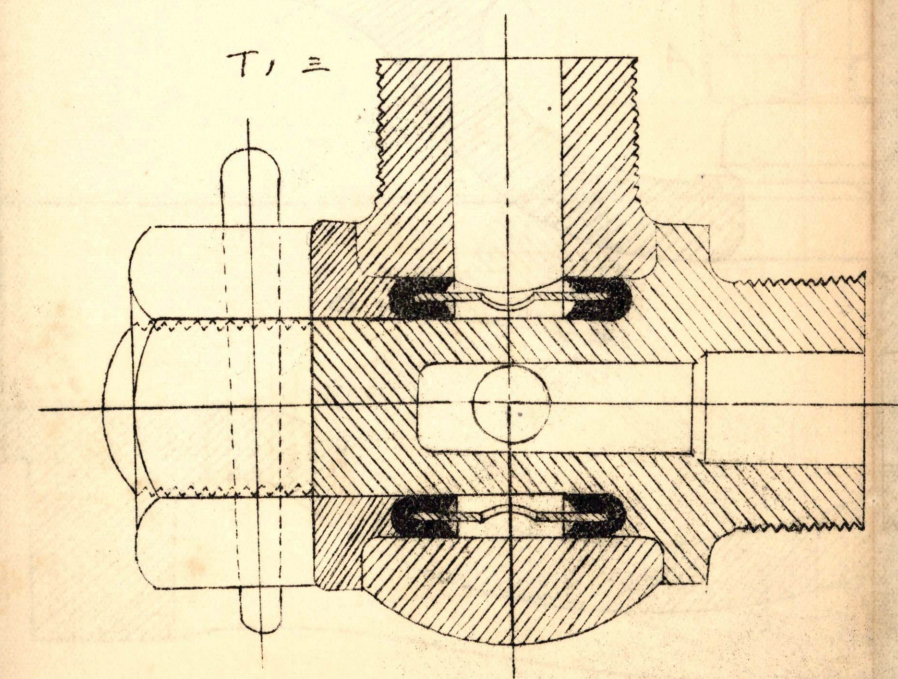
第9圖丁  
 駢節接子



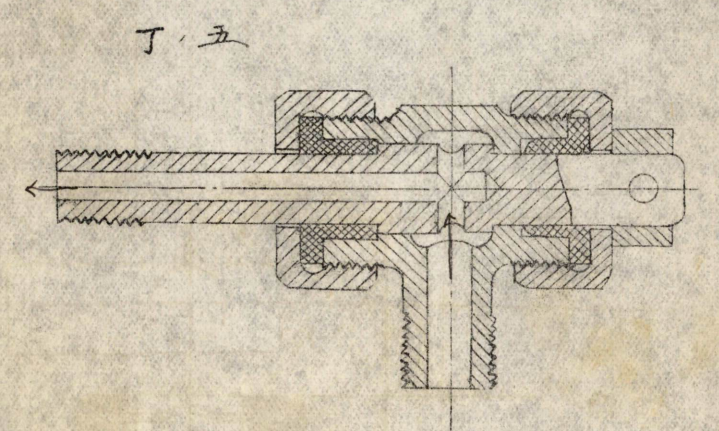
丁一  
 丁二



丁四

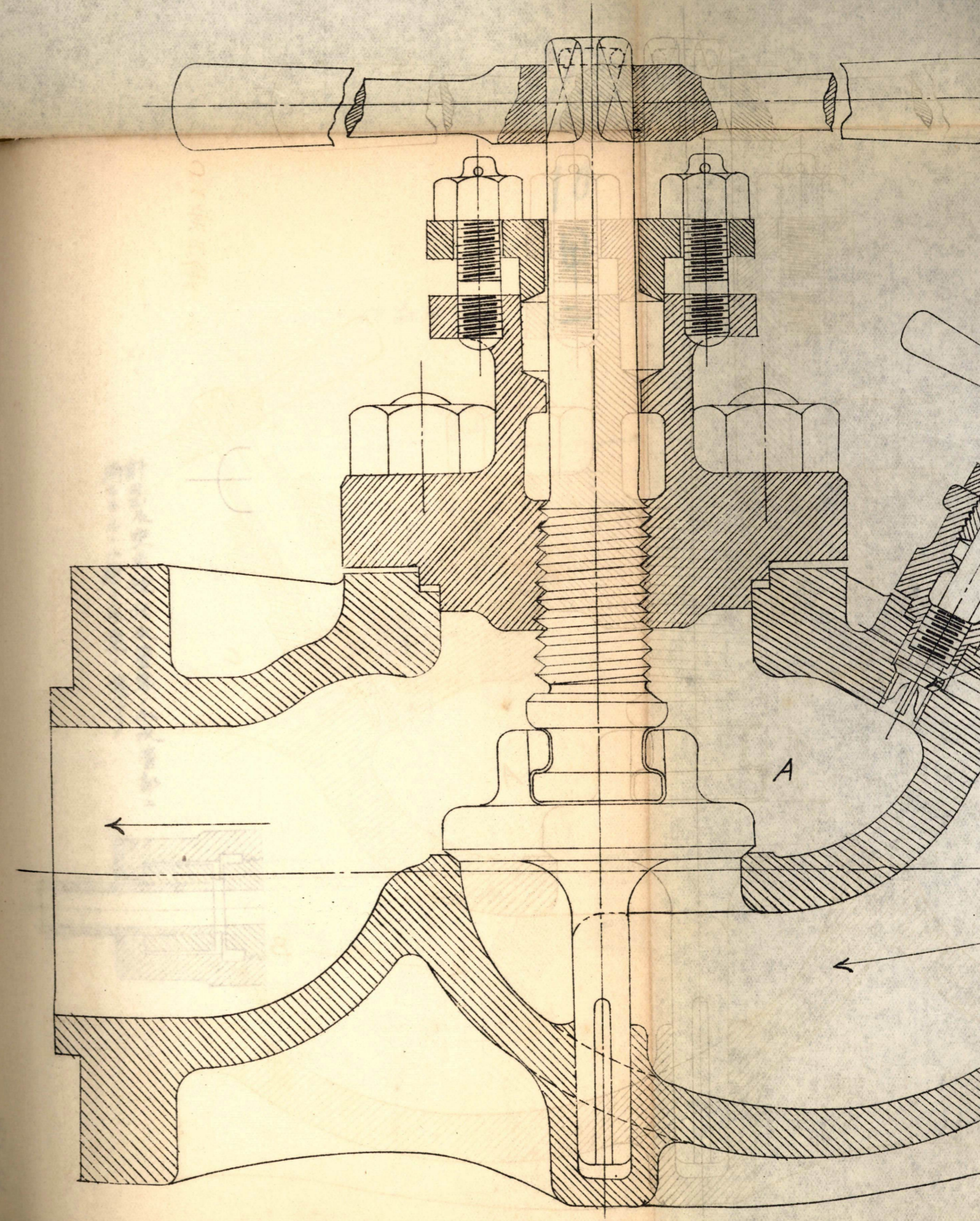


丁三

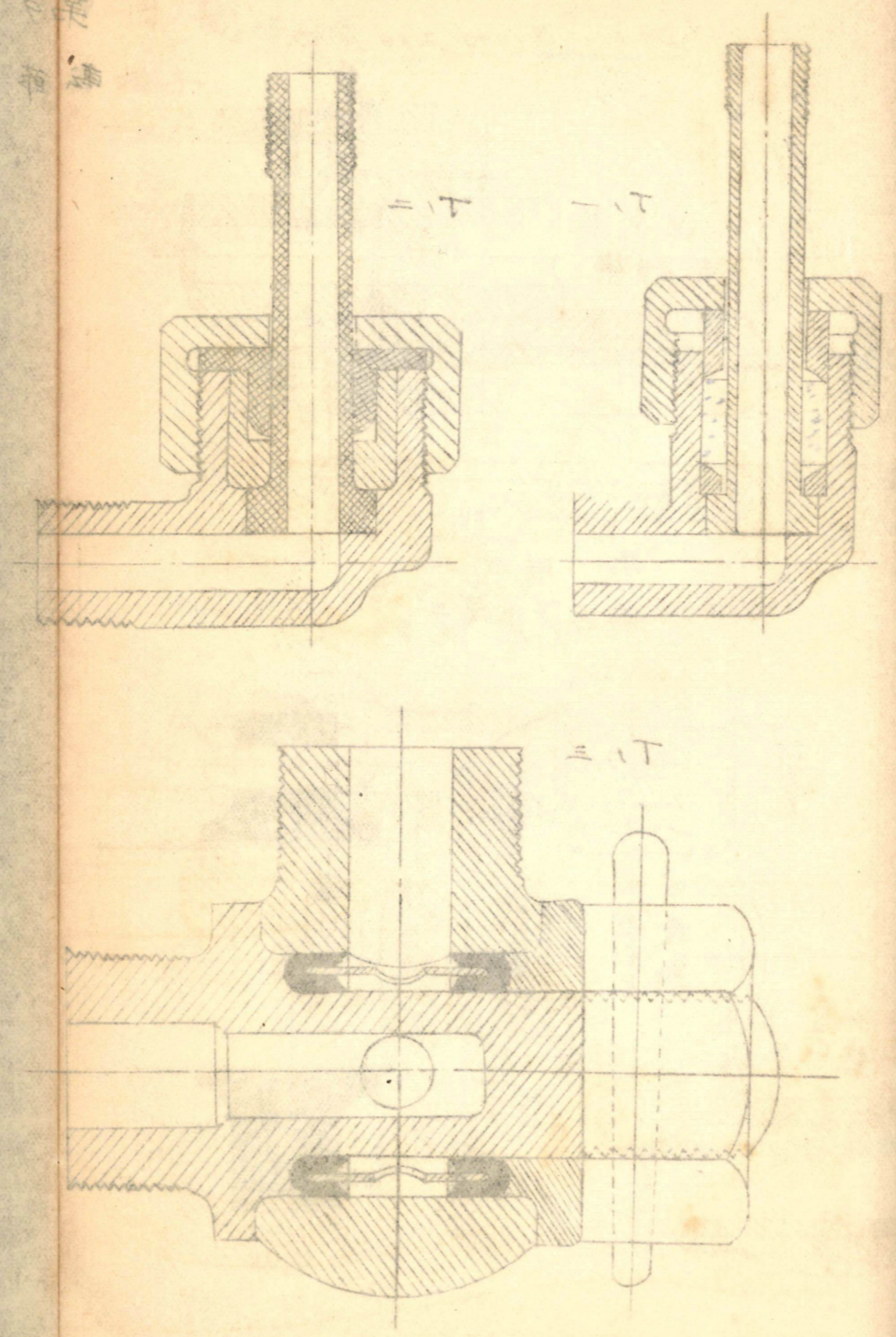


丁五

第10图甲一  
水压用塞止集

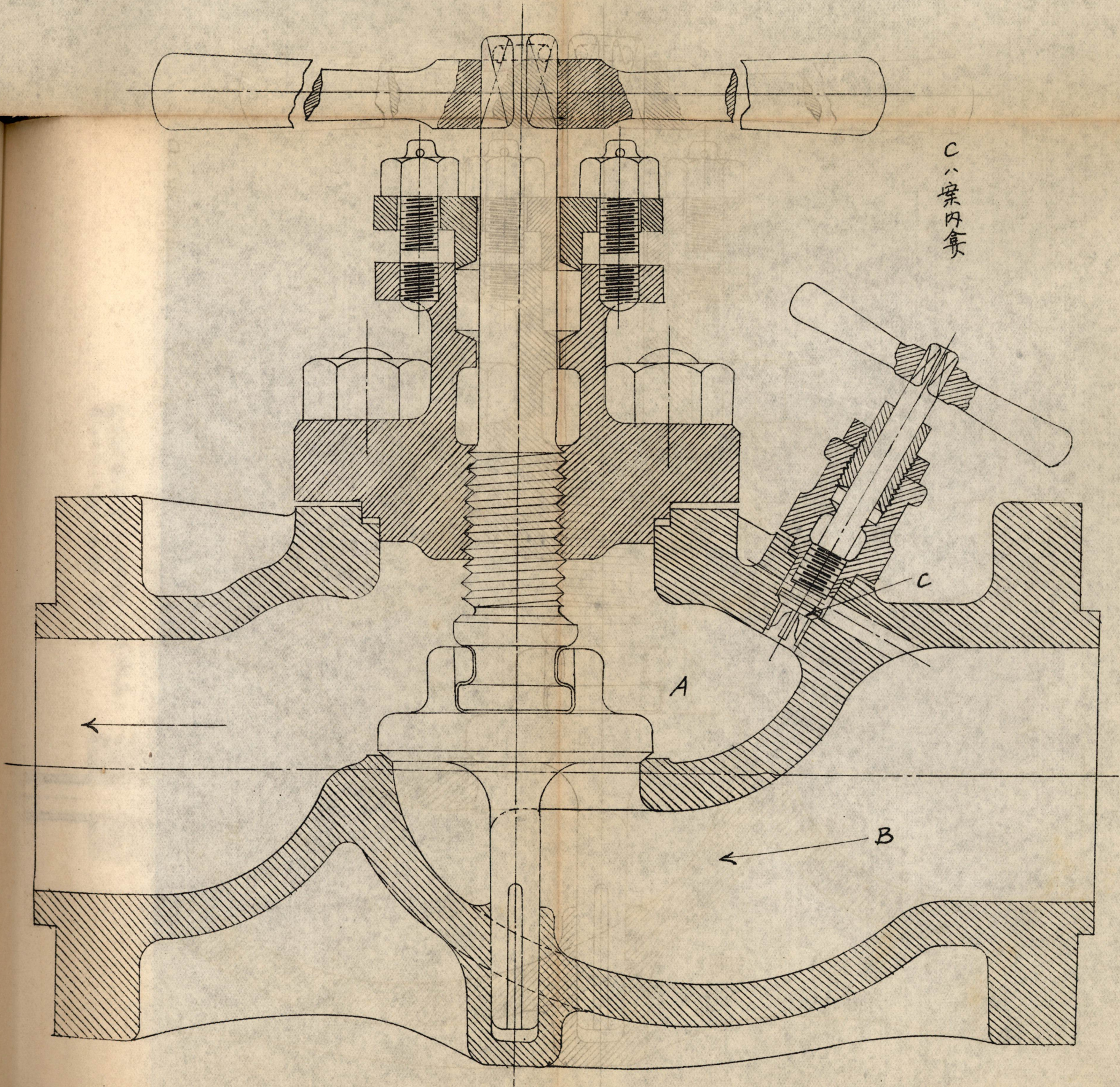


水压用

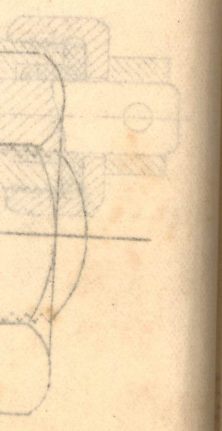
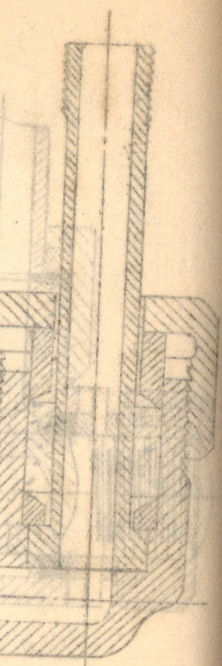


9  
丁  
一、二、三、四、五

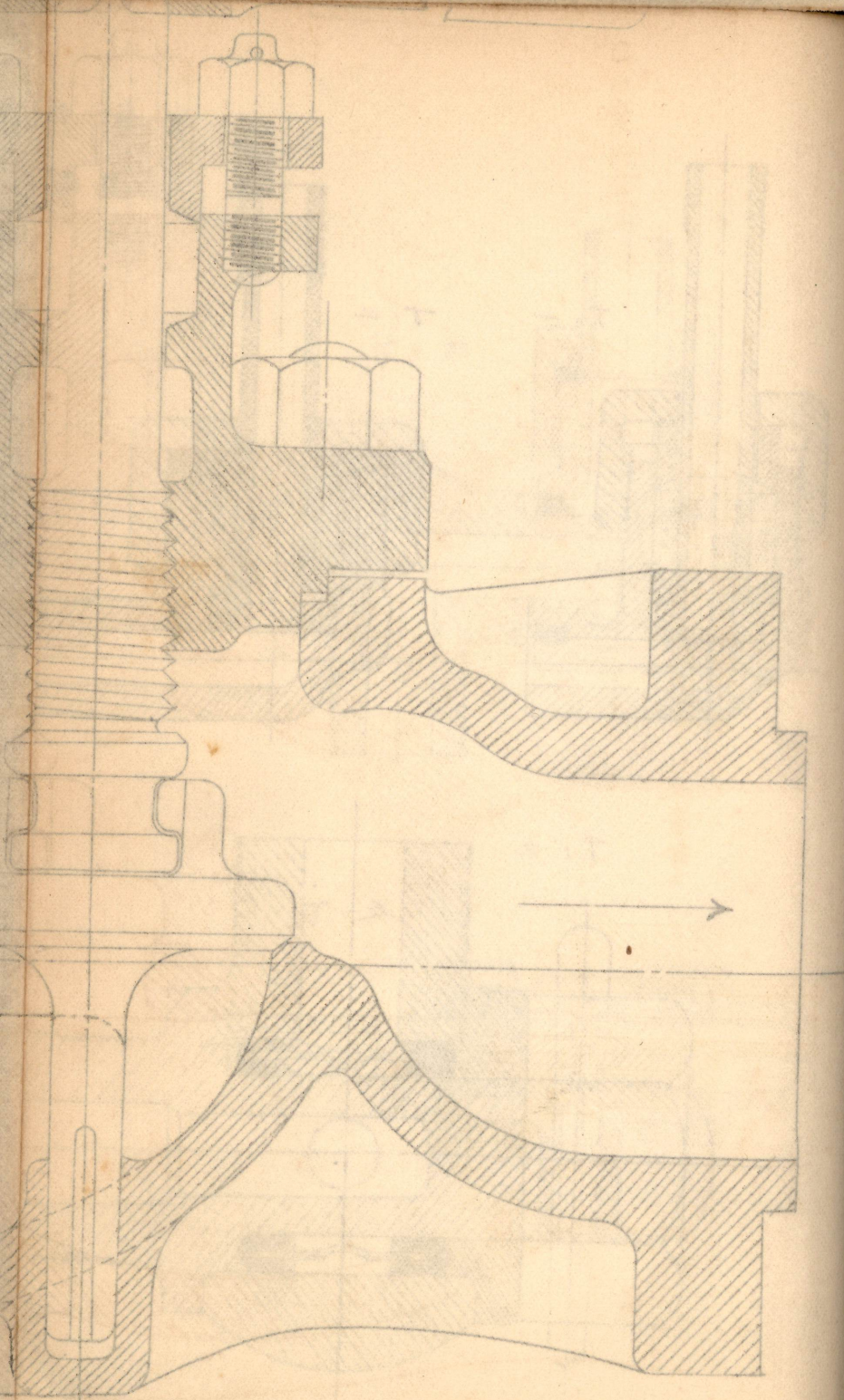
第10图甲一  
水压用塞止集



C  
八  
案  
内  
集

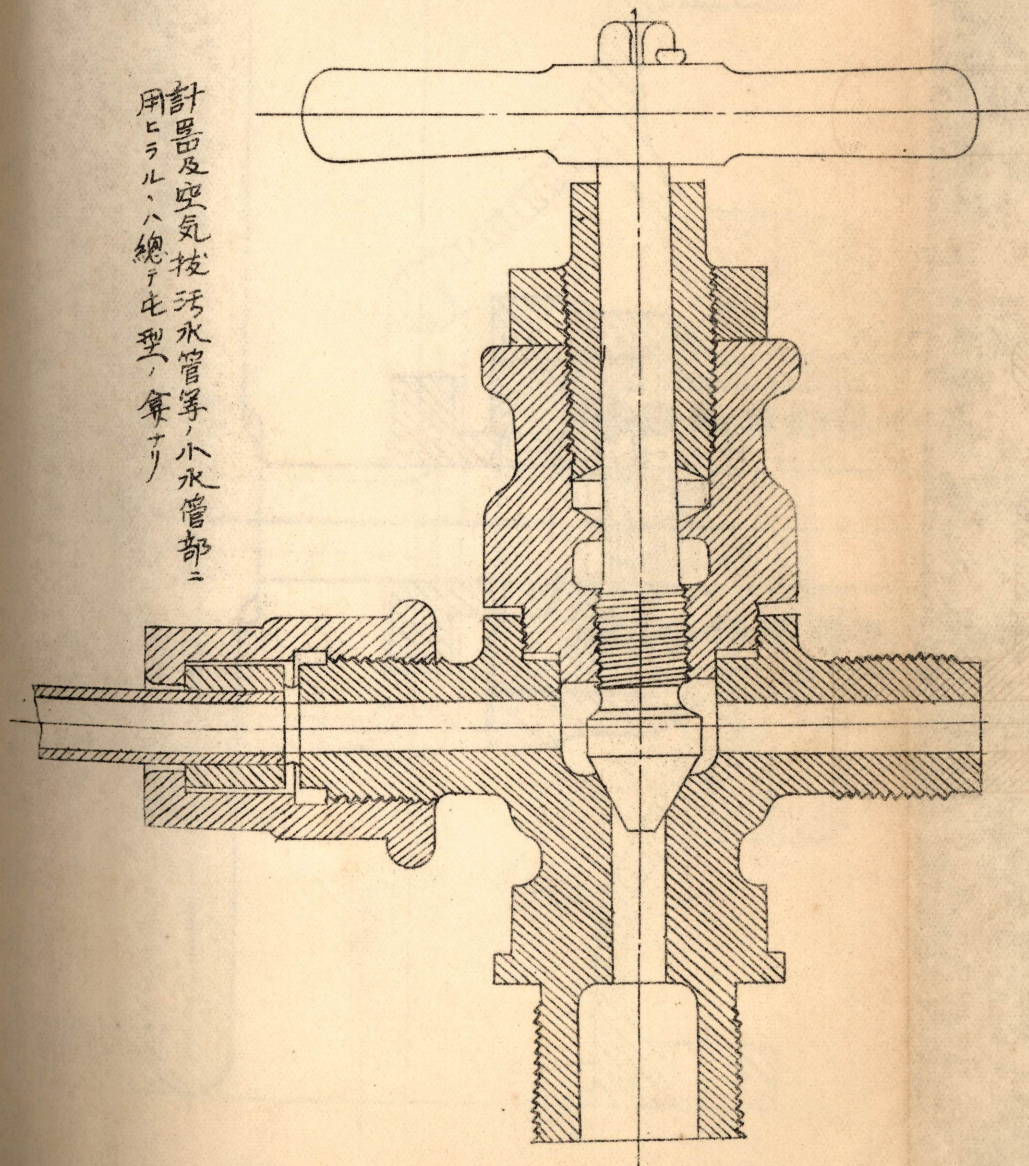


10  
01



第10図甲ニ

水圧調理器用零64<sup>mm</sup>ストップ弁

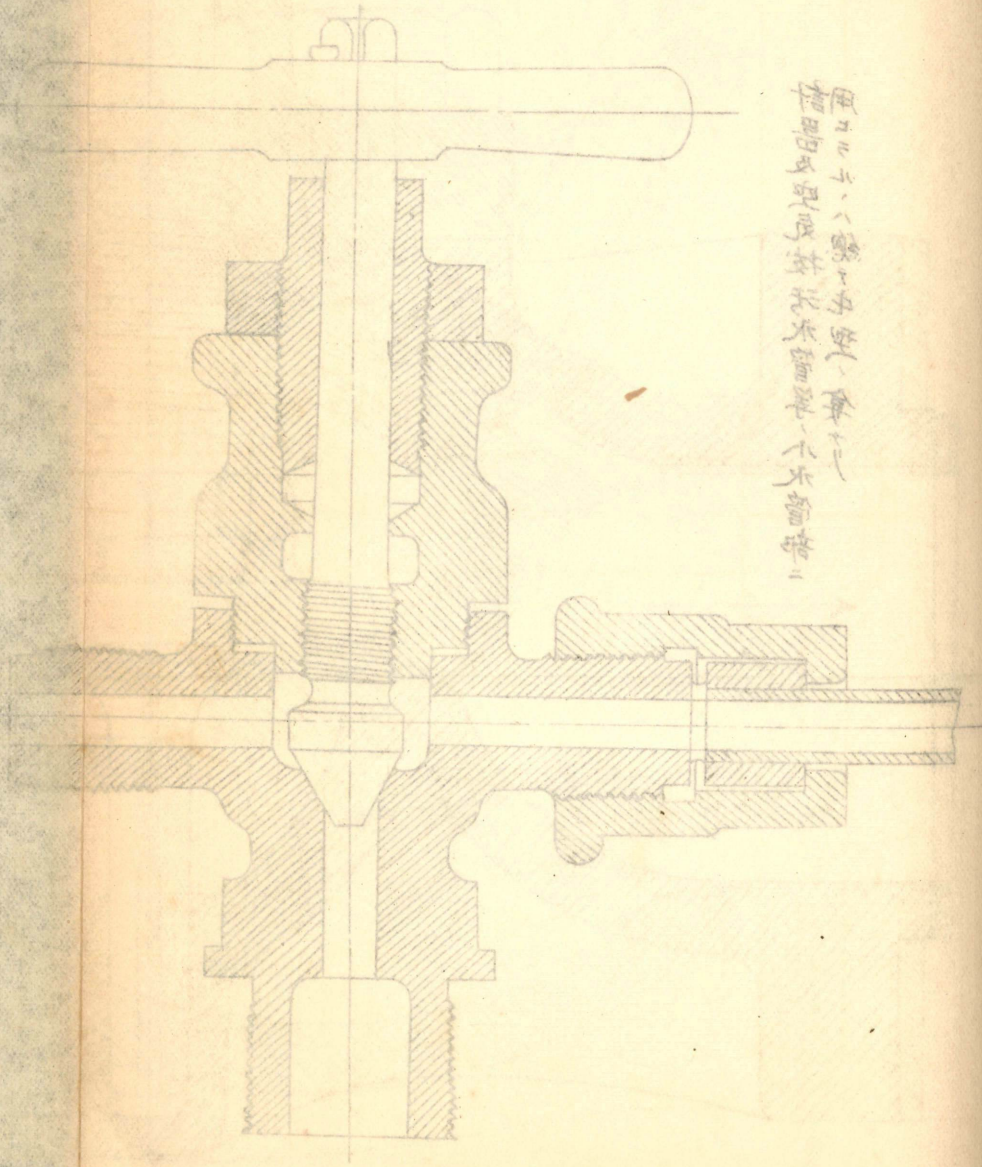


計器及空気按汚水管等、小水管部ニ  
用ヒラル、ハ總テ生型、兼ナリ

10  
甲  
二

第二圖

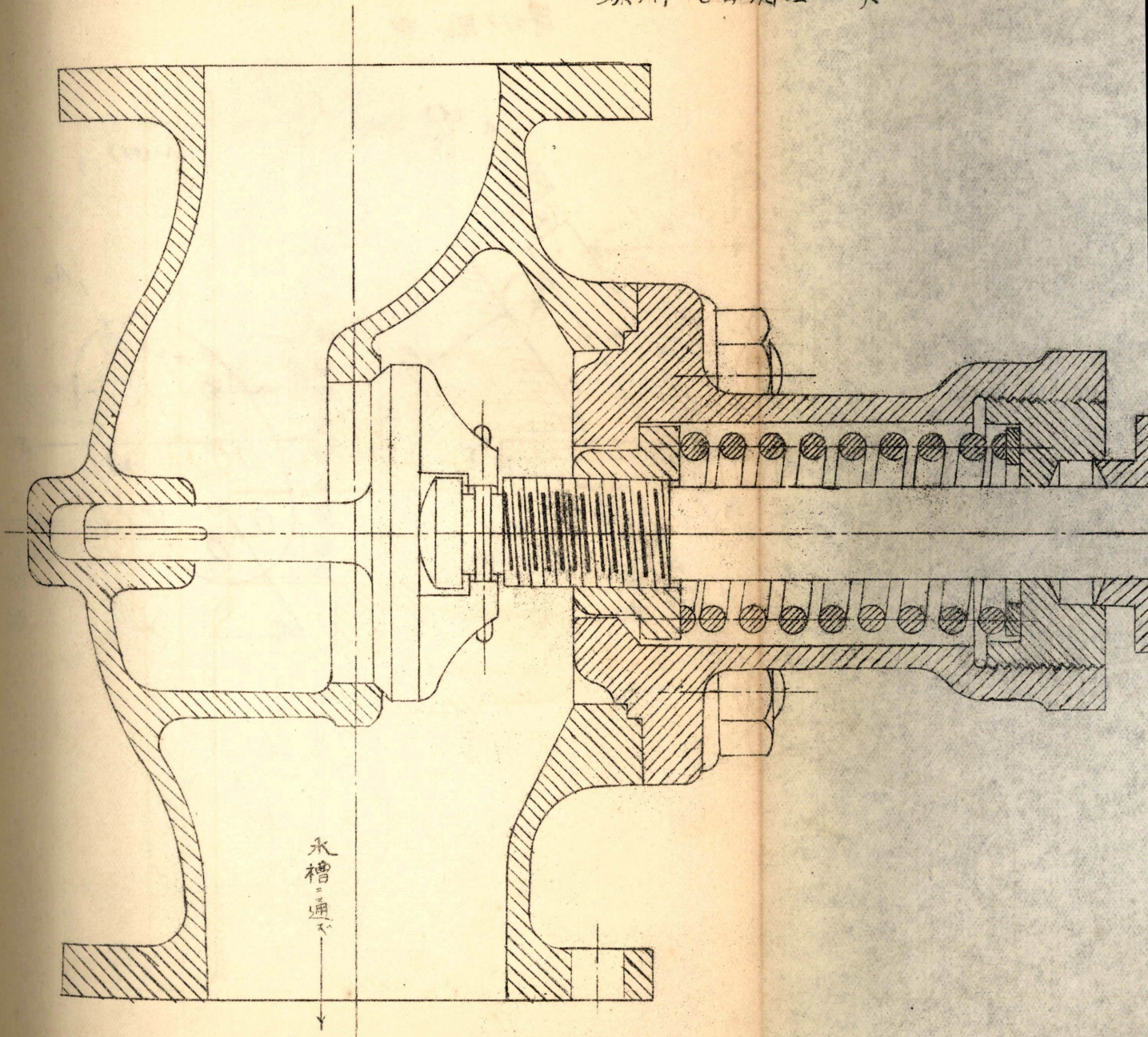
水用通器



此圖之構造係由一水用通器  
與一水用通器之構造係由一水用通器  
與一水用通器之構造係由一水用通器

11 10

第10圖 乙  
蝶閉式自開塞止弁



水槽=通水