

機關術教科書 水壓機關 附圖

海軍機關學校

一、本書ハ海軍部外ニ對シ嚴ニ祕密ヲ守ルヲ要ス
 二、本書ハ本人死亡ノ節ハ遺族ヨリ、現役ヲ離レタルトキハ本人ヨリ本校ニ還納スヘシ
 三、本書ヲ亡失、毀損セルトキハ其ノ顛末ヲ本校ニ詳報スヘシ

附圖
 五十三枚

調製
 年月日
 昭和二年三月三十日

生徒第三學年
 選修學生

資料登錄
 E81A511号
 55.6.12
 2 術校
 研究部資料課

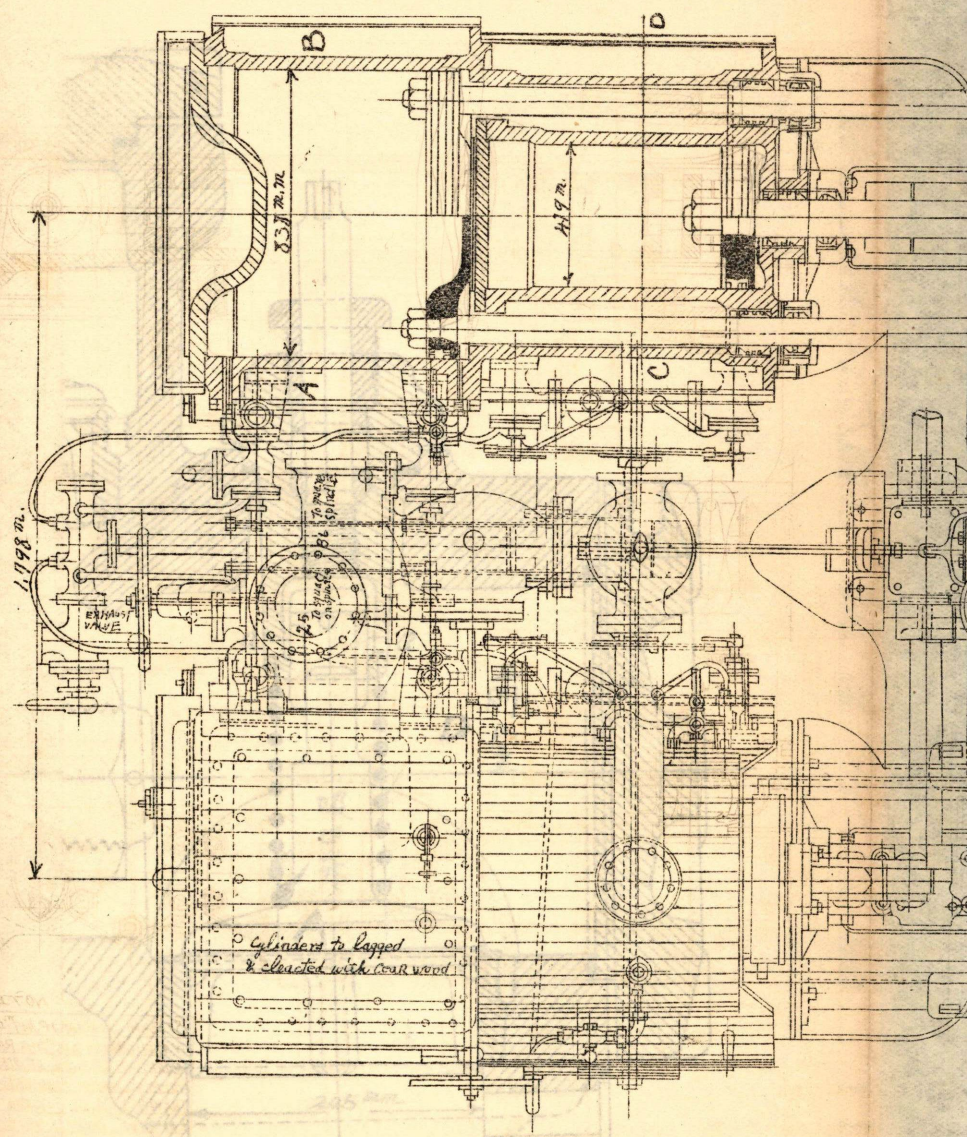
A
 62



SIDE ELEVATION

1.579^m LENGTH OF CYLINDERS

4.346^m

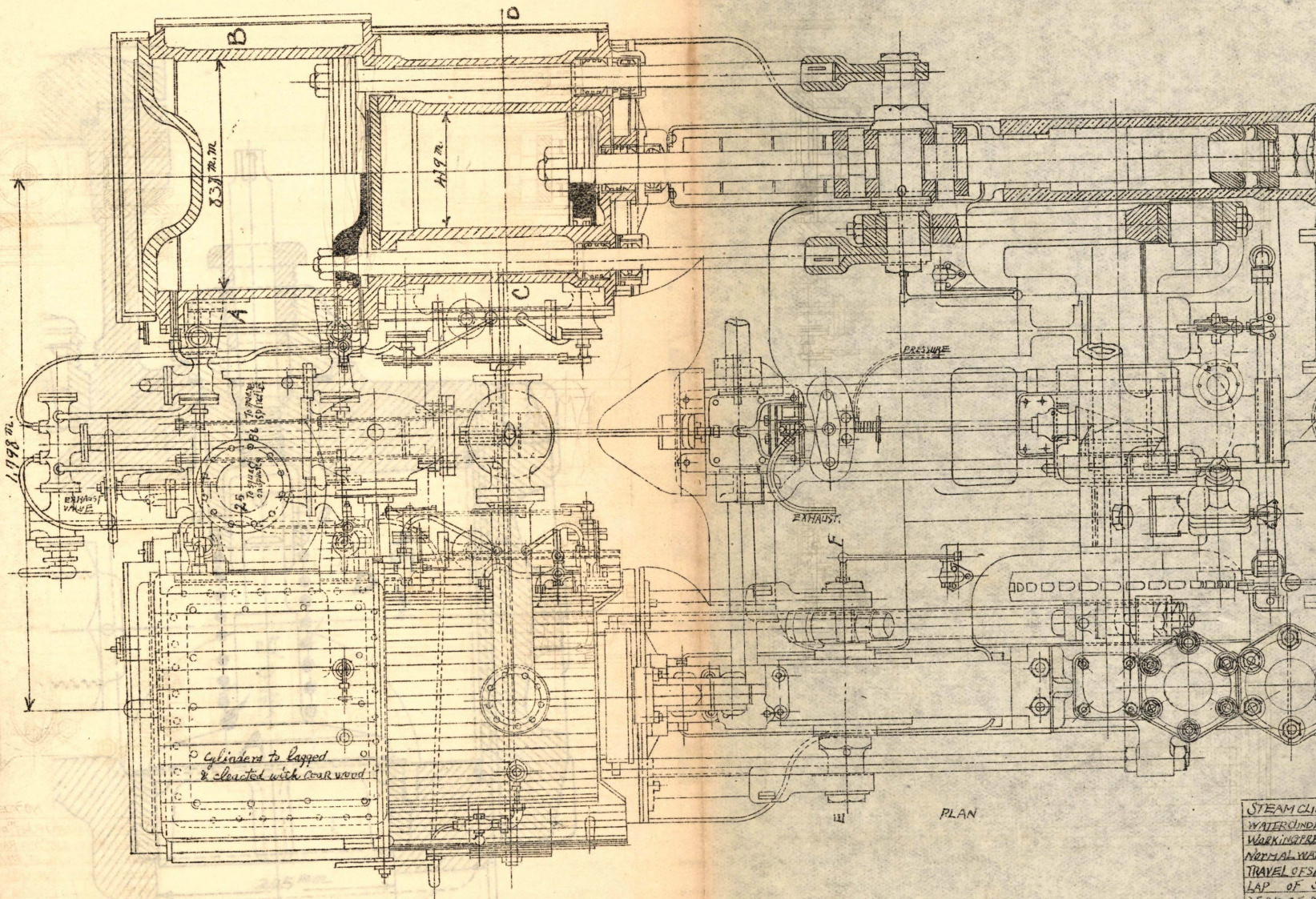
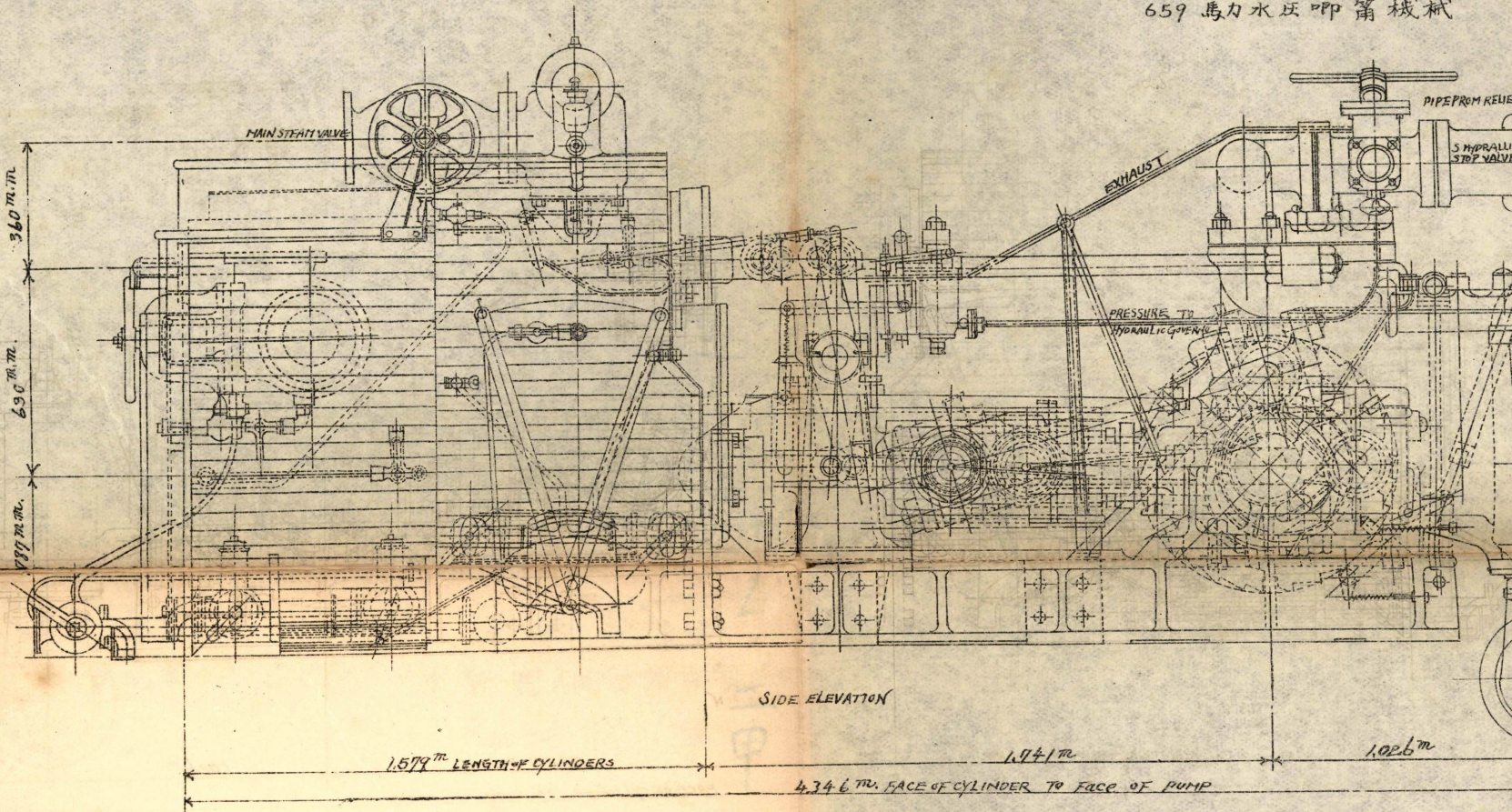


1.198^m

ENTRANCE VALVE

2.5
on diameter
of valve

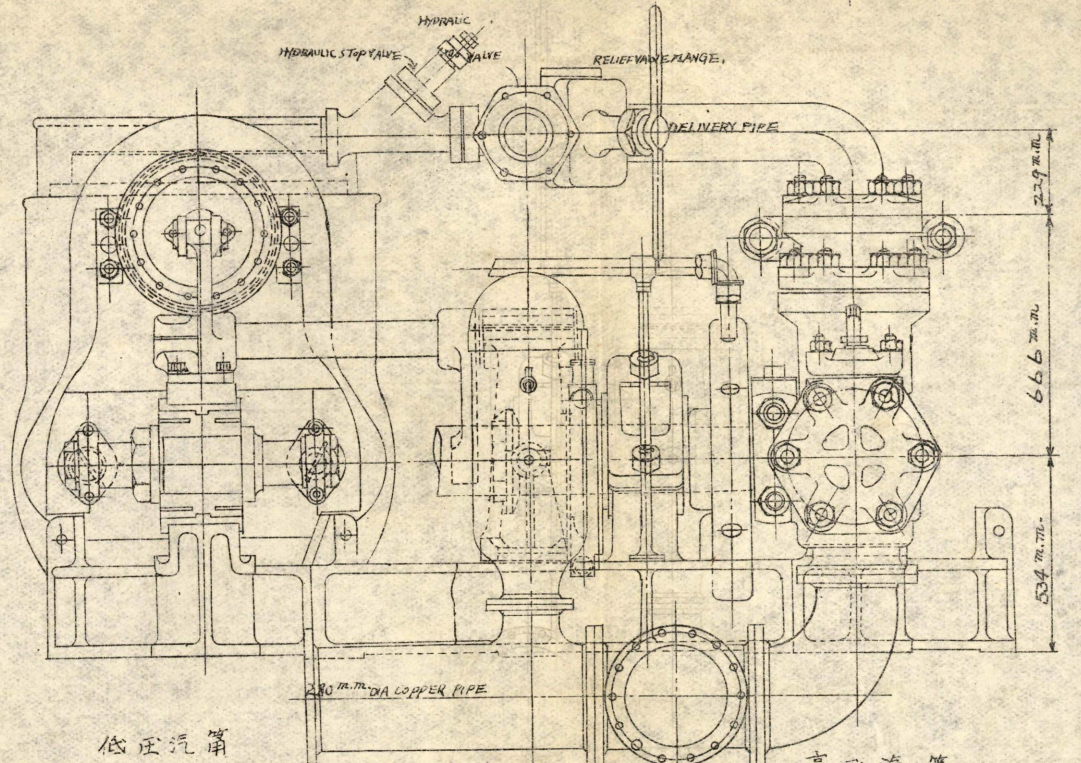
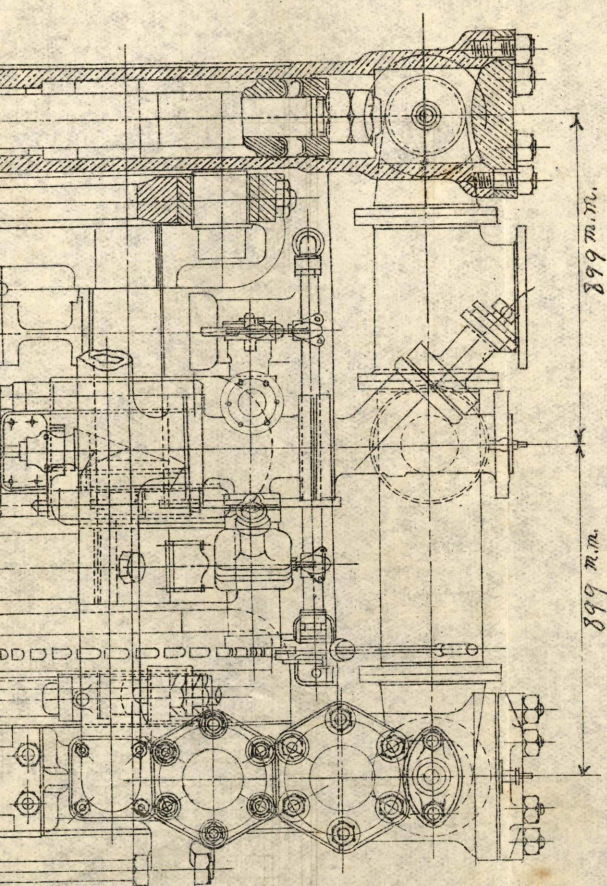
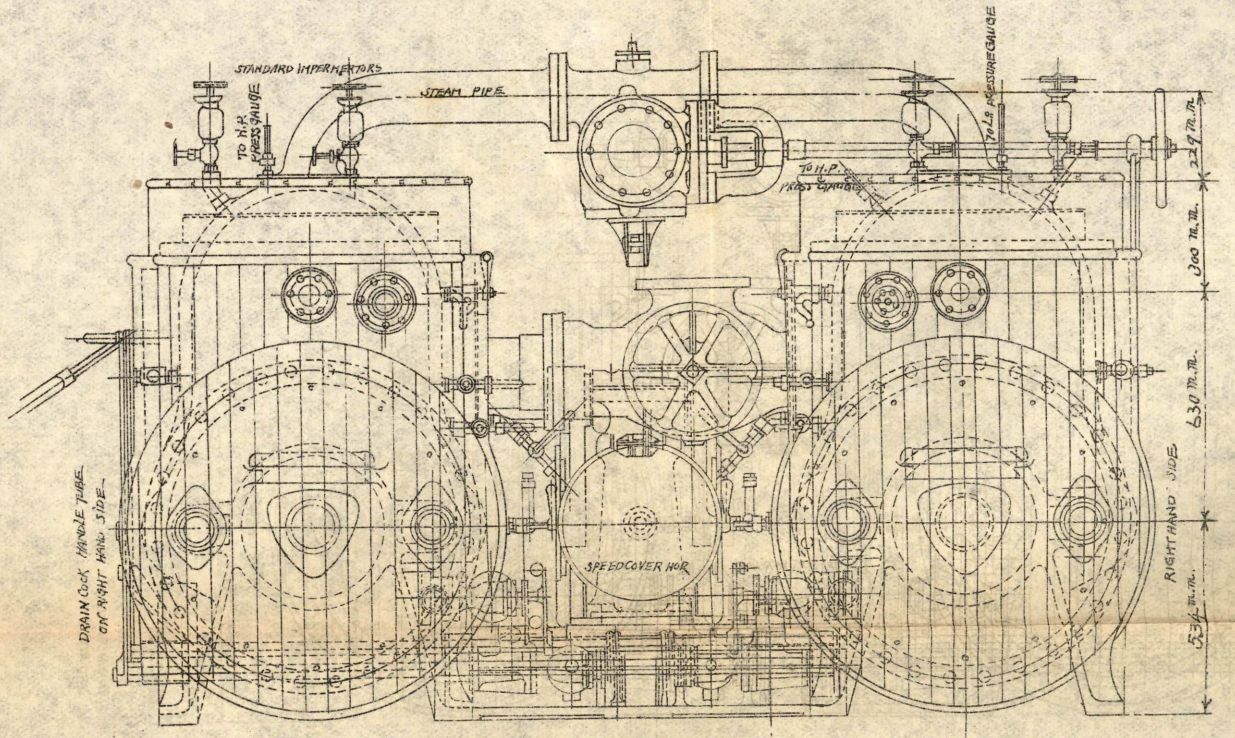
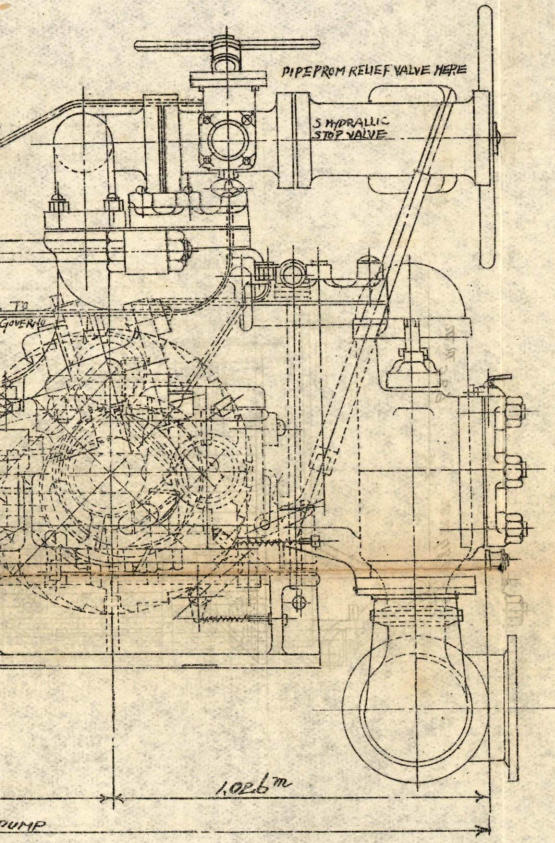
Cylinders to be lapped
& coated with car varnish



STEAM CL
 WATER CIND
 WORKING STER
 NORMAL WAS
 TRAVEL OF S
 LAP OF S
 LEAD OF S
 CUT OFF A
 MAXIMUM
 H.P. CYLINDER
 TO 2.04
 STEAM & E
 TO BE TES

第 1 图, 一

59 馬力水圧唧筒機械



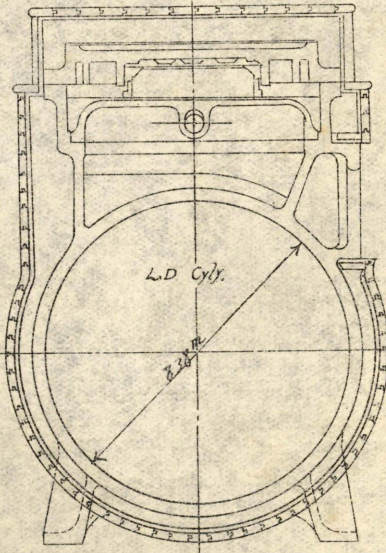
低圧汽筒

SECTION AT EF

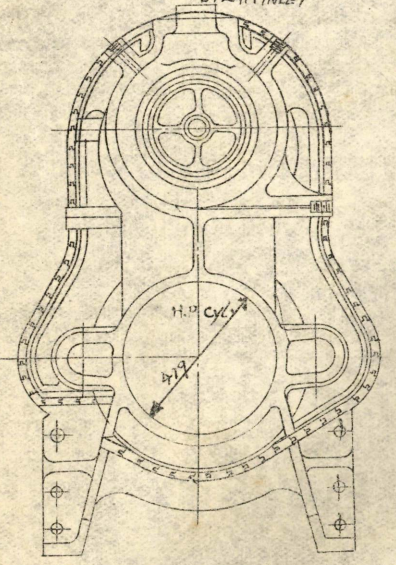
HALF END ELEVATION

高圧汽筒

STEAM INLET



SECTION AT A.B.

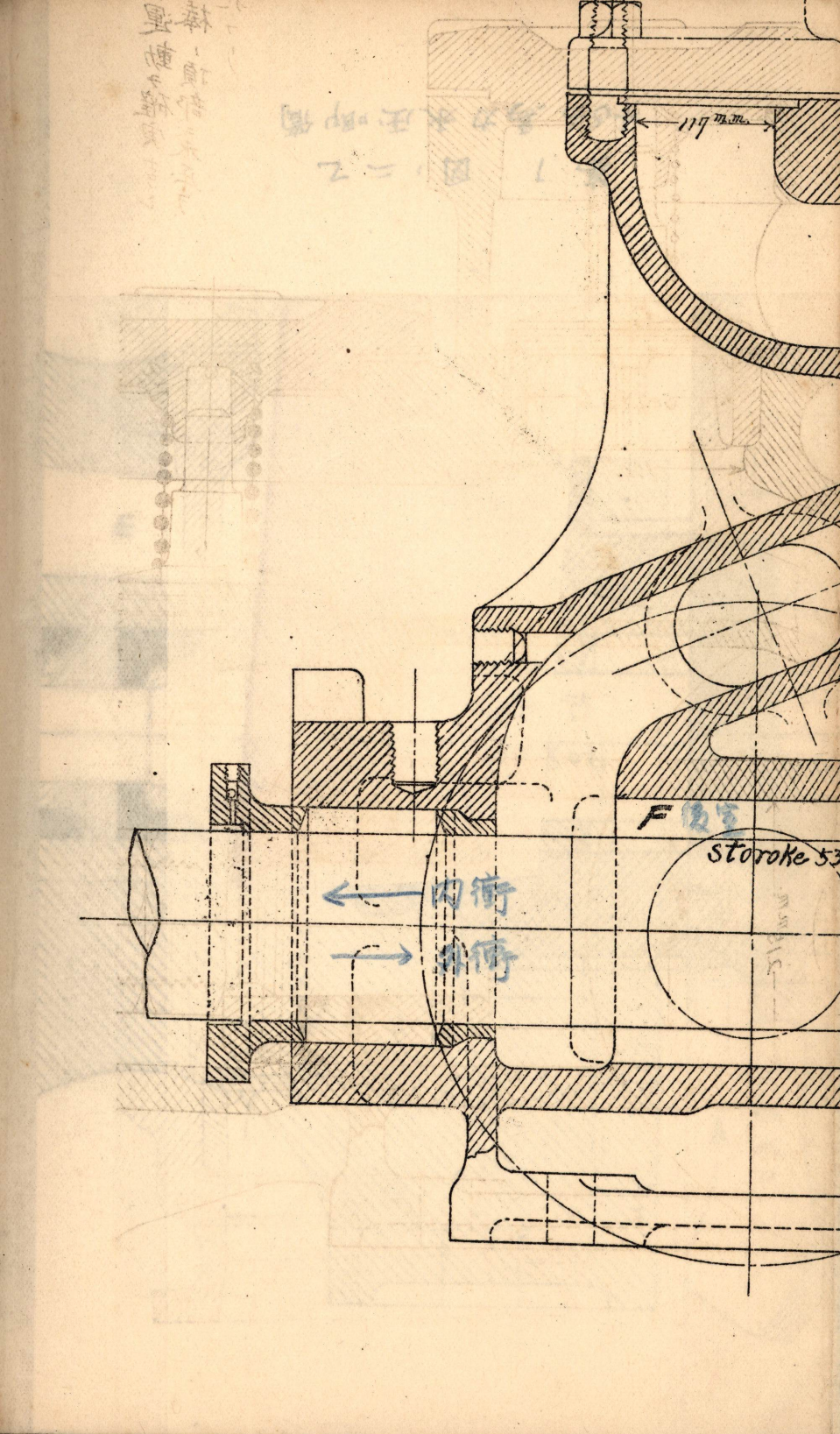
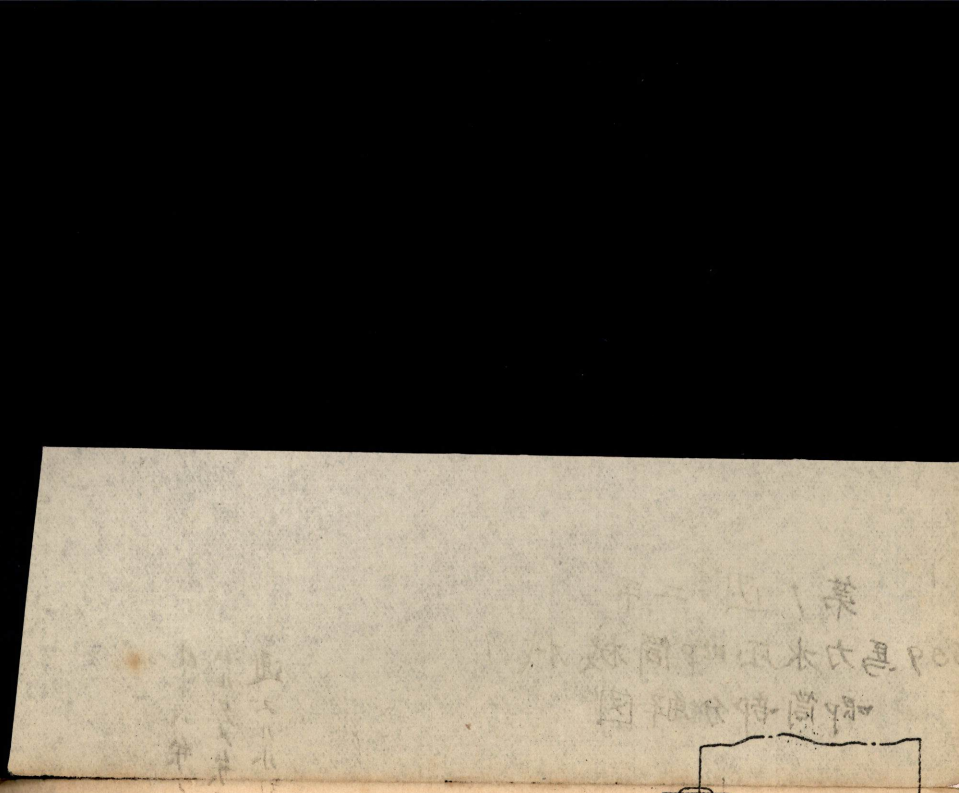
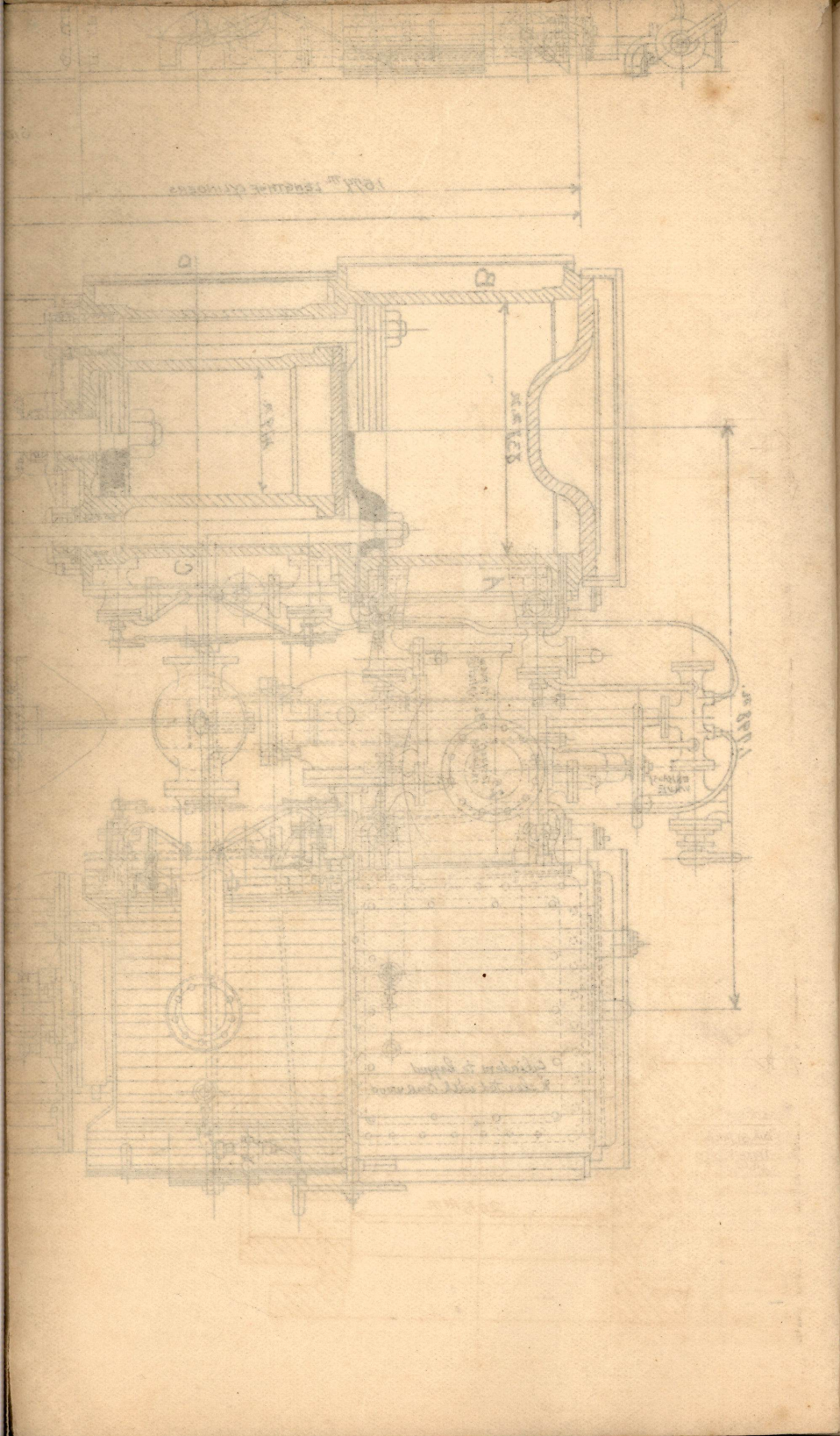
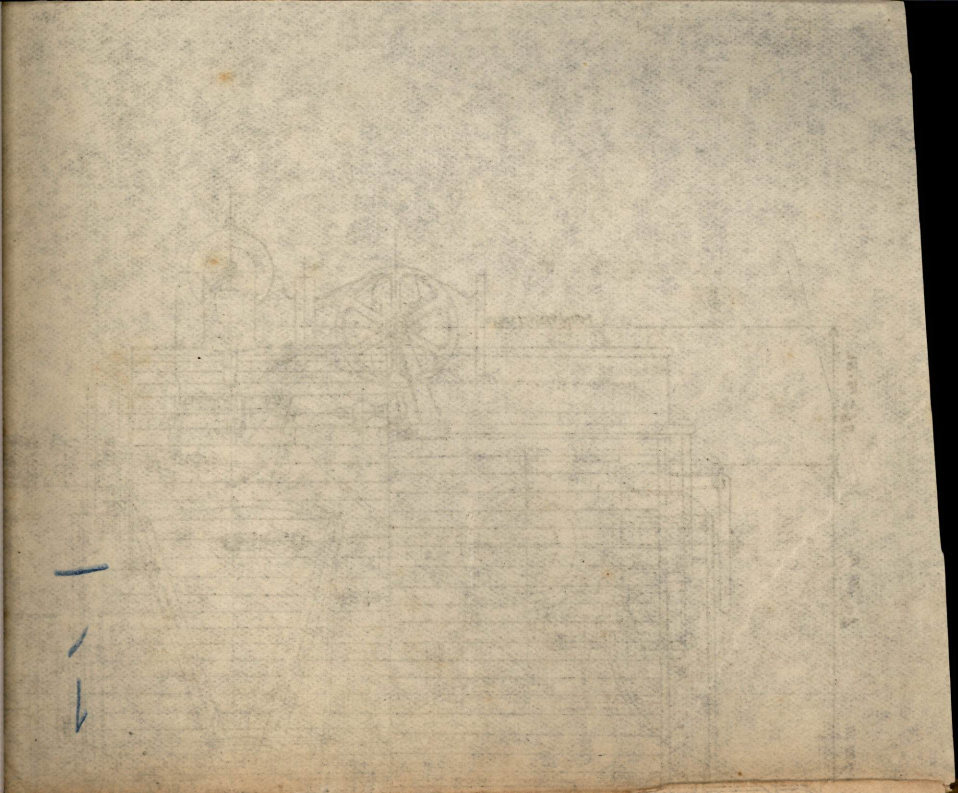


SECTION AT C.D.

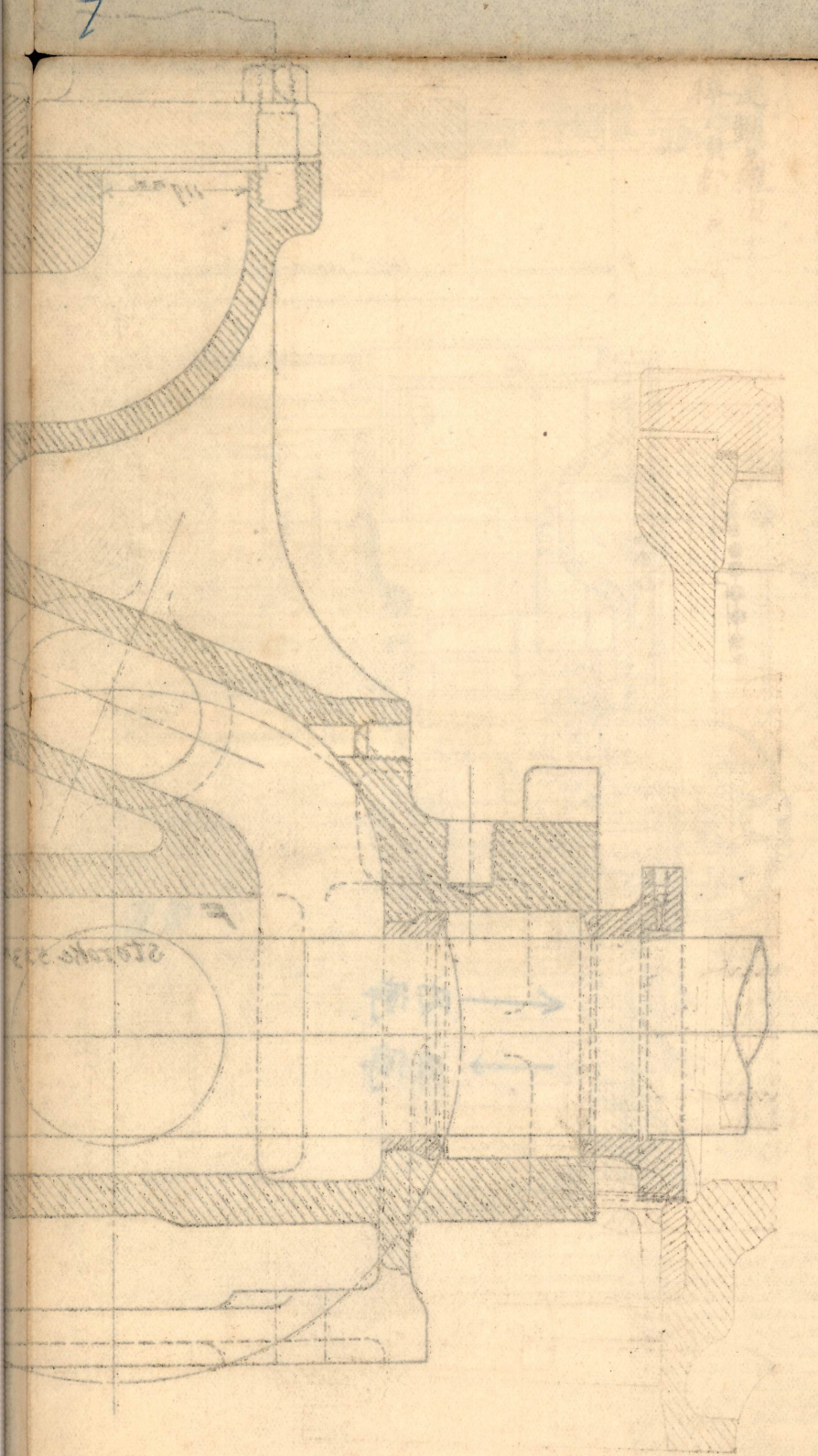
NOTES

- STEAM CYLINDERS 110" DIA. L.P. 838" DIA. STROKE 533" M.
- WATER CYLINDERS 215" DIA. RAH. 110" DIA. STROKE 533" M.
- WORKING PRESSURE OF STEAM 120 K.G./CM²
- NORMAL WATER PRESSURE 80 K.G./CM²
- TRAVEL OF SLIDE & PISTON VALVES 91 mm
- LAP OF SLIDE VALVE 8 mm
- LEAD OF SLIDE VALVE 4 mm
- CUT OFF AT OF STROKE
- MAXIMUM NO. OF REVOLUTIONS PER MINUTE 110
- H.P. CYLINDERS & VALVE CHESTS TO BE TESTED TO 2.04 K.G./CM²
- STEAM & EXHAUST STOP VALVES & STEAM PIPES TO BE TESTED TO 35 K.G./CM²

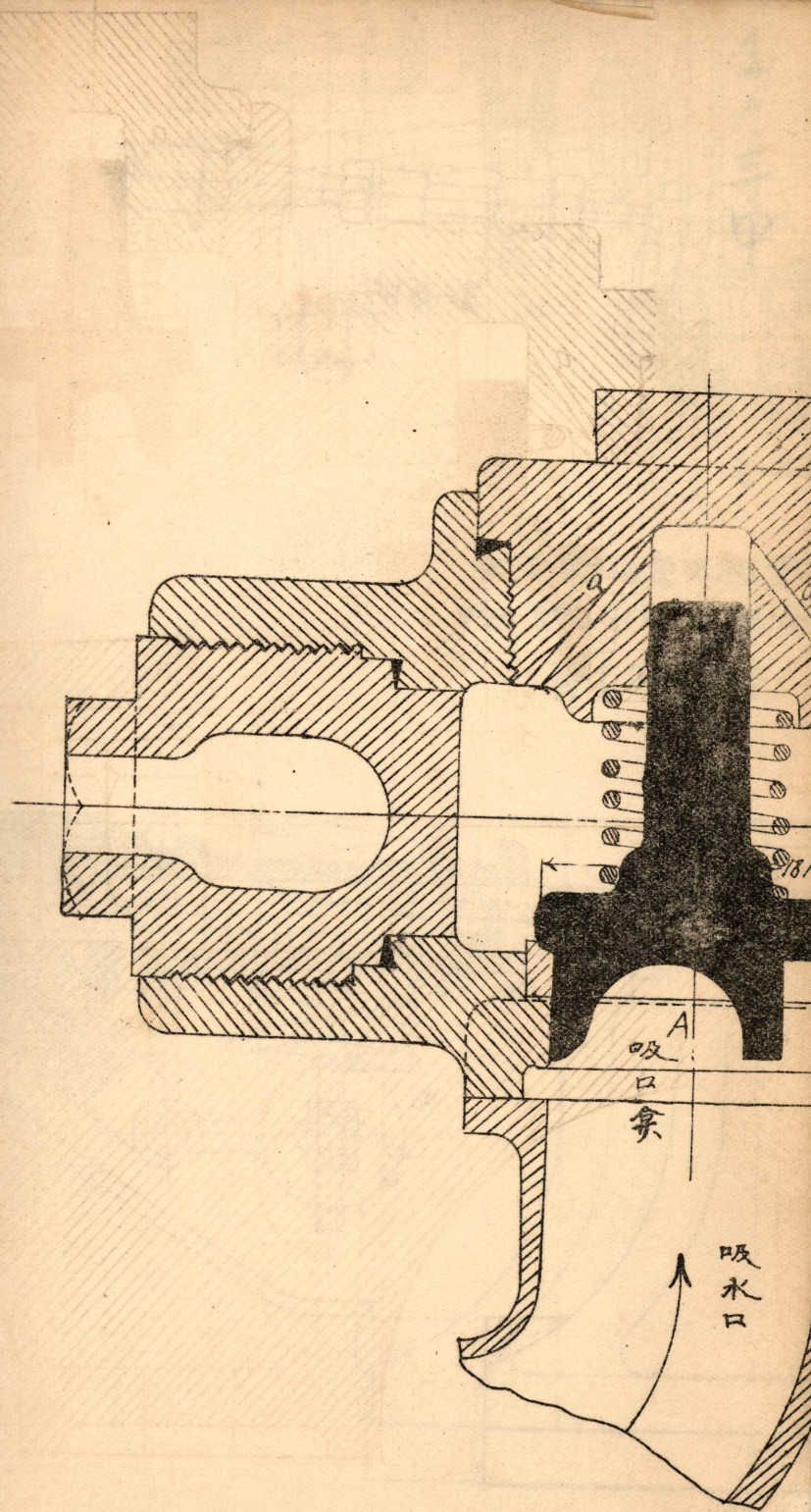
1
1
1



由二
一
七

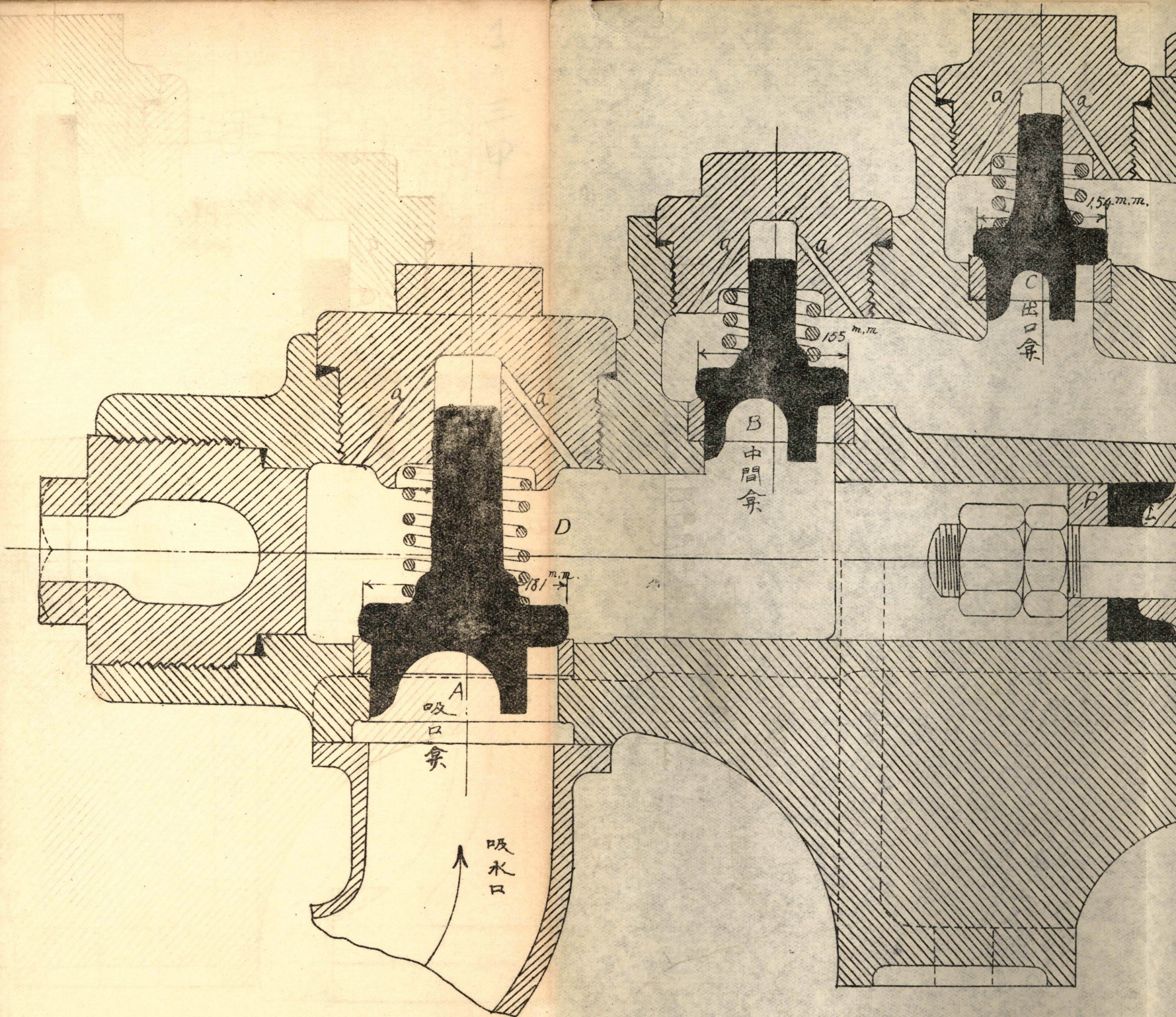


第
420

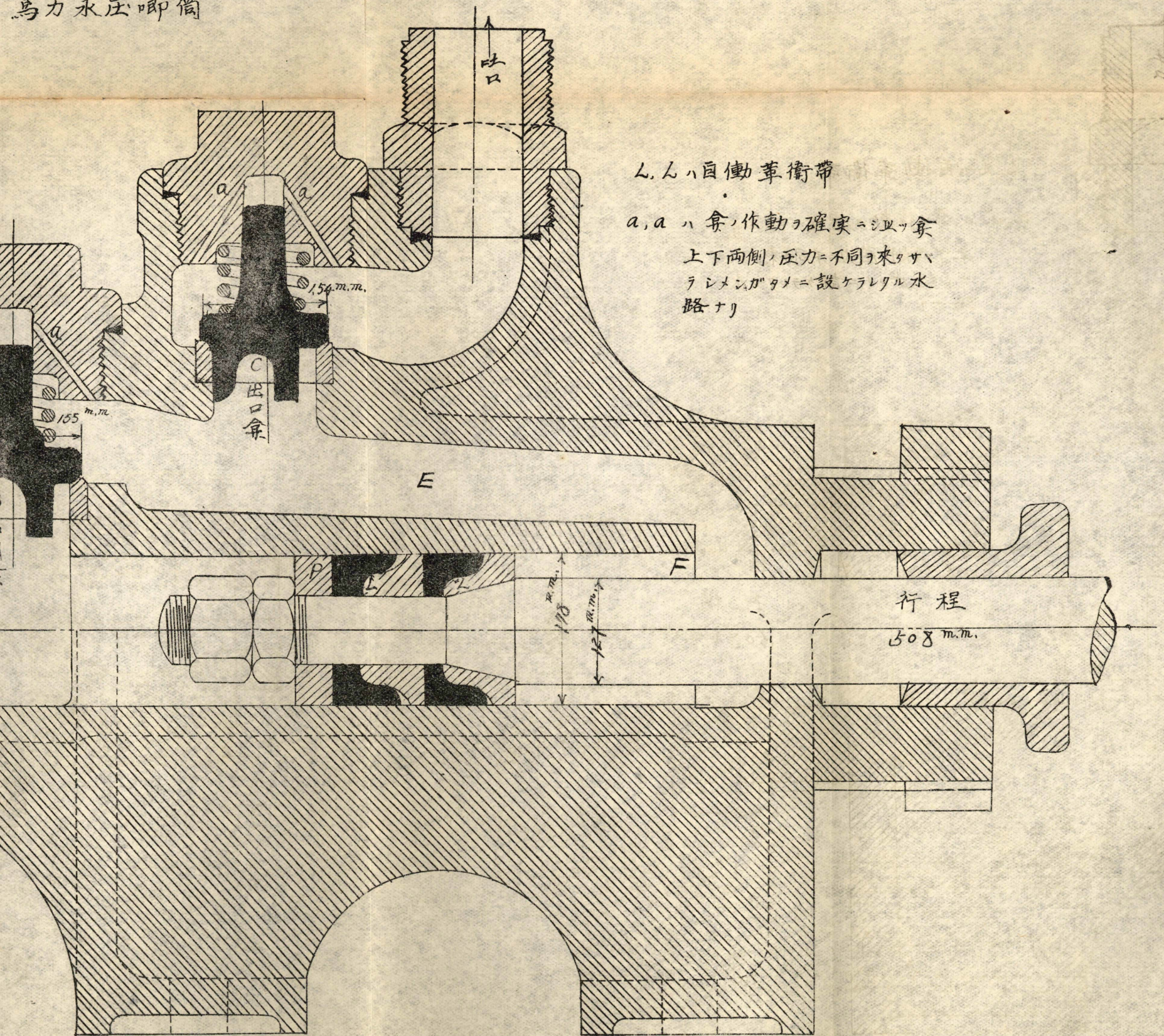


第 1 圖
024

第 1 圖, 二乙
456 馬力永壓唧筒



1 圖、二乙
馬力水圧唧筒



L, l ハ自働革衛帶

a, a ハ弁ノ作動ヲ確實ニシメツル
上下兩側ノ圧力ニ不同ヲ來タサ
ラシメンガためニ設ケラレタル水
路ナリ