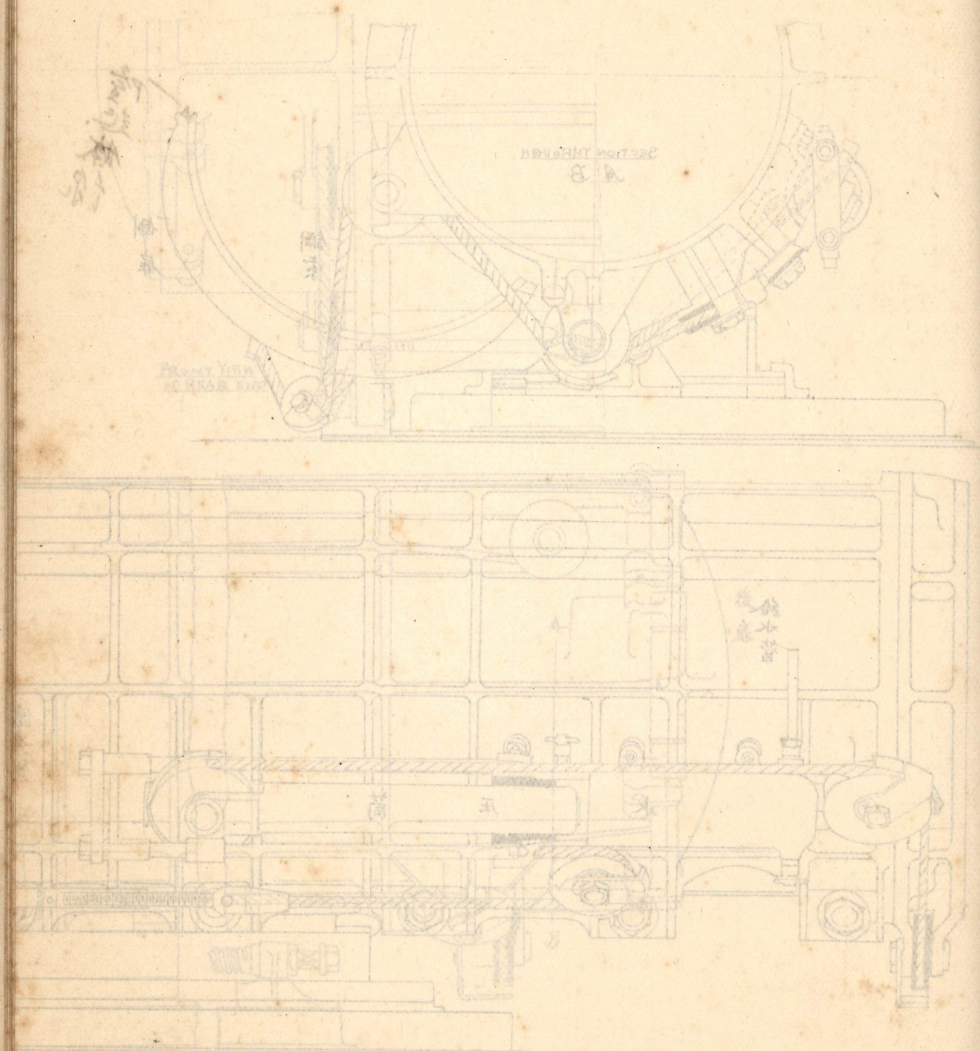
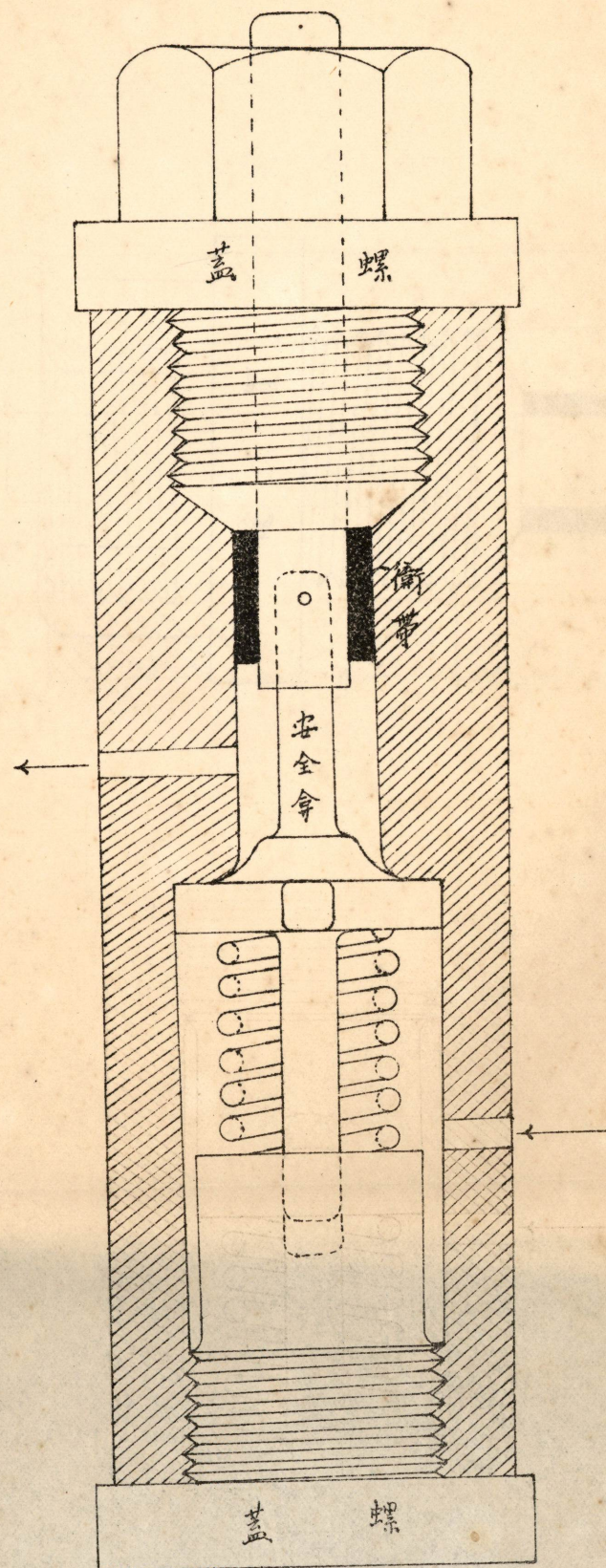
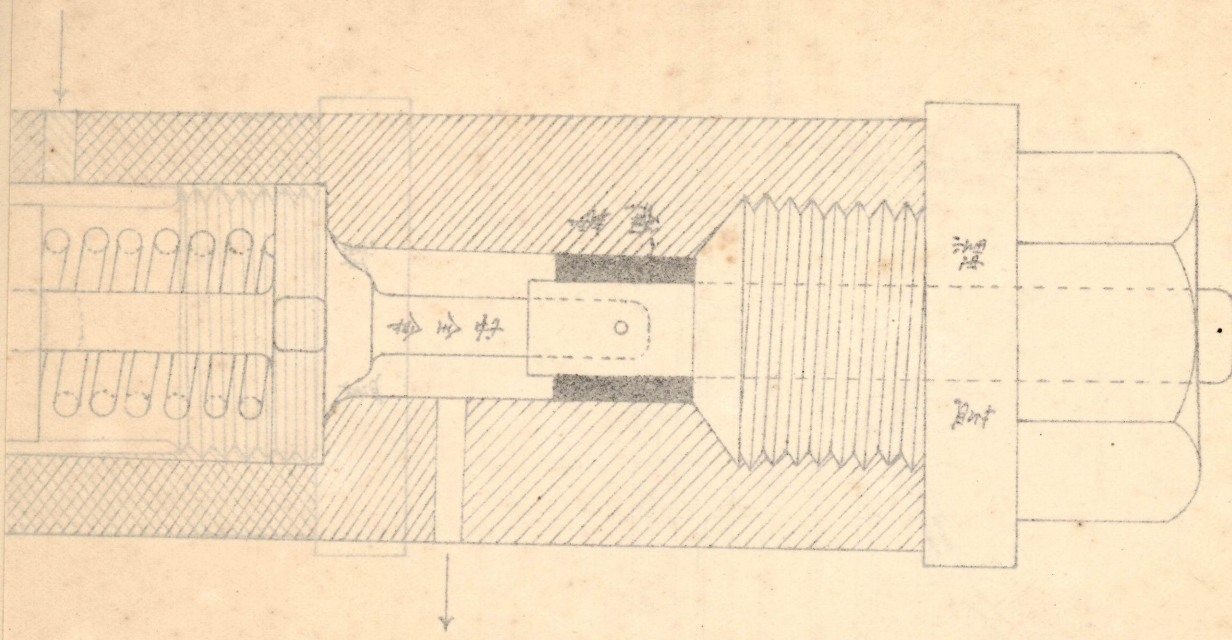


图一十八

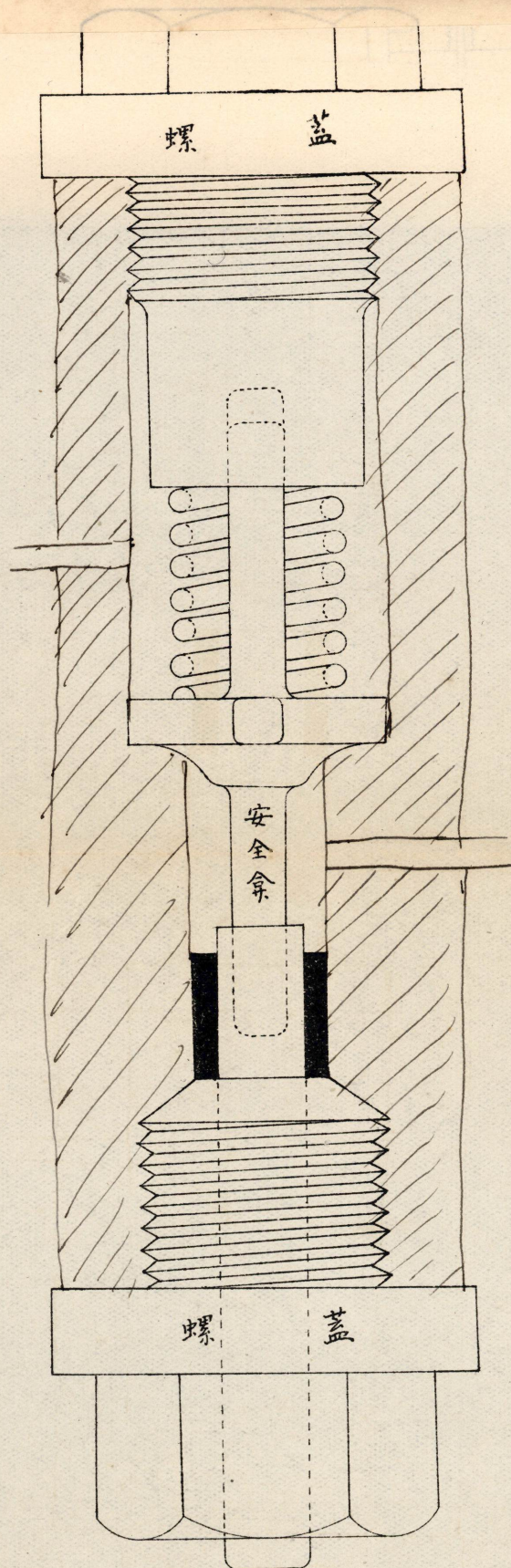


第八十二图  
安全阀





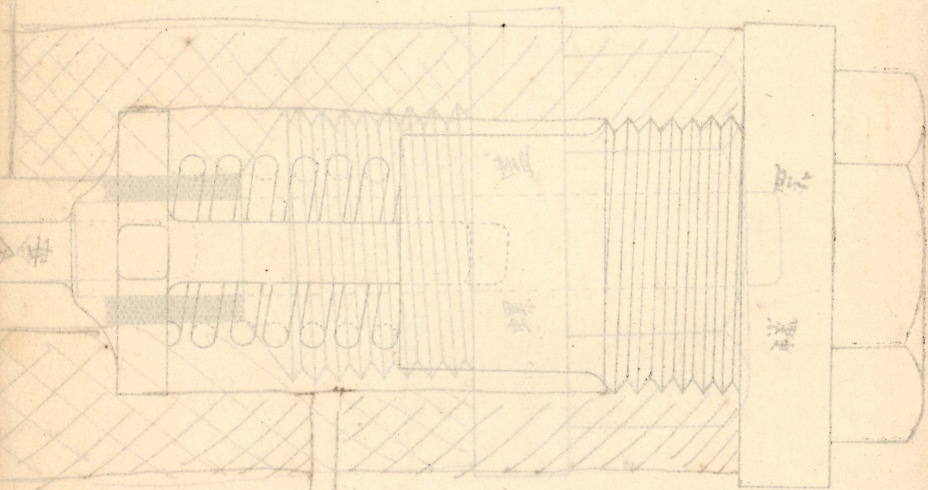
图八十八  
安全杆



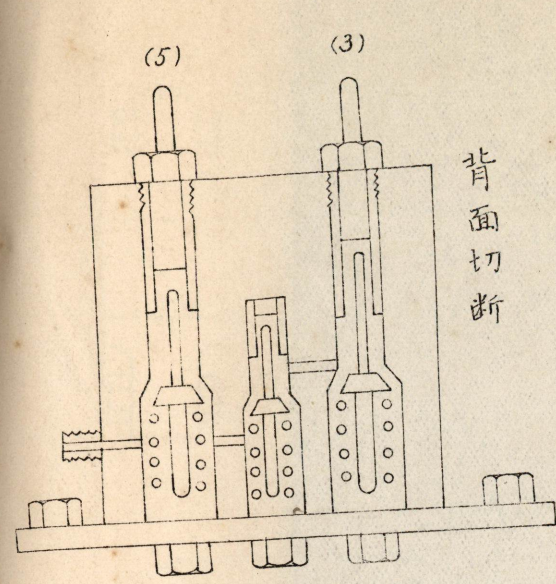
第八十二图

安全余

水ノ出  
出ノ水

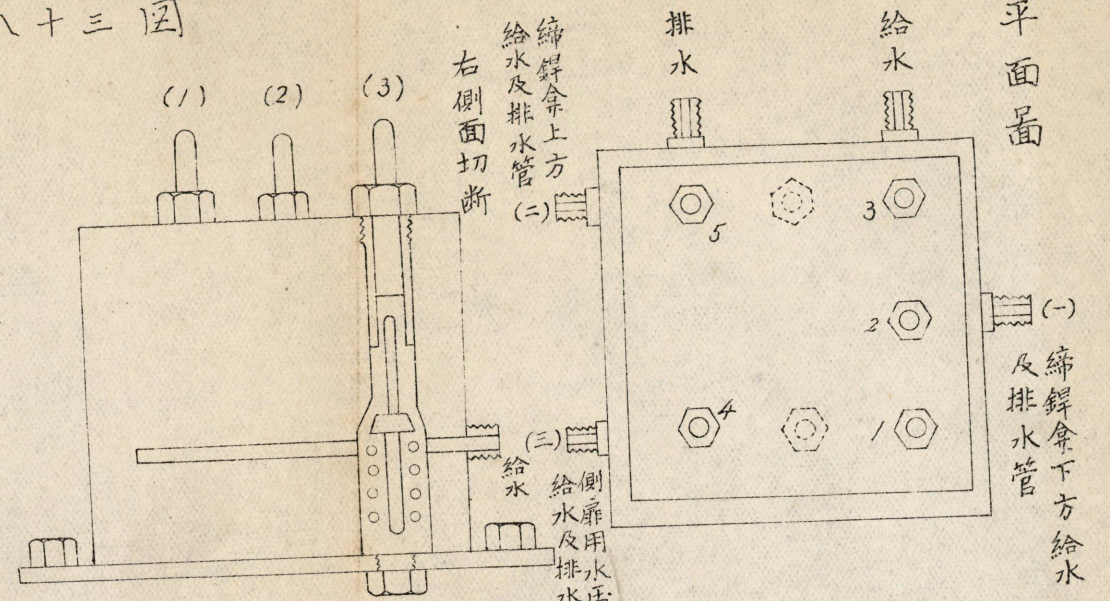


第八十三圖



背面切斷

不飯余



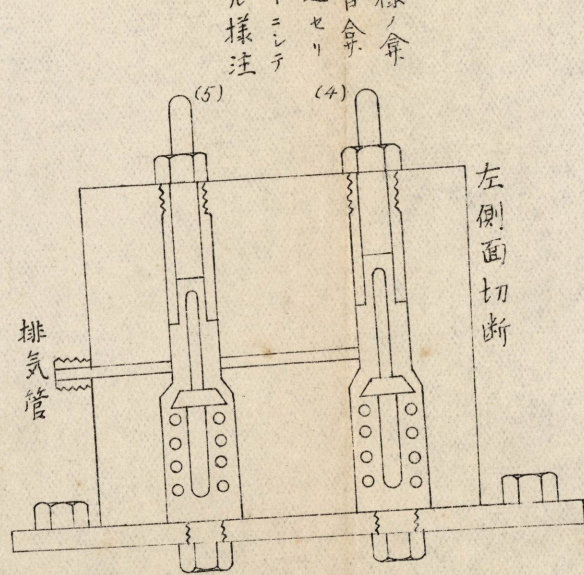
平面圖

縮錐余上方  
給水及排水管 (二)

側扉用水圧器ニ至ル  
給水及排水管 (三)

(一) 縮錐余下方給水  
及排水管

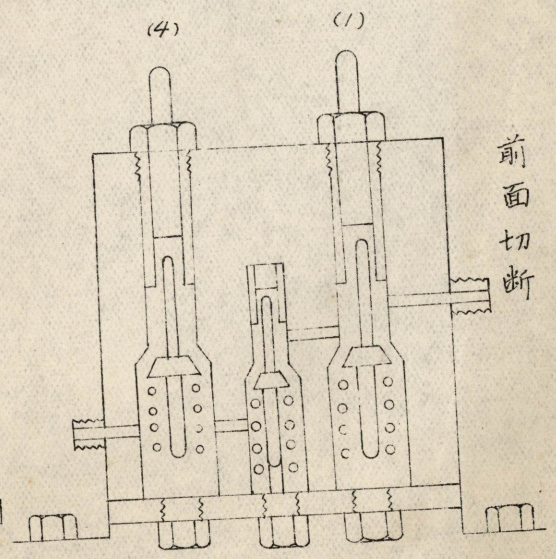
(1) (2) (3) ト全様ノ余  
ニシテ通路ハ皆余  
變ノ下ニ貫通セリ  
(二) 毛糸ヲ帶ニシテ  
堅キニ失セサル様注  
意スヘシ



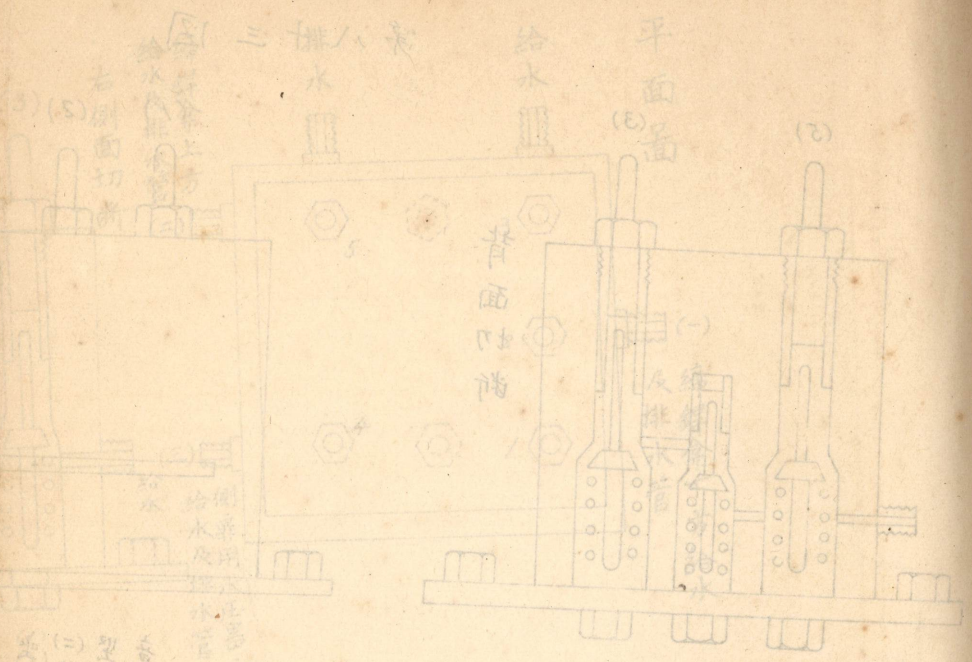
左側面切斷

排氣管

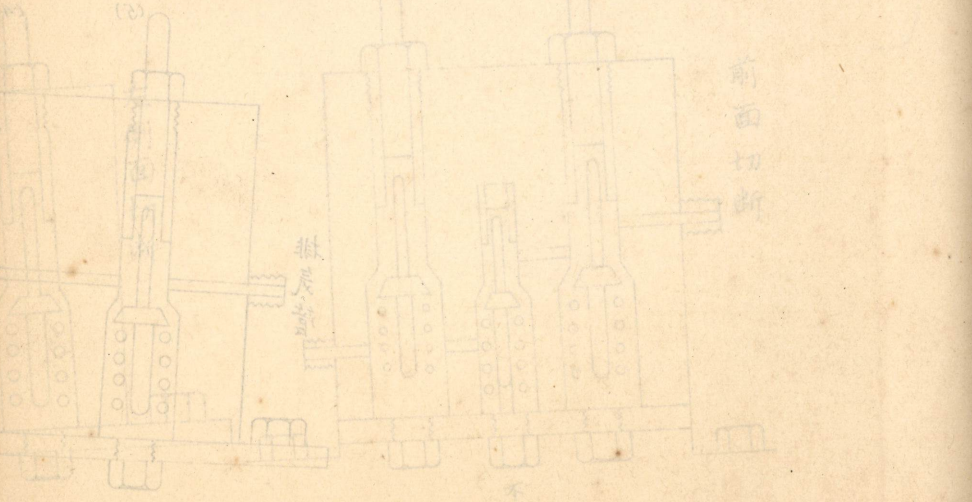
不飯余



前面切斷



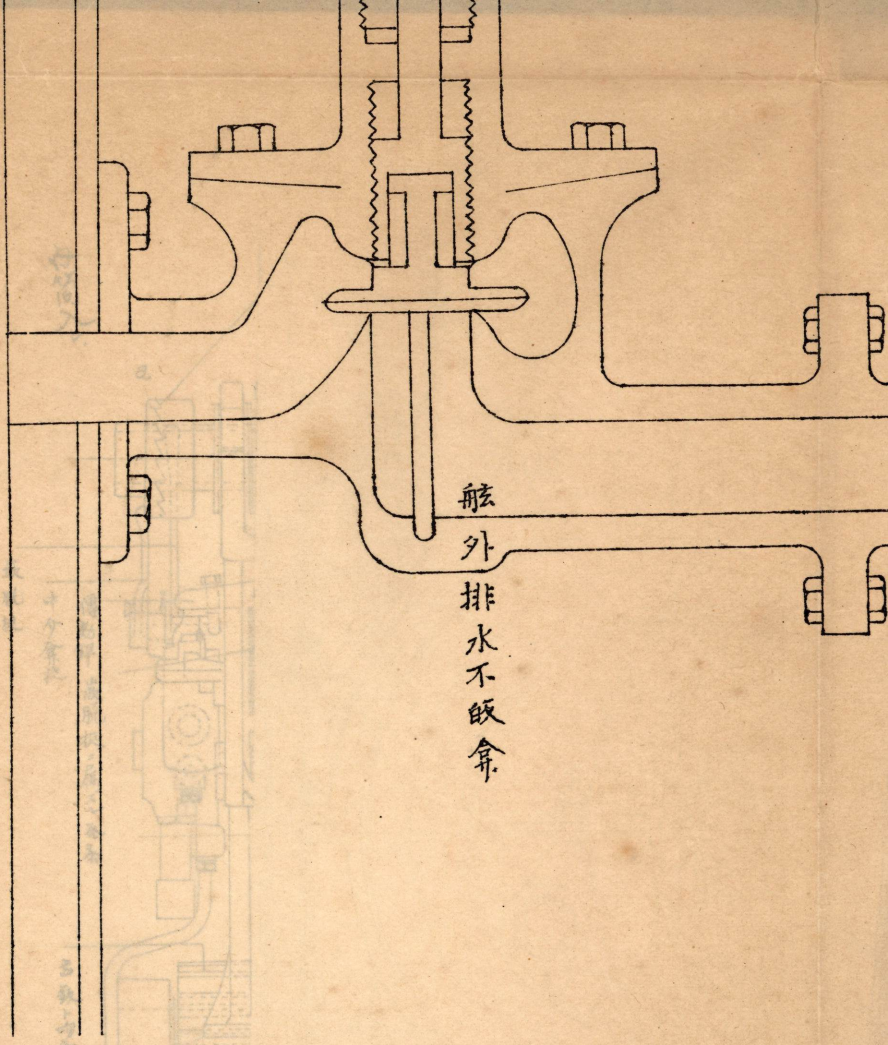
三排八  
给水  
平面  
背面  
不  
前  
面  
切  
断



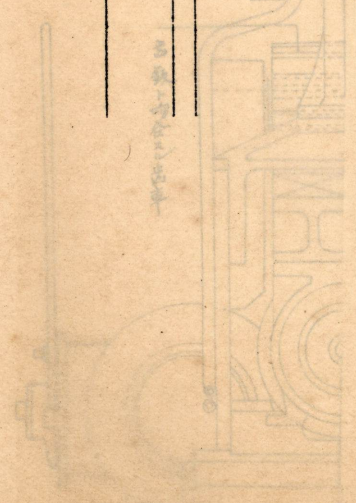
不  
前  
面  
切  
断

舷外

水

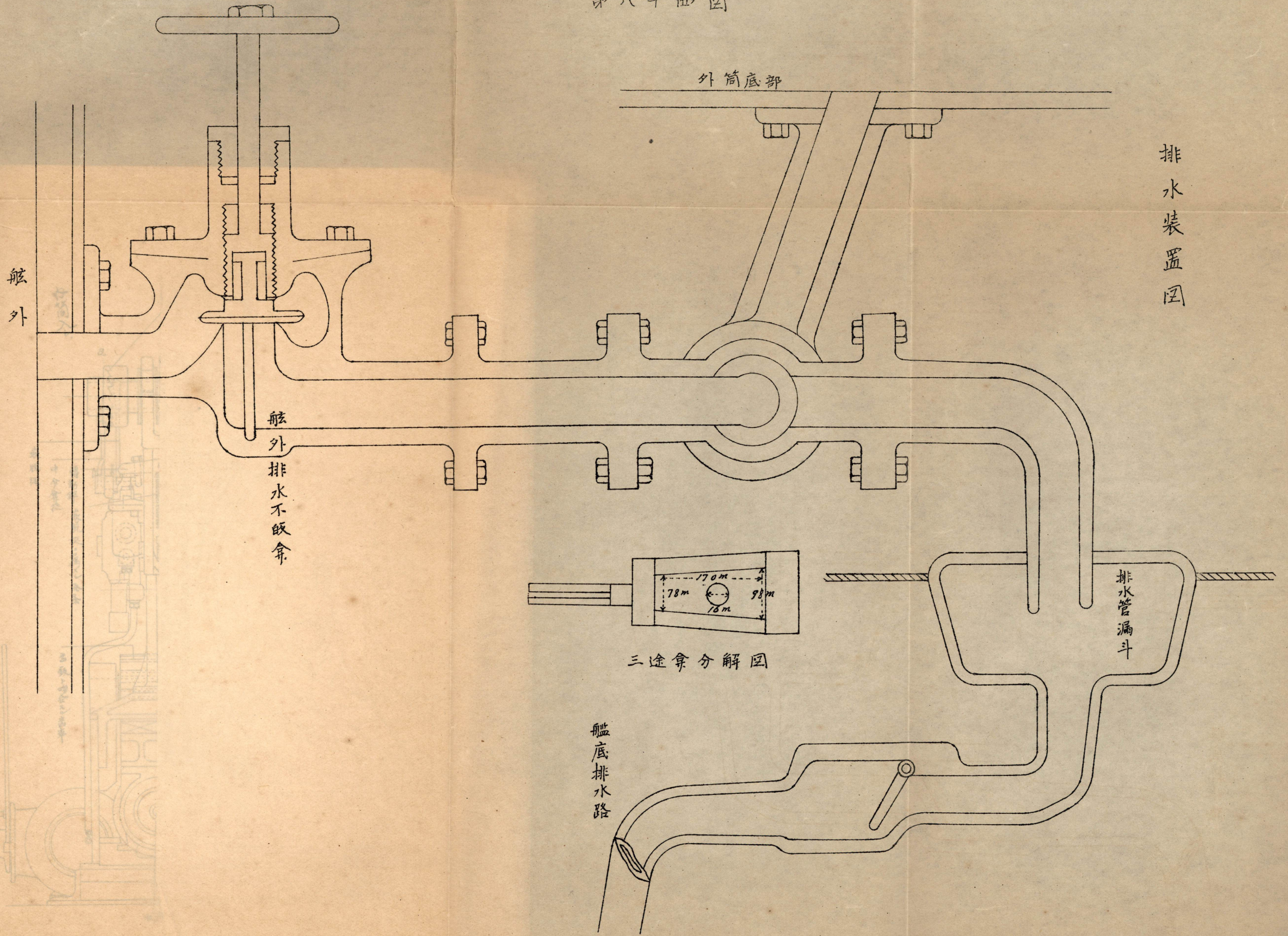


舷外  
排水  
不  
既  
余



不  
前  
面  
切  
断

排水装置图



舷外

舷外排水不返余

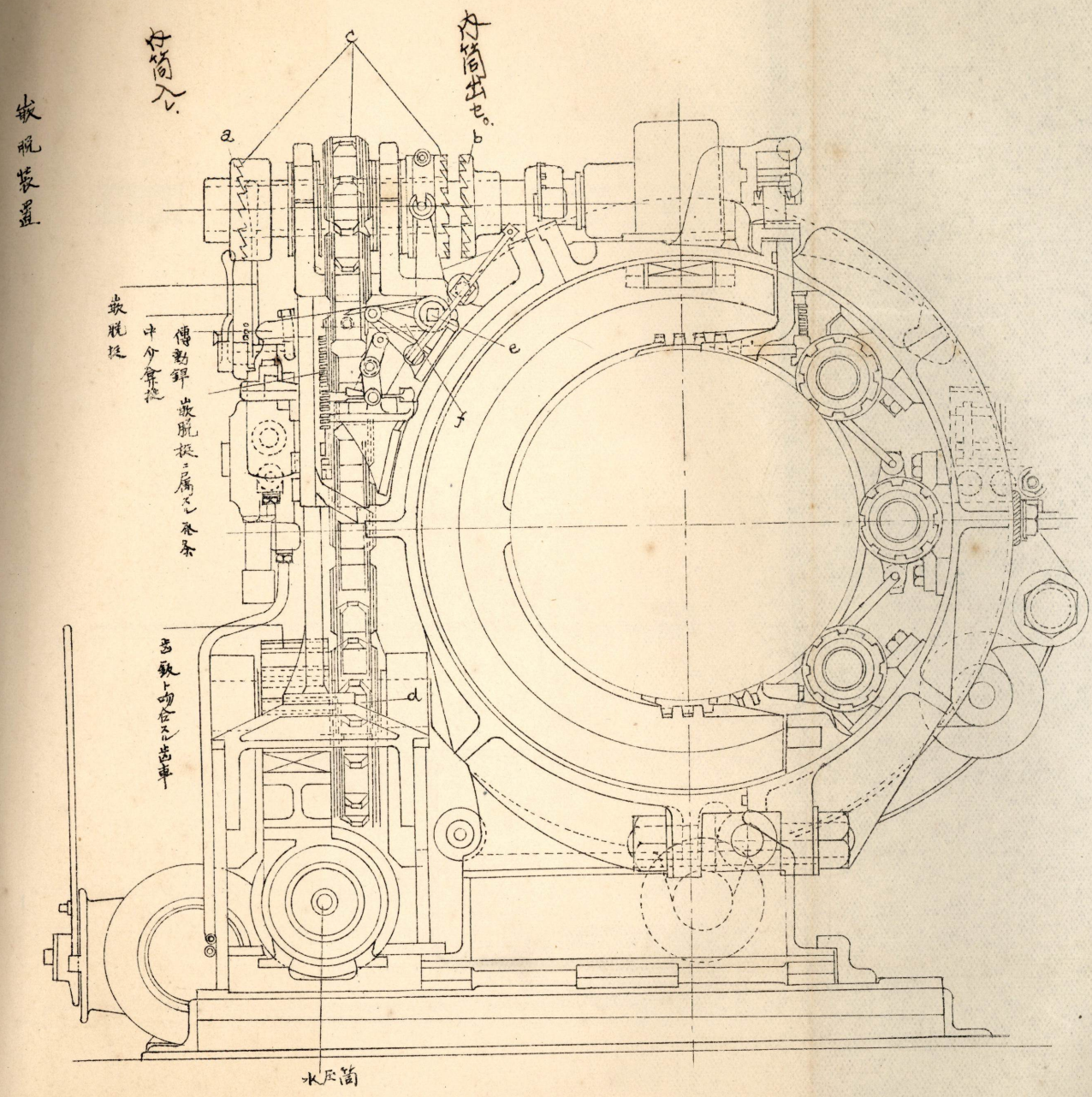
外筒底部

排水管漏斗

三途拿分解图

船底排水路

第八十五圖



嵌脫裝置

汽筒入口

汽筒出口

嵌脫

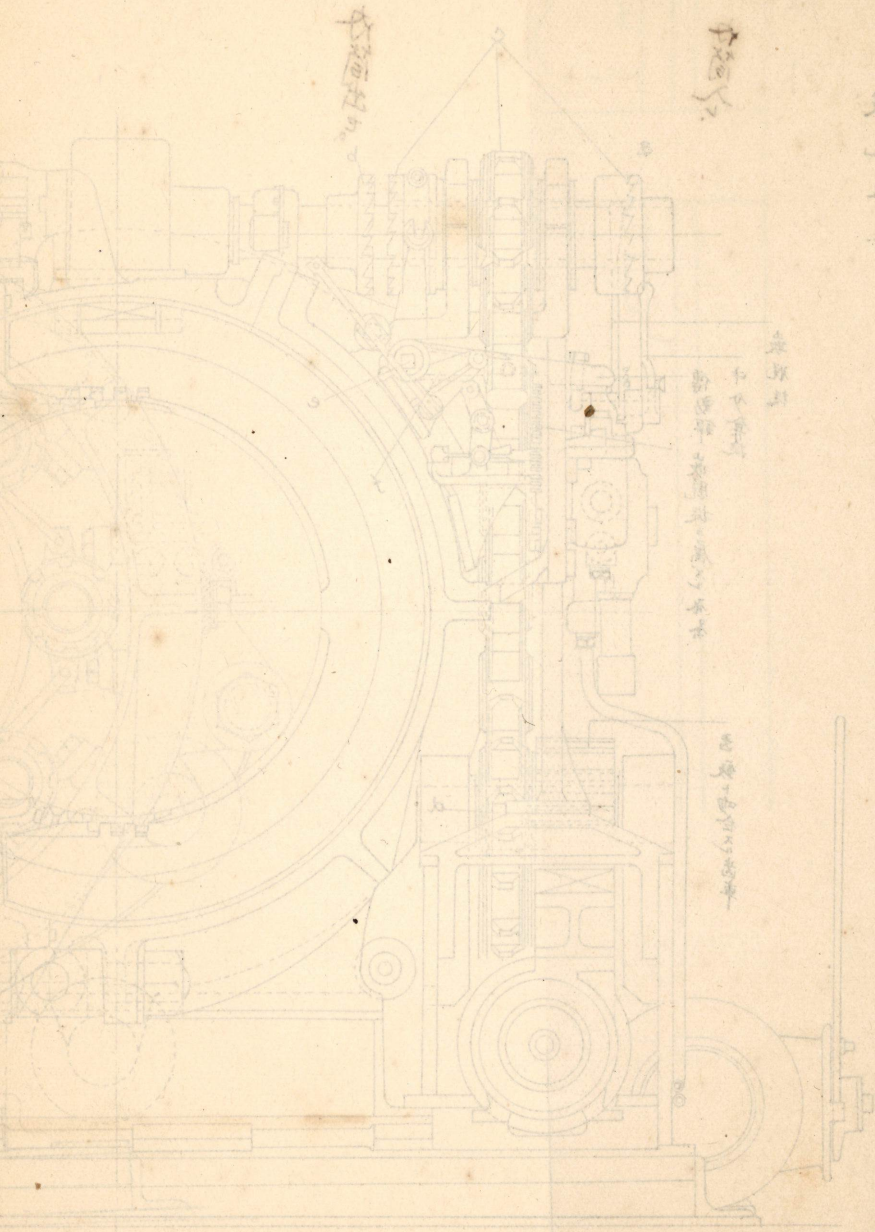
傳動錘  
嵌脫之屬之各條

汽缸上切之各車

水壓筒

汽

汽  
缸  
水  
下  
切  
各  
車



汽缸

汽缸蓋

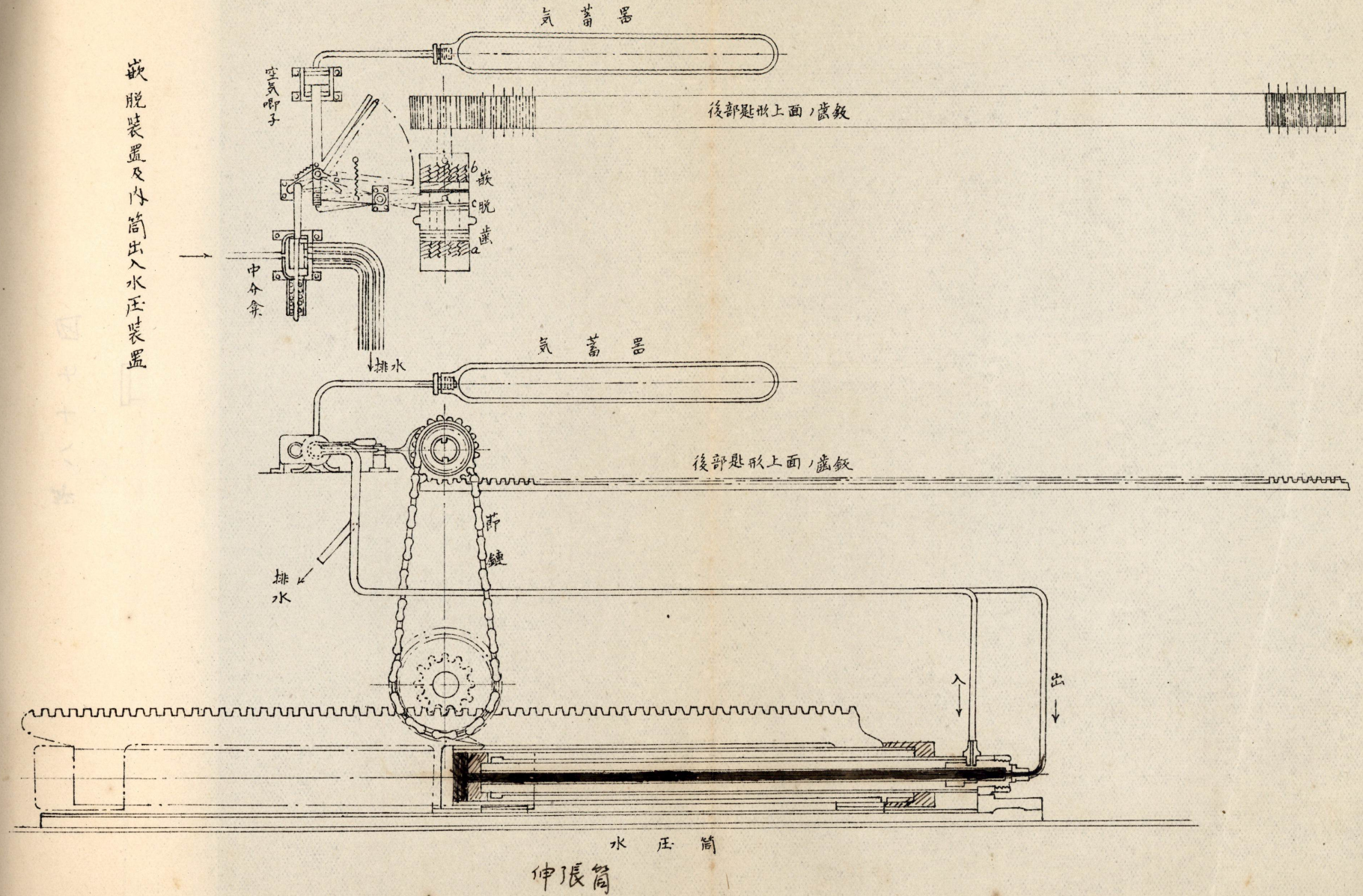
汽缸蓋

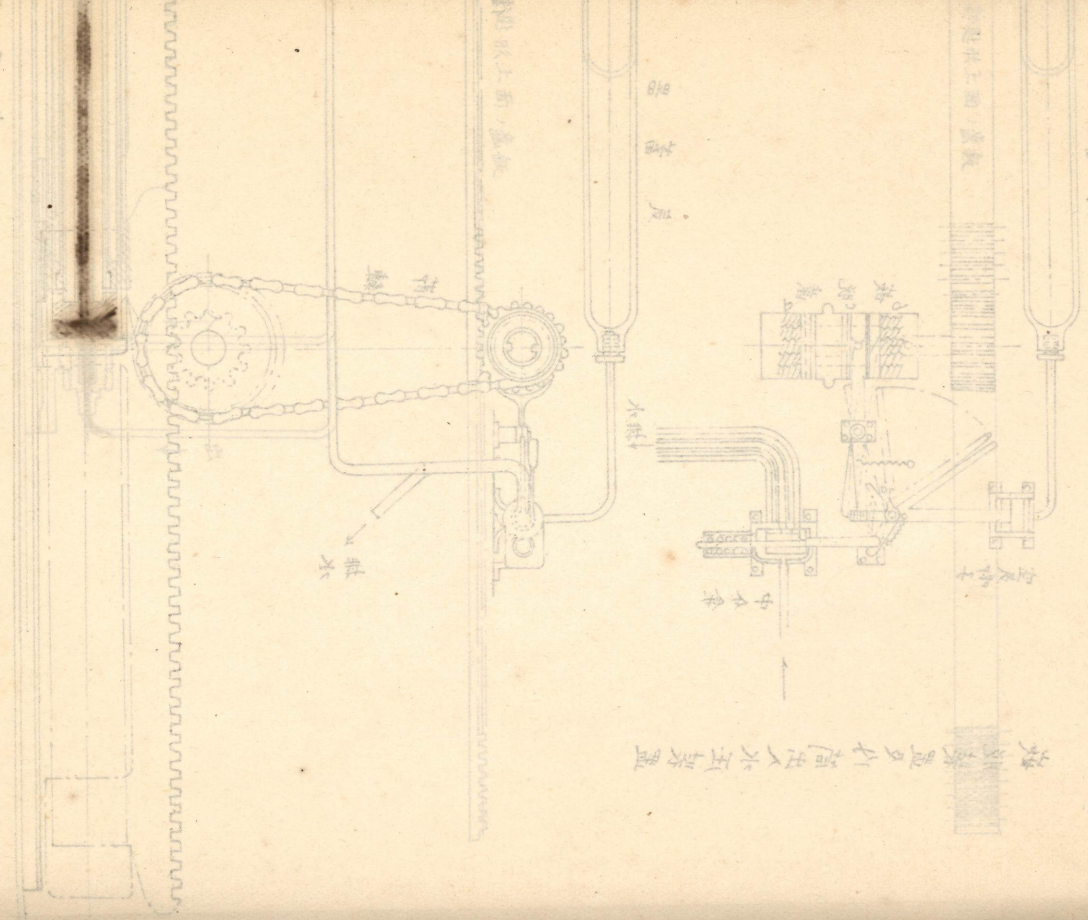
汽缸蓋

汽缸蓋

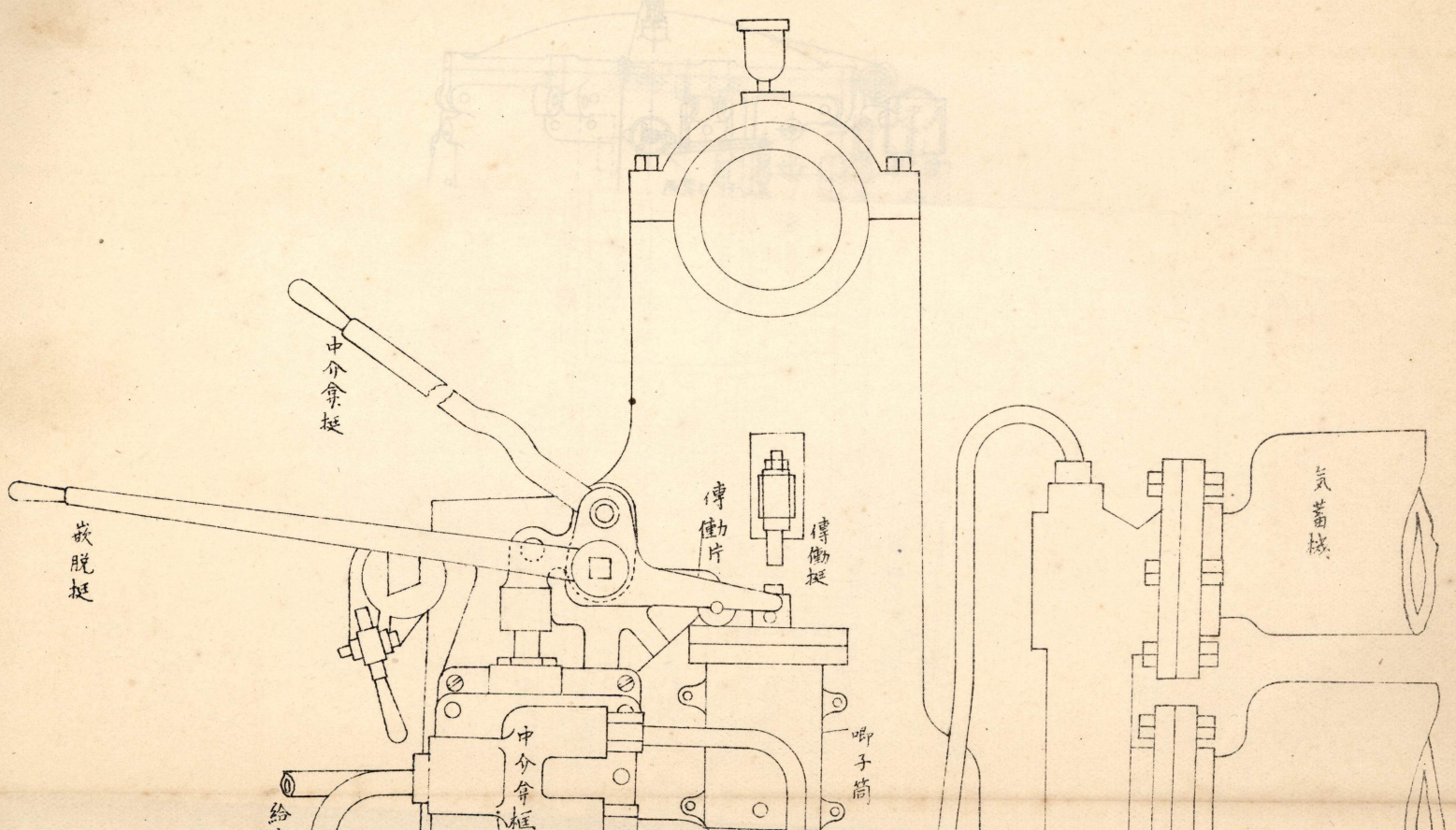
汽缸

嵌脫裝置及內筒出入水壓裝置



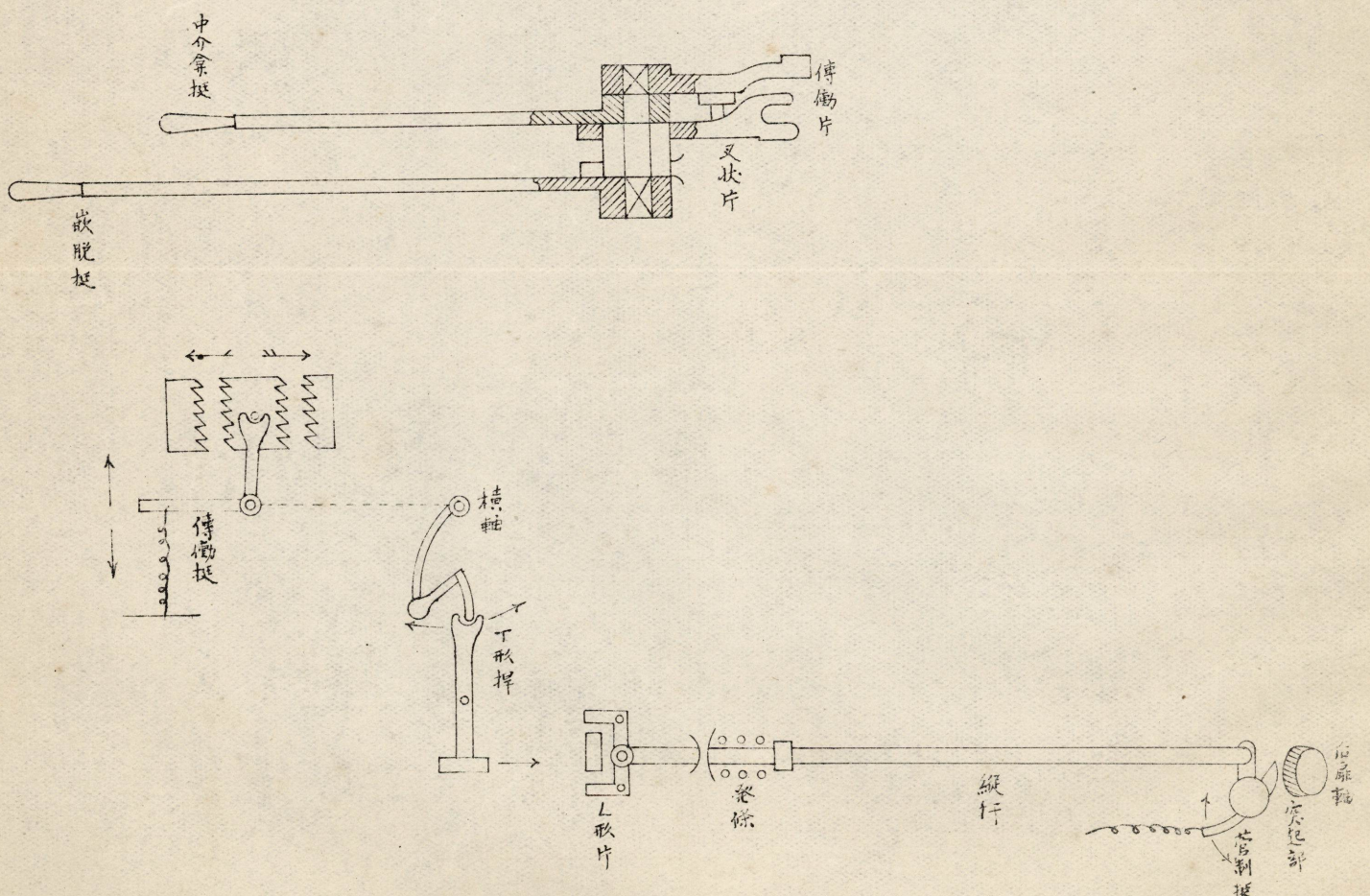
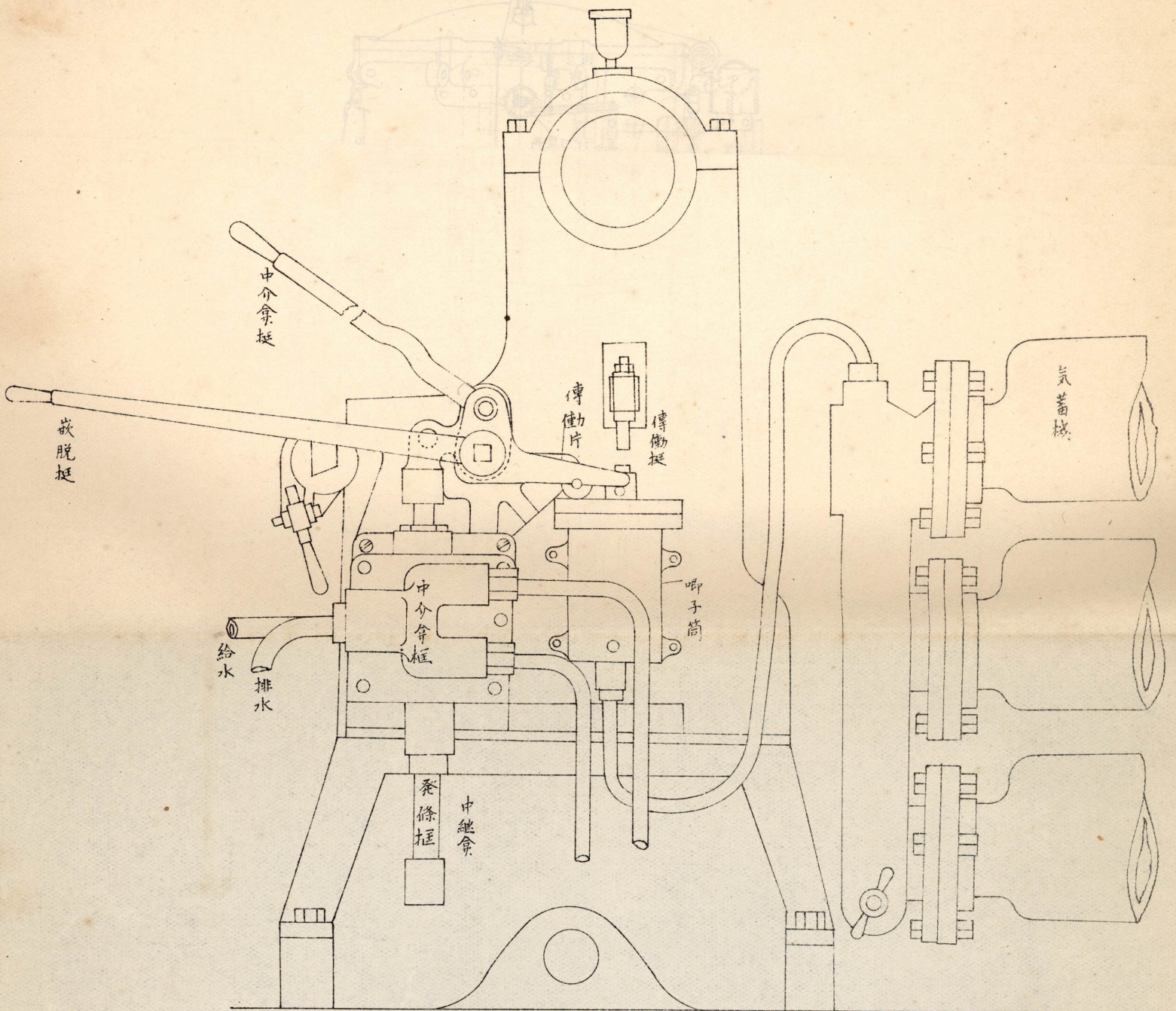


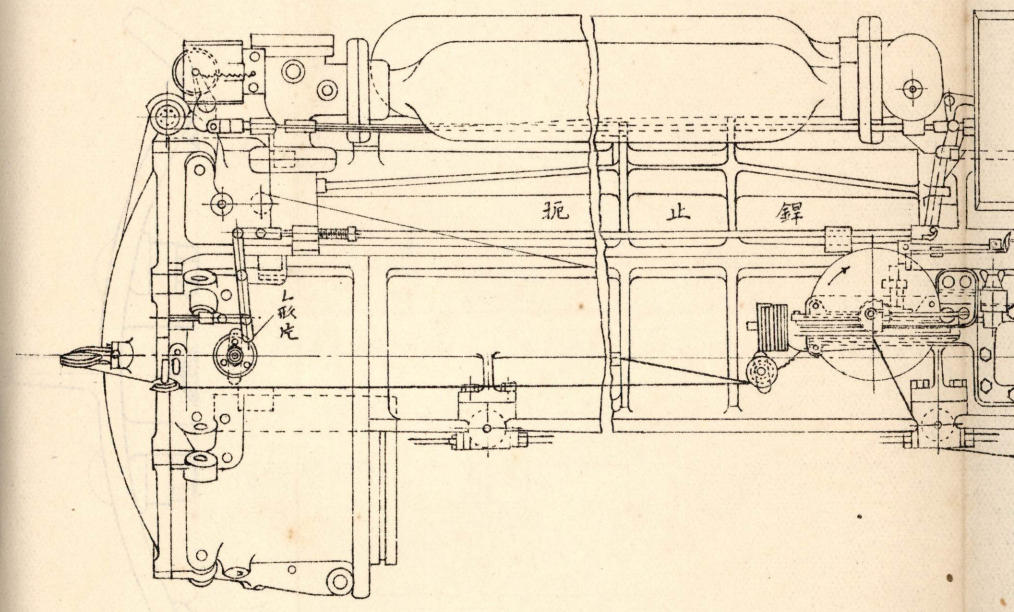
第八十七圖



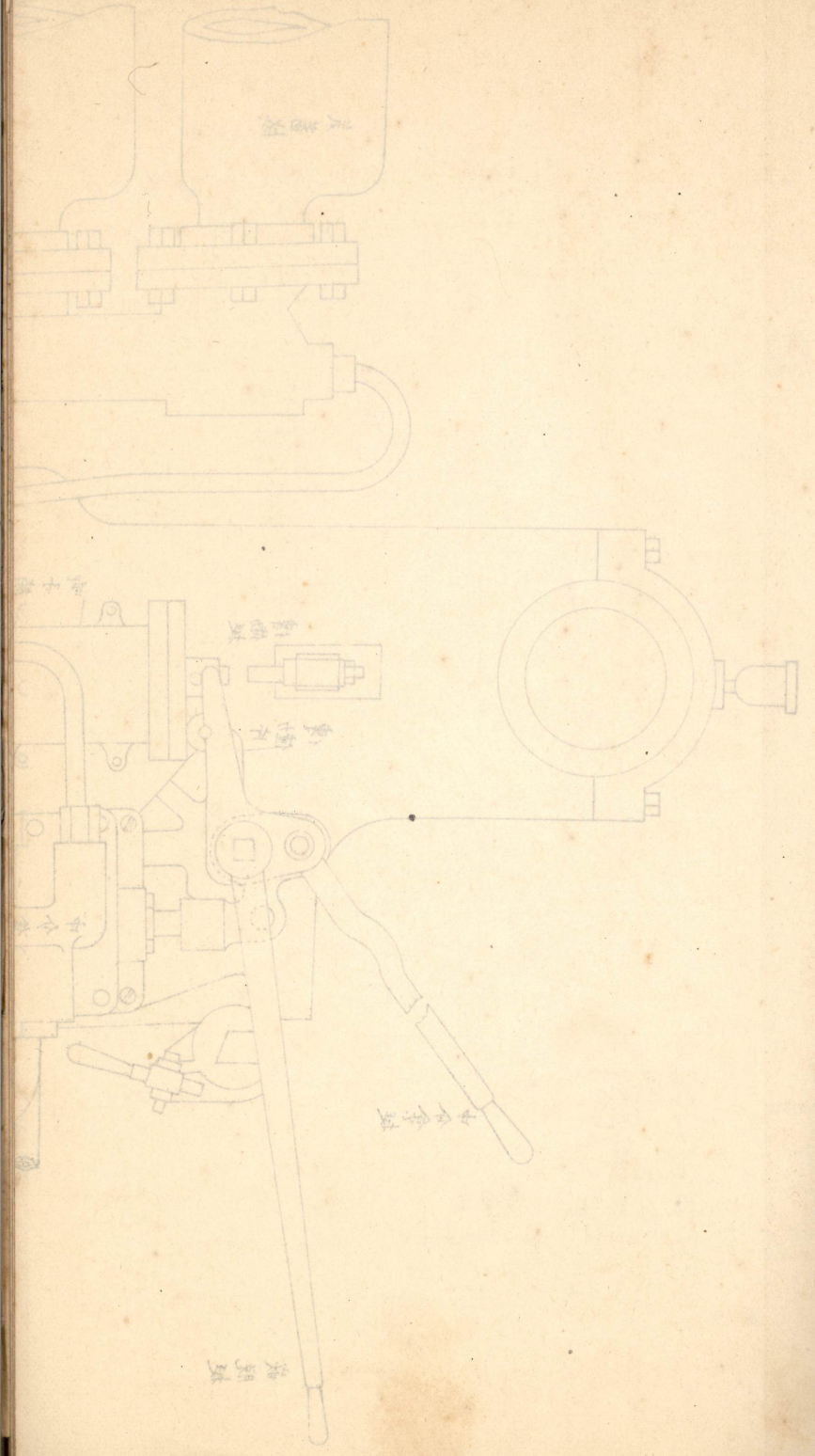


第八十七圖

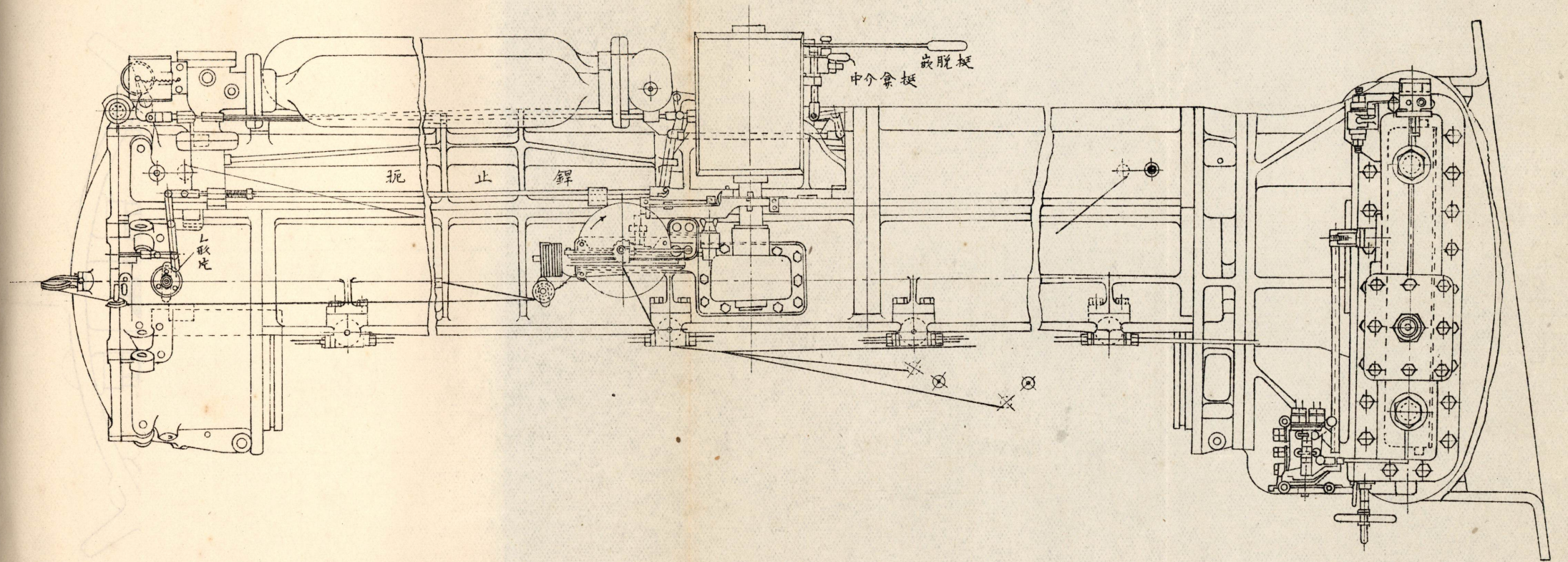




圖二十八

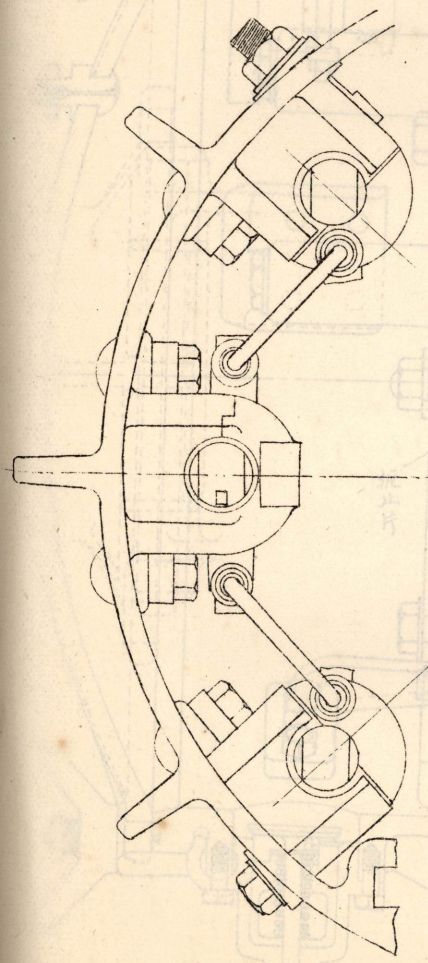
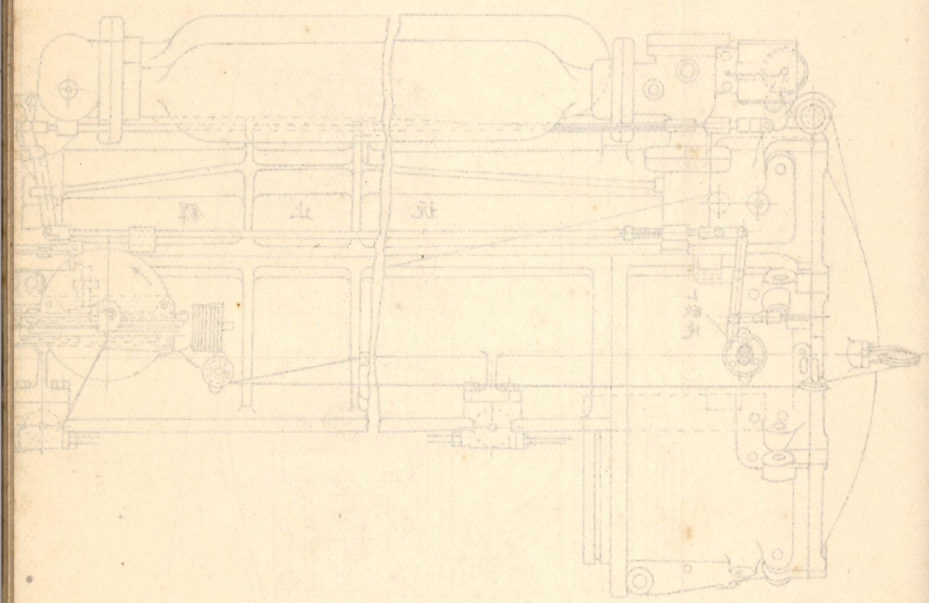


第八十八圖

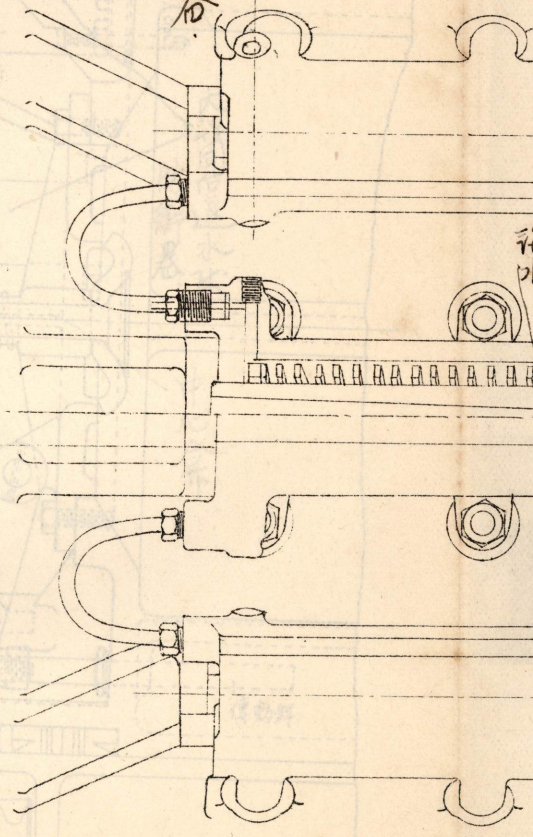


第八十八圖

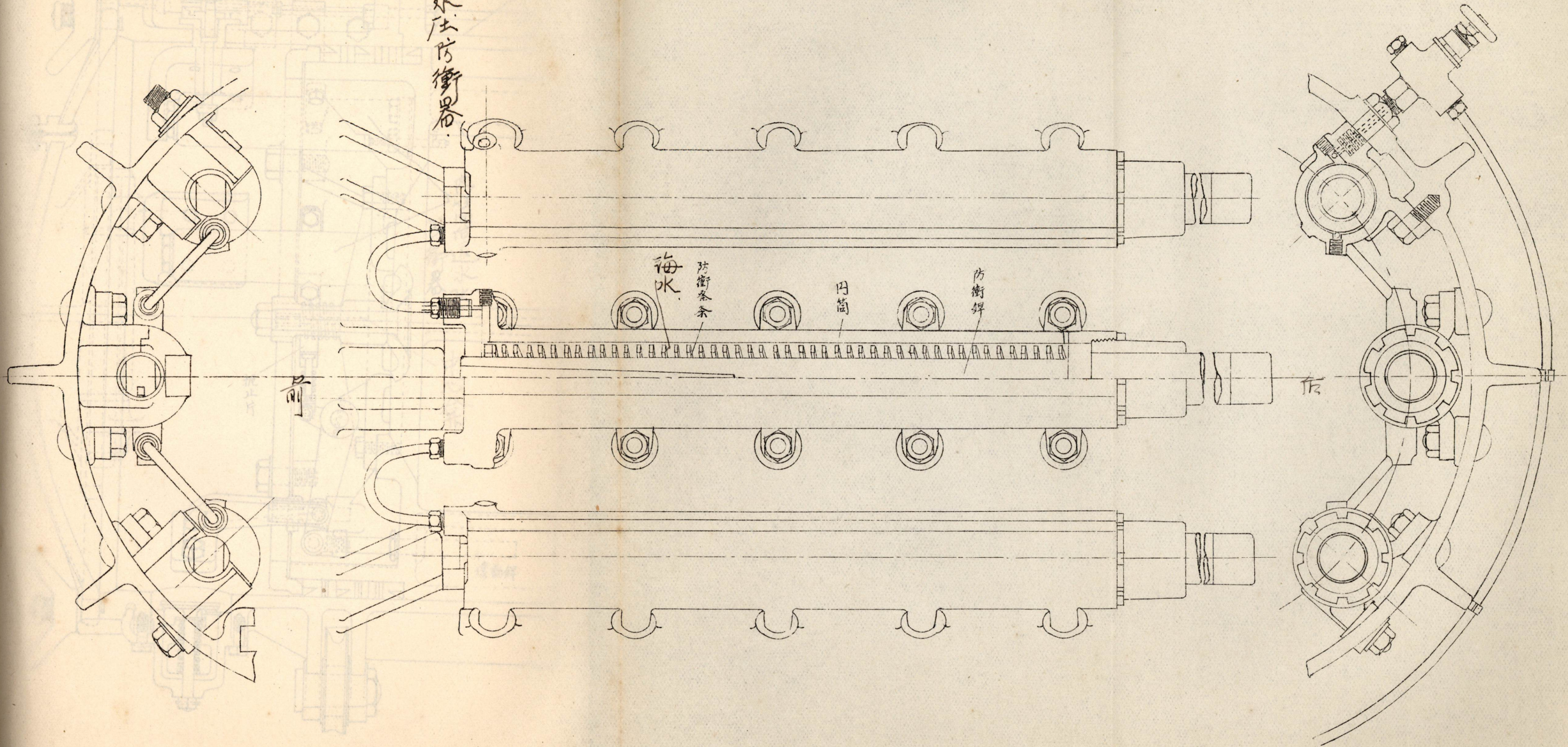
外筒前進水缸防衝器



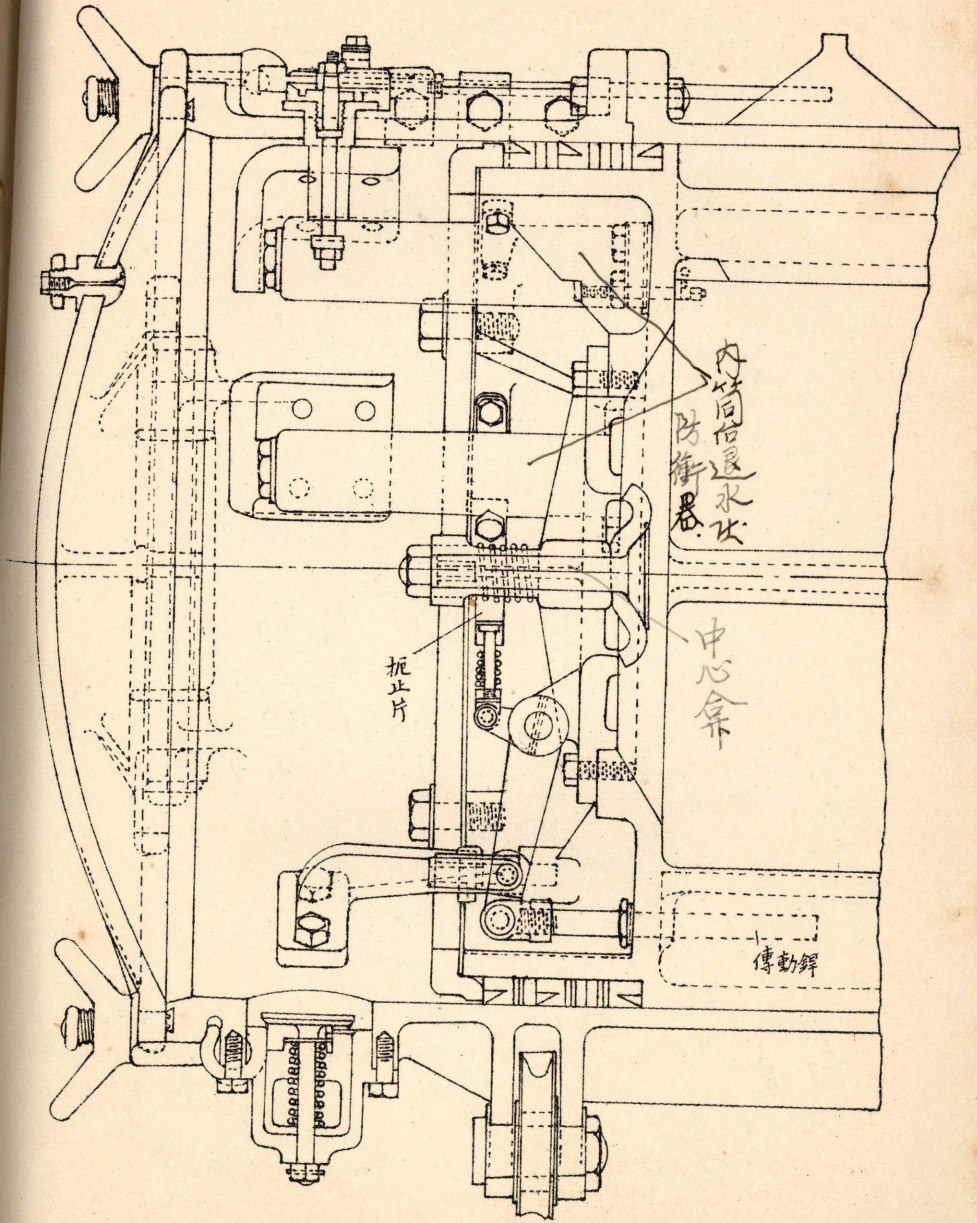
前



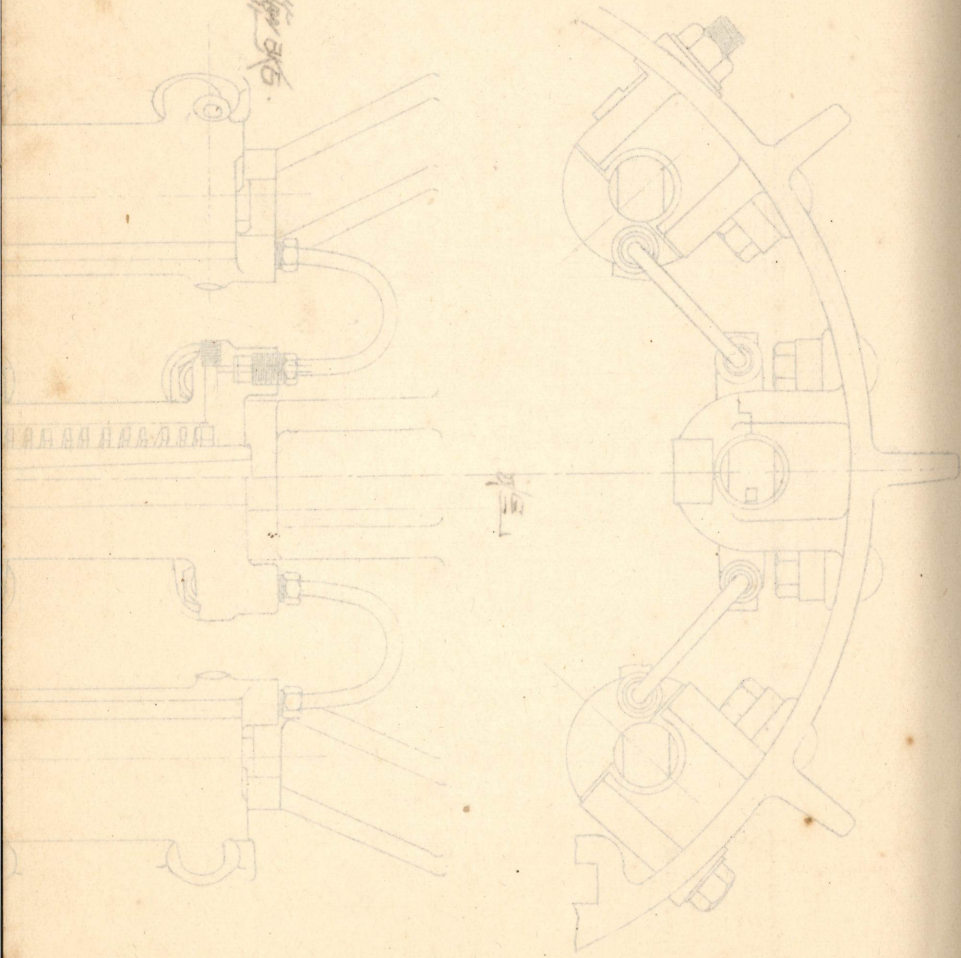
外筒前進水法防衝器

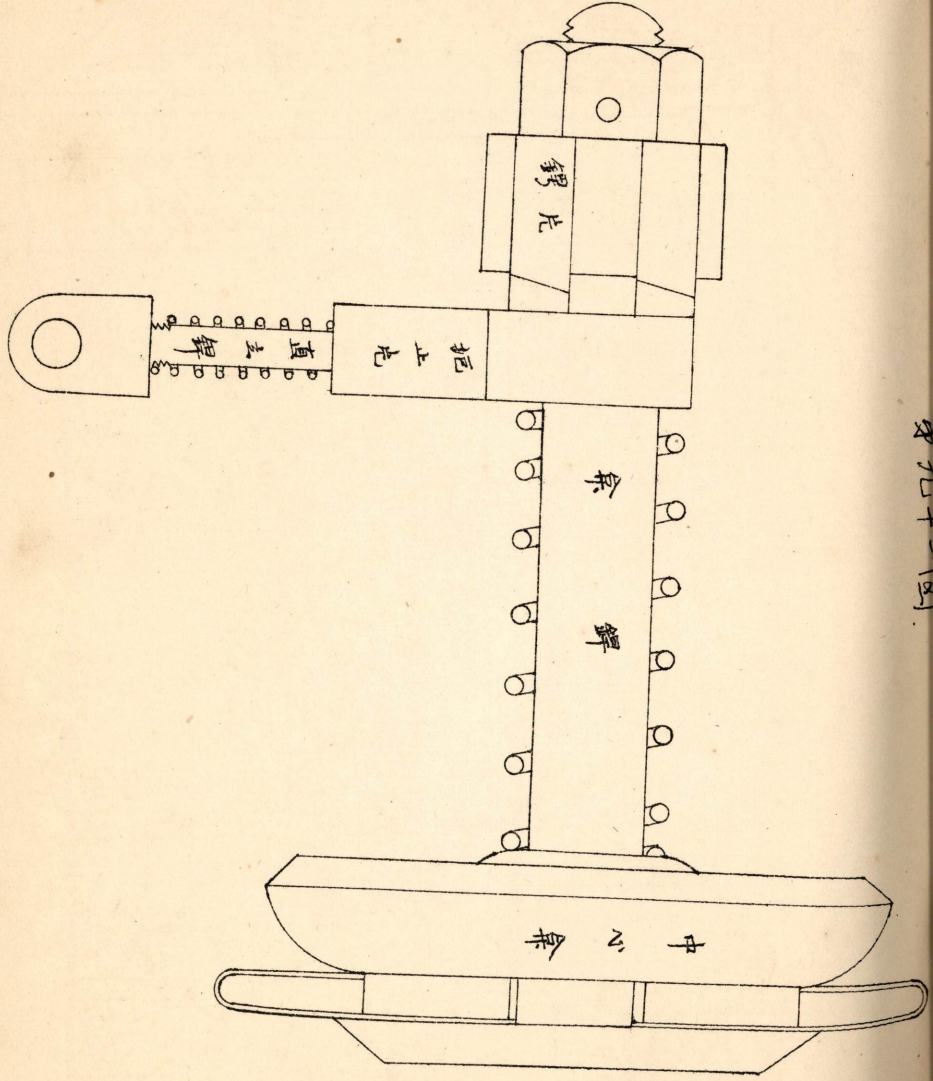


第九十圖

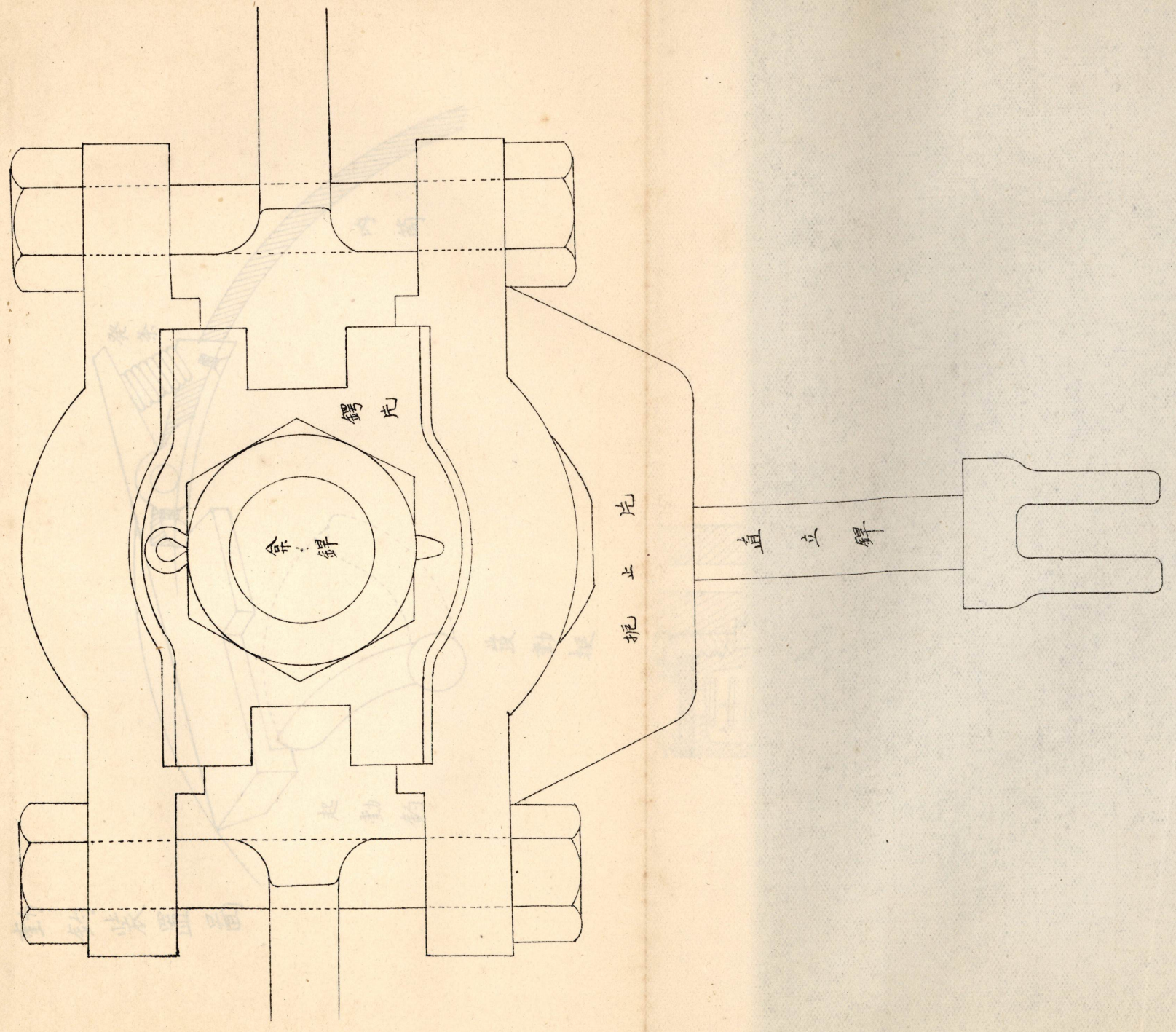


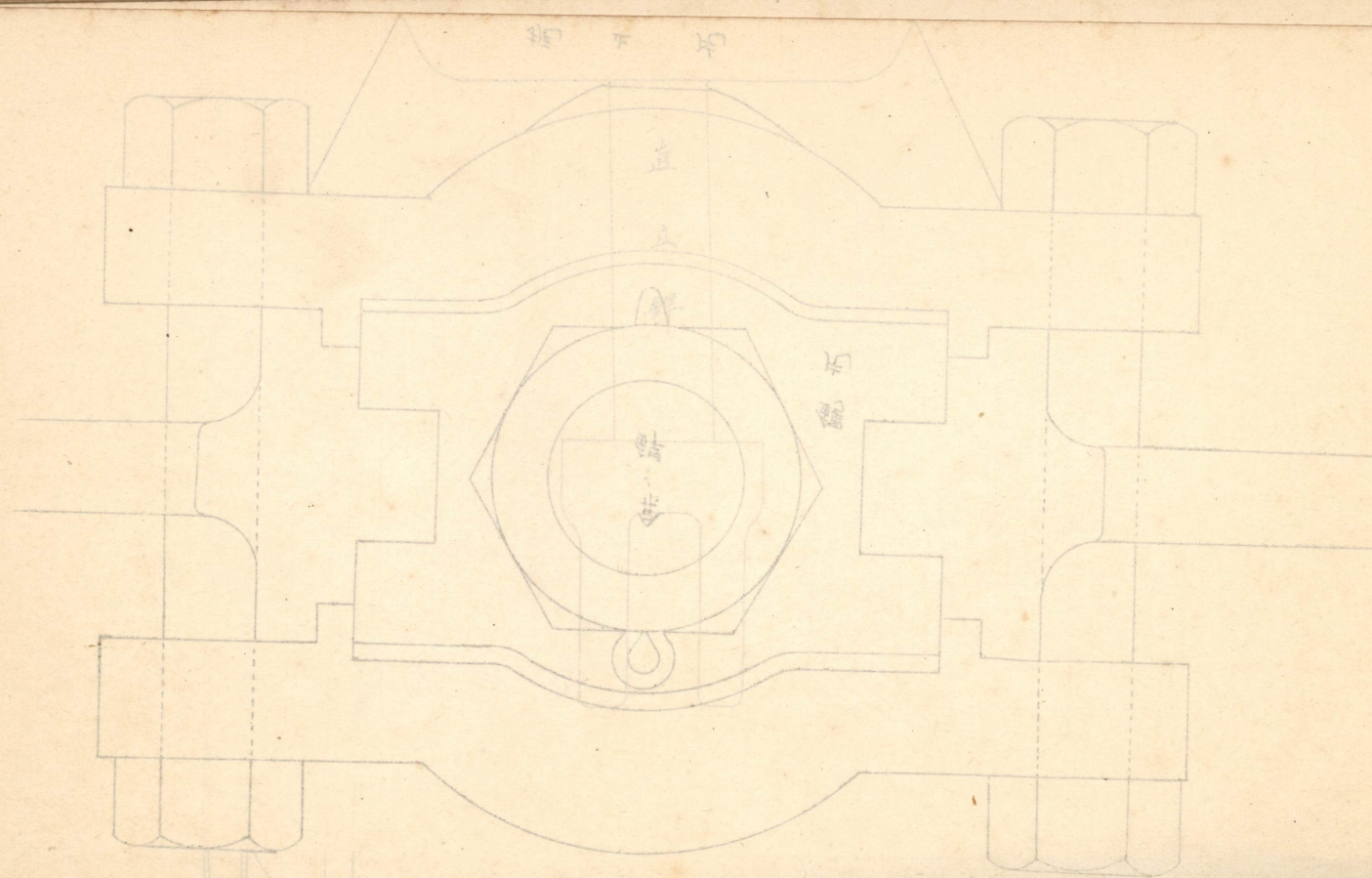
內管倍還水次





第九十二圖

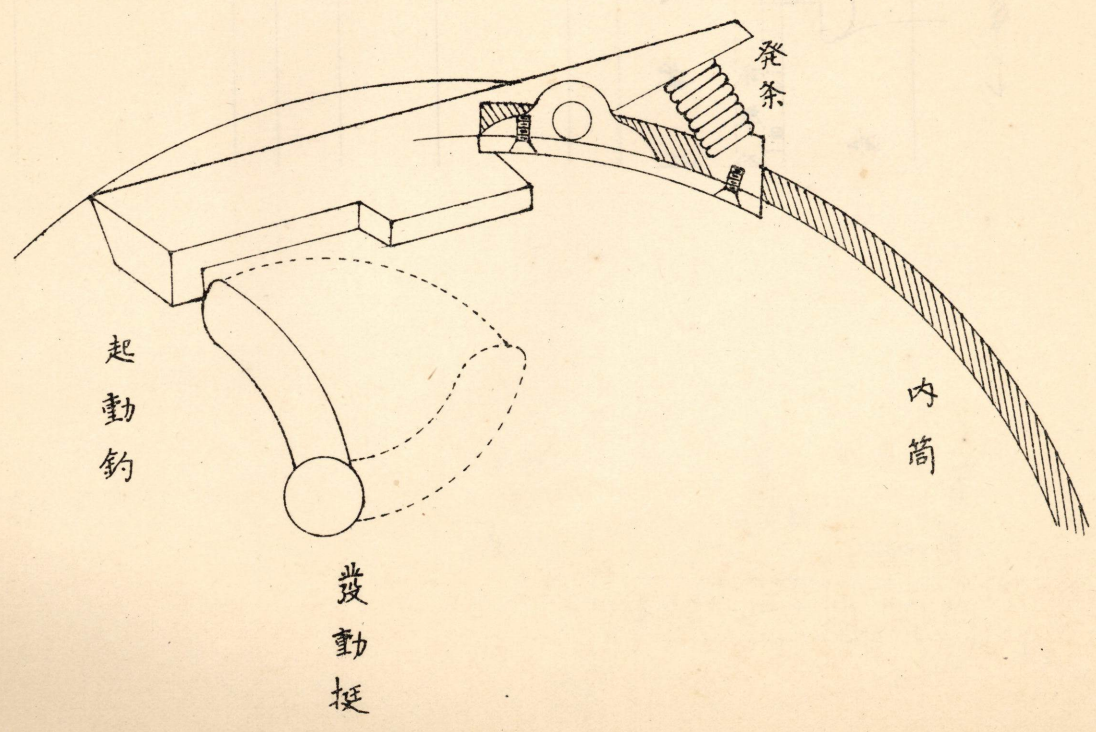




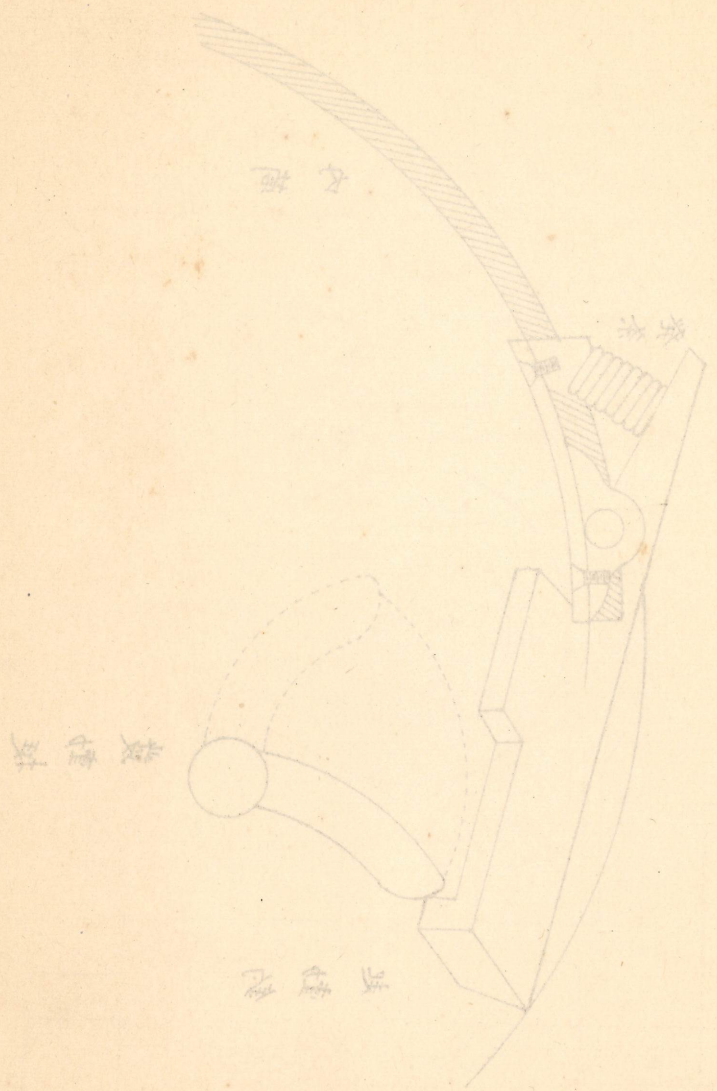
圖九十三

第九十三圖

起動鈞裝置圖

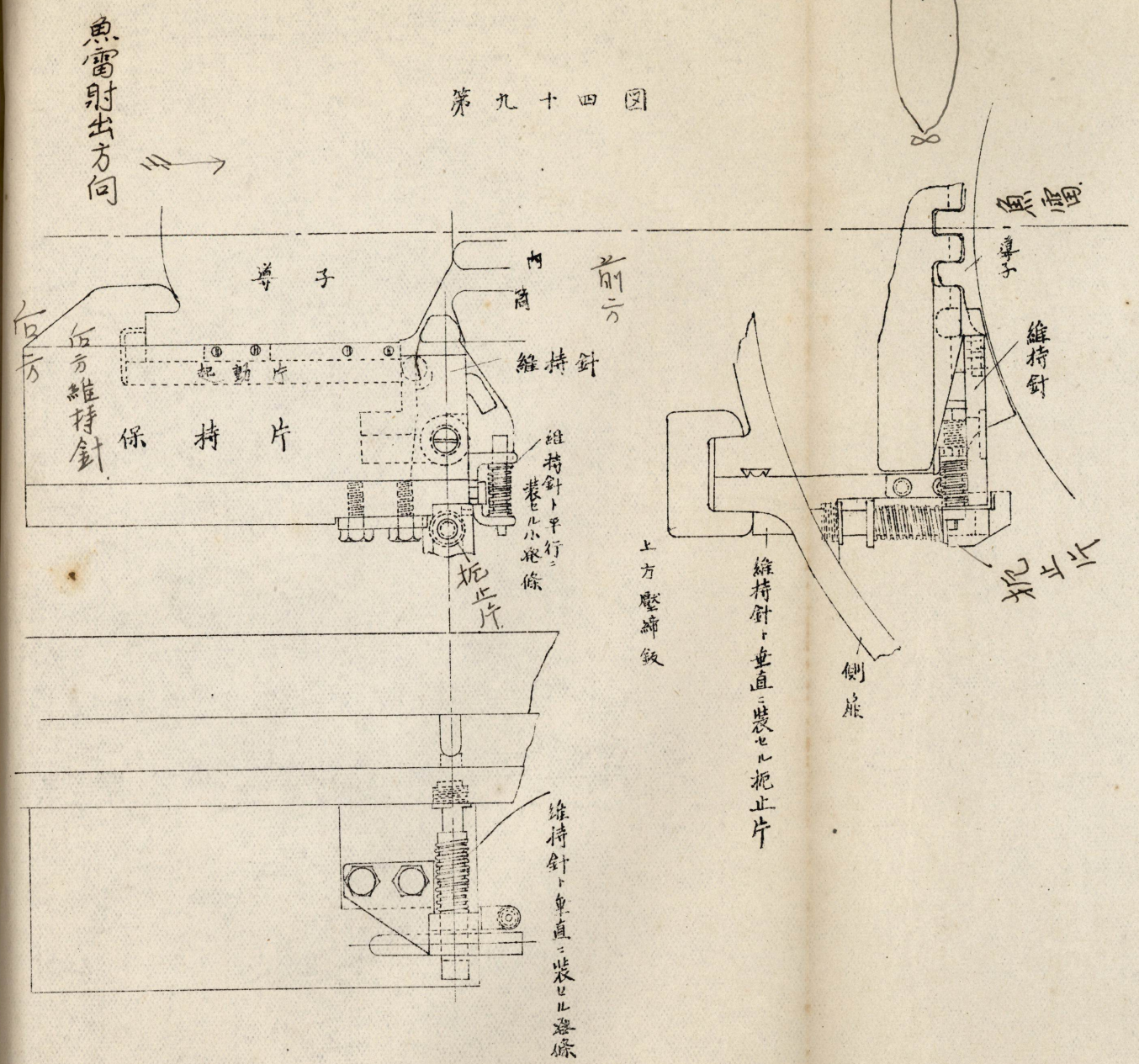




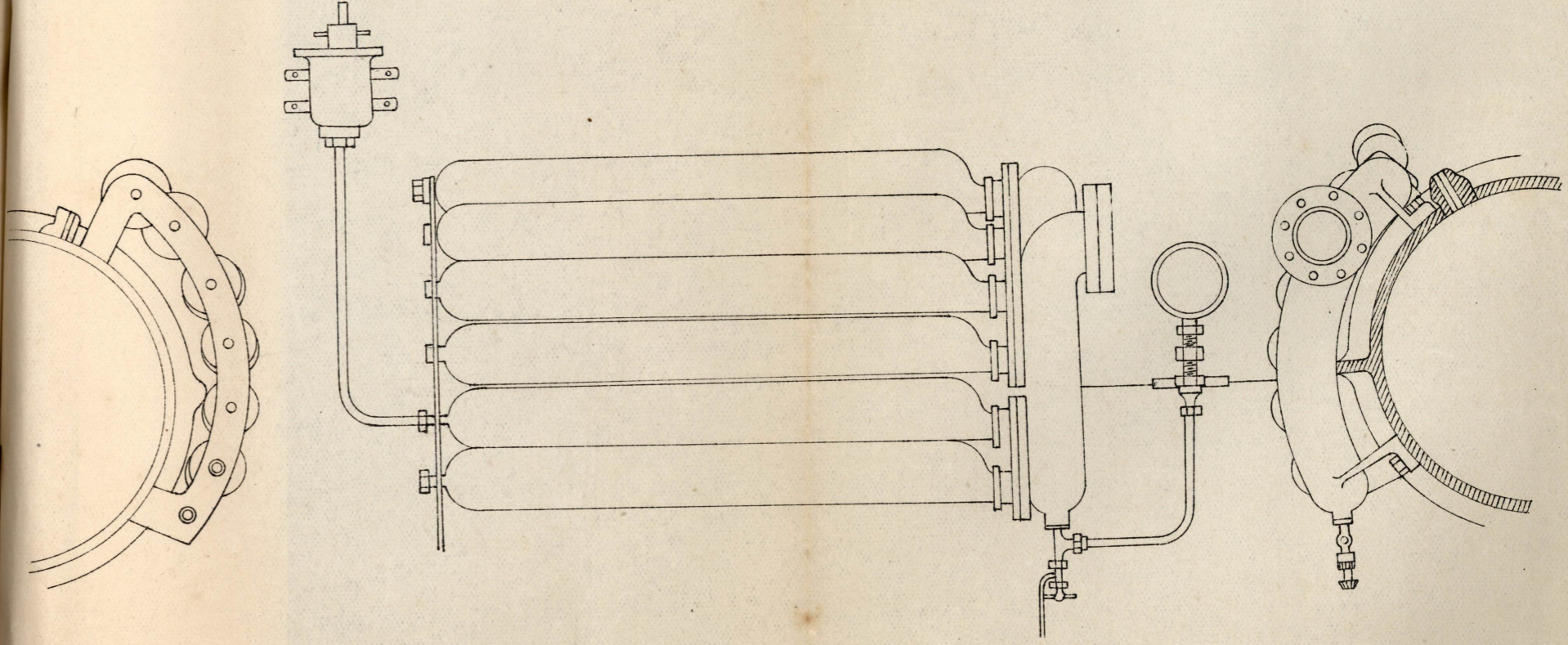


魚雷發射器

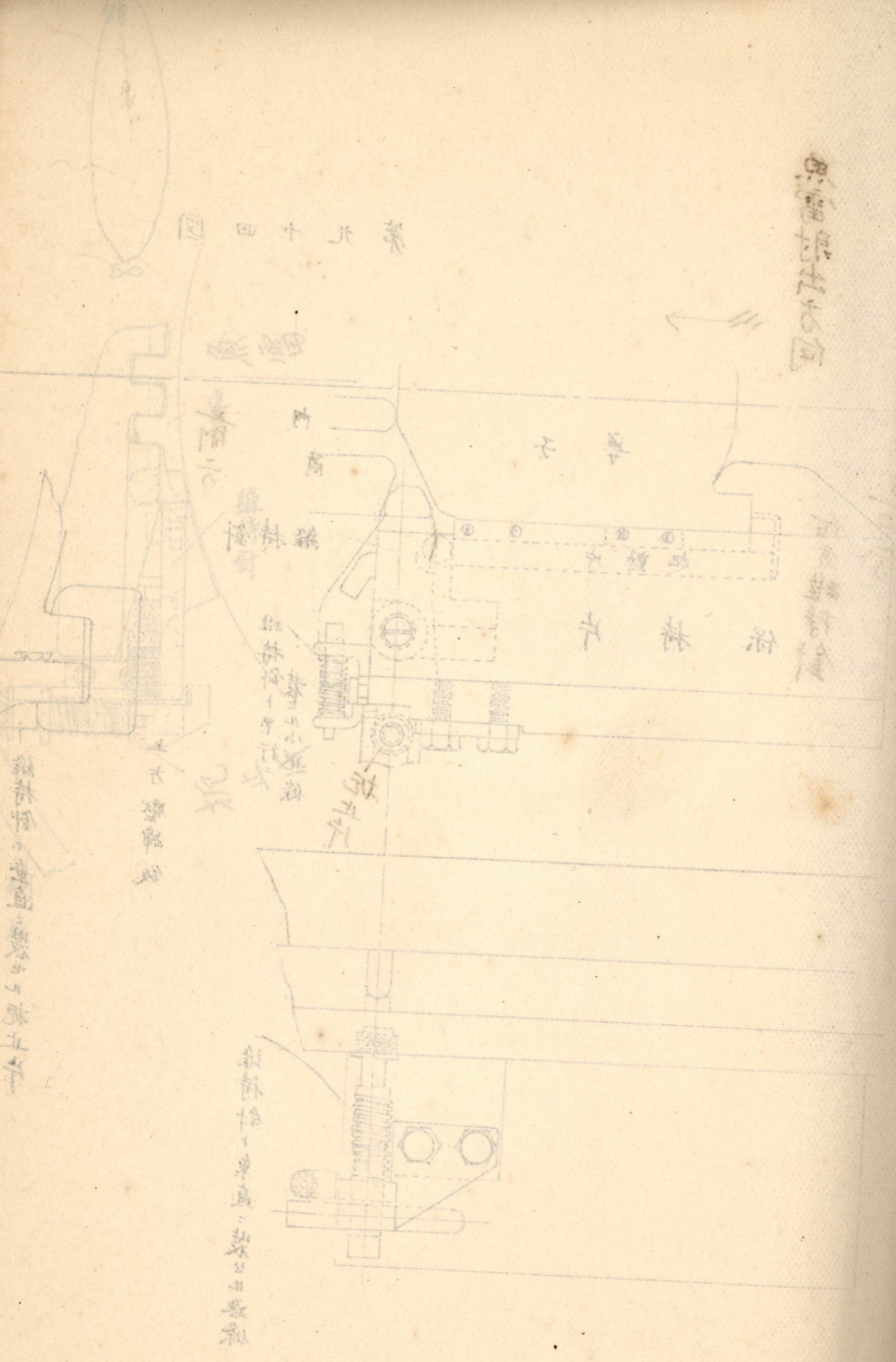
第九十四圖



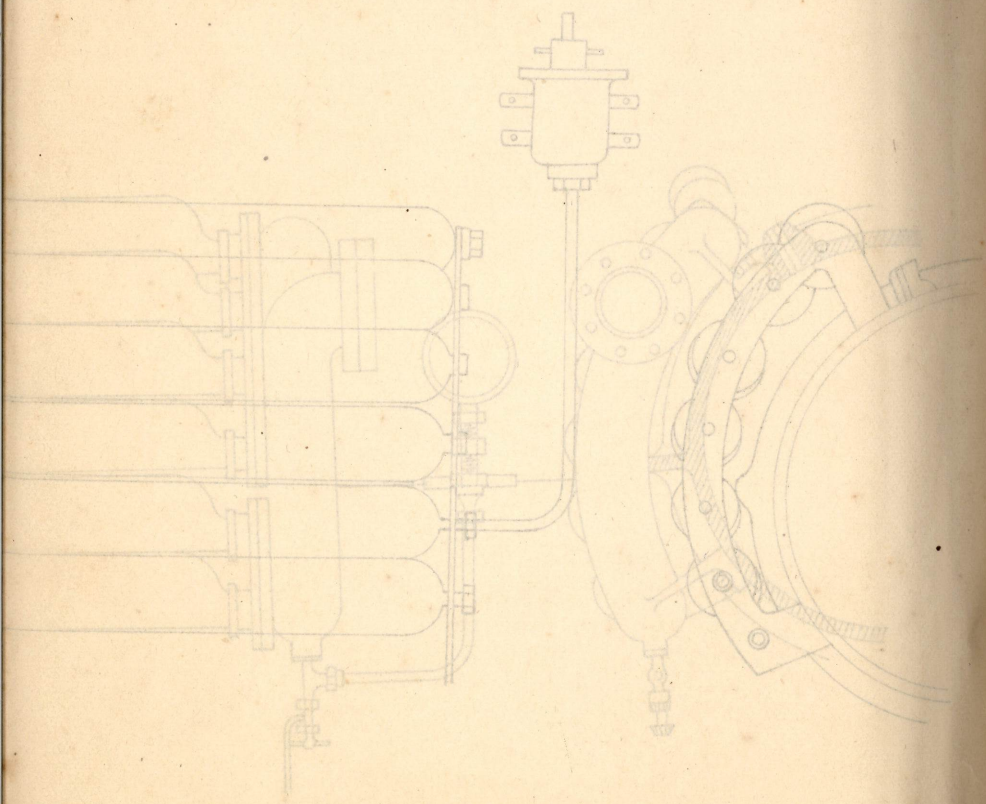
第九十五圖



第九十四圖

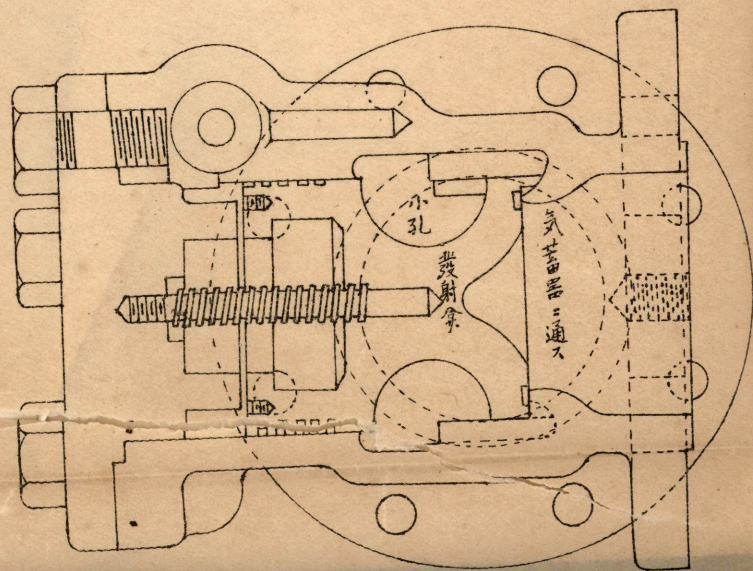
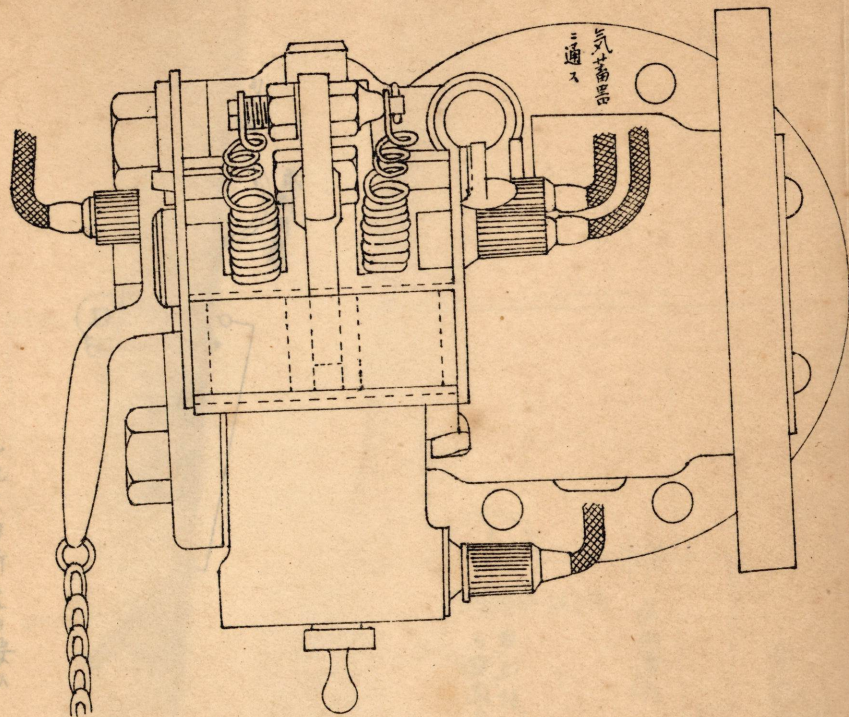


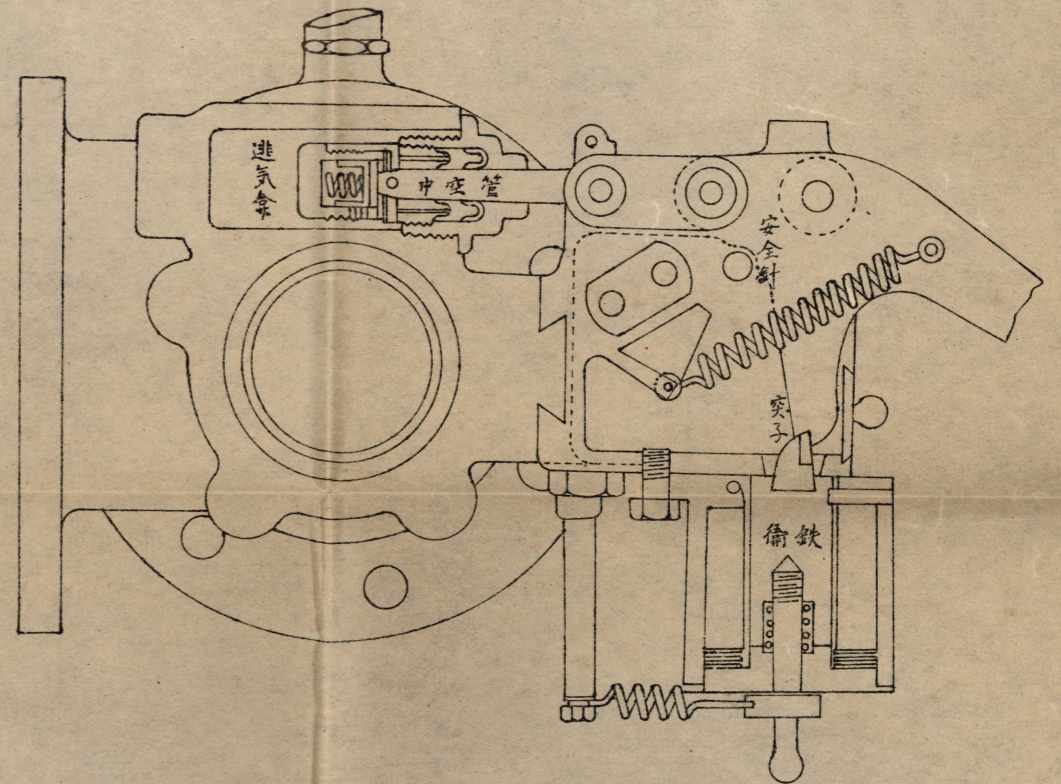
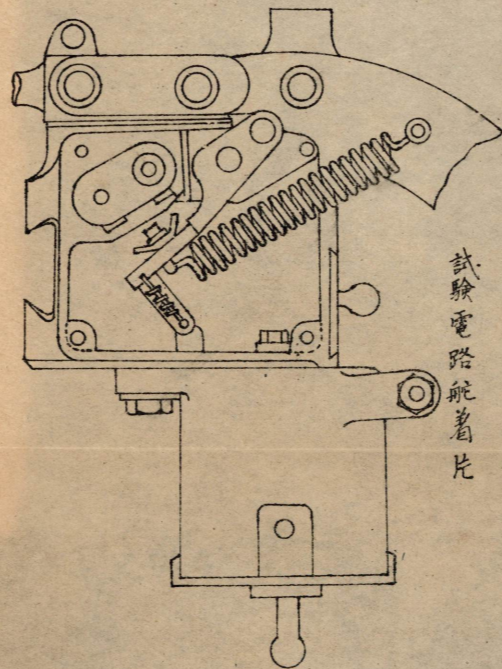
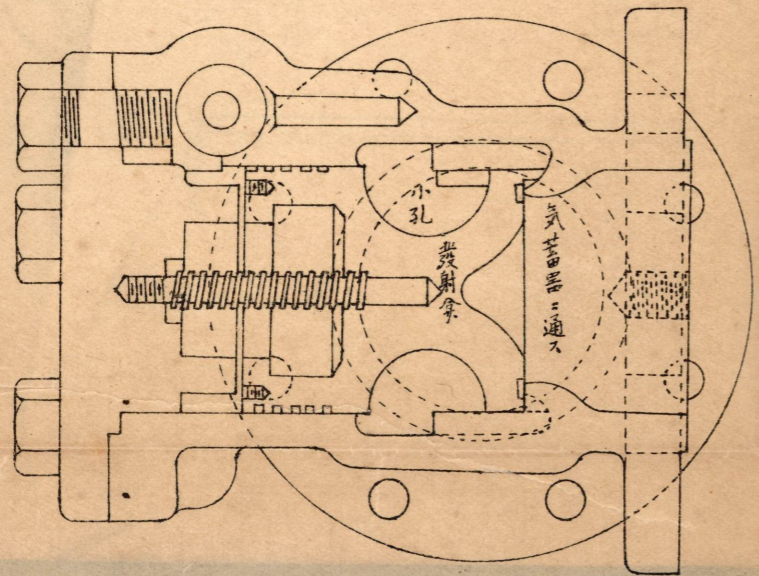
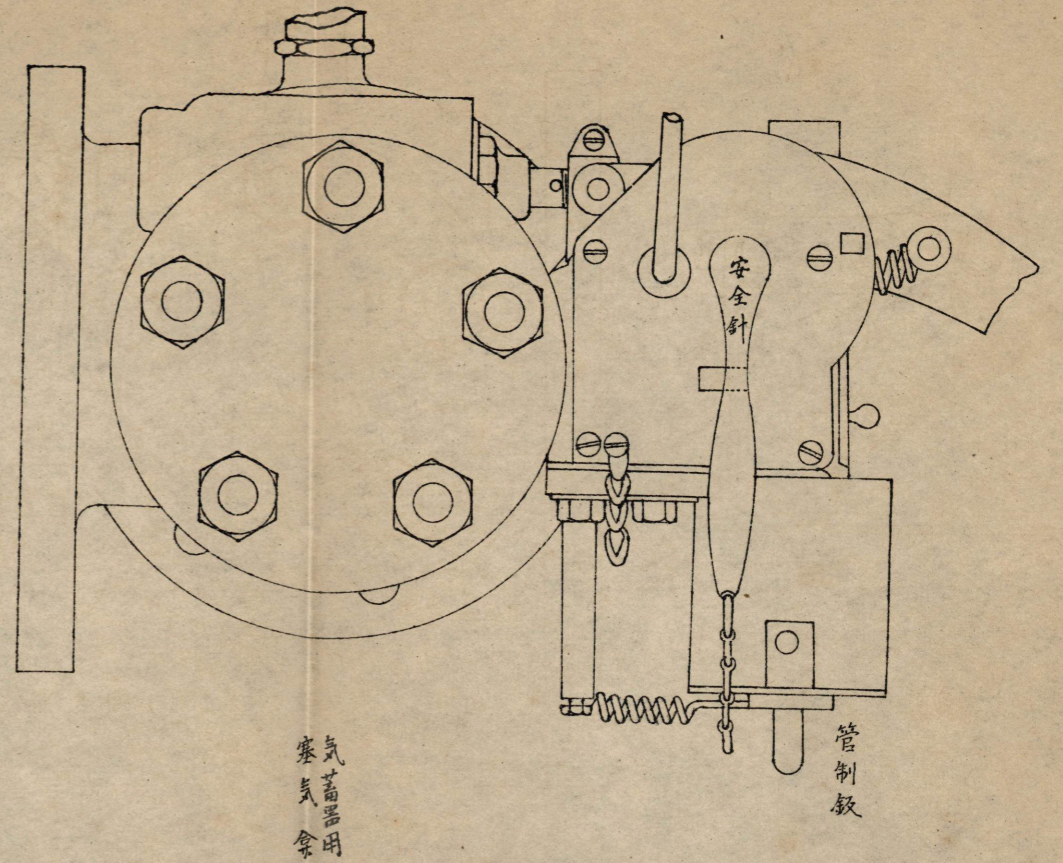
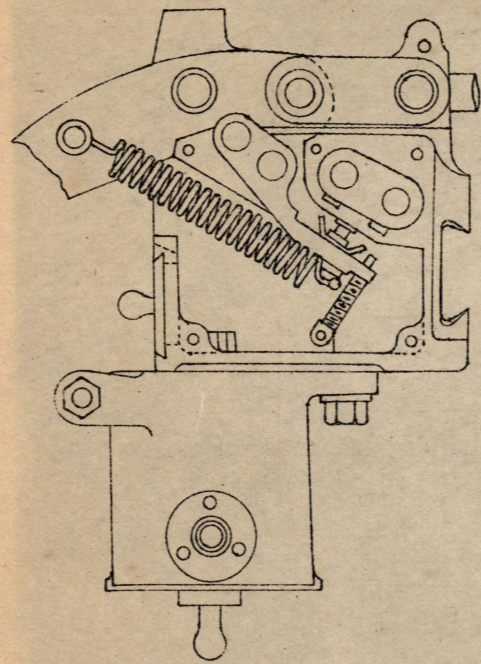
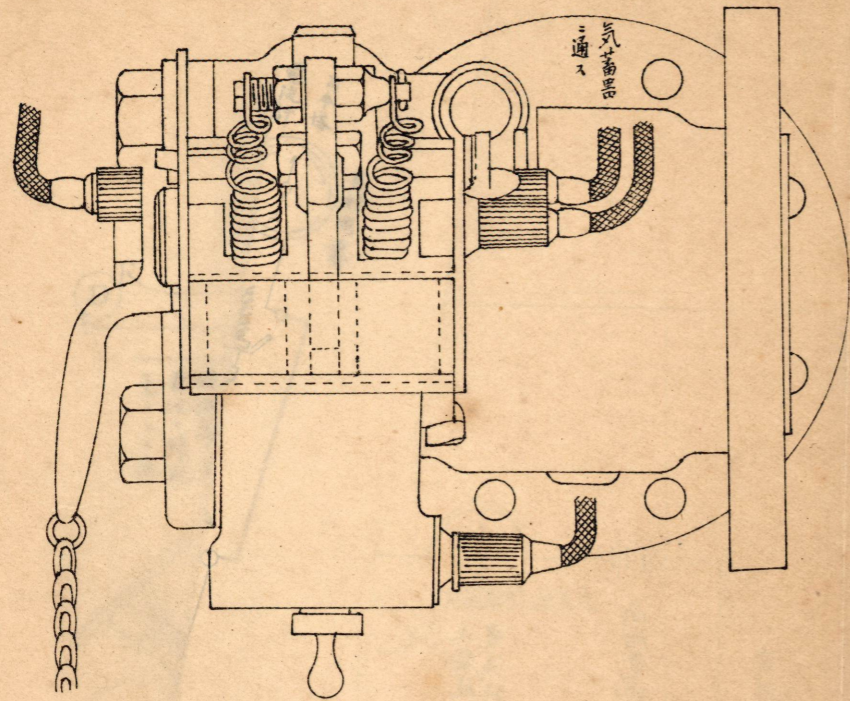
图五十五



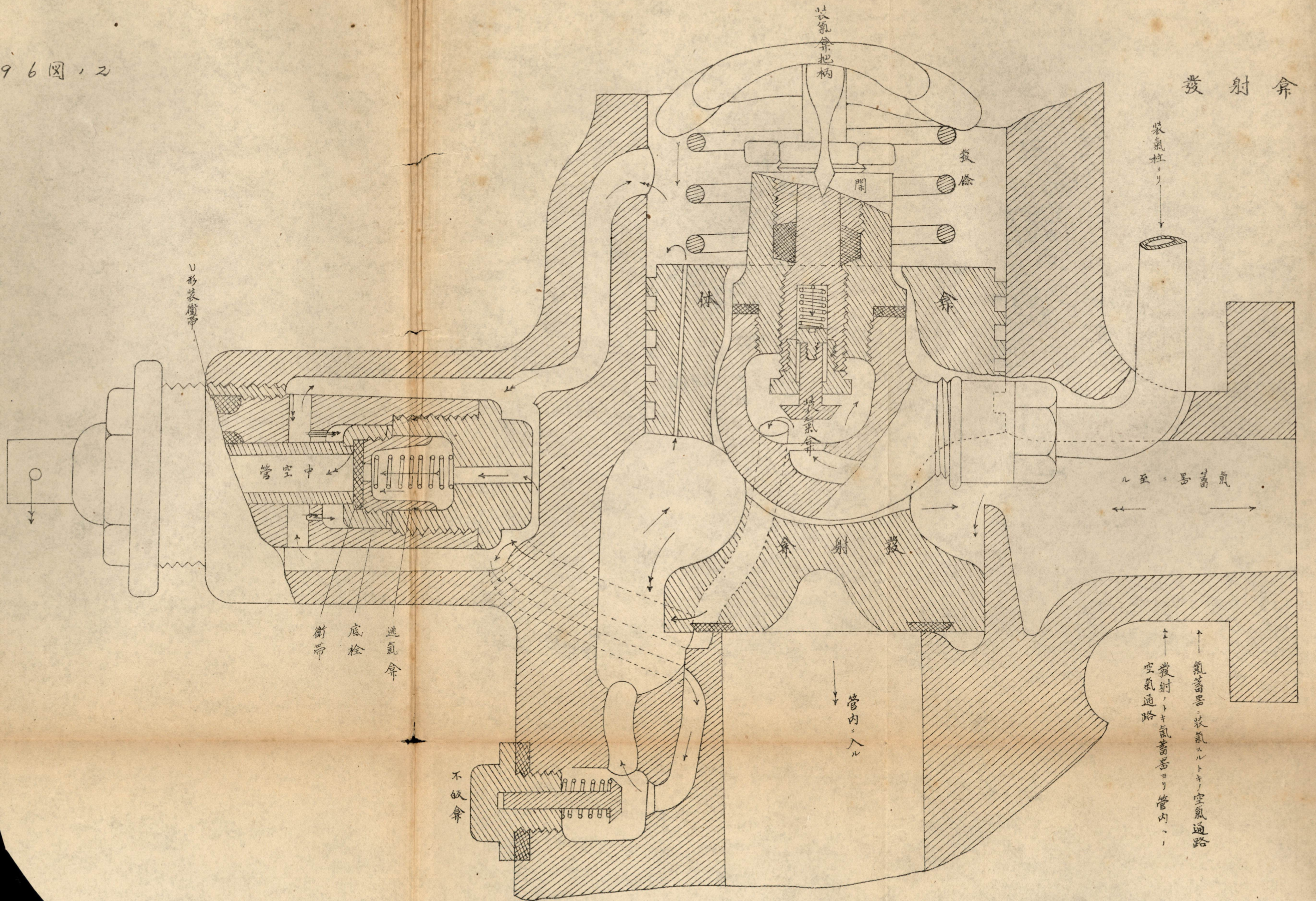
依前图时，长时通电，切断了，要入

本图时，短时通电，要入

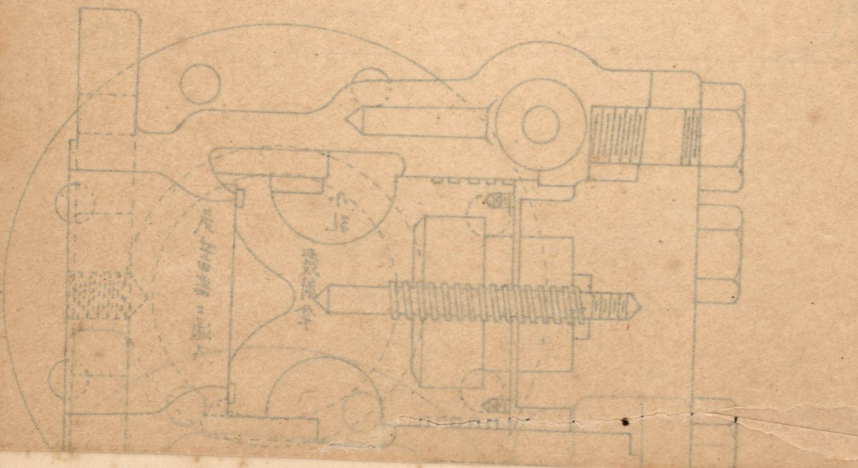
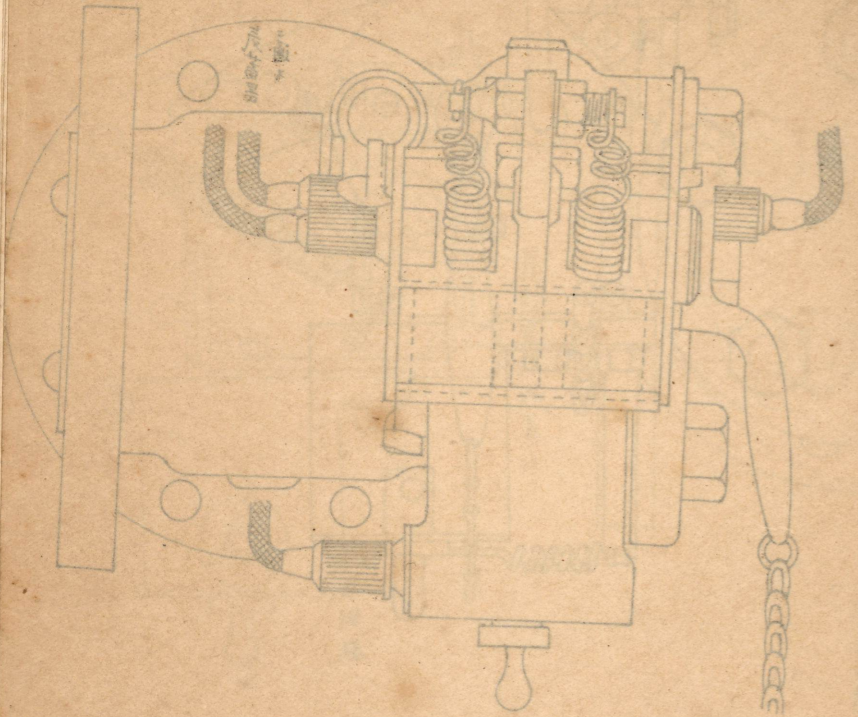




發射傘



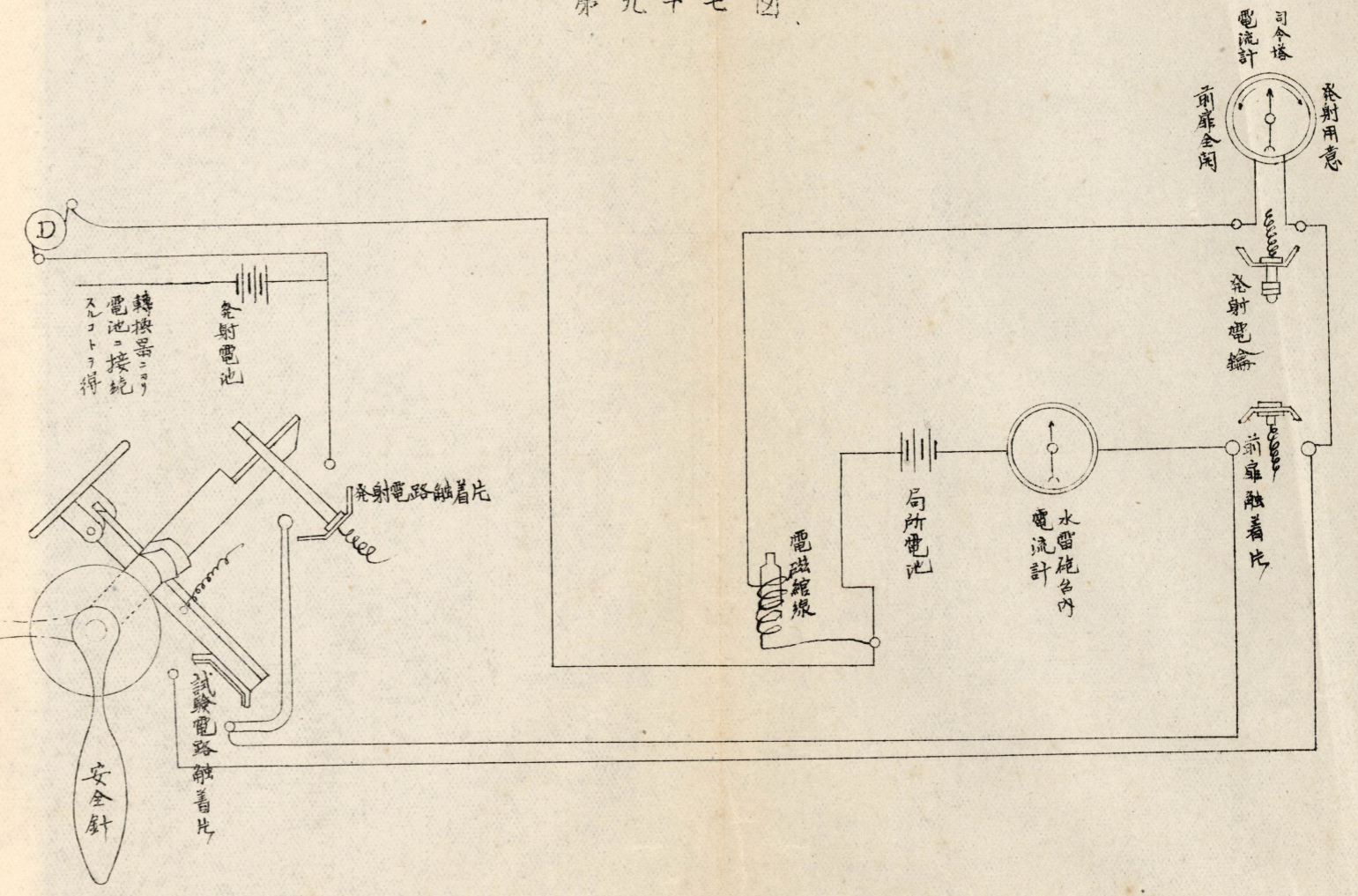
↑ 氣蓄器ニ裝氣スルトキノ空氣通路  
 ↓ 發射ノトキ氣蓄器ヨリ管内ニ  
 空氣通路



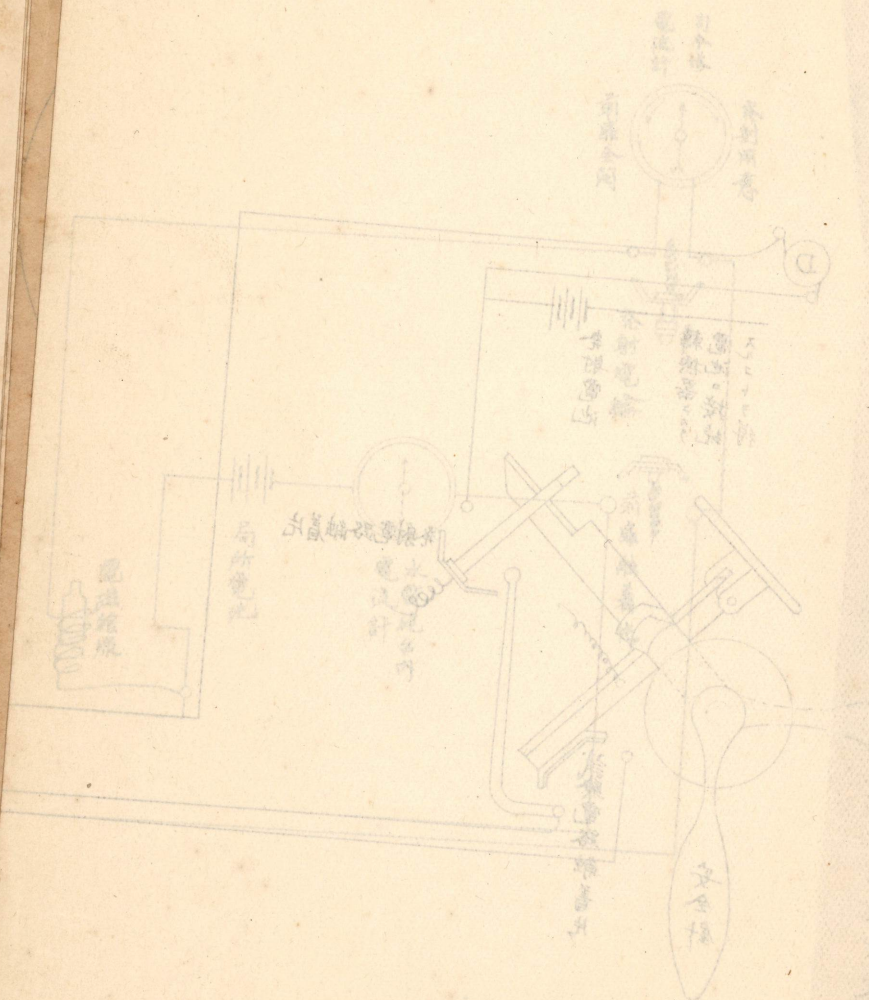
第九十七圖

做前扉、時ハ發射電池ヲ切斷スルヲ要ス

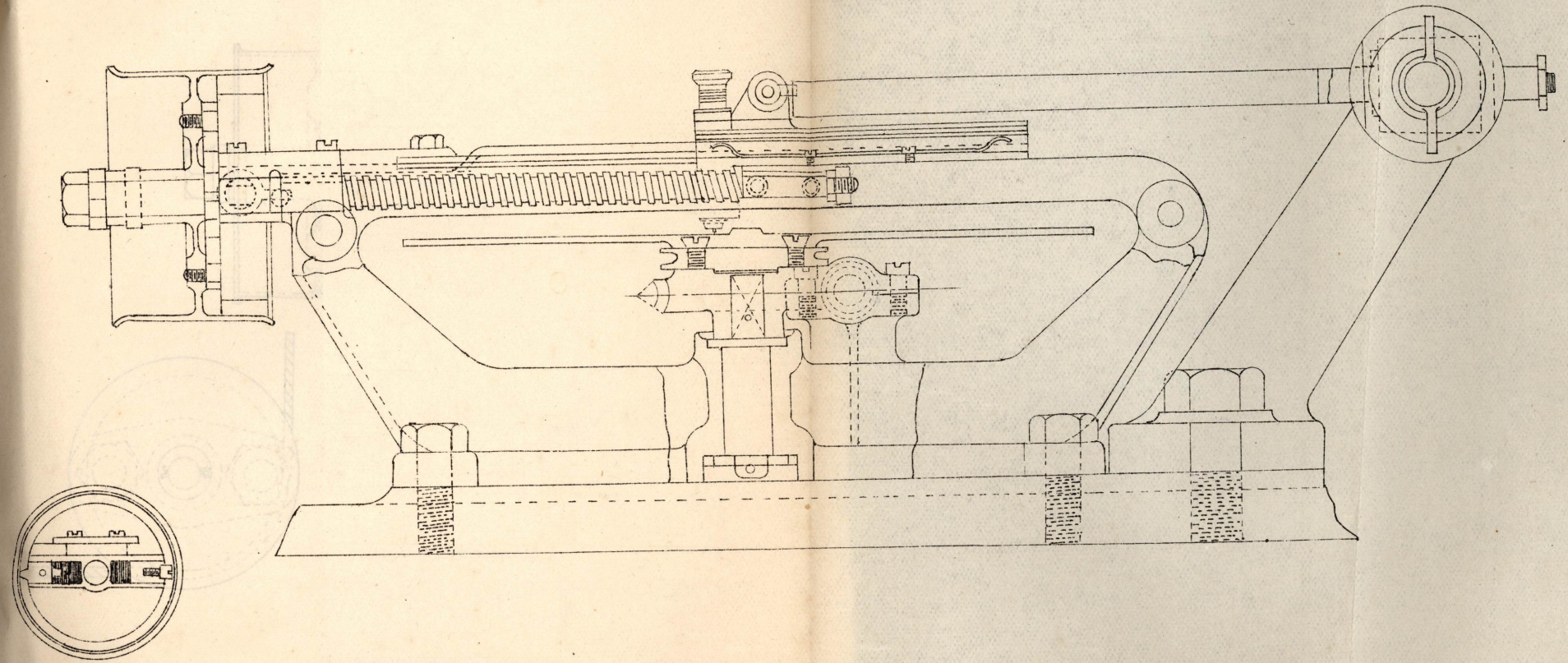
安全針把柄、左九十度  
回轉位置



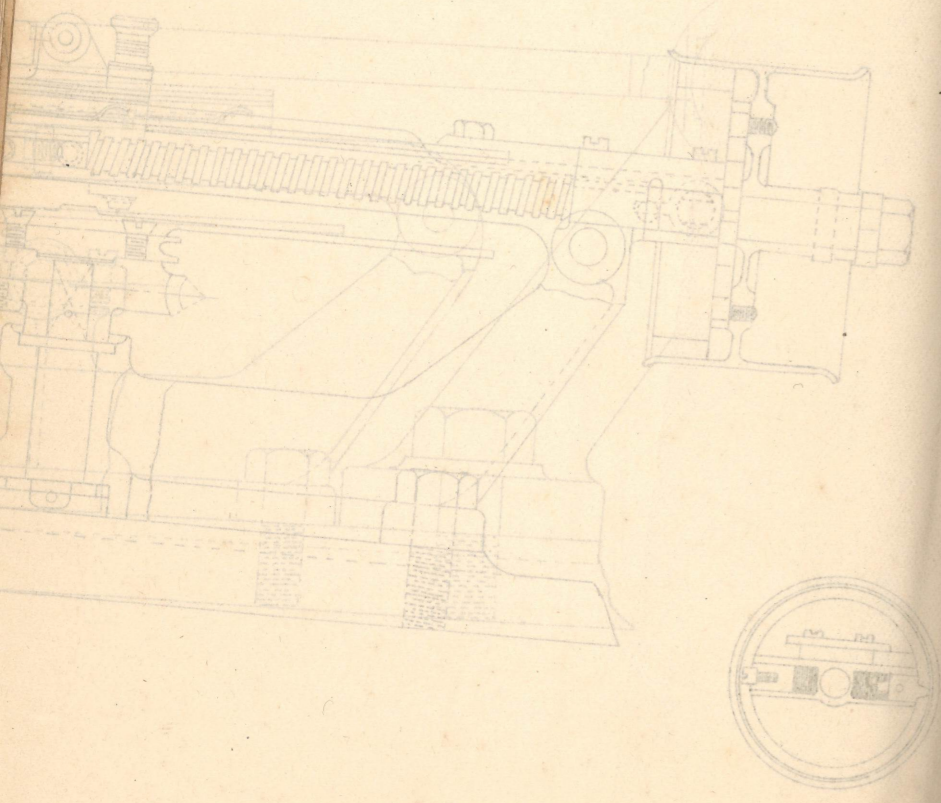
切刀架



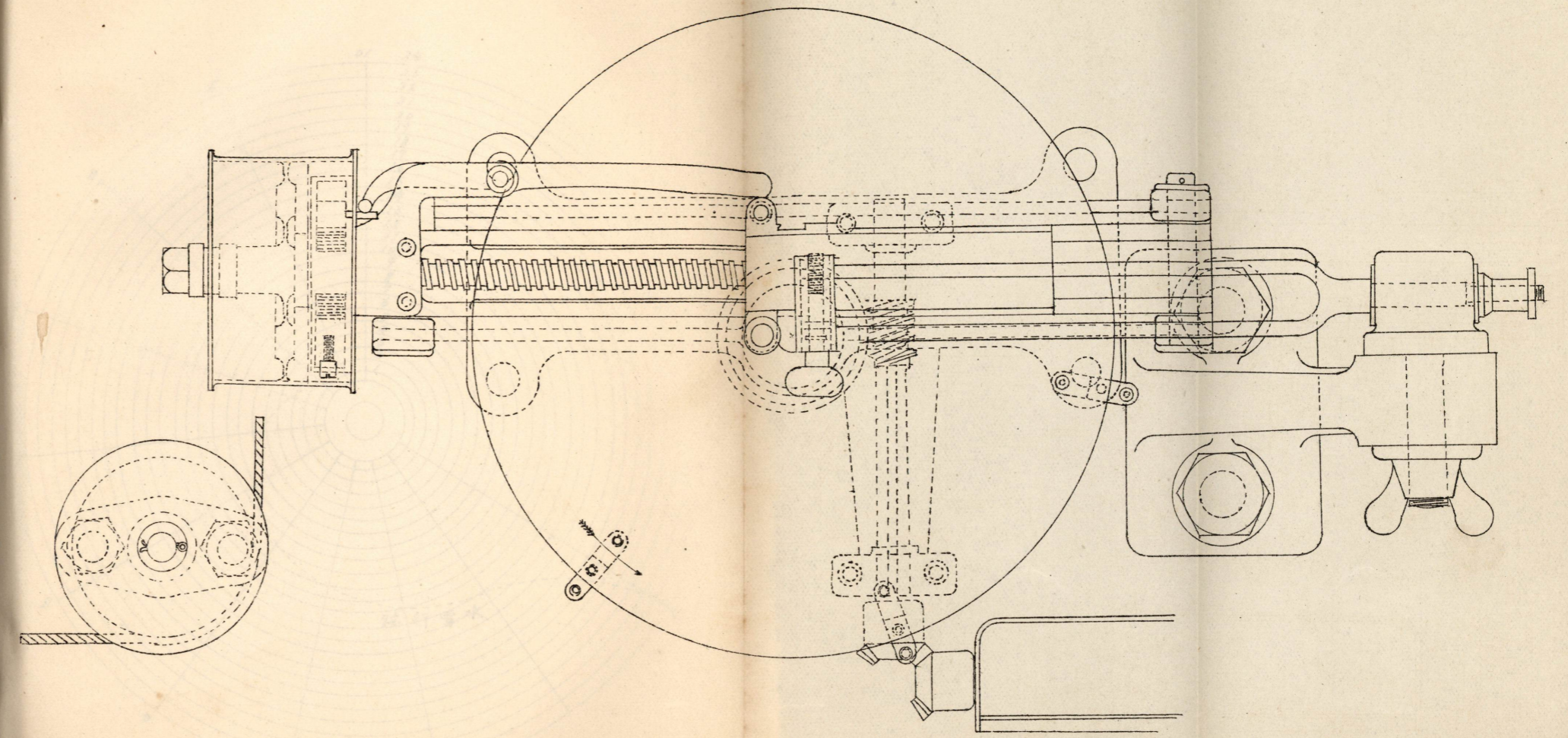
第九十八图，一。



第十四图

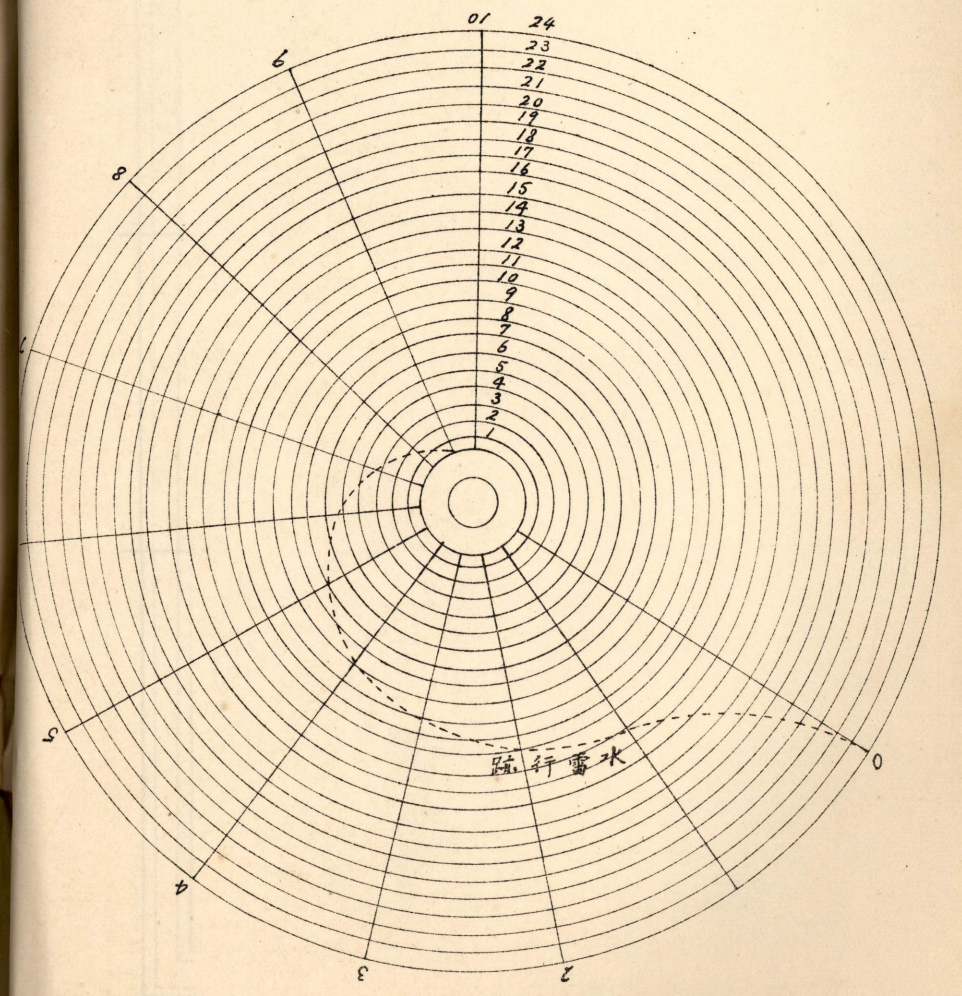
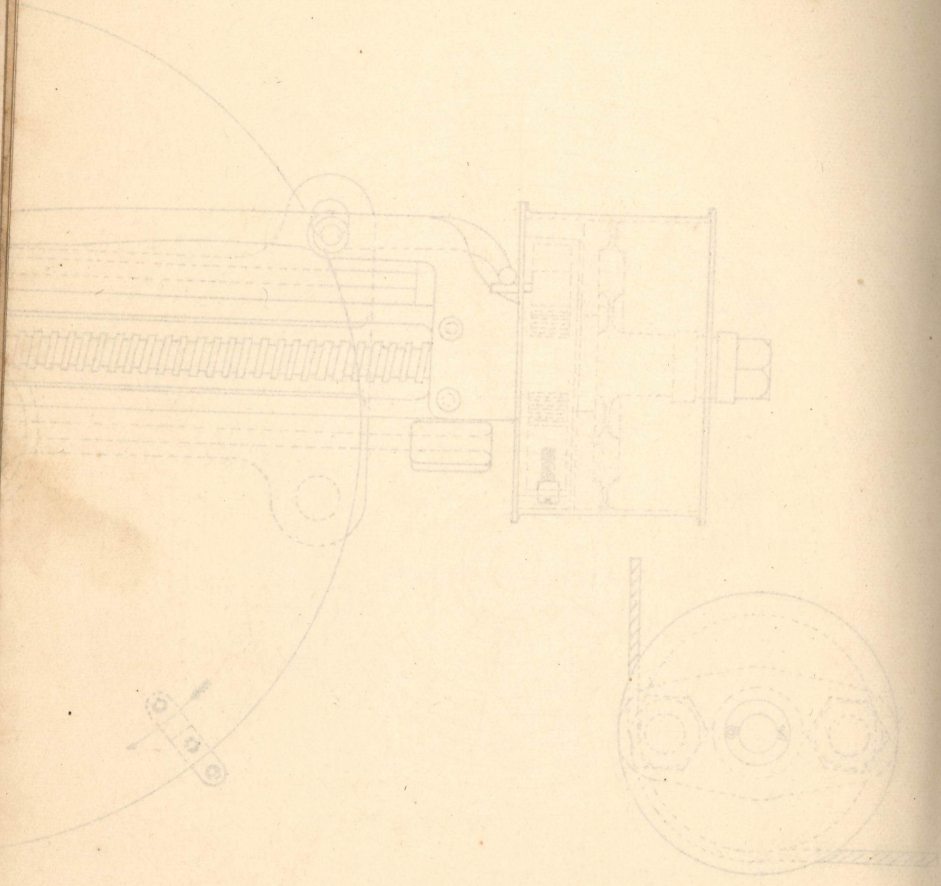


第九十八图，二。

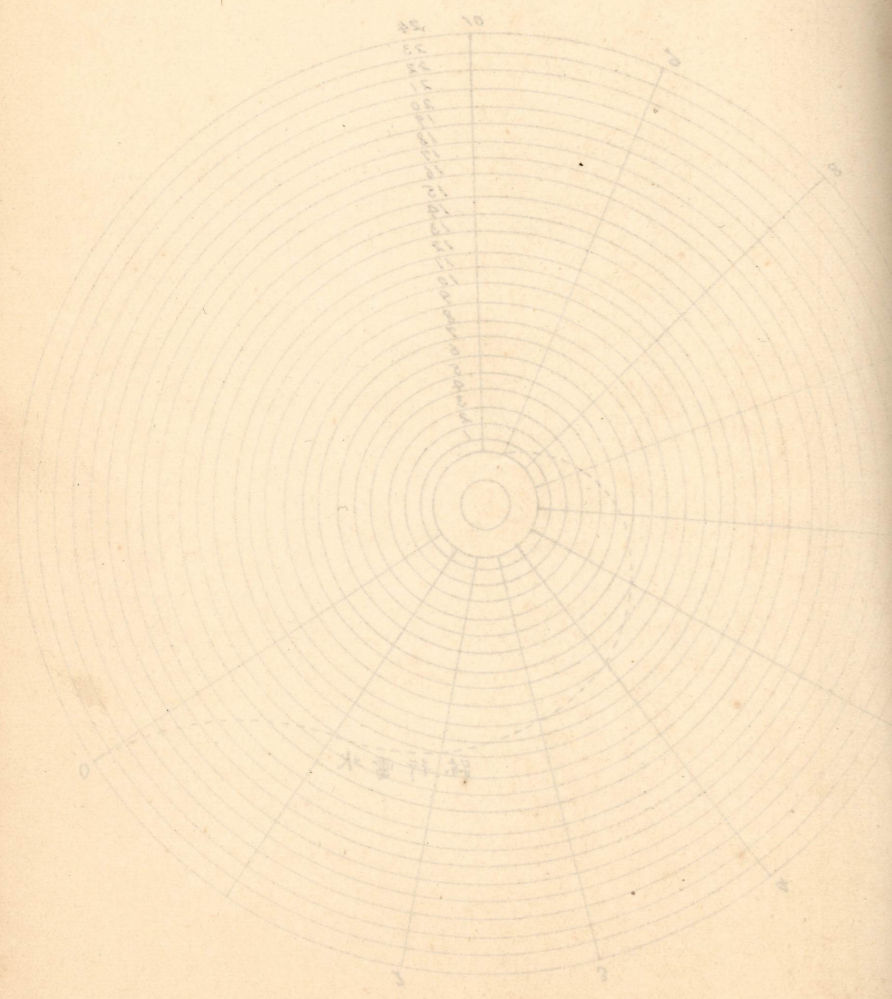




第九十九圖

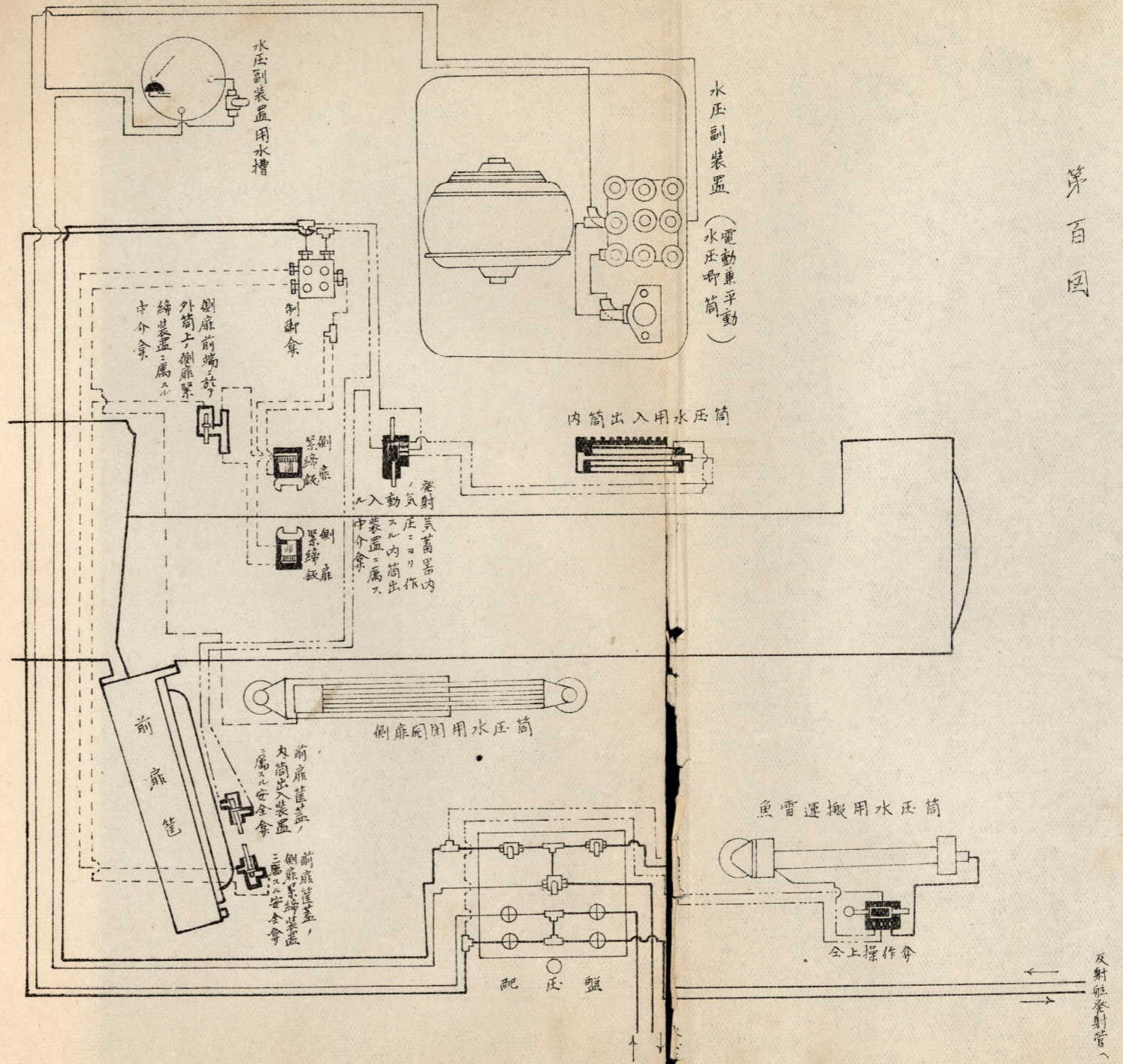


圖六十九



水雷射管

第百圖



第廿九期生徒

赤羽

埋号	
寄贈者名	赤羽龍熊
寄附日	1970-1
連号	3288