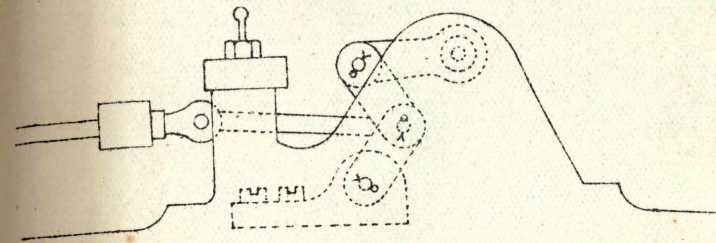
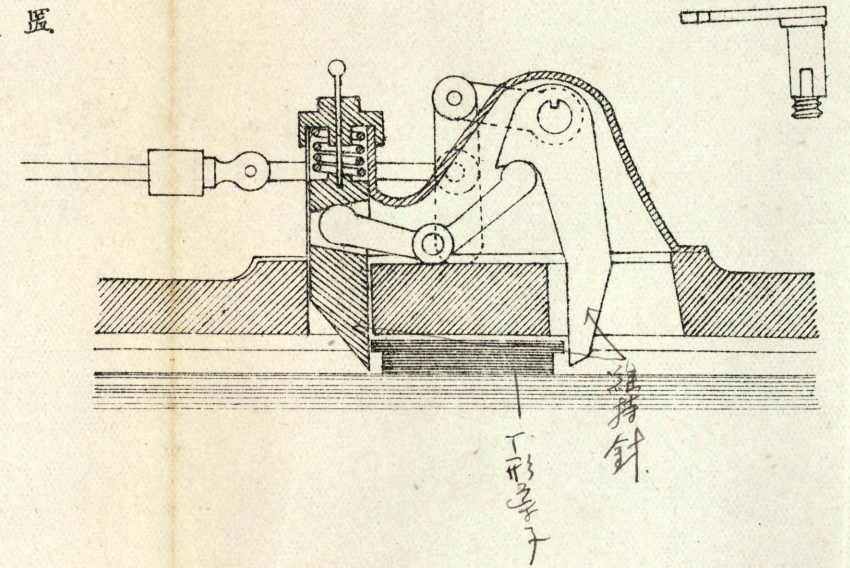
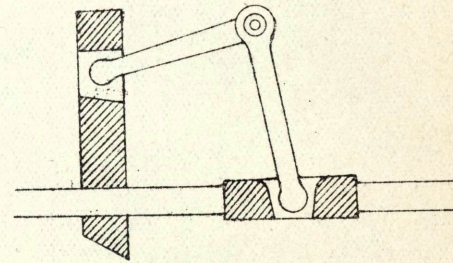


第五十二圖

維持針裝置

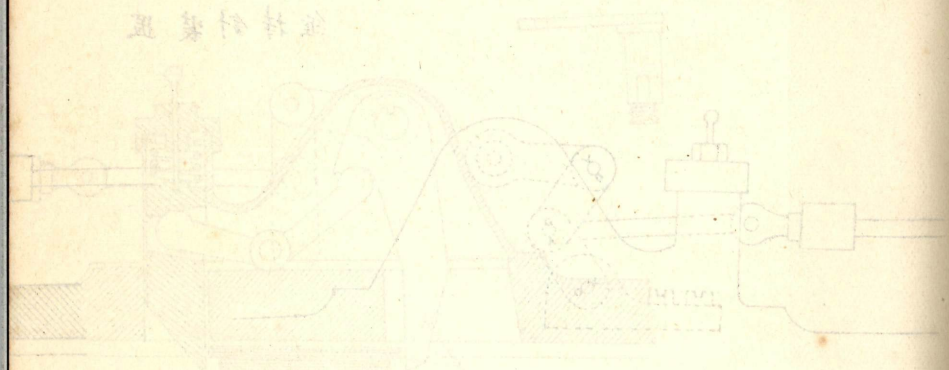


起動鈞

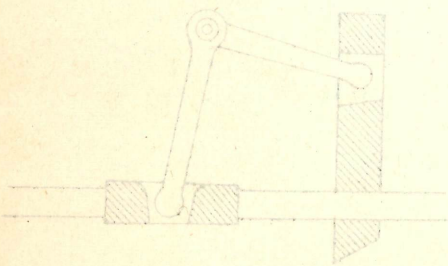


圖二十五

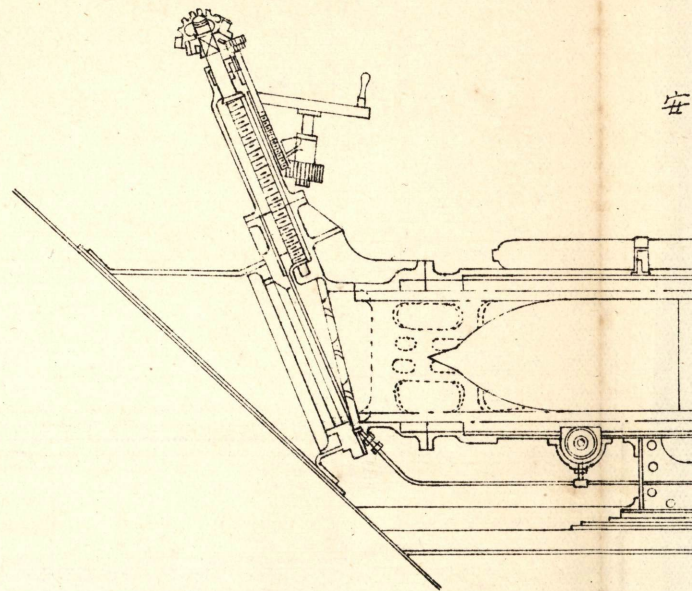
魚雷發射機



彈簧

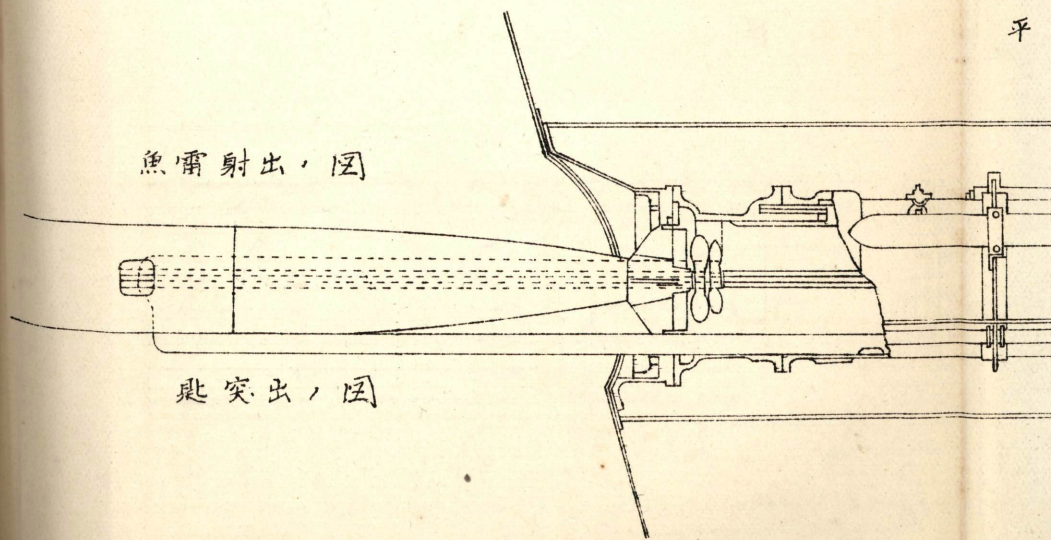


安



平

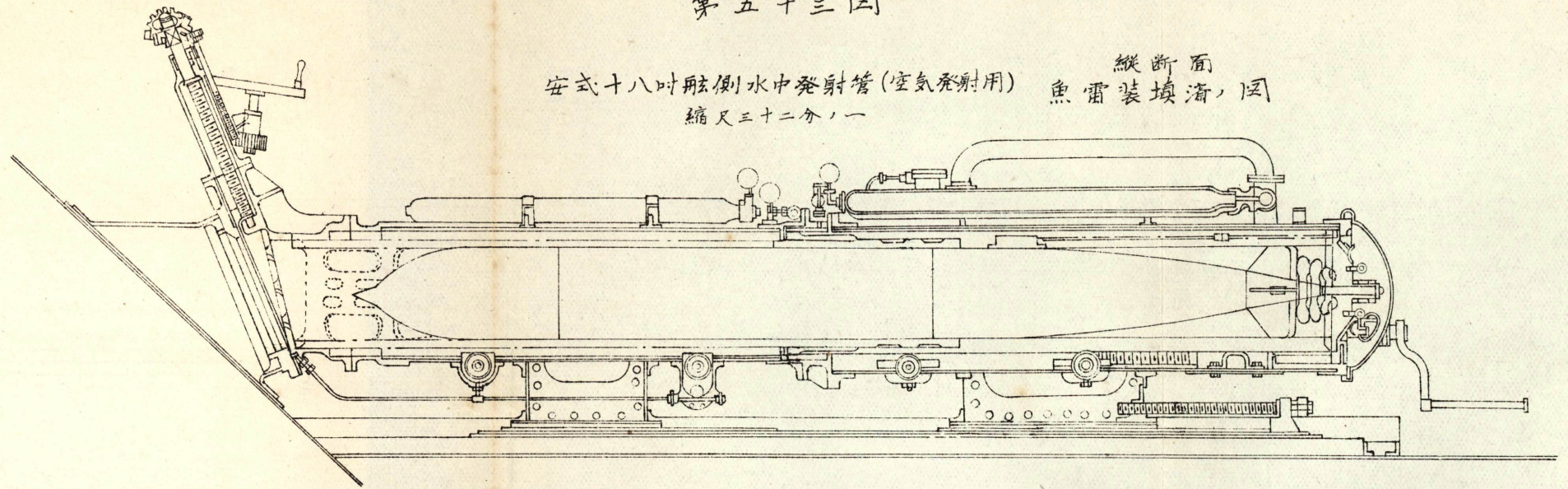
魚雷射出，圖



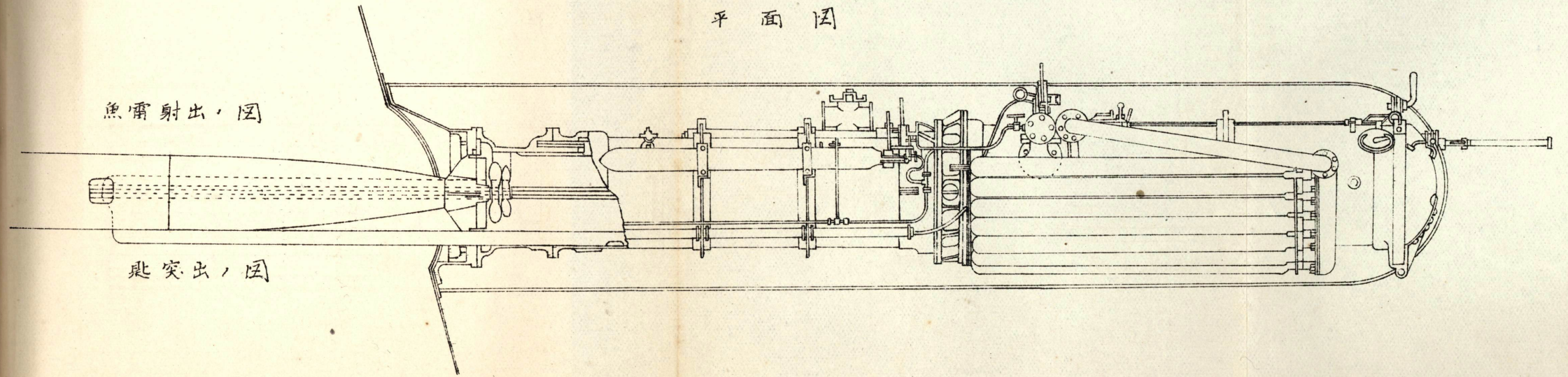
匙突出，圖

第五十三圖

安式十八吋舷側水中發射管(空氣發射用) 魚雷裝填管, 圖  
縮尺三十二分一



平面圖



第五十圖

在第十八圖... (faint text)

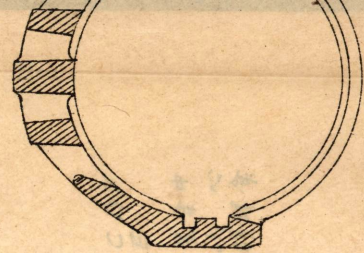


...

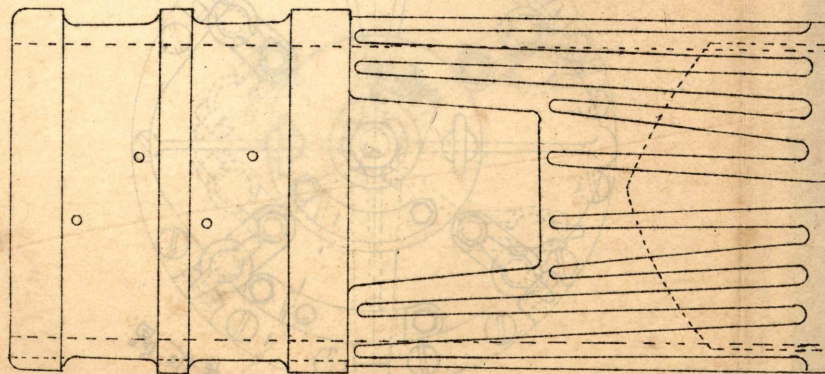
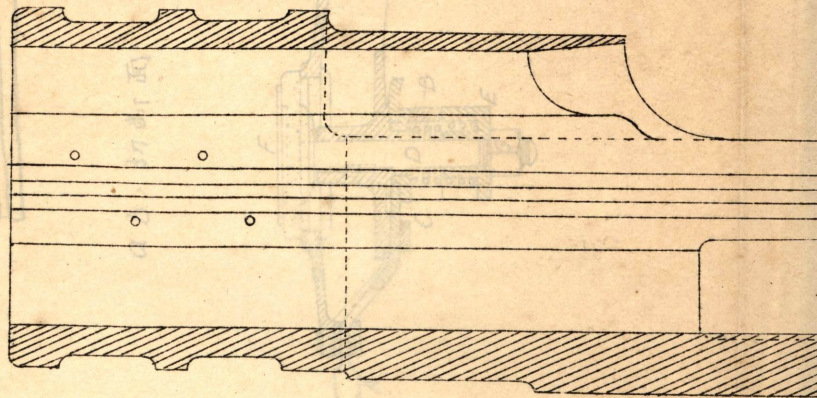
...

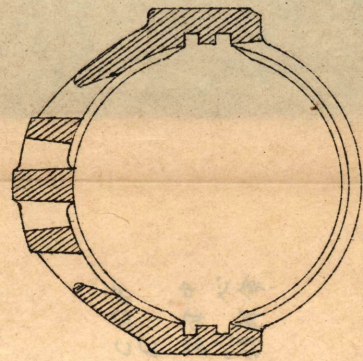
圖、汽機斷面

圖、汽機與

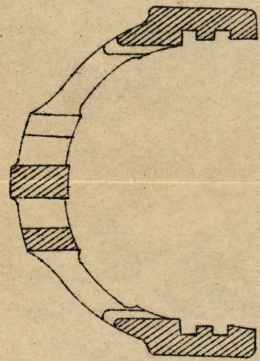


B.B. 切斷

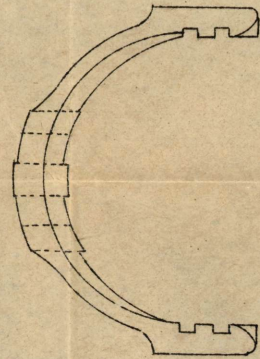




B.B. 切断

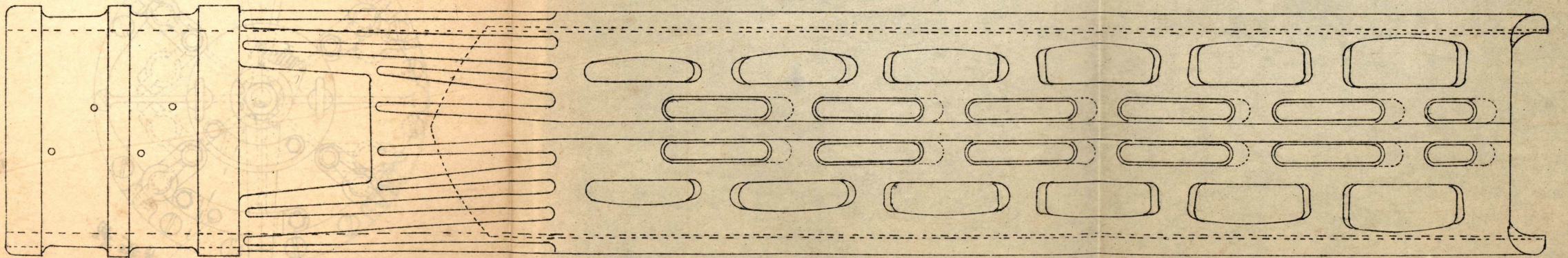
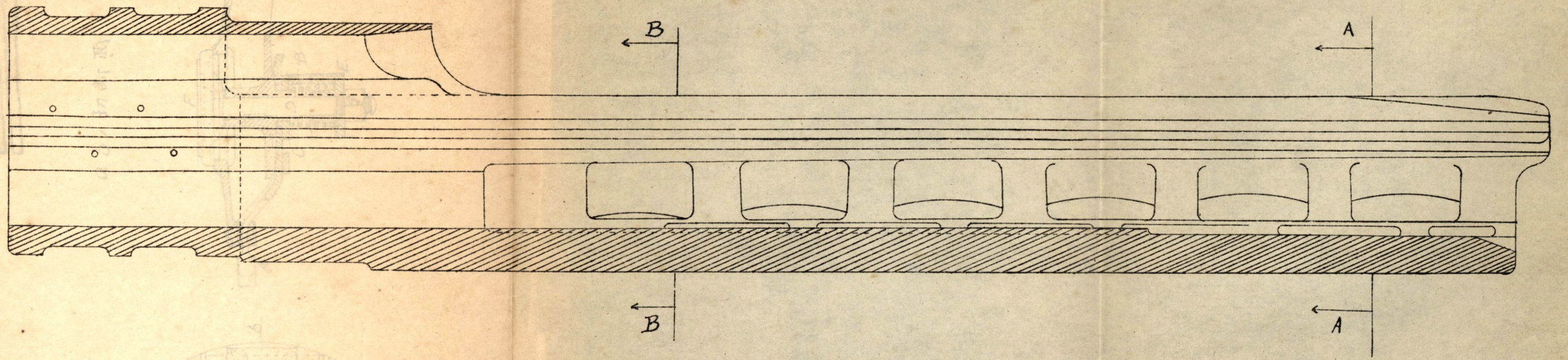


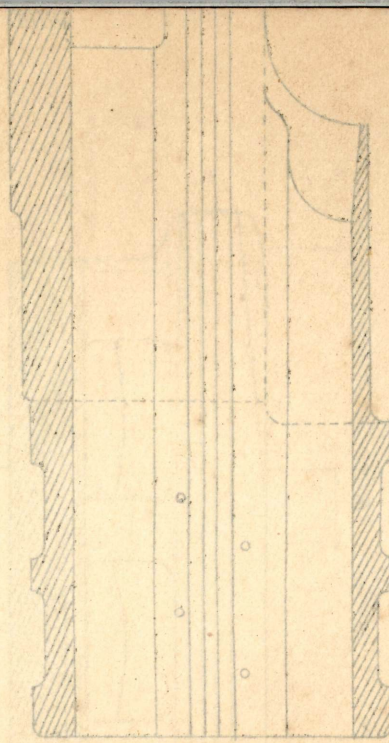
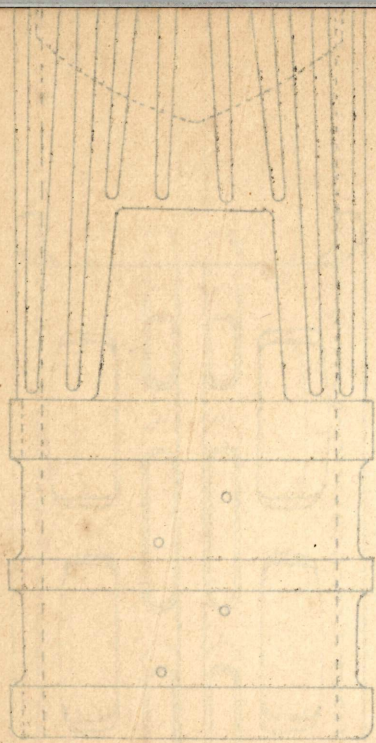
A.A. 切断



前部ヨリ見ル

安式六吋舷側水中發射管匙形





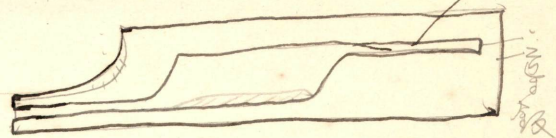
轴心及轴



第五十五图



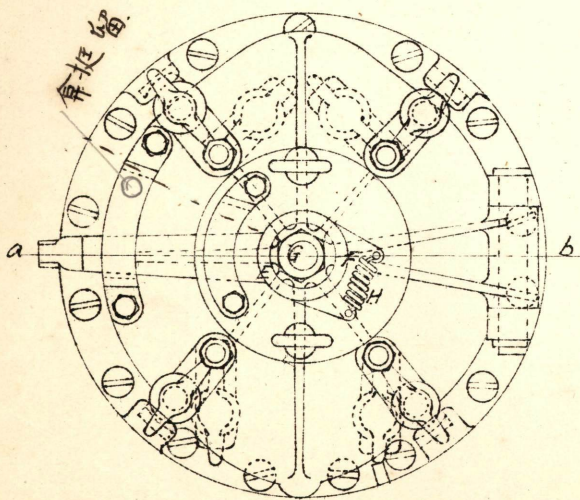
内筒後扉及中心余



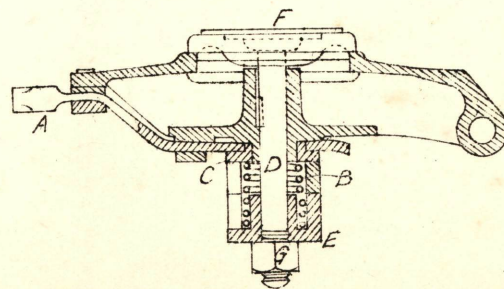
余挺轴心及轴

轴心及轴

a b, 切断面

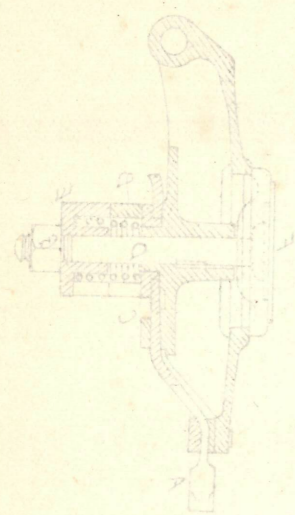


余挺轴



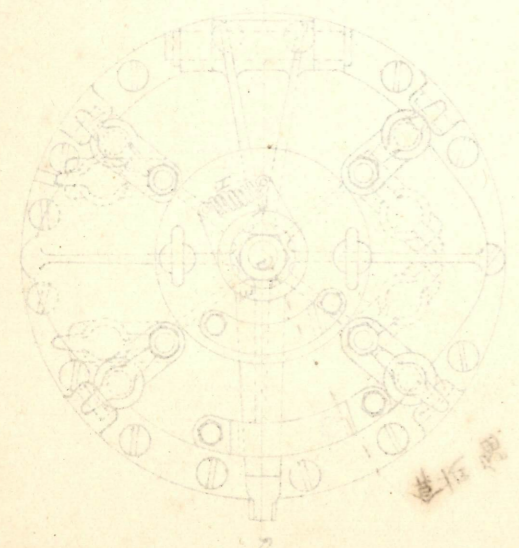
A B C D F  
E  
余挺轴心  
挺快轴心  
轴心余

針  
 針  
 針  
 針  
 針  
 A B C D E



圖中各部分之說明

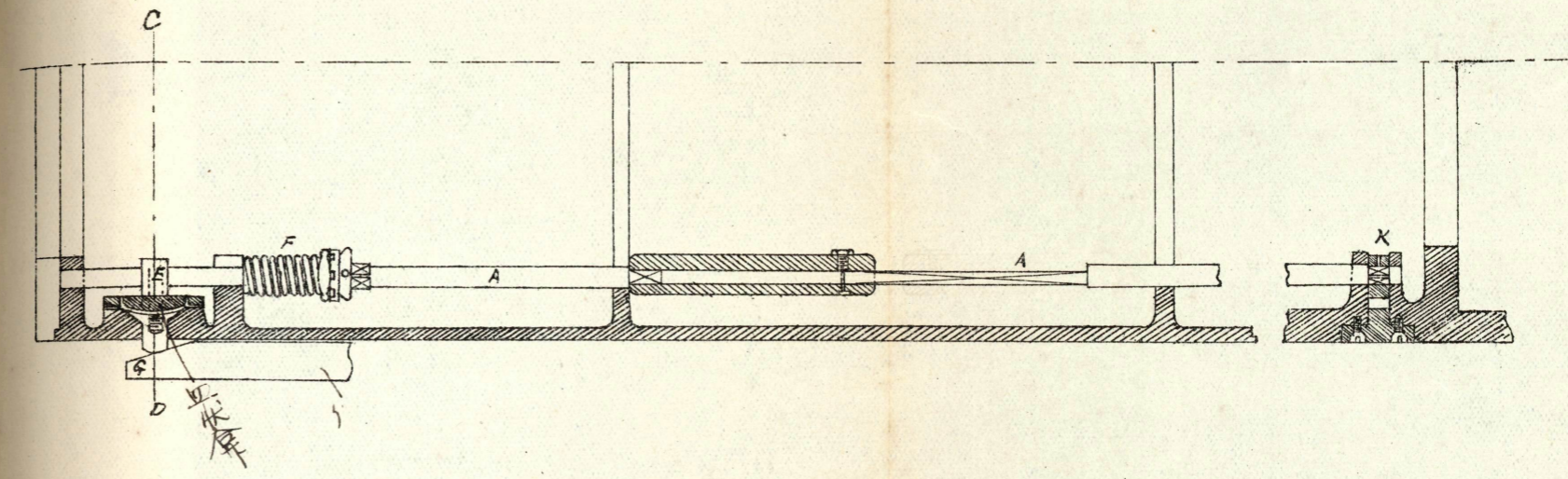
針之剖面圖



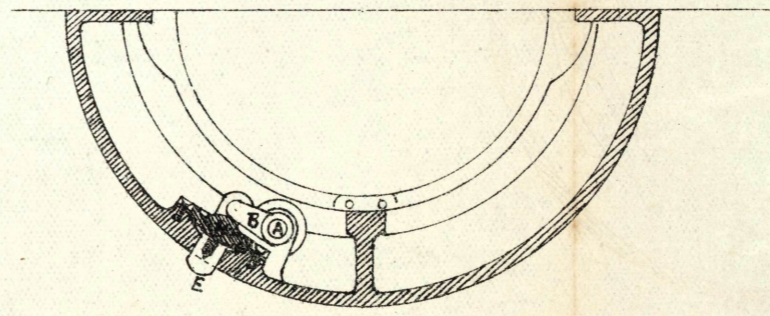
針之頂面圖

第五十六回  
 維持針裝置

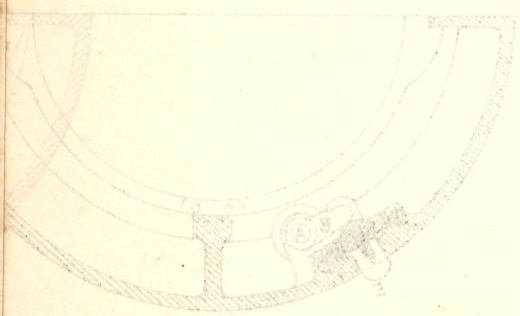
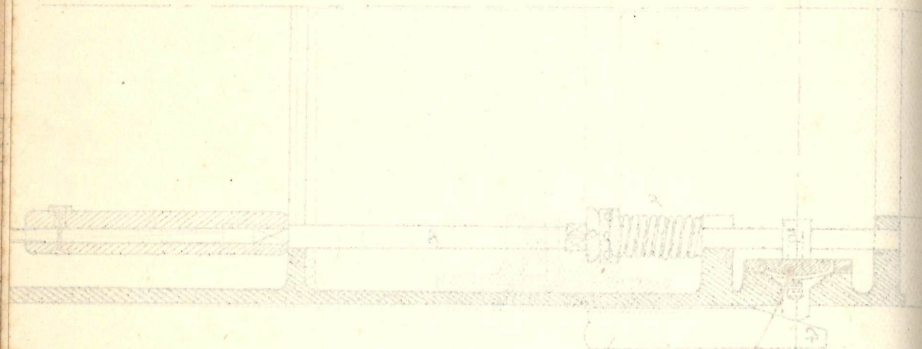
A B E F G H K  
 維持針 曲板 小齒 撘回盤條 斜板 針 維持針



C-D, 切断面



圖五十七  
五十七號

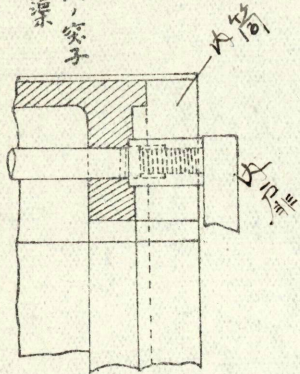
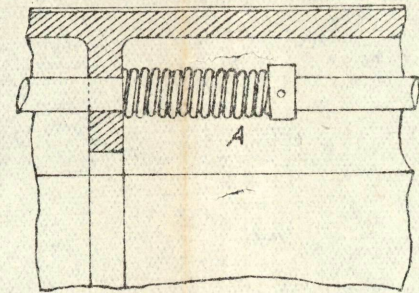
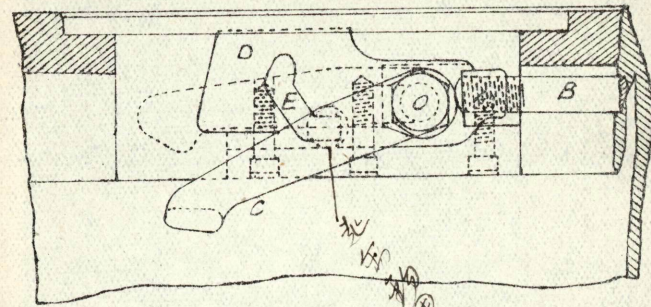


第五十七圖

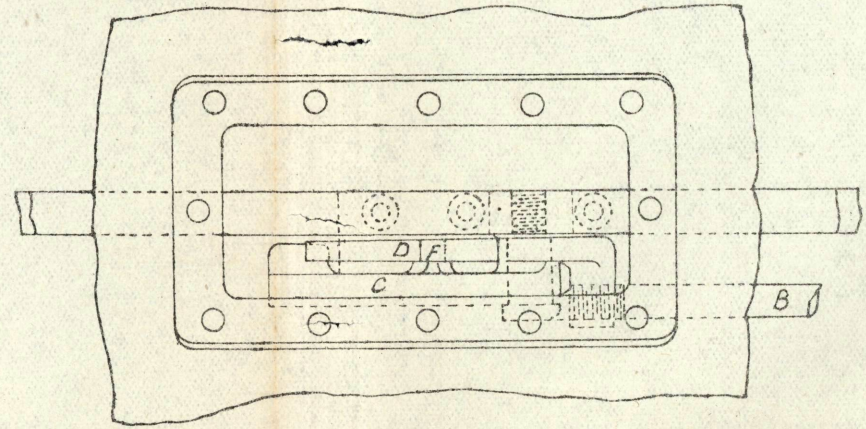
起働鉤裝置 縮尺五分一

甲

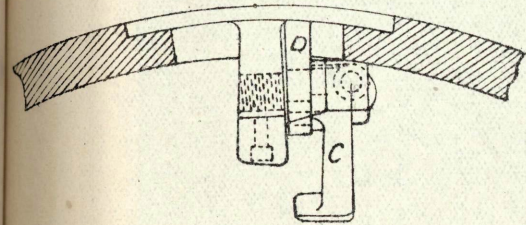
A B C D E F  
 發長起導導起  
 條長動導導動  
 鉤鉤鉤片溝鉤  
 子



乙  
 平面



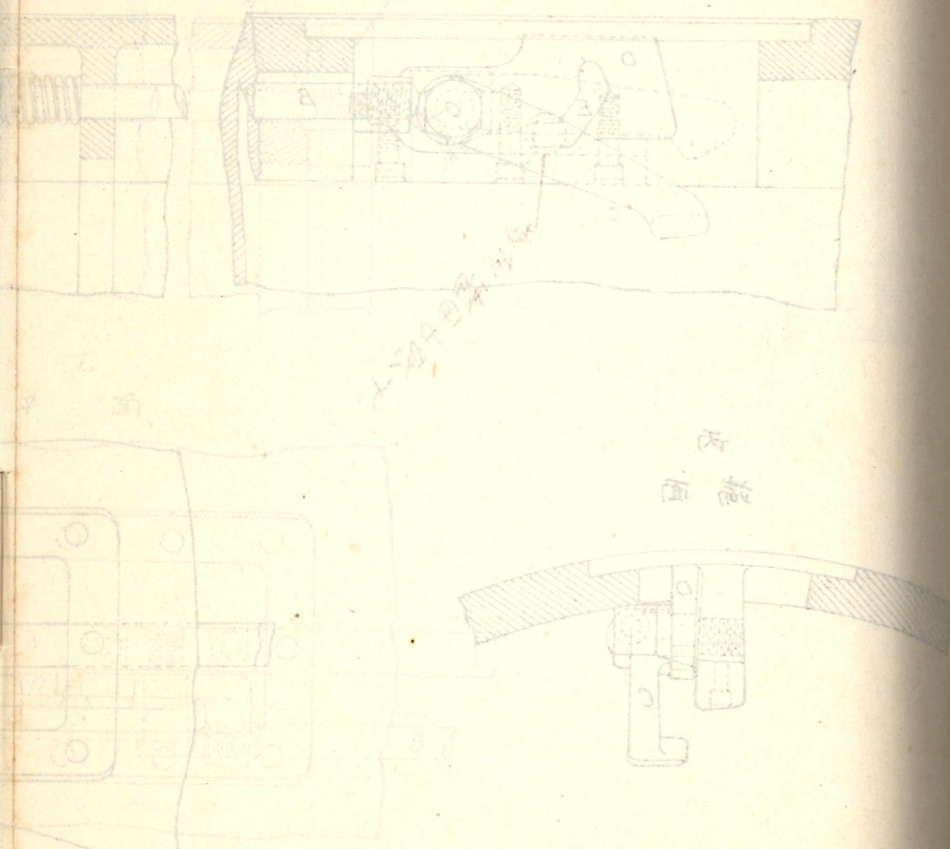
丙  
 端面



此係圖五十七



第五十八圖  
 新製此機用...  
 此機用...  
 此機用...



第五十八圖

主排永余 縮尺四分一

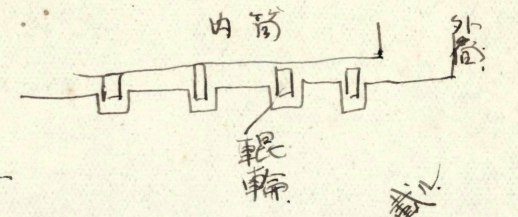
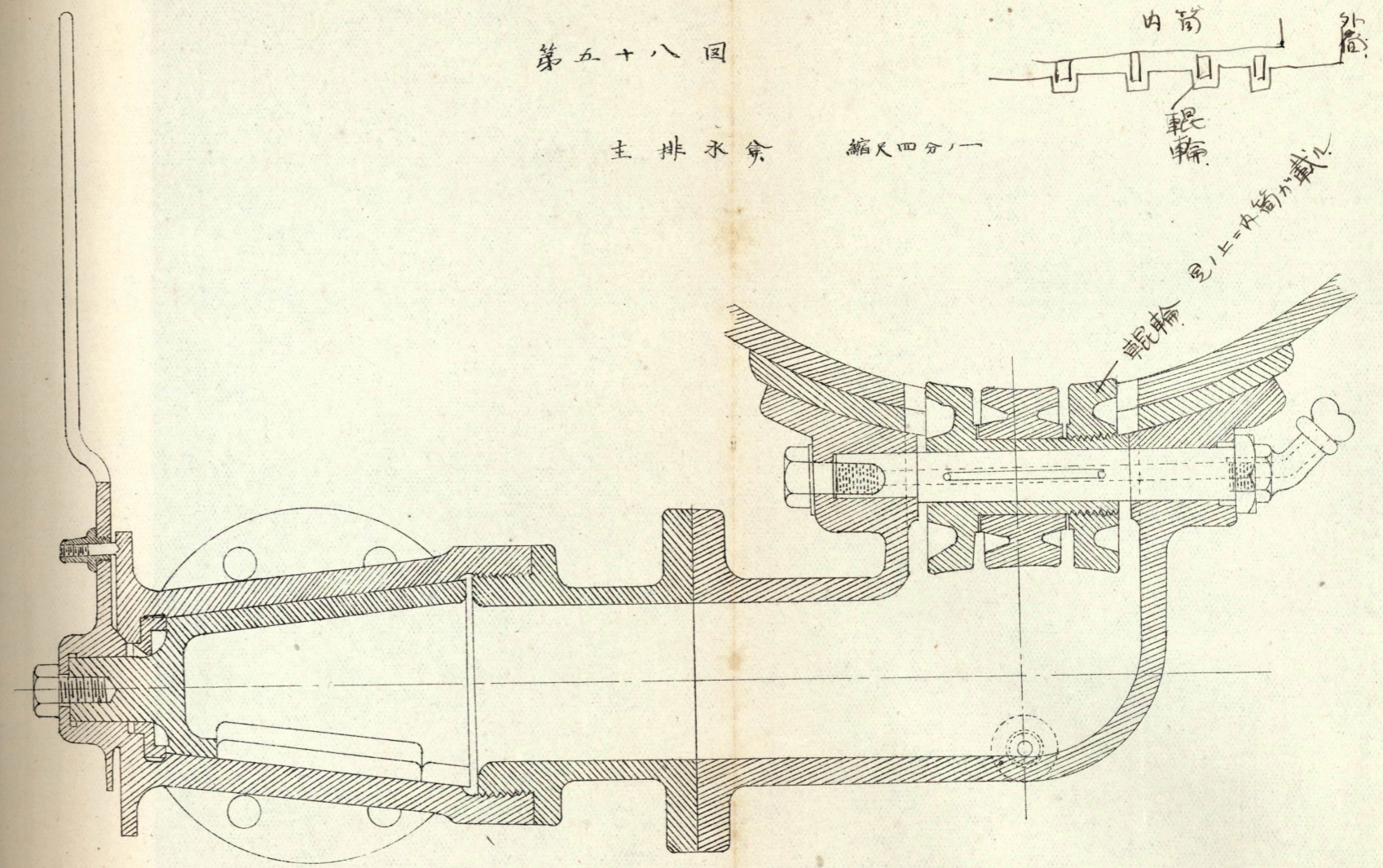
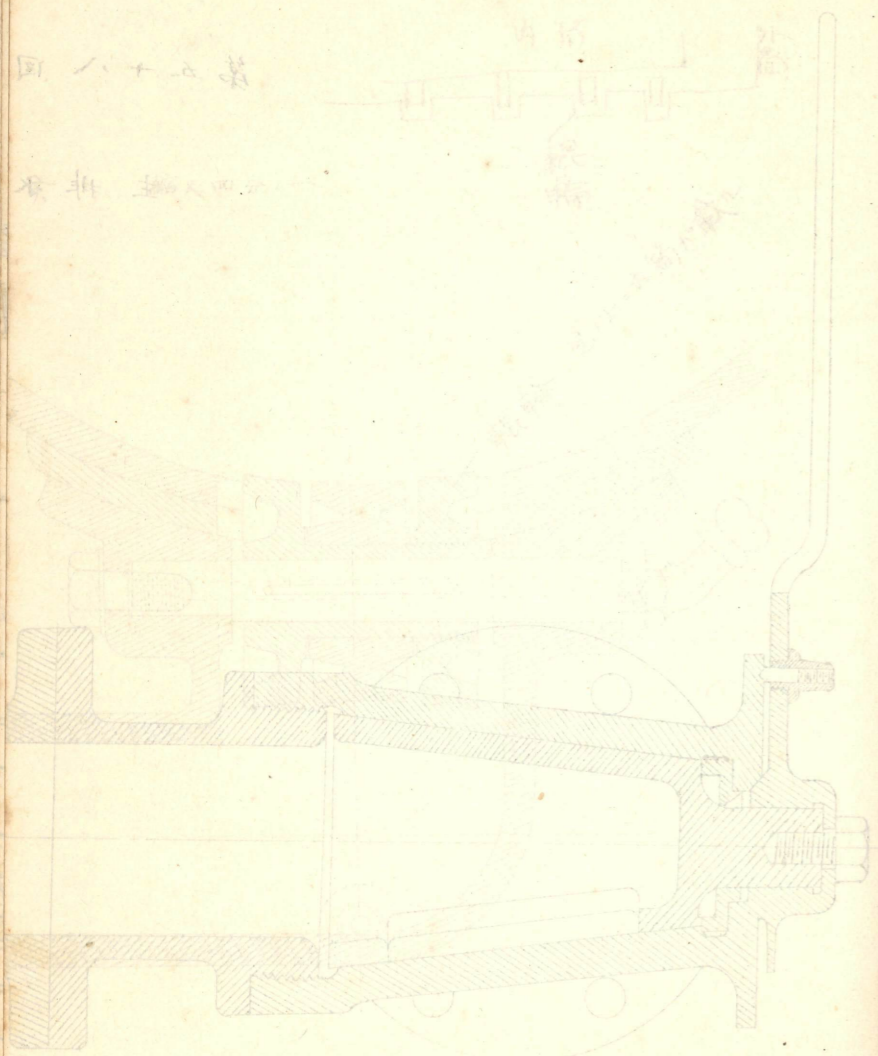


圖1上=A筒加載  
 鞆輪



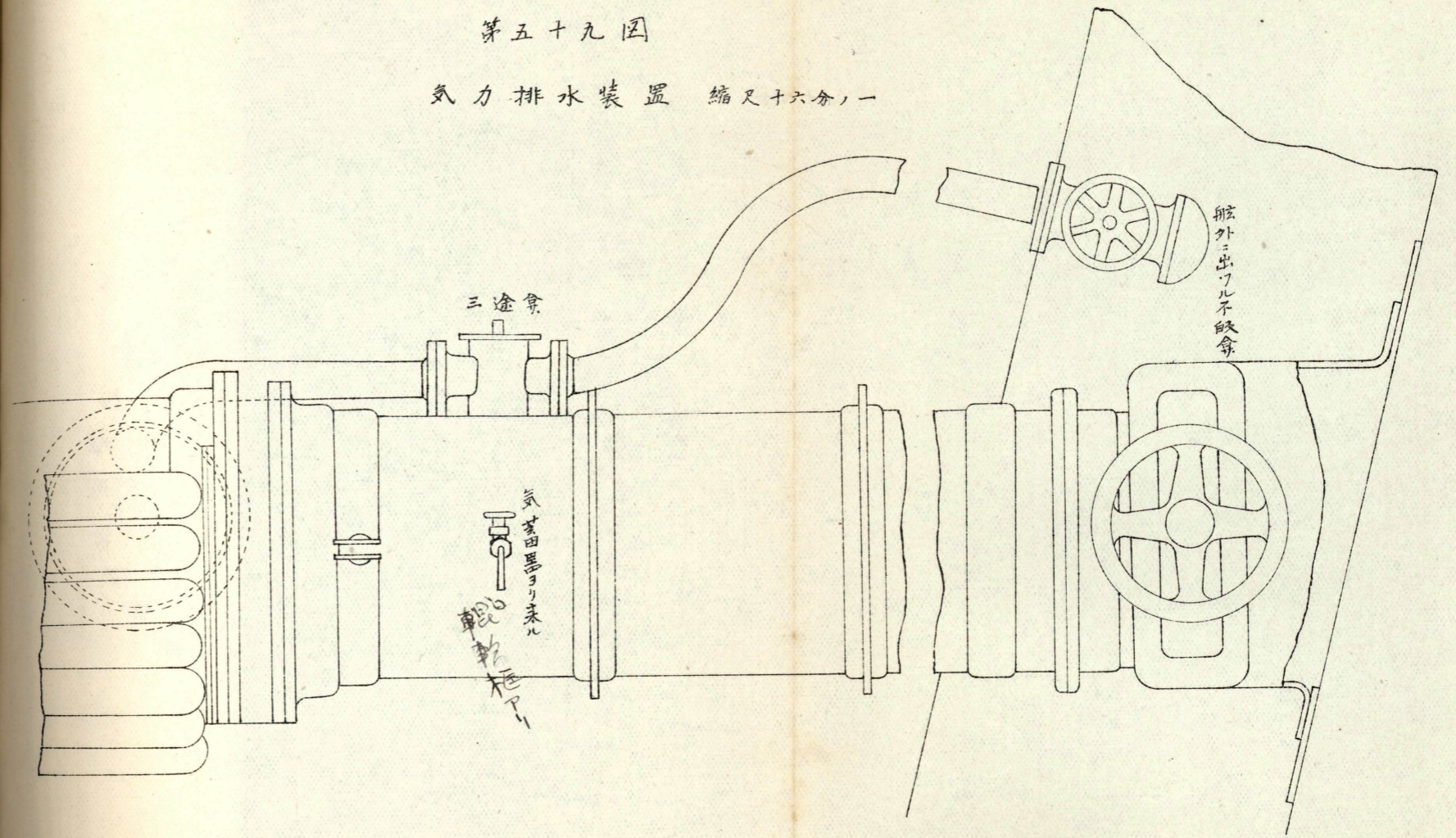
同六十五番

有折 抽入也



第五十九図

気力排水装置 縮尺十六分の一



三途弁

気力排水装置  
観覧用

舷外ニ出ワル不絞弁

圖五十五

汽機 凝結器 水封 裝置

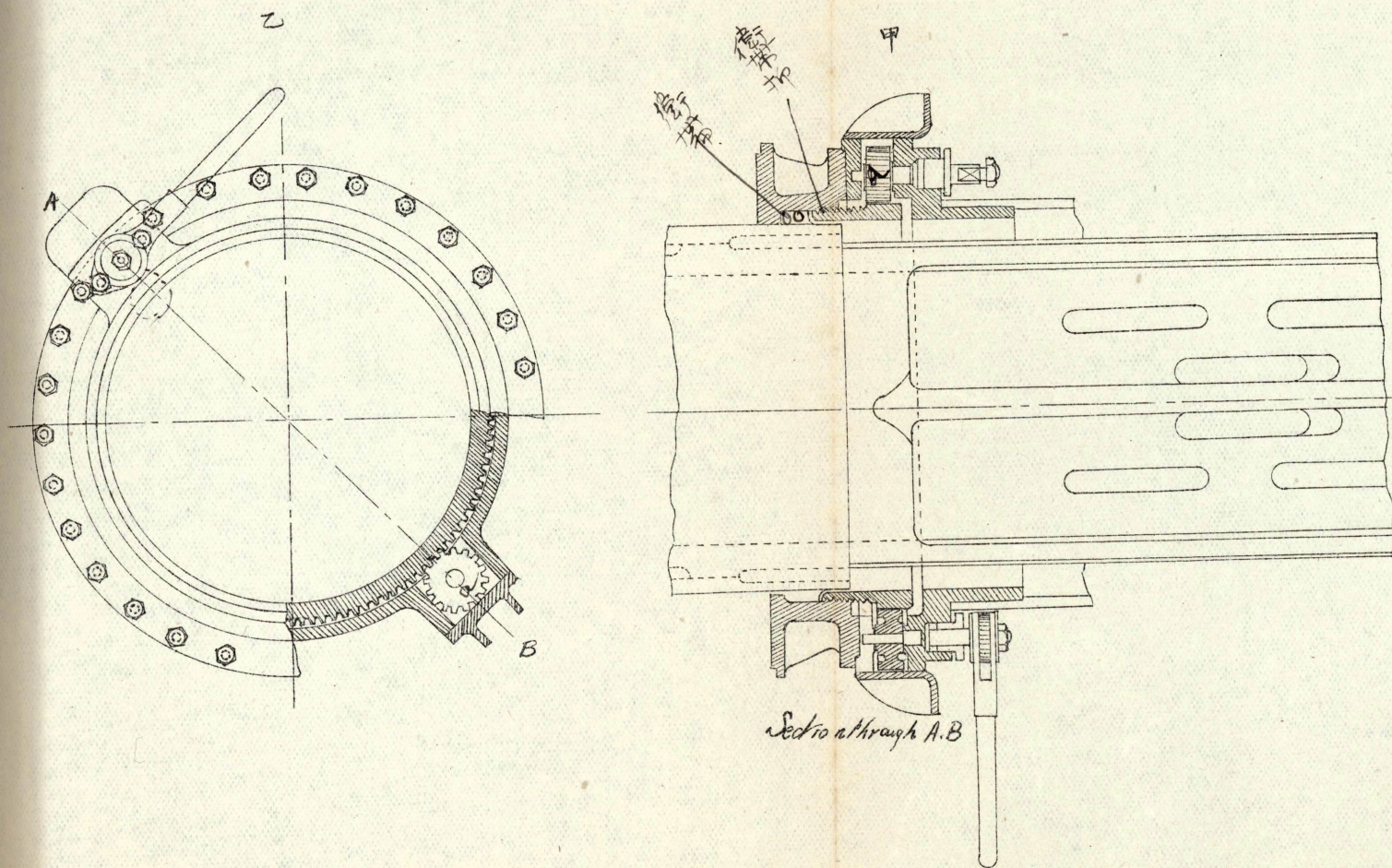
圖五十五

汽機 凝結器 水封 裝置

第六十圖

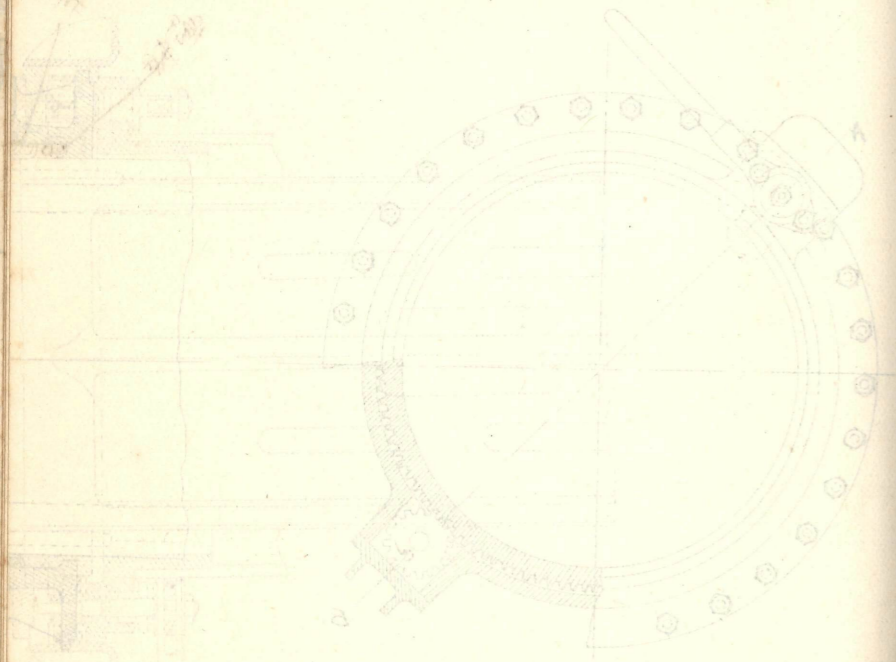
衛帶筐

縮尺十二分一



圖十六

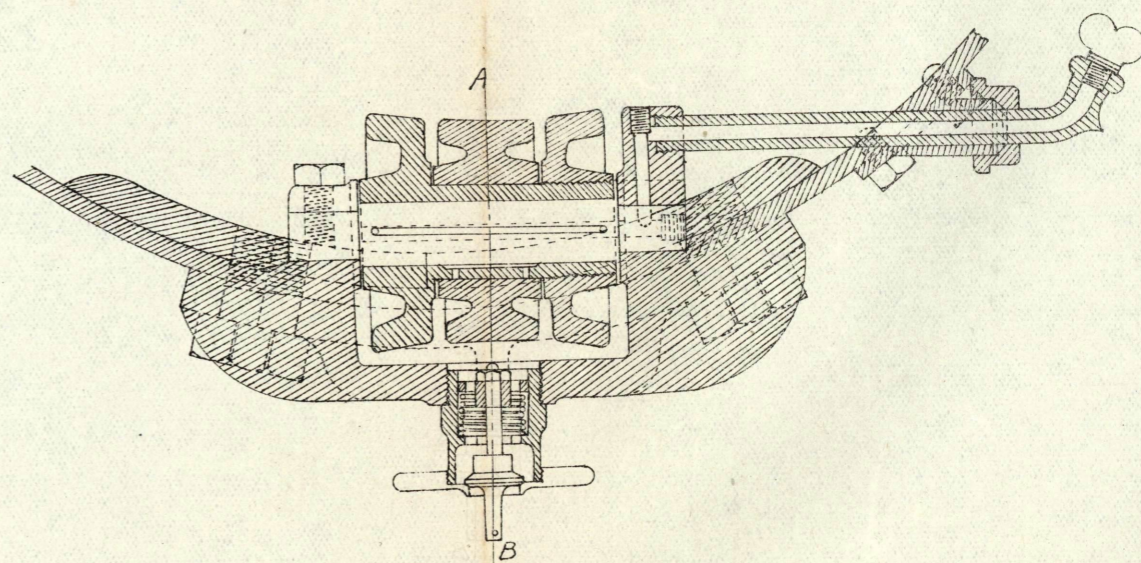
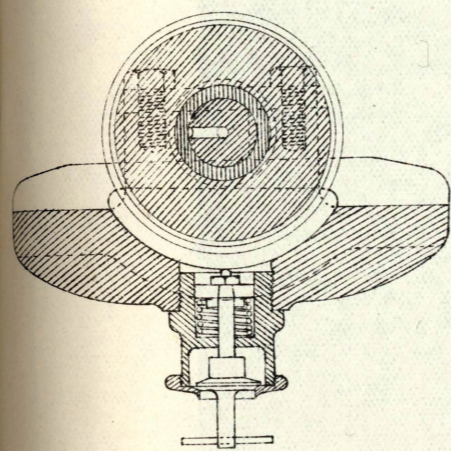
齒輪

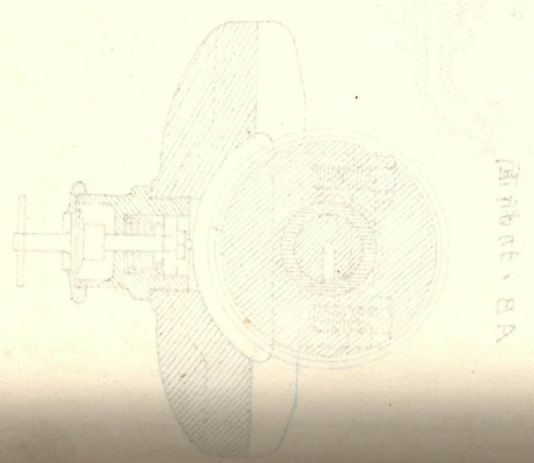


第六十一圖

後外筒輥輪及小排水傘 縮尺四分一

AB, 切断面

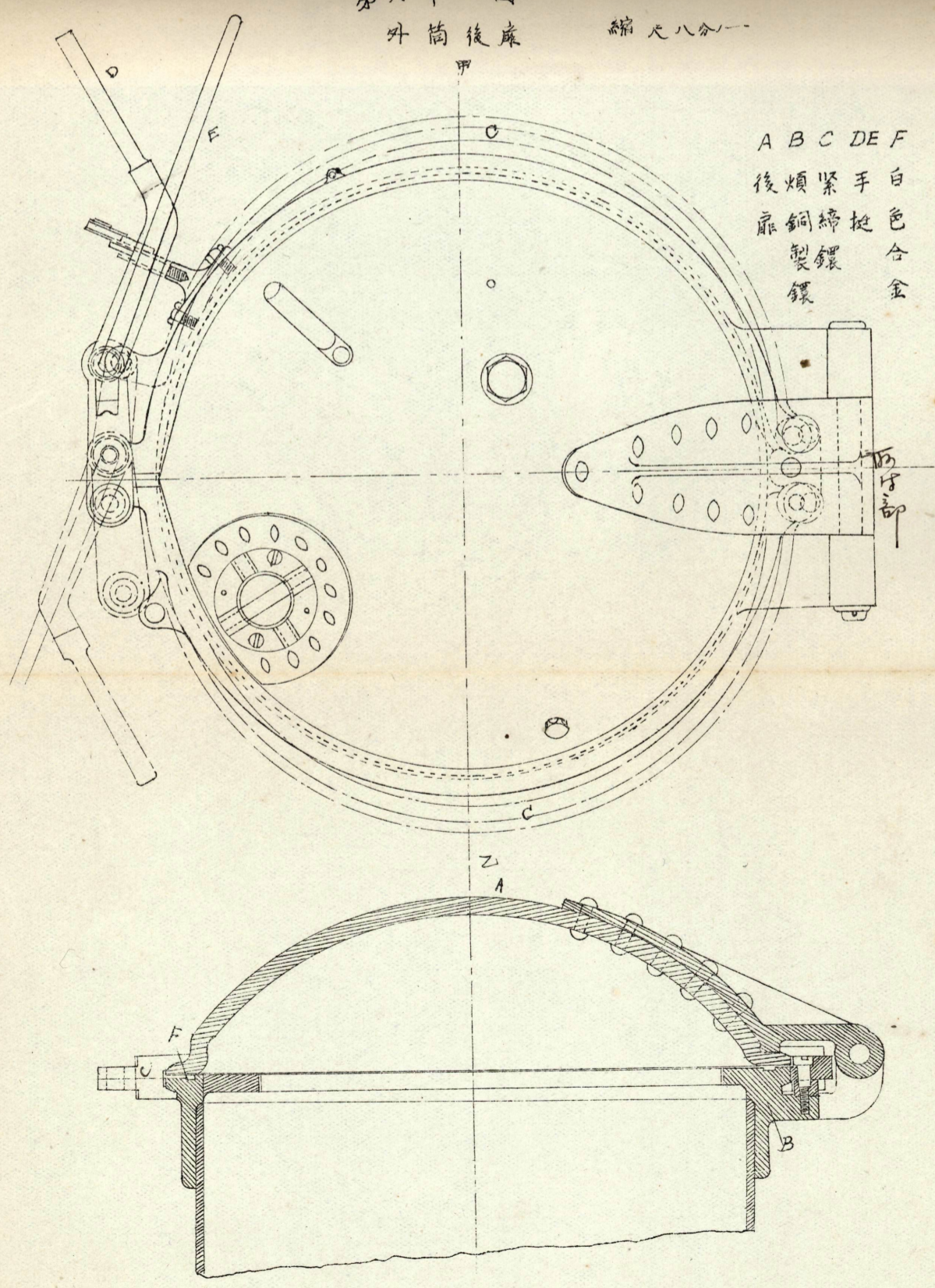




圖一十六第

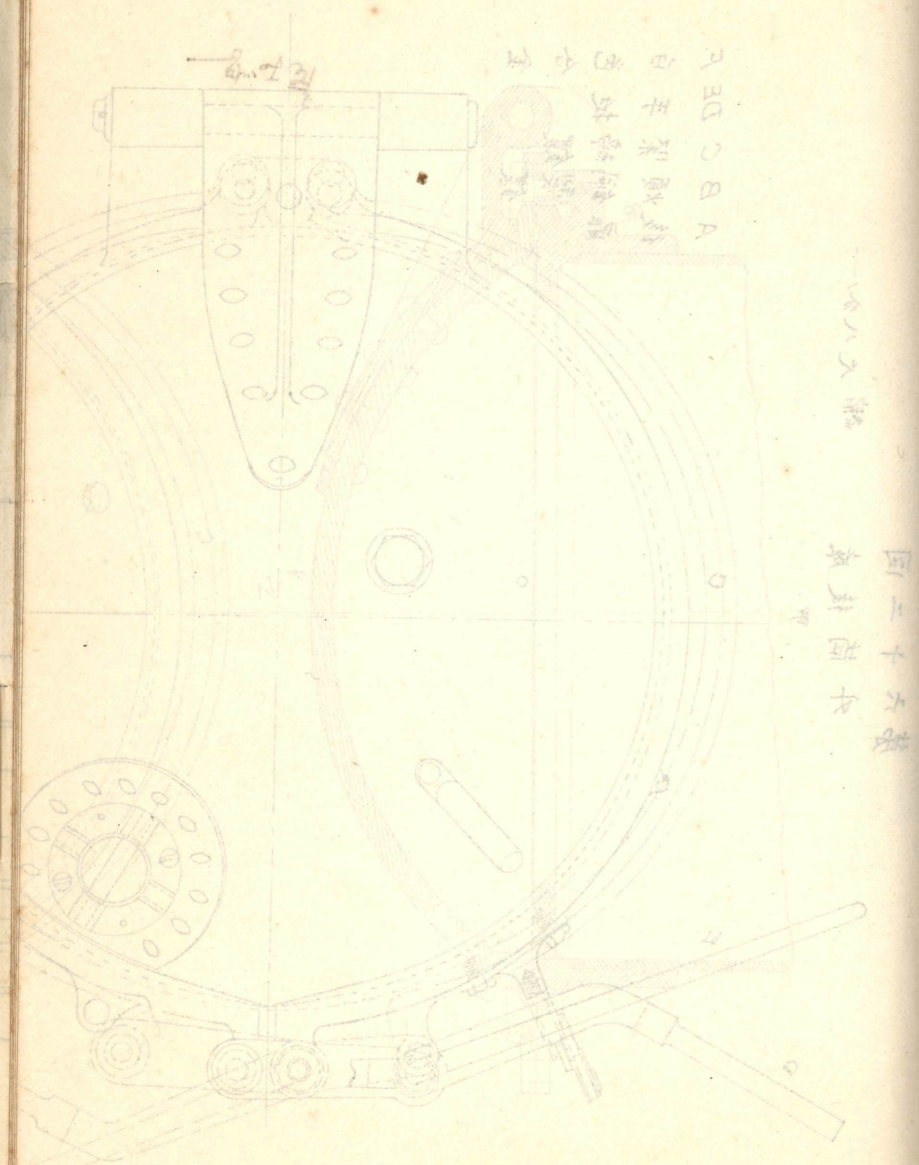
第六十二圖  
外筒後座

縮尺八分一



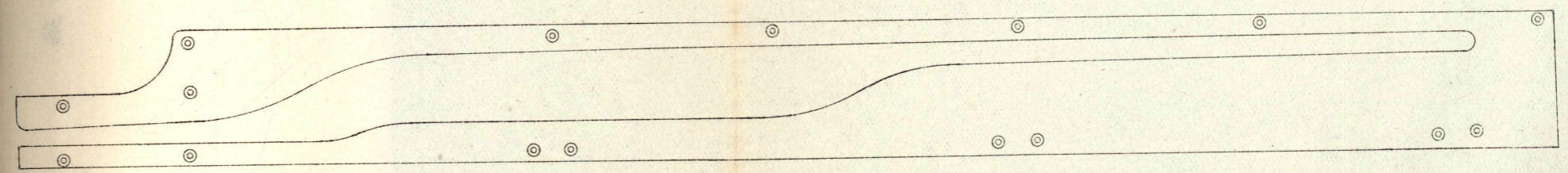
A B C D E F  
後座 銅製 緊鑲 手扳 白色 合金

手扳部



第六十三圖

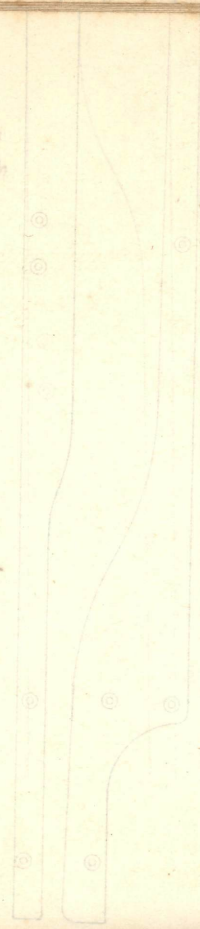
余旋導板 縮尺十分之一



進出之時，孔下通，泥下前進。  
向退之時，孔上通，泥下退却。

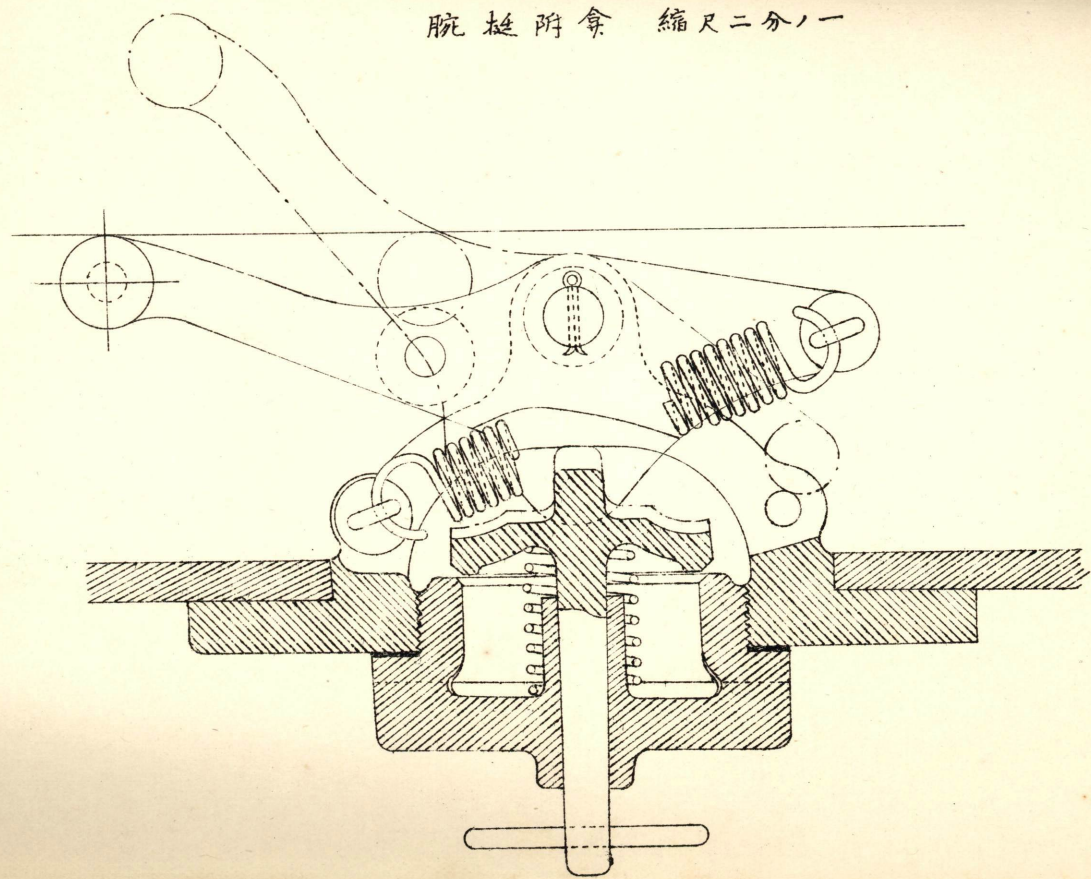
圖十六

新式... 陸軍...



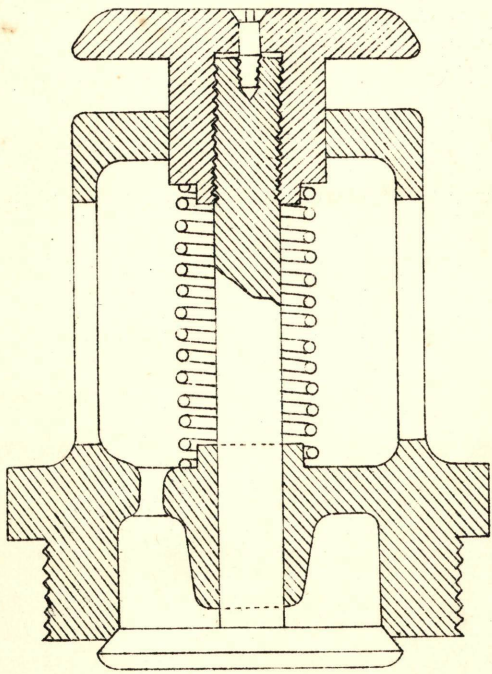
第六十四圖

腕挺附傘 縮尺二分一



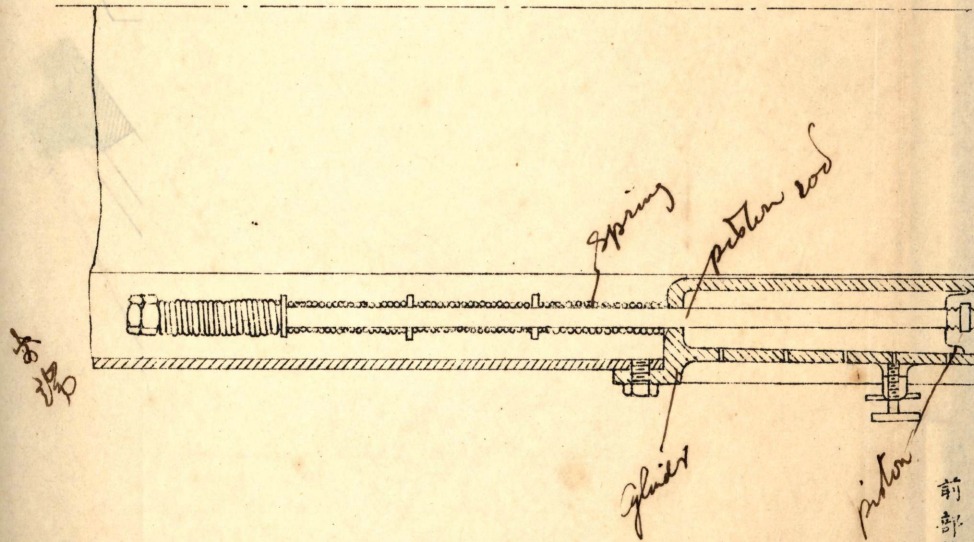
第六十五圖

大氣余現圖



AB 斷

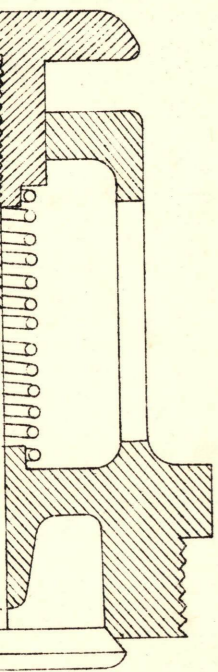
20 49



前部外筒



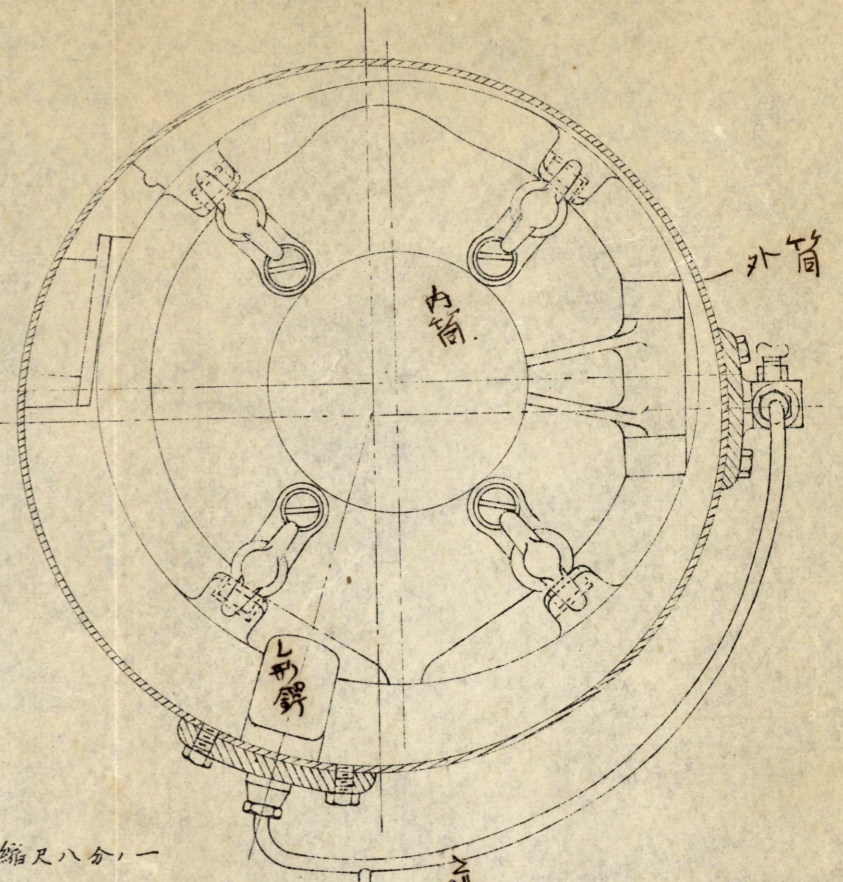
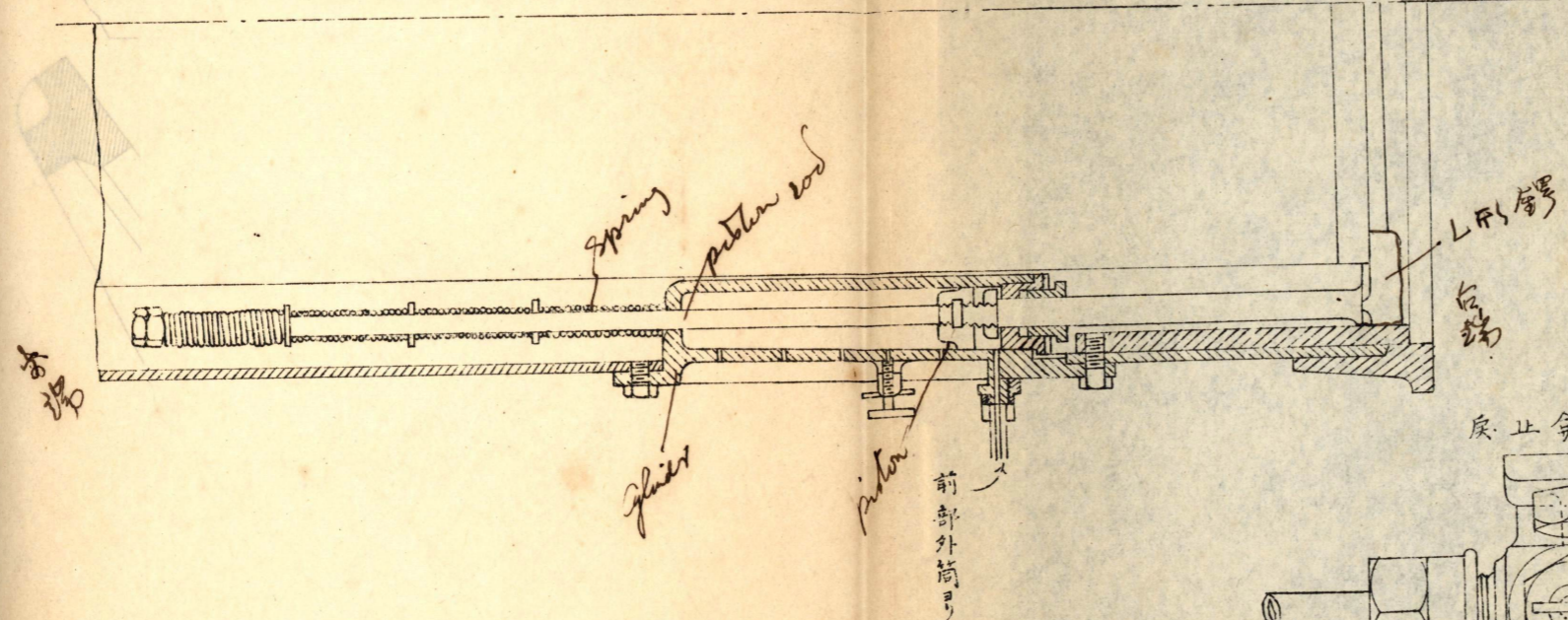
圖  
現圖



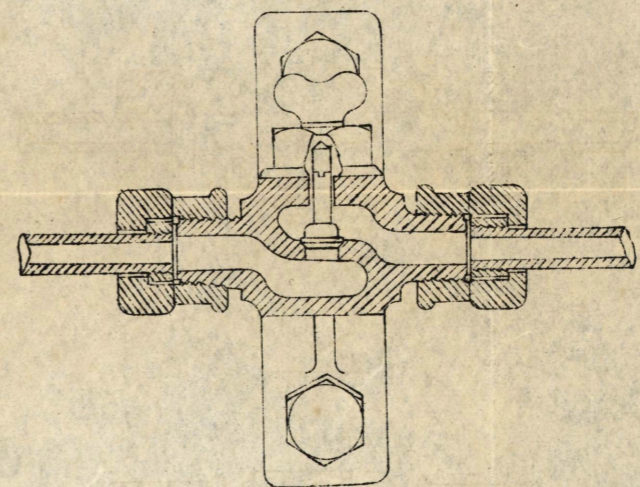
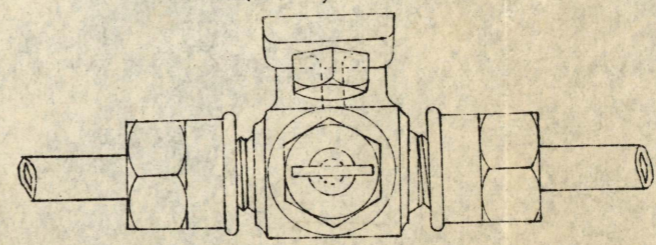
AB斷  
I > Fy

第六十六圖

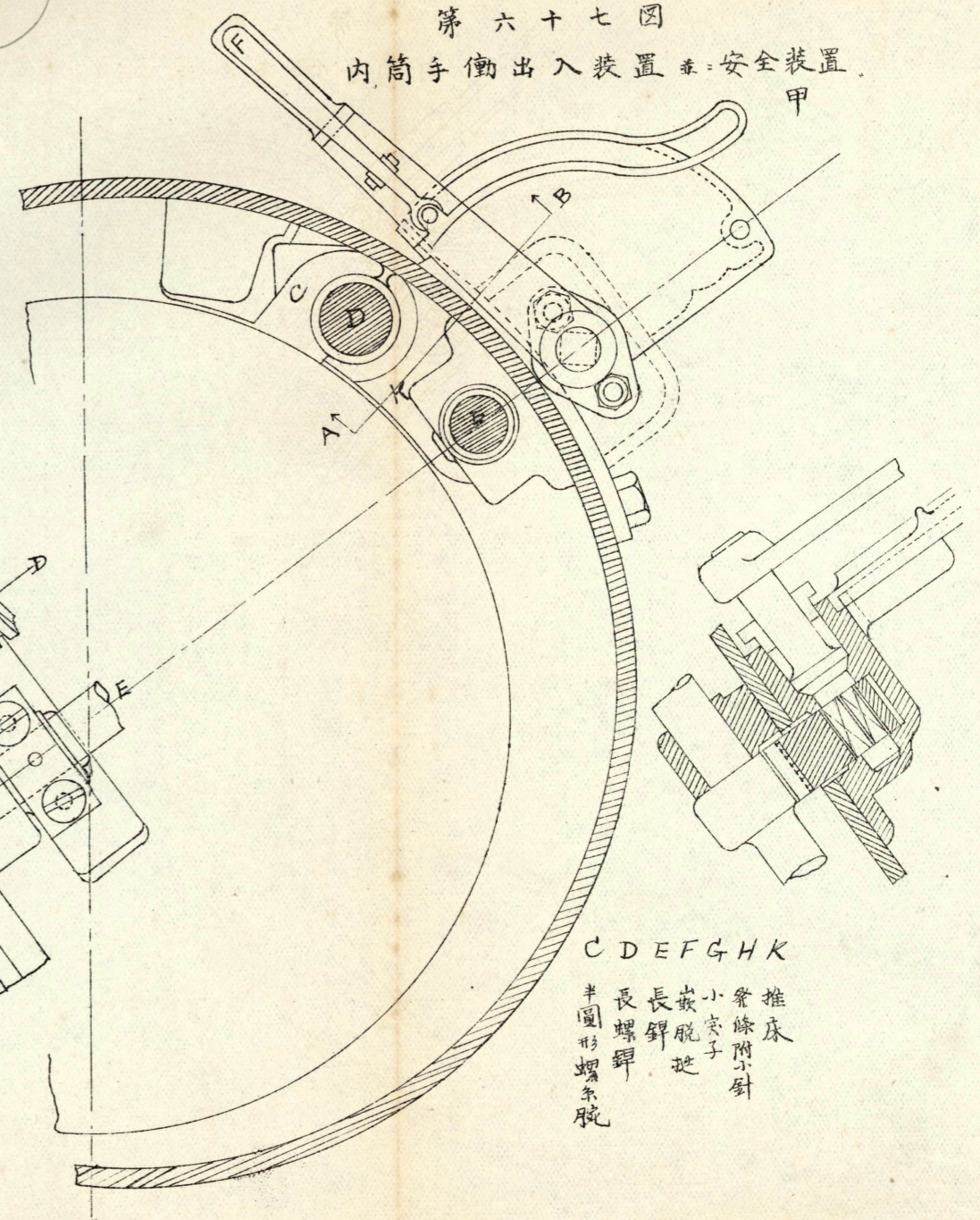
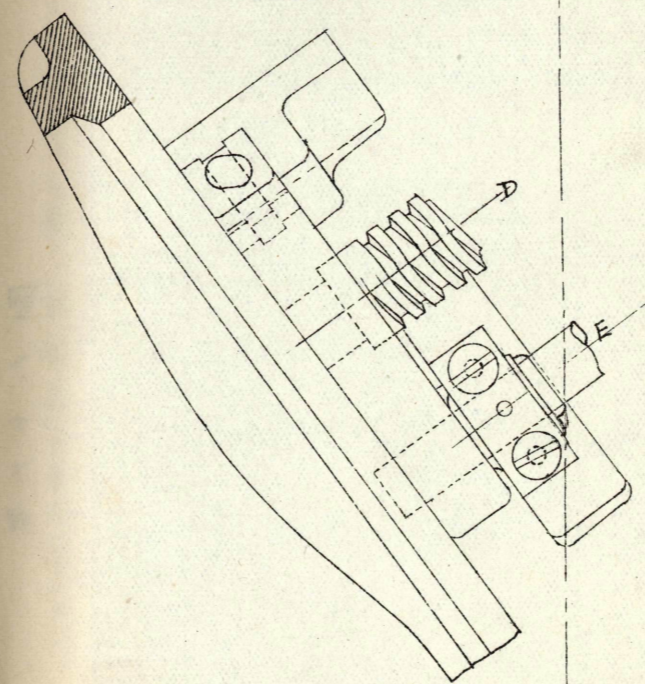
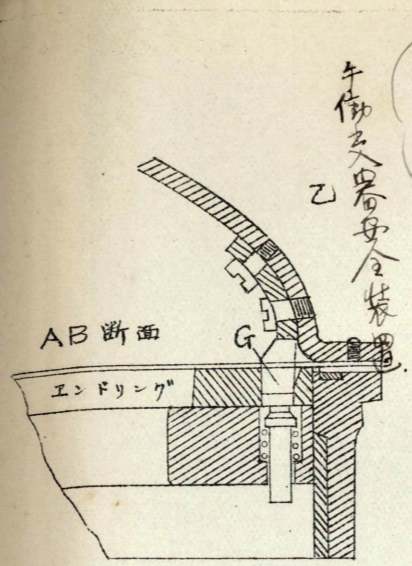
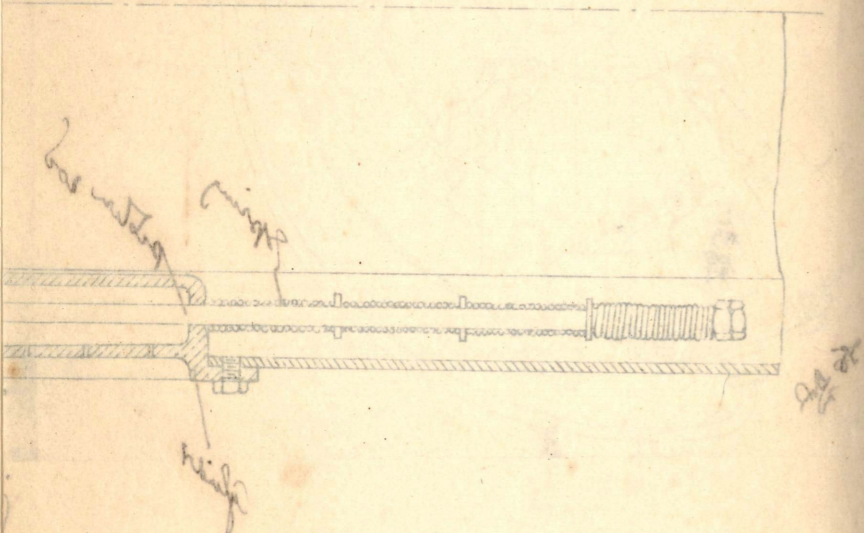
水壓駐退器 縮尺八分一



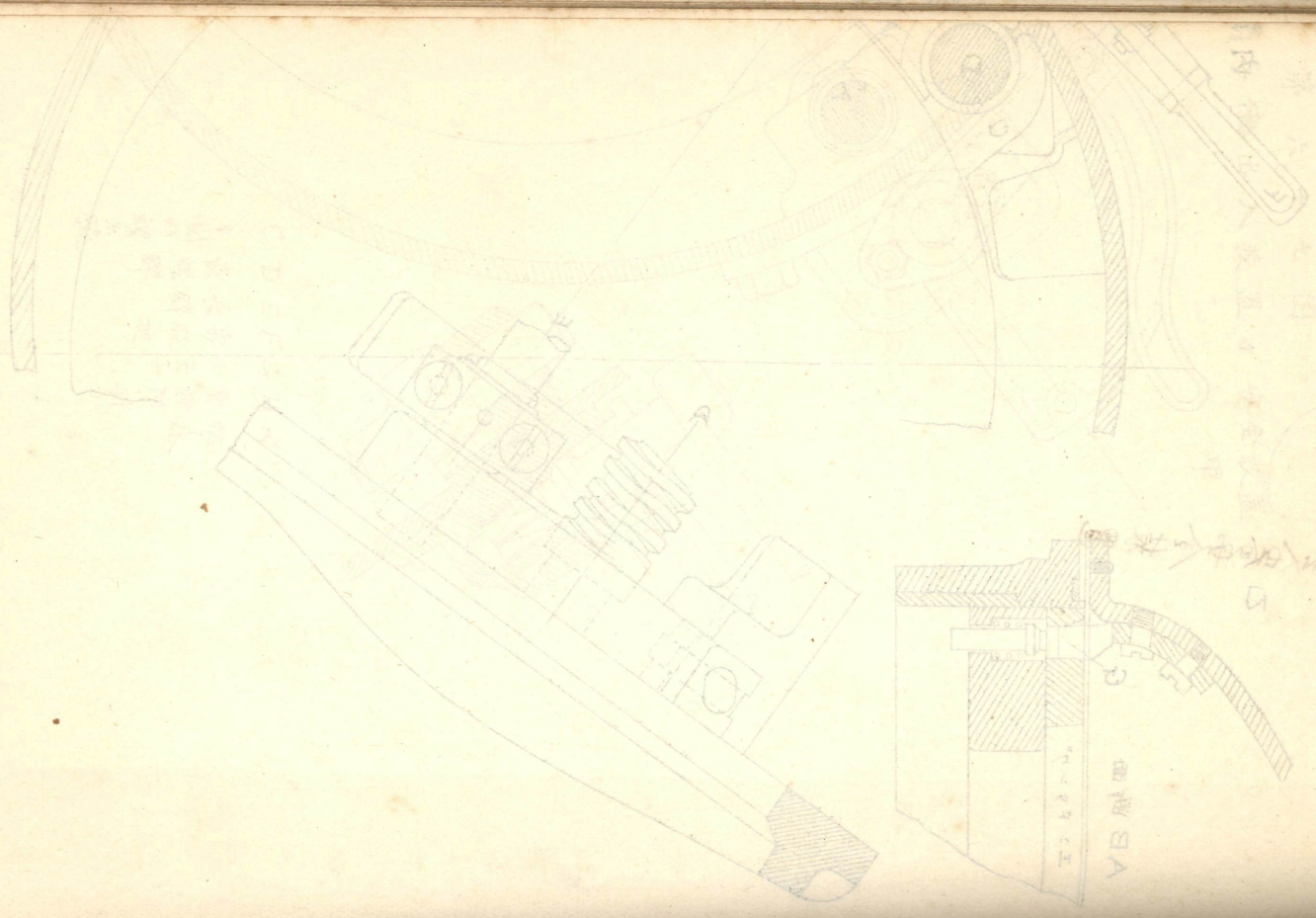
停止余 縮尺八分一



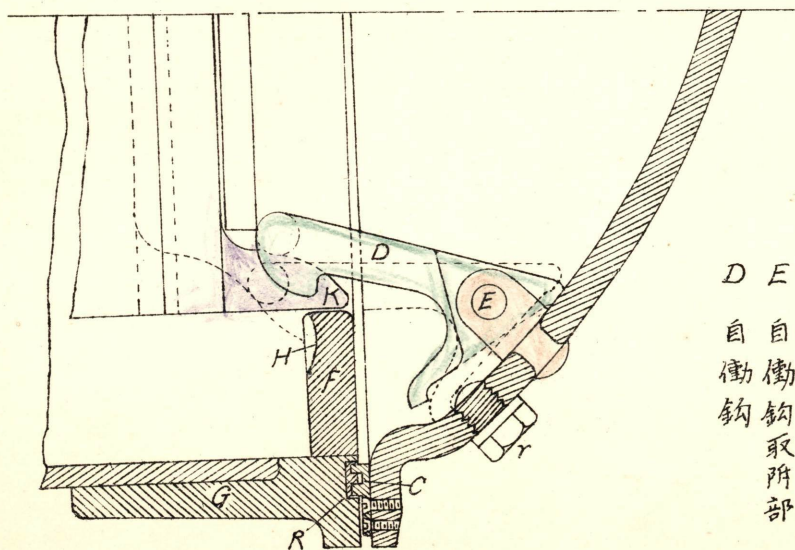
排水  
前部外筒  
L形鋼



C D E F G H K  
 半圓形螺絲腕  
 長螺絲  
 長螺絲  
 嵌脫匙  
 小尖子  
 發條附針  
 推床



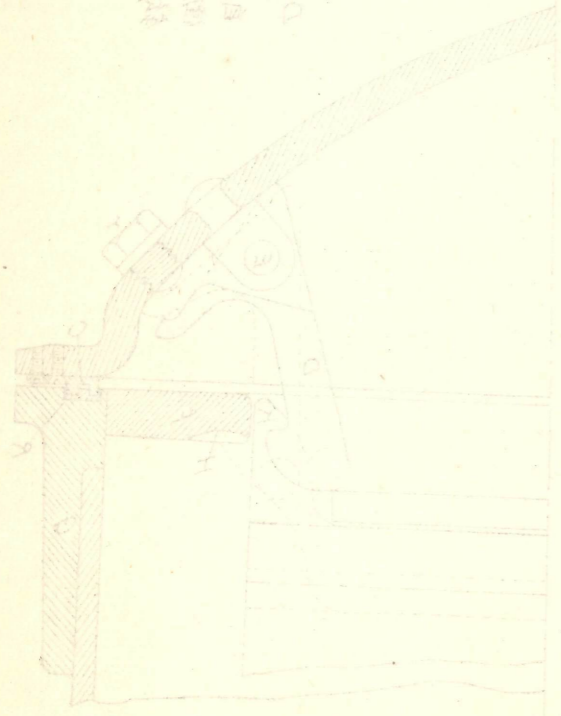
第六十八圖  
外筒後座安全裝置 縮尺四分一



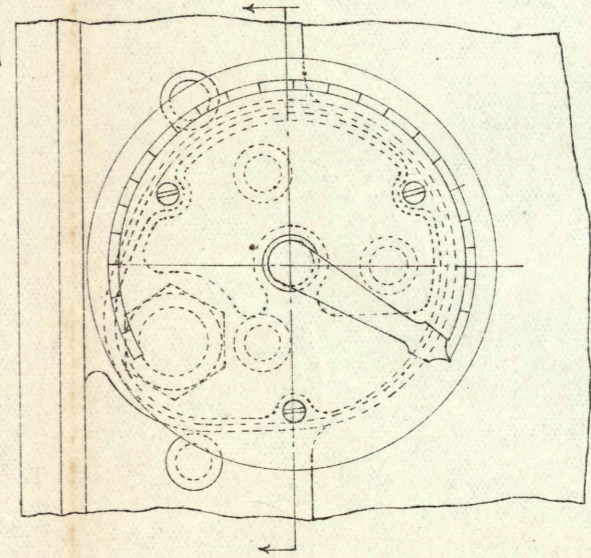
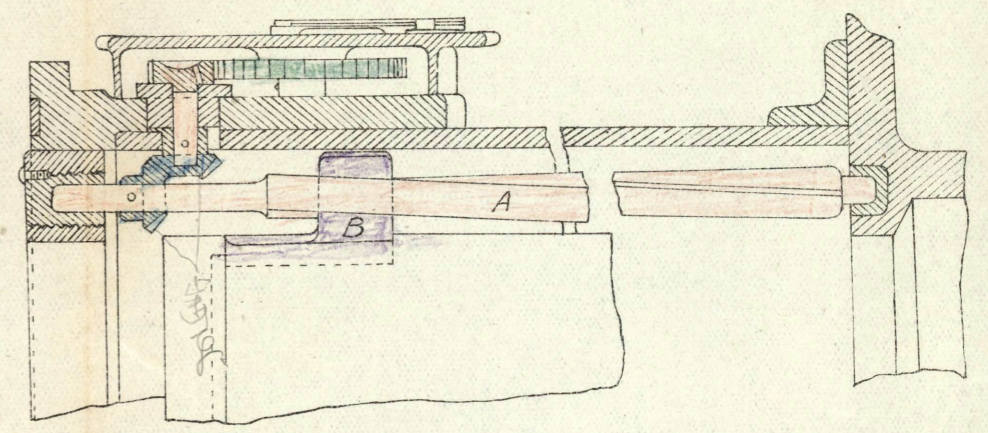
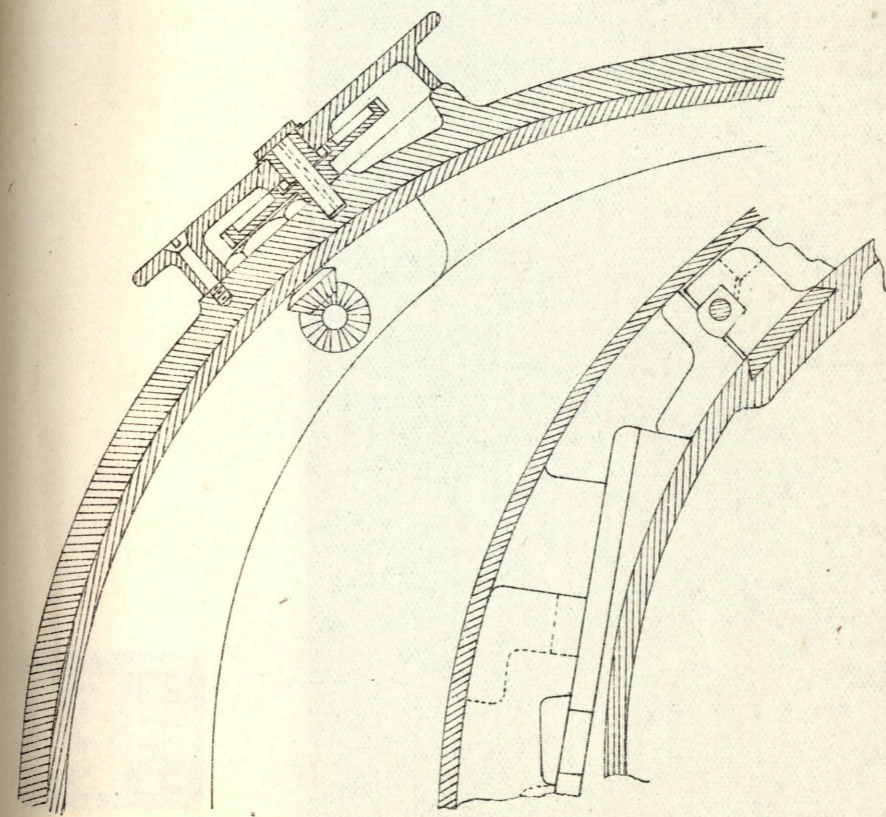
D 自衝鉤  
E 自衝鉤取附部  
F 煩銅製鑲  
K 門筒後端，斜面

第六十九圖  
 內筒位置指示器 縮尺八分一

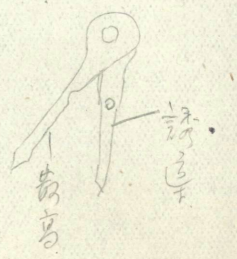
自前內筒  
 自前外筒  
 自前螺絲  
 自前螺絲

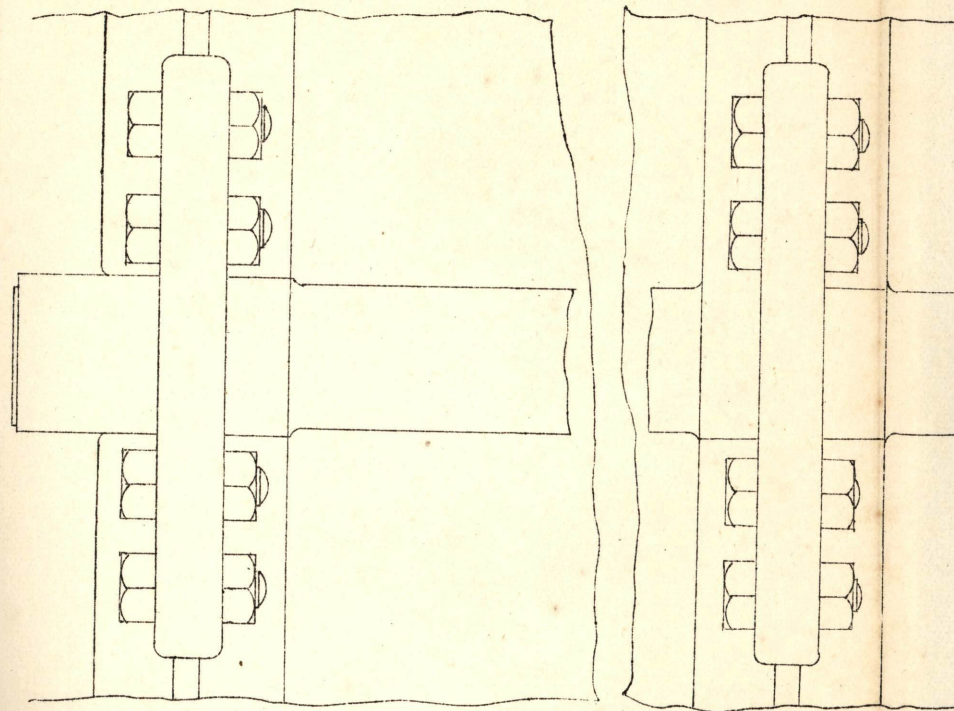


圖八十六  
 螺絲全母螺絲筒

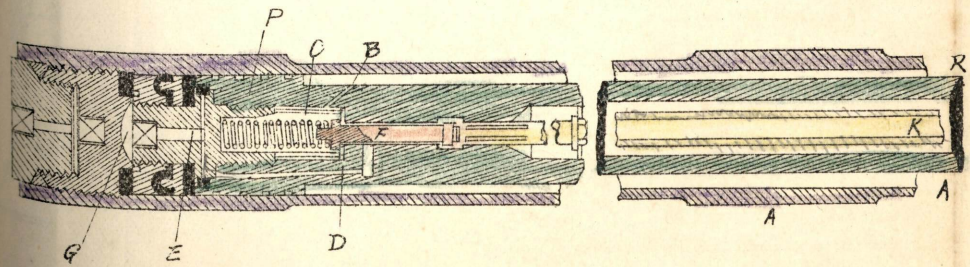


A B  
 螺母  
 螺

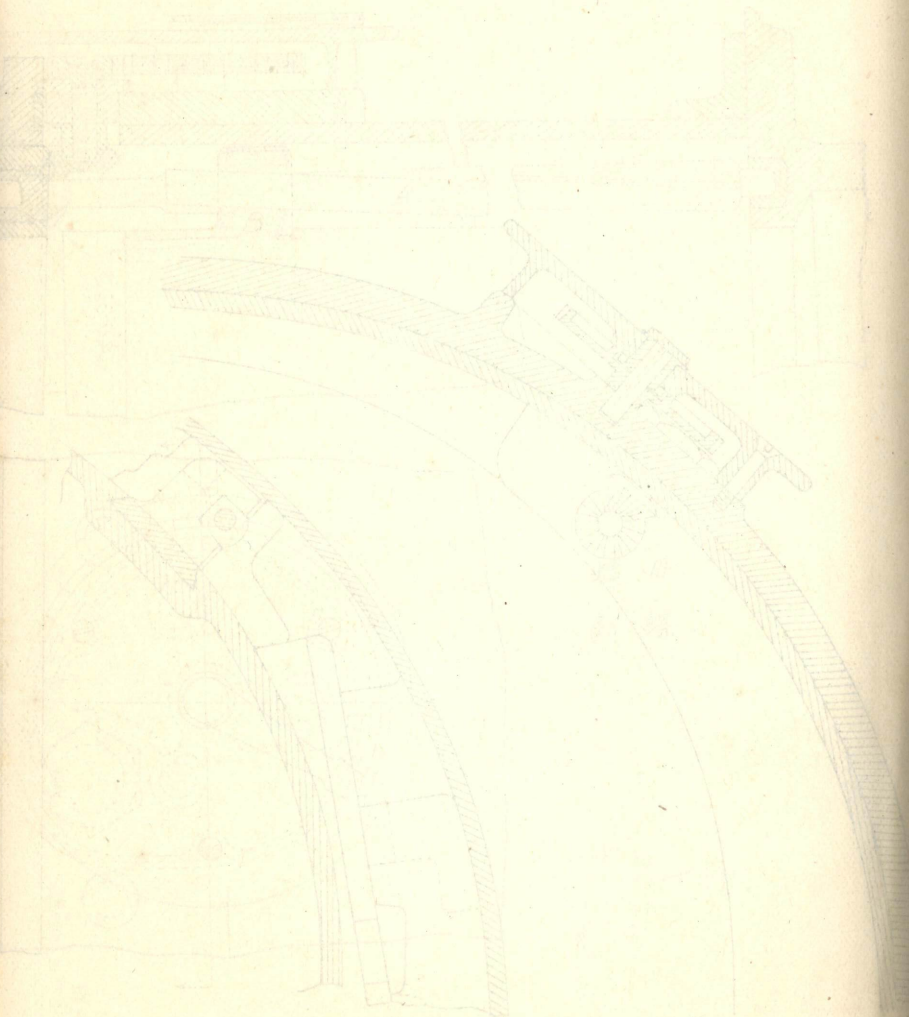




前



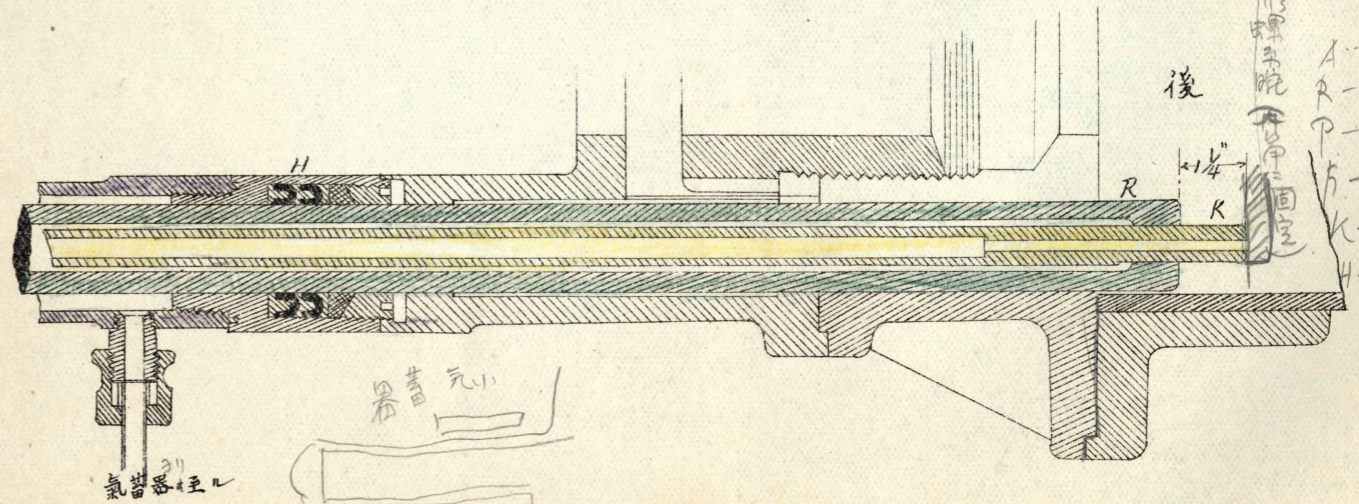
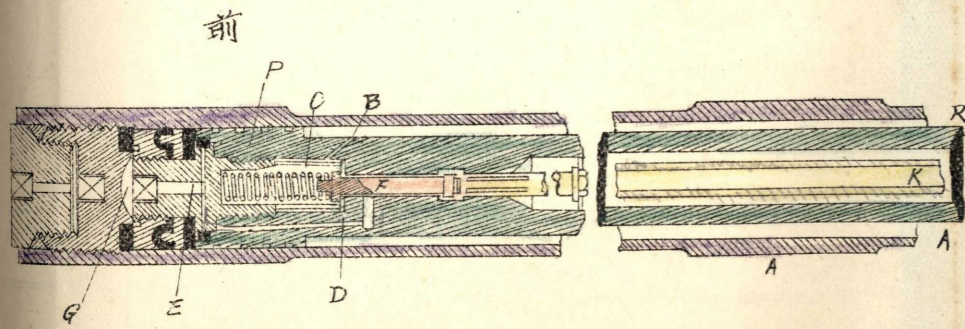
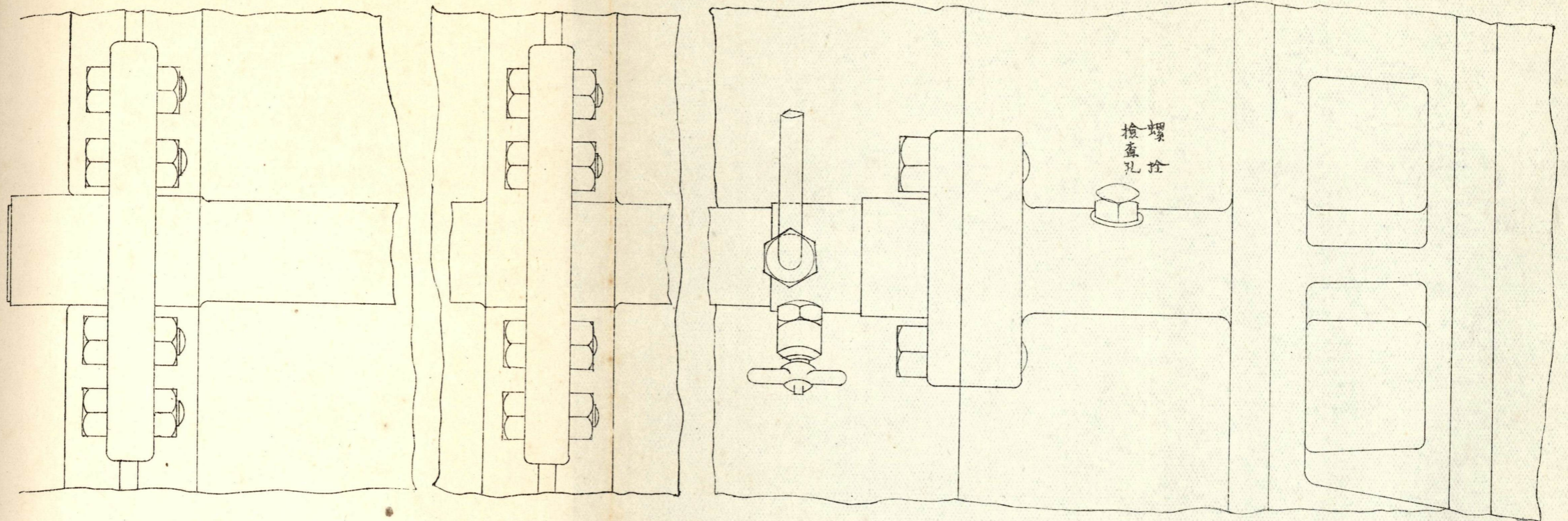
圖五十六  
筒自



第七十圖

內筒自動退却裝置

縮尺四分之



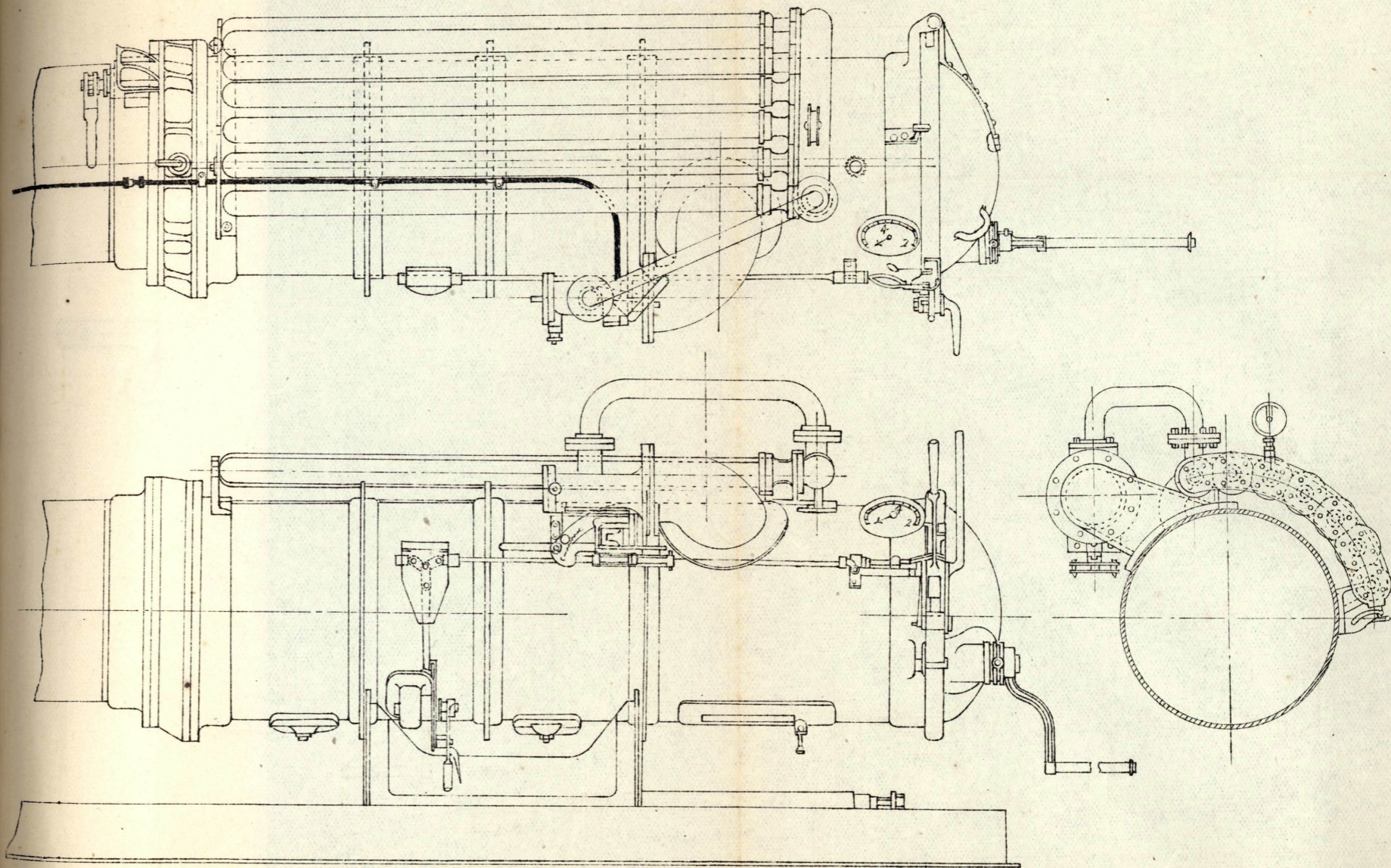
- A-瓦角
- R-擋桿
- P-腳子
- K-命桿
- H-衛帶

檢査孔

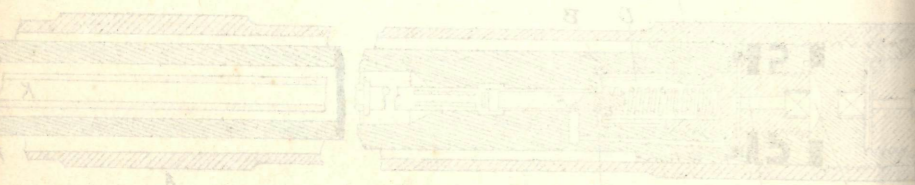
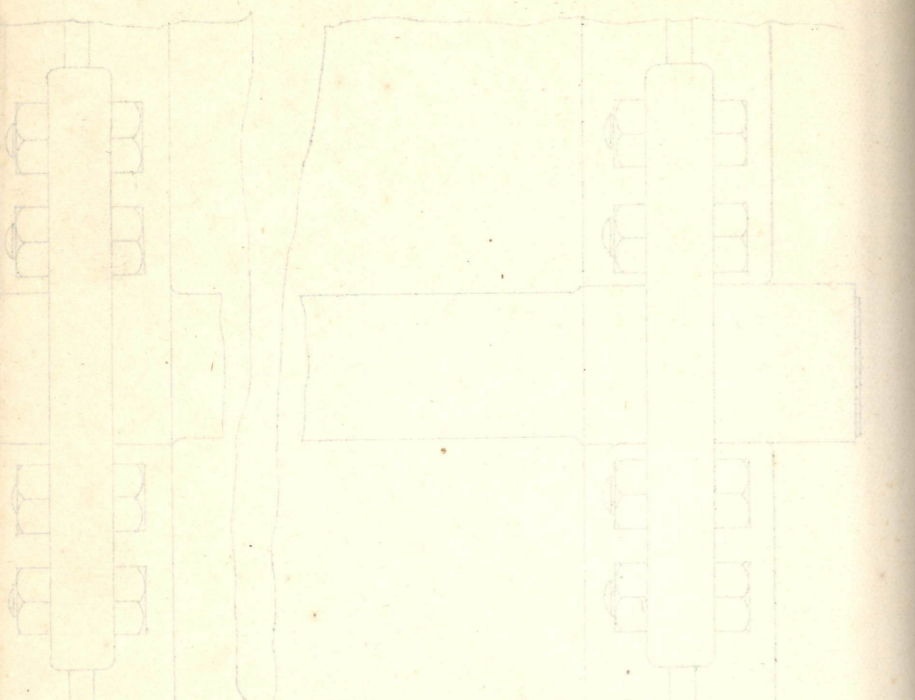
檢査孔

第七十一圖

氣蓄器 縮尺二十分ノ一

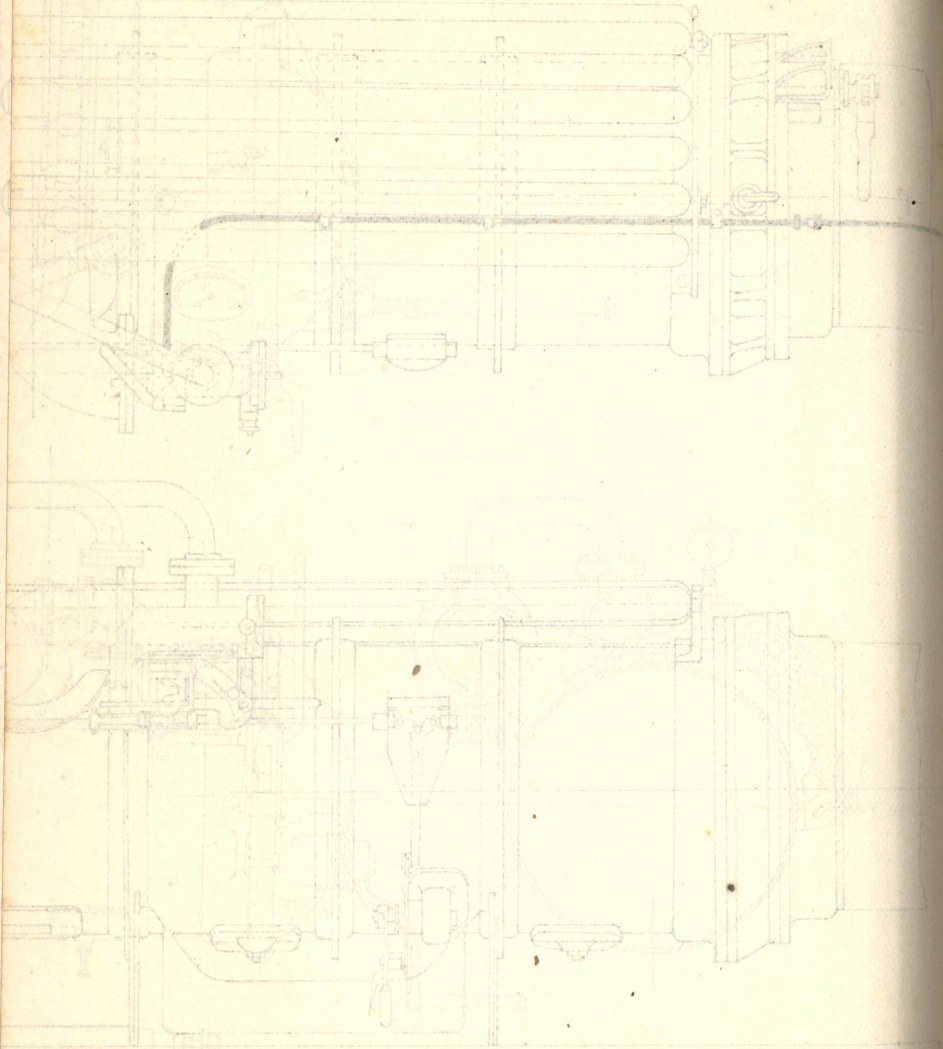


商標



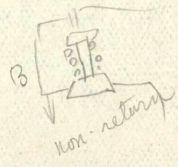
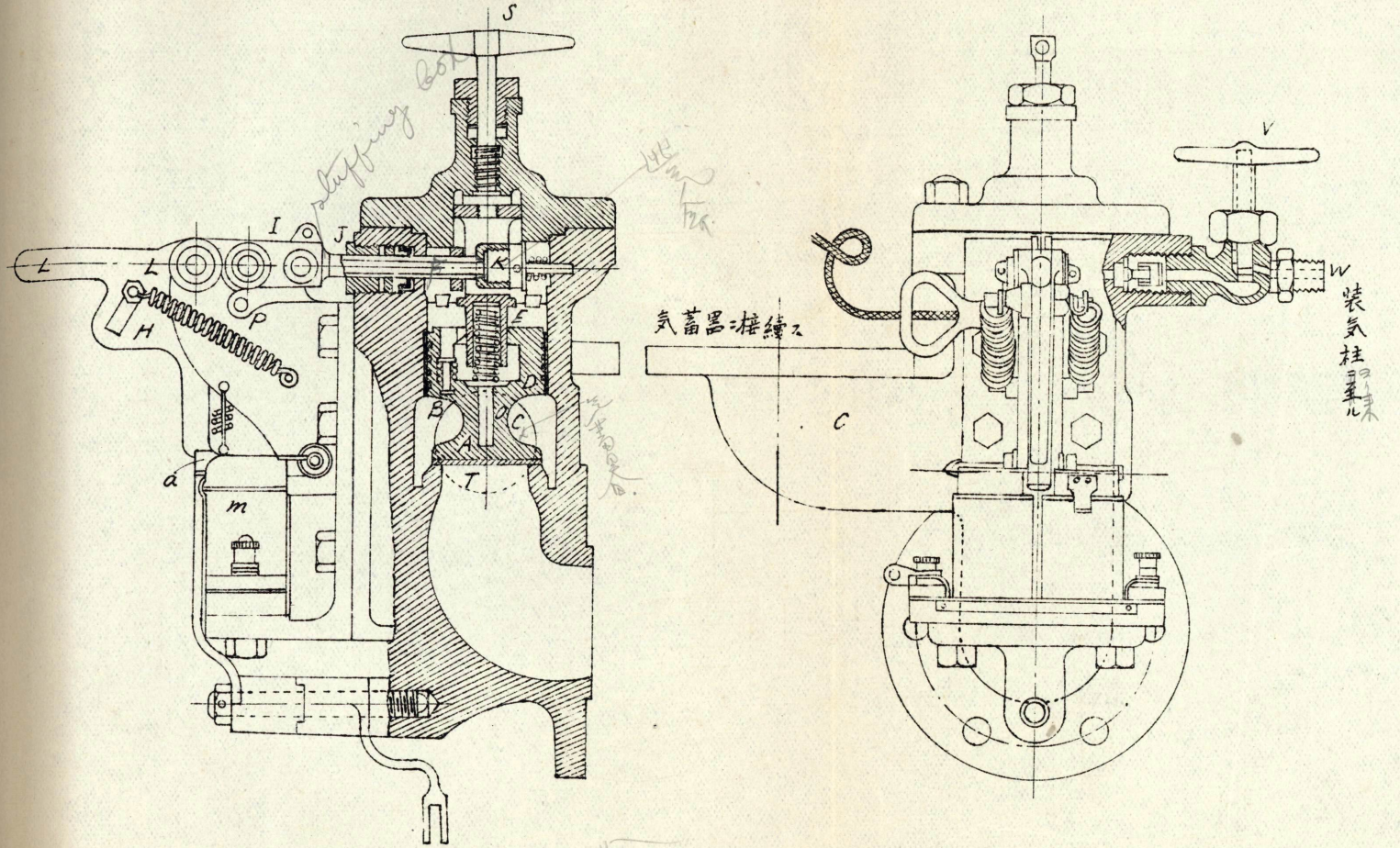
4 號圖

氣蓄器 縮尺二十分之一



第七十二圖

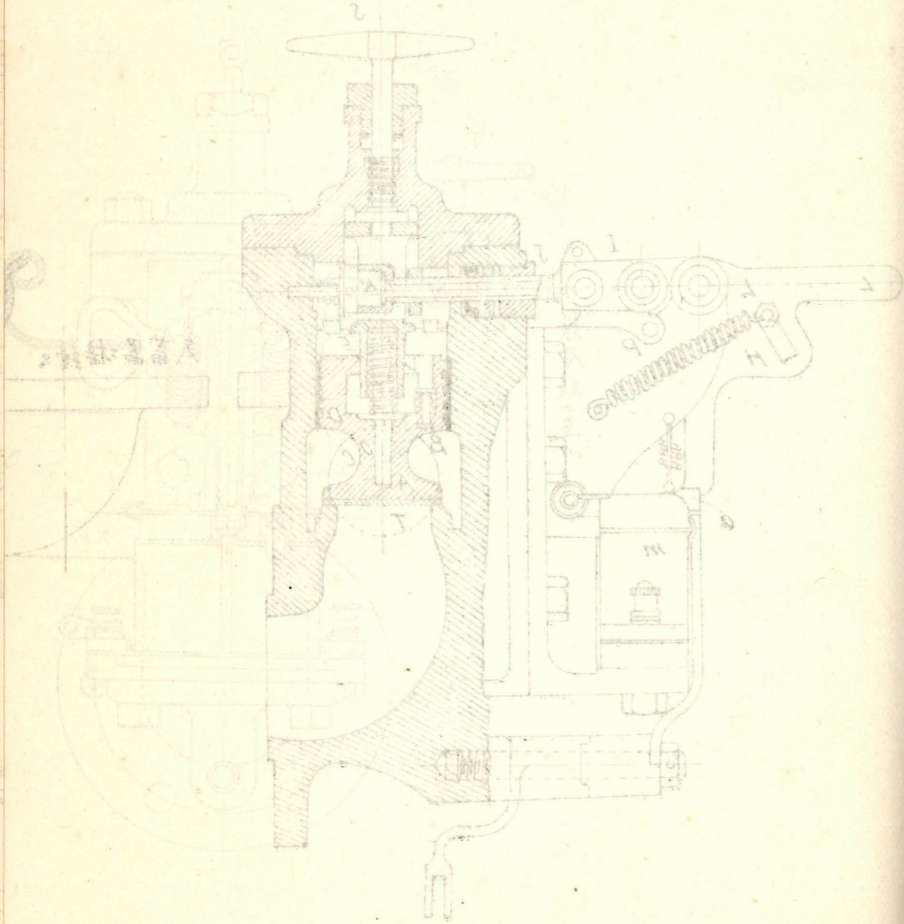
發射傘 縮尺五分一





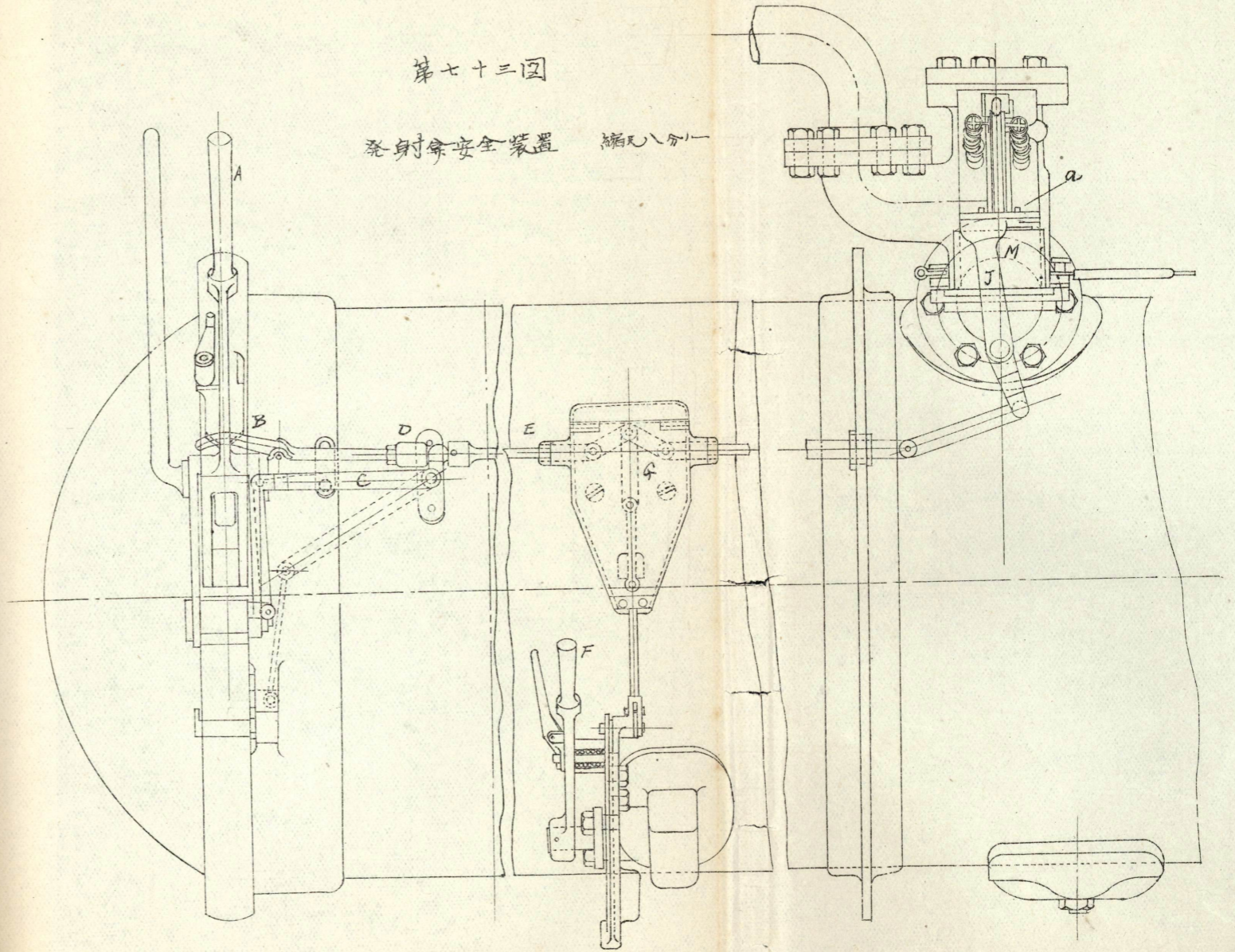
圖二十

汽機一余機裝



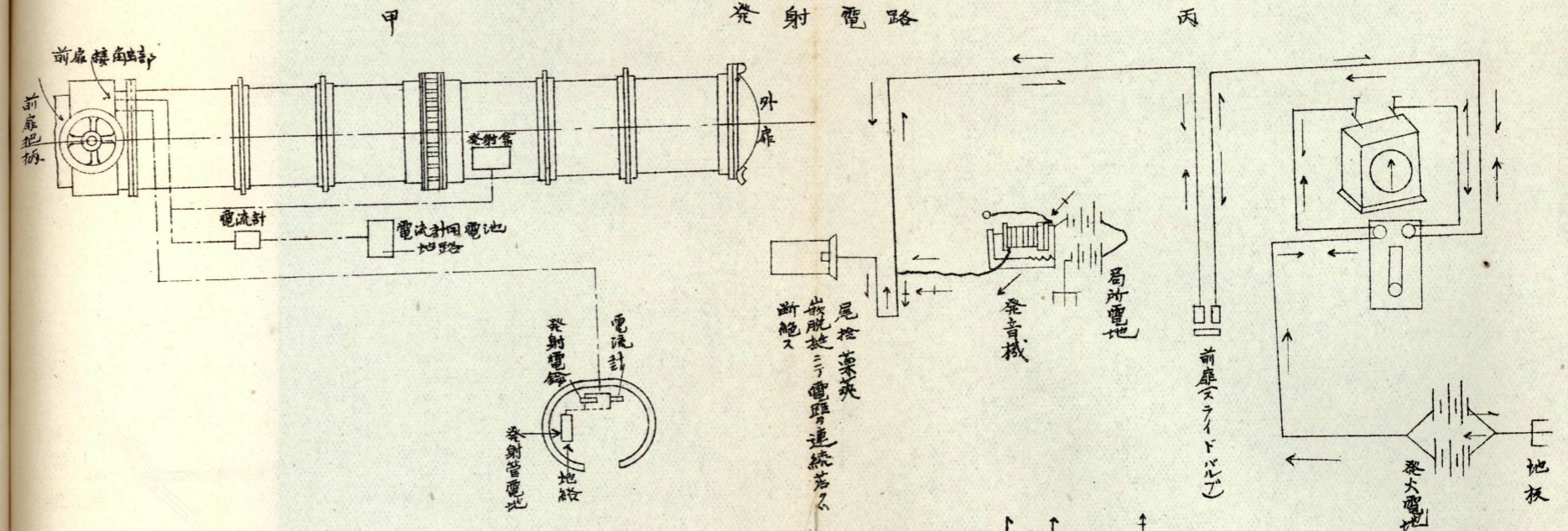
第七十三圖

發射器安全裝置 縮八分一



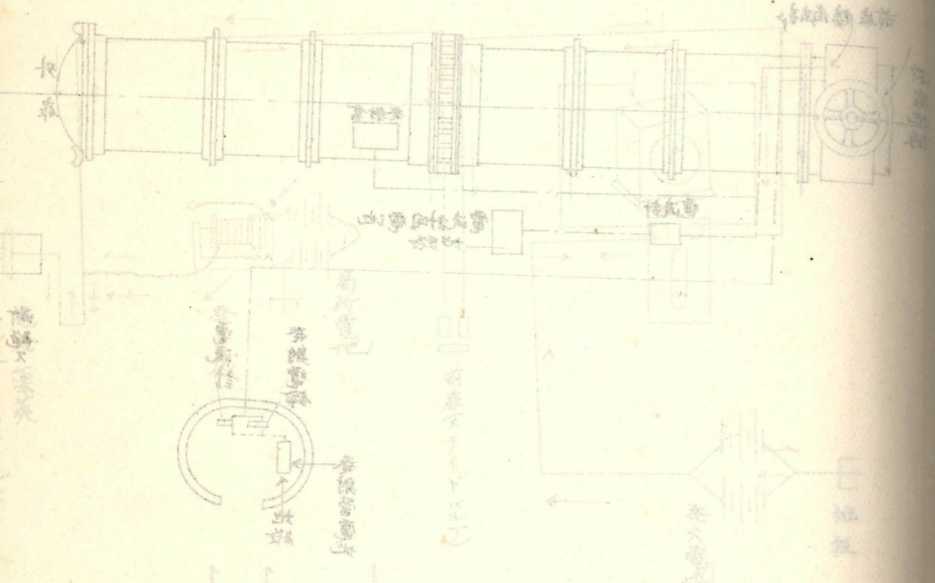
第七十四回

發射電路



↑ハ用意整備、片局所電池發音機は保働  
 用意、整へる示ス  
 備シタル片發大電池、示電器左方ニ偏  
 斜シ  
 ↑ハ前扉ヲ開キ、發音機接線、位置ニテ尾控  
 完備斜ニ前扉全開ヲ示ス  
 ↑ハ前扉ヲ開キ、タル片局所電池、示電器  
 ハ左方ニ

口 英 同  
機 業

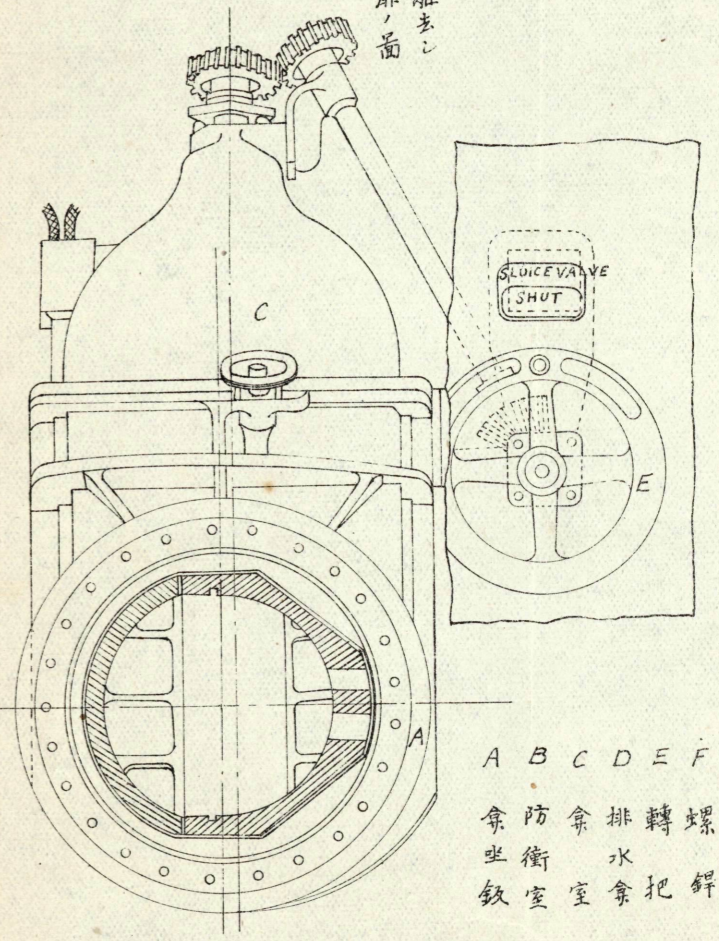
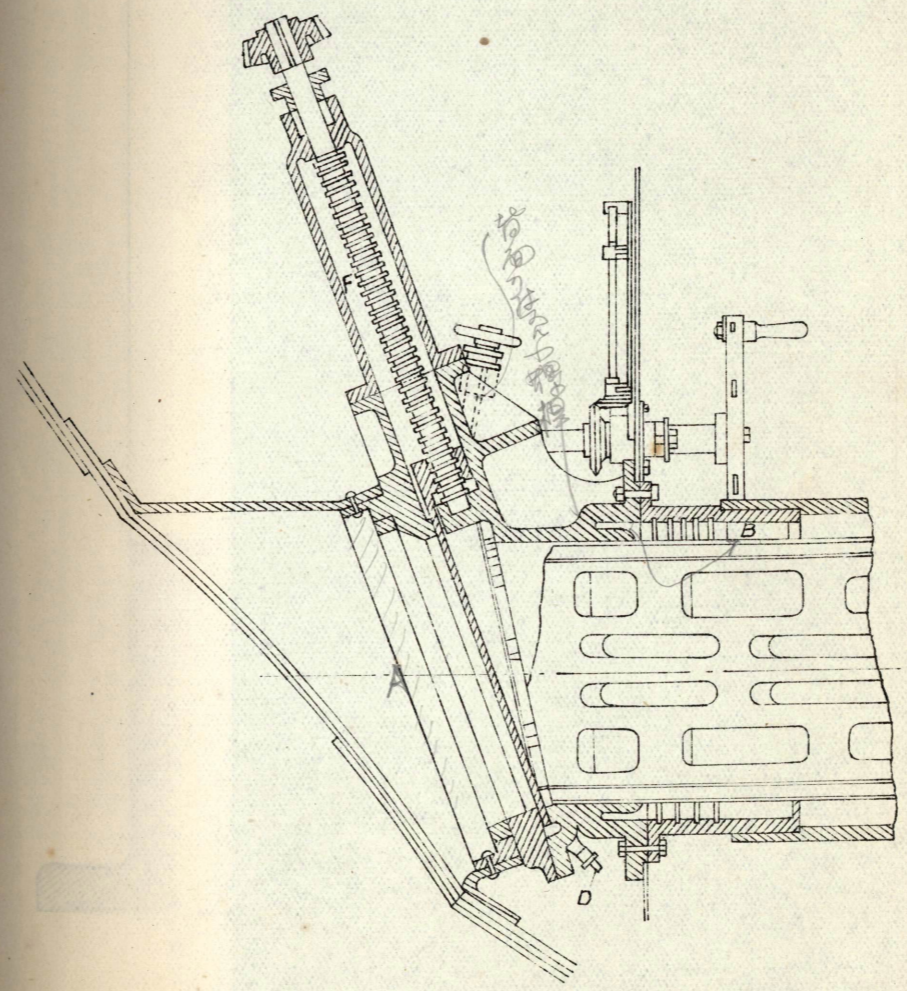


用 此 機 器 之 功 能 可 以 提 升 水 位 且 可 以 運 送 煤 炭 等 物 凡 有 此 種 機 器 之 處 均 可 以 省 費 且 可 以 提 高 工 率 凡 有 此 種 機 器 之 處 均 可 以 省 費 且 可 以 提 高 工 率

第七十五圖

前 扉 縮 尺 十 六 分 一

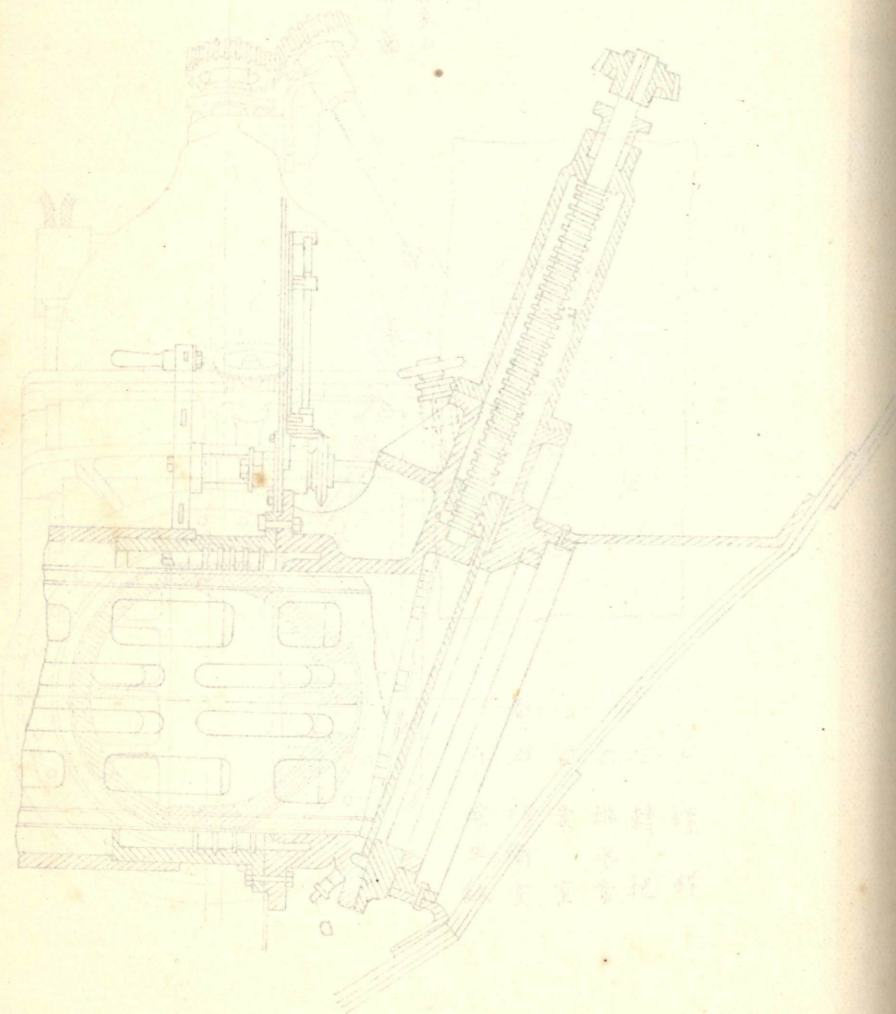
外筒ヲ離去シ  
タル前扉ノ面



- |   |   |   |   |   |   |
|---|---|---|---|---|---|
| A | B | C | D | E | F |
| 余 | 防 | 余 | 排 | 轉 | 螺 |
| 坐 | 衝 | 室 | 水 | 把 | 錐 |
| 致 | 室 |   | 余 |   |   |

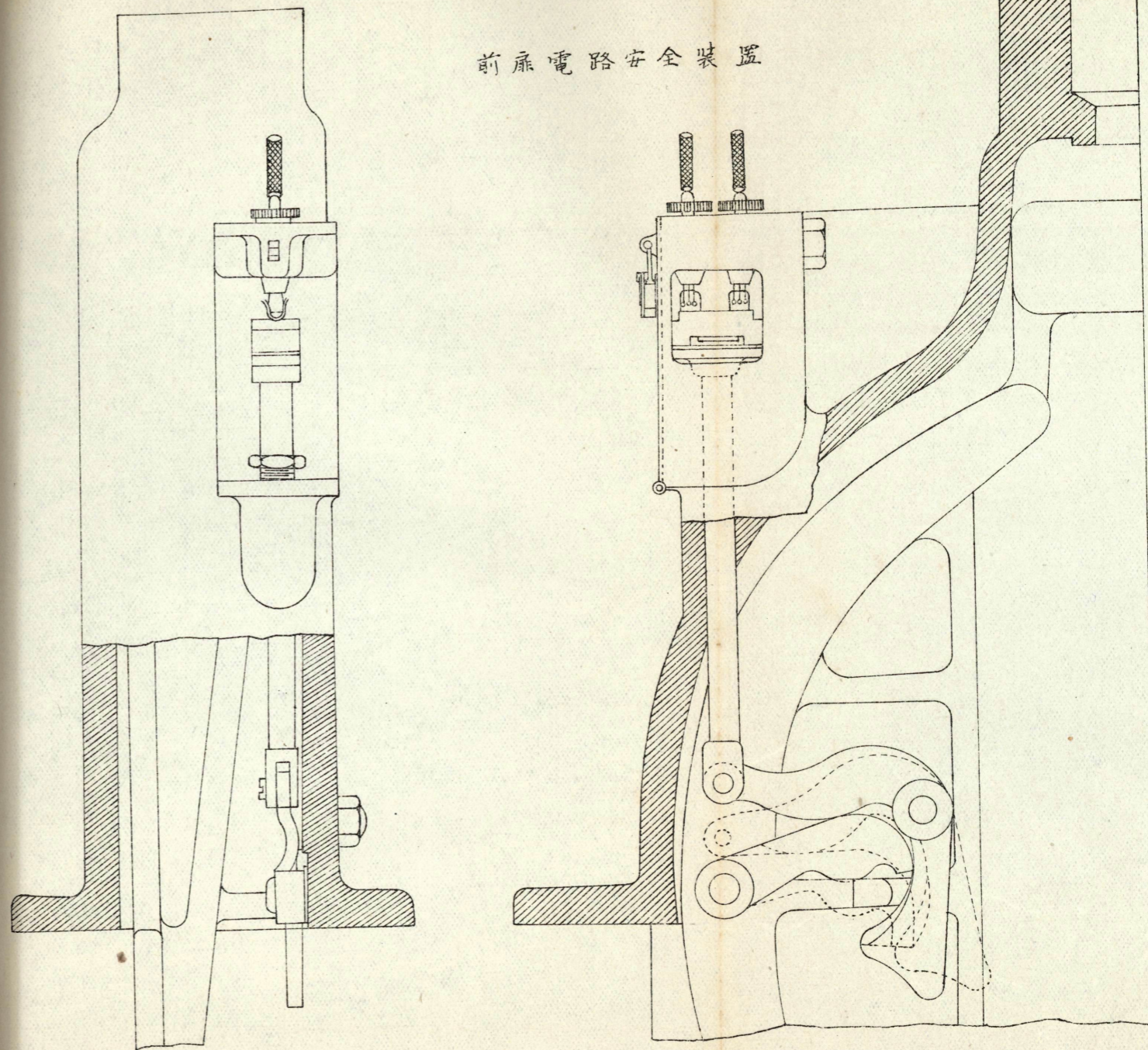
圖五十五

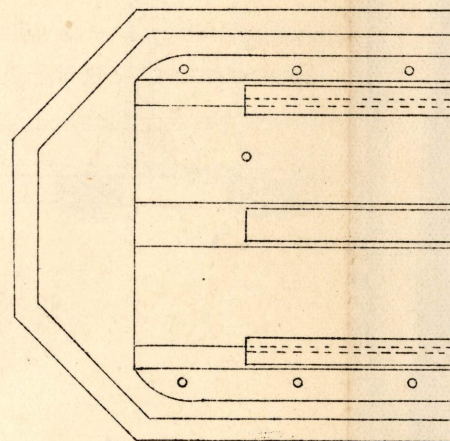
前扉電路安全裝置



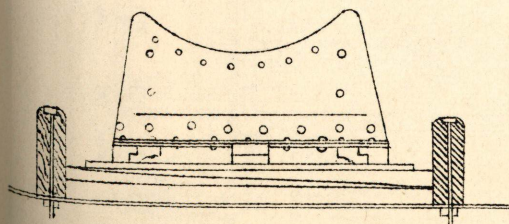
第七十六圖

前扉電路安全裝置

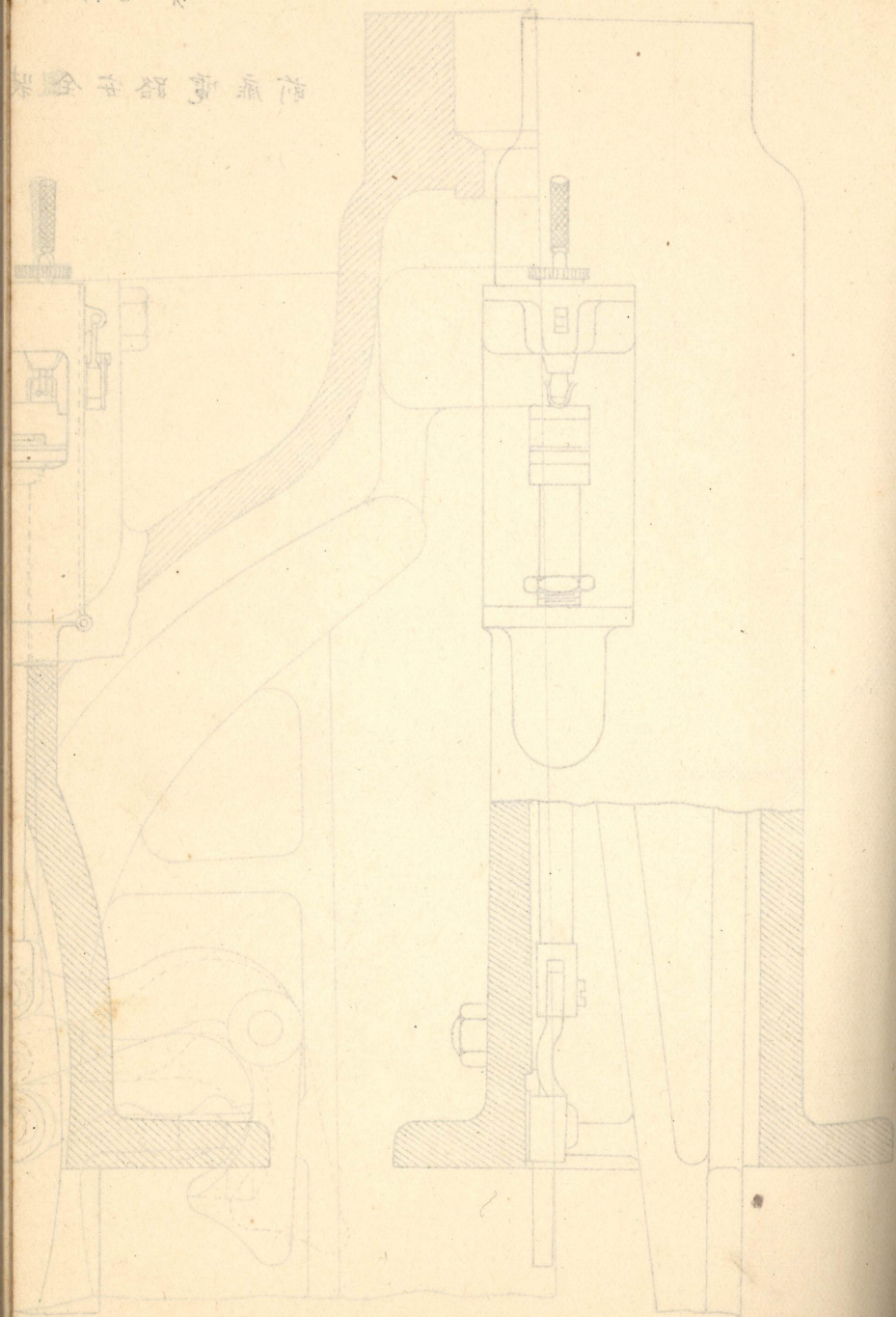
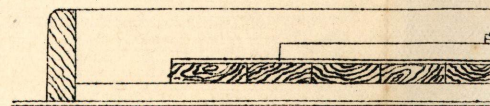




端面

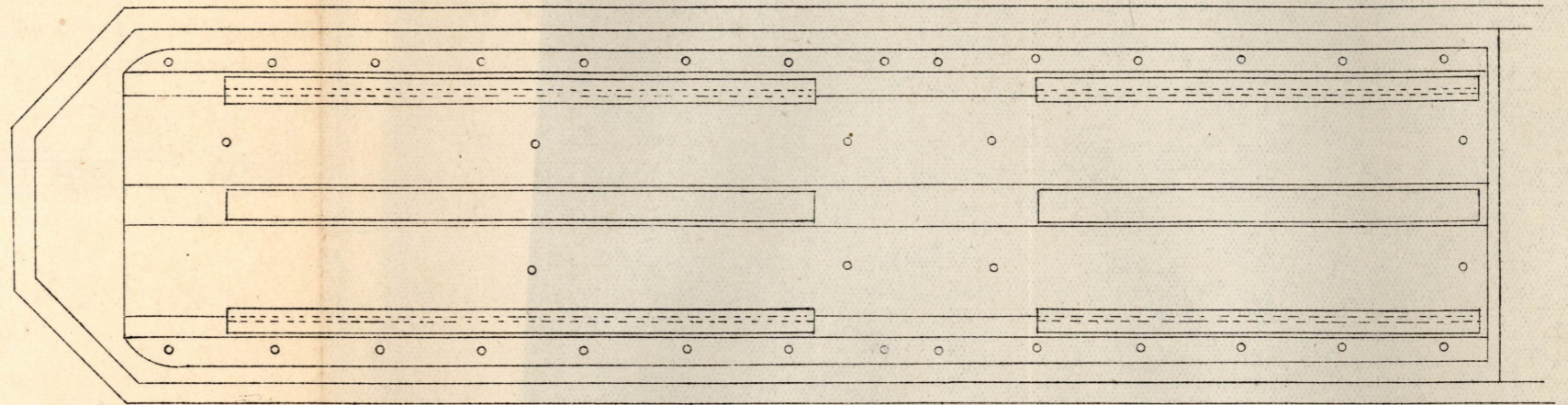


後

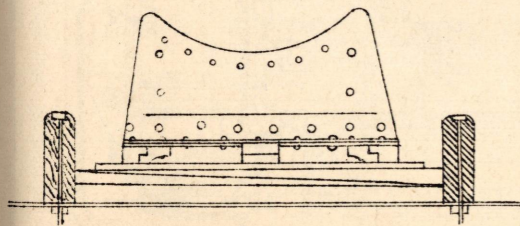


第七十七圖  
架 臺

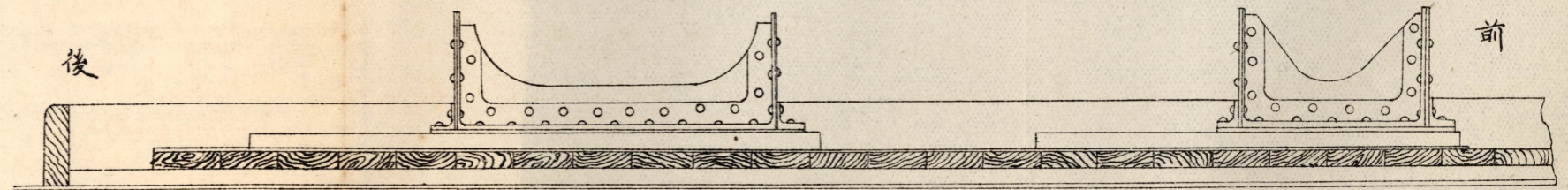
平 面



端 面

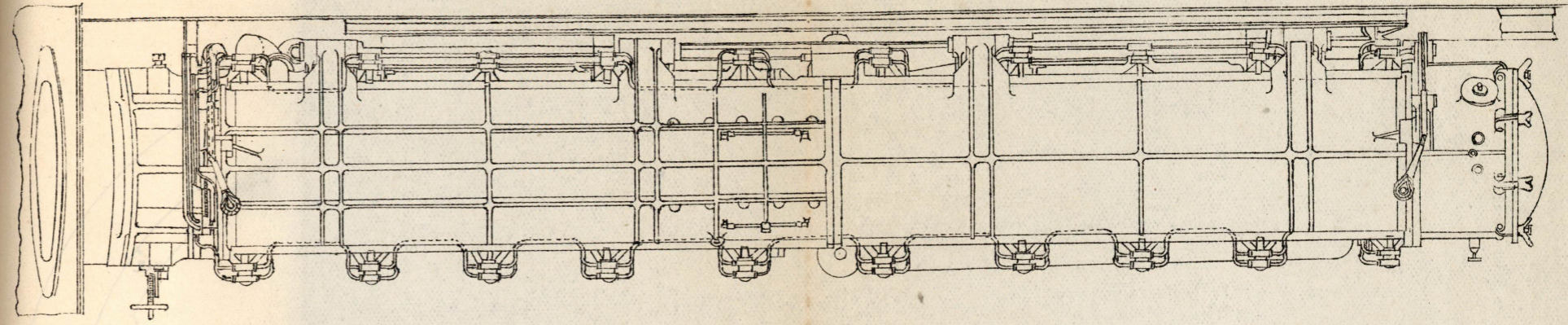


側 面

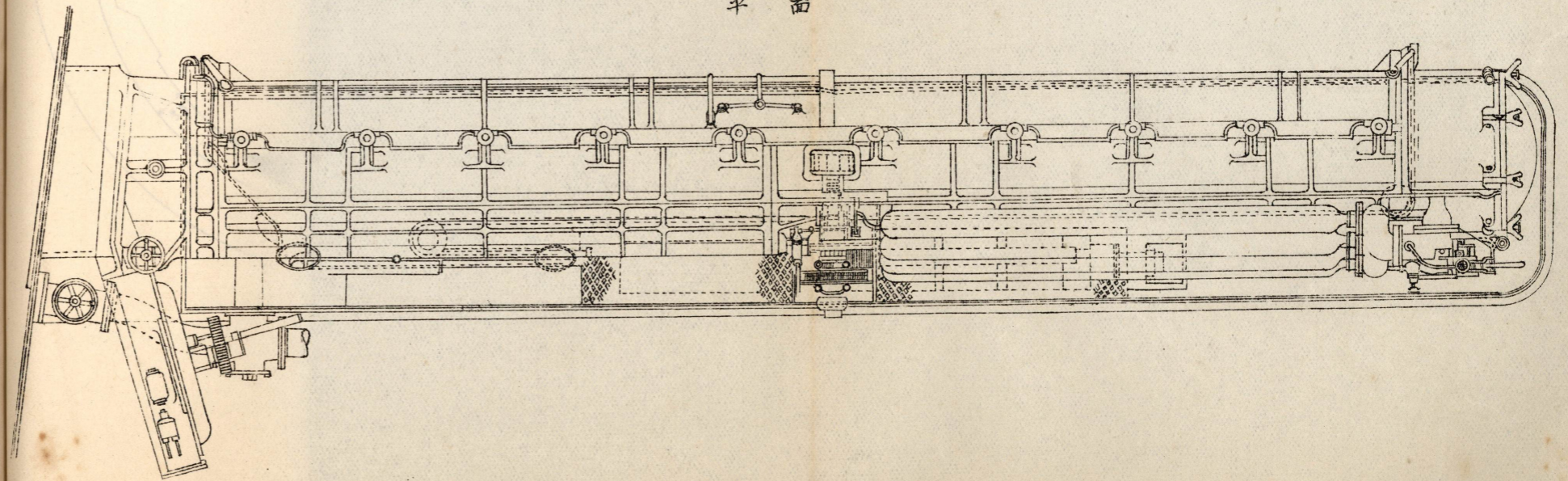


第七十八圖

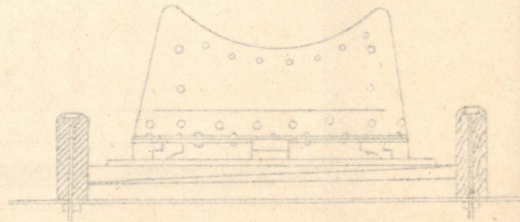
側面



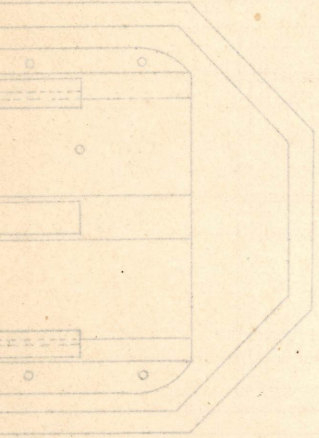
平面



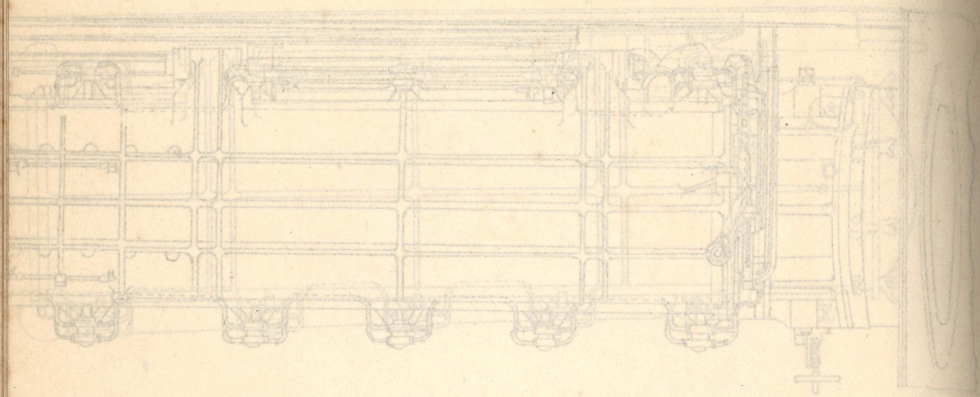
拖石



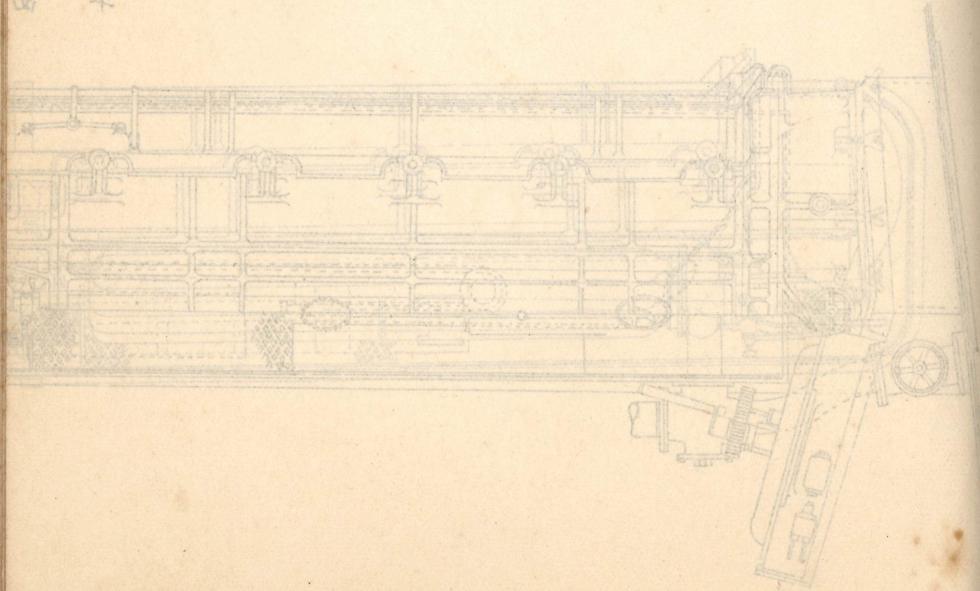
鐵



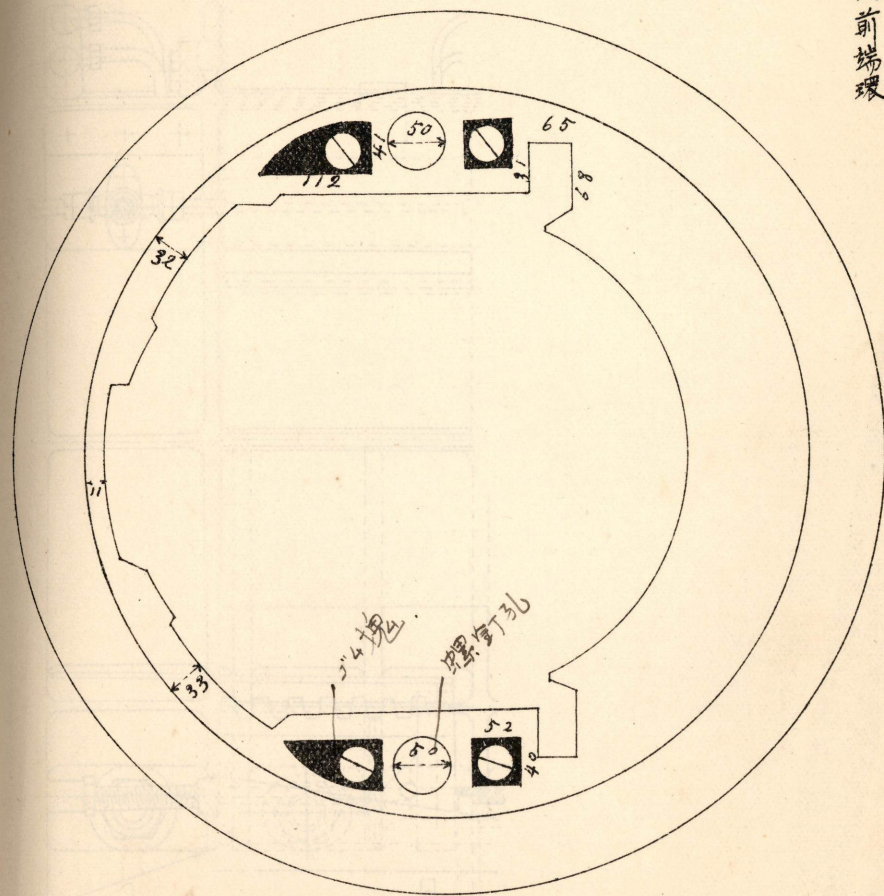
十國表  
面圖



面圖



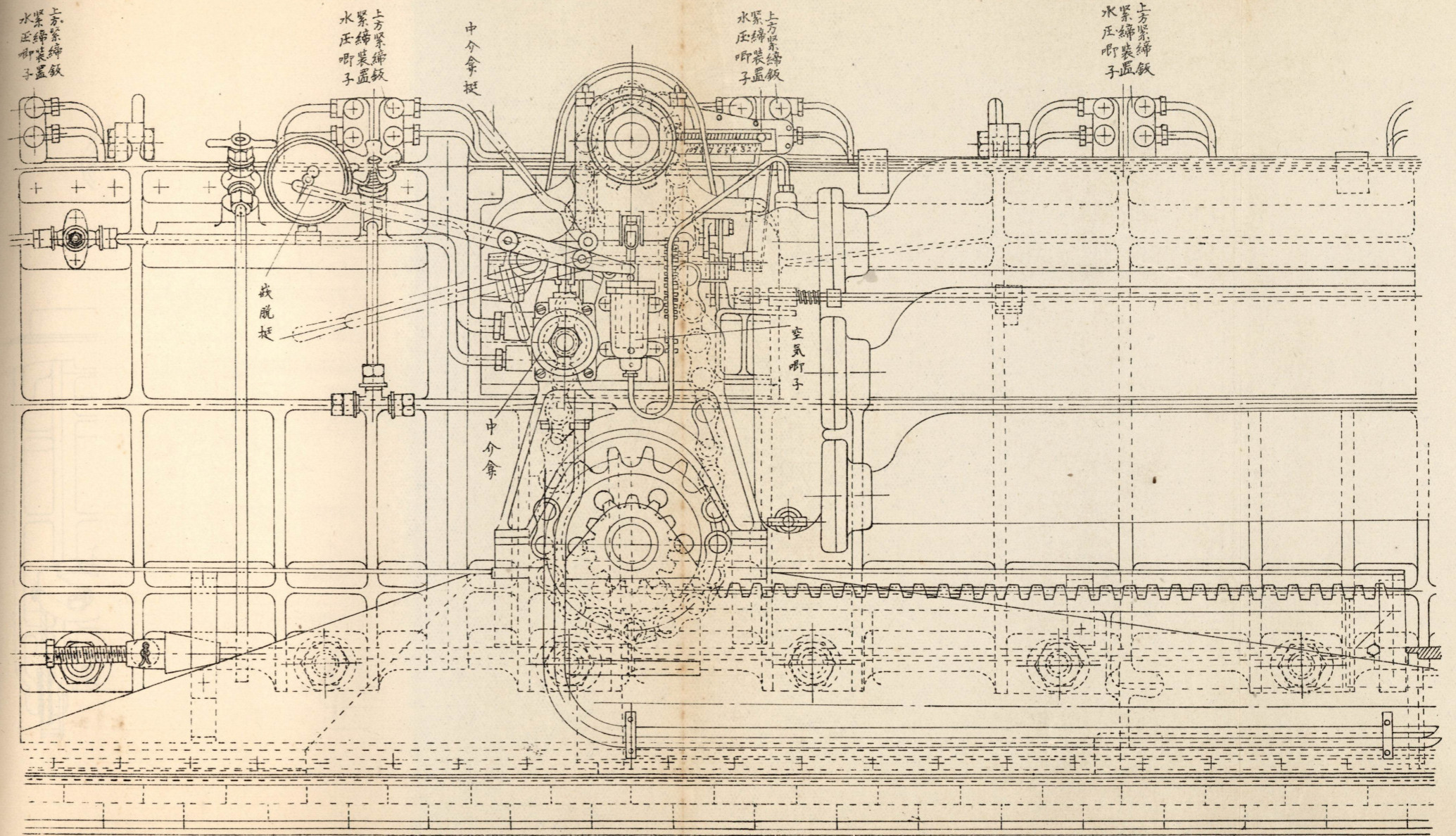
第七十九圖



外筒前端環

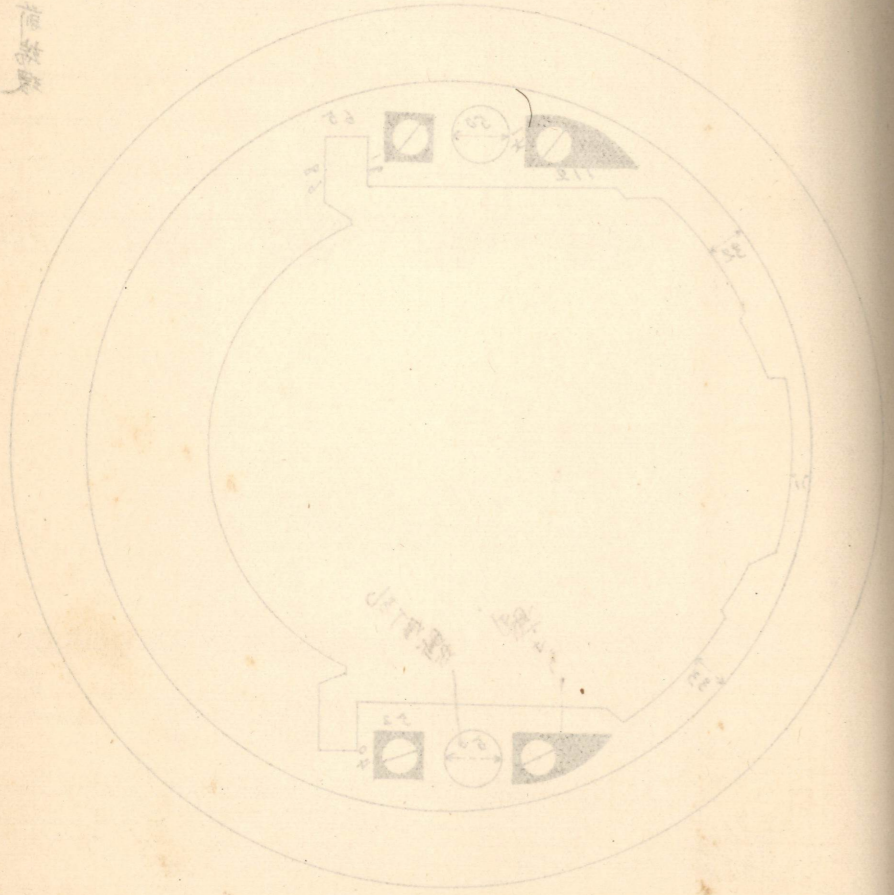


第八十图



图五十一

长筒筒轴



第八十一圖

