

機教秘第壹八號 116

大正六年九月

兵器學教科書  
魚形水雷  
敷設水雷  
發射機

附圖

生徒第三學年

海軍機關學校

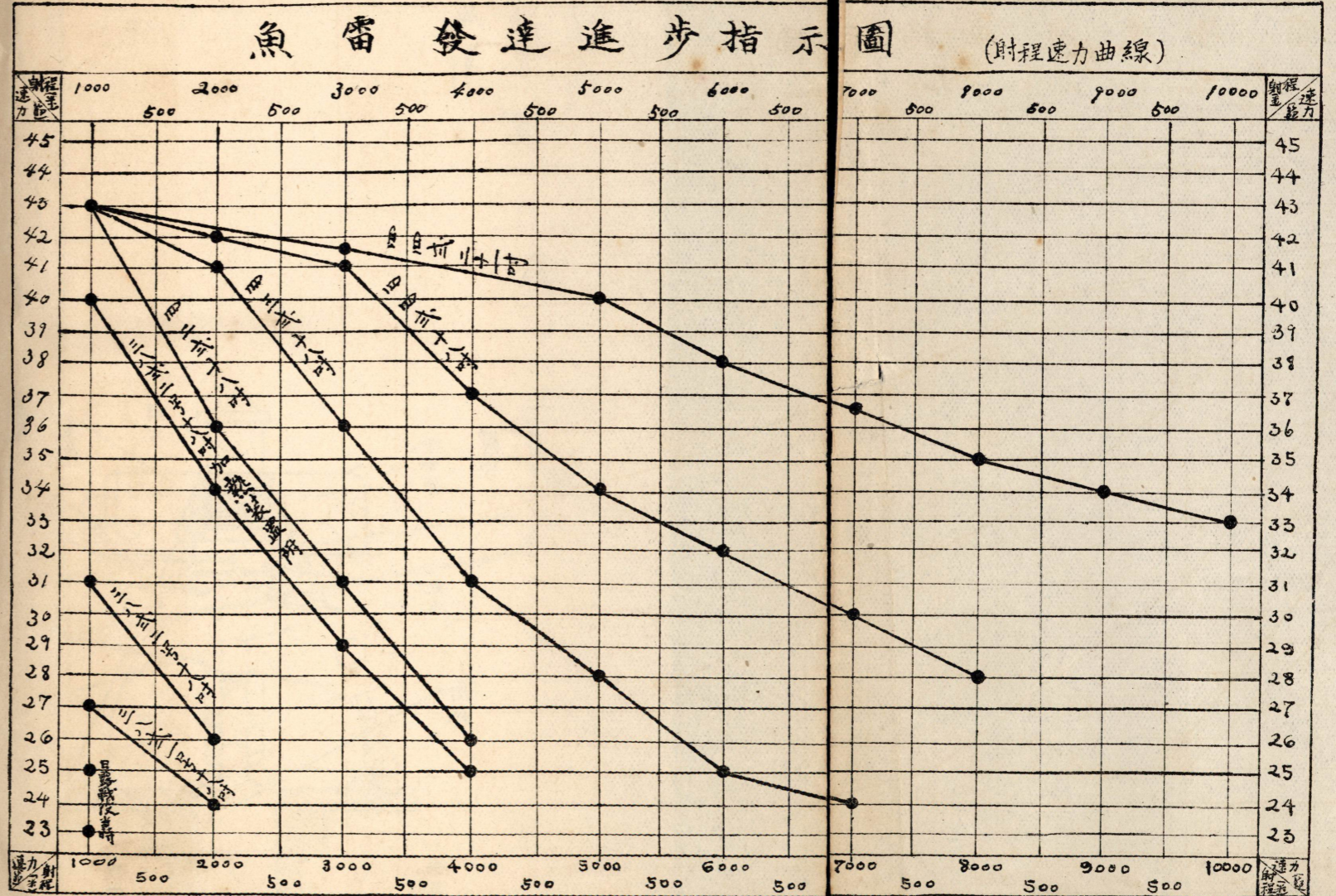




第一圖

魚雷發達進步指示圖

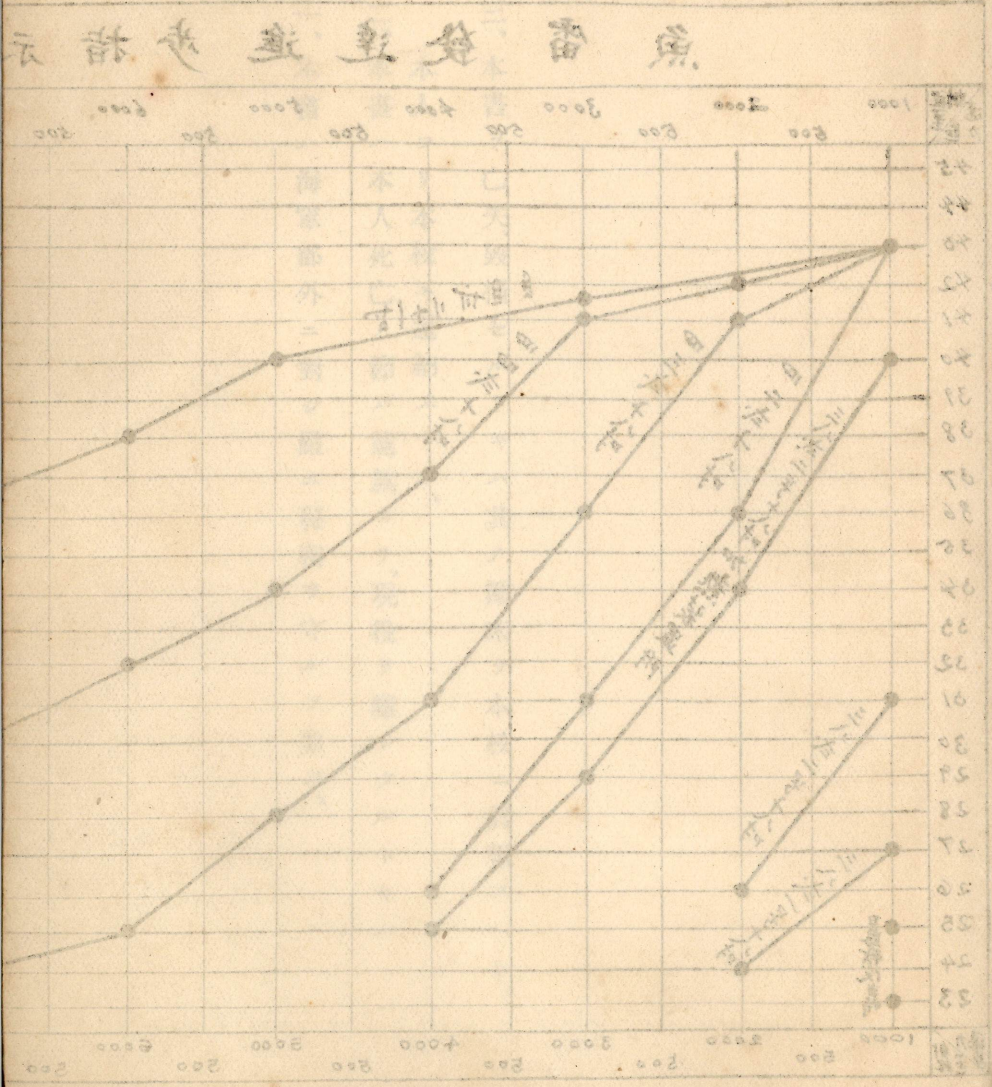
(射程速力曲線)



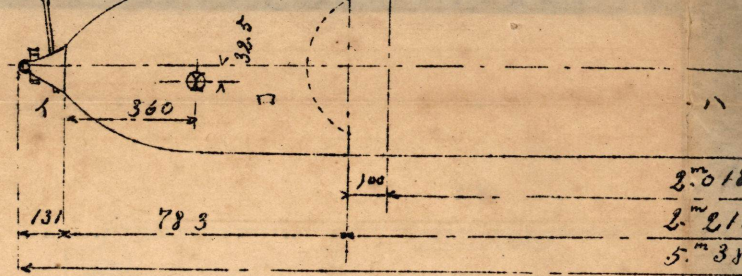
- 一、本書ハ海軍部外ニ對シ嚴ニ秘密ヲ守ルヲ要ス、
- 二、本書ハ本人死亡ノ節ハ遺族ヨリ、現役ヲ離レタルトキハ本人ヨリ本校ニ還納スヘシ、
- 三、本書ヲ亡失、毀損セルトキハ其ノ顛末ヲ本校ニ詳報スヘシ、



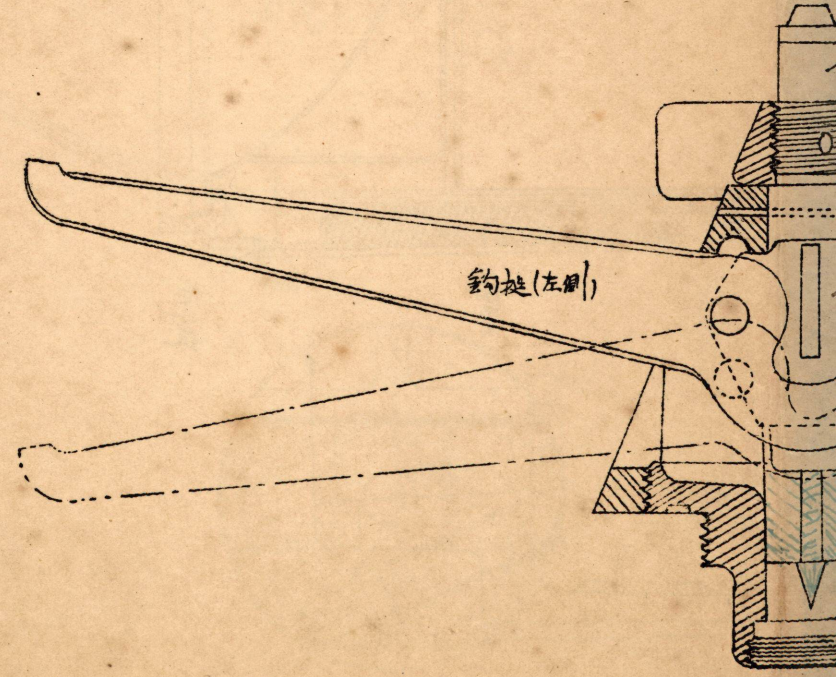
圖一第



八吋魚雷



四四式十八吋魚雷發射尖

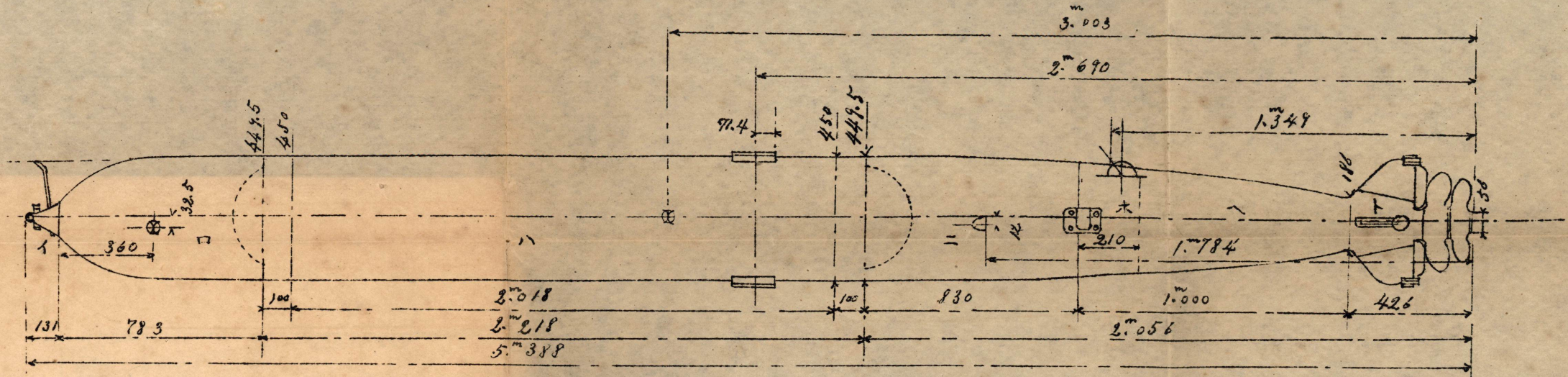


實測爆發尖



第二圖

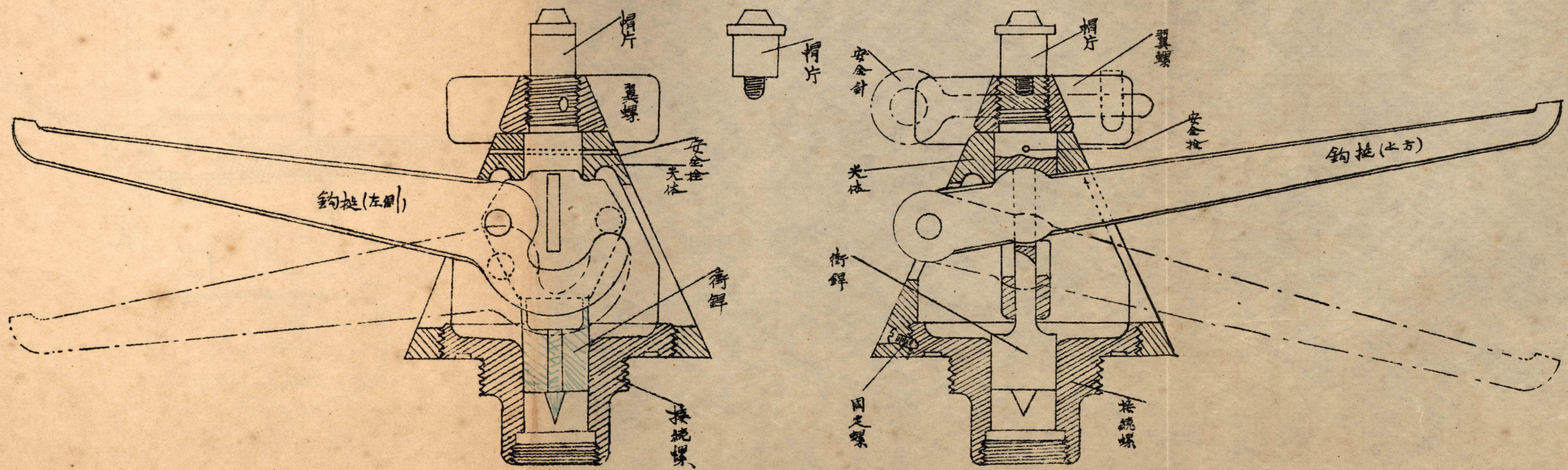
四四式十八吋魚雷



卜 尾部  
 一 浮室  
 木 機密室  
 二 秘密室  
 八 氣室  
 口 實用頭部  
 卜 實用頭部

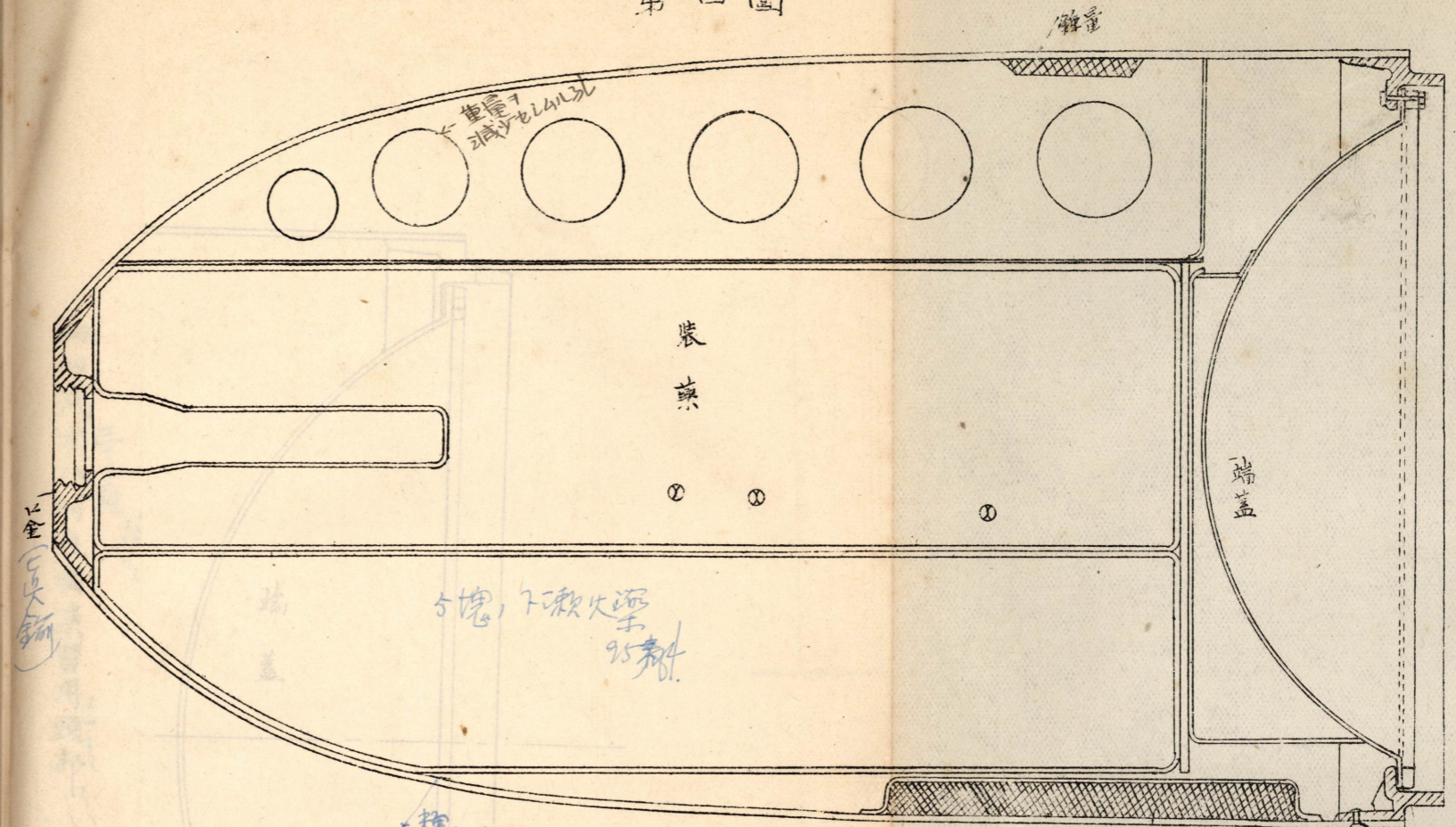
第三圖

四四式十八吋魚雷發尖



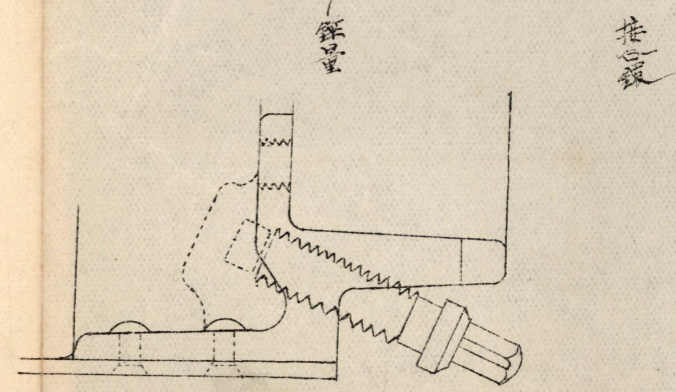
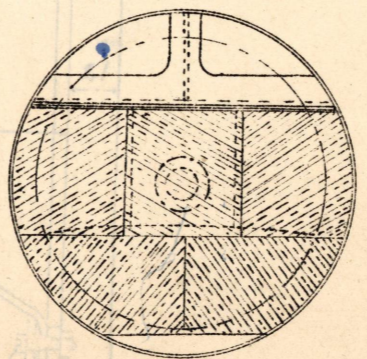


第四圖

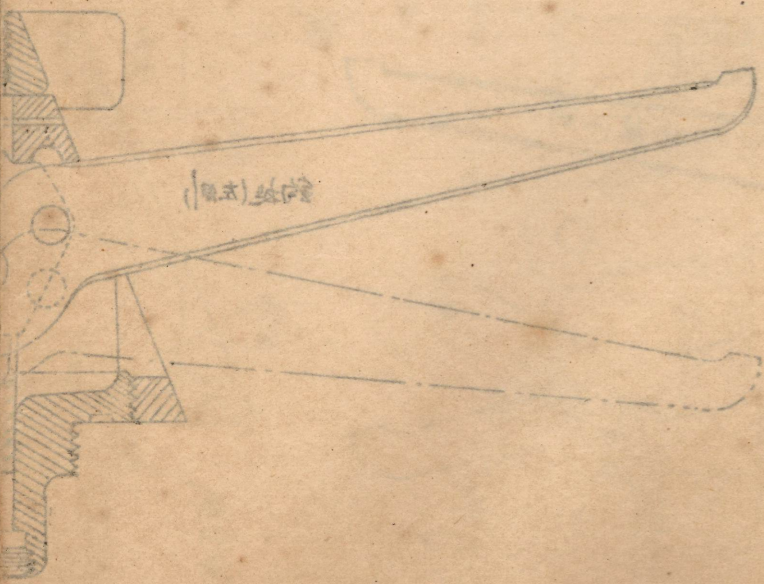


四二六一号, 二号, 五号  
四式十八吋魚雷定用頭部

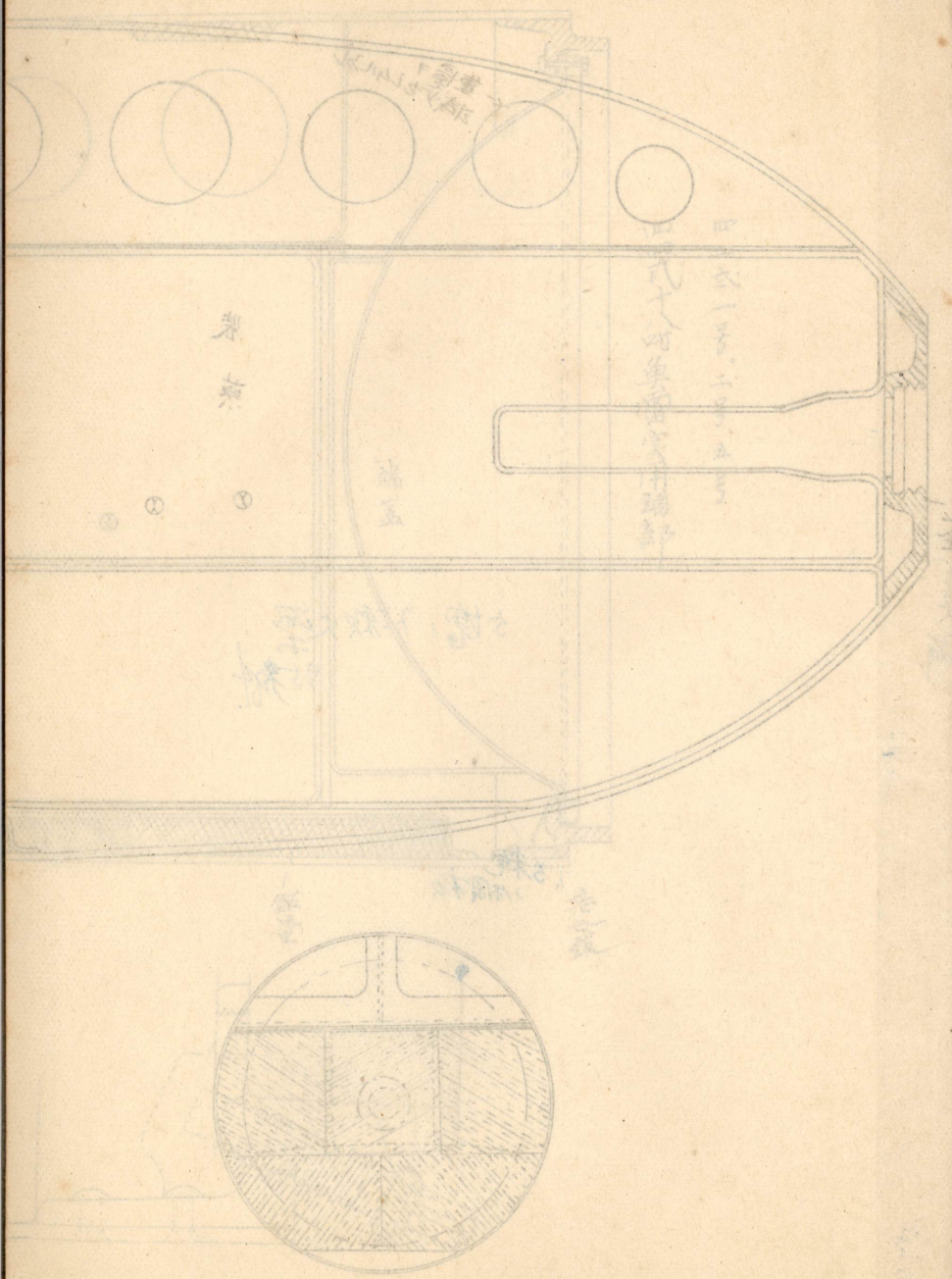
7.5 磅  
鋼板



四四左十八吋魚雷裝藥尖

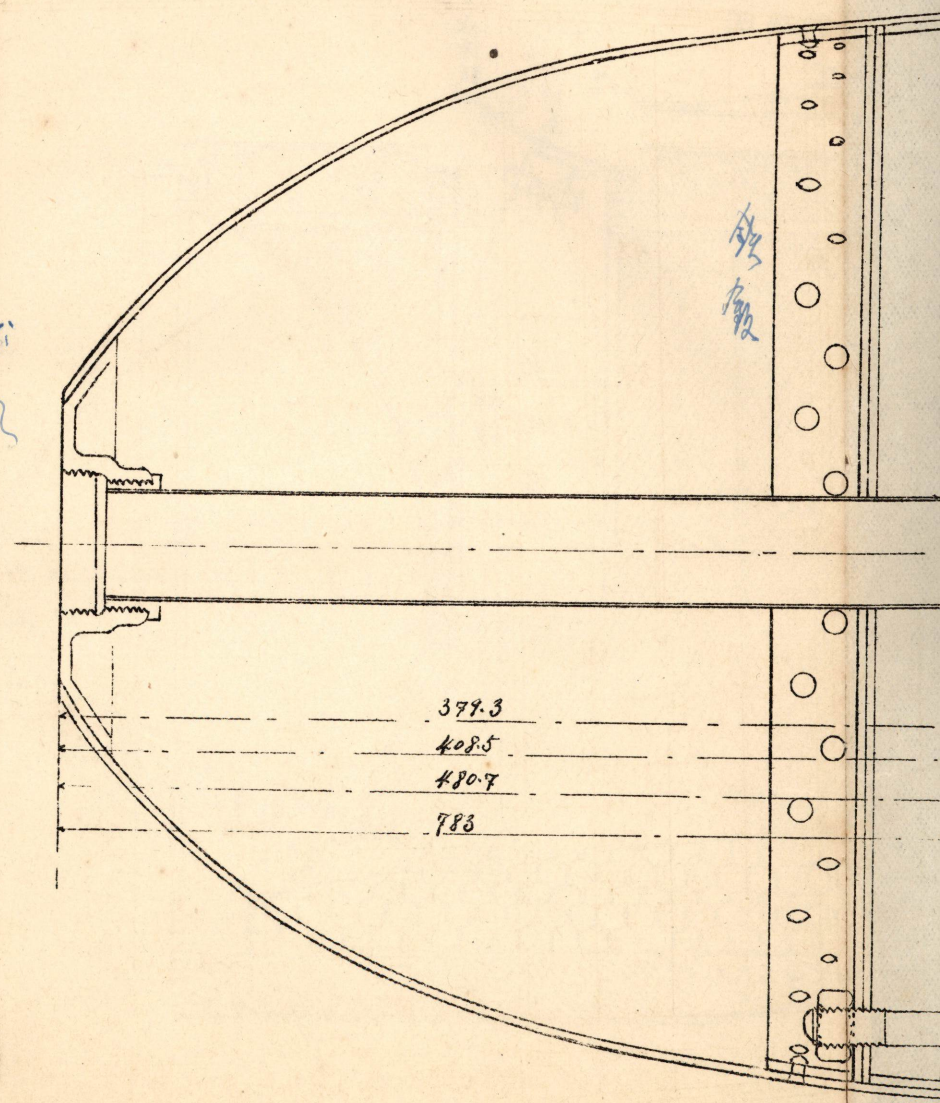
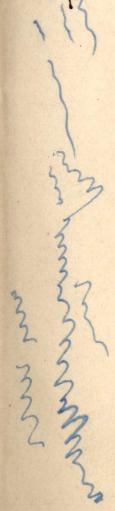






四四式十八吋魚雷演習用頭部

三寸



鉛板

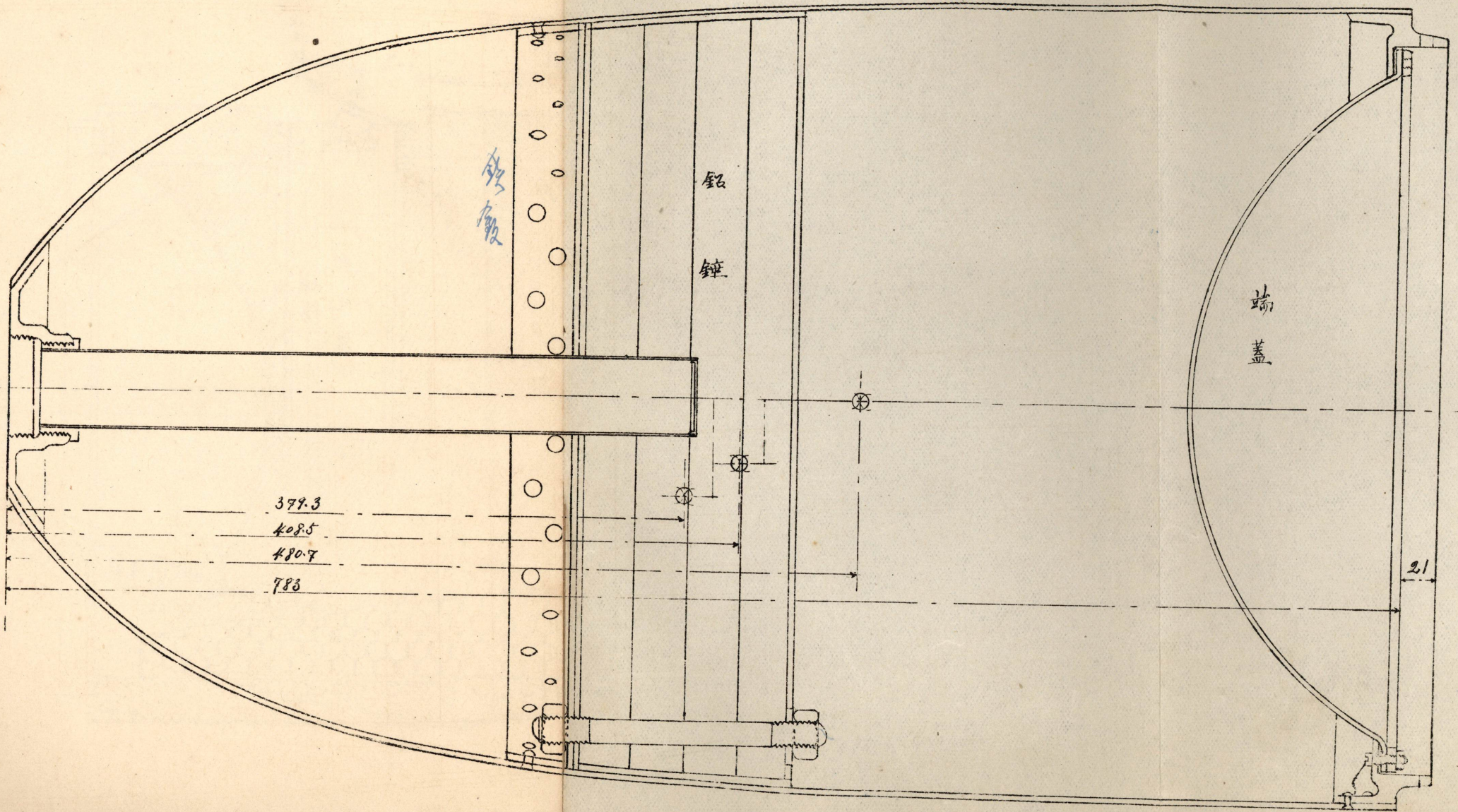
- 379.3
- 408.5
- 480.7
- 783



第五回

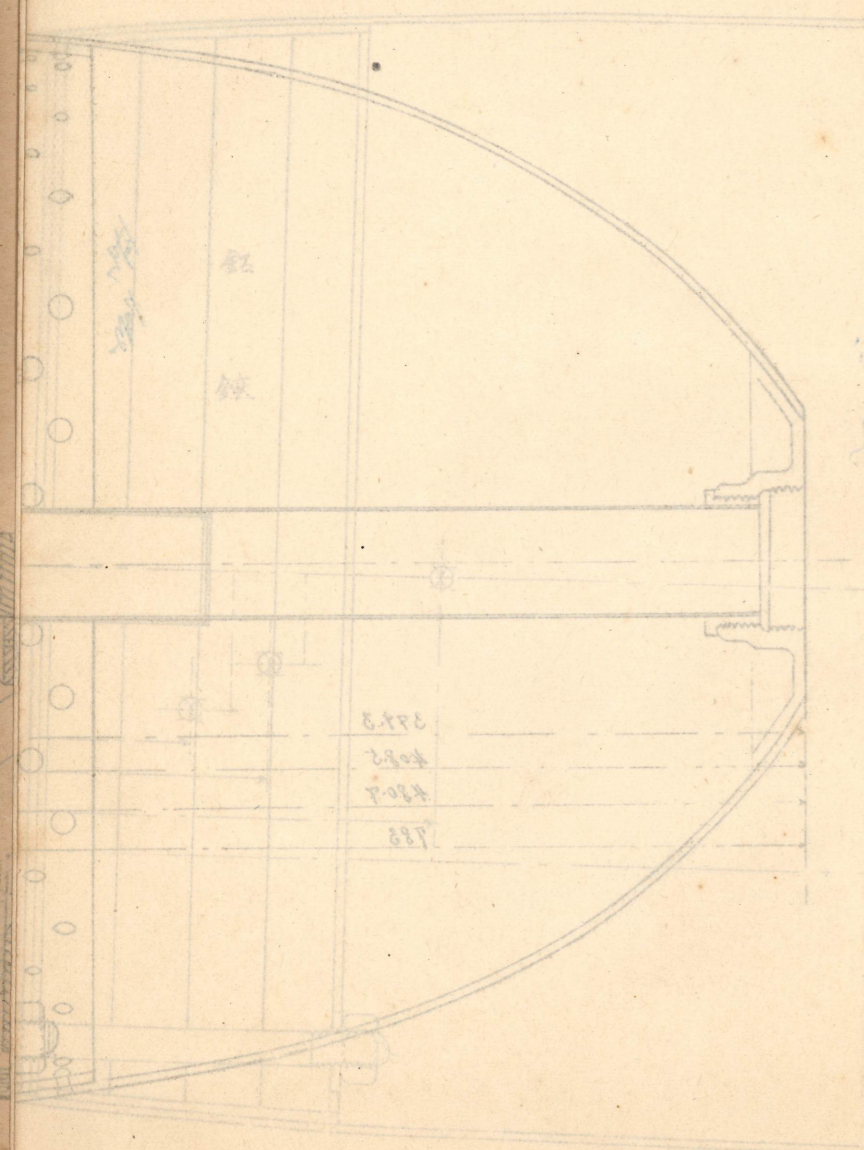
四四式十八吋魚雷演習用頭部

三寸



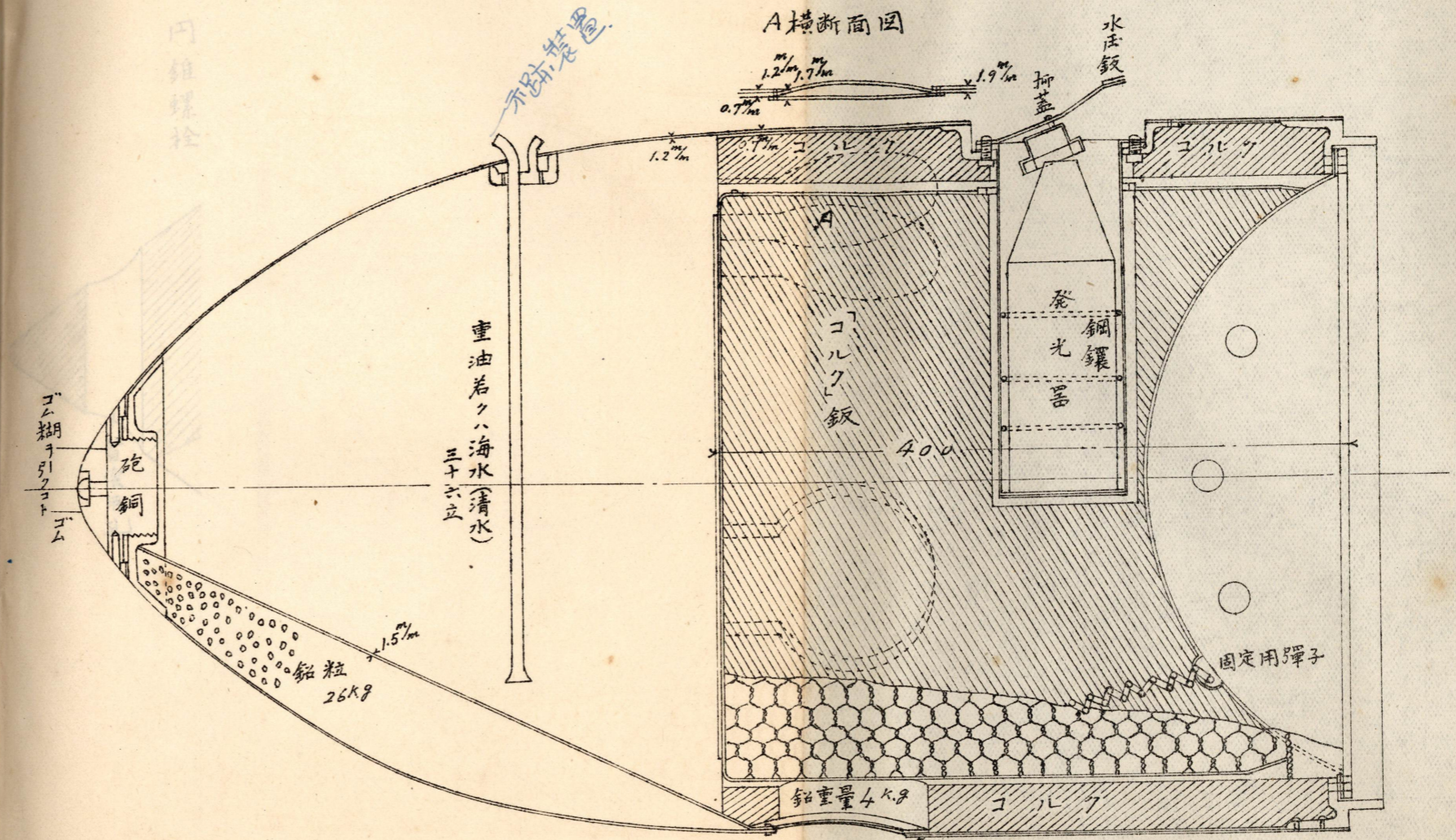


五回



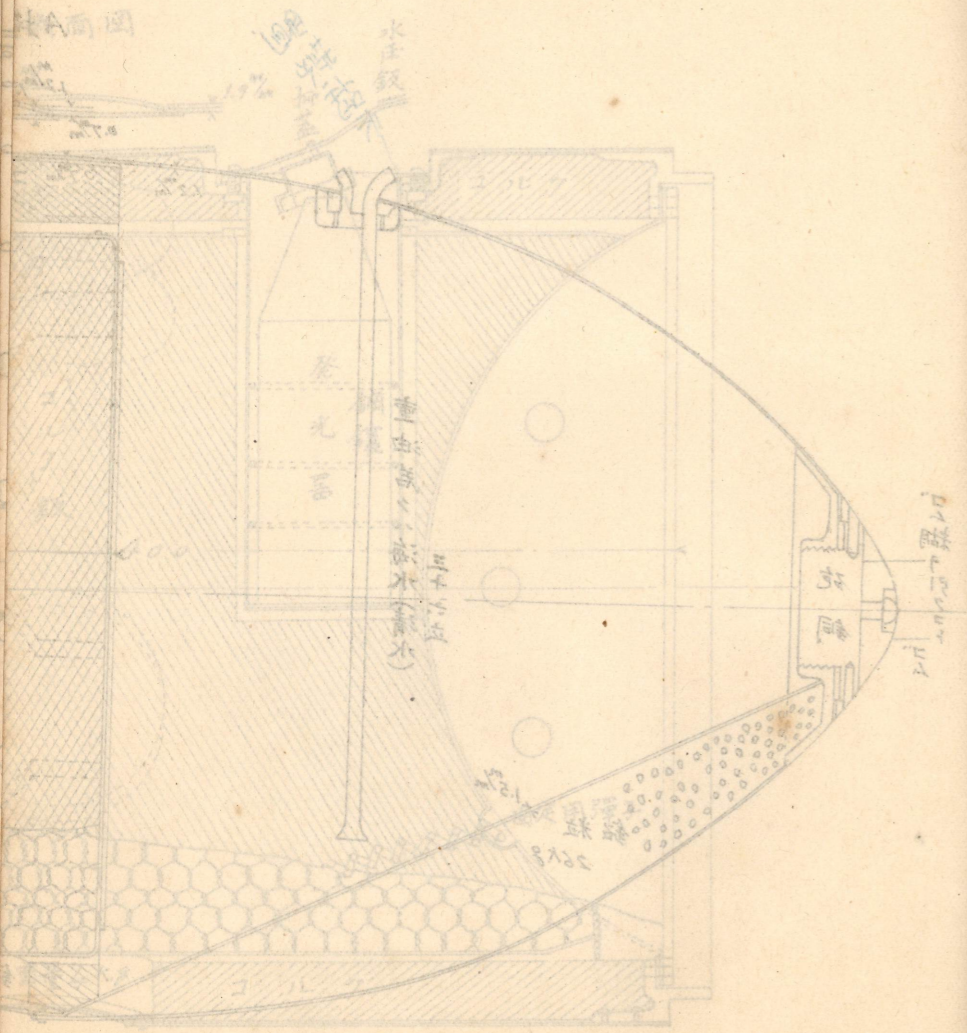
四四六十八加威爾斯軍用艇

### 第六回 衛突頭部

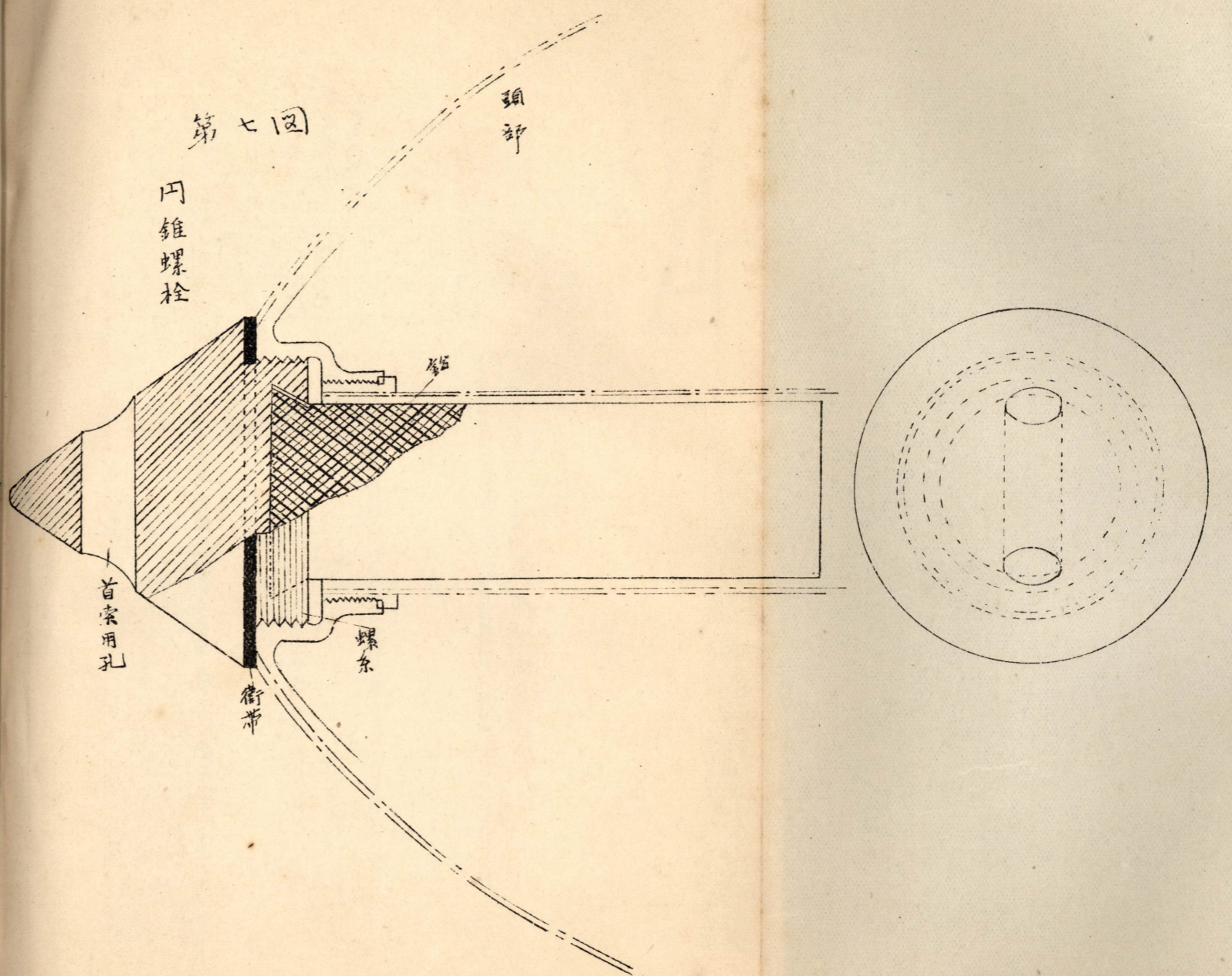




第一圖  
第二圖

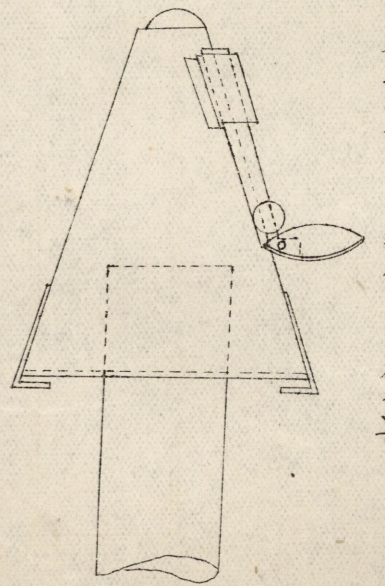
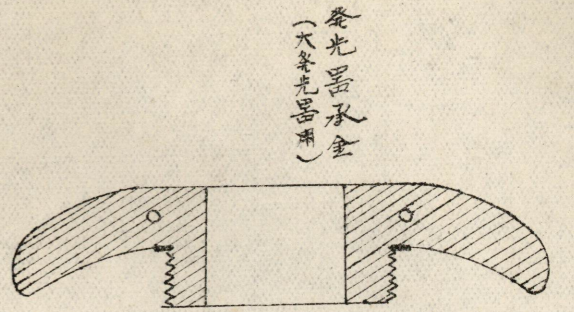
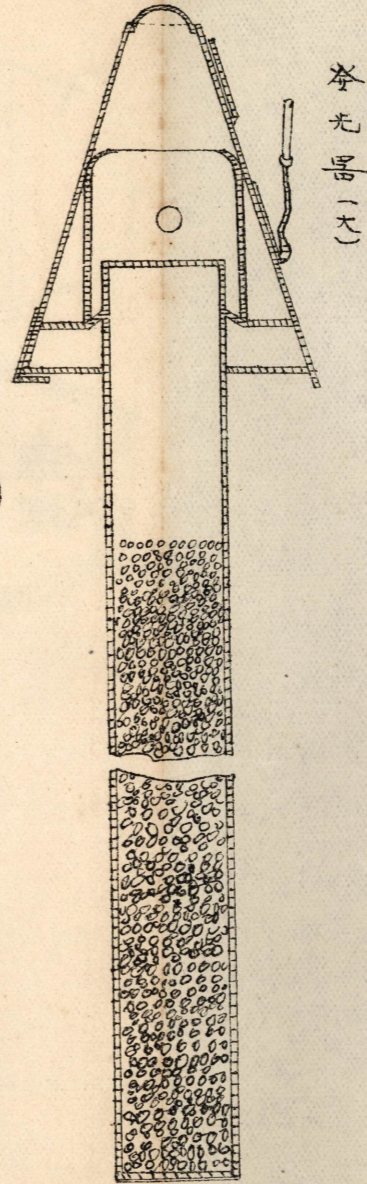
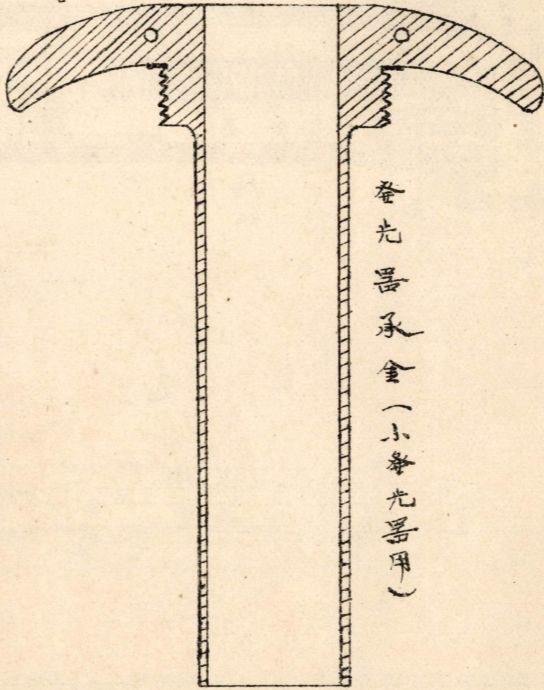
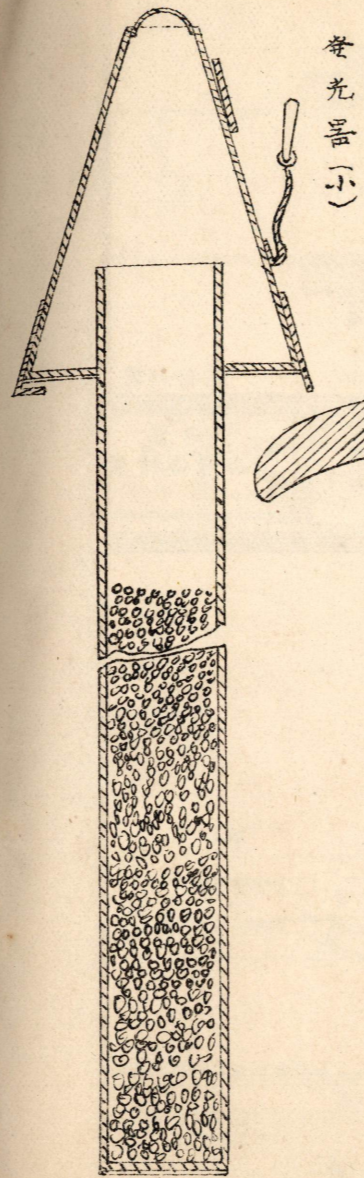


第七圖





第八回



水中各射管用トシテ準備レタル小光器

図ノ次

凹形鉄鉢

首末用

取付

取付

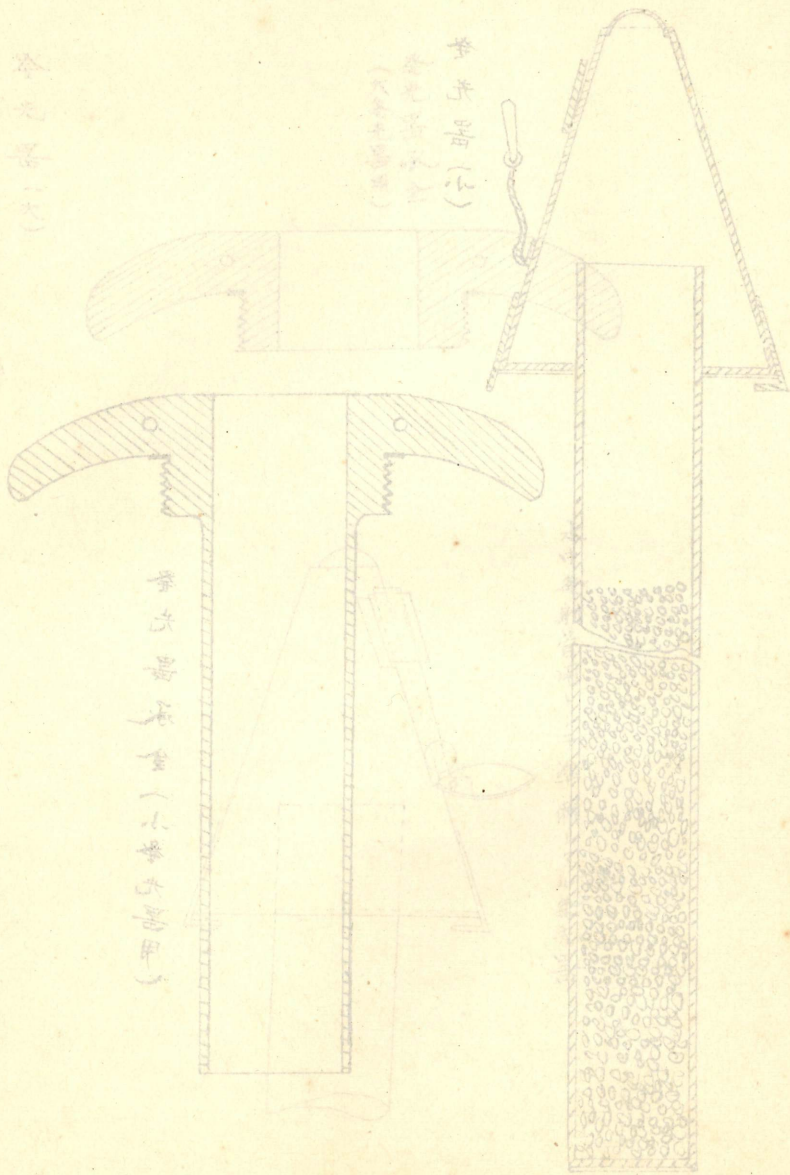
取付



圖八 卷

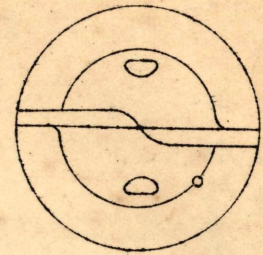
本卷之構造

卷光部 (子)  
卷光部 (父)  
卷光部 (孫)



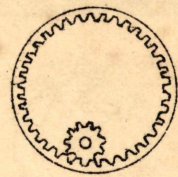
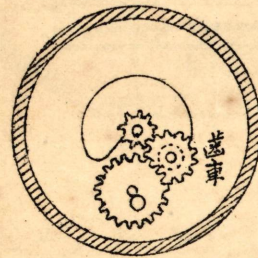
卷光部 (子) (六等分部)

深  
度  
針



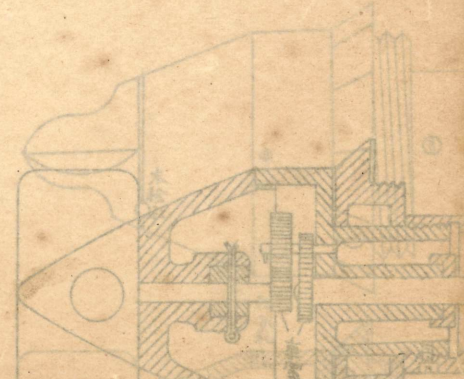
(子) 断面

(父) 断面



羽翼螺  
翼  
螺

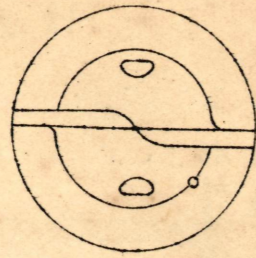
傾  
度  
計



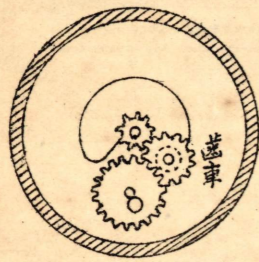


第九圖

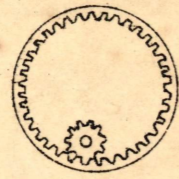
深度計



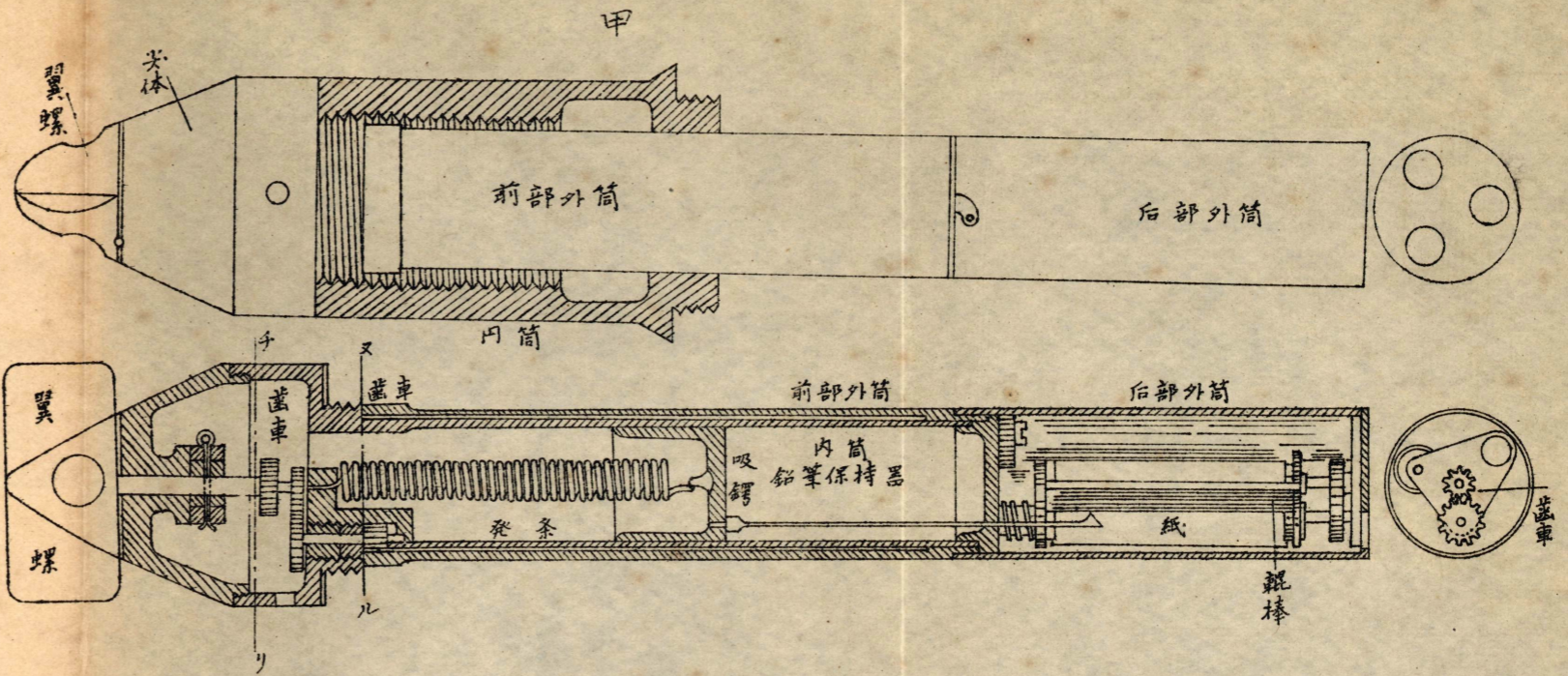
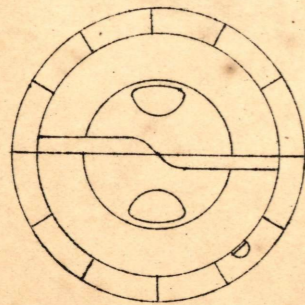
(4) 断面



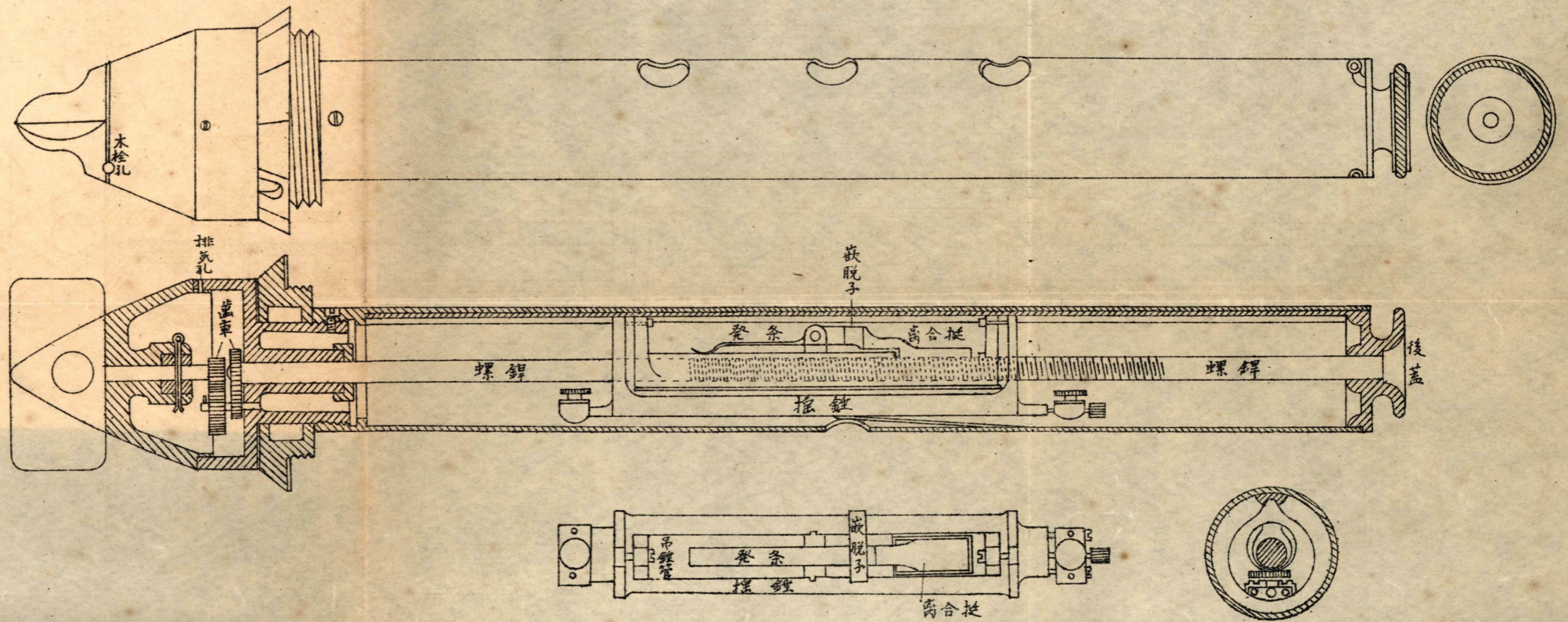
(5) 断面



傾度計



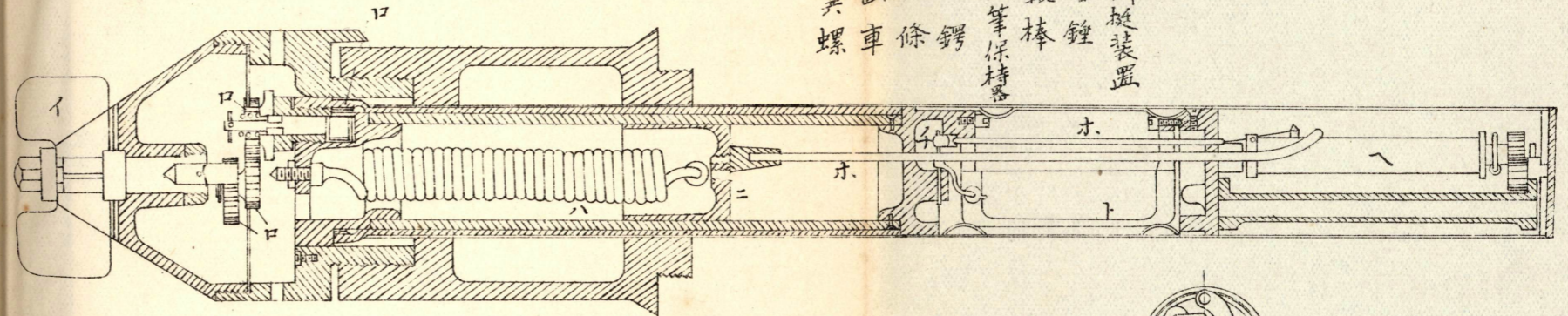
乙



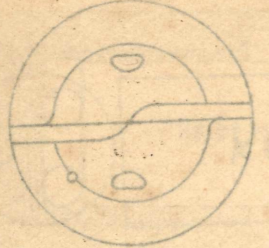
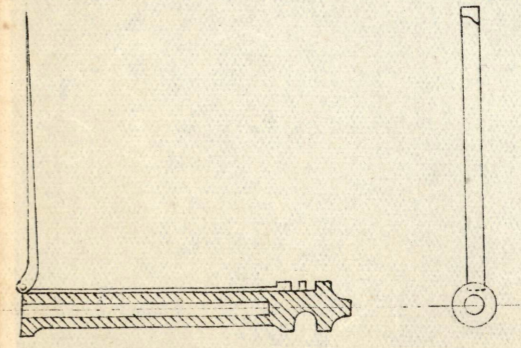
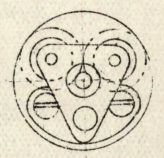
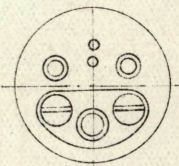
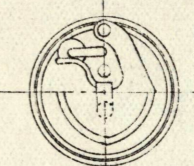
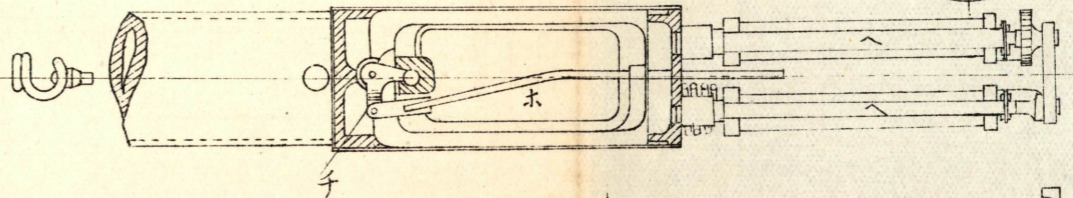


第十圖  
傾深度計

子 錐挺裝置  
ト 錘  
ハ 錘棒  
二 鉛筆保持器  
ホ 吸錐  
ハ 發條  
口 齒車  
イ 翼螺



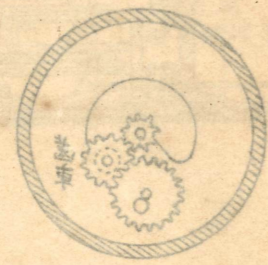
ヒツ子	2.5M	FET	5000M
"	2.0M	"	6000M
"	1.5M	"	3000M
"	1.0M	"	2000M
"	0.5M	"	1000M



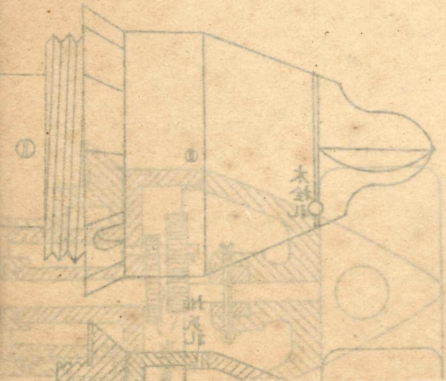
面施 (五)

面施 (六)

面施 (七)

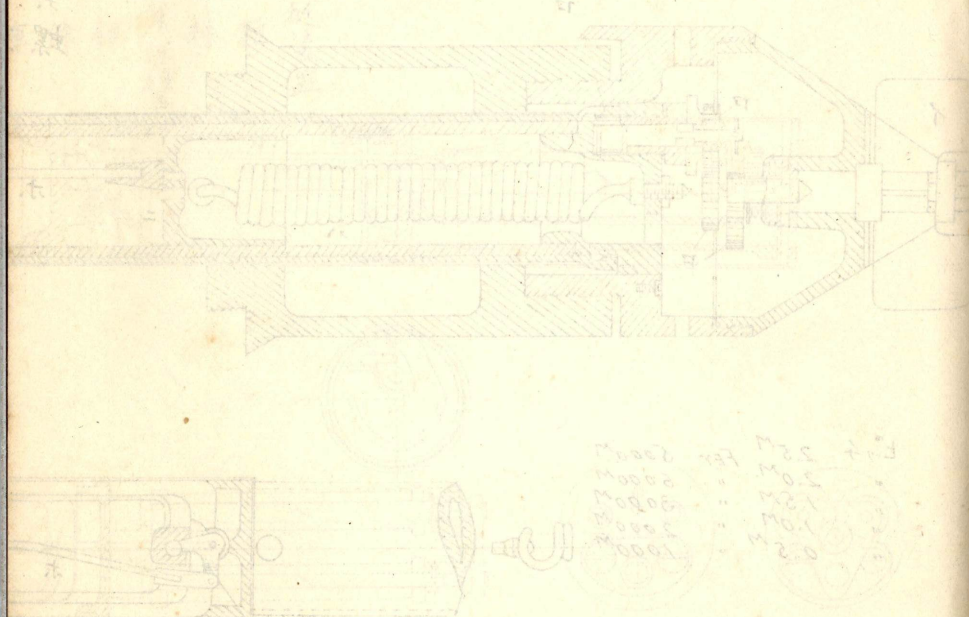


面施 (八)

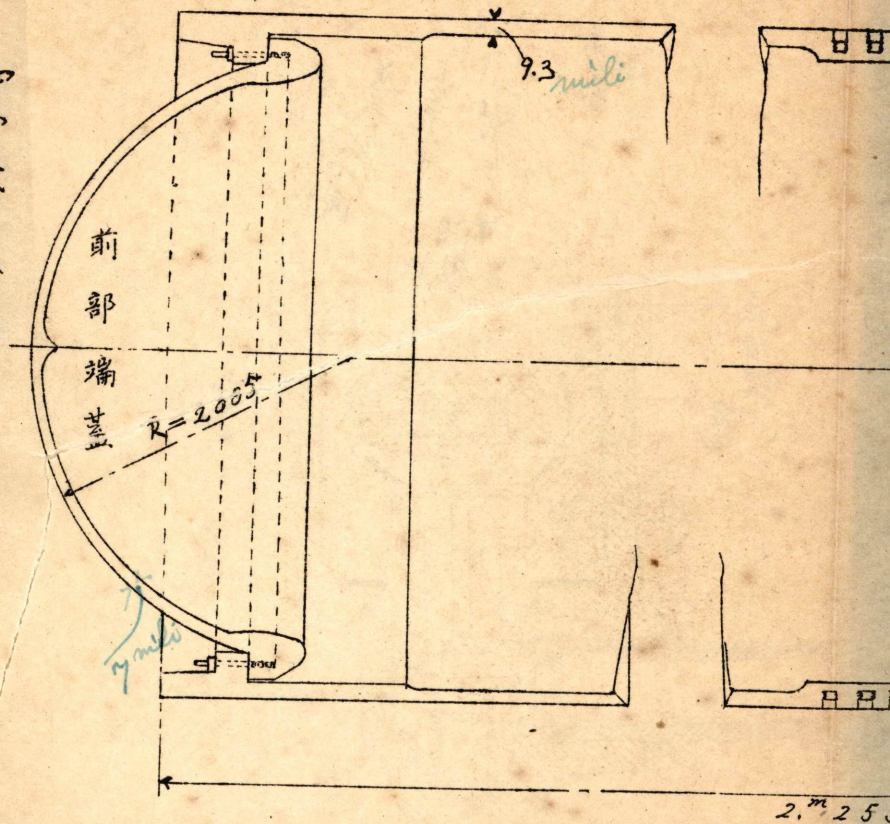




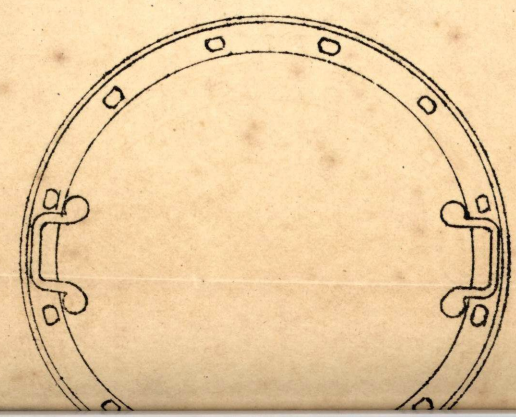
第十四号  
雷氣室



四四式十八吋魚雷氣室



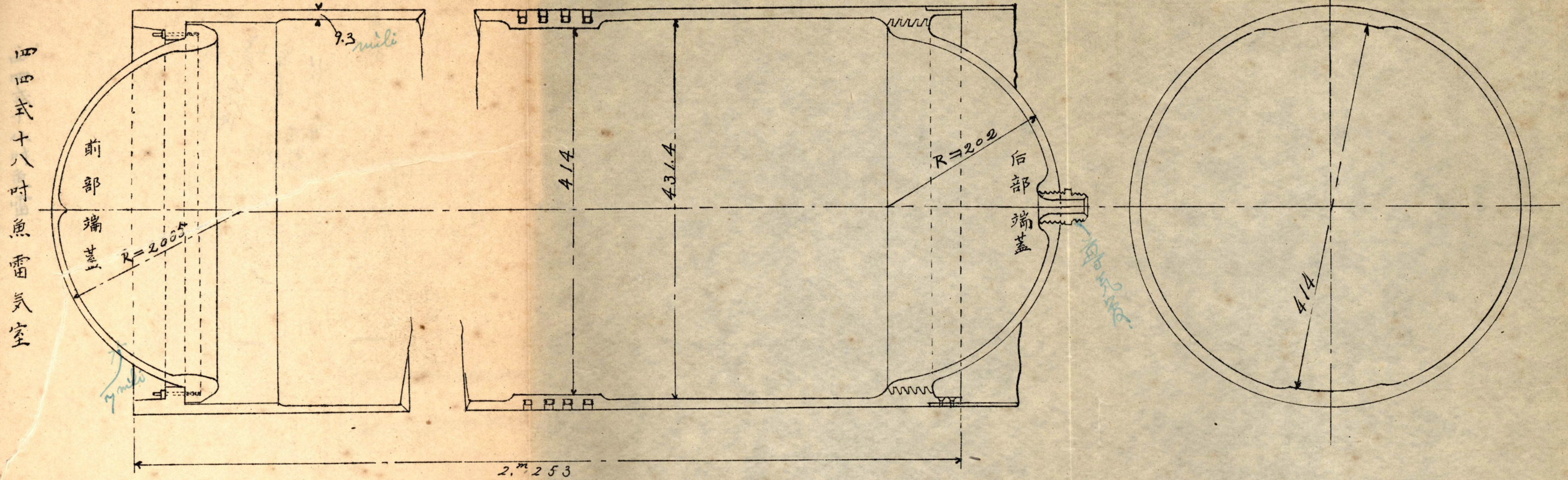
保護蓋



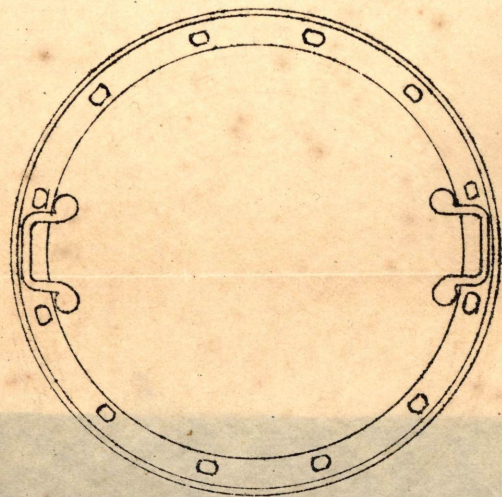


第十一圖

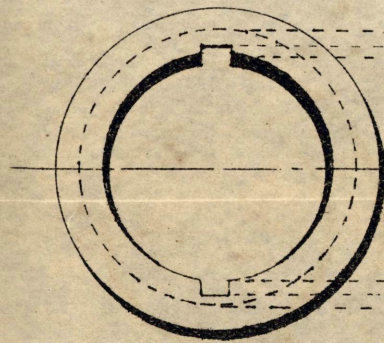
縮尺五分一



保護蓋



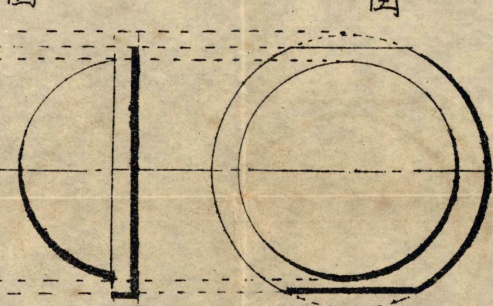
氣室前端



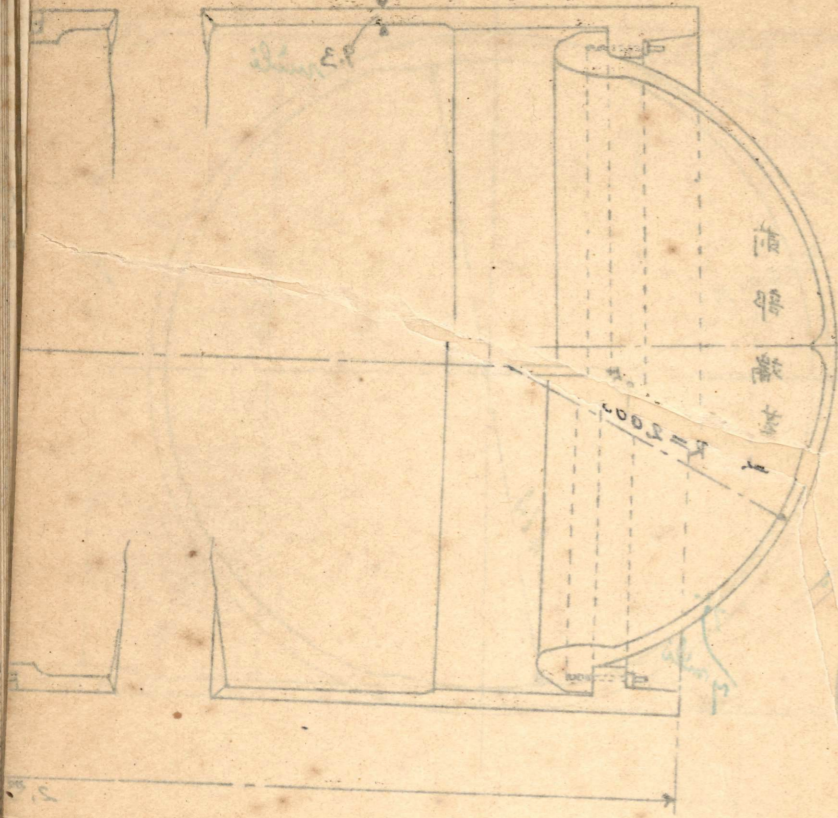
前部端蓋

側面圖

平面圖







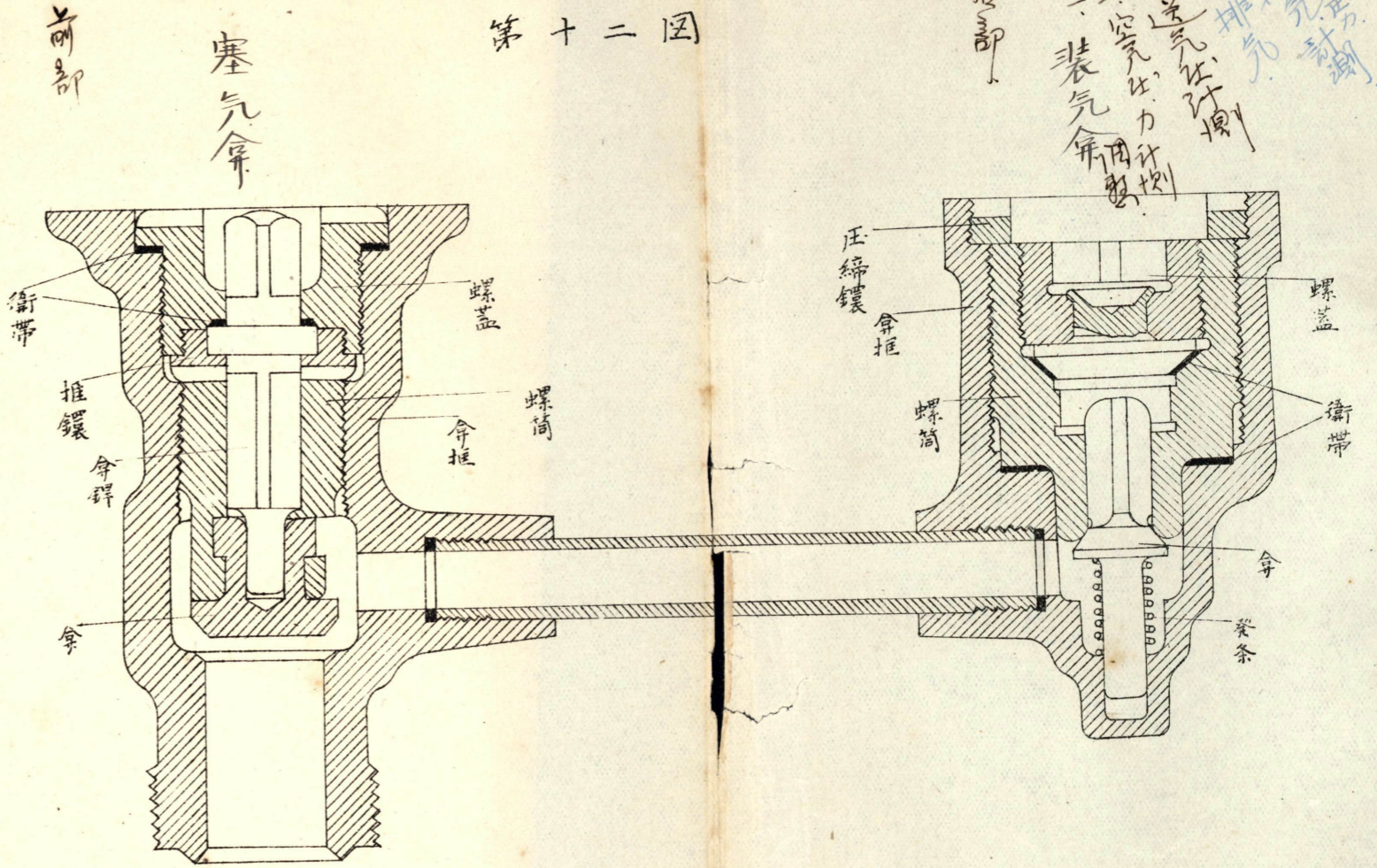
四四式十八吋魚雷尾室

蓋殼形



四四式十八吋魚雷  
塞氣傘及裝氣傘

第十二圖

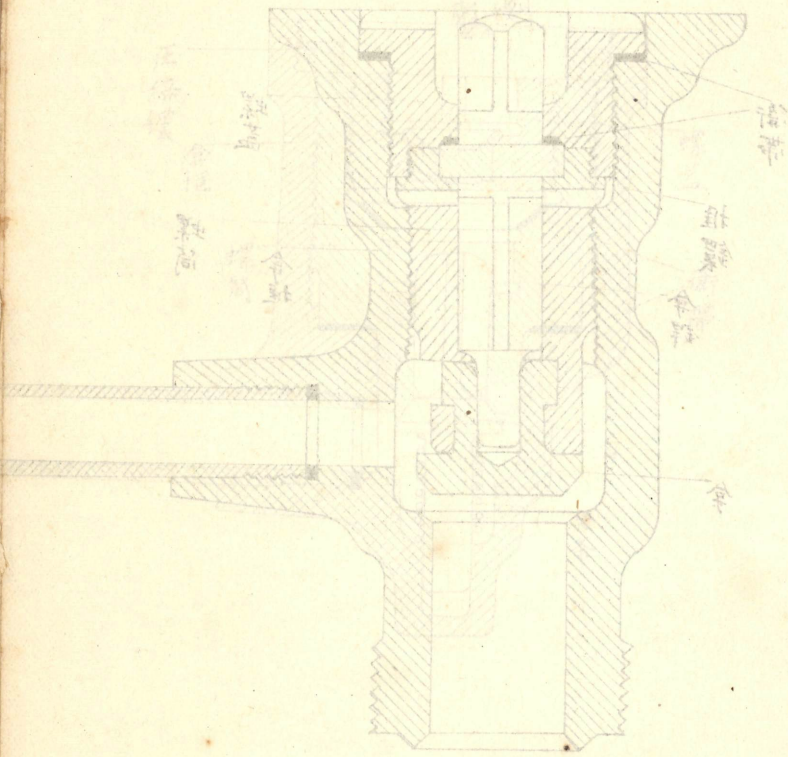


五. 排氣計測  
四. 送氣計測  
三. 空氣力計測  
二. 裝氣傘  
一. 裝氣傘

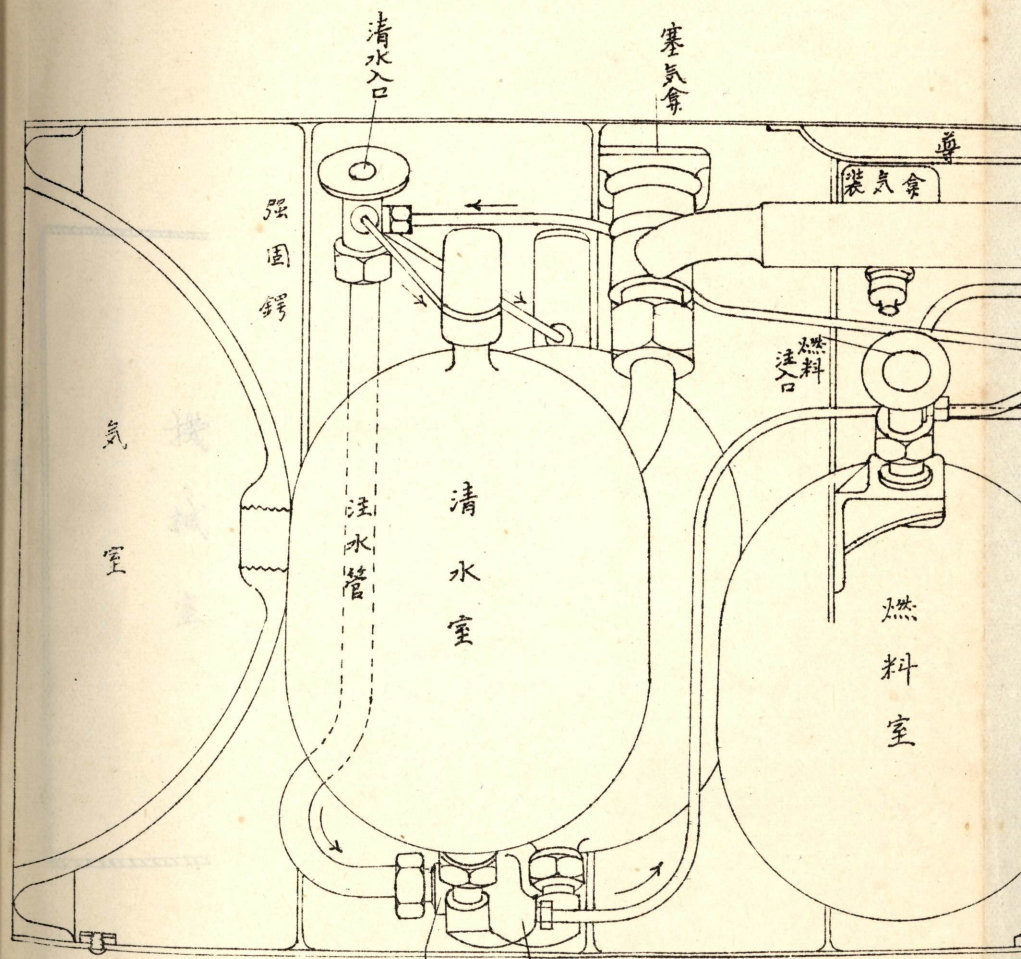
Handwritten notes in blue ink, possibly describing the function or assembly of the device.



図二十



塞気弁の構造  
 四四左十八和重

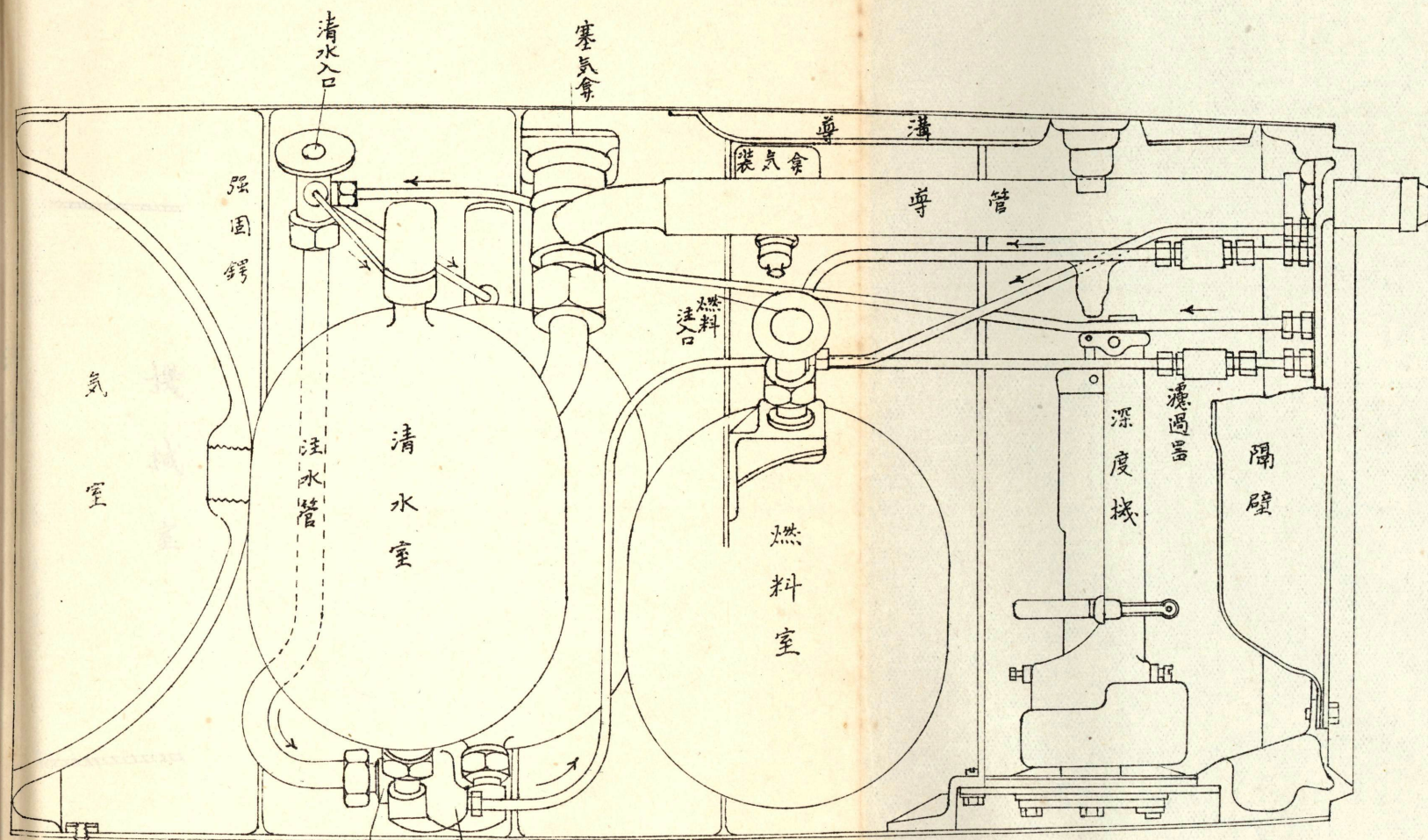


此中各一網究  
 漂過管アリ  
 (但濾過器アルモシハナシ)



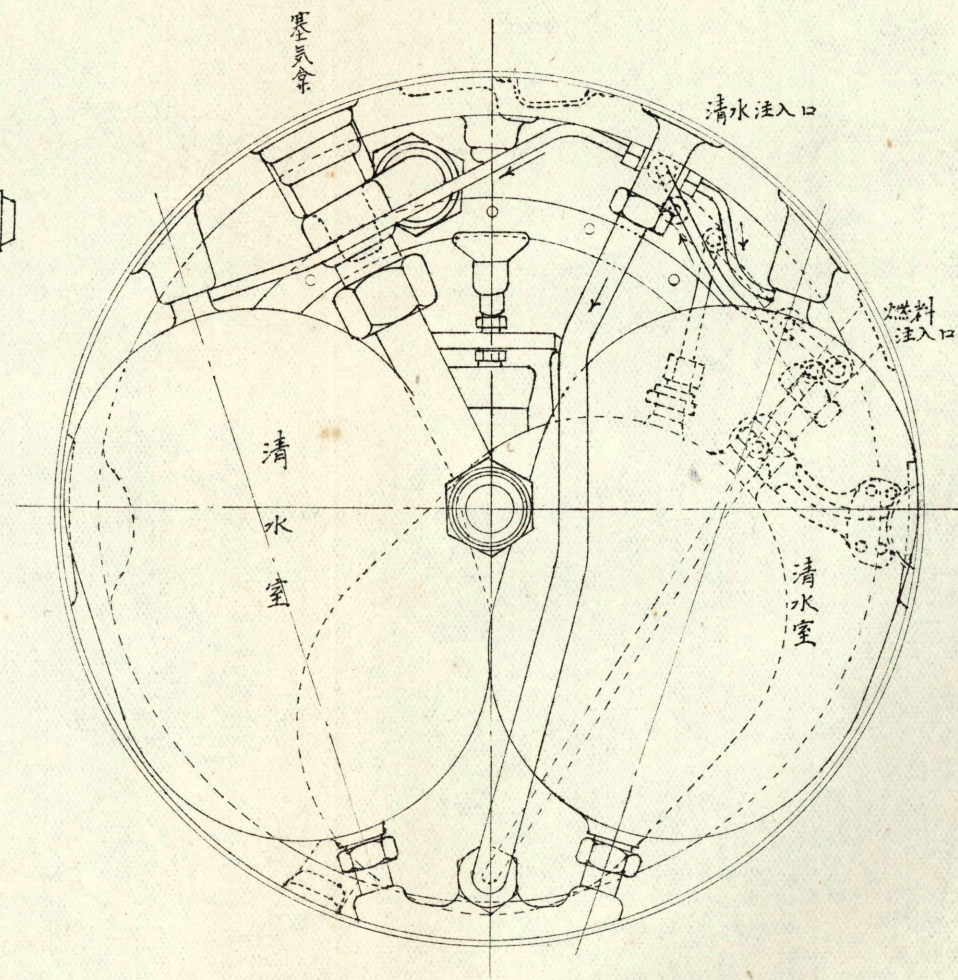
第十三圖

縱断面



此中各一鋼管  
濾過管アリ  
(個濾過管アルモ二六寸)

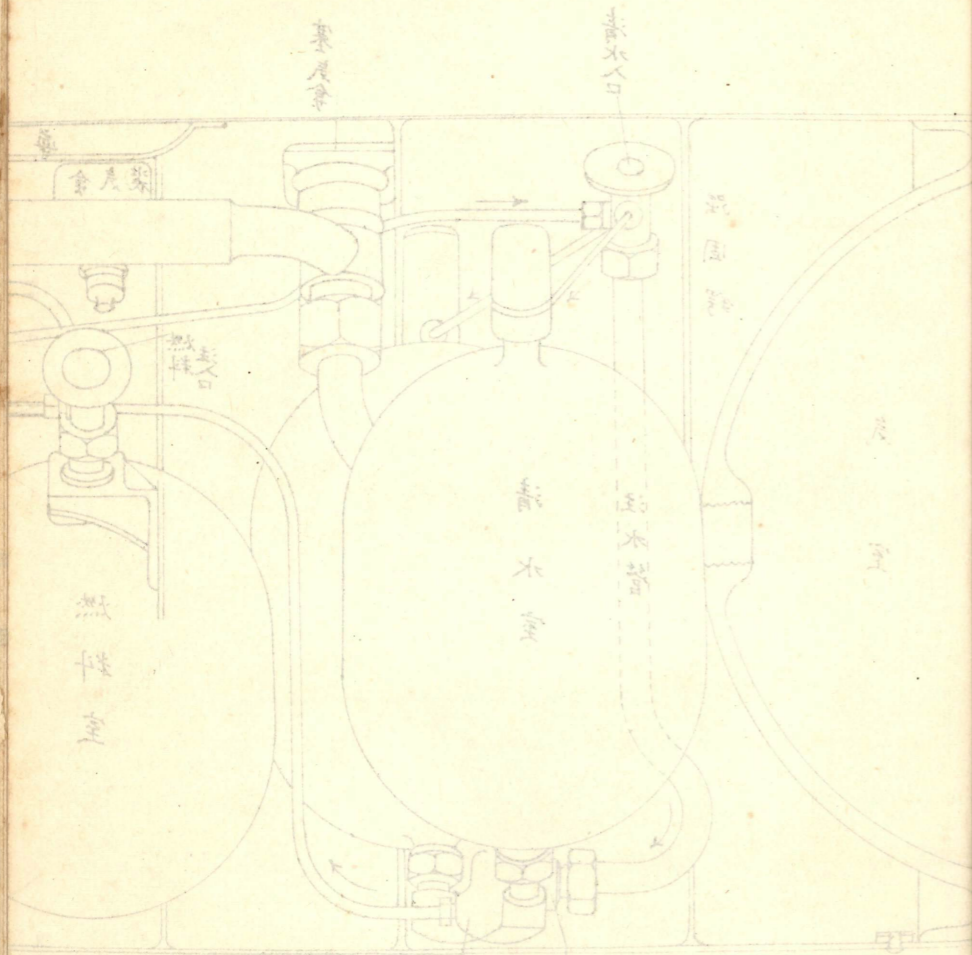
横断面



四四三十八吋奧雷秘密室

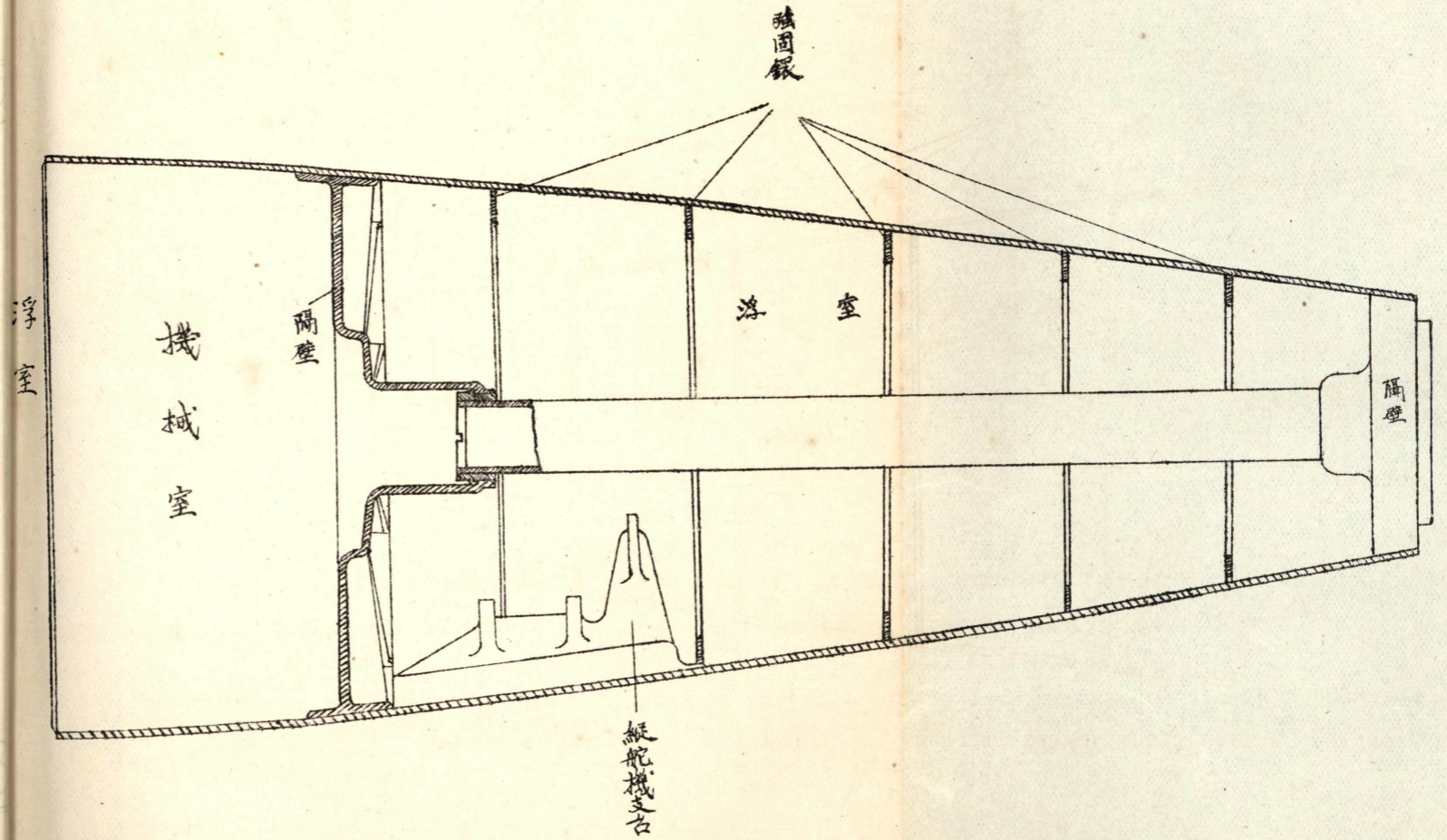
塞辰會小器辰會





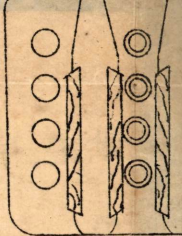
(此圖係由外國  
工程師所繪  
其尺寸與  
本機無異)

第十四圖



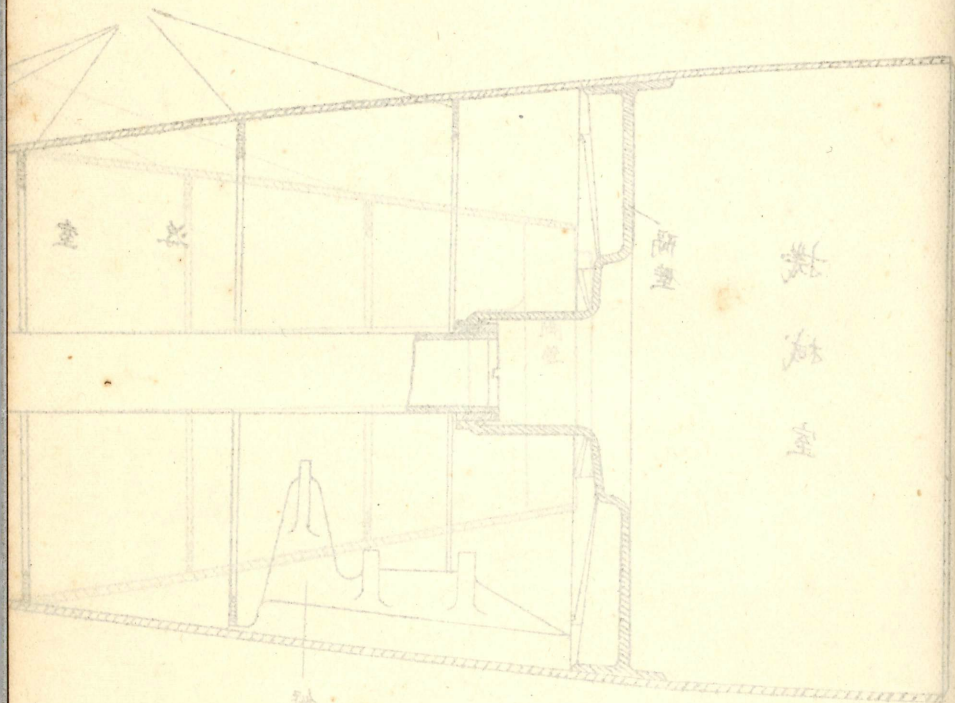


導子



圖四十第

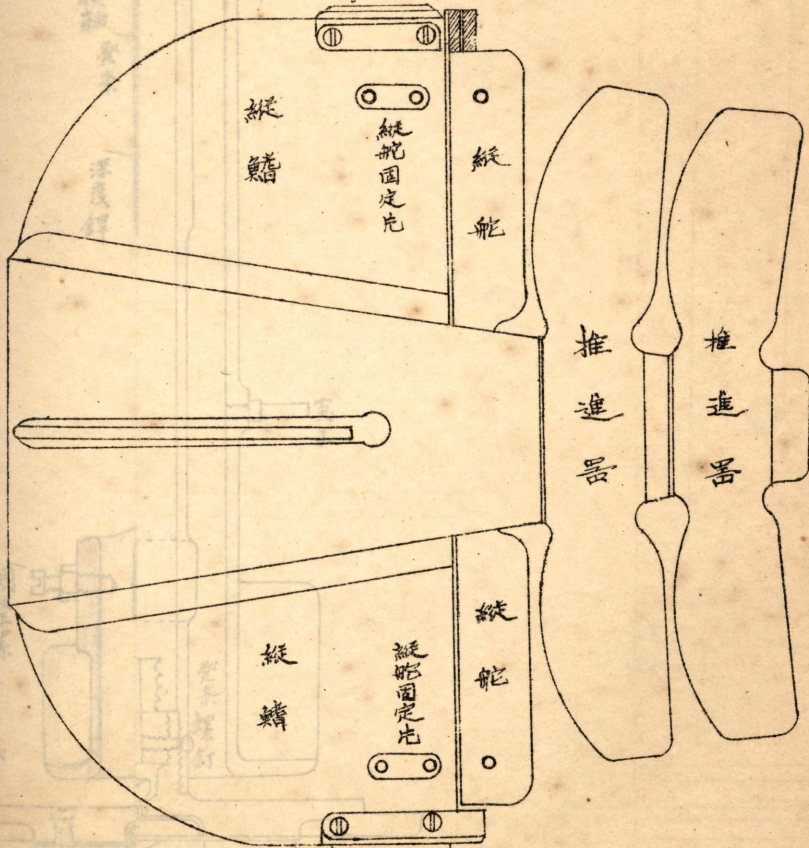
船圖



船底

四分一

上方尾部導子



縱舵

縱舵固定片

縱舵

推進器

推進器

縱舵

縱舵固定片

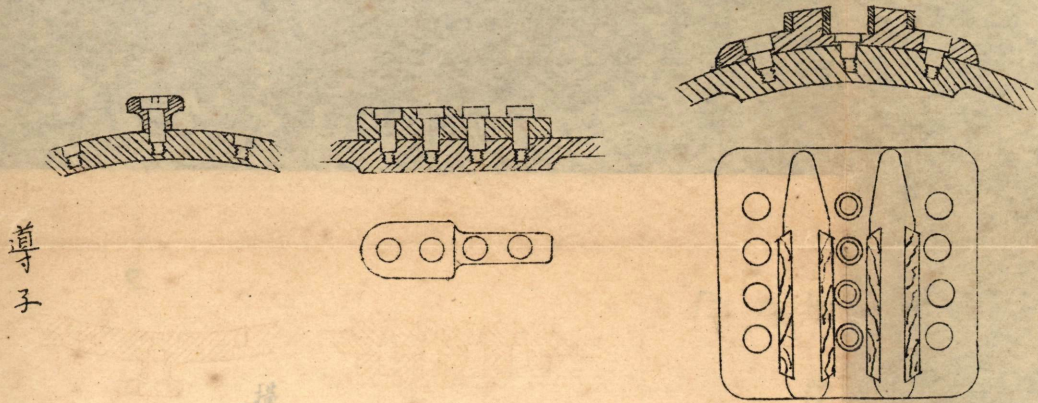
縱舵

下方尾部導子



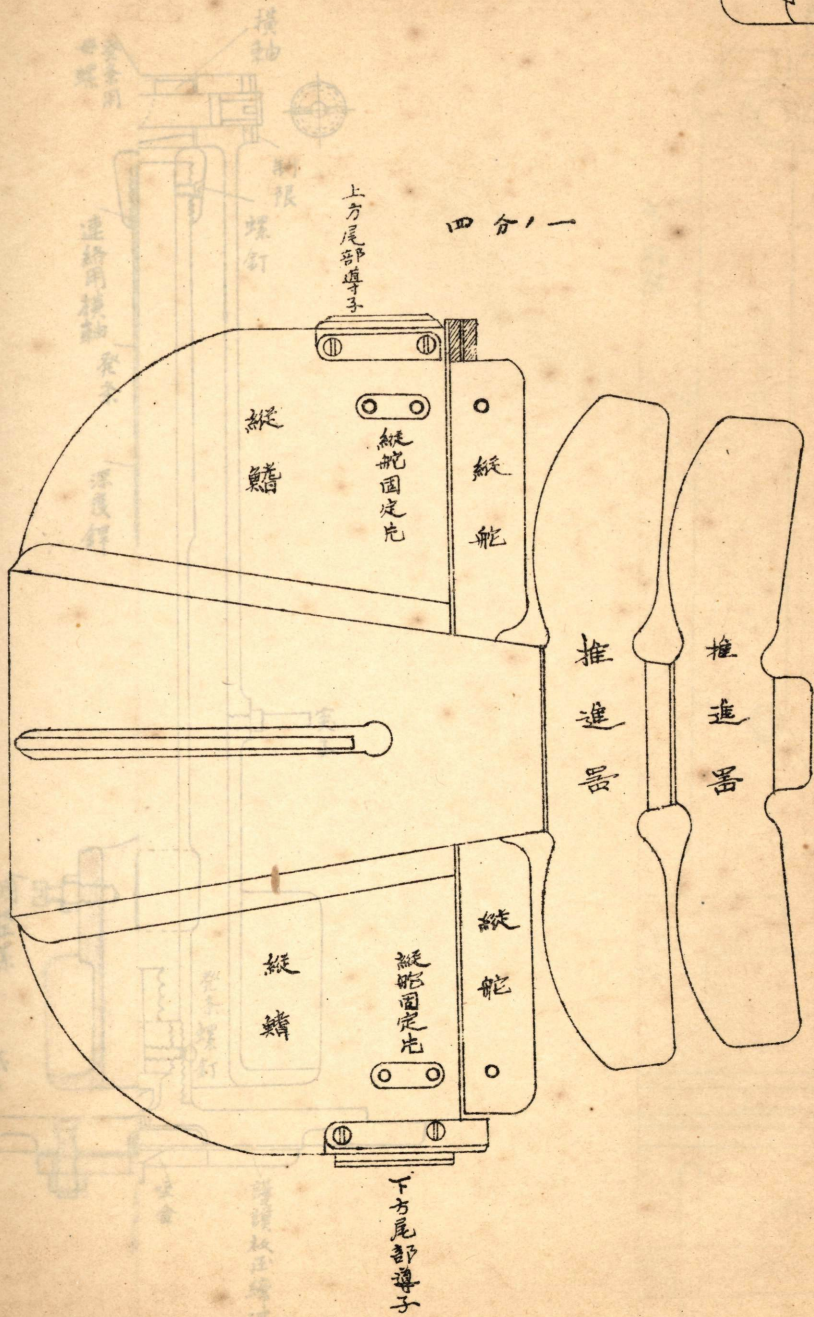
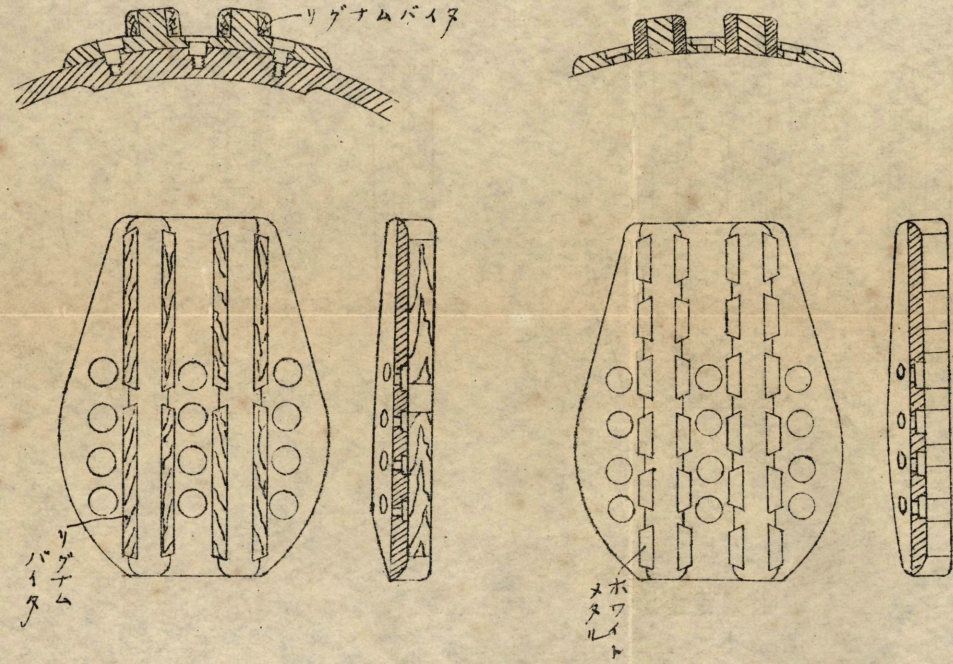
第十五回

水上用氣室導子 (T形)

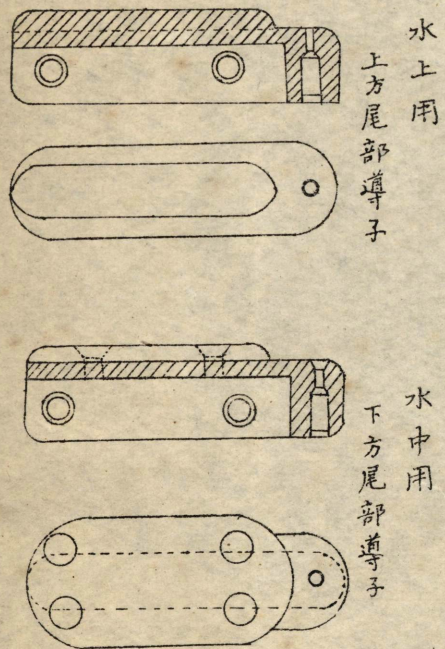


導子

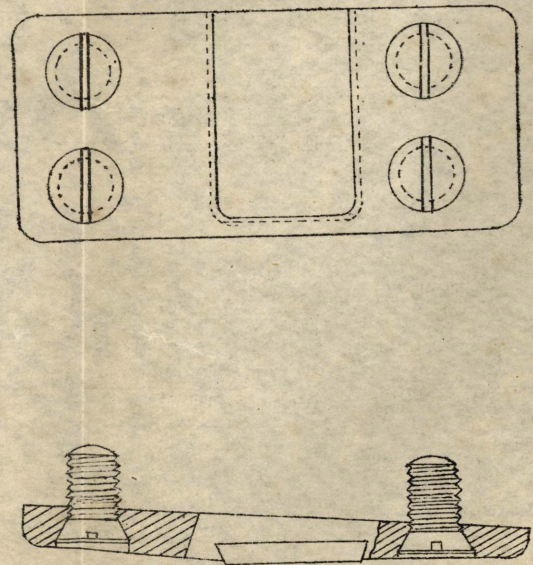
水中用氣室導子 (U形)



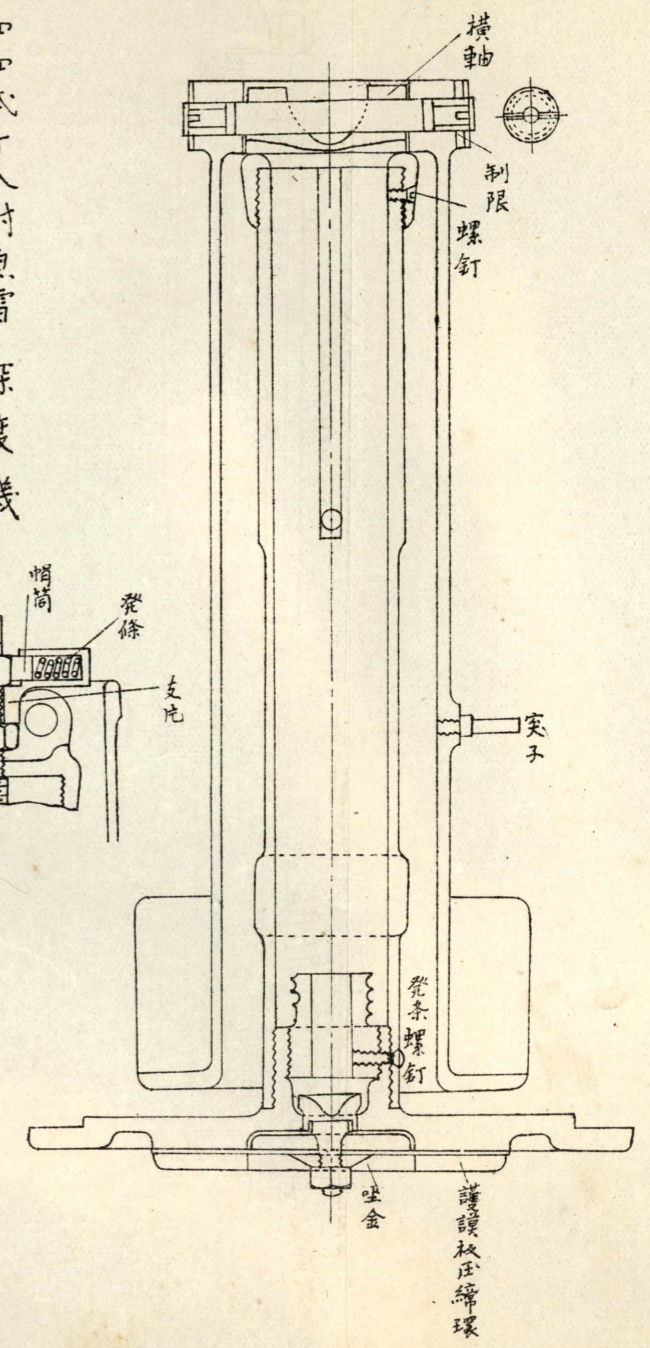
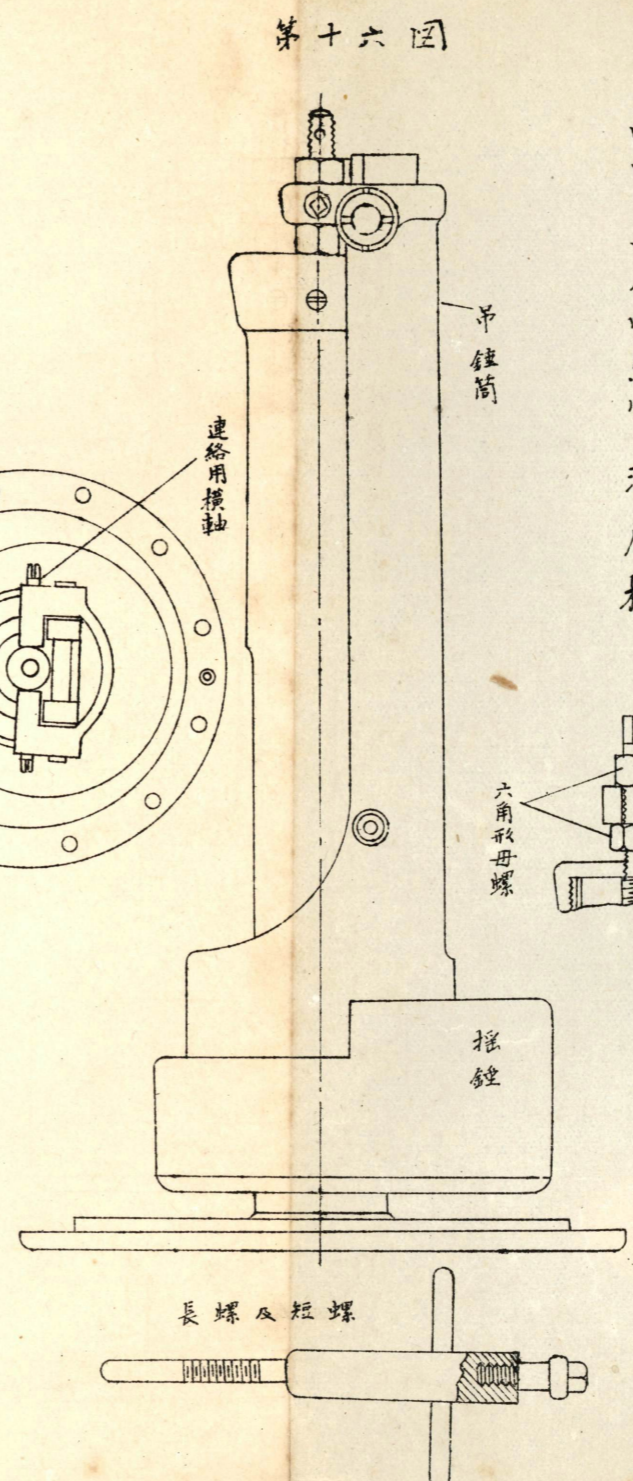
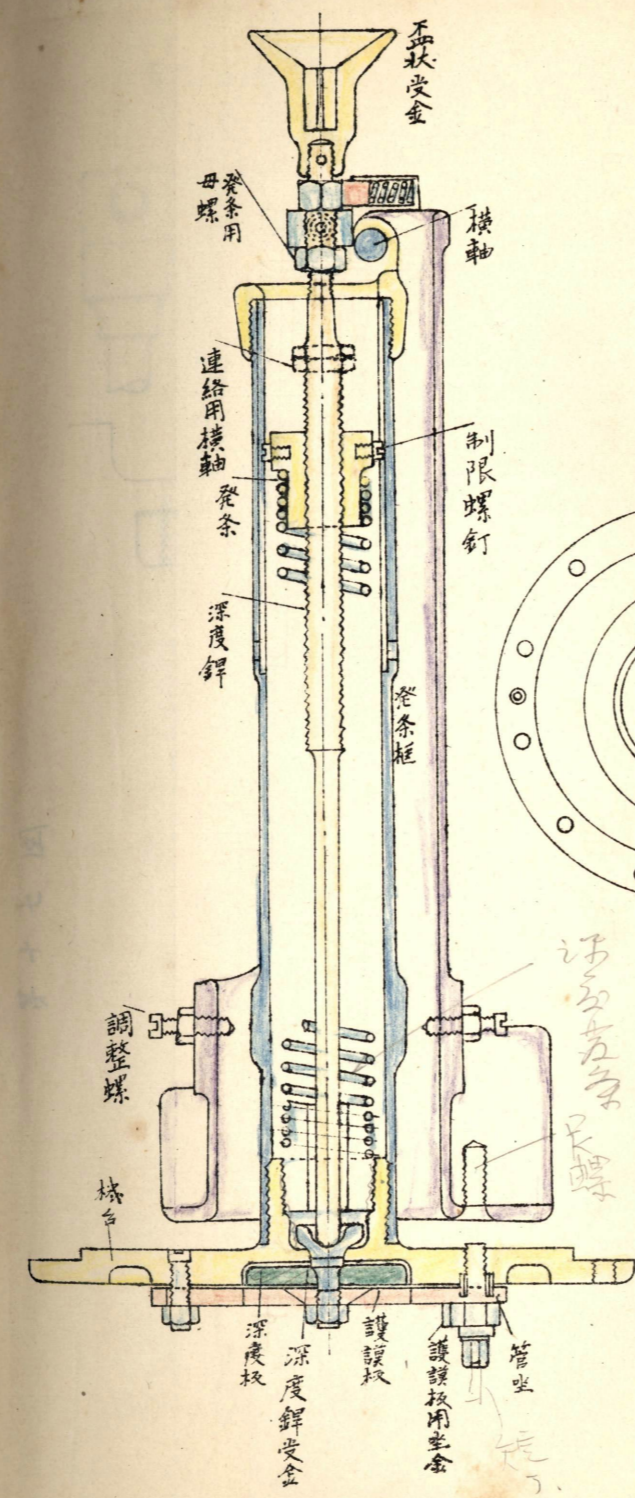
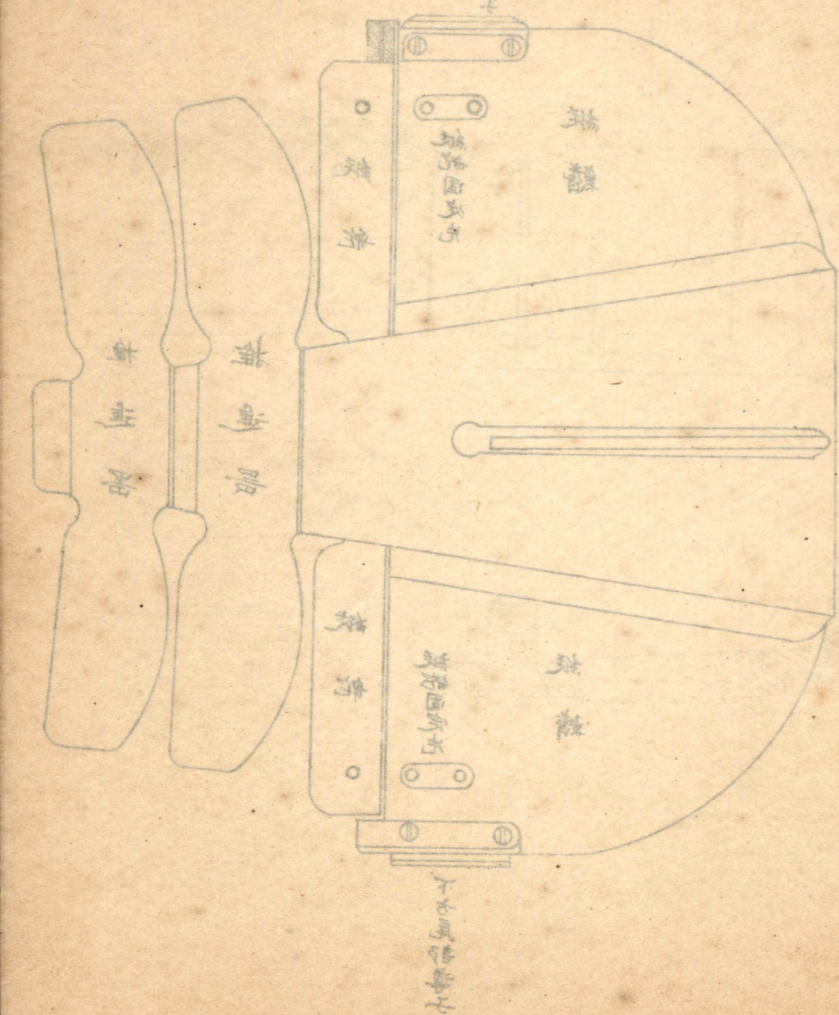
二分ノ一



側方導子





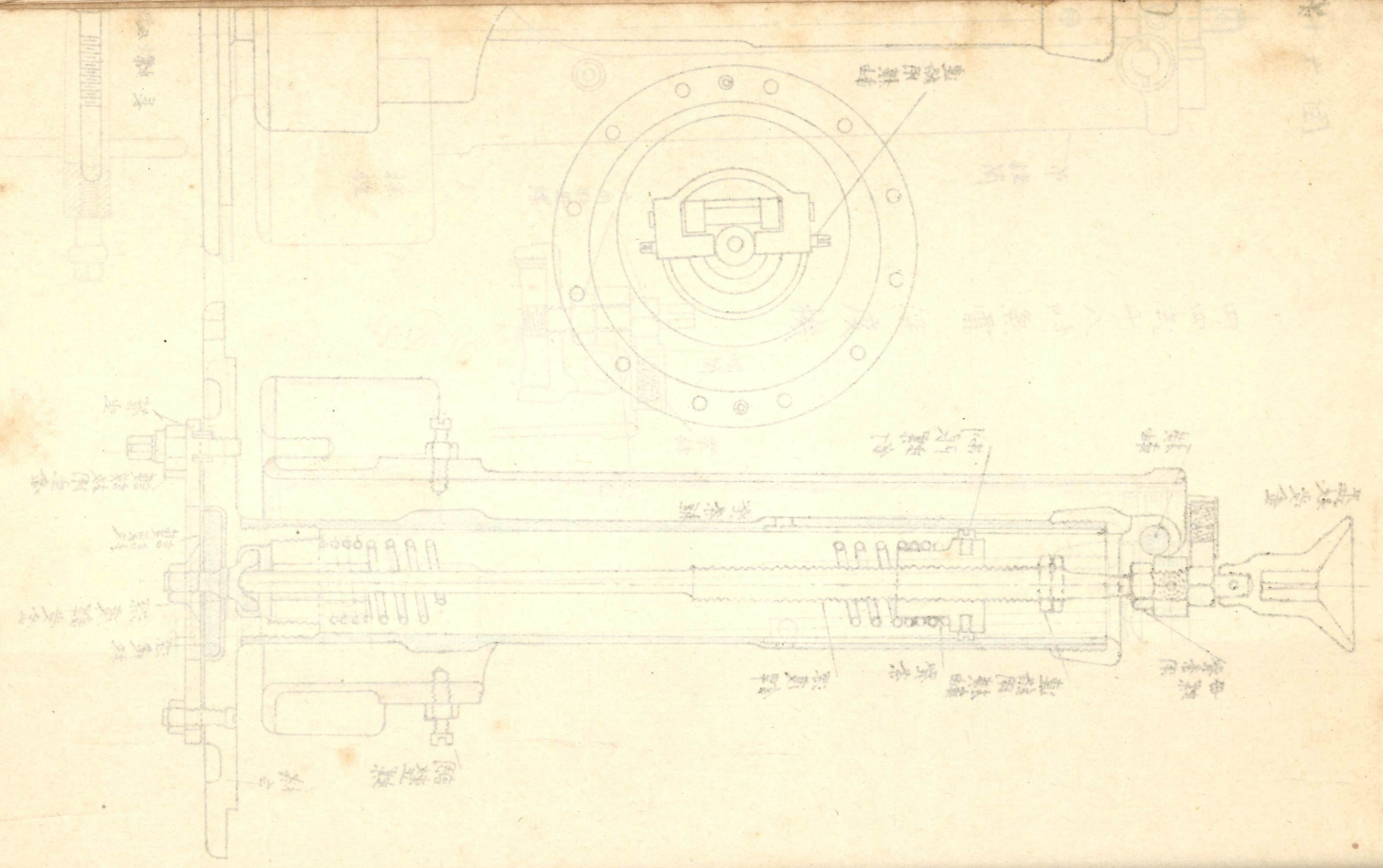


第十六圖

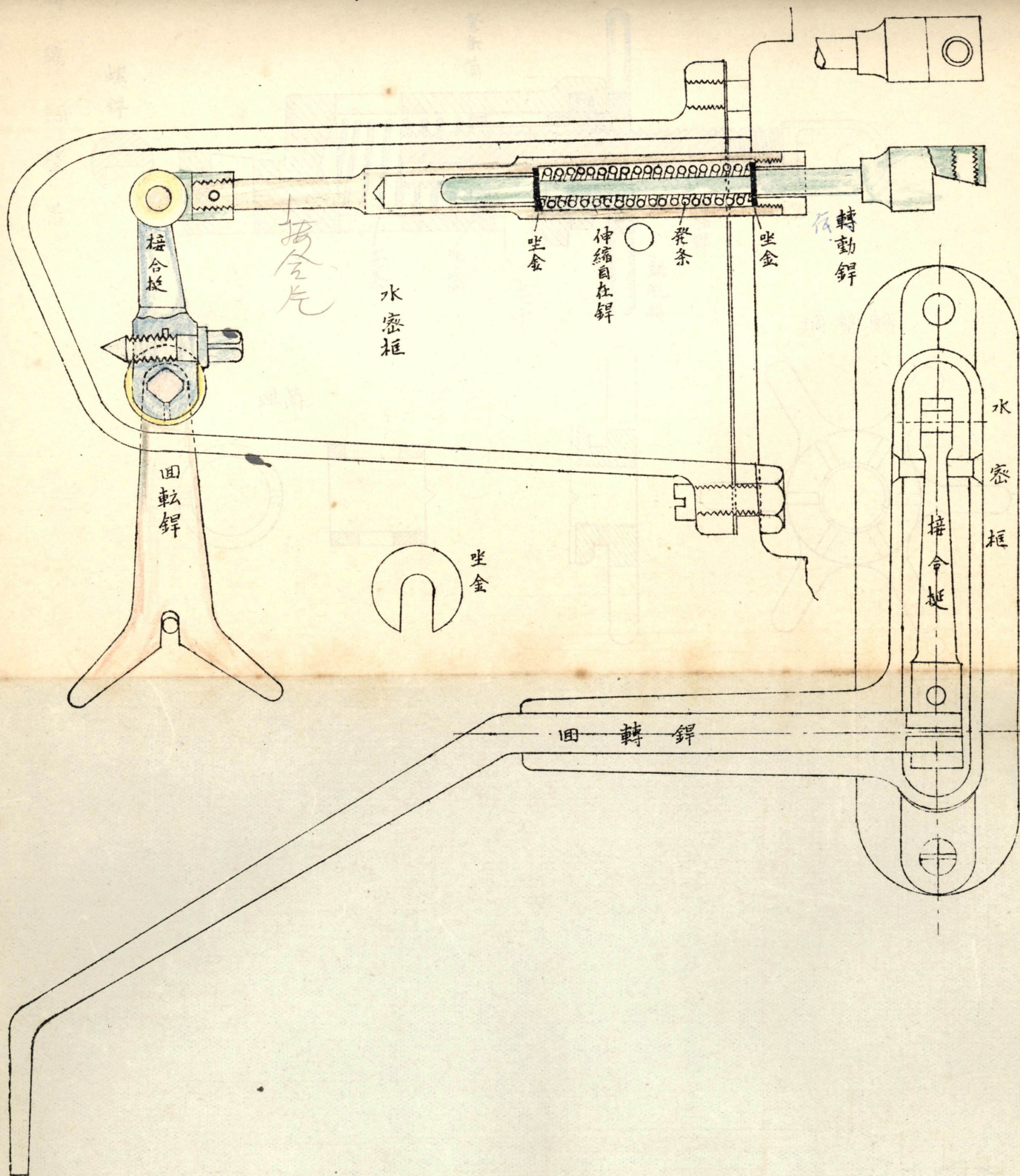
四四式十八吋魚雷深度機

長螺及短螺



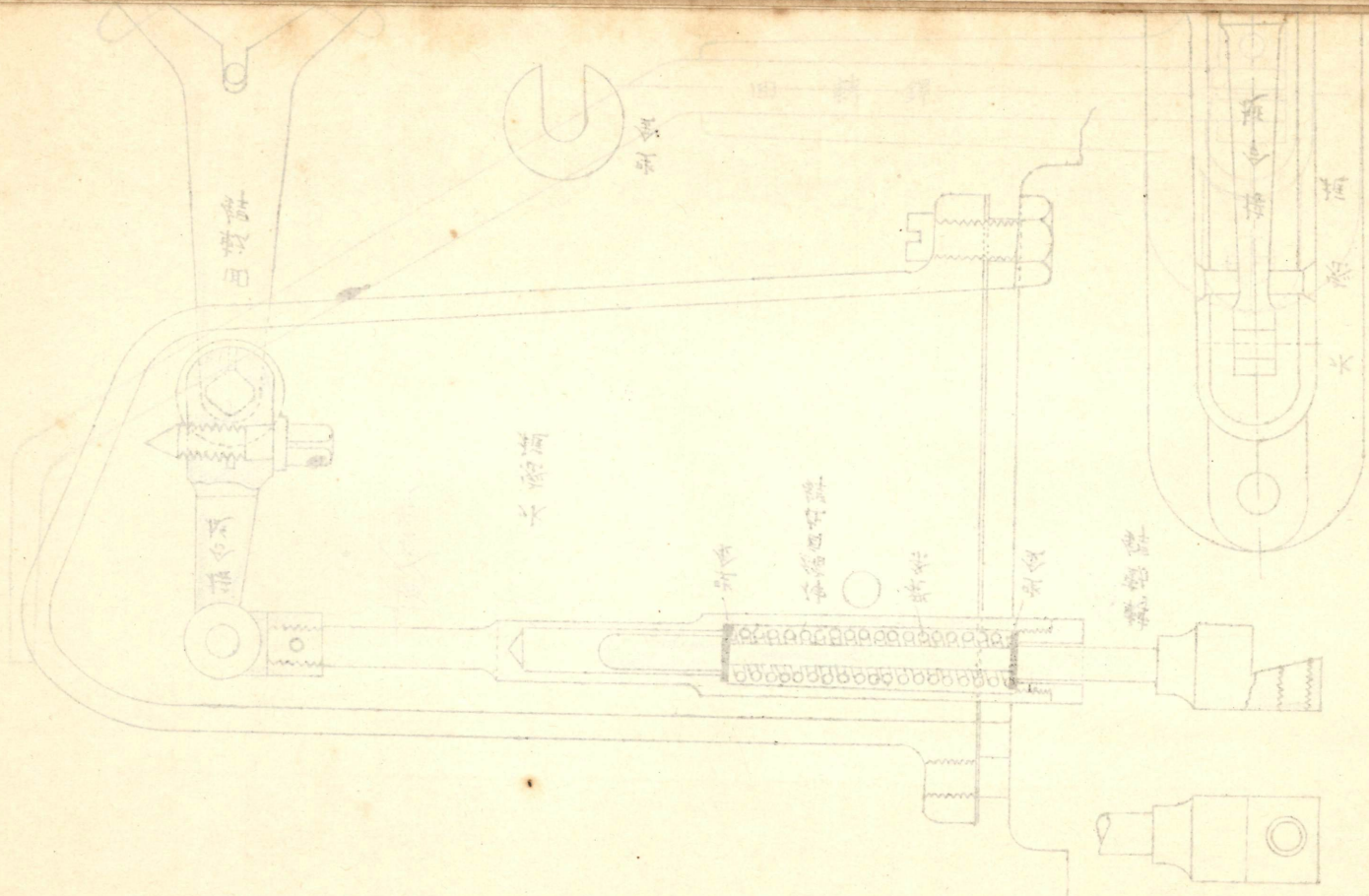


第十七圖



四四式十八吋魚雷水密櫃



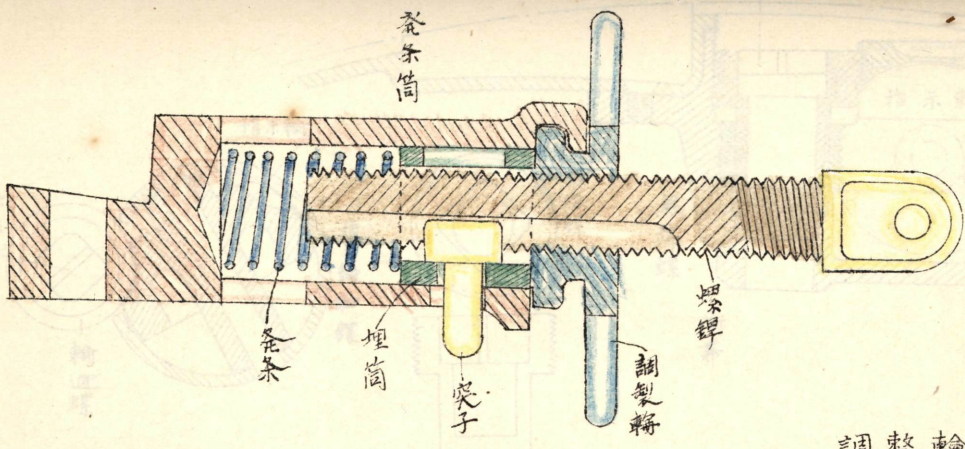


民國八年五月廿一日

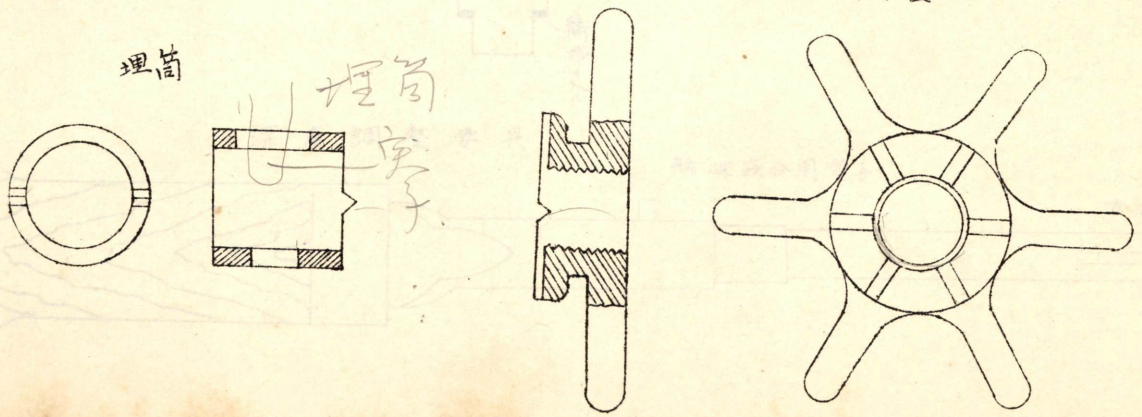
圖十八

第十八圖

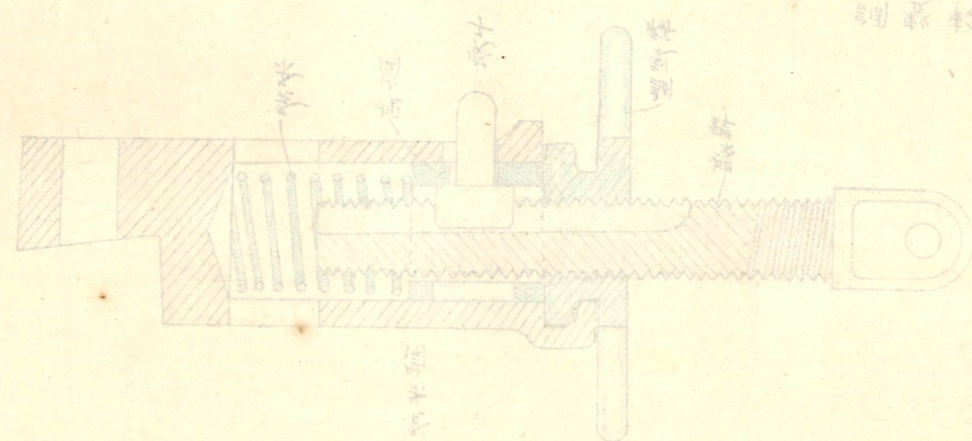
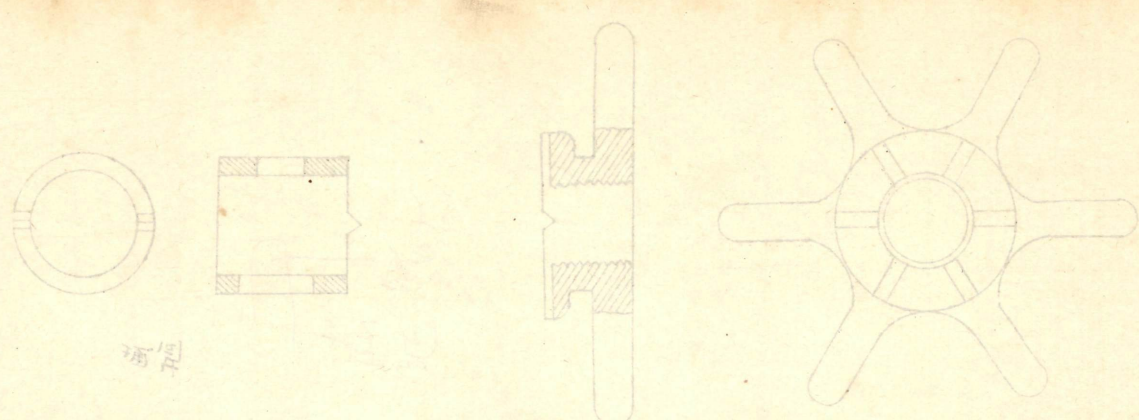
伸縮調整器



調整輪

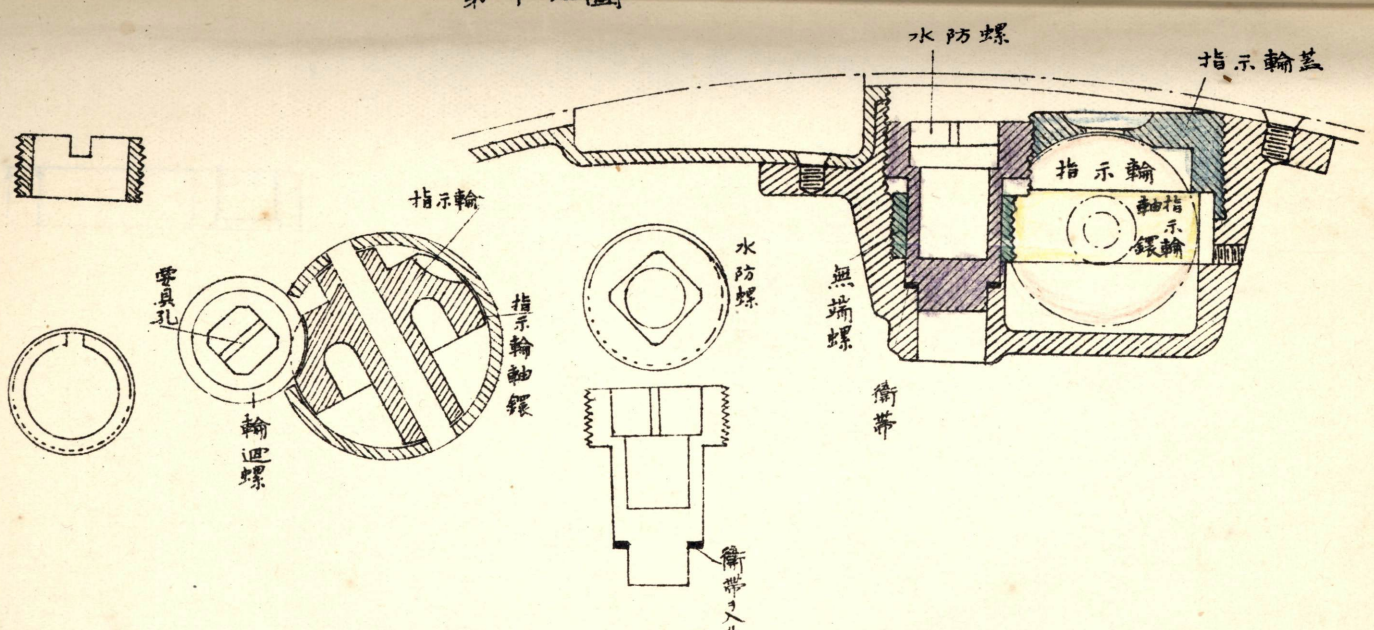




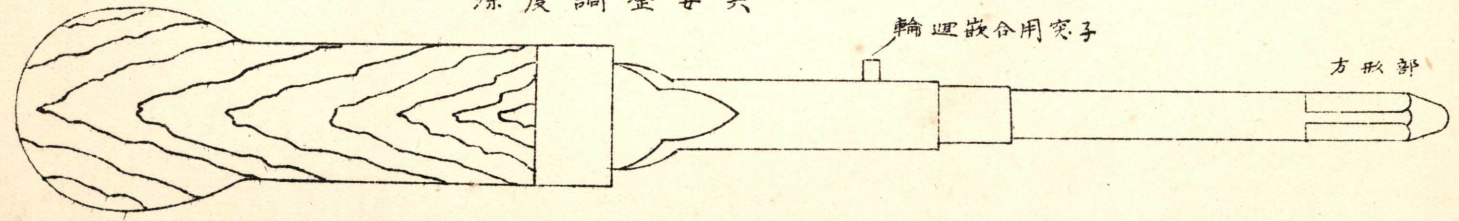


第十九圖

四四式奧雷深度整定裝置



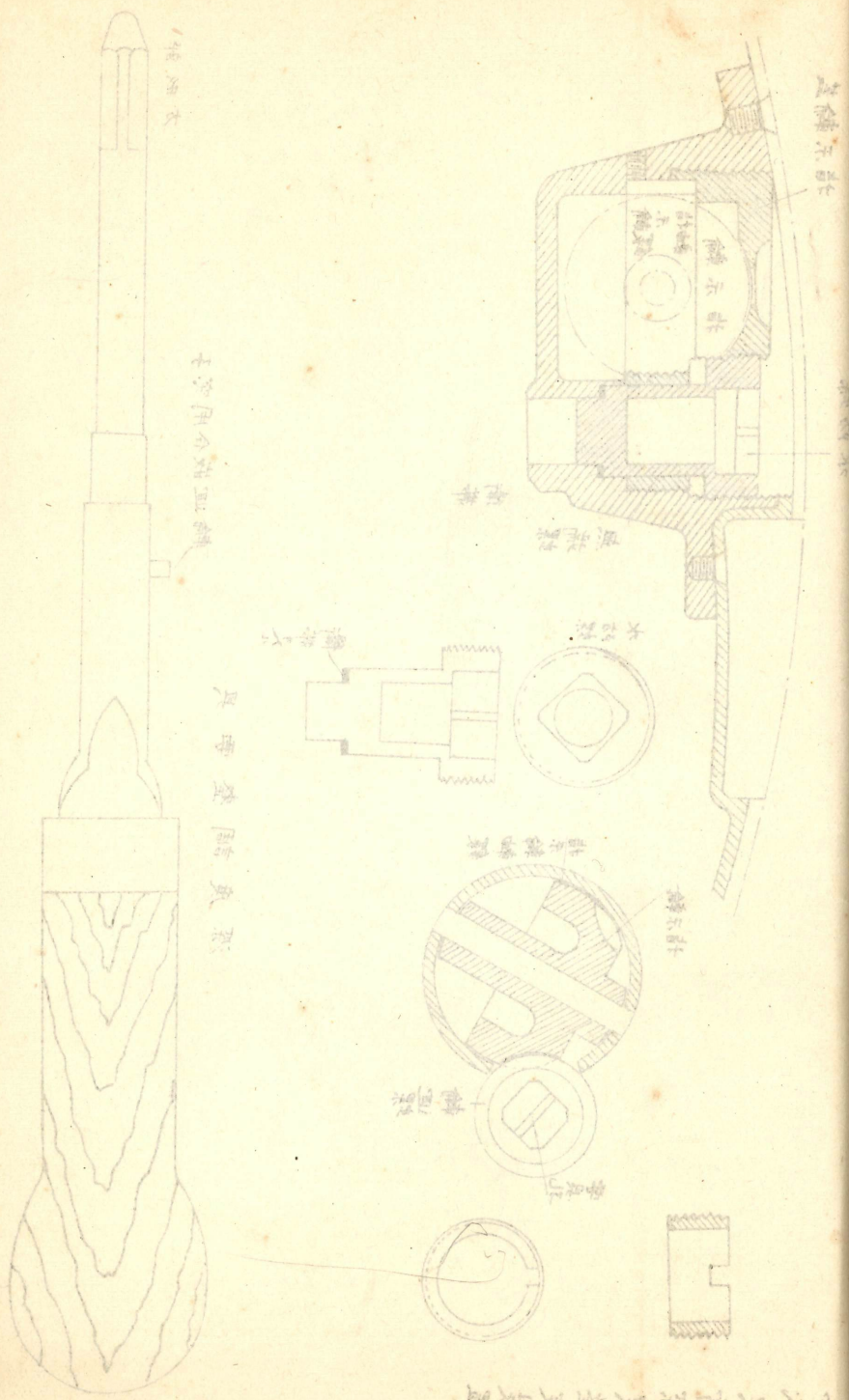
深度調整要具



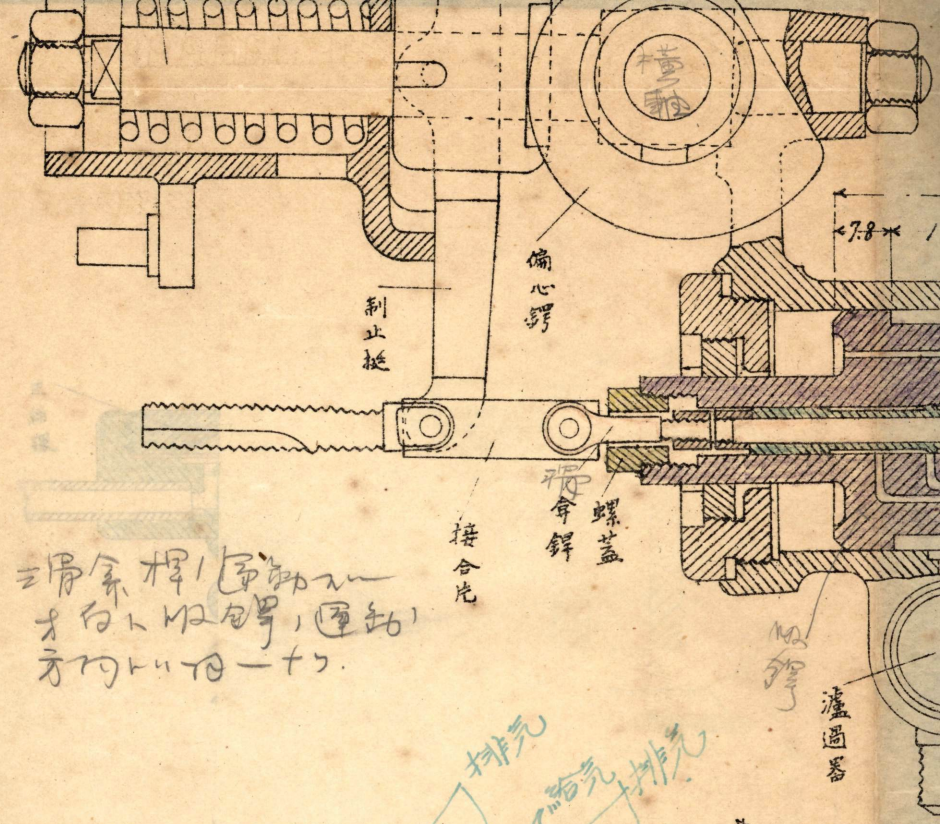
輪匣嵌合用突子

方形部

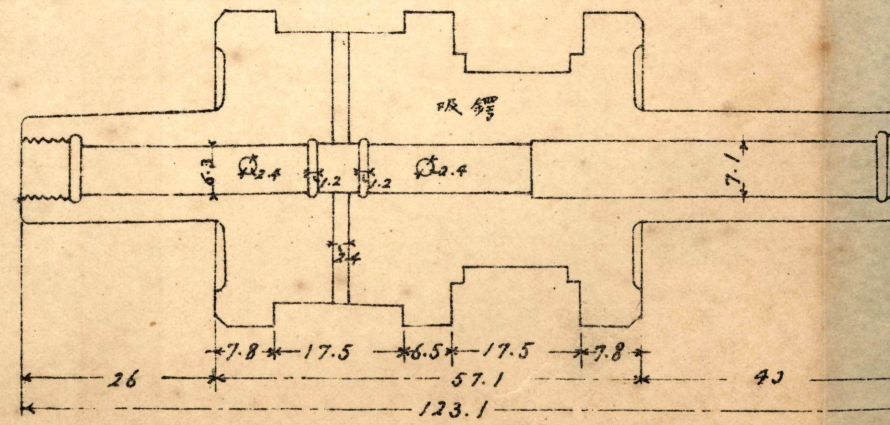
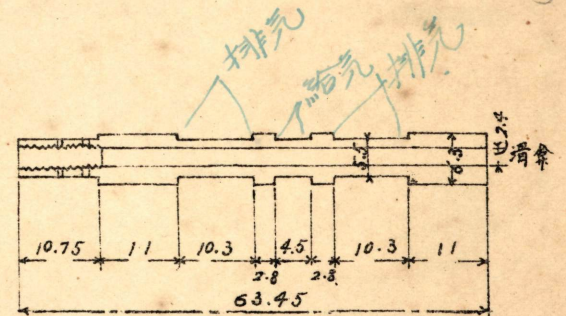




四六奥雷架具轴套轴套

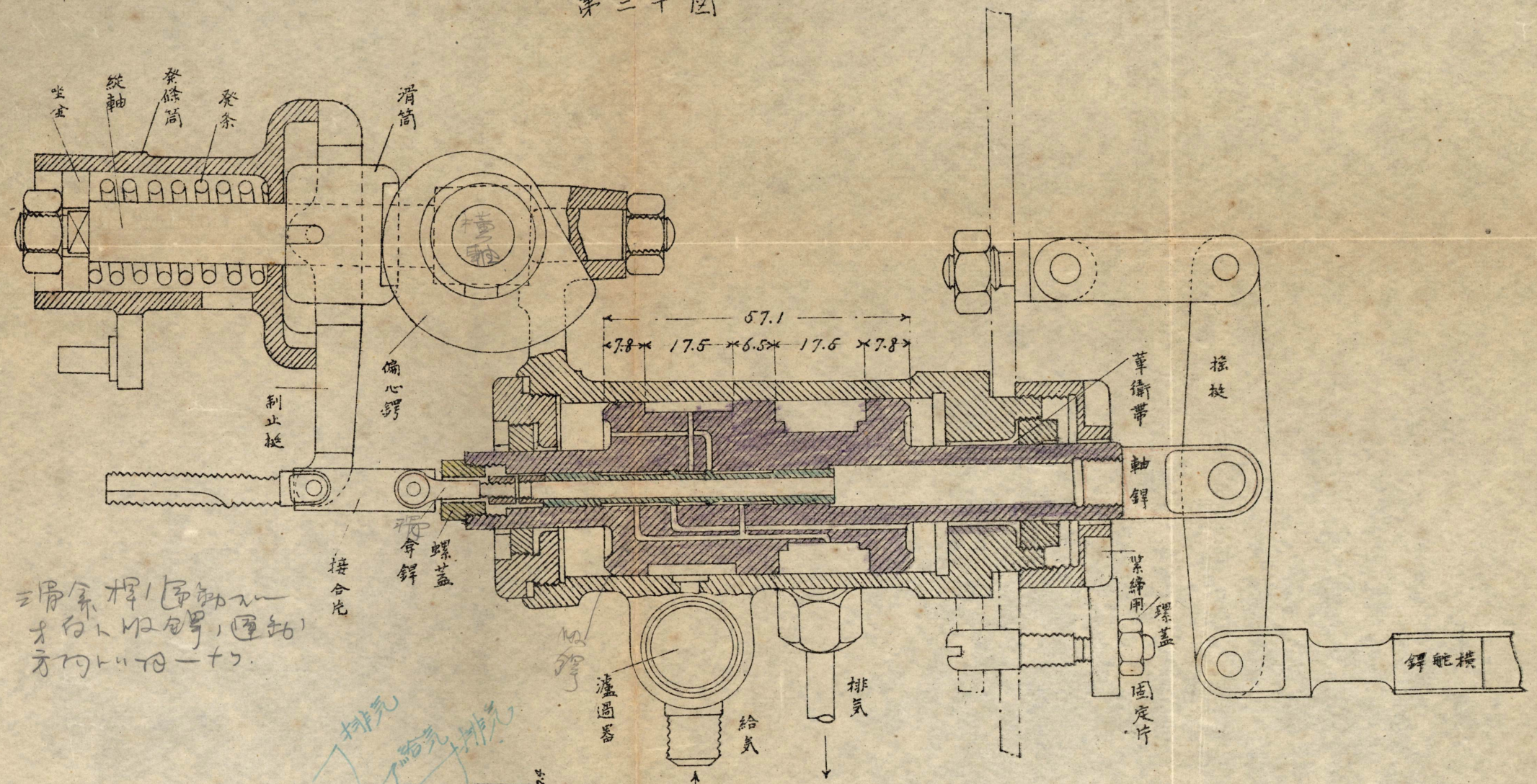


三带系桿1節部之  
才白1吸包等, (圖註)  
才白111111-11

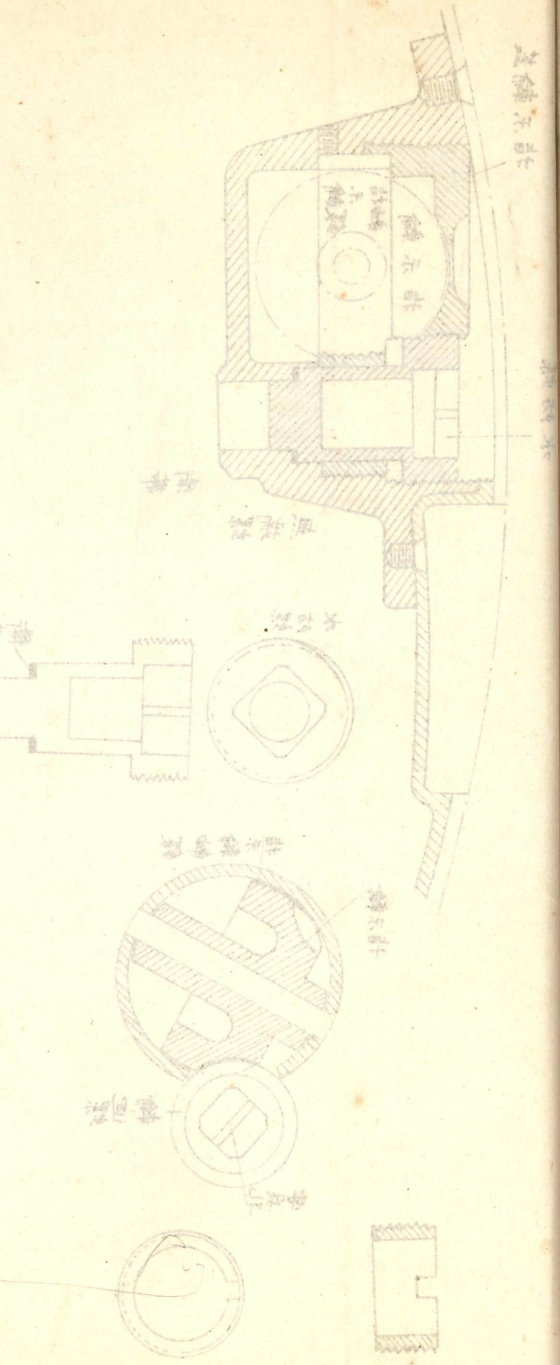
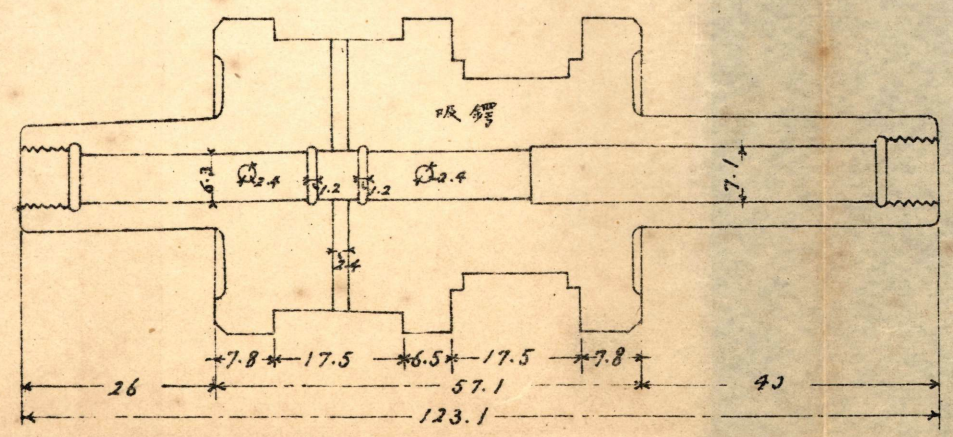
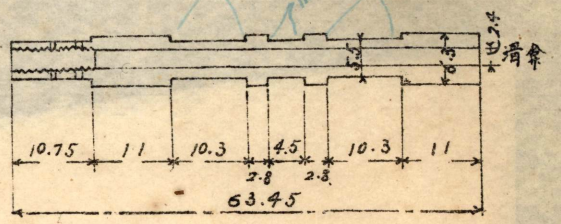




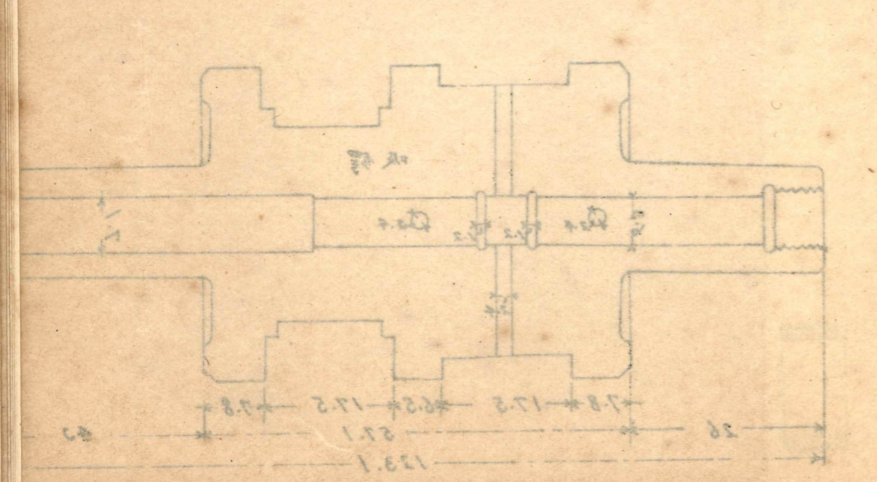
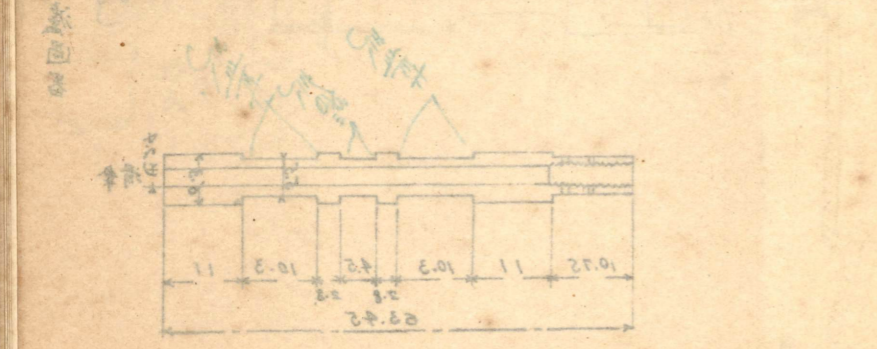
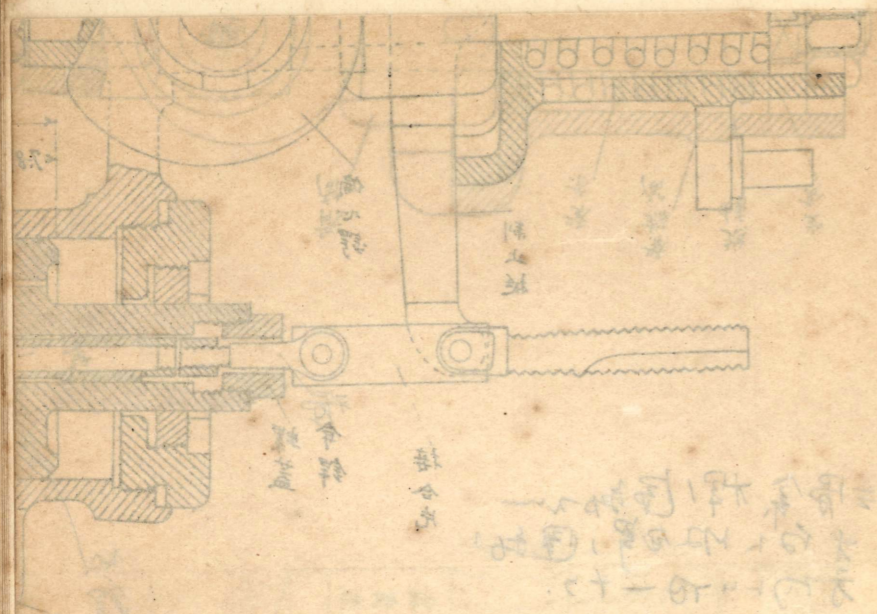
第二十圖



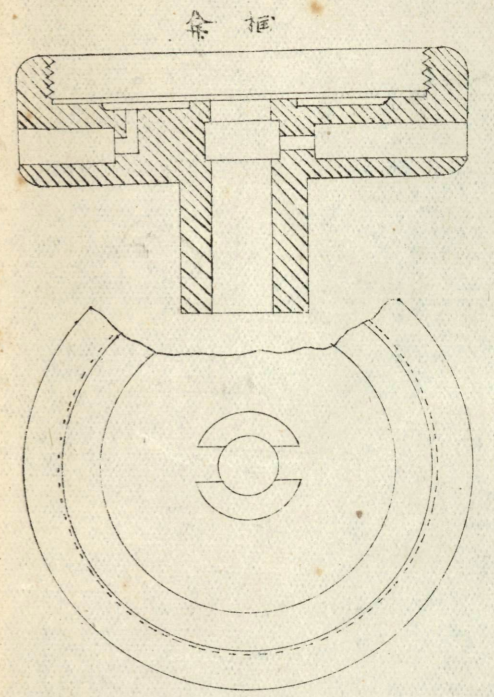
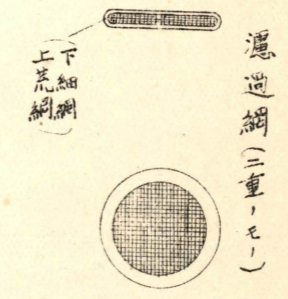
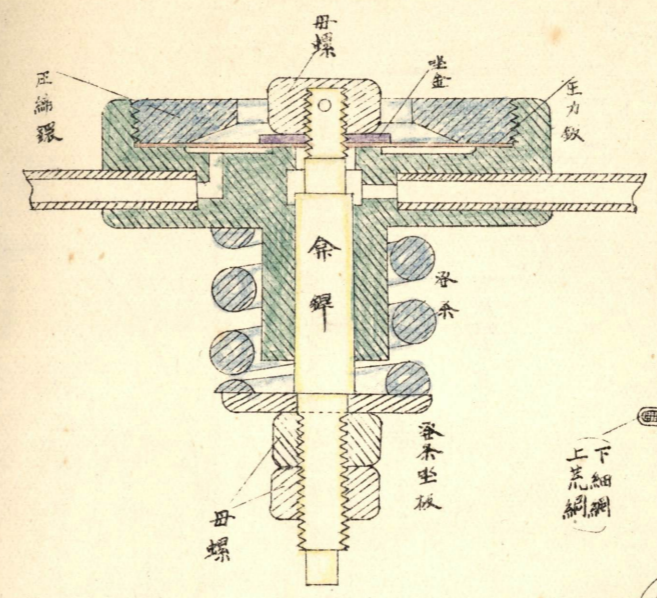
三層系桿(圖部)一  
 才白(收)包(圖部)  
 方(向)上(下)一(十)



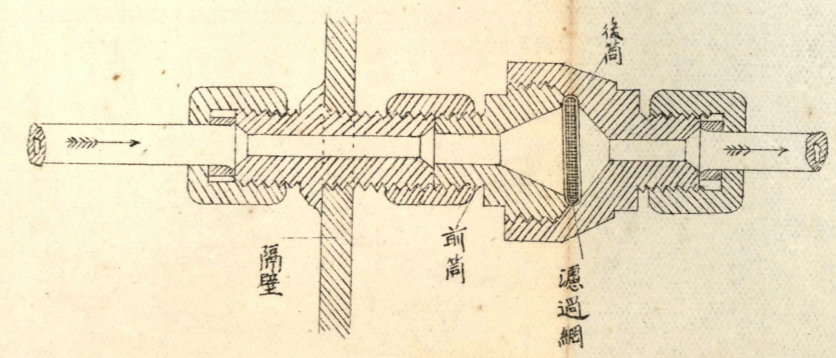




第二十一圖



濾過器及調和器

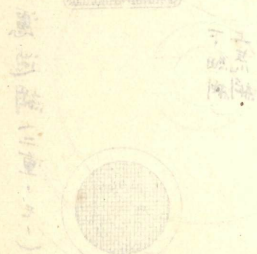
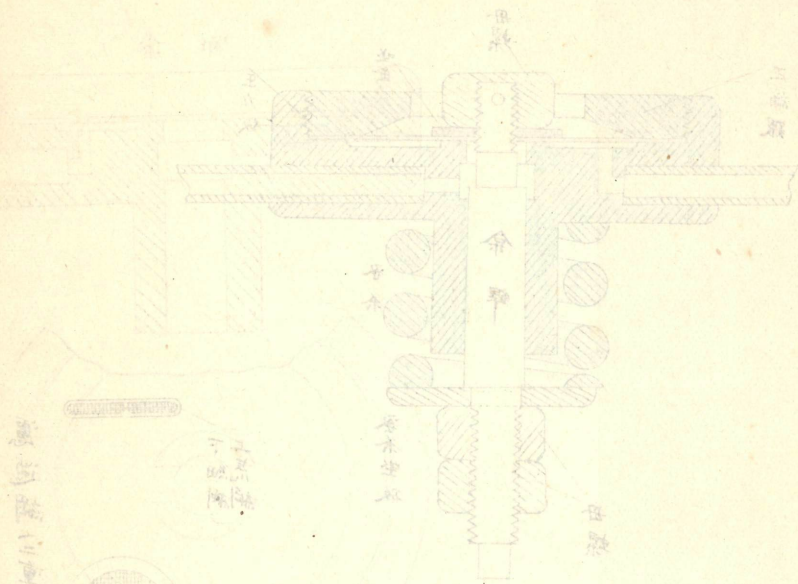


濾過器

濾過網(三重, 毛)

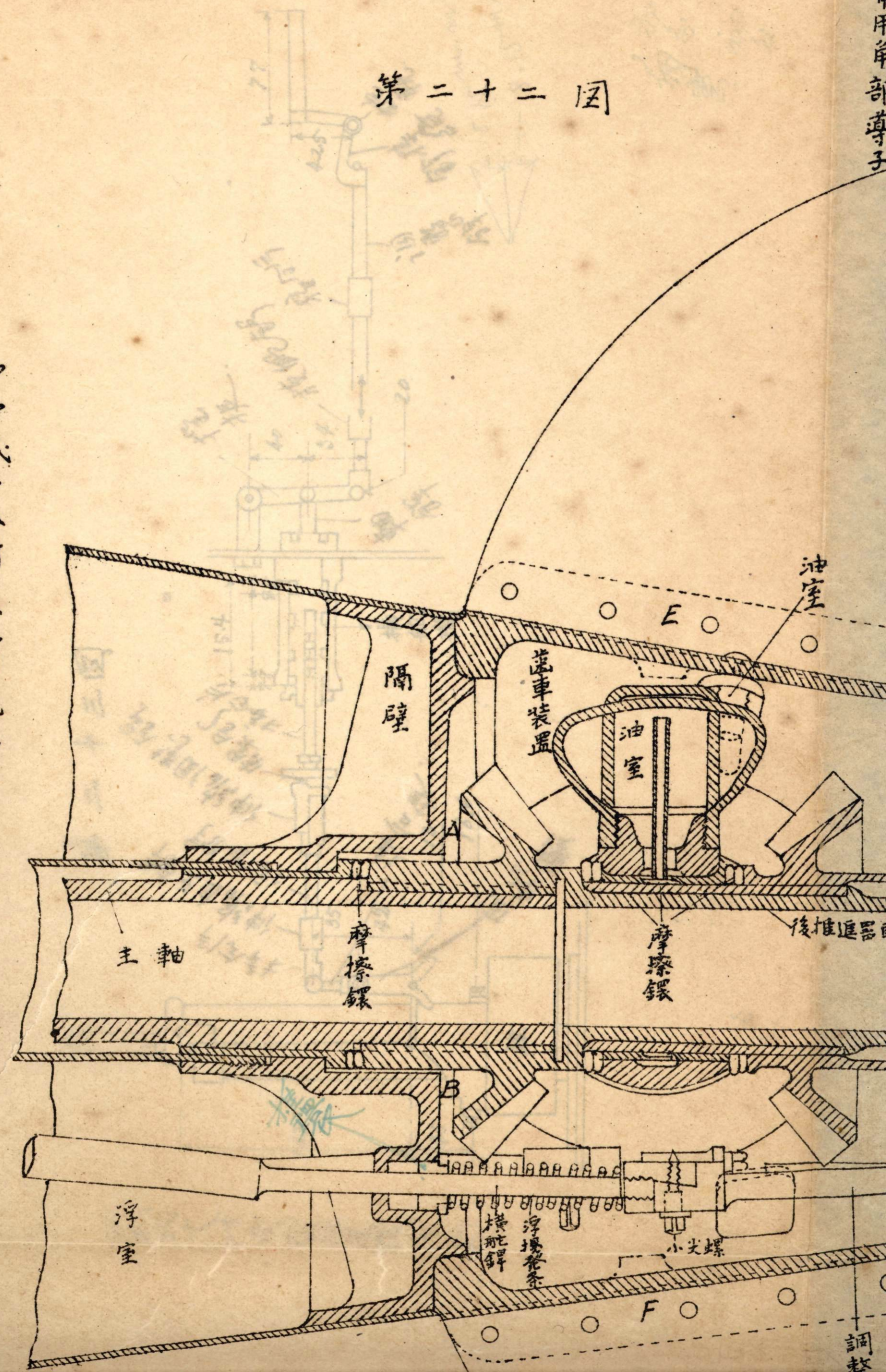


圖一十一



第二十二圖

四四式十八吋魚雷尾部

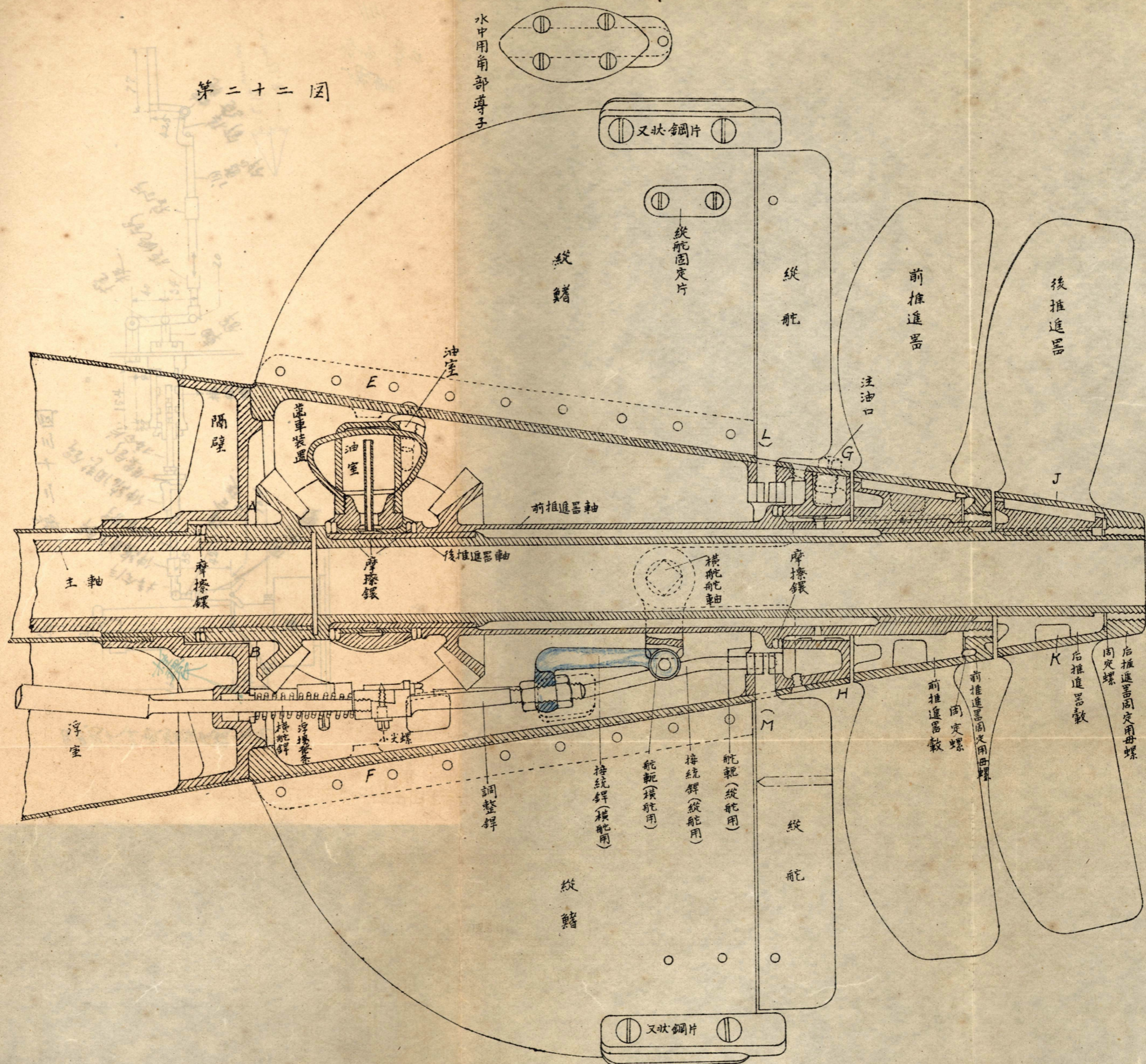


水中用岸音導子



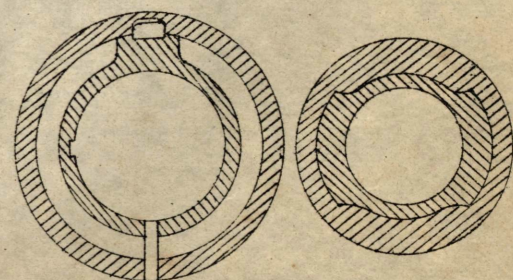
第二十二圖

四四式十八吋魚雷尾部



JK部切斷圖

AB部切斷圖



水中用角部薄子

叉狀鋼片

縱舵固定片

縱舵

縱舵

前推進器

後推進器

注油口

油室

隔壁

運車裝置

油室

前推進器軸

後推進器軸

主軸

摩擦鑲

摩擦鑲

摩擦鑲

橫舵軸

浮室

調整螺絲

小螺絲

調整螺絲

接統螺絲(橫舵用)

舵舵(橫舵用)

接統螺絲(縱舵用)

舵舵(縱舵用)

縱舵

前推進器殼

固定螺絲

前推進器固定用母螺絲

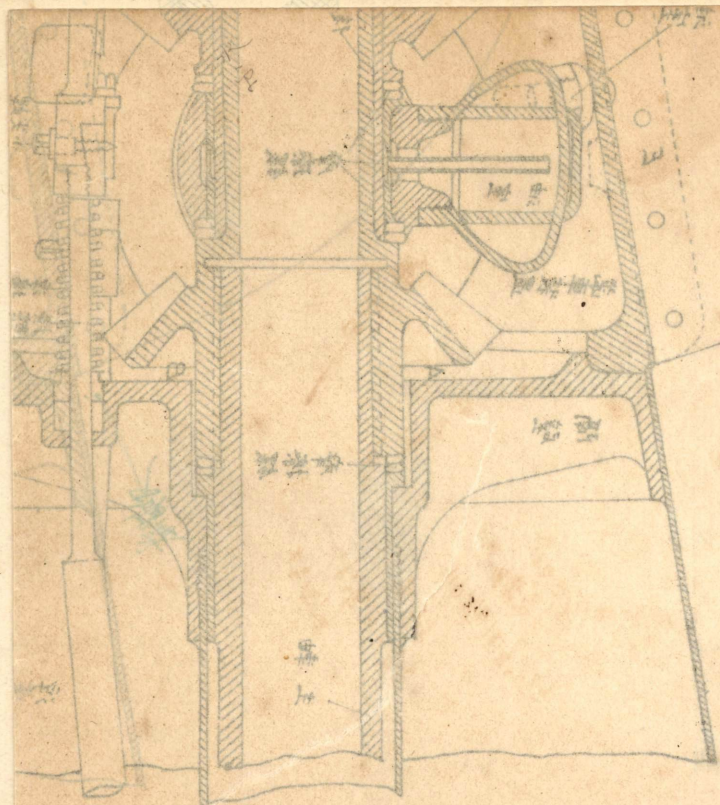
後推進器殼

固定螺絲

後推進器固定用母螺絲

叉狀鋼片

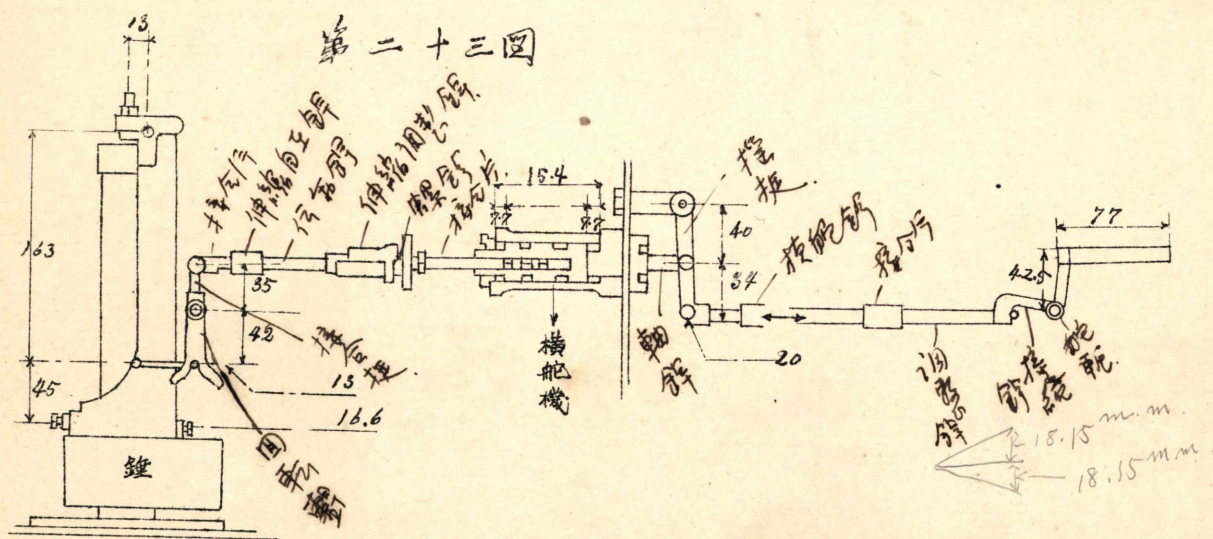




四  
十  
十  
米

四百七十八吋與龍岡塔

四百七十八吋與龍岡塔機作動



三  
三  
三