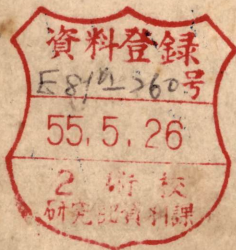


造船學附圖

第三學年

明治四十一年五月印刷

海軍機關學校



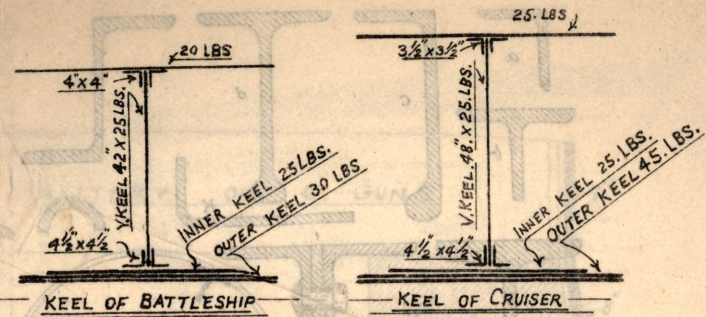


FIG. 1.

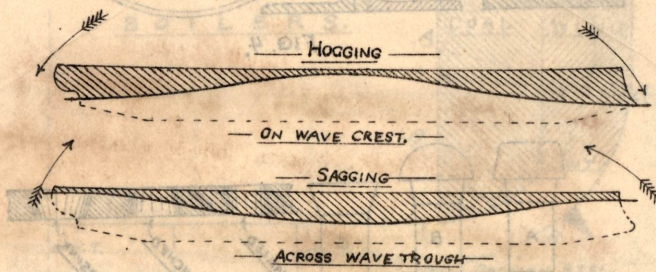


FIG. 2.



FIG. 3.

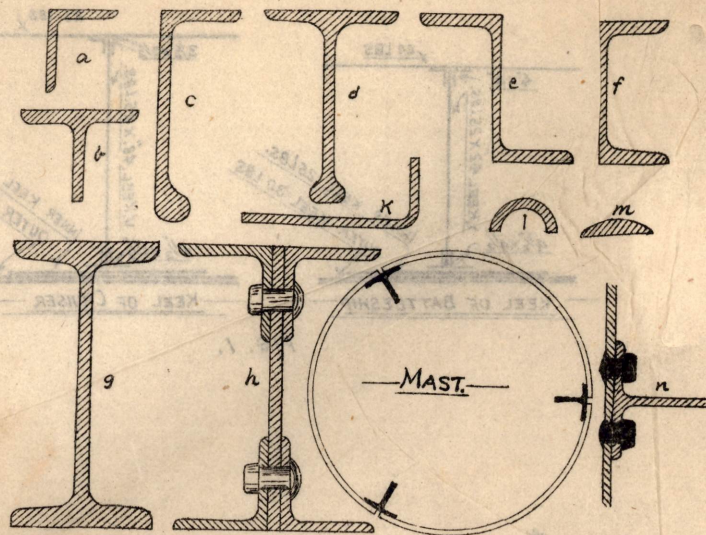


FIG. 4.

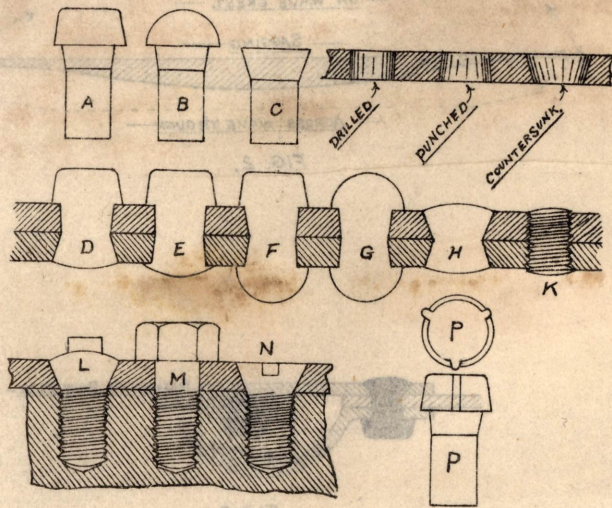


FIG. 5.

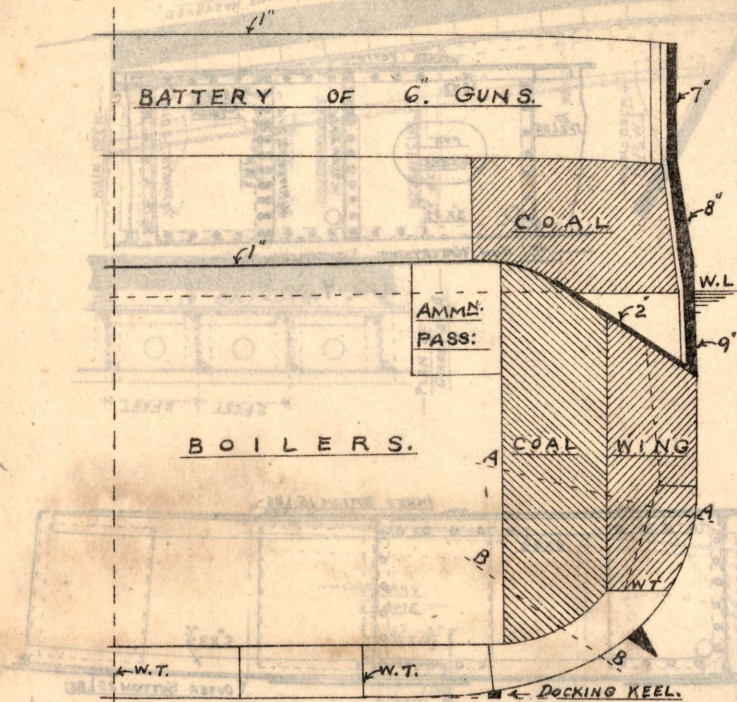


FIG. 6 - Section of H.M.S. King Edward VII.



FIG. 7. - Watertight Vertical Keel.

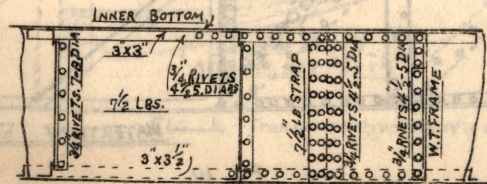


FIG. 8. - Watertight longitudinal.

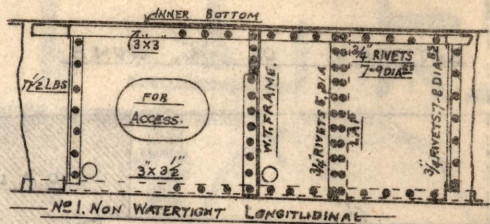


FIG. 9.

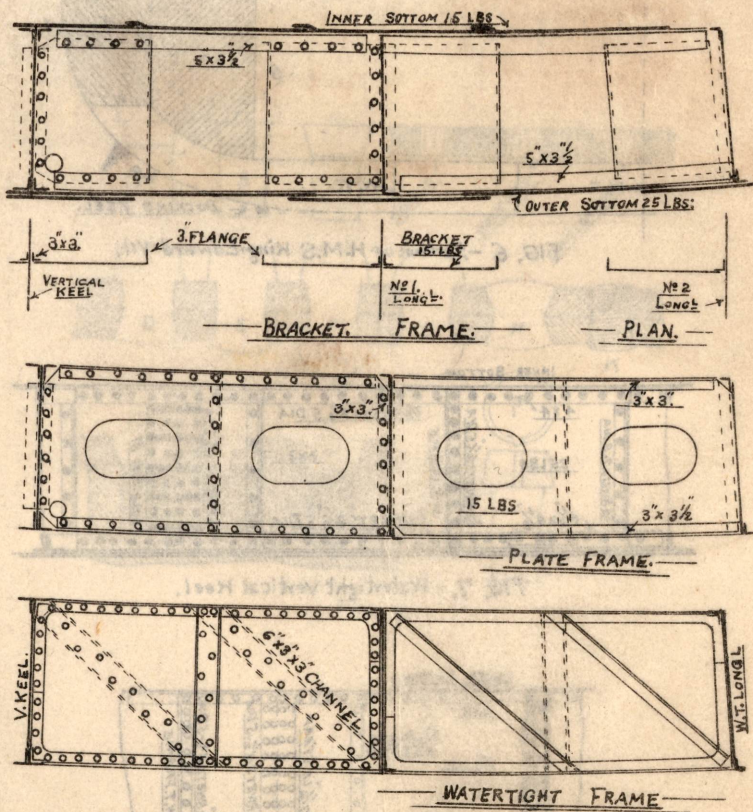


FIG. 10.

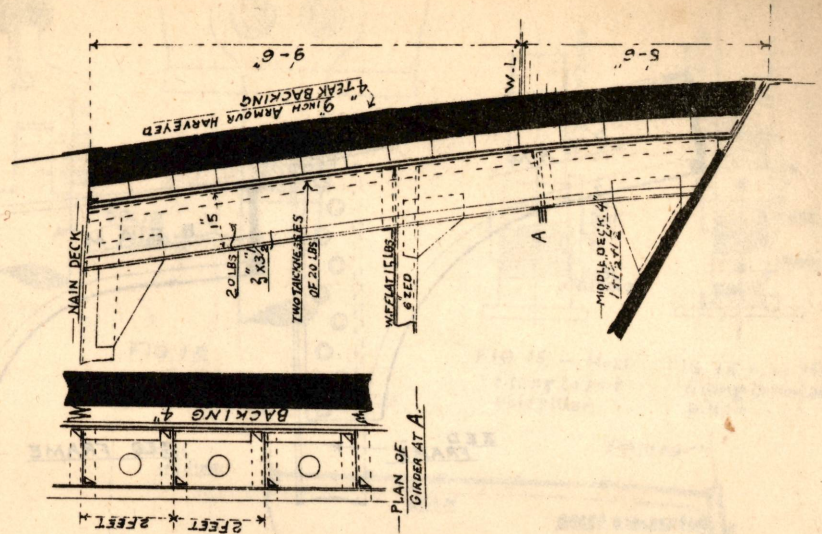


FIG. 11. - Support to 9-in. armour.

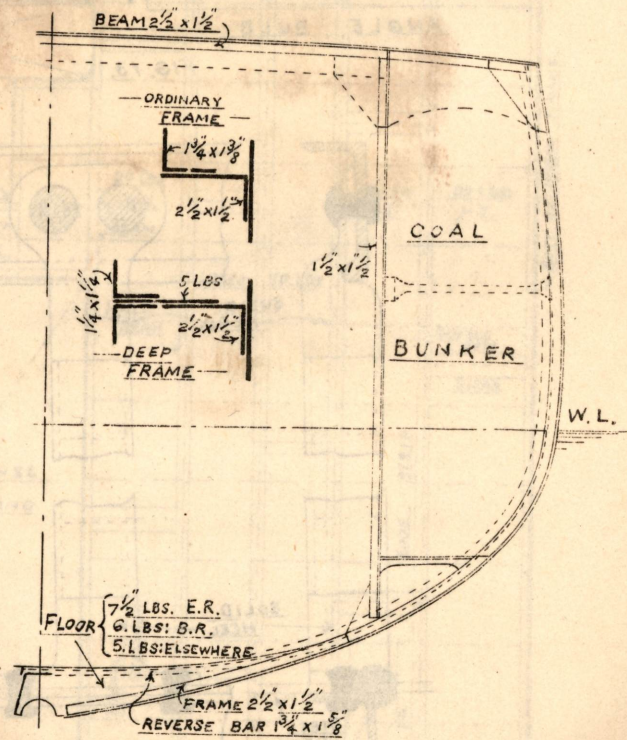


FIG. 12. - Transverse structure of a destroyer.

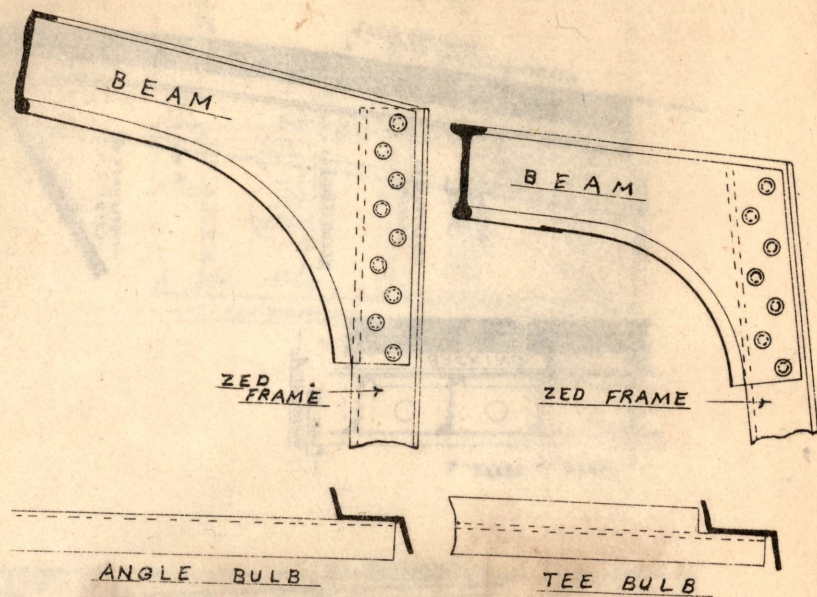


FIG. 13.

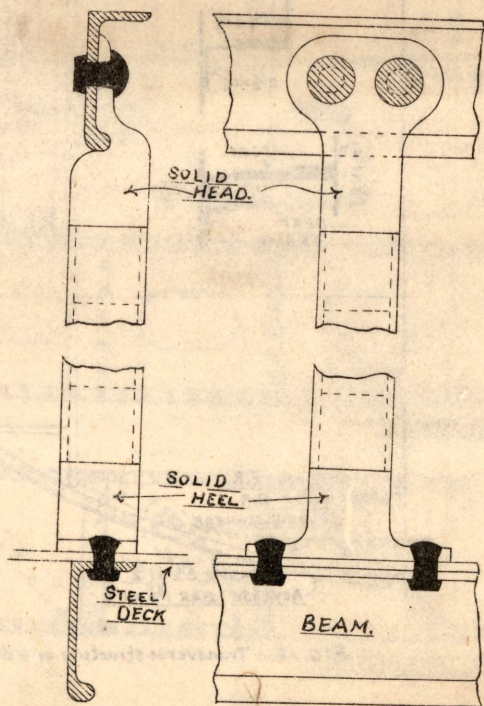


FIG. 14.

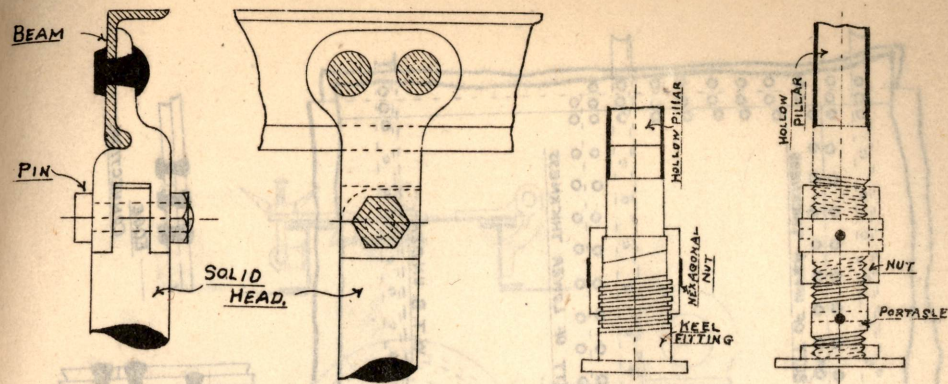


FIG. 15.

FIG. 16. - Heel fitting to portable pillar.

FIG. 16.A. - Heel fitting to portable pillar.

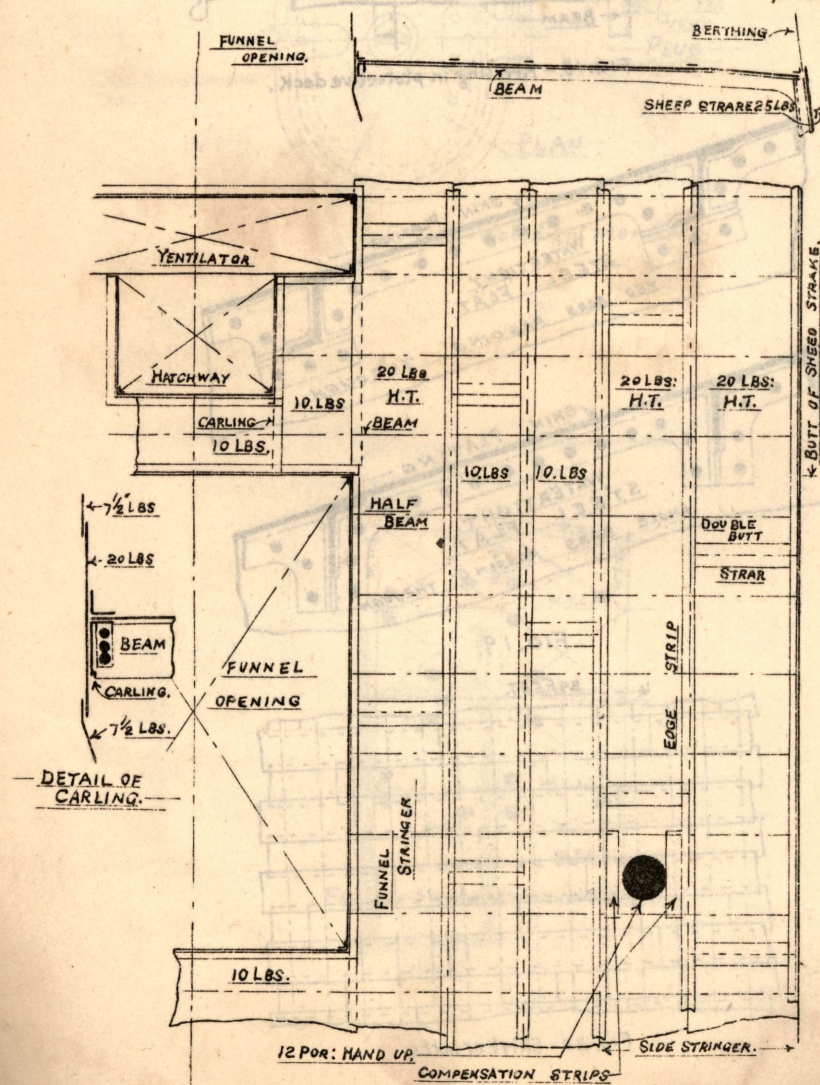


FIG. 17.

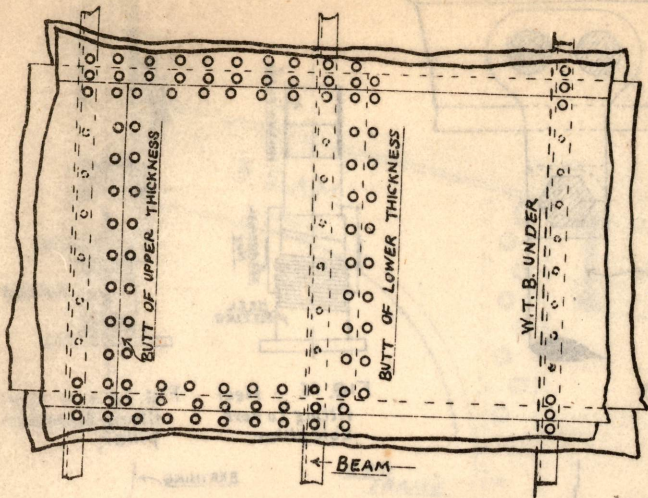


FIG. 18.- Riveting in protective deck.

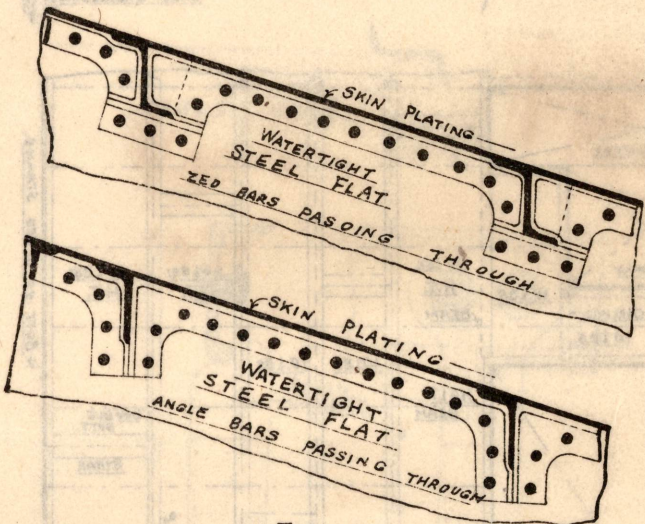
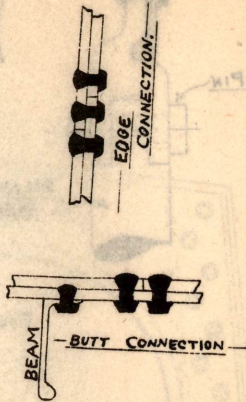


FIG. 19.

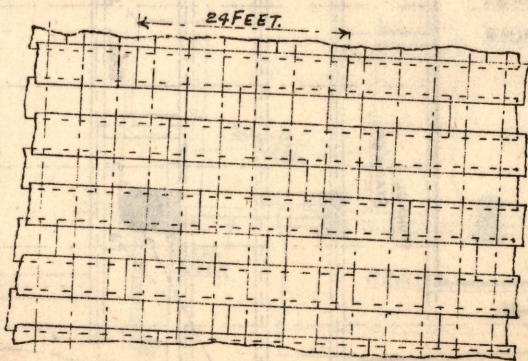


Fig. 20 - Shift of butts.

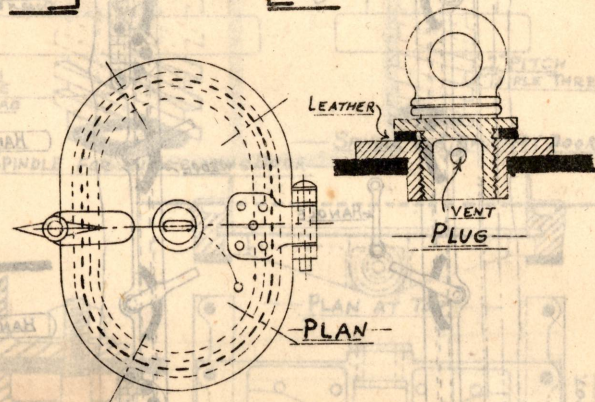


FIG. 21.- Watertight manhole.

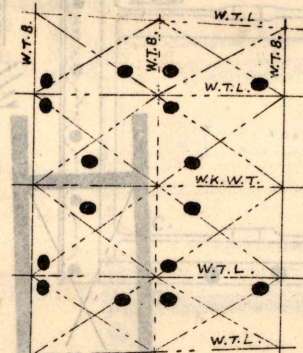


FIG. 22.- Manholes in inner bottom.

Fig. 25 - Vertical sliding watertight door

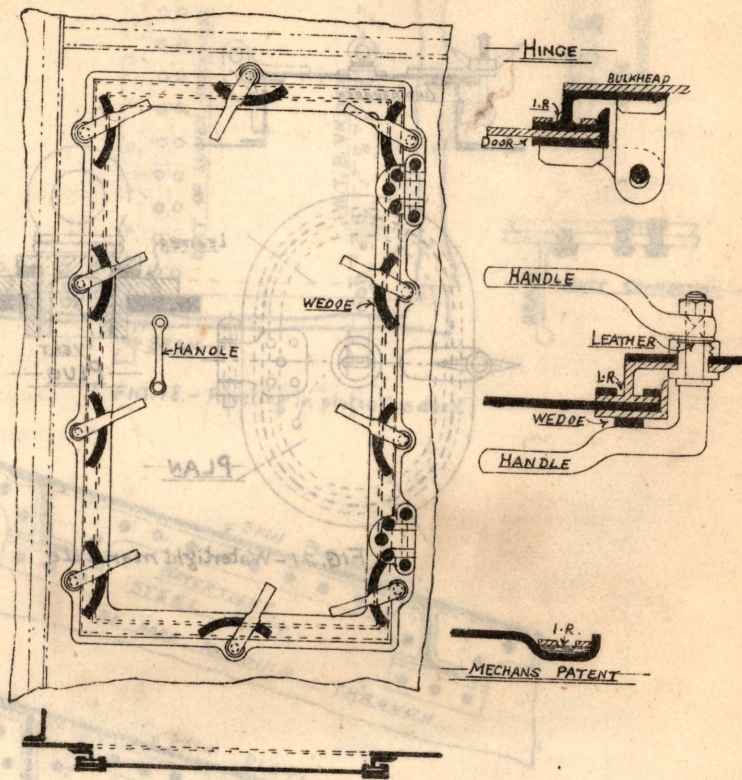


FIG. 23. - Hinged watertight door.

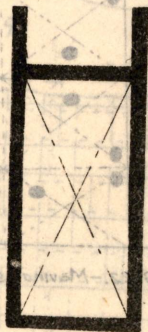


FIG. 24.

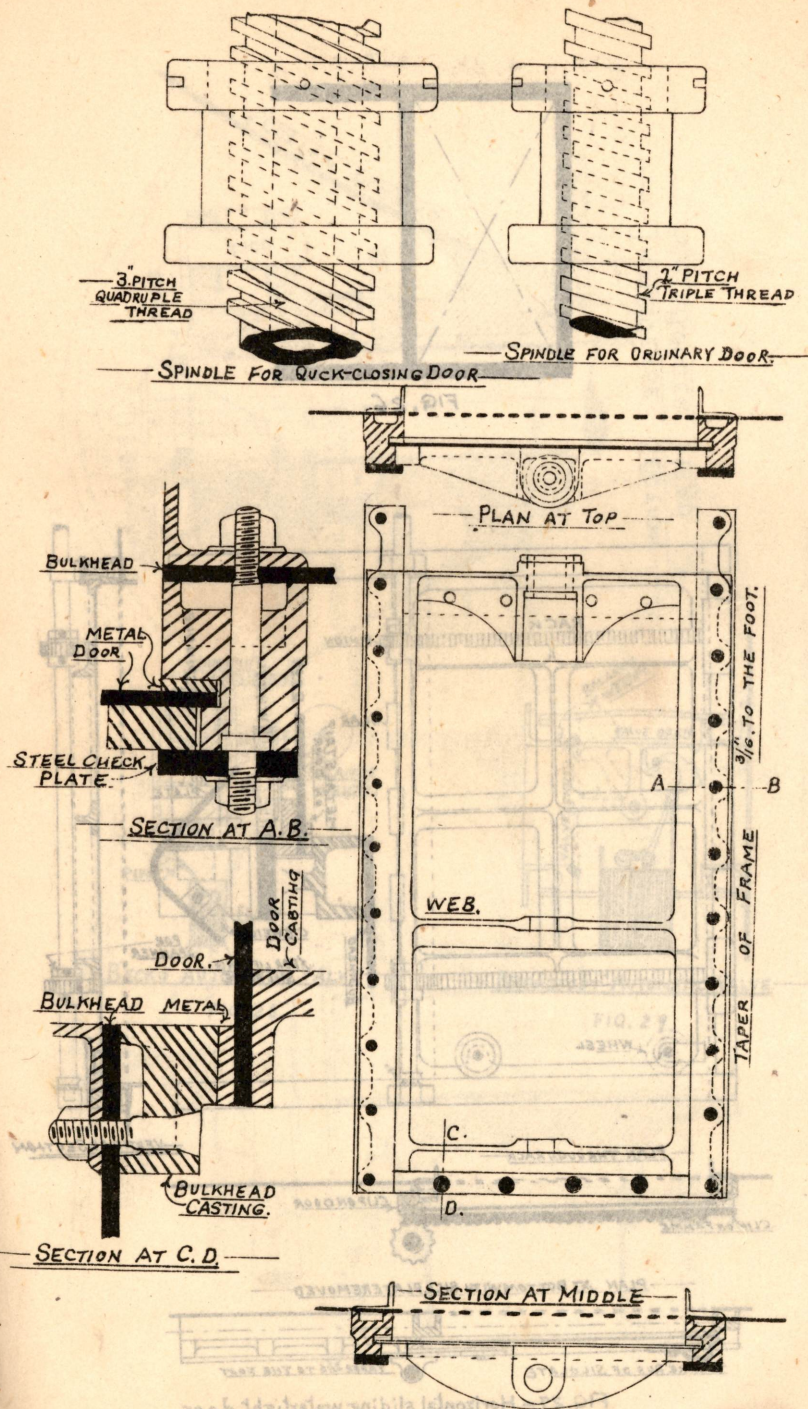


FIG. 25. - Vertical sliding watertight Door.

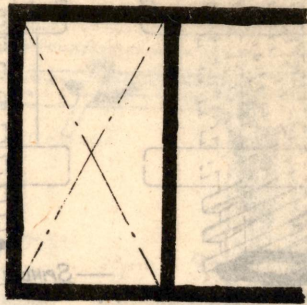


FIG. 26.

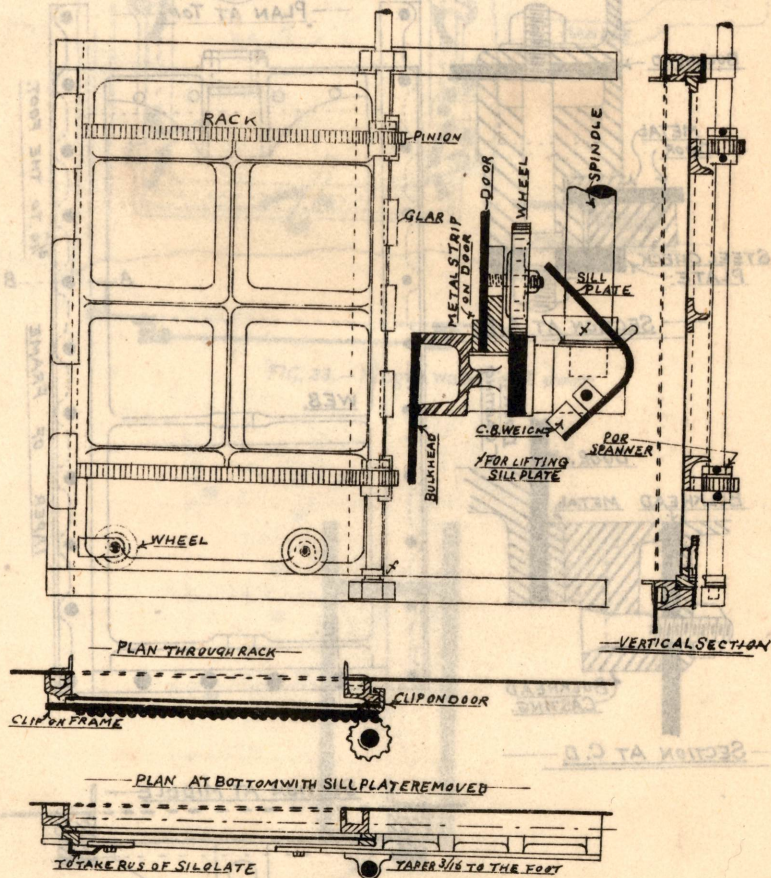


FIG. 27.—Horizontal sliding watertight door.

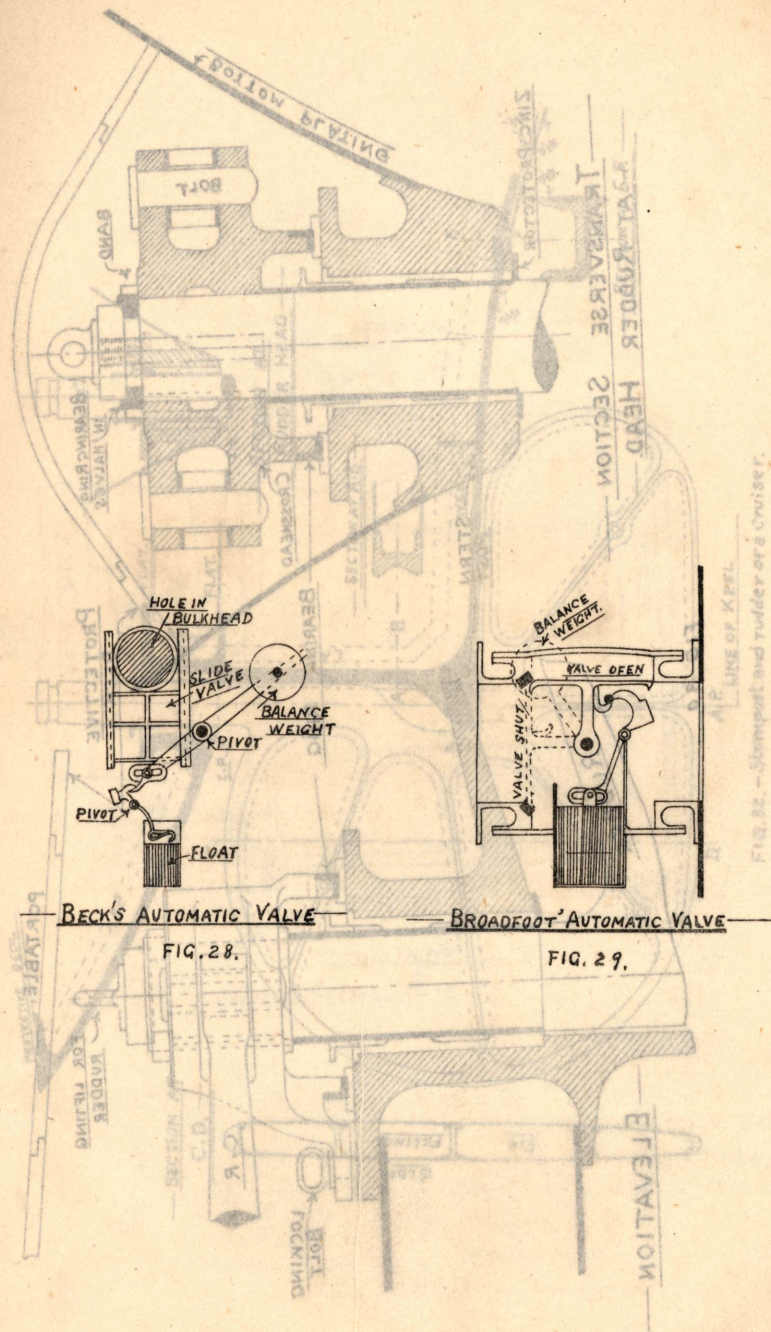


FIG. 28.

FIG. 29.

Fig. 22.—Stompost and rudder of a cruiser.

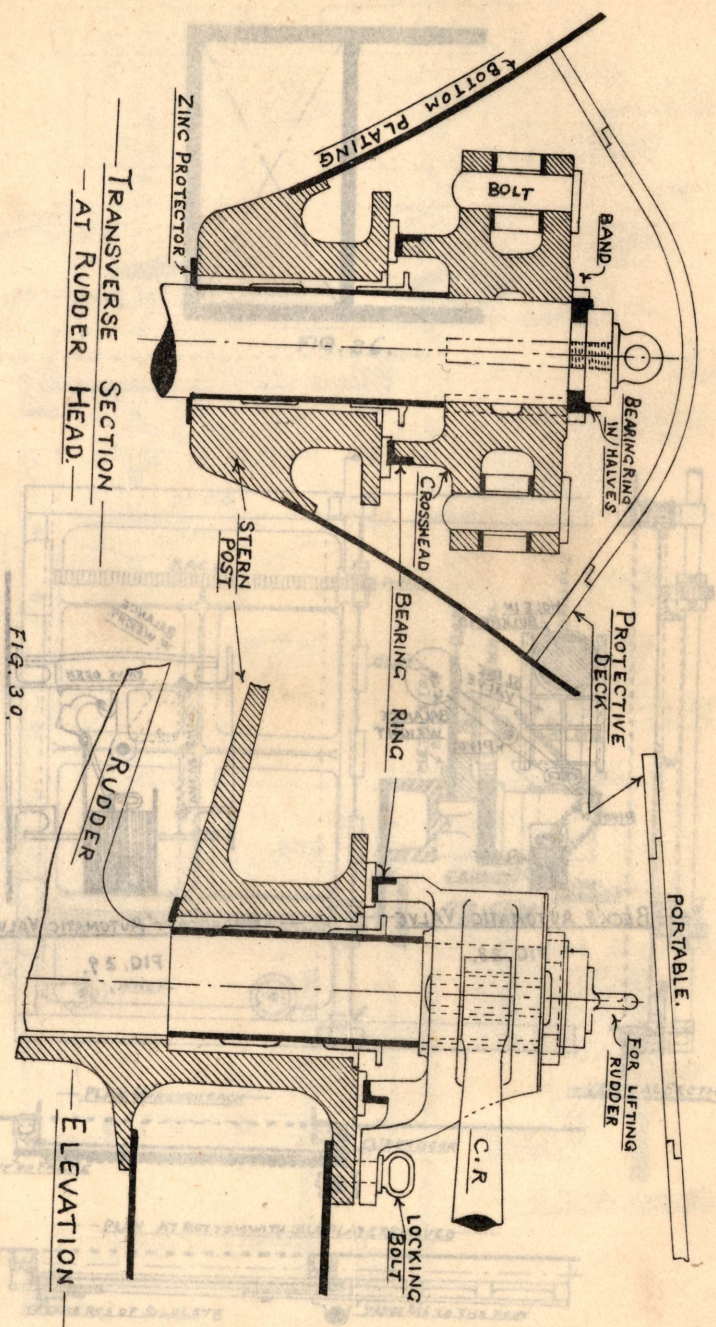


FIG. 30

FIG. 27 - Horizontal sliding watertight door

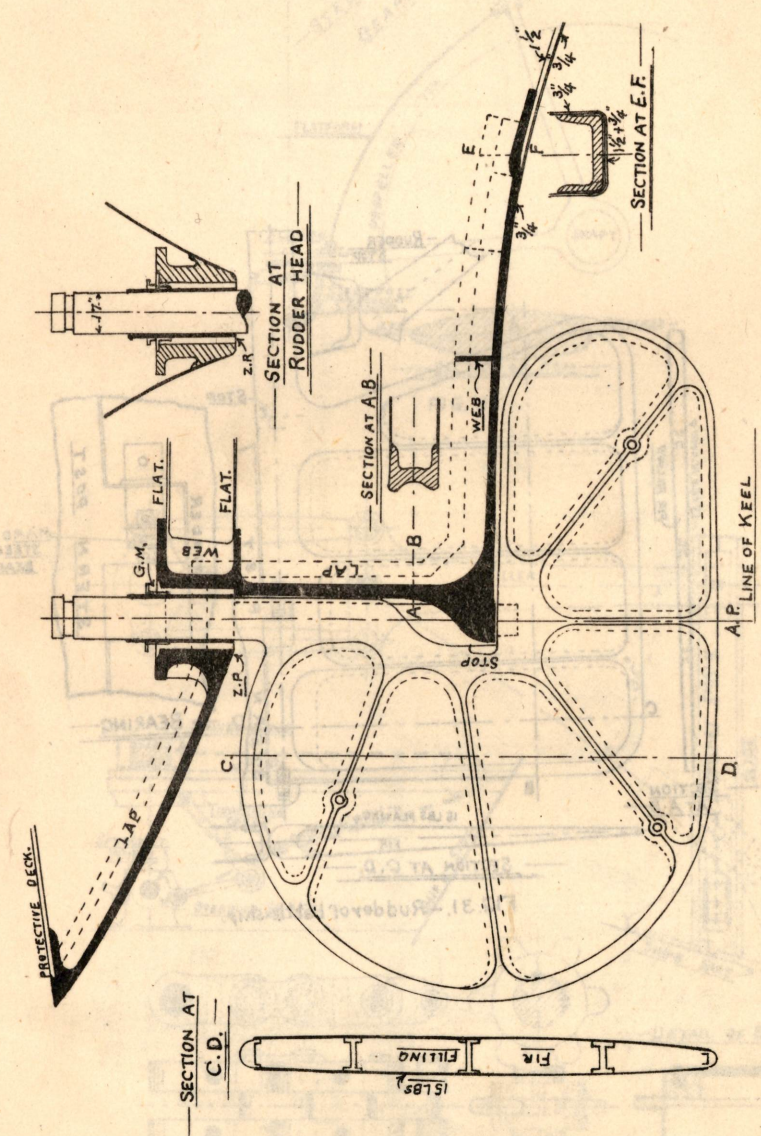


FIG. 32. - Stempost and rudder of a cruiser.

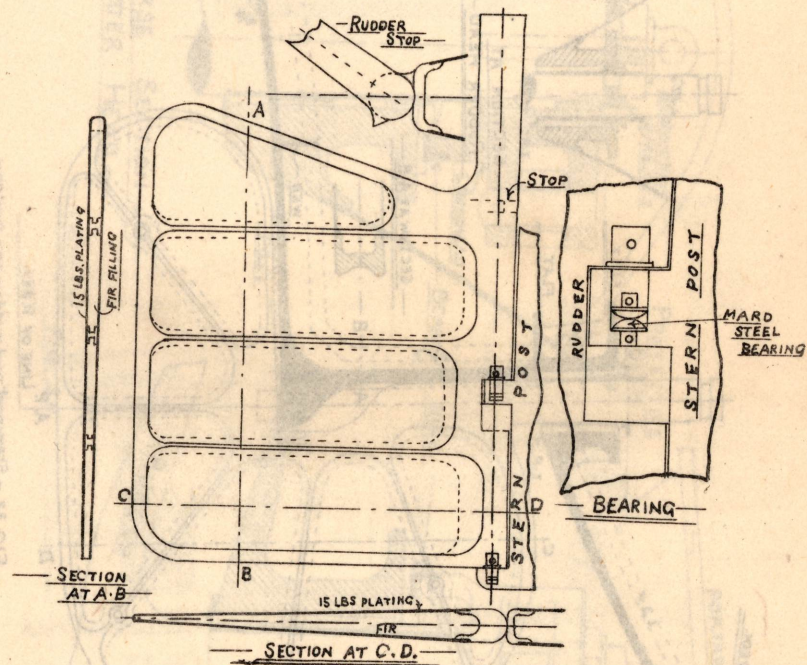


FIG. 31. - Rudder of battle-ship.

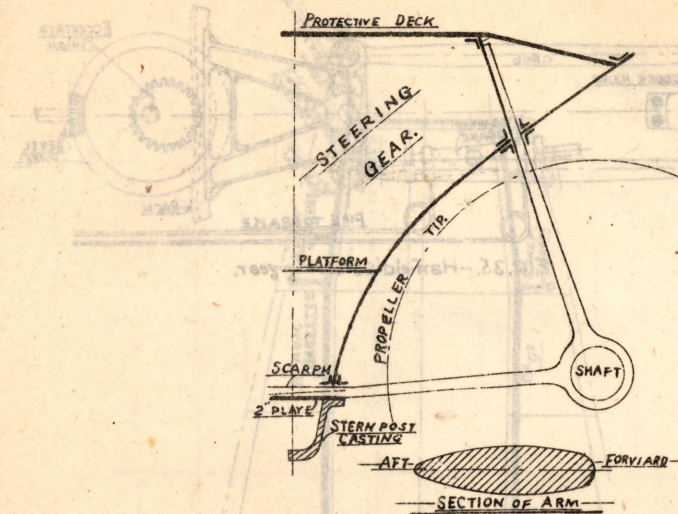


FIG. 33.

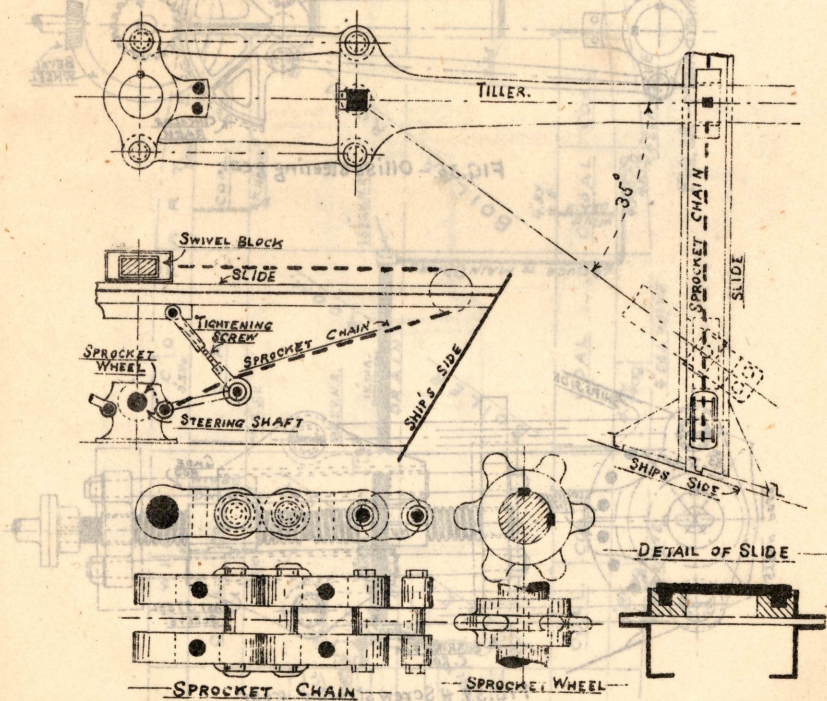


FIG. 34. - Rapson's slide steering gear.

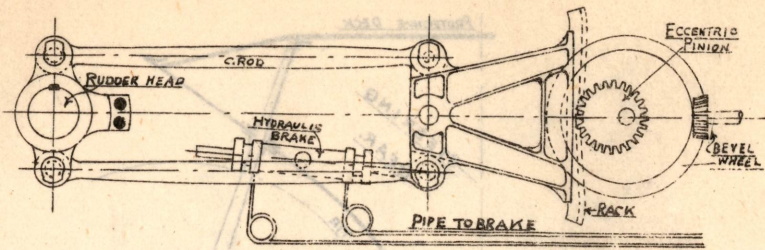


FIG. 35. - Harfield's steering gear.

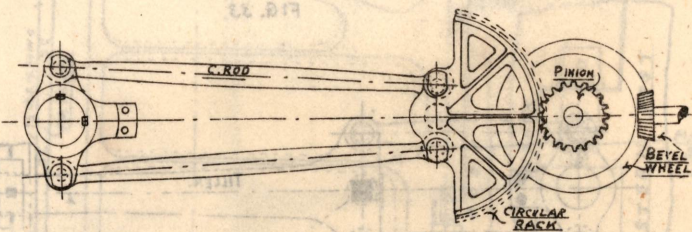


FIG. 36. - Olliss steering gear.

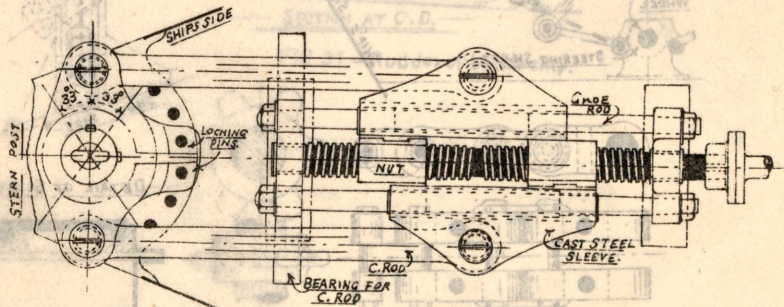


FIG. 37. - Screw steering gear.

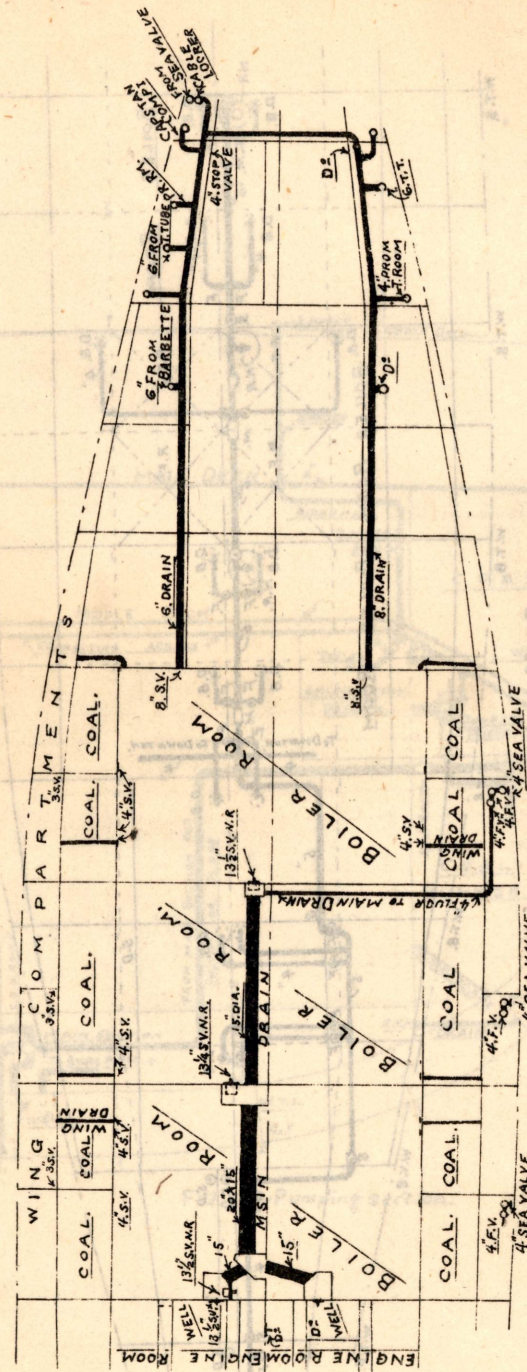


Fig. 38. - Main drain, etc.

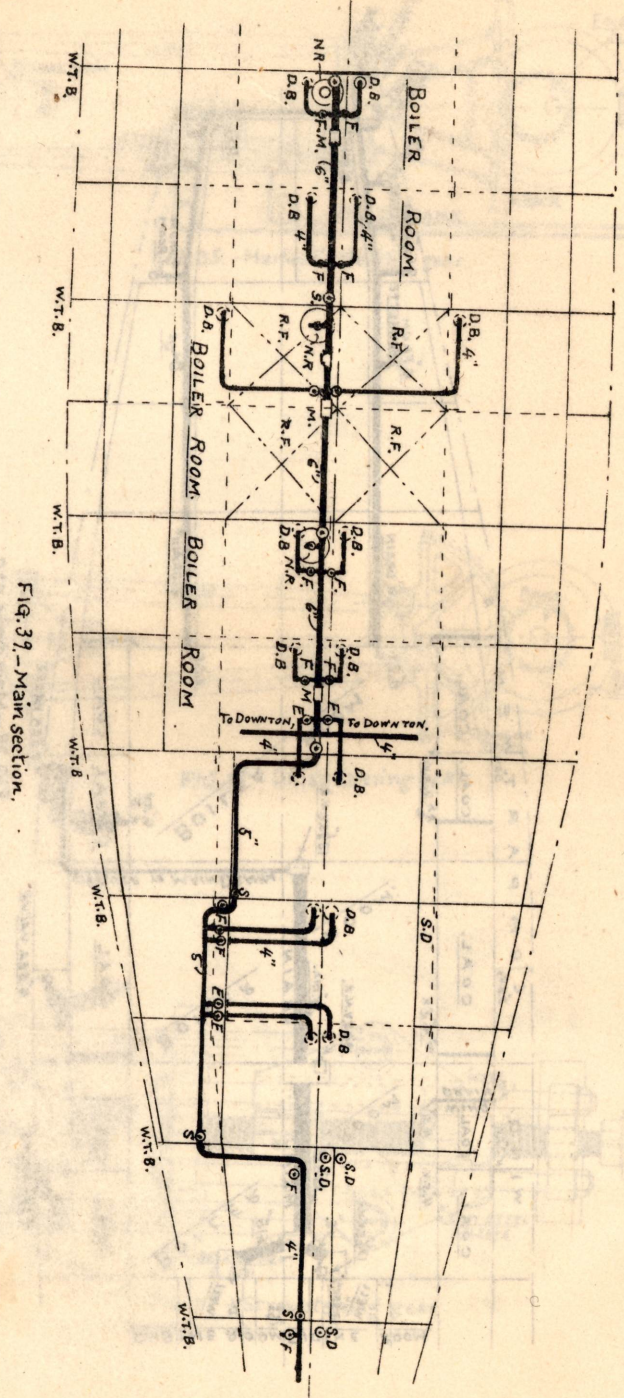


Fig. 39.-Main section.

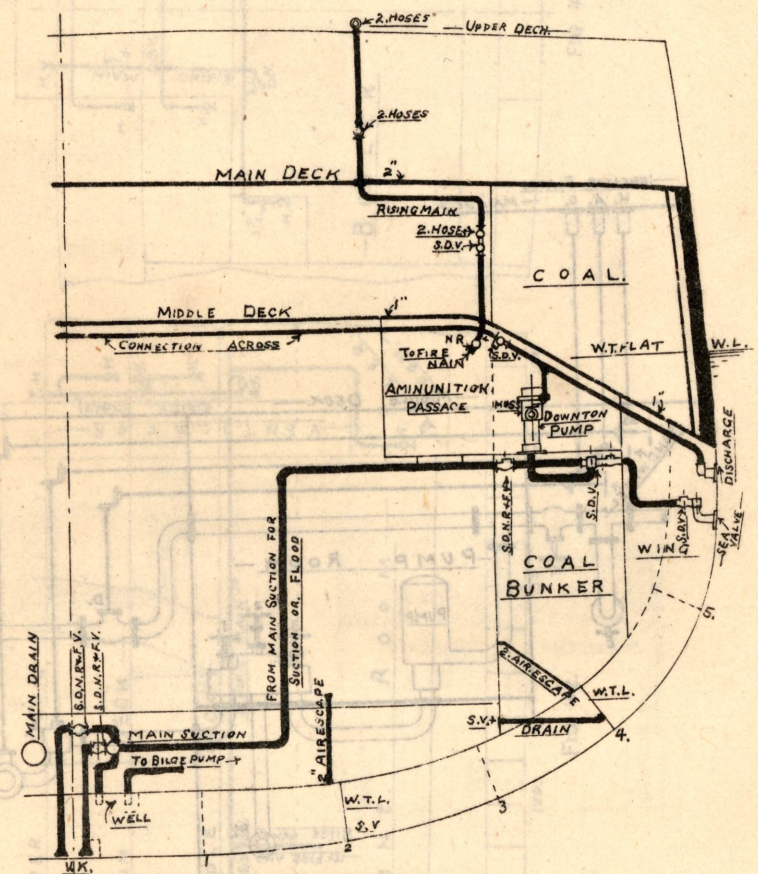


FIG. 40.-Pumping section.

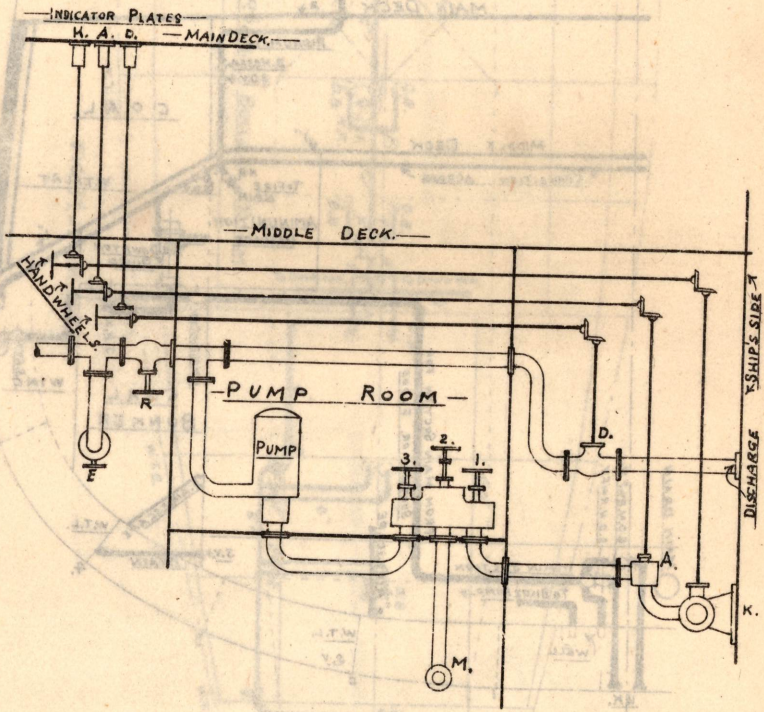


FIG. 41.

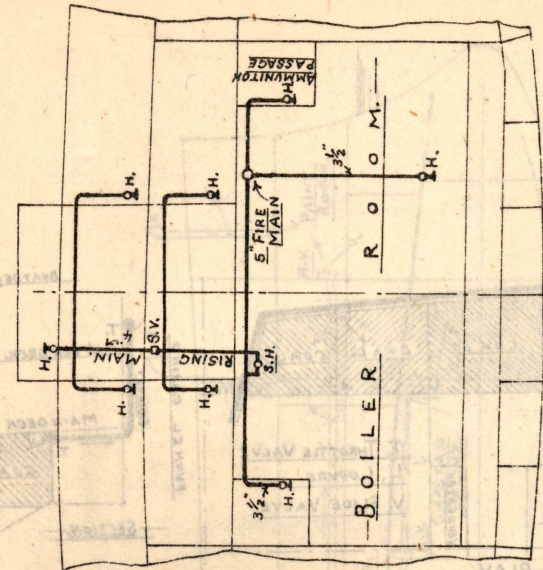


FIG. 43.

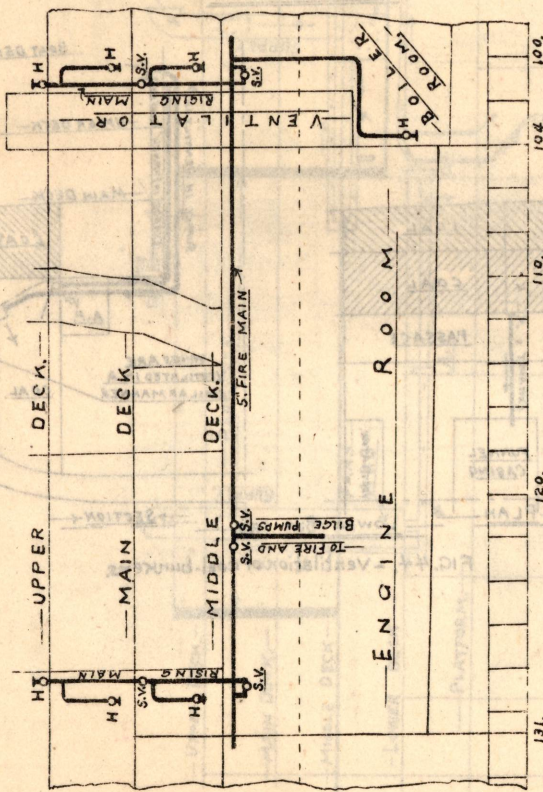


FIG. 42.

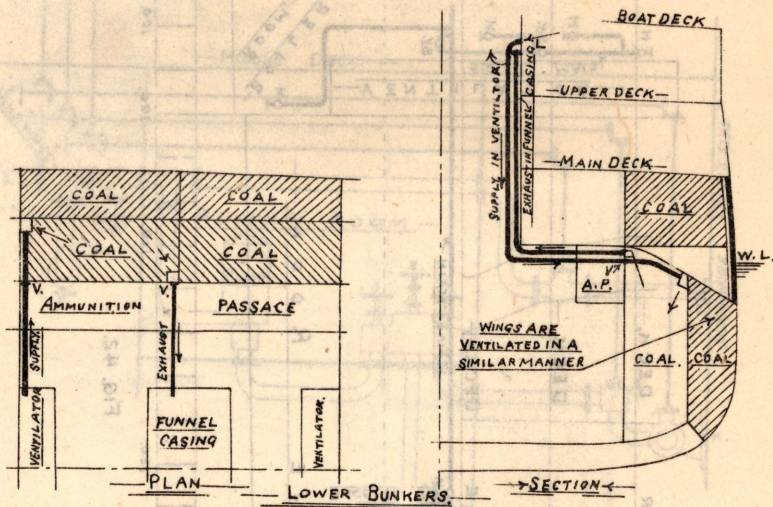
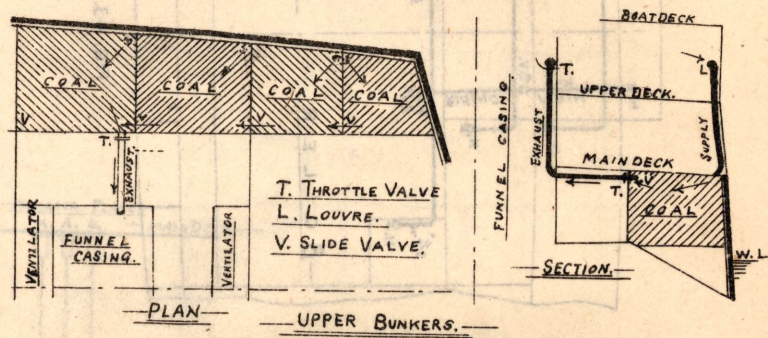


FIG. 44. - Ventilation of coal-bunkers.

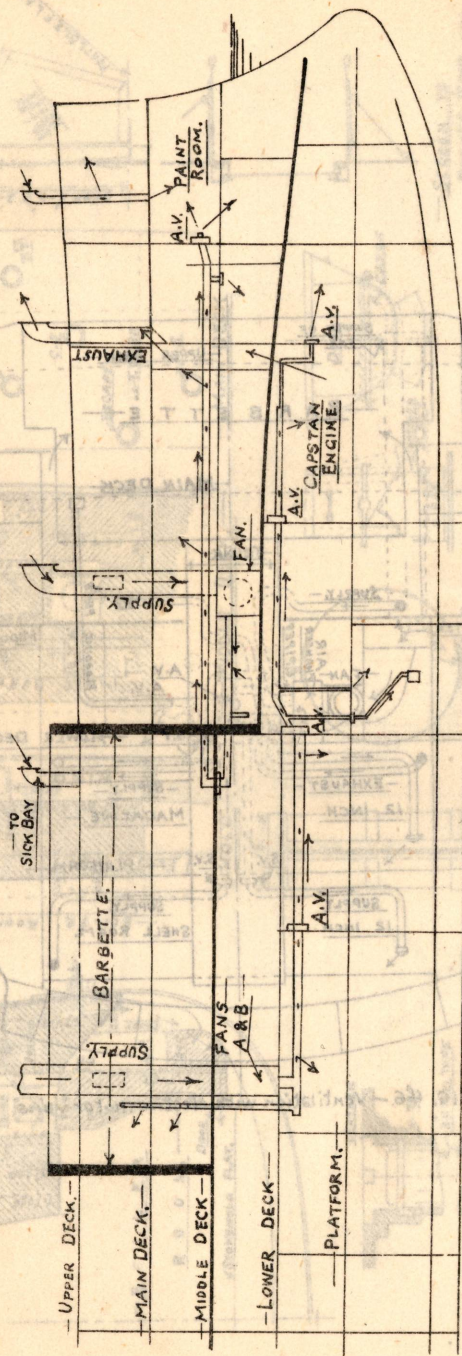


FIG. 45. - Ventilation with steam fans.

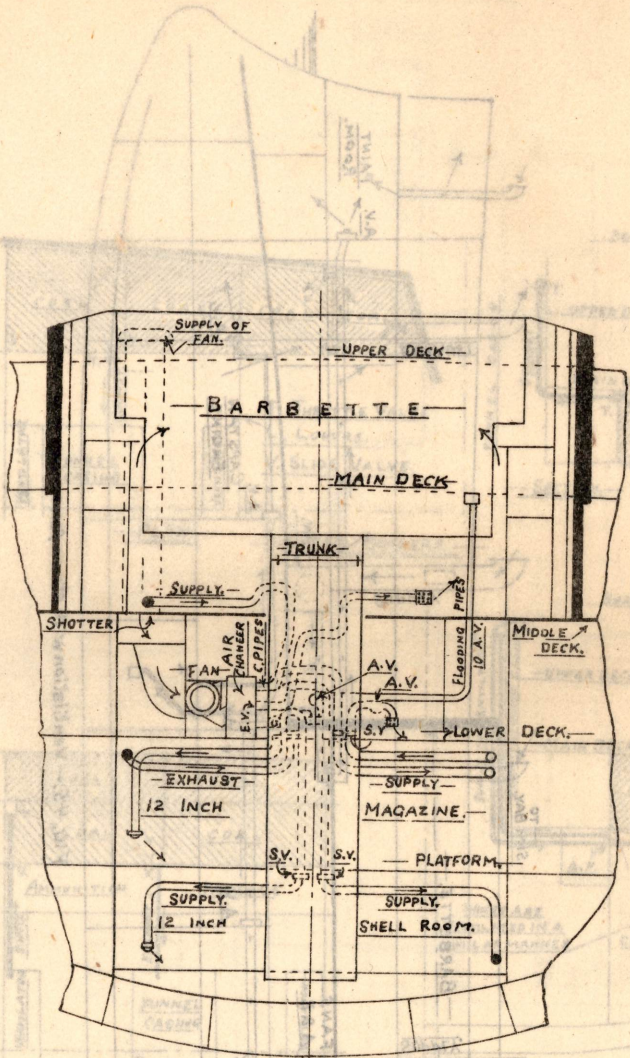


FIG. 46.—Ventilation with electric motor fans.

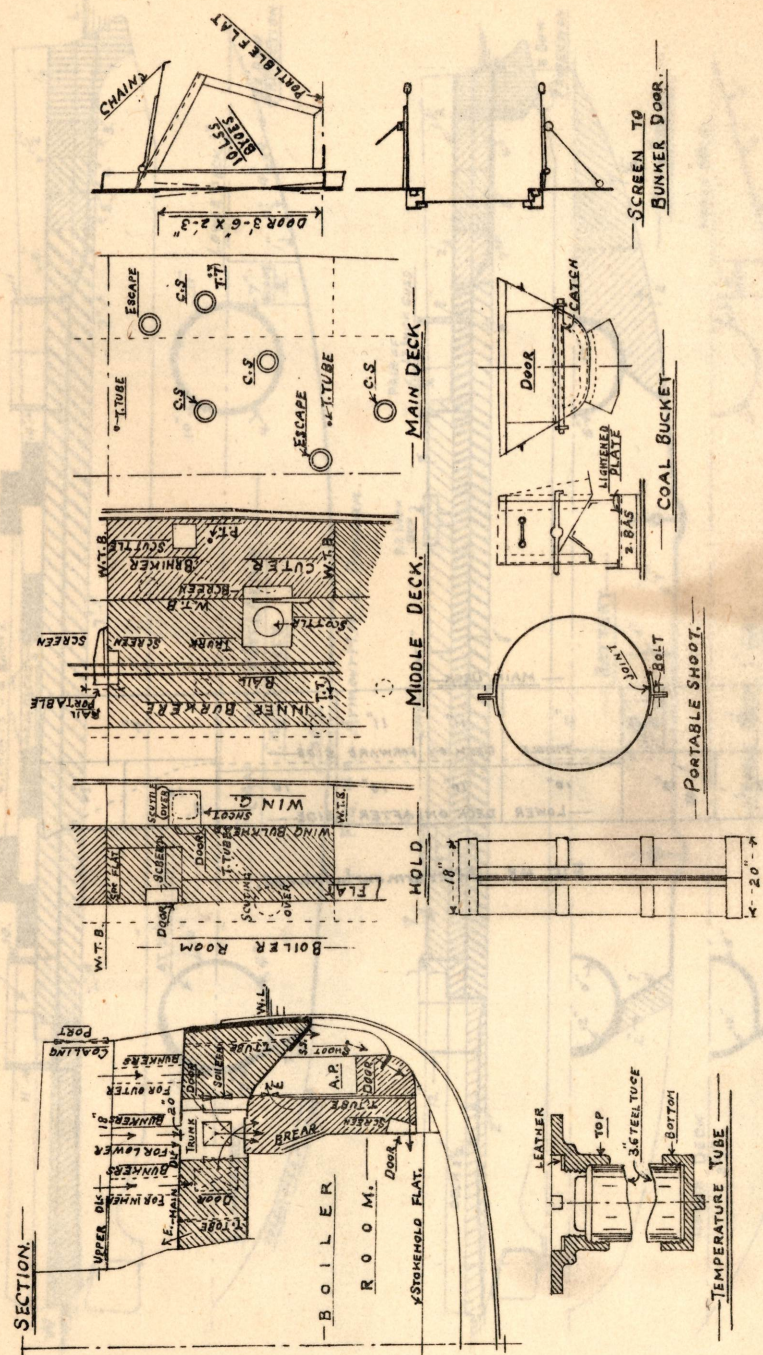


FIG. 47.—Cooling arrangements.

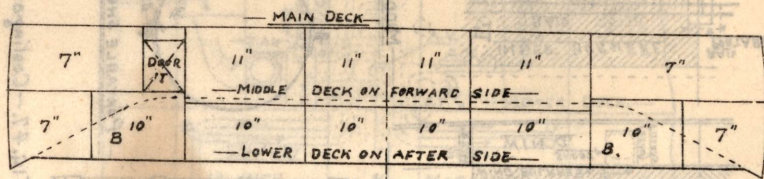


FIG. 48. — After-armor bulkhead.

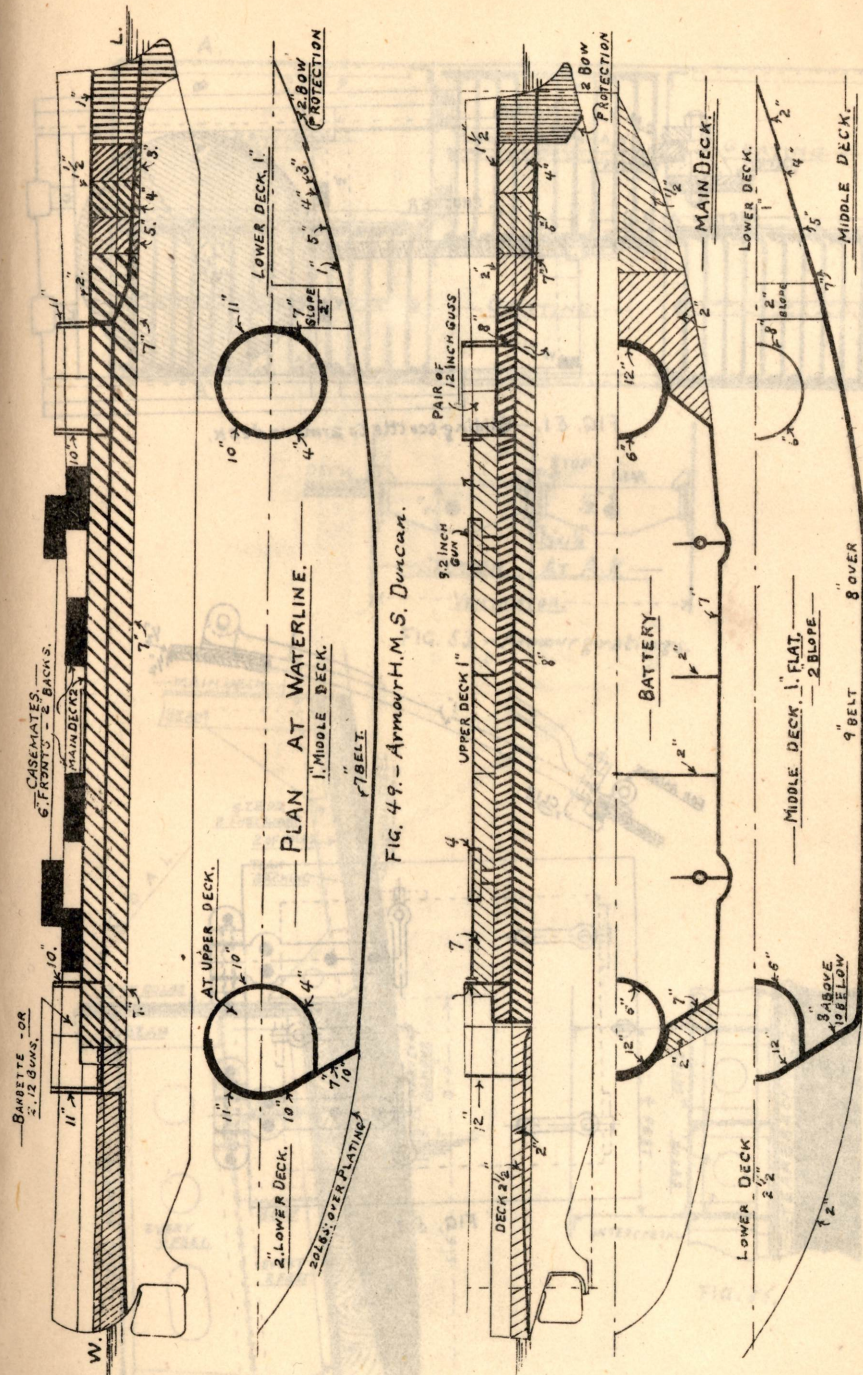


Fig. 50. — Armour protection, etc, H.M.S. King Edward VII.

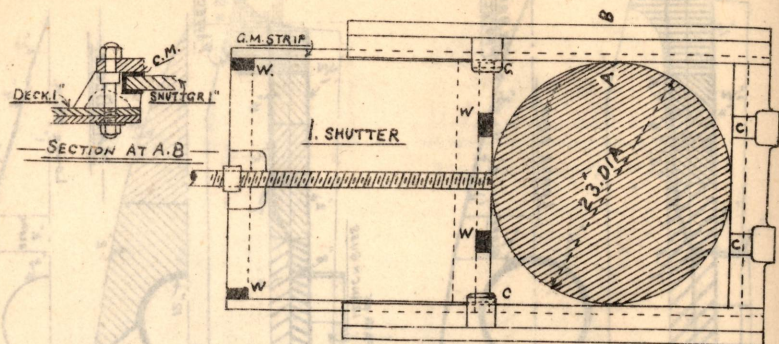


FIG. 51. - Sliding scuttle to armour deck.

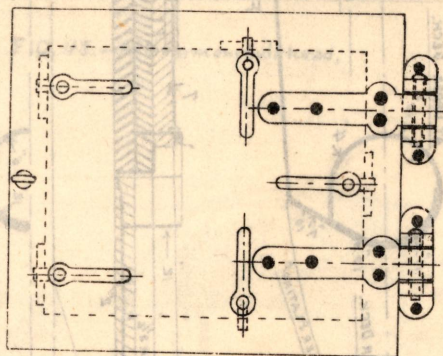
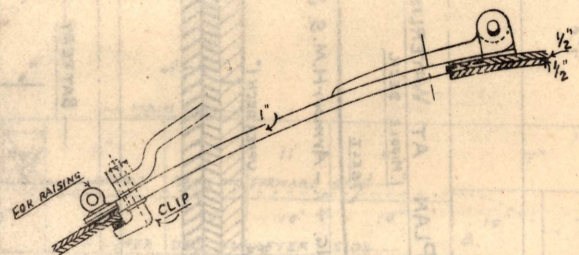


FIG. 52.

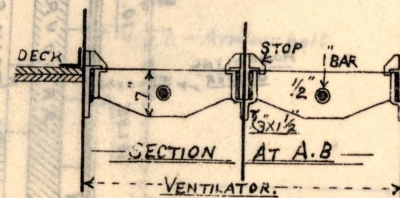
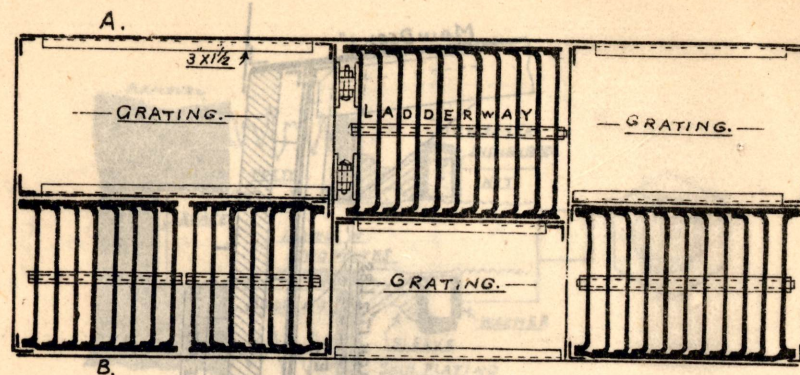


FIG. 53. - Armour gratings.

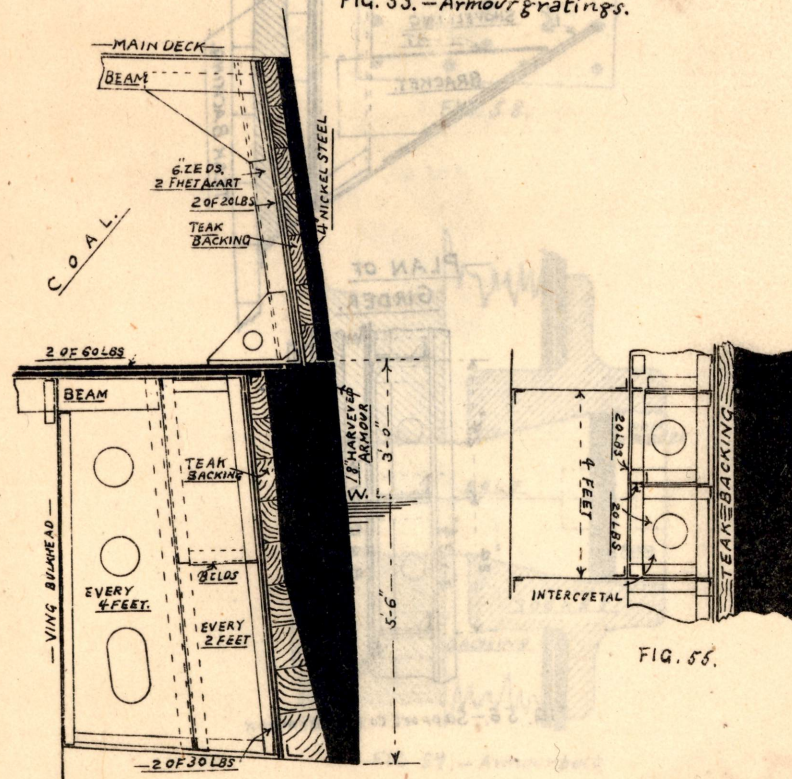


FIG. 54.

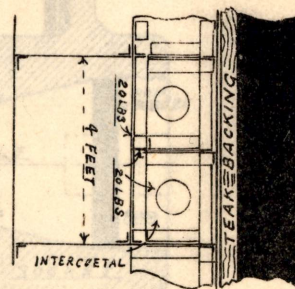


FIG. 55.

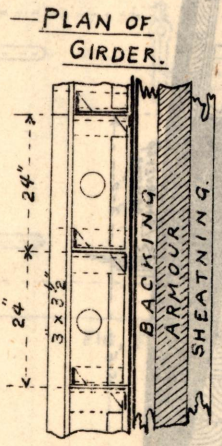
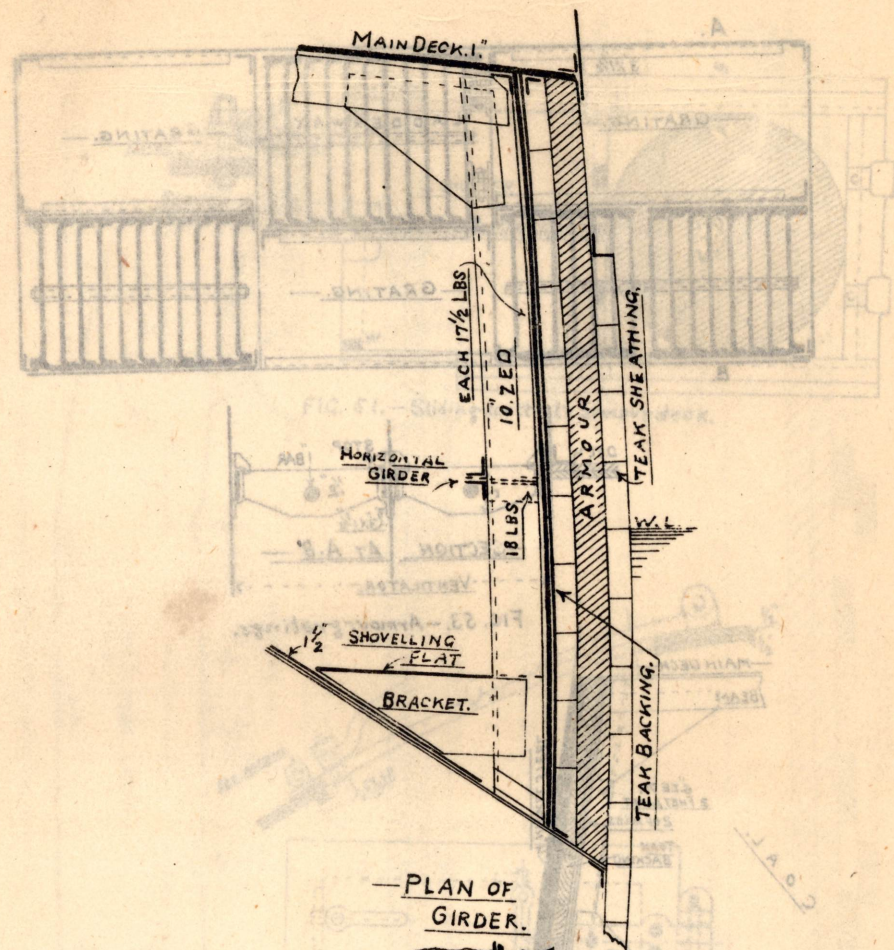


FIG. 56.—Support to 6-in. armour.

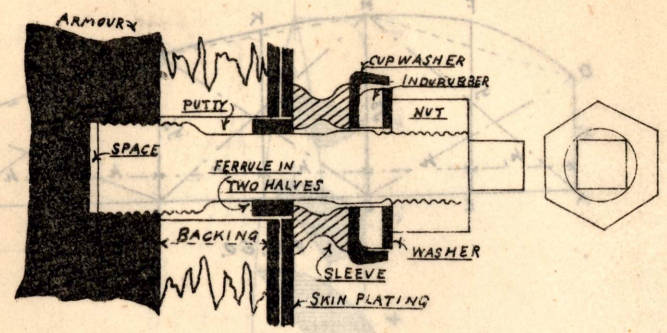


FIG. 57.— Armour bolt.

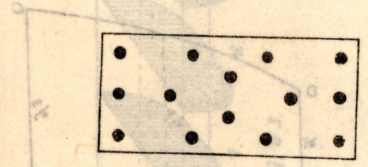


FIG. 58.

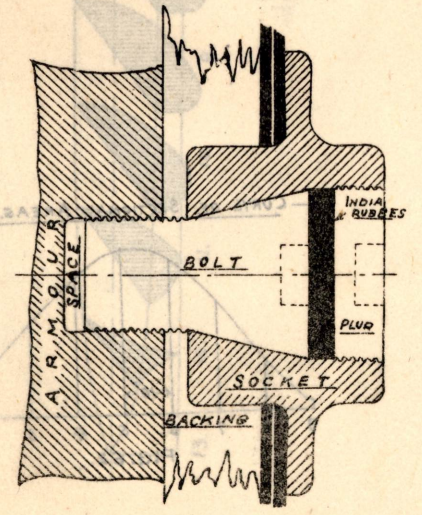


FIG. 59.— Armour bolt.

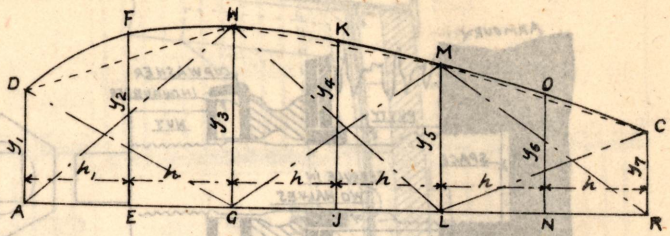


FIG. 60.

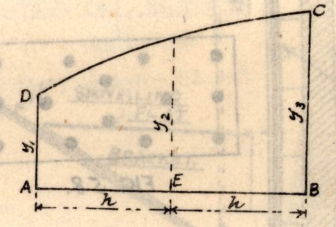


FIG. 61.

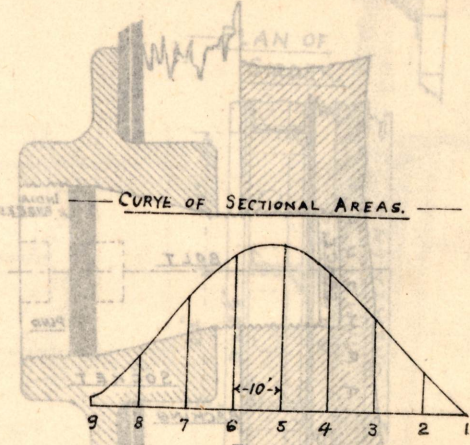


FIG. 62.

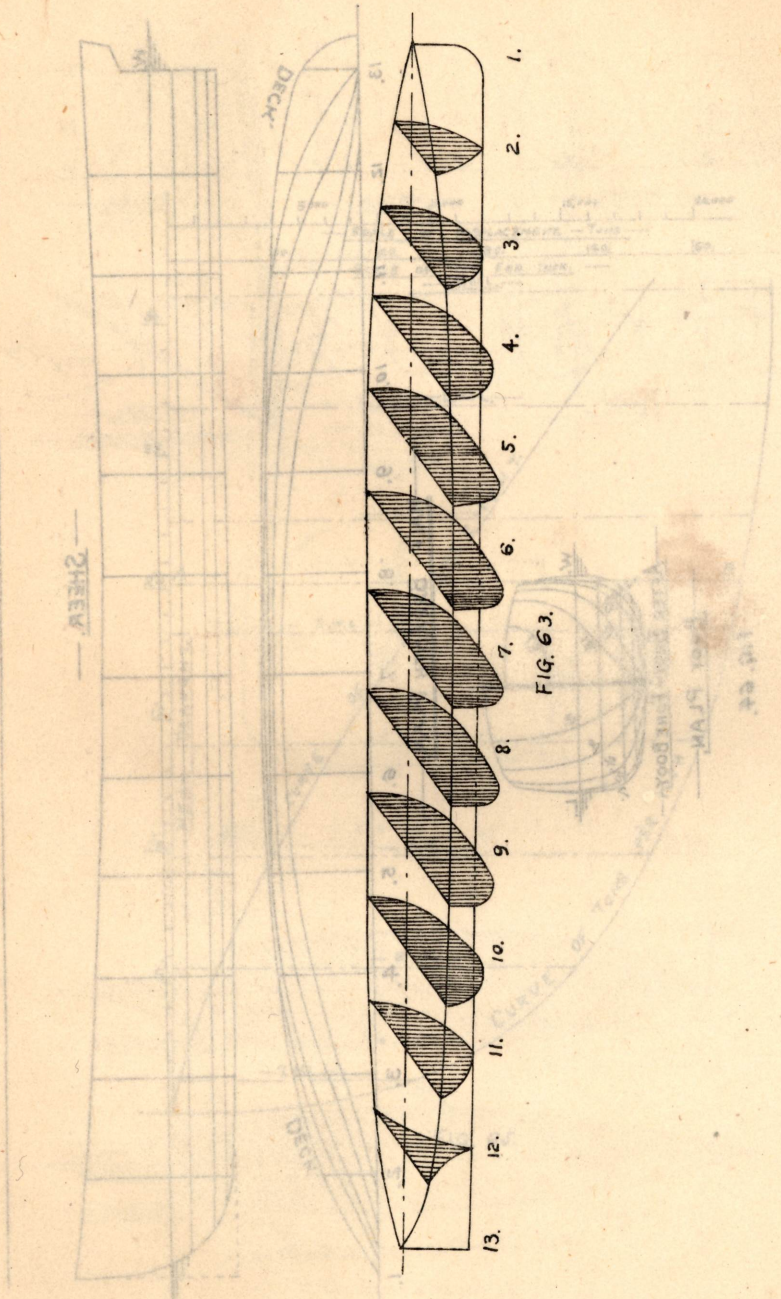


FIG. 63.

FIG. 64.

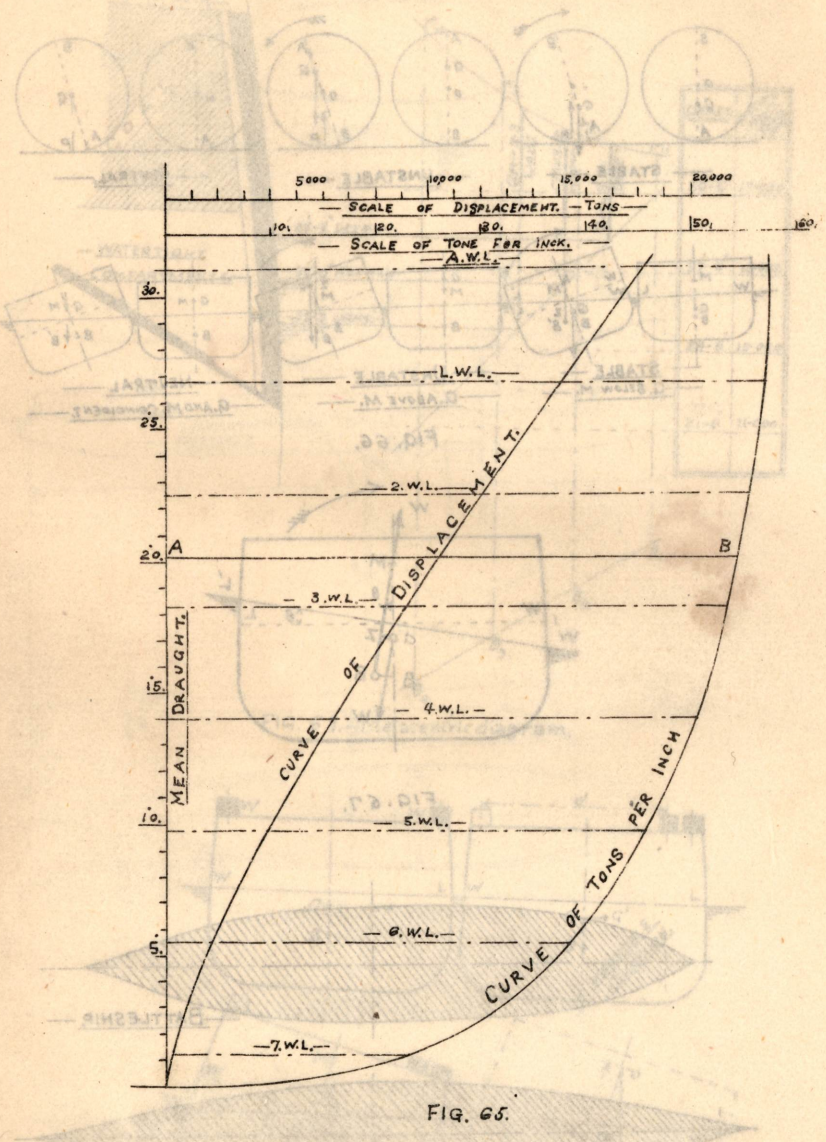
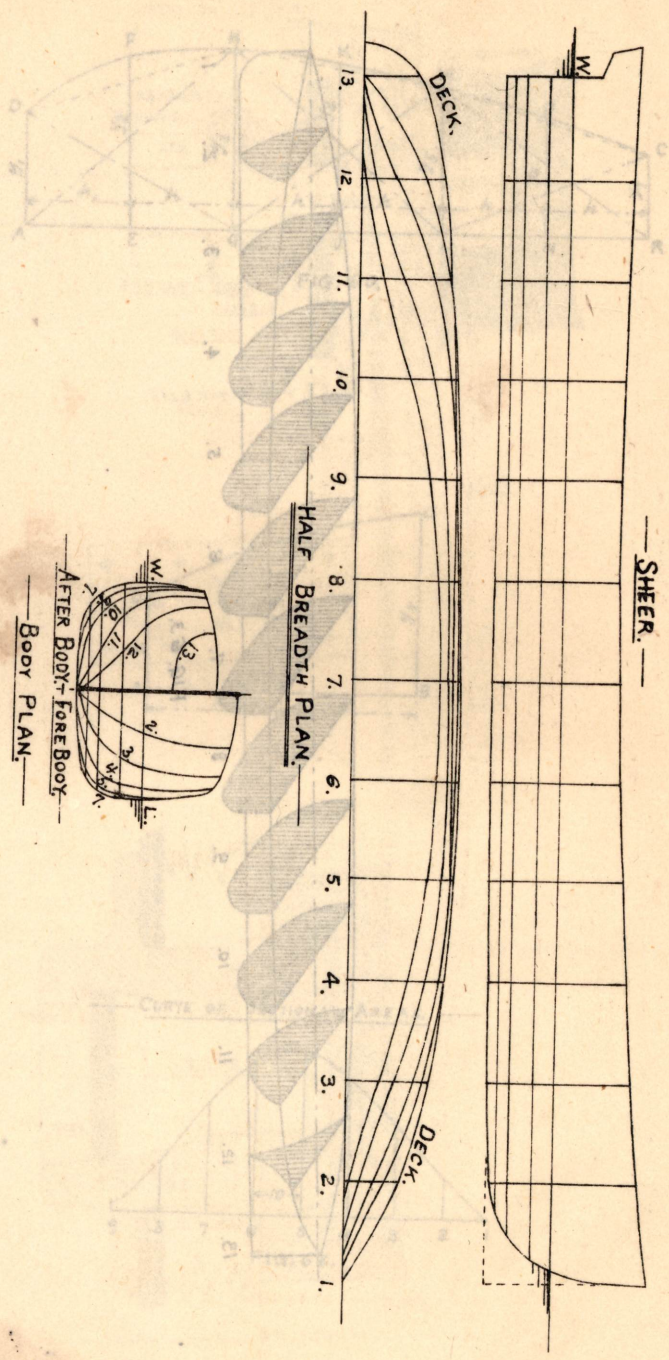


FIG. 65.

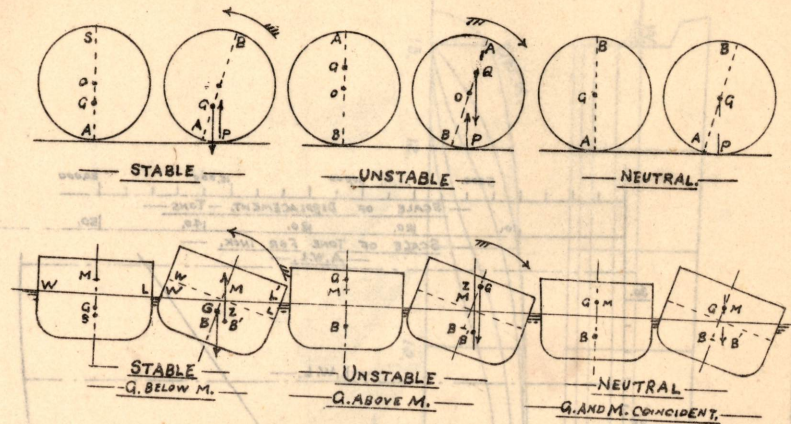


FIG. 66.

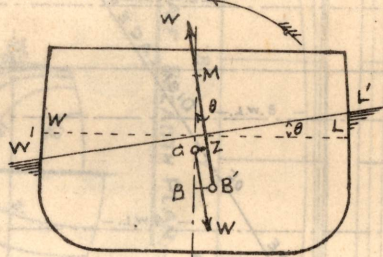


FIG. 67.

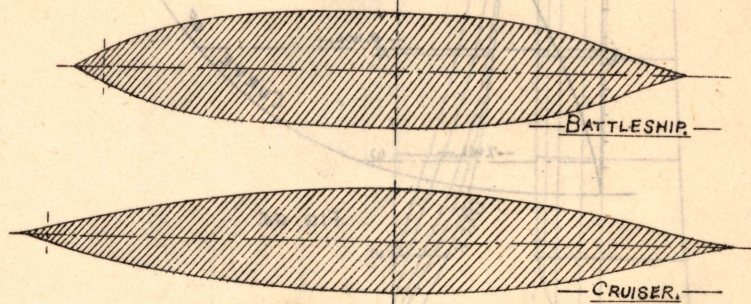


FIG. 68. - Shapes of load waterplane.

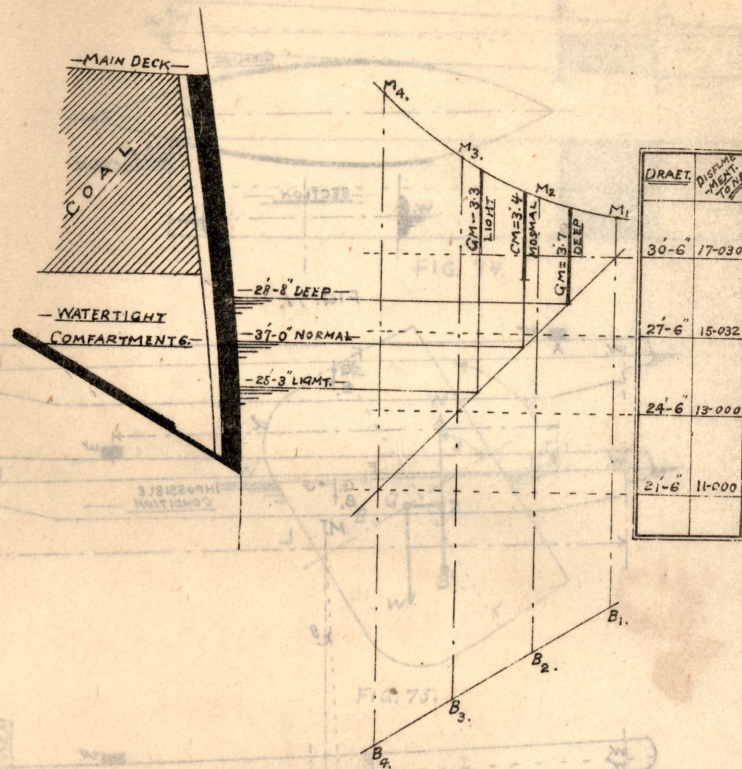


FIG. 69. - Metacentric diagram.

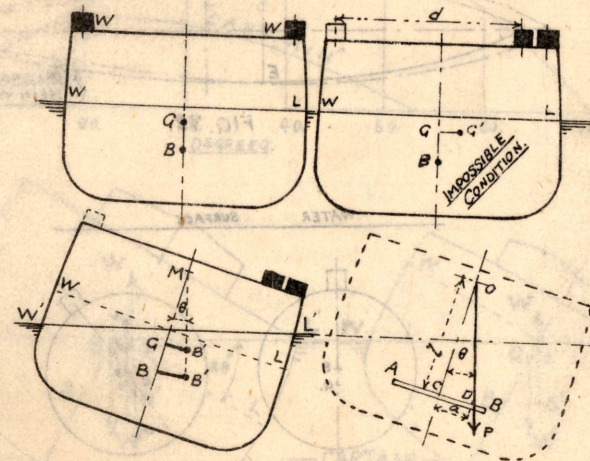


FIG. 70. - Inclining experiment.

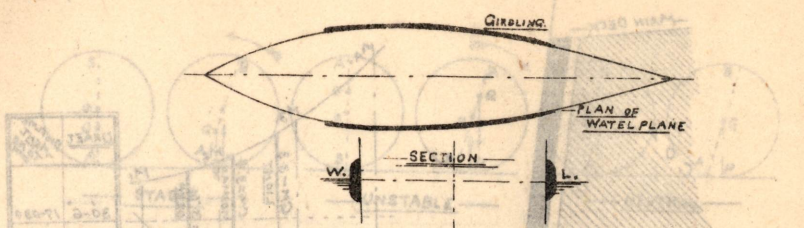


FIG. 71.

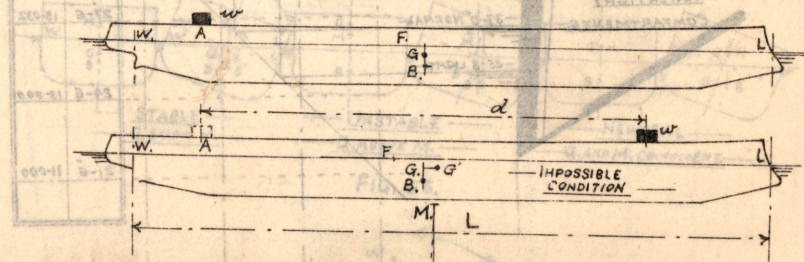


FIG. 72.

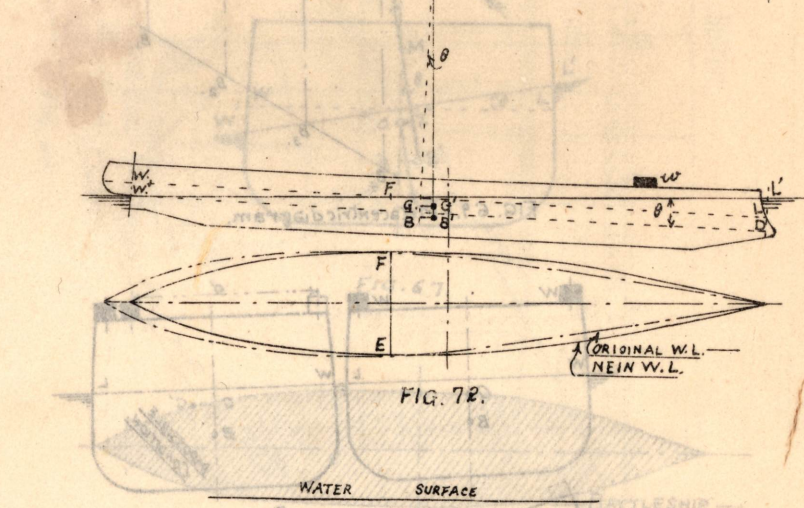


FIG. 73. - Stability of a submarine.

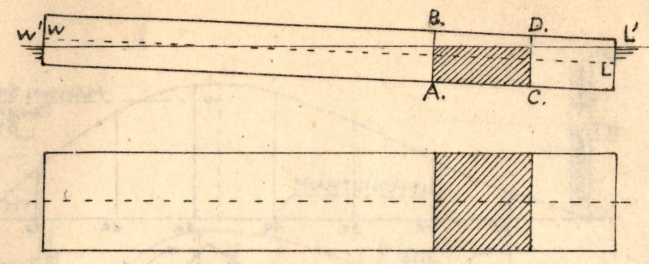


FIG. 74.

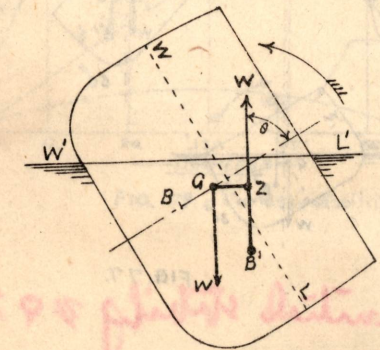


FIG. 75.

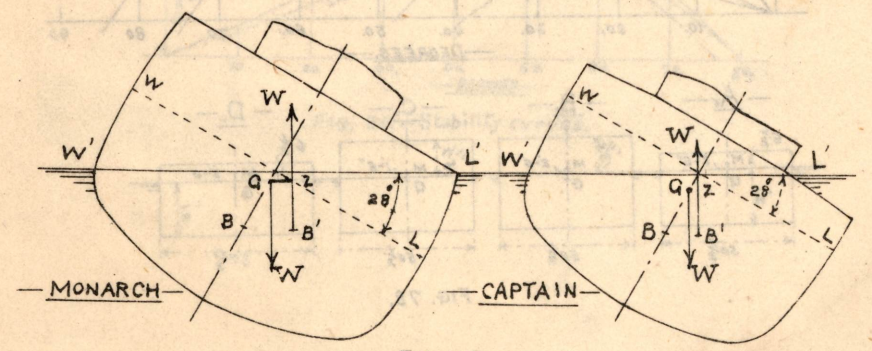
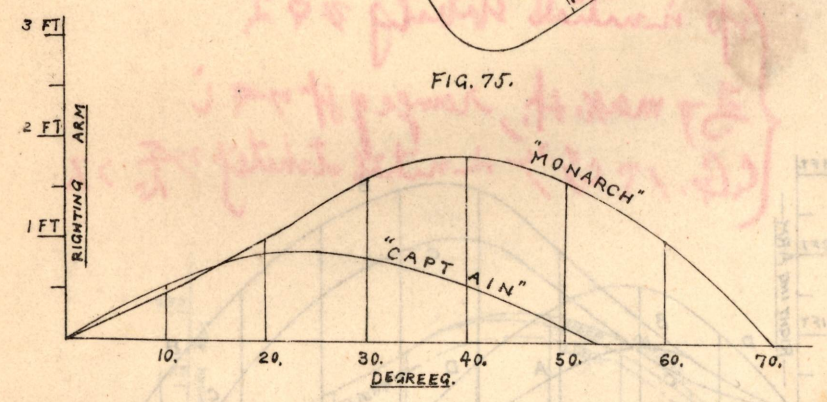


FIG. 76.

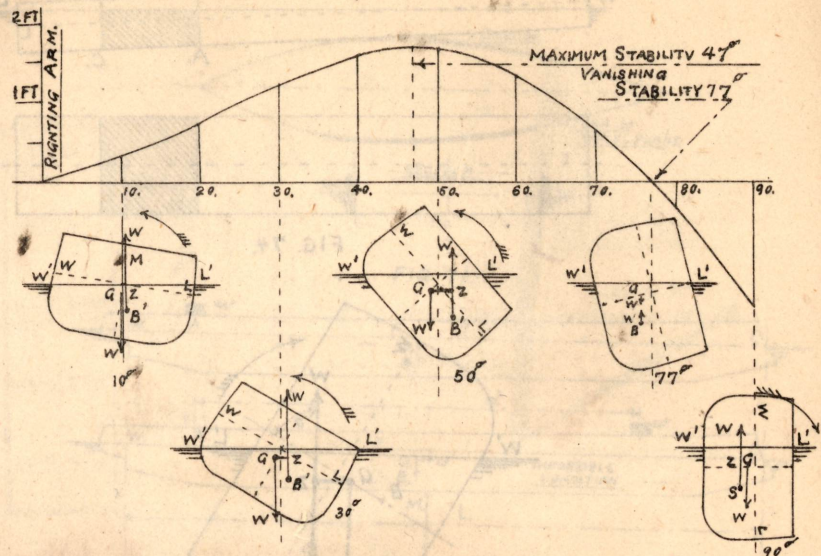


FIG. 77.

放置

Initial stability 202
 Max. H. range of H 20 i
 (G. 1.5) Initial stability 202

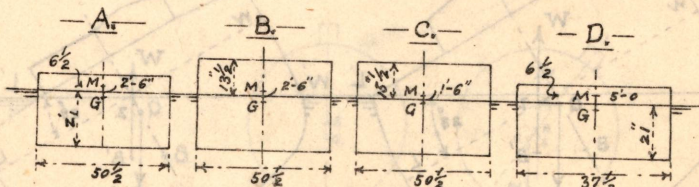
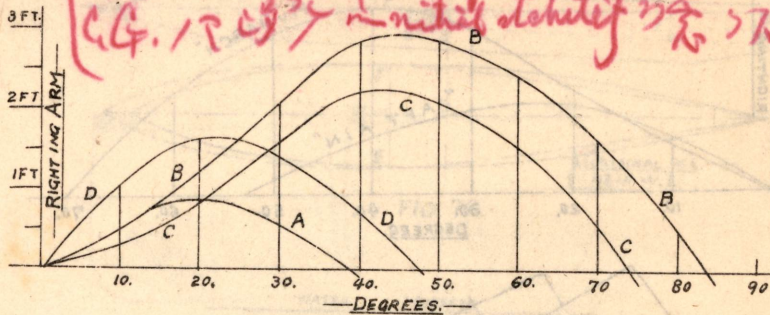


FIG. 78.

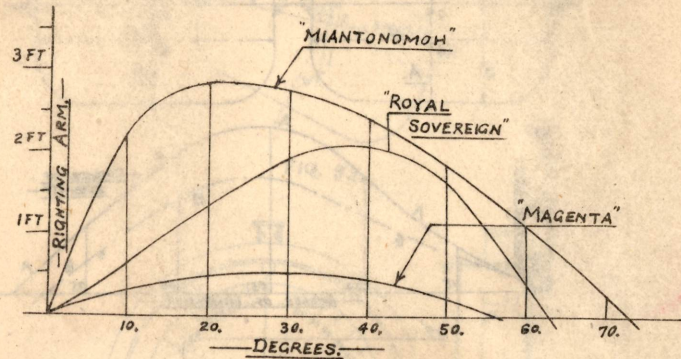


FIG. 79. - Curves of stability.

Initial stability 202
 Max. H. range of H 20 i
 (G. 1.5) Initial stability 202

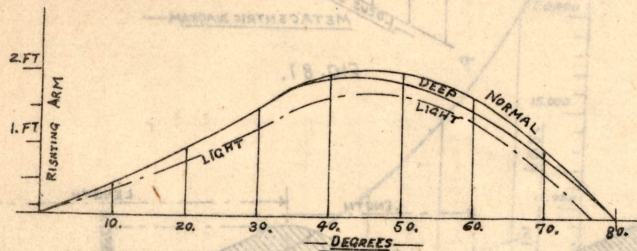


Fig. 80. - Stability curves.

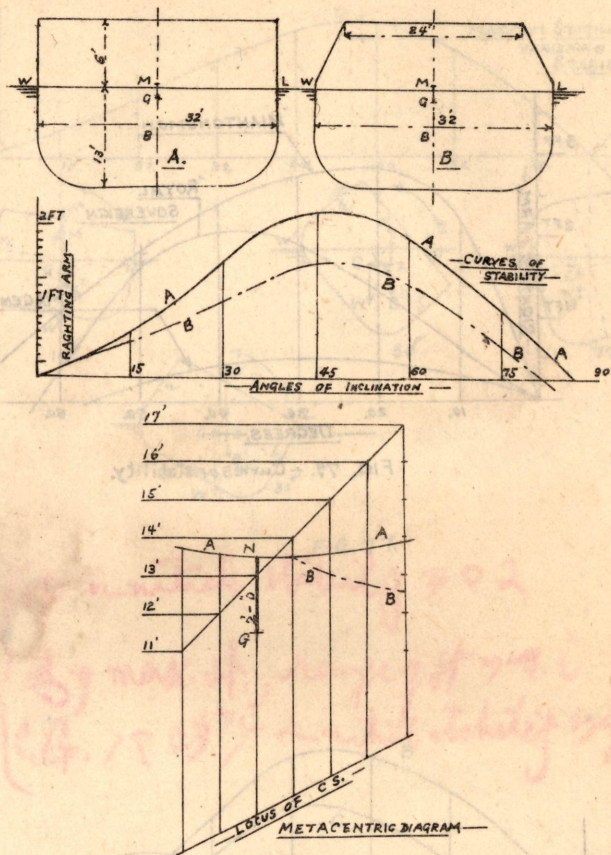


FIG. 81.

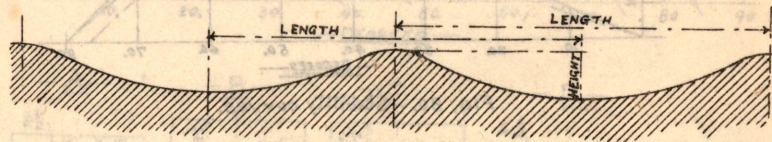


FIG. 82.—Wave profile.

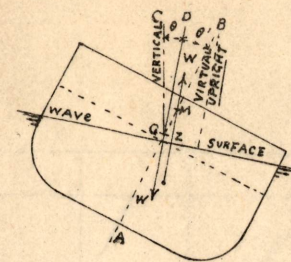


FIG. 83.

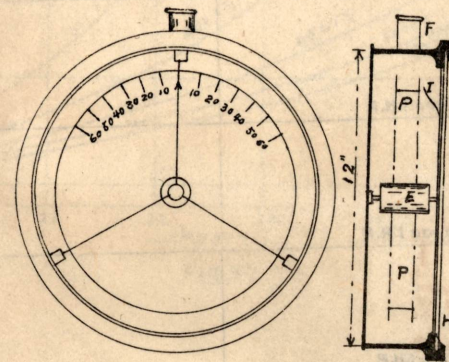


FIG. 84.—Mallock's rolling indicator
H.H. Glass front B, Hollow boss; I, Pointer;
F, Filling hole and expansion box.

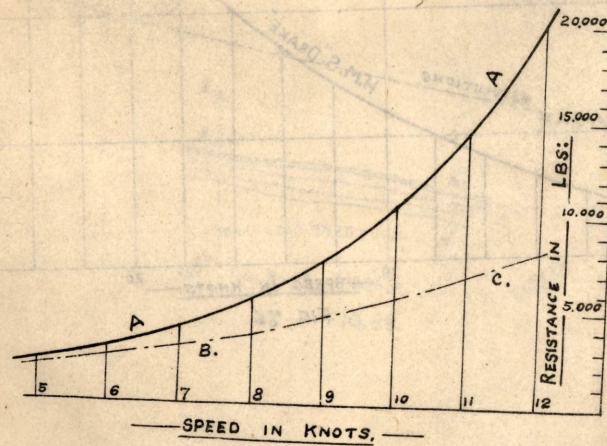


FIG. 85.

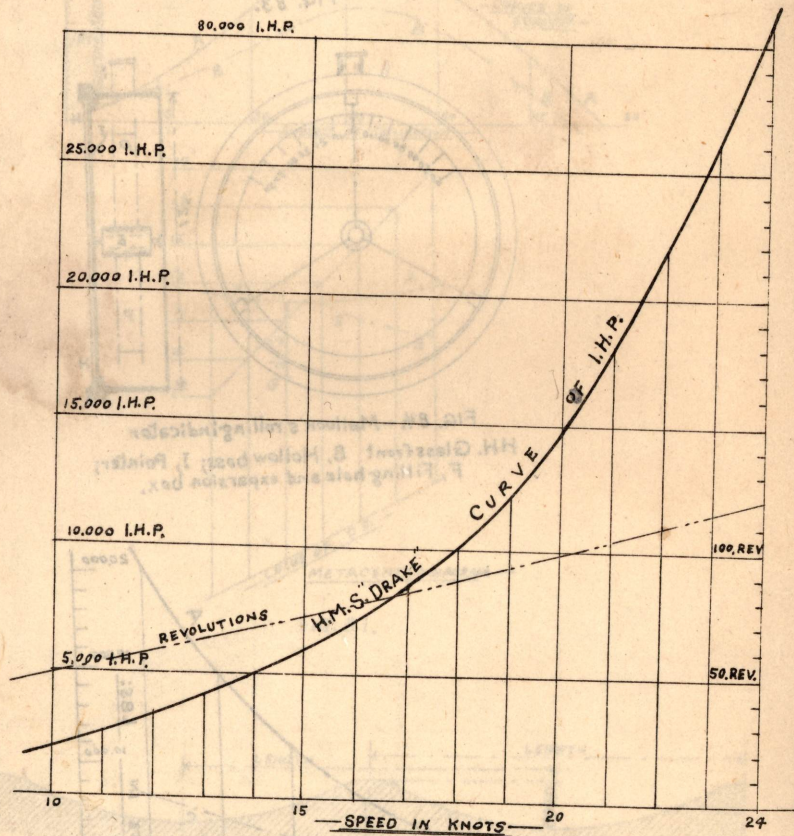


FIG. 86.

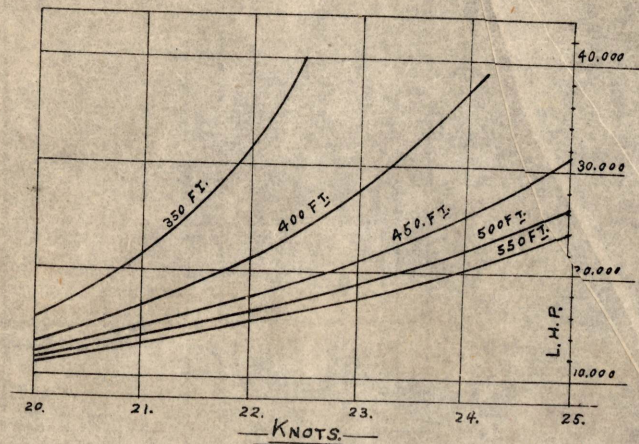


FIG. 87.

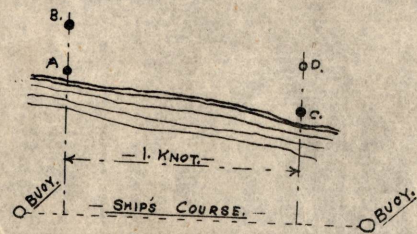
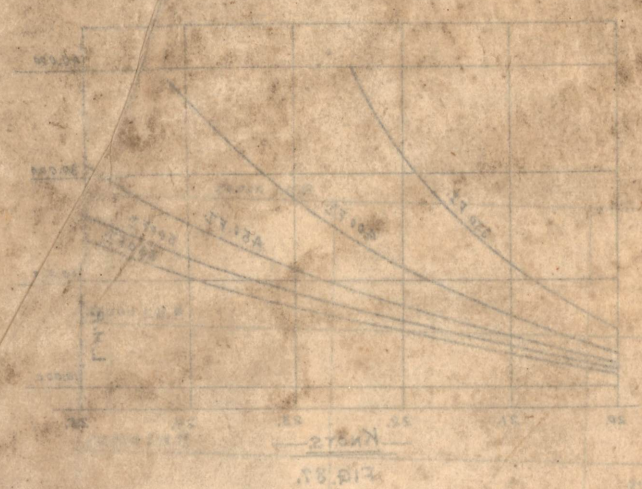


FIG. 88.



| | | |
|------------------|------------------|------------------|
| 整 卷 | 理 号 | |
| 寄 贈 者 名 | | 都 築 中 文 |
| 可 單 一 卷 | 贈 用 卷 号 | 40.5. -7 |
| | | 29/5 |