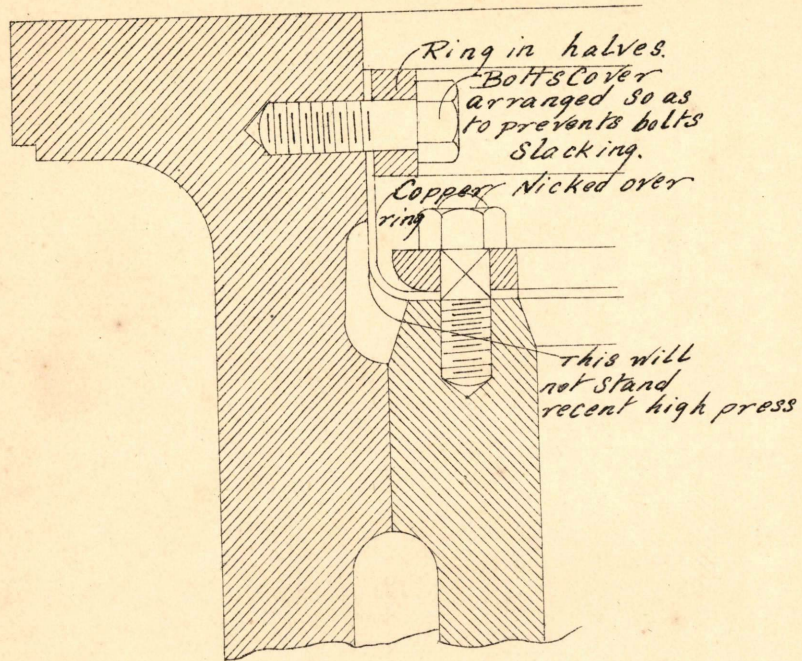
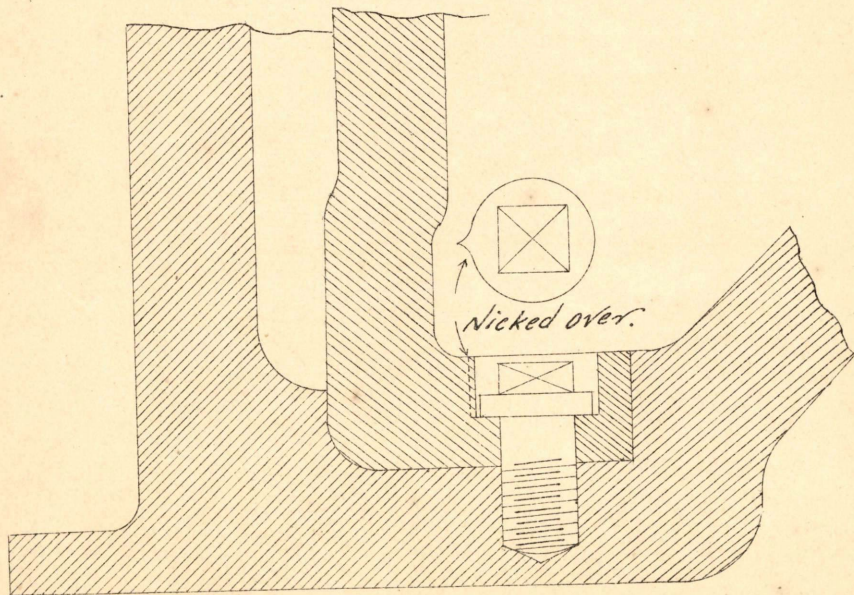


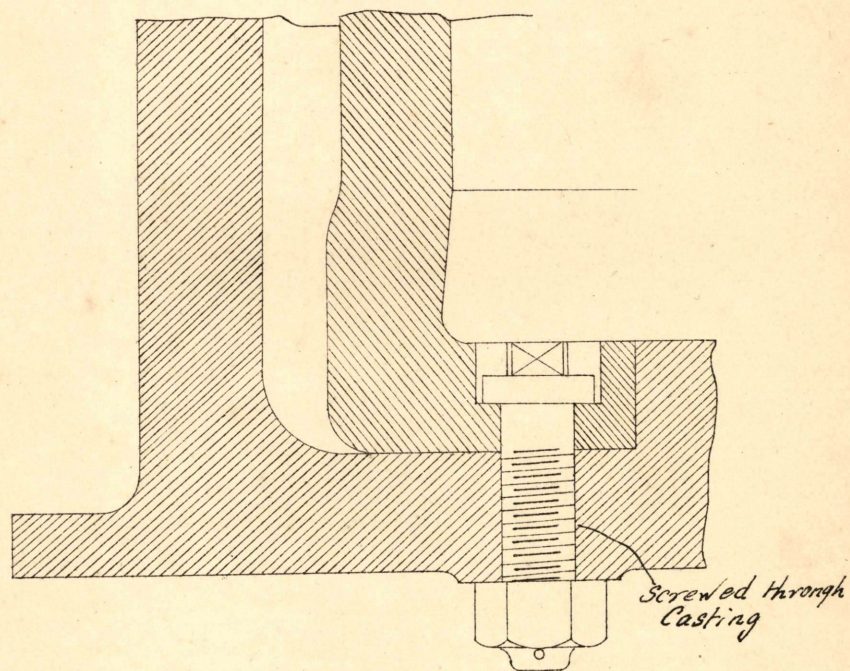
第四十三图



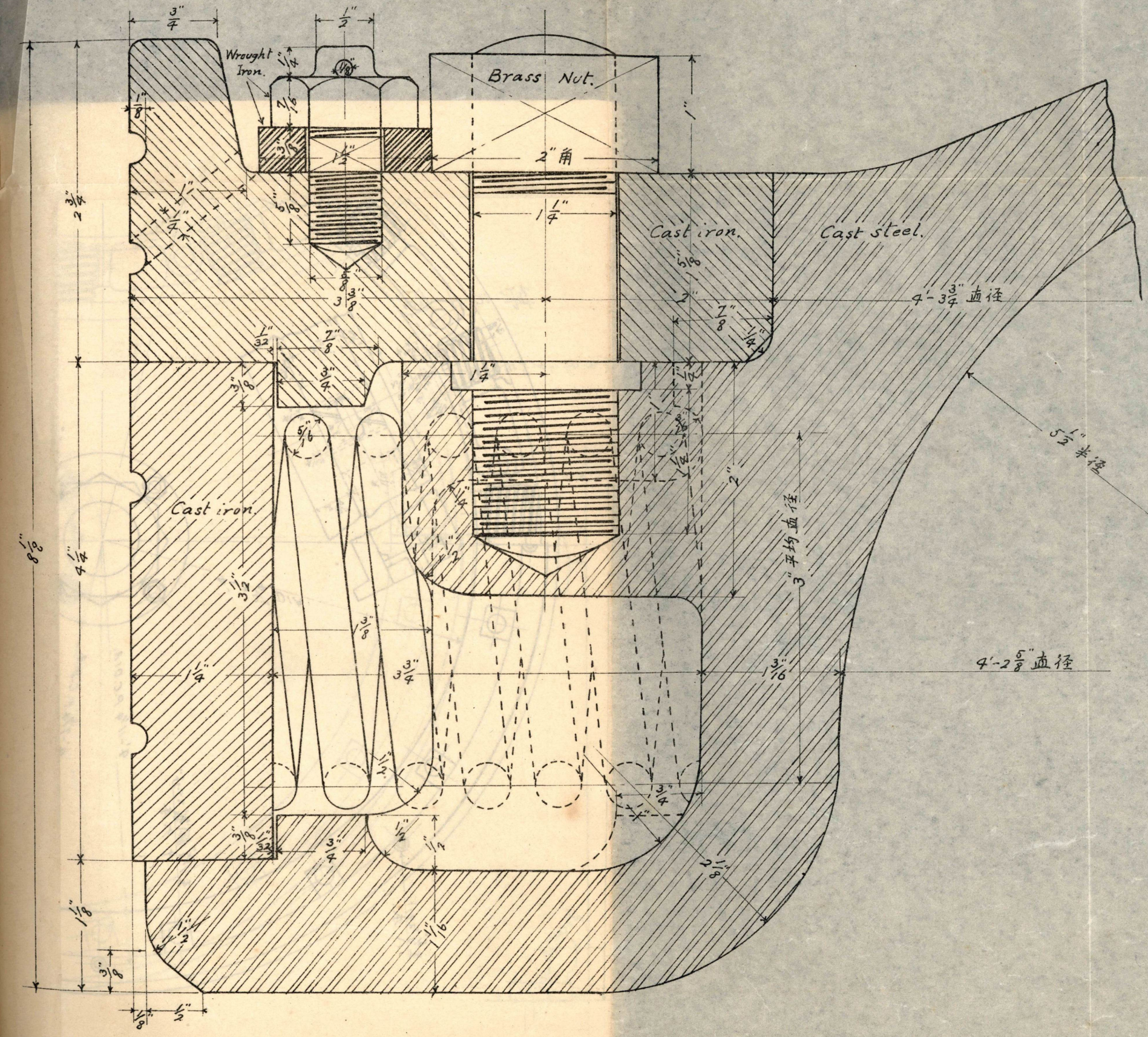
第四十四图



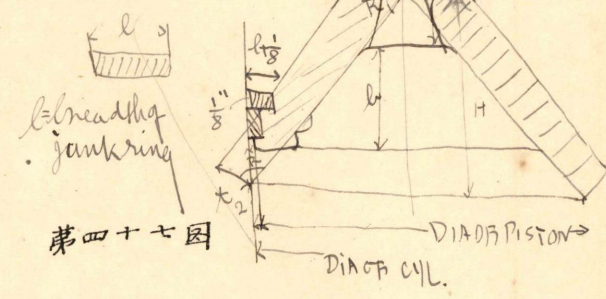
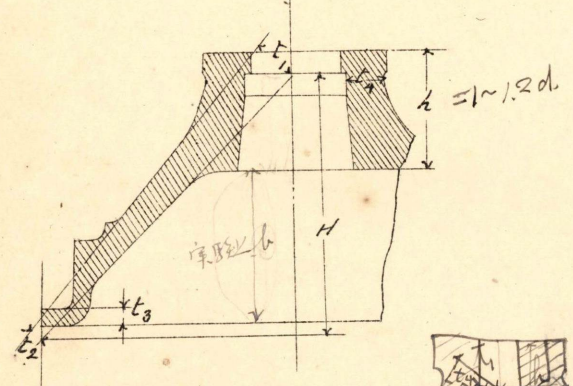
第四十五图



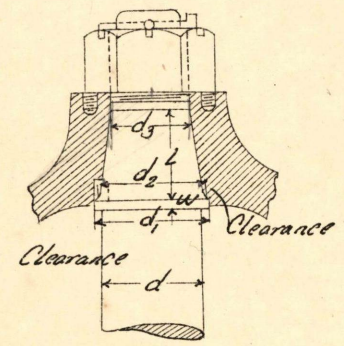
機關計畫
 第四十八圖
 低壓用吸鈔A部詳細

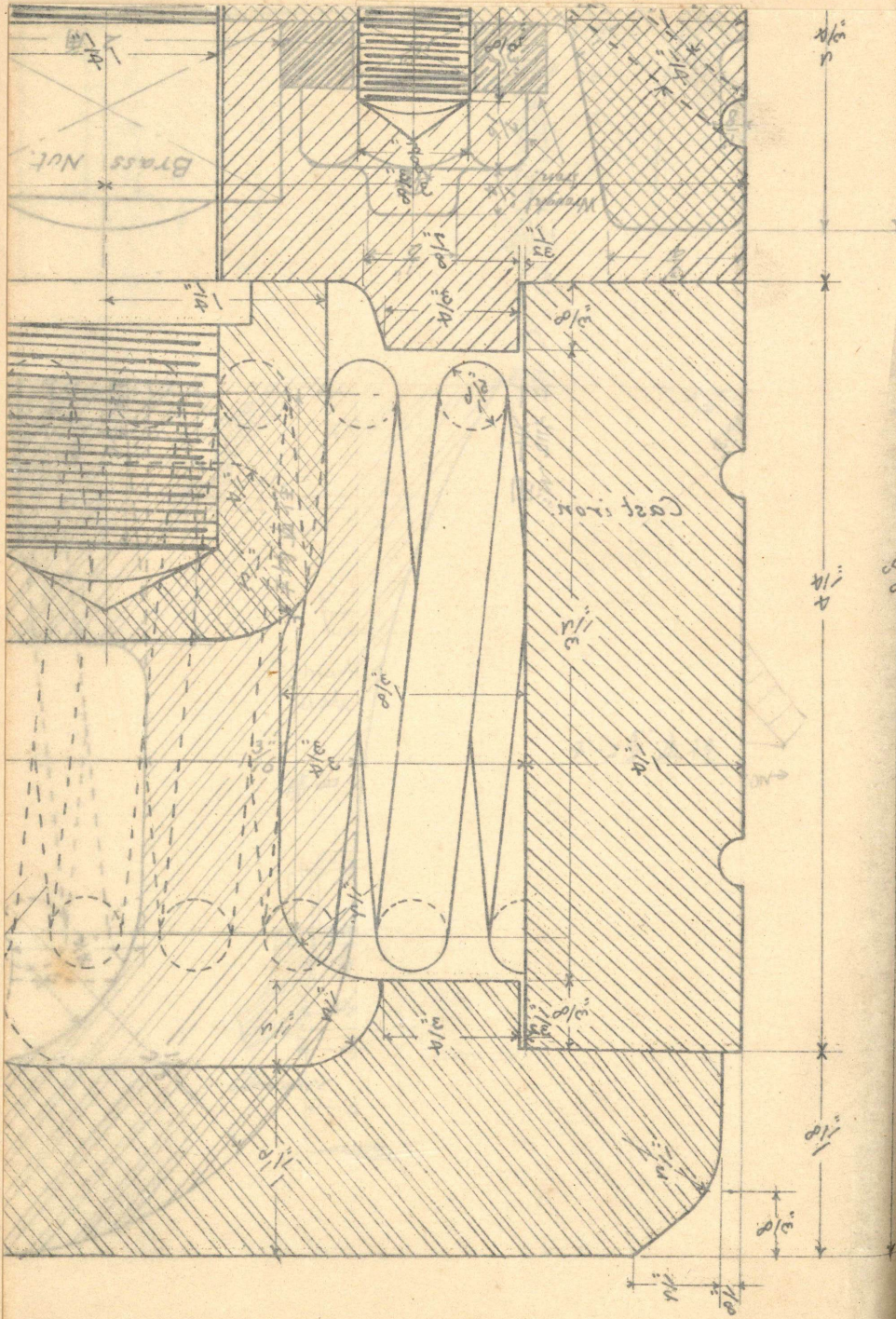


第四十六圖



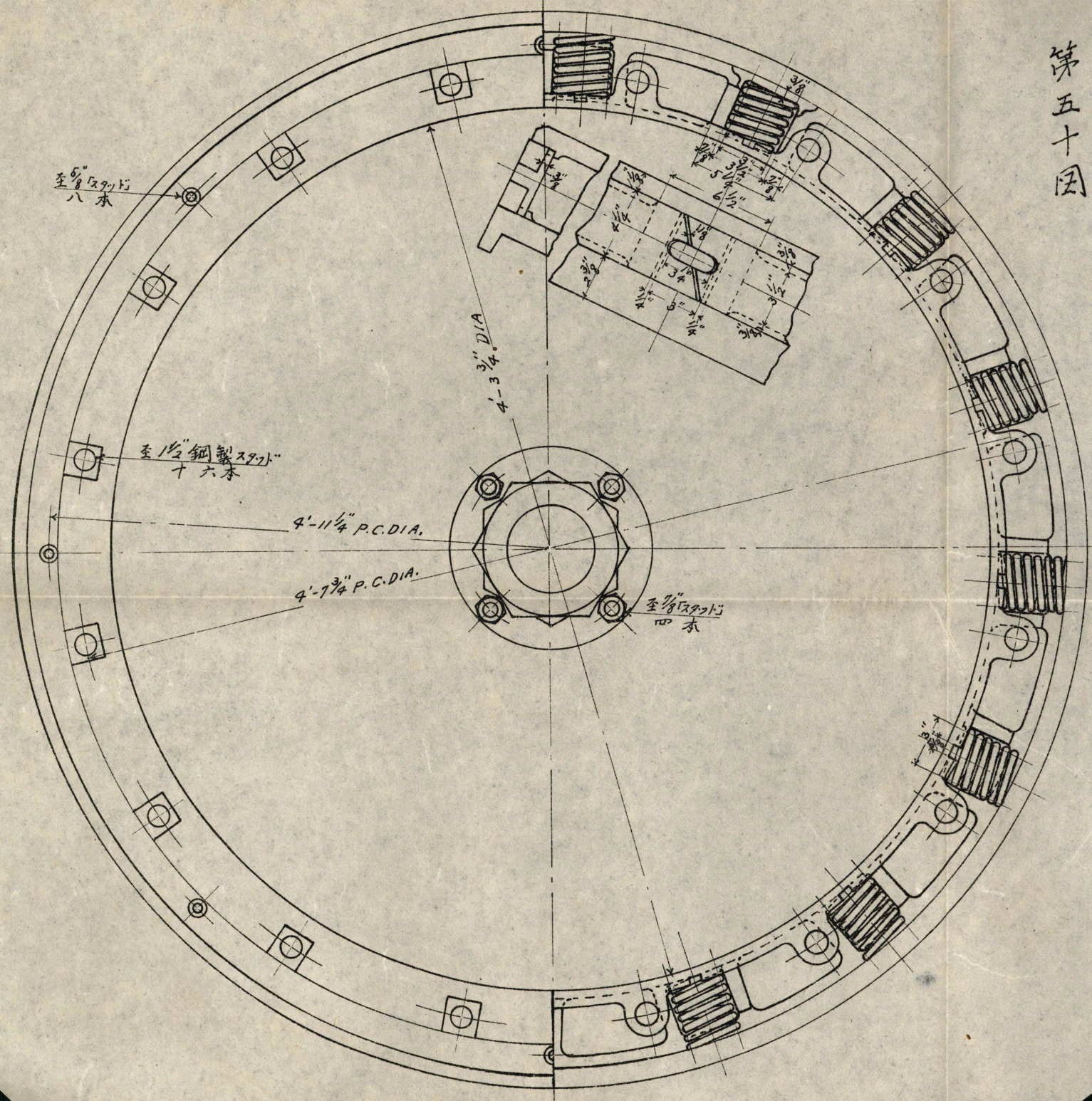
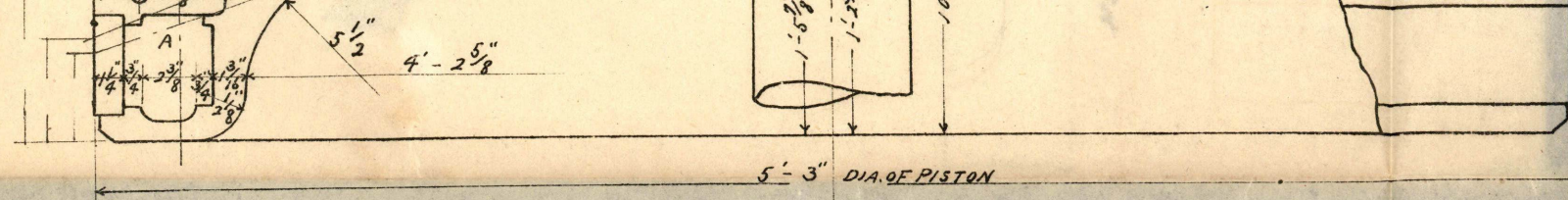
第四十七圖



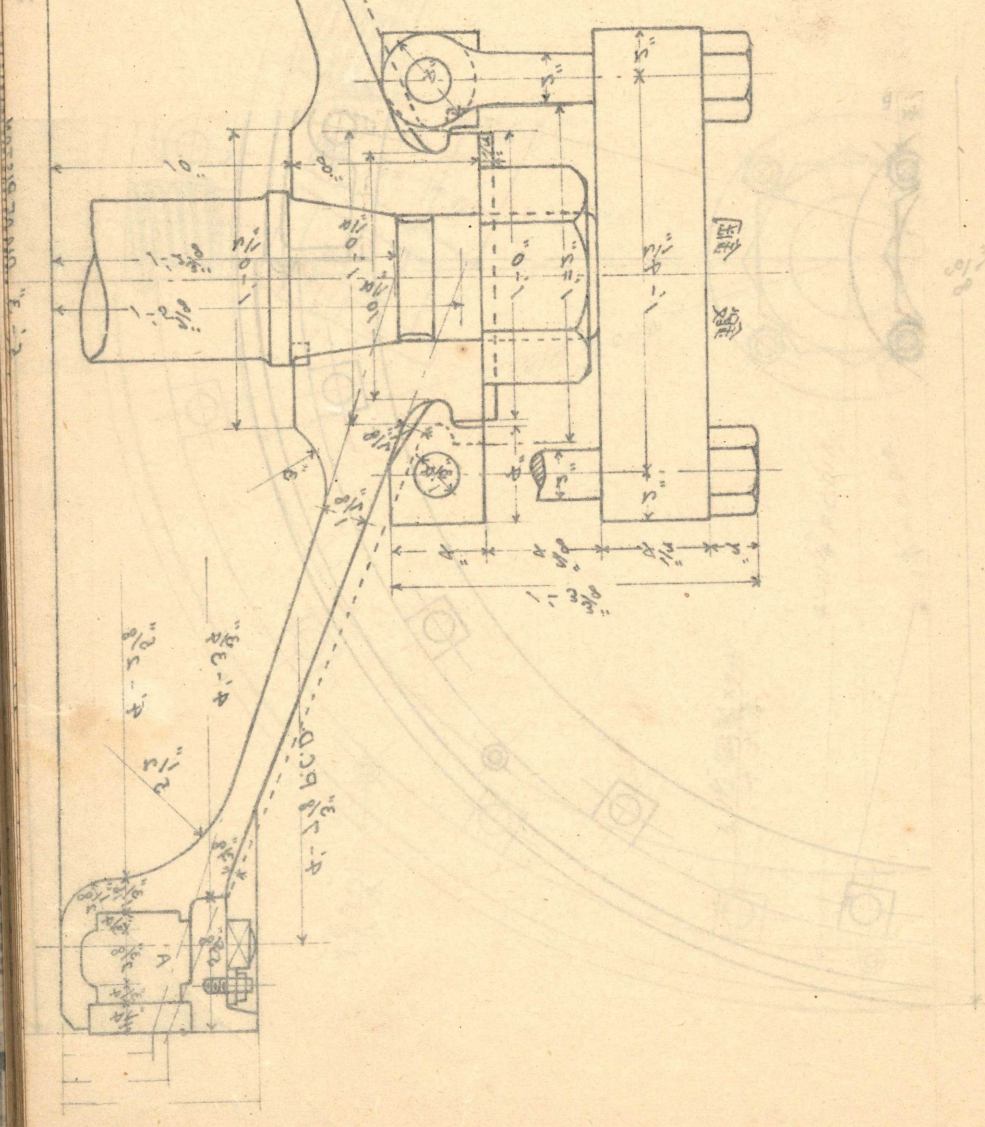


線ハ后部低圧ヲ示シタルモノナリ

第五十図



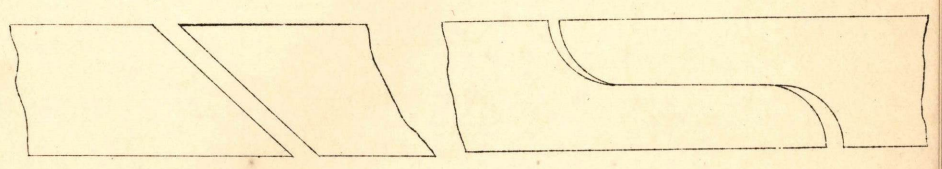
機閘計畫圖第四十九圖
 低壓用吸鑿
 註五線：后部係



第五十一圖

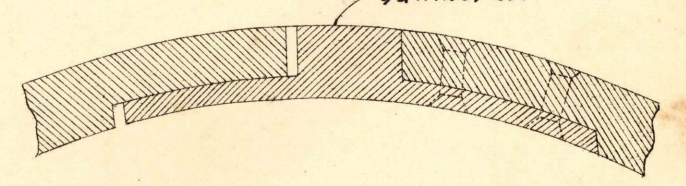
Simple Cut.

Overlap Cut



第五十二圖

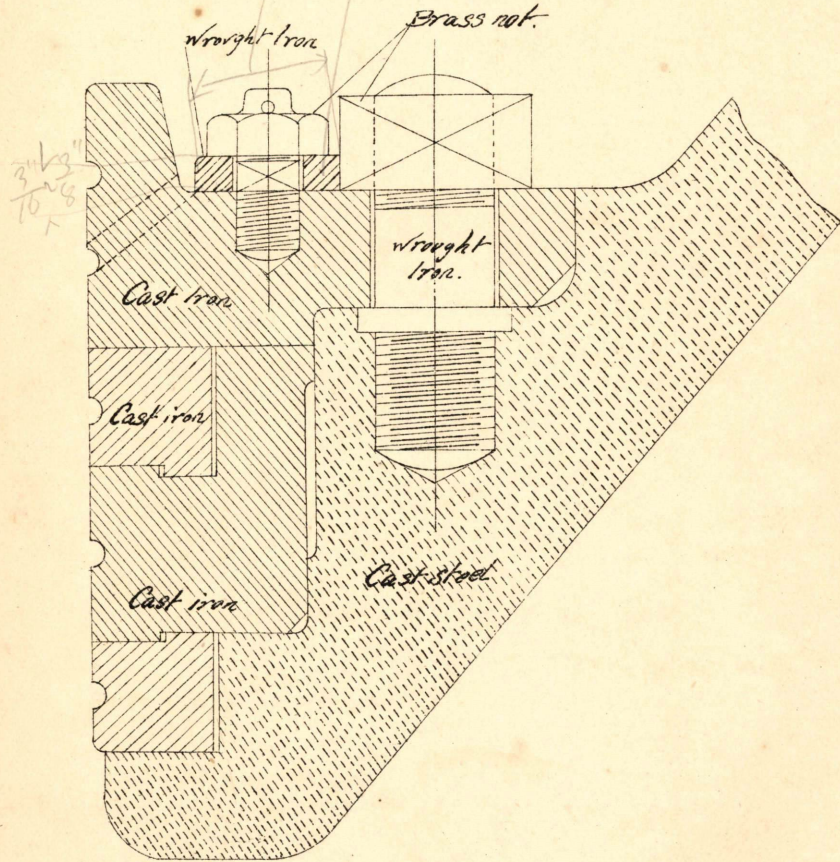
Gunnmetal.



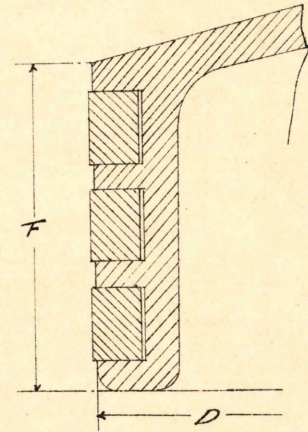
guard ring

$\frac{11}{14}$ $\frac{31}{8}$

第五十三图



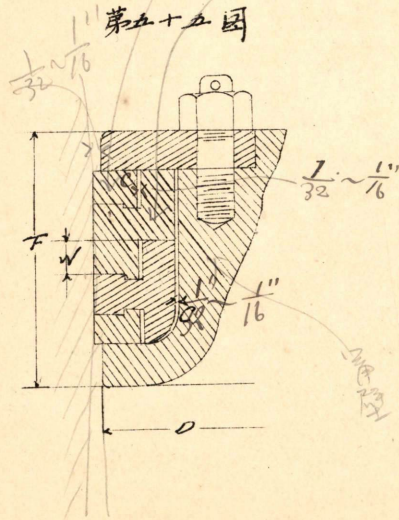
第五十四图



滑油王最

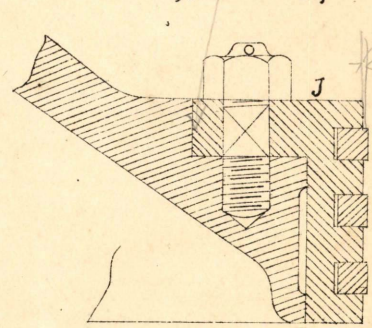
1/16

第五十五图

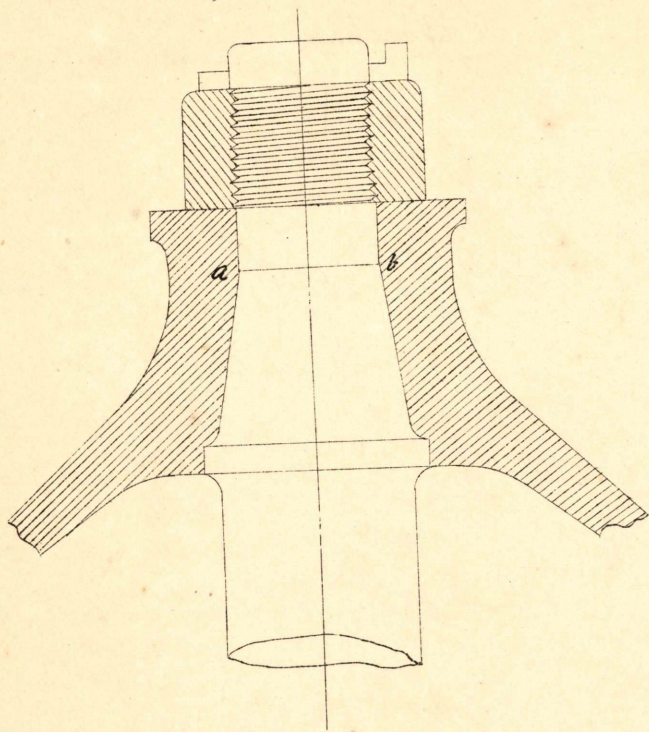


junk ring

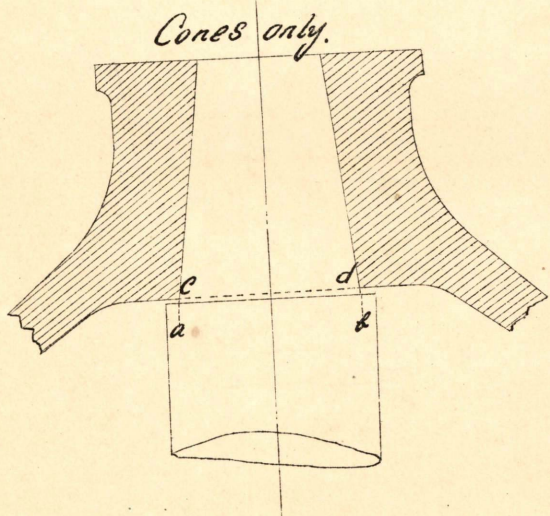
第五十六图



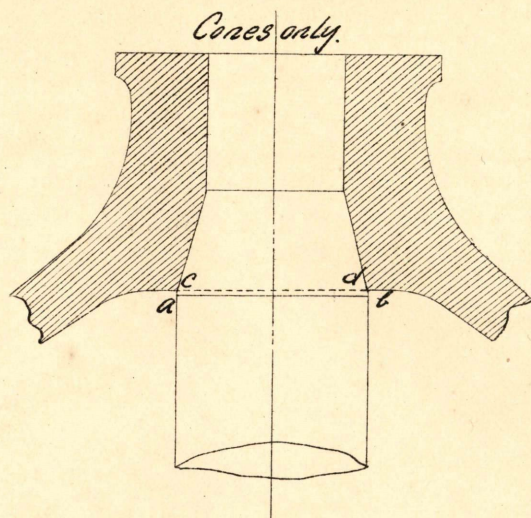
第五十七图



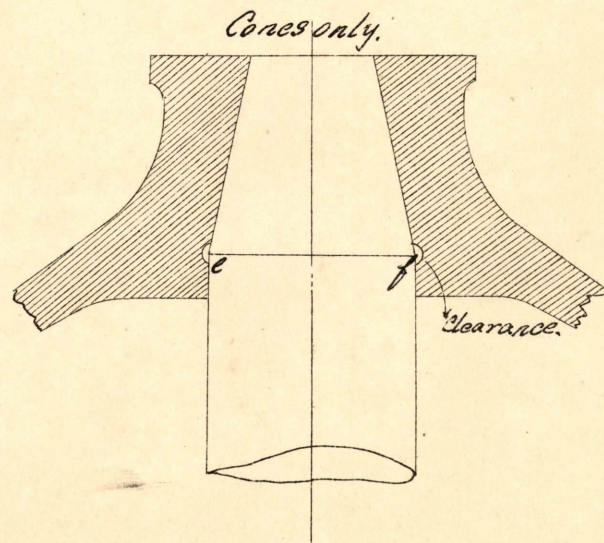
第五十八图



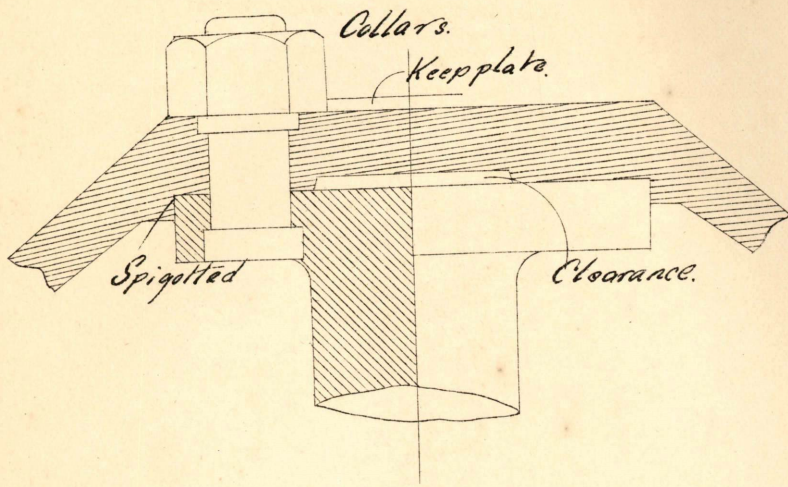
第五十九图



第六十图

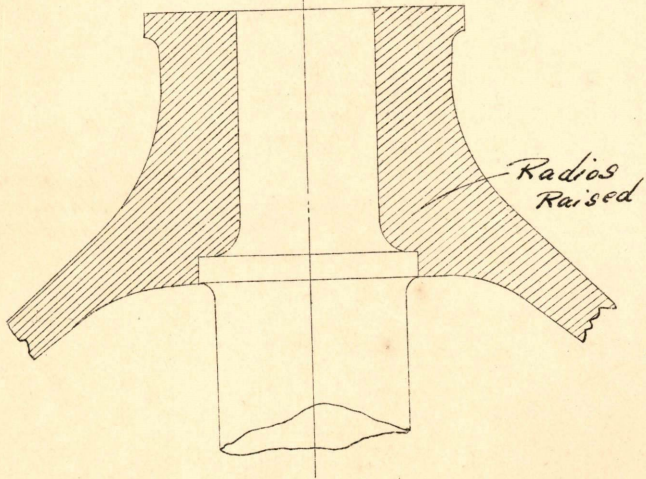


第六十一图



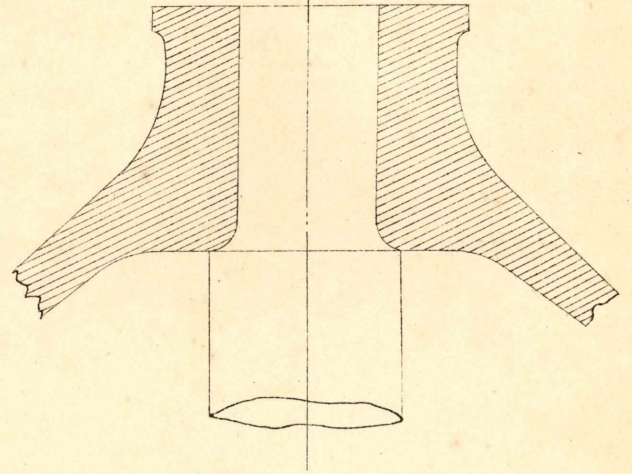
第六十二图

Collar and parallel neck.

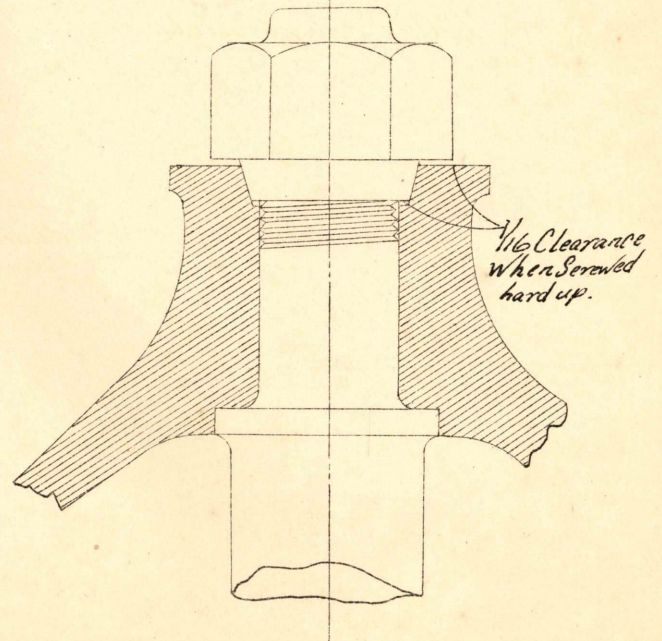


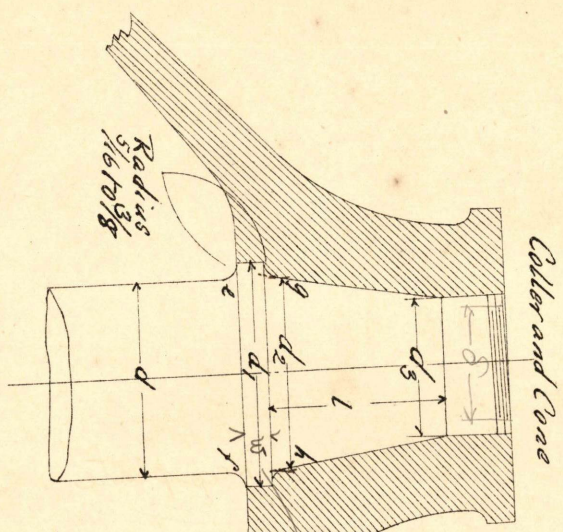
第六十三图

Collar and parallel neck



第六十四图





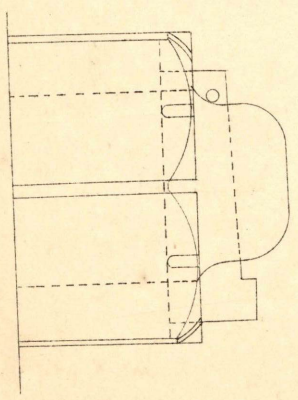
第六十五图

(page 41)

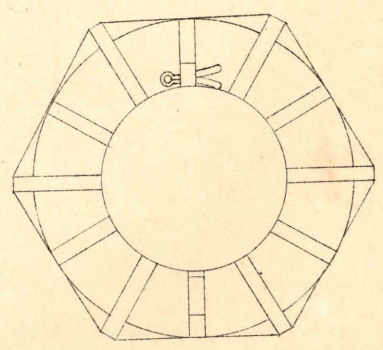
$$d_1 = d + \left(\frac{2}{4}\right) \frac{w}{4}$$

$$d_2 = d + \frac{1}{4} \frac{d}{9}$$

$$w = \frac{d}{9}$$

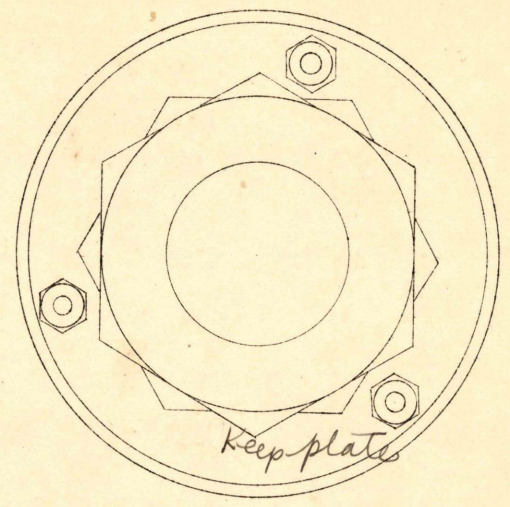


Split pin

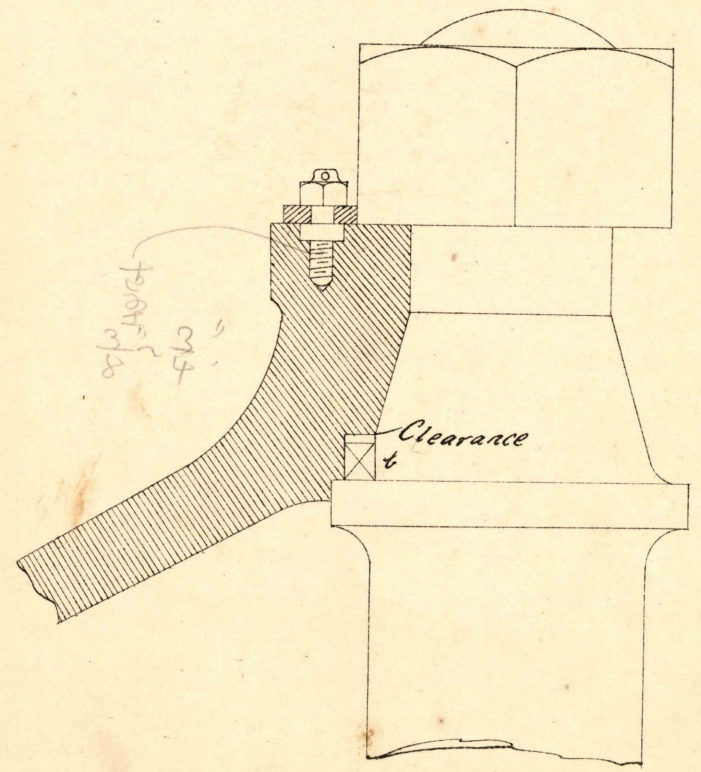


第六十六图

第六十七图

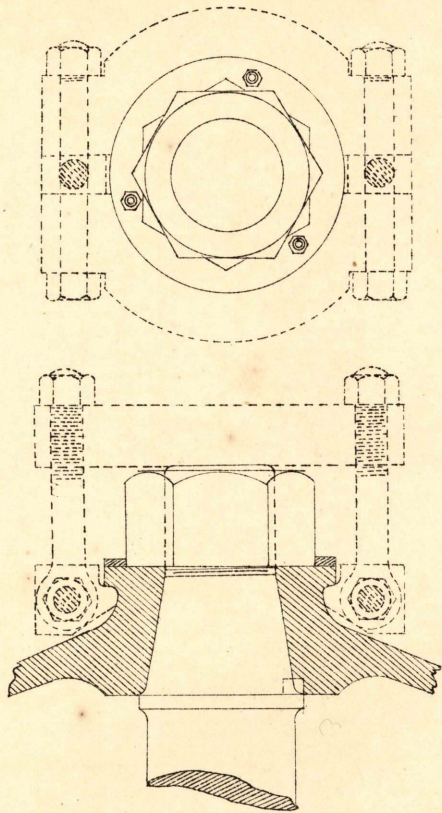


Keep plate

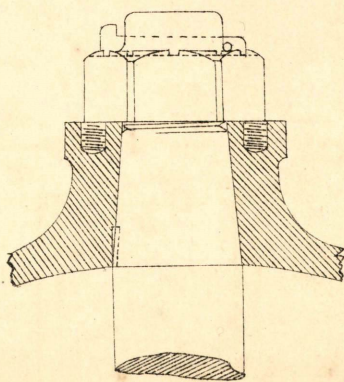


Clearance

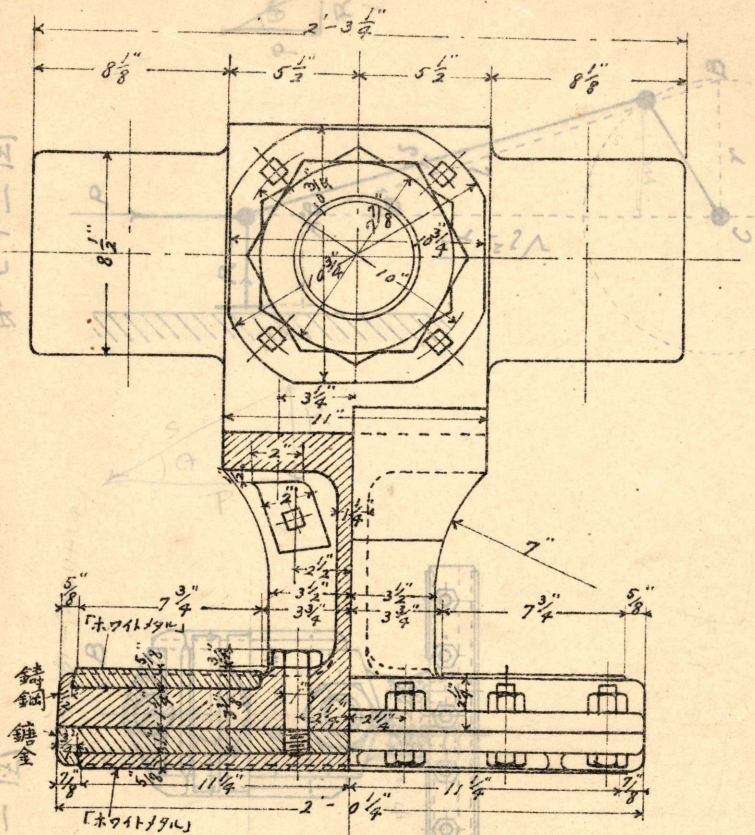
第六十八图



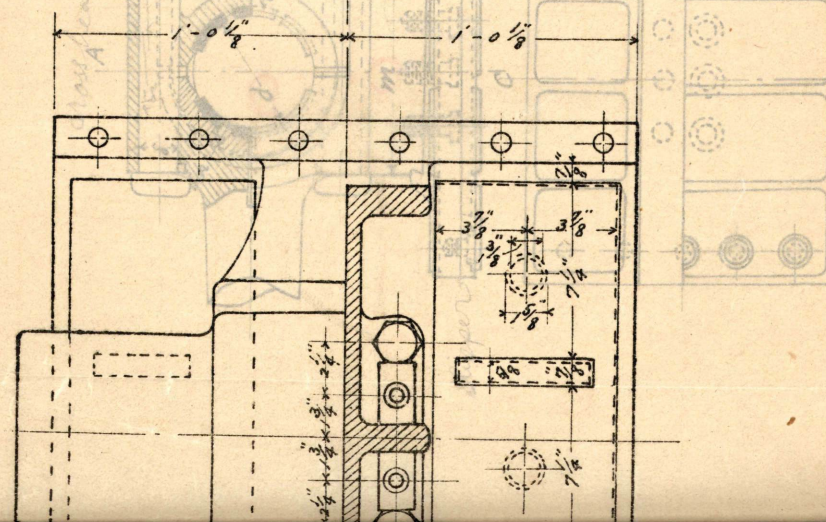
第六十九图



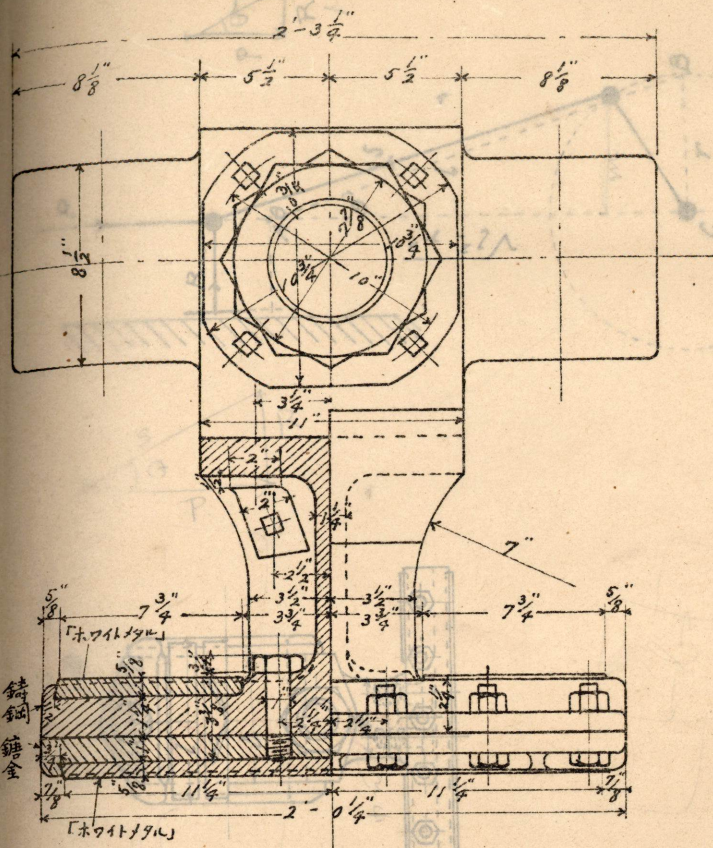
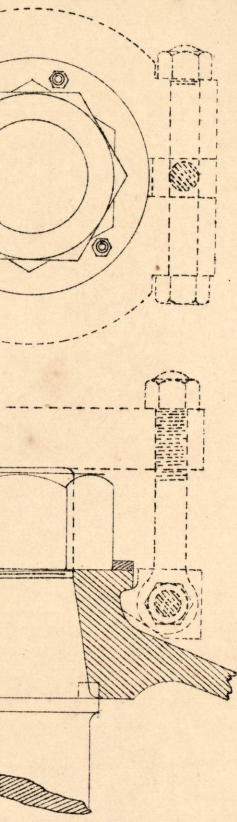
第七十二图



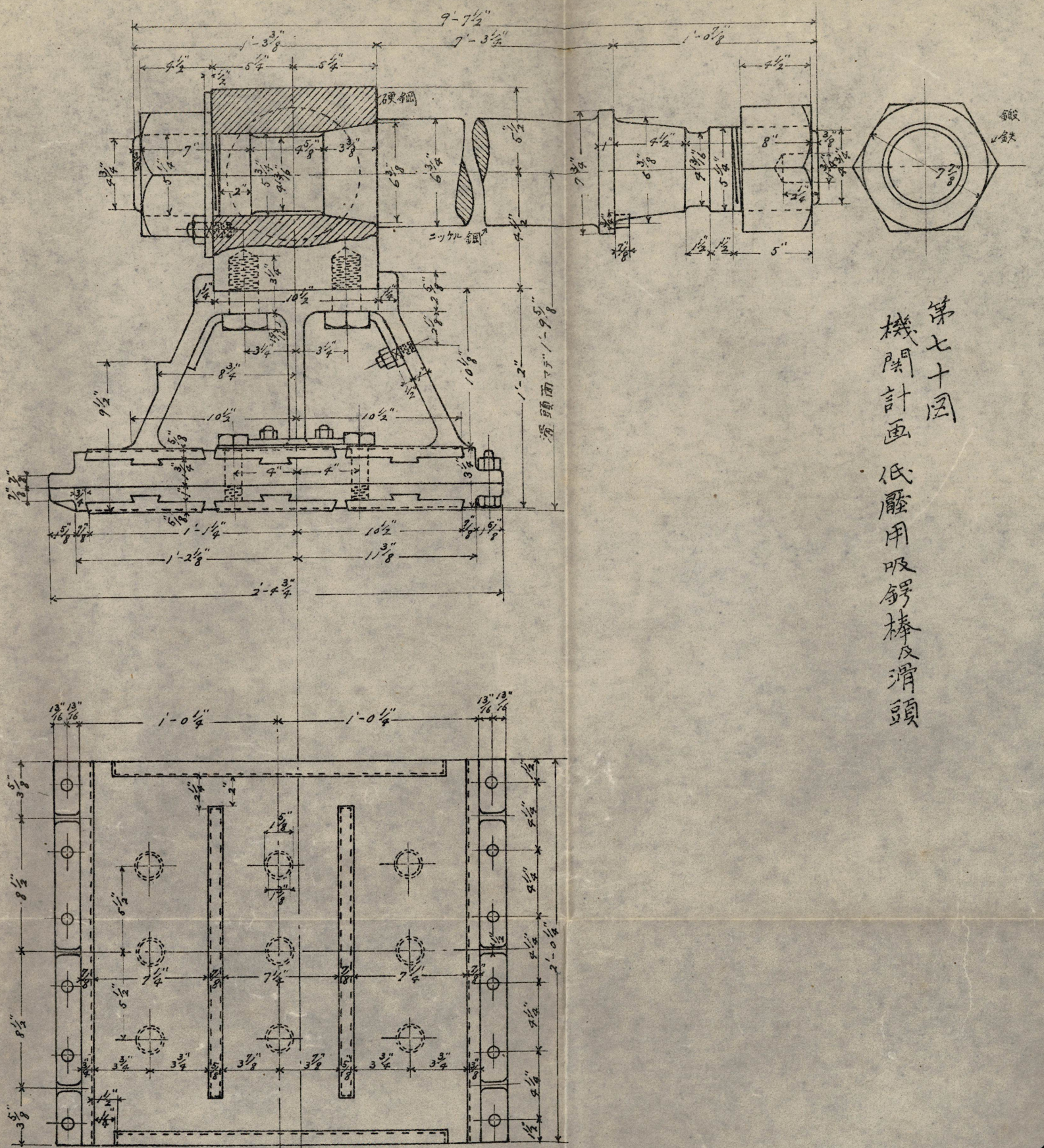
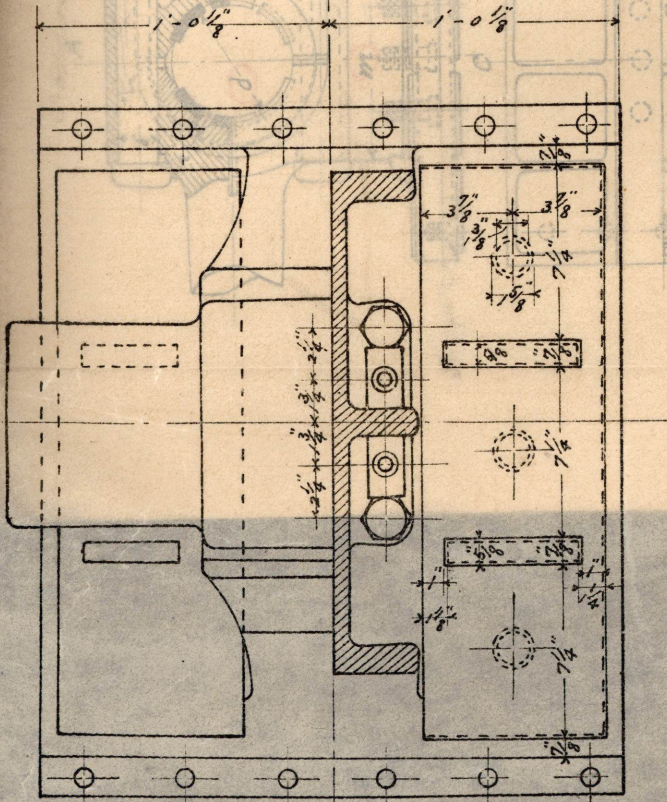
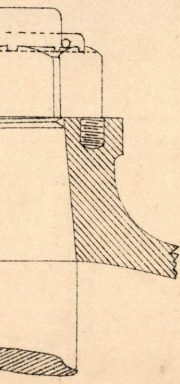
第七十一图



第六十八圖

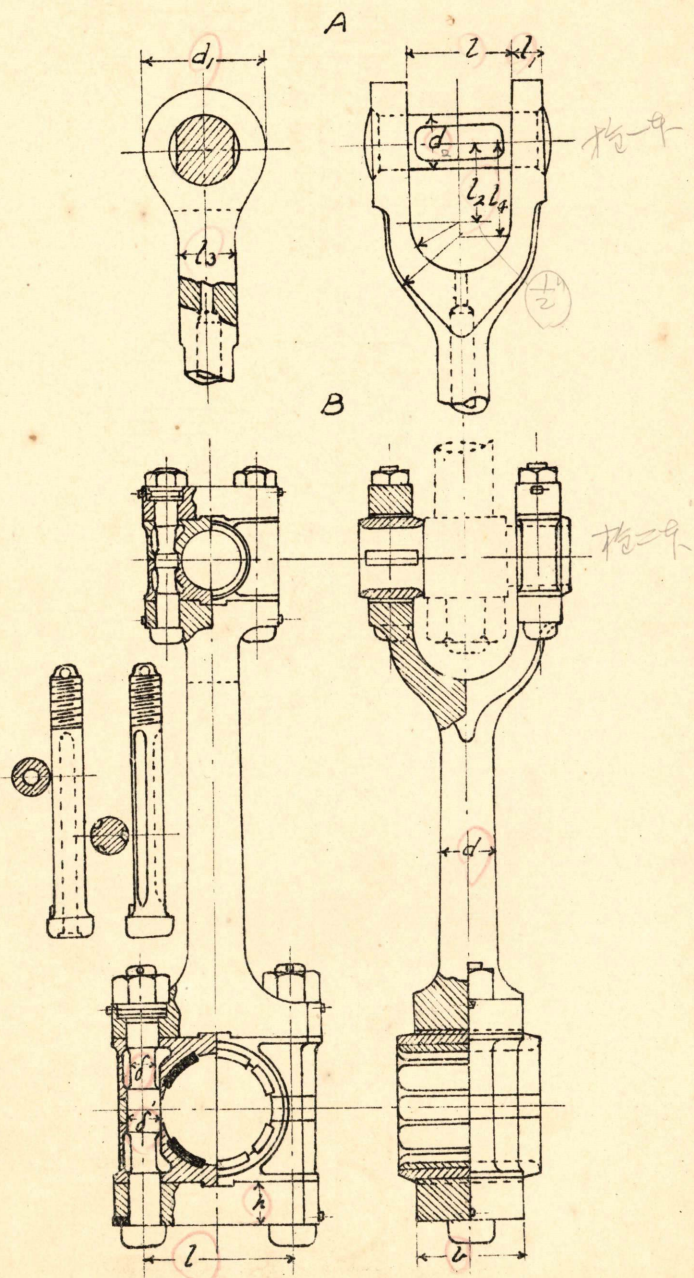


第六十九圖



第七十圖
機関計畫 低壓用吸鉛棒及滑頭

第七十三图



第七十四图

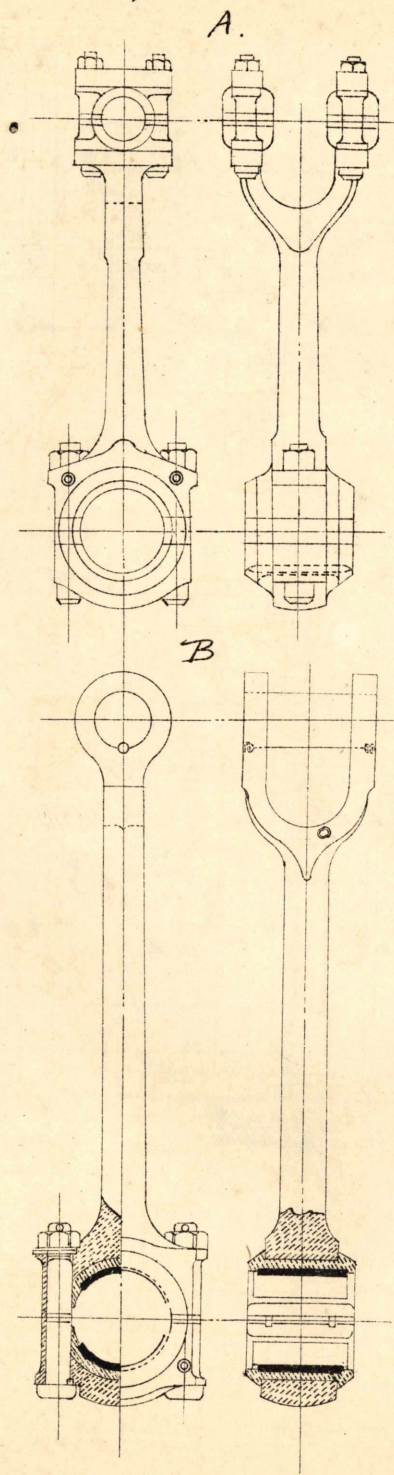
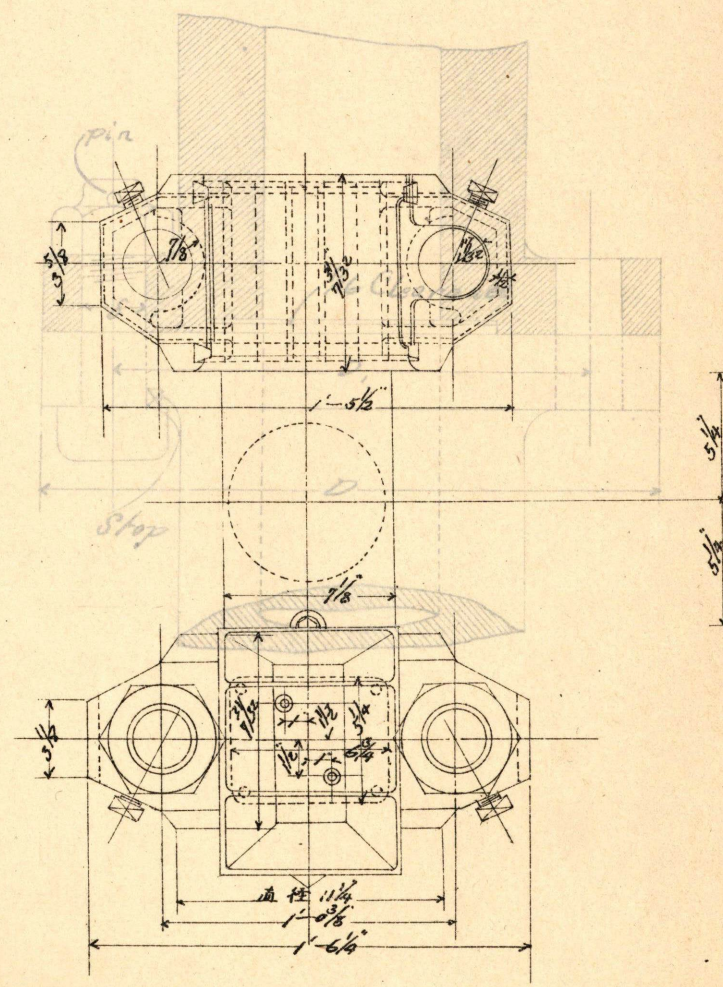
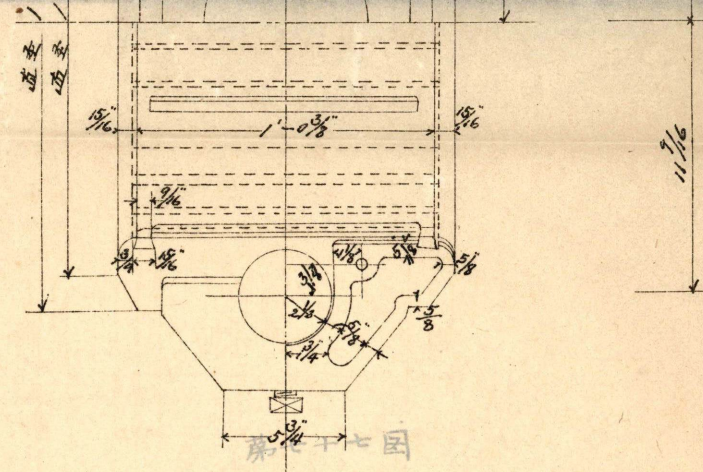
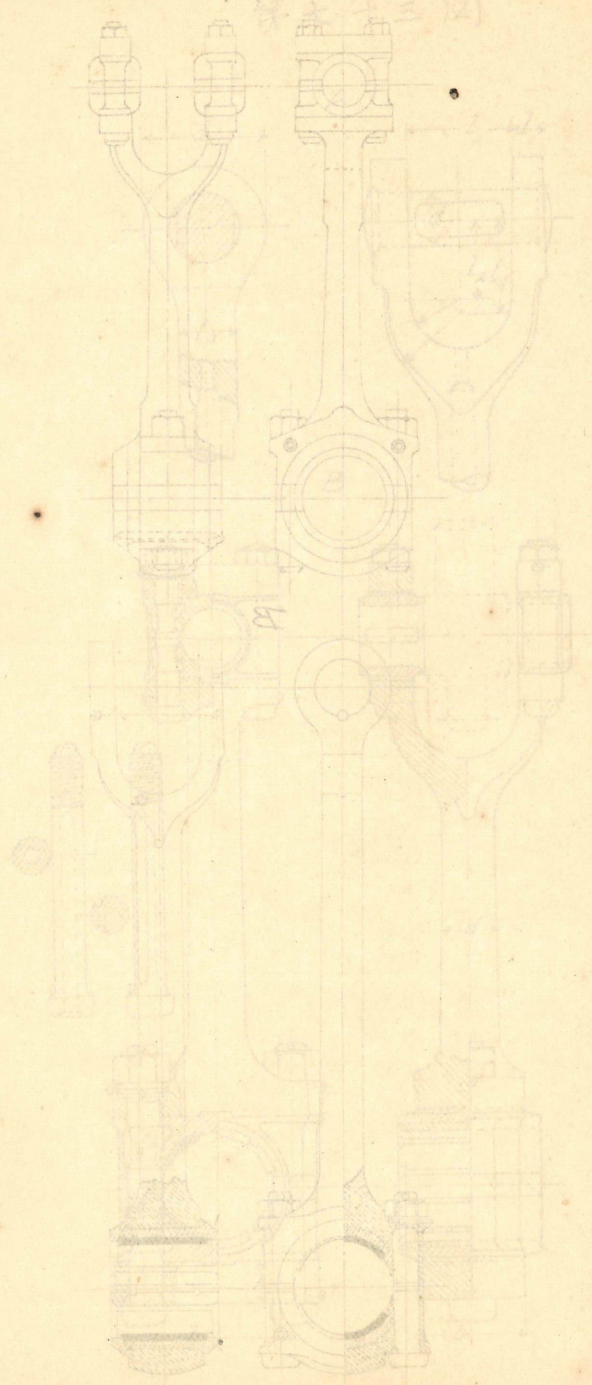
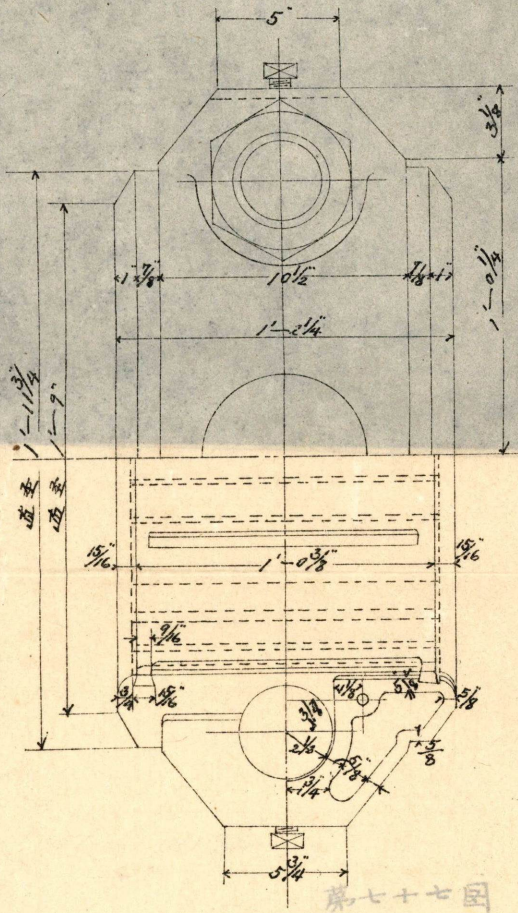
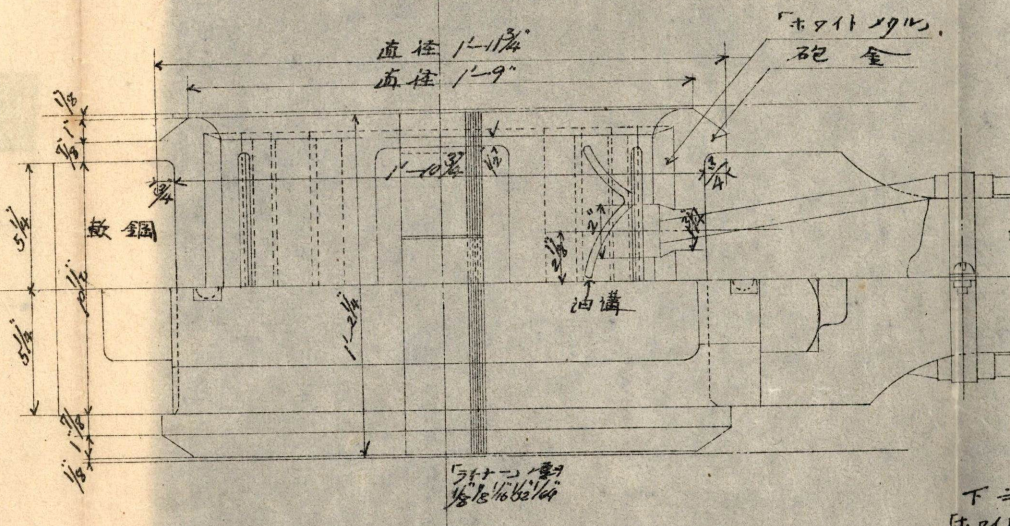
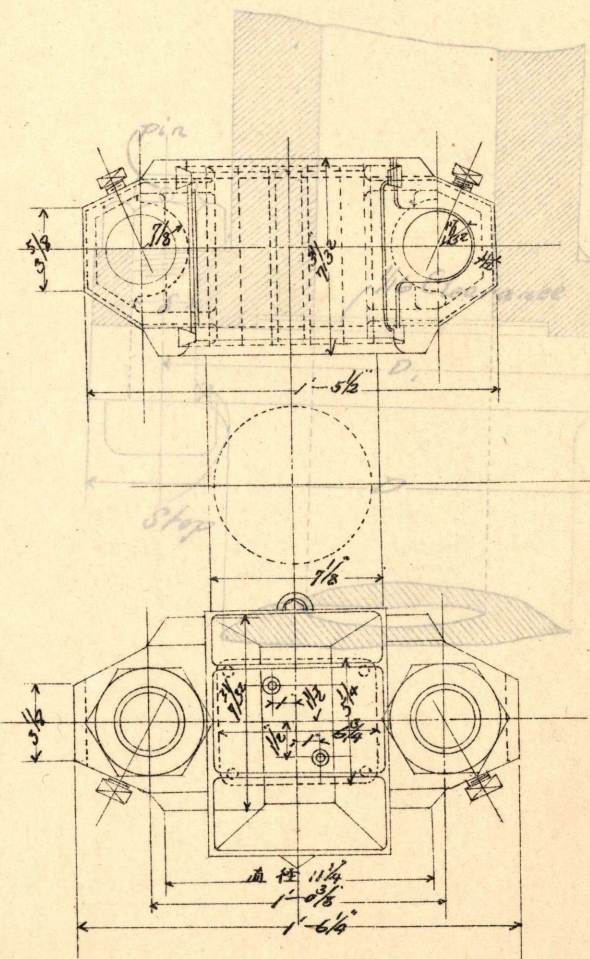
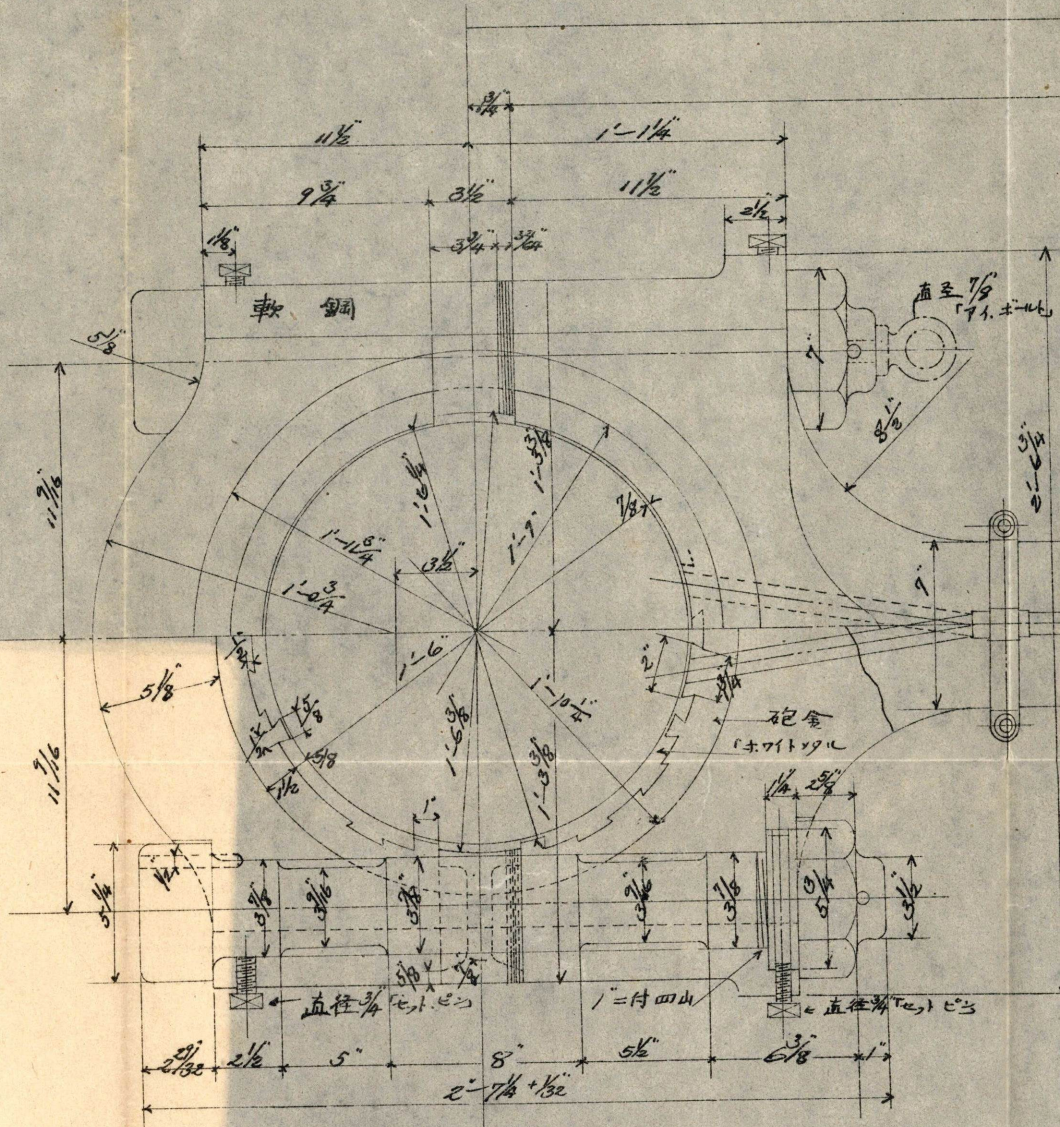


圖 甲 十 六 號



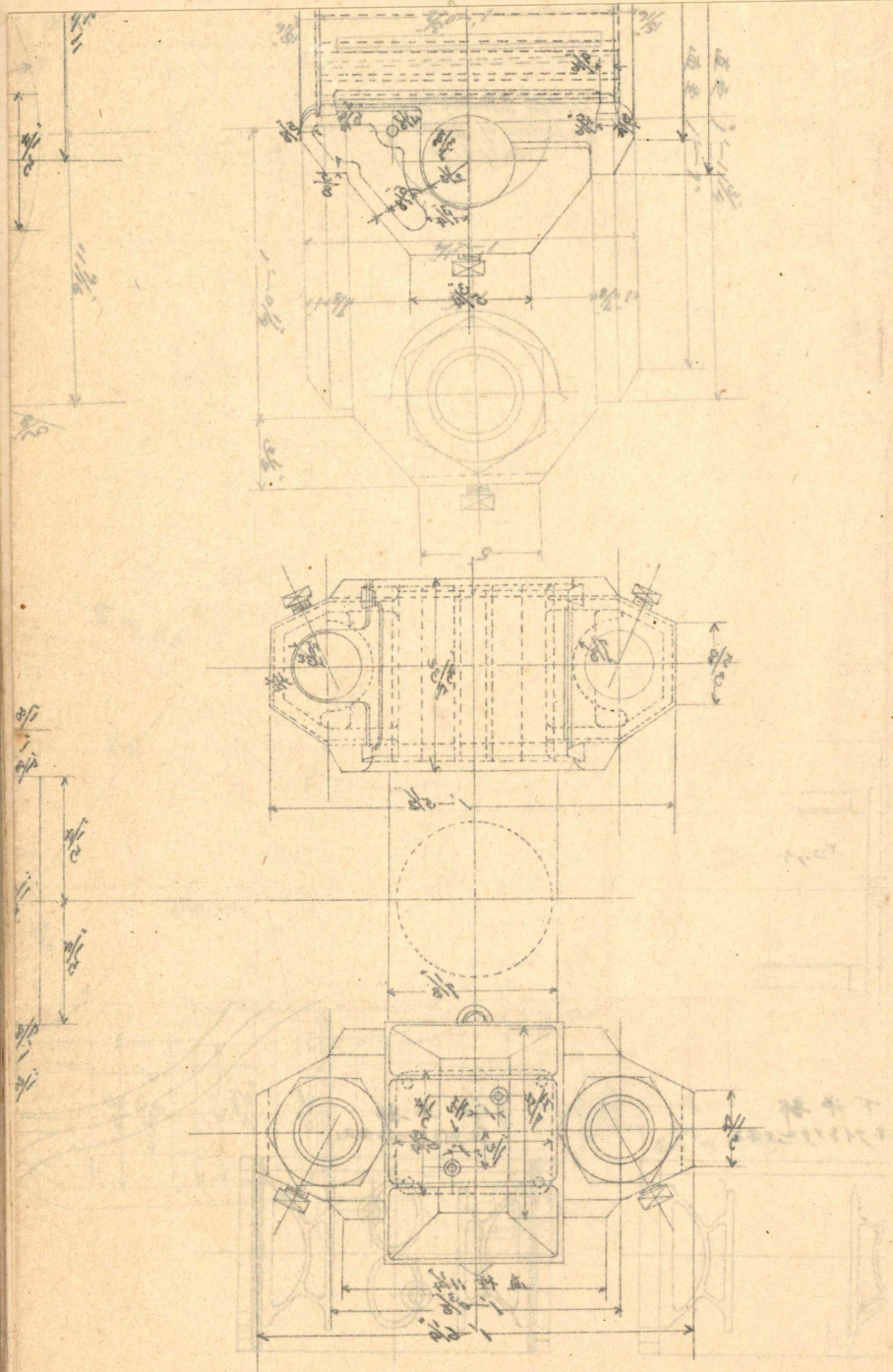


第七十七圖

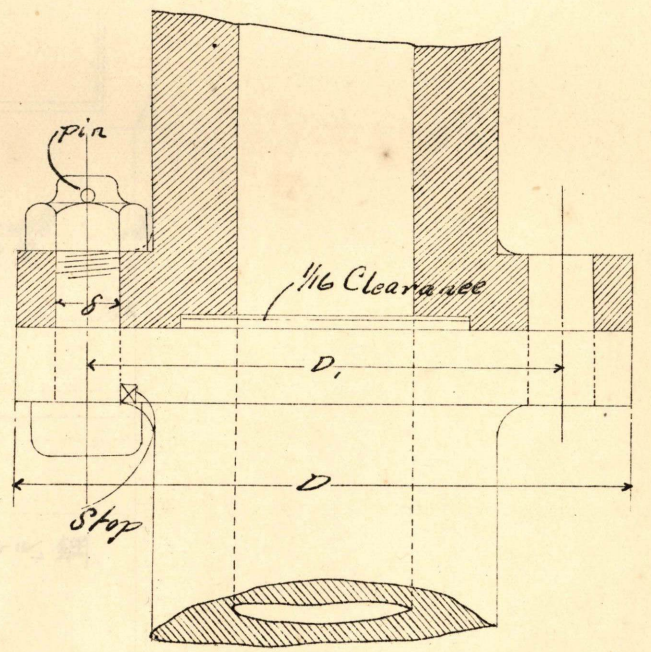


下三
付

四月十七日

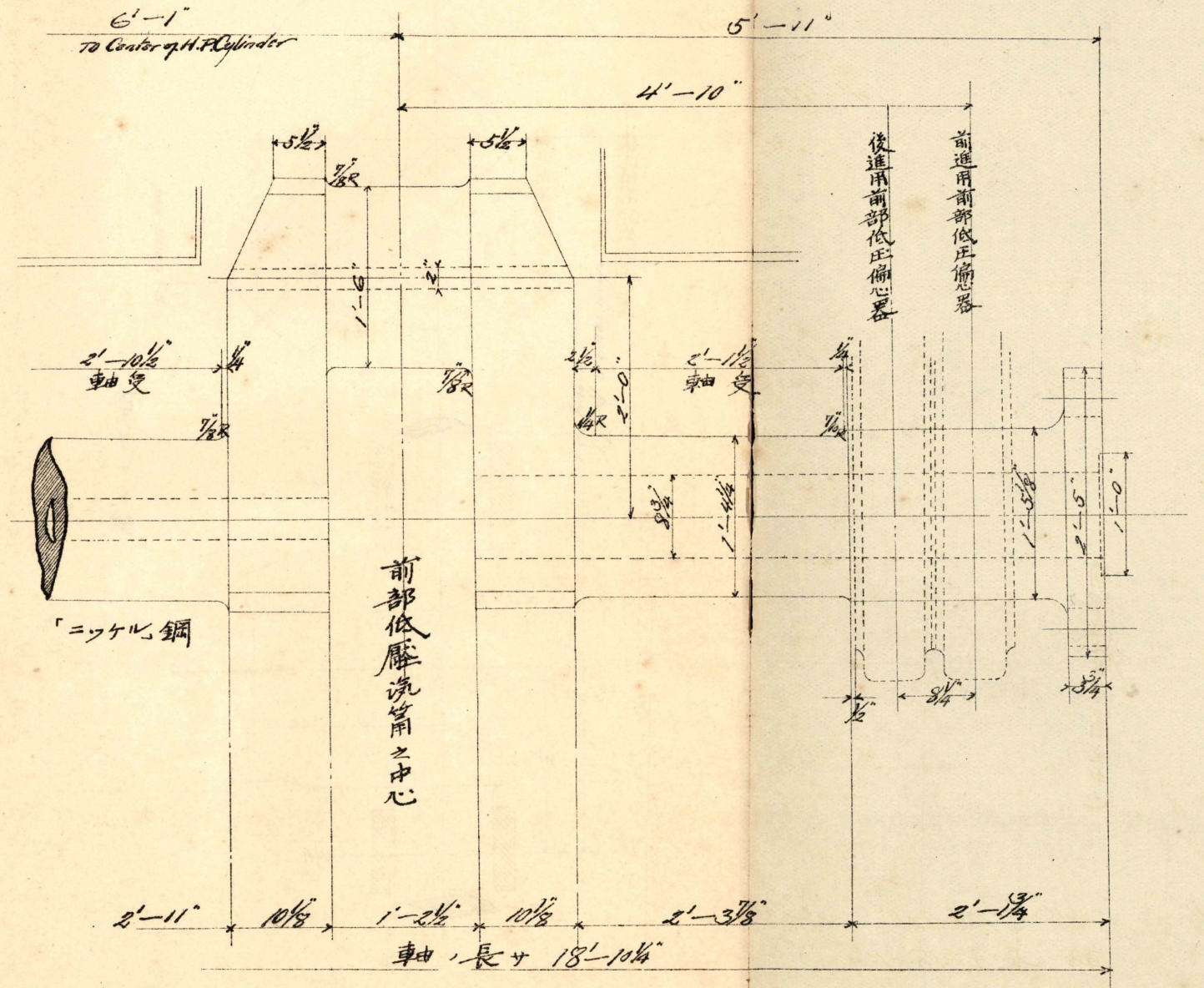


第七十七图

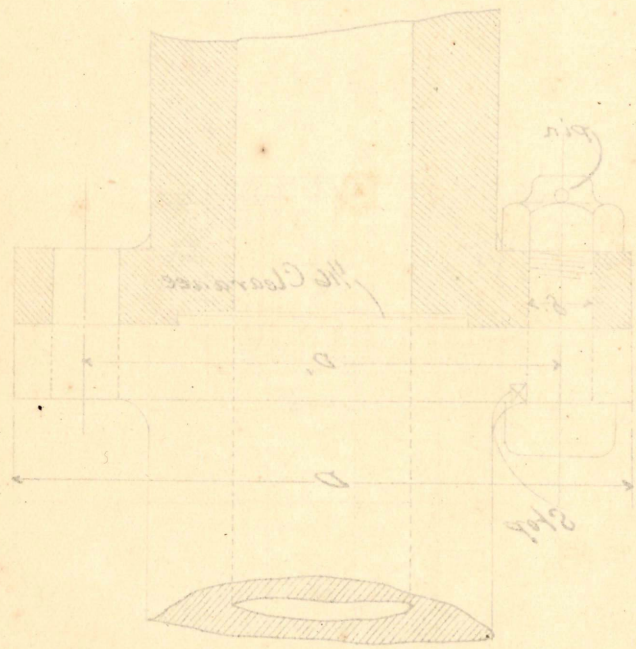


機車曲軸圖

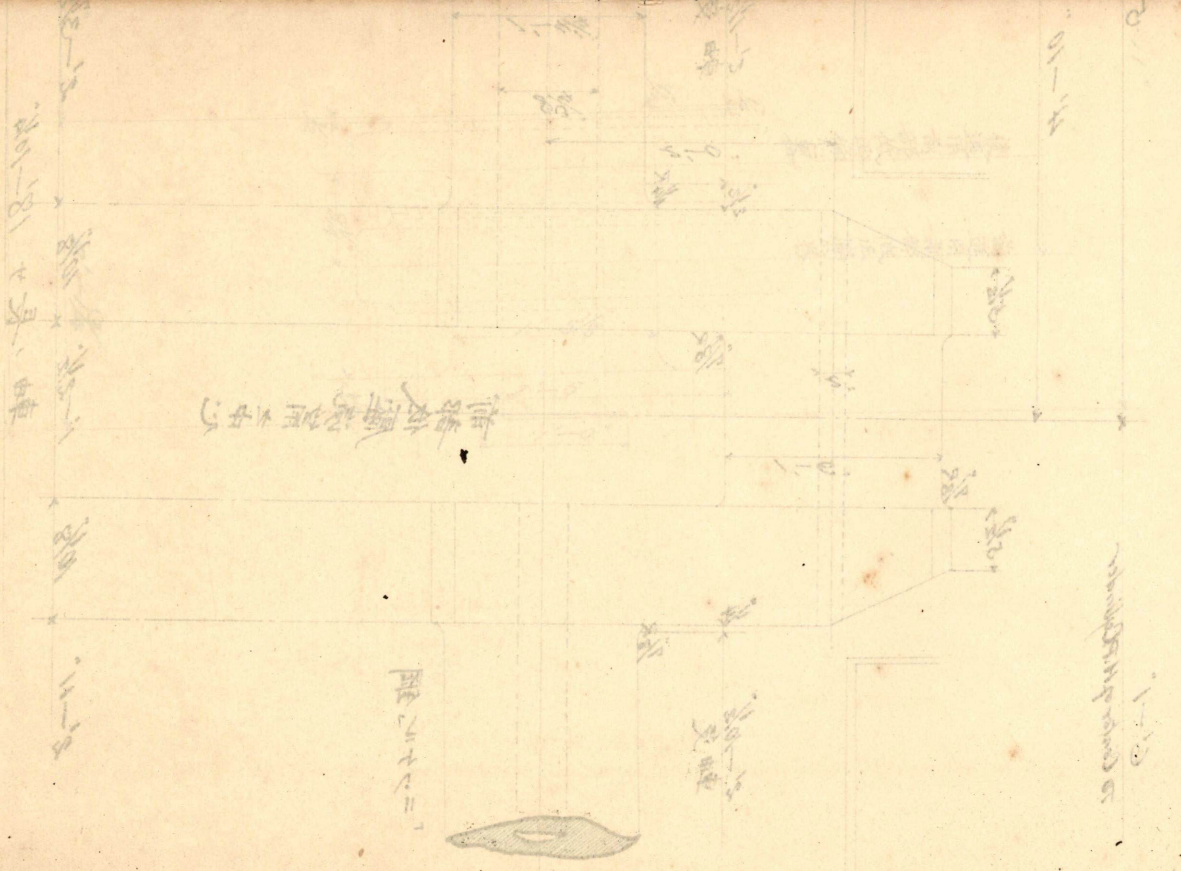
第七十八圖



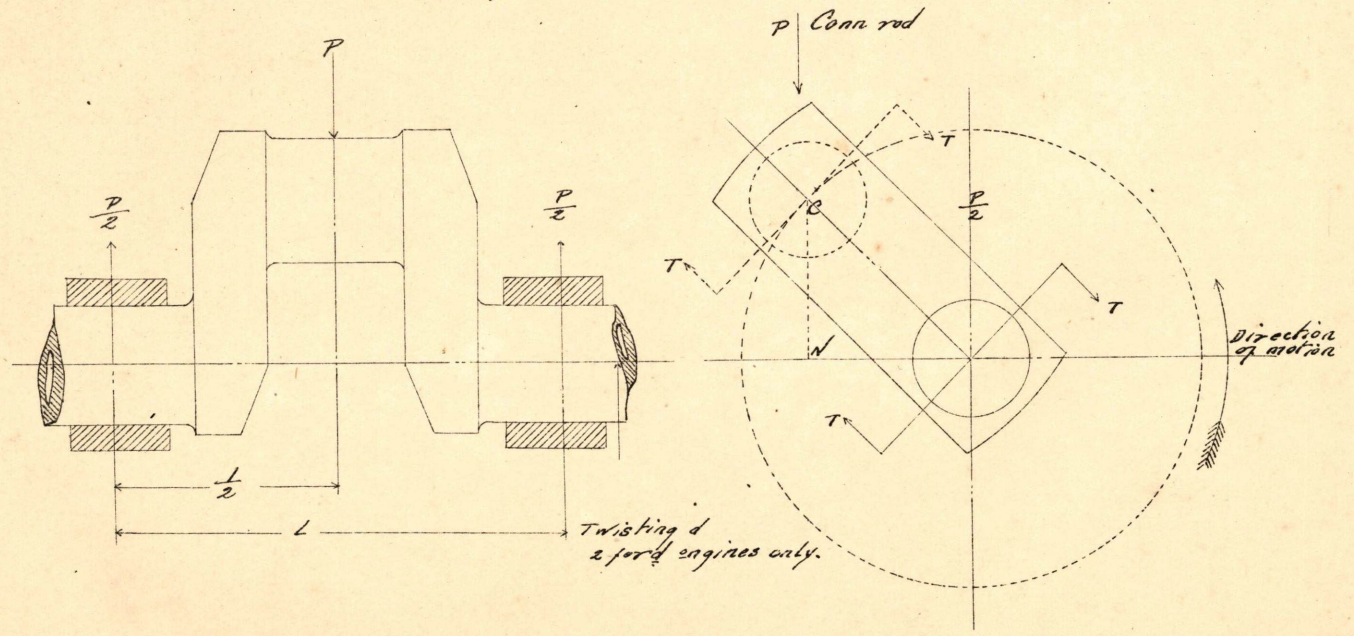
第七十八圖

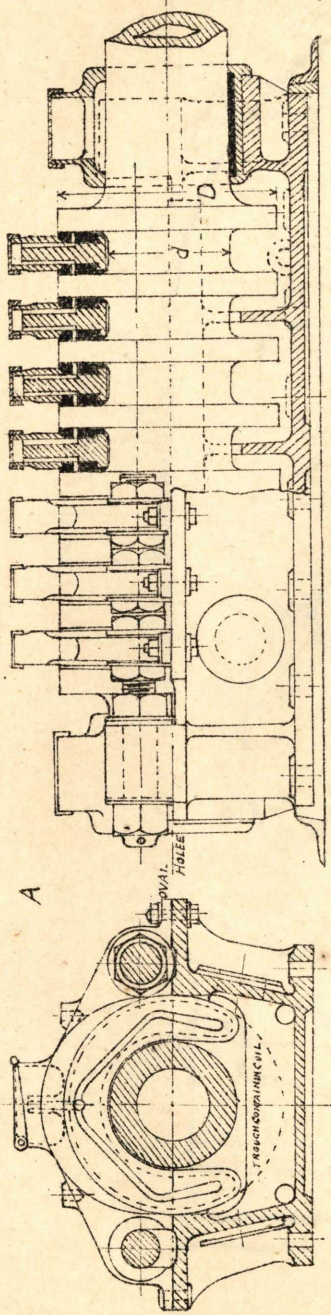
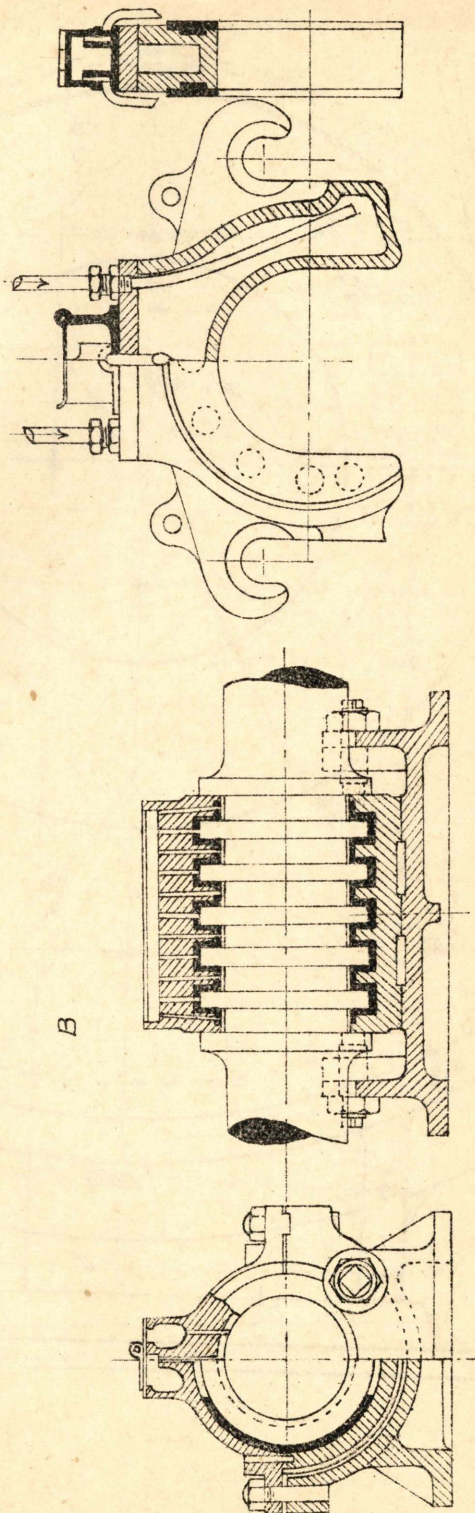


第 八 十 五 號 圖
 曲 柄 機 油 機 軸



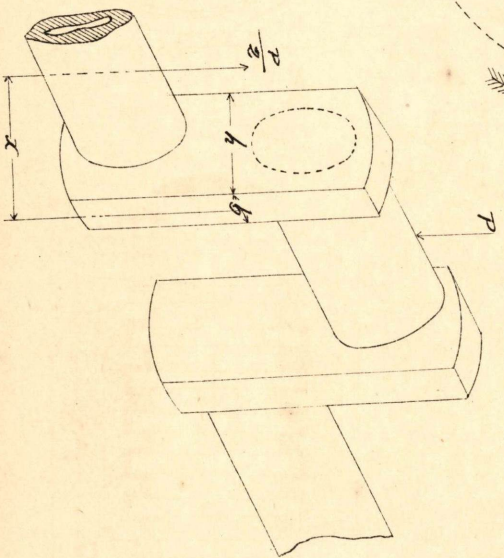
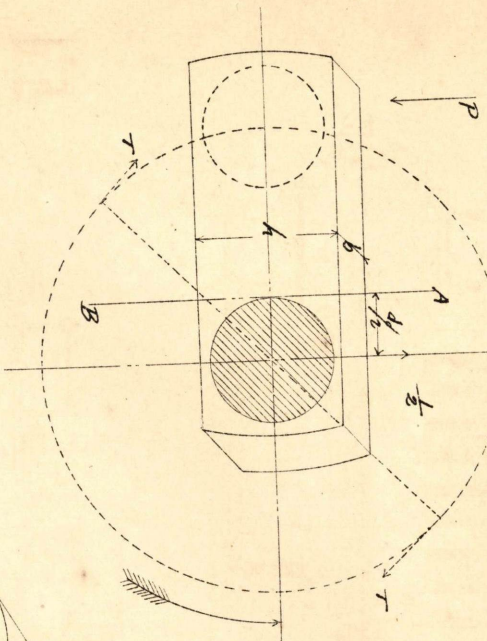
第 七 十 九 圖





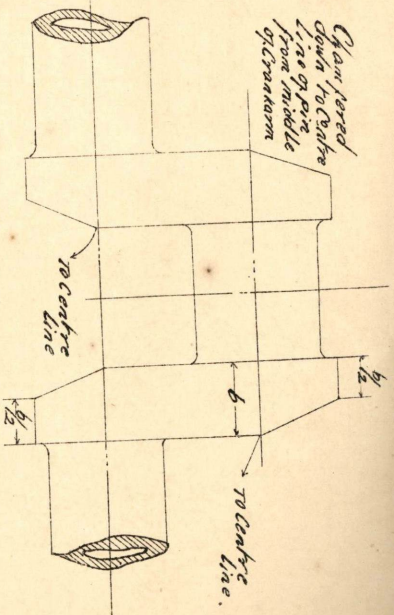
第三十八圖

第八十圖

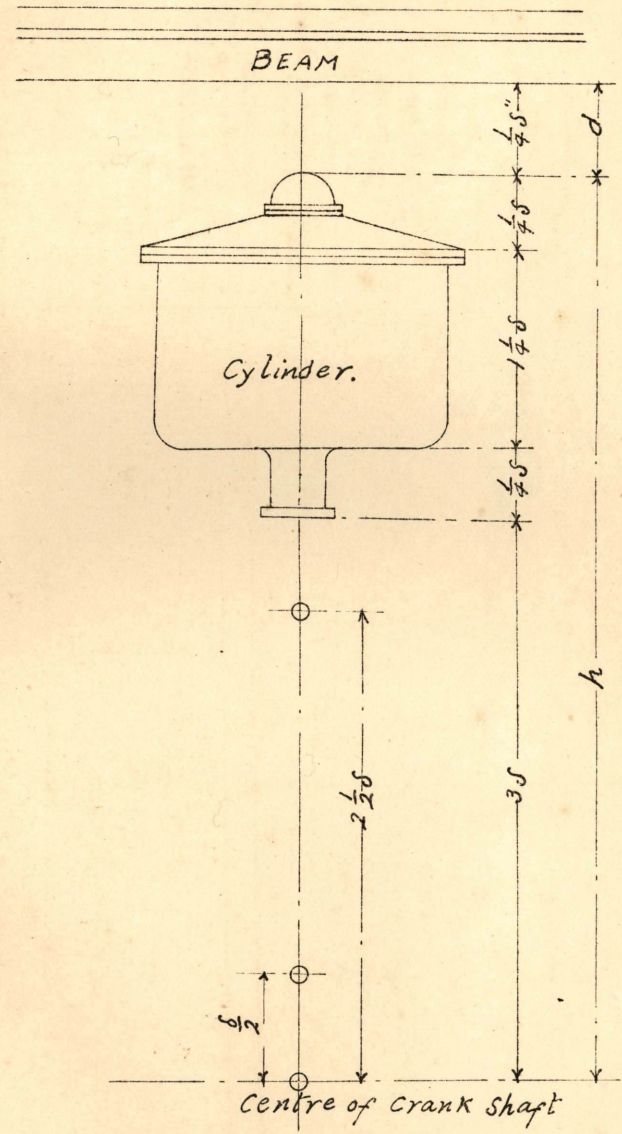
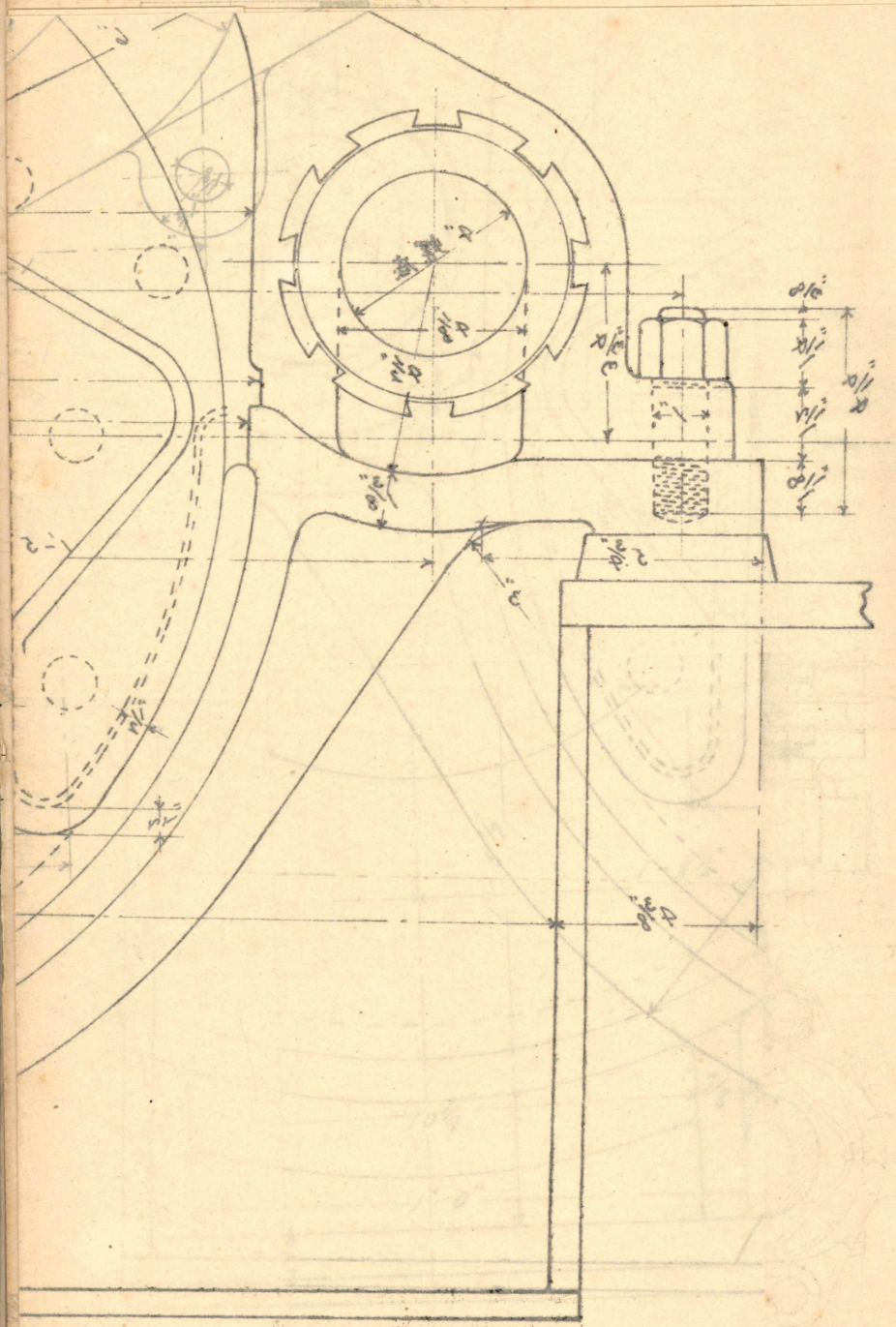


第八十一圖

第八十二圖

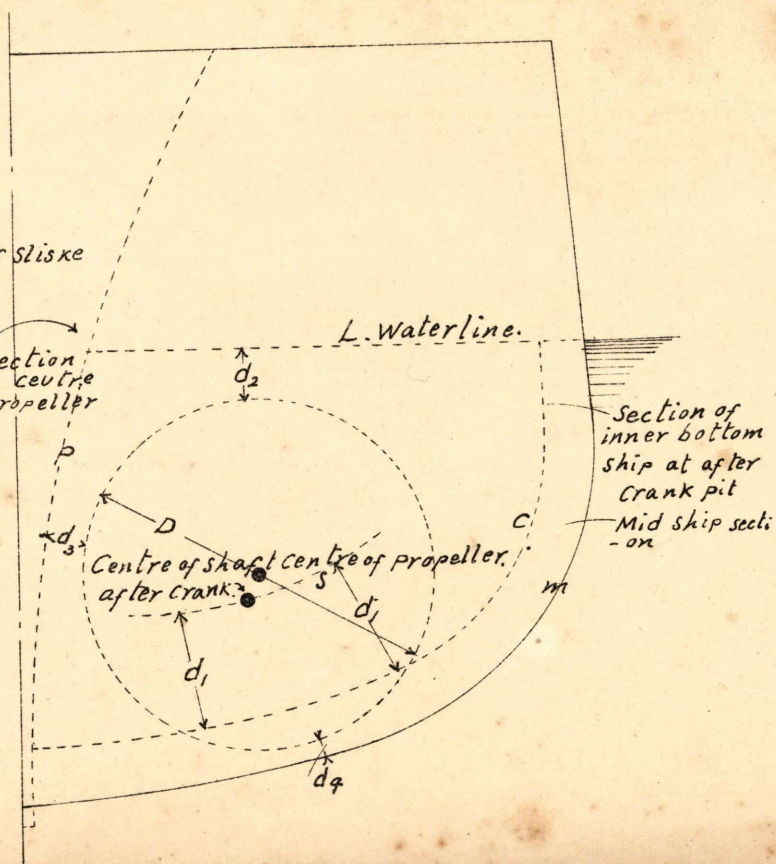


第八十五图



第八十六图

d_1 = Aboir length of slice
 d_2 = Not less than $\frac{D}{70}$
 d_3 = Not less than 12 inches when screw turns out wards of propeller section at centre of propeller
 d_4 = Generally Not less than from 4 to 6 inches.



整理号	
寄贈者名	坂上高平
寄贈年月日	40.5. - 7
巻	1666

丁
〇