

Toward the international peace and security

# Japan Ministry of Defense is Committed to Cooperation with Pacific Island Countries.

Pacific Island Countries are crucial partners that share values on the significance of free and open sustainable maritime order based on the rule of law and have historically deep relations with Japan.


**Q**  
What are characteristics of Pacific Island Countries?


They constitute the core of the Indo-Pacific region.

Only 3 out of 14 countries have their own military force.





**POPULATION**

**Most Populated Country**  
 Papua New Guinea **9.94** million (2021)

**Smallest Populated Country**  
 Niue **1900** (2020)

**LAND AREA**

**Largest Country (Land Area)**  
 Papua New Guinea **460,000** km<sup>2</sup>  
 Japan 378,000 km<sup>2</sup>

**Smallest Country (Land Area)**  
 Republic of Nauru **21** km<sup>2</sup>

## Pacific Island Countries

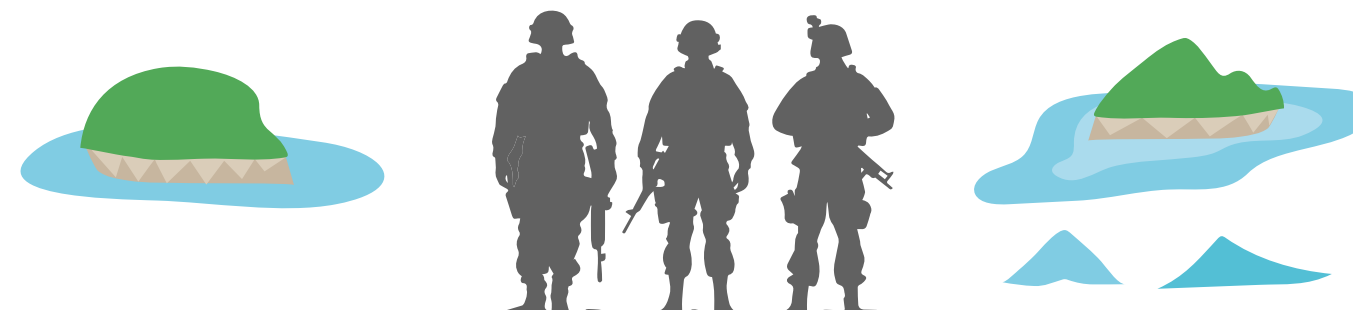
Friendly to Japan and rich in nature

# Facing Three Major Challenges

**1**  
Their lands are small in size and dispersed. With small size of population, economic power is rather limited.



**2**  
With only 3 out of 14 countries having their own military force, Pacific Island Countries have limited self-defense capabilities.



**3**  
They face a variety of natural disasters. Surrounded by sea, they have suffered from the impact of climate change.



**Without Peace and stability of Pacific Island Countries ...  
It will also affect Japan,  
connected with them through Pacific Ocean.**

# With our cooperation to Pacific Island Countries,

We can deepen mutual understanding and trust.

Their military and other capabilities will be enhanced by Japan-Self-Defense-Forces assistance .

Pacific Island Countries with enhanced capabilities will play an important role in maintaining the international peace and stability.

As a result, It will Lead to Peace and Stability of Japan.

## The Ministry of Defense Actively Cooperates with Four Approaches

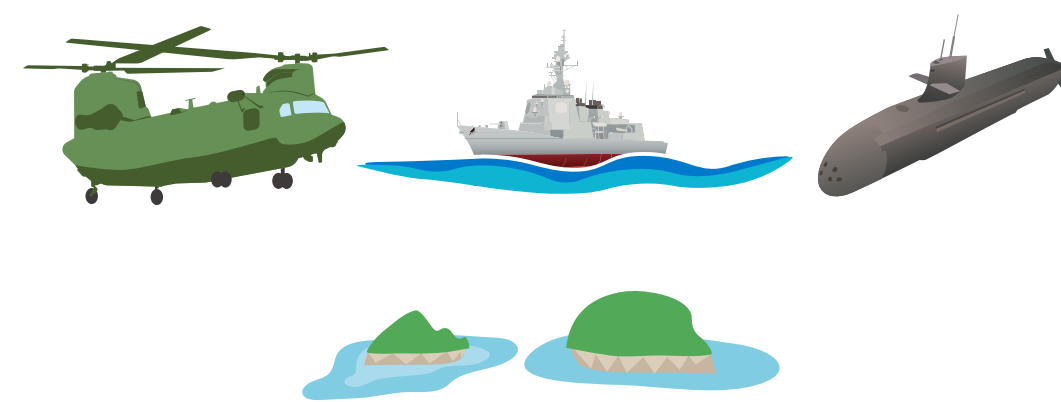
### CLOSE COMMUNICATION

Candid exchange of views and ideas on the best way of cooperation



### MILITARY EXCHANGES

Port calls/stopovers of JSDF vessels and aircraft, and joint



### HUMAN RESOURCE DEVELOPMENT

Enhancement of capabilities of Pacific Island Countries to play a more important role for the peace and stability of the international community



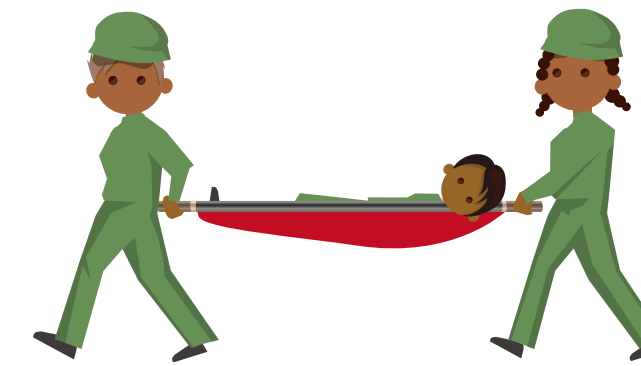
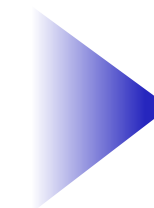
### DISASTER ASSISTANCE

The JSDF provides assistance to affected population



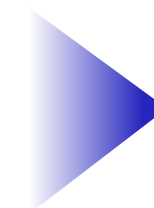
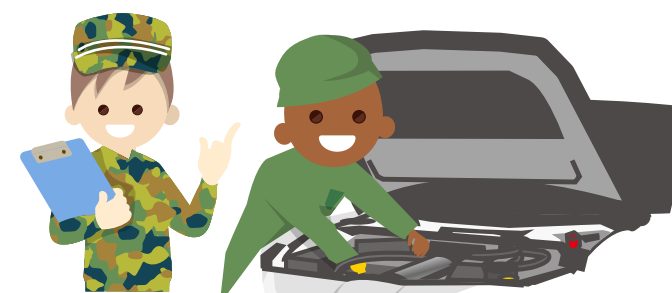
**For Example,**

## FIELD MEDICAL ASSISTANCE TRAINING



Contributing to the improvement of field hospital operation on occasion of natural disasters

## CIVIL ENGINEERING EQUIPMENT MAINTENANCE



Improving the operation rate of heavy machineries, which remove wreckage, on occasion of natural disasters

## MILITARY BAND DEVELOPMENT

Showing how to play musical instruments



Performing at official events and encouraging the people (In PNG)

## INTERNATIONAL DISASTER RELIEF ACTIVITY



Transporting supplies with JSDF vessels and aircrafts

**JMOD will continue to commit to international peace and stability through close cooperation with Pacific Island Countries.**