

Integrated Information Warfare in the Three Security Documents

National Security Strategy

VI Strategic Approaches Prioritized by Japan

(4) Strengthening Efforts to Seamlessly Protect Japan in All Directions

(v) Strengthening Intelligence Capabilities for Japan's National Security

...In addition, from the perspective of **bolstering the ability to respond to information warfare in the cognitive dimension**, including spread of disinformation, a new structure will be established within the Government to aggregate and analyze information on disinformation and others originated abroad, to strengthen external communications, and to enhance cooperation with non-governmental agencies. Furthermore, strategic communication will be actively implemented in a coordinated manner within the government.

National Defense Strategy

IV Key Capabilities for Fundamental Reinforcement of Defense Capabilities

5 Command and Control and Intelligence-related Functions

...To this end, by FY2027, Japan will **develop information capabilities capable of responding to information warfare including hybrid warfare and in the cognitive dimension**. Japan will also develop near-real-time information gathering capabilities through assets such as satellite constellations. Moreover, in order to effectively respond to information warfare, including the spread of disinformation, Japan will fundamentally reinforce the organization and functions of MOD/SDF, and conduct information sharing and bilateral/multilateral exercises with the ally and like-minded countries.

V The Future of Self-Defense Forces

2 Concept of developing SDF architecture

In addition to collecting and analyzing SIGINT, IMINT, HUMINT, OSINT, etc., **DIH will assume the central role of responding to integrated information warfare with special regard to the cognitive dimension** concerning the defense of Japan and fundamentally reinforce the capability to grasp military activities of other countries in a persistent, continuous and accurate manner and analyzing/dispatching them.

Defense Buildup Program

II Major Programs Regarding SDF's Capabilities

5 Command and Control / Intelligence-related Functions

(3) Responses to Integrated Information Warfare With Special Regard to the Cognitive Dimension

In the international community, emphasis is being placed on information warfare, which is an attempt to create a favorable security environment by influencing the public opinion and decision-making of other countries through disinformation and strategic communications, etc., and minimizing the impact to one's own decision-making, even when conflict has yet to arise. **MOD/SDF will establish a system and posture that ensures the capability to cope with information warfare.**

To this end, the Defense Intelligence Headquarters, which plays a central role in responding to integrated information warfare, will **strengthen the system for information collection, analysis, and communication**. In addition, the following functions will be developed: **automatic collection and analysis of open-source information using artificial intelligence (AI)**, which will enable continuous collection and analysis of information on trends in each country; **automatic collection of information on social networking sites**, etc., to determine the authenticity of information communicated by each country; and **future forecasting functions for estimating the security situation**.

Integrated Information Warfare: Concept

- **Integrated information warfare with special regard to the cognitive dimension**, in the context of the defense of Japan, is interpreted as follows:

"In the context of the defense of Japan, from the current point in time as well as during contingency,

- I. Bolster our intelligence-related functions, attaining all-round information collection capabilities;
- II. Respond to diverse threats, including the dissemination of disinformation by foreign actors, through determining authenticity, intent, etc., and neutralizing harmful actions through various means;
- III. Utilize every opportunity to swiftly and strategically communicate appropriate information through coordination with the ally and partner countries;

thus defending our decision-making process, while preventing and responding to unilateral attempts to change the status quo, and fostering an advantageous security environment. On the other hand, MOD/DIH/SDF will not partake in activities that undermine trust of Japan (ex. dissemination of disinformation, malign influence activities, manipulation)."

Areas to be Addressed (Examples)

1. Continuous information collection and analysis on the military movements of other countries

Collect

- Attain all-round information collection capabilities
- Collect and share information regarding lessons learned from other countries



2. Determine the authenticity of information communicated by other countries

Expose

- Detect propaganda, disinformation, etc.
- Fact-check disinformation, etc.



3. Foster an advantageous security environment in all situations

Battle

- Strategic communications
- Declassification of secret intelligence
- Maintenance of information communication systems; information security



MOD/DIH/SDF will not partake in activities that undermine trust of Japan (ex. dissemination of disinformation, malign influence activities, manipulation)

Reinforcement of Defense Intelligence Headquarters



Defense Intelligence Headquarters:

- Founded in 1997, DIH is MOD's central intelligence agency and Japan's largest intelligence organization
- Its mission is to gather various intelligence including OSINT and analyze movements related to Japan's national security, such as international military situations
- Authorized strength: 2,608 personnel (Uniformed: 1,936 / Civilian: 672)

(As of March 31, 2024)

Provide timely and appropriate intelligence products

Policy Decisions

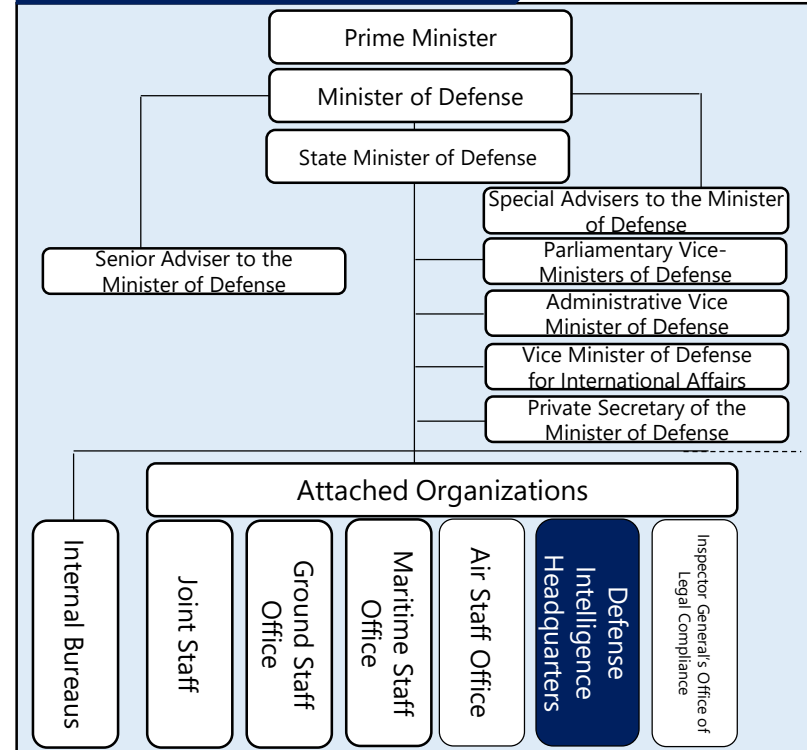


Military Operations

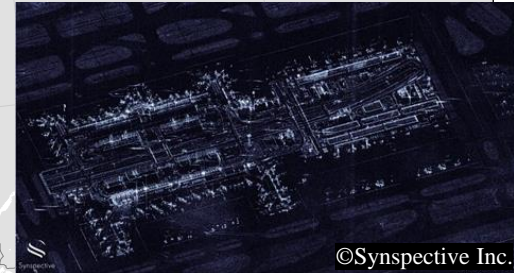
Hold intelligence exchanges to improve the quality of intelligence products



MOD Organization



DIH's Intelligence Sources (Examples)



30° N

15° N

0°

15° S

45° E

60° E

75° E

90° E

105° E

120° E

135° E

45° N

30° N

15° N

0°

15° S

includes material © (2022) Planet Labs PBC.

©Synspective Inc.

Responding to Integrated Information Warfare

Establish a solid framework by FY2027



- Reinforce framework for information collection, analysis, and dissemination
- Establish automatic OSINT collection and analysis capabilities utilizing AI
- Establish system for automatically collecting social media information, etc., to determine the authenticity of information communicated by other countries
- Establish future forecasting functions for estimating the security situation



SDF: Reorganization of major unit



Ground SDF



Maritime SDF



Air/Space SDF

Establish new units