



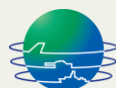
# JAPAN

## Ministry of Defense

XXXXXXXXXX  
XXXXXXXXXX  
XXXXXXXXXX  
XXXXXXXXXX



JAPAN



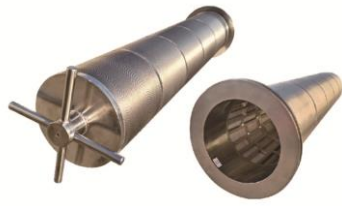
ATLA  
Acquisition, Technology &  
Logistics Agency



## KANAGAWA KIKI KOGYO CO., LTD.

### Notch Wire Element

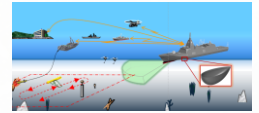
Notch Wire Element is the heart of our filter system to remove foreign objects. This element has robust construction and accurate filtration, therefore, this is used semi-permanently without short regular replacement.



## Hitachi,Ltd.

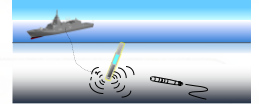
### Mine Hunting Sonar System(OQQ-11)

This system transmits and receives ultrasonic waves through the acoustic sensor equipped at the bottom of Mogami-Class Frigate that searches for underwater mines in the sea.



### Anti Torpedo Acoustic Jammer(Hand Throwing type)

This equipment is thrown from surface ships, send wide-area signals into the sea, and acoustically deceive torpedoes.



## Fujitsu Limited

### Collaboration Table

The console enables information sharing, planning, and rapid decision support on the ship.(4K Large Screen/Touch Panel Display)



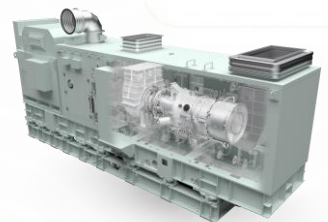
### ONBOS Artificial Intelligence solution

Fujitsu contributes to the advancement of ISR missions by utilizing AI techniques.

## Kawasaki Heavy Industries, Ltd.

### M7A-05 Gas Turbine Generator Set

We introduce propulsion devices and gas turbine generators and other naval vessel equipment manufactured and delivered to Japanese naval vessels. We contribute to the safety of the sea with high technology and quality.



## NEC Corporation

### UNICORN (UNified COMplex Radio aNtenna)

Integrated multiple antennae, silhouette pursuing low RCS, advanced stealth technology required for the mast of brand-new frigates is realized by gathering Japanese technologies. Introducing UNICORN, the embodiment of excellent technologies.



## Mitsubishi Heavy Industries, Ltd.

### Upgraded Mogami-Class Frigate

"Upgraded Mogami" is superior in low signatures design, high speed(30+kt), automation and low-manning (approx.90), improved air defense capability and survivability, reduced lifecycle cost, mine hunting capability etc.

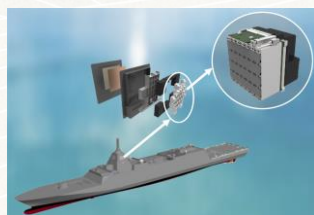


## Mitsubishi Electric Corporation

### Smart Block Module

Mitsubishi Electric is a major electronics manufacturer providing cutting-edge defense technologies to the JMOD for over half a century.

The Smart Block Module realizes AESA radar to be advanced, which is a main component of the Naval X-band multi-function radar, OPY-2 developed by MELCO for the FFM MOGAMI Class.



## Technical Cooperations

 KANAGAWA KIKIKOGYO CO.,LTD.

  
Inspire the Next



  
Powering your potential

  
Orchestrating a brighter world



