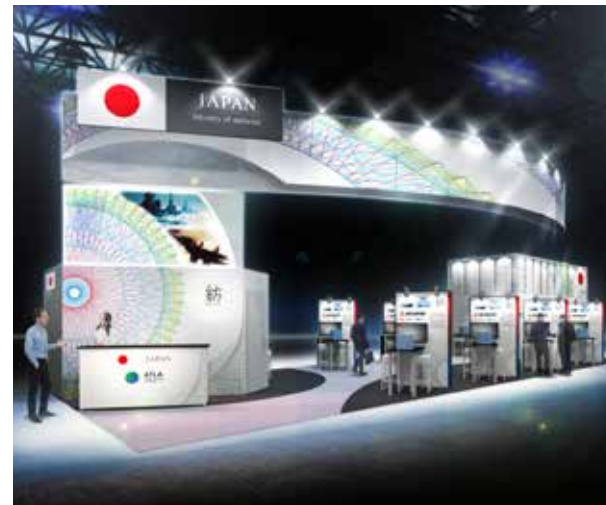


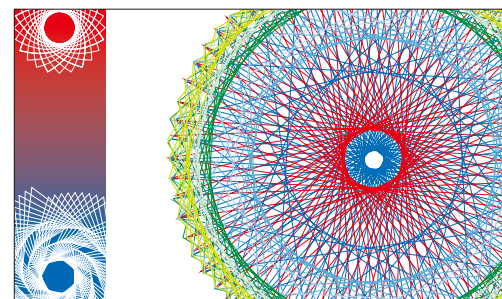
紡  
WEAVE



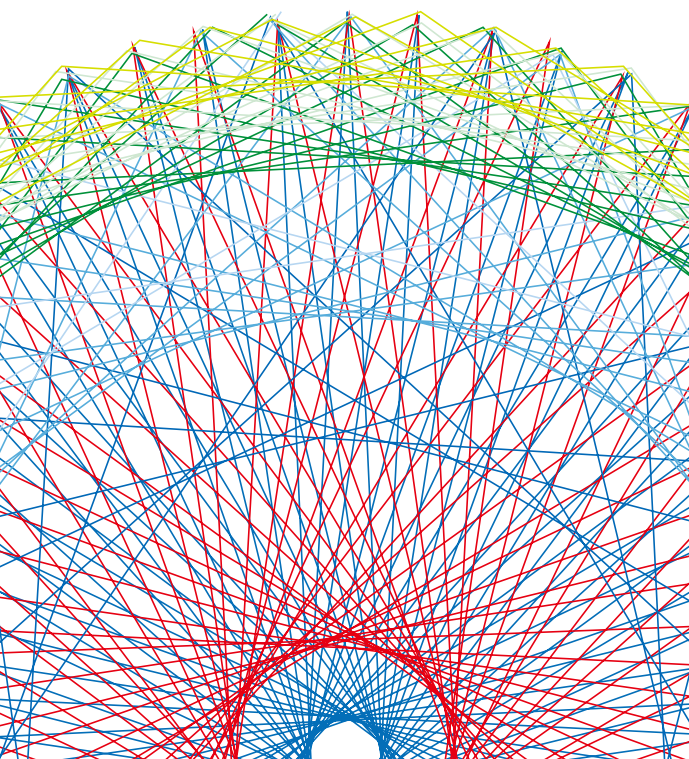
### Main Concept

紡  
WEAVE

紡 (Tsumugu) is a Japanese word that describes weaving threads, and also reflects our belief that Japan's defense technology will weave closer co-operation and global security. ATLA has been promoting the transfer of Japanese defense equipment & technology in order to strengthen co-operation with like-minded overseas partners. We hope to further strengthen these relationships through our appearance at DSEI. ATLA's goal is to build peace and stability by enhancing regional solidarity, and technical cooperation based on Japan's defense technology.



Key Visual



### Message from ATLA

Excellent defense equipment is made of excellent components and parts. ATLA booth displays not only cutting-edge technology, but also various components and parts manufactured by Japanese companies which their quality is proved by the precise craftsmanship handed down over the centuries. We sincerely hope that this exhibition will be a good opportunity for the visitors to once again realize the advanced technology and high quality of Japanese products.

### About ATLA

The ATLA is a new organization which was established in October 2015 at Japan Ministry of Defense (MOD). Overseas defense equipment transfer was added as its new mission, while tasks were integrated such as research and development, project management, and procurement of JSDF's equipment, which MOD was previously taking in charge. In April 2014, year and a half before the establishment of the ATLA, the Government of Japan enacted the "Three Principles on Transfer of Defense Equipment and Technology" and established standards and procedures of defense equipment transfer in order to conform to the new security environment. Overseas transfer will be properly promoted in accordance with the new three principle, and it would contribute to stable peace and international cooperation more than ever. The ATLA is an agency which unitedly promotes the defense equipment transfer at Japan MOD.

### ATLA MOVIE



[https://www.mod.go.jp/atla/en/policy/defense\\_equipment.html#guides\\_and\\_movies](https://www.mod.go.jp/atla/en/policy/defense_equipment.html#guides_and_movies)

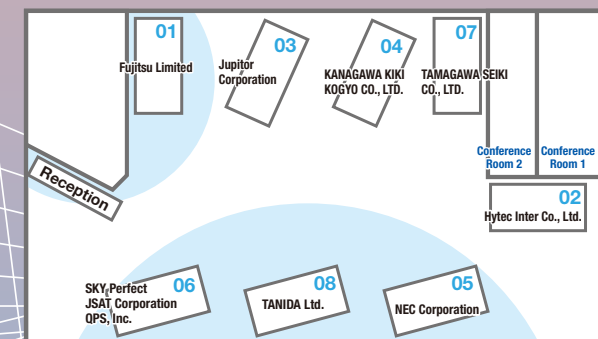
### Technical Cooperations



Orchestrating a brighter world



### MAP



## 01 | Fujitsu Limited

### Artificial Intelligence (AI) for ISR Digital Transformation



Fujitsu delivers Digital Transformation to ISR missions with AI solutions ; The ONBOS CL/IS is suitable for an ISR activity in long-to-intermediate ranges, classifying targets based on images captured by ISAR. The ONBOS CL/E is suitable for it in intermediate to short ranges, auto-detecting & classifying targets based on Electro-Optical images.

## 02 | Hytec Inter Co., Ltd.

### 4K Low Latency / Narrowband Video Encoder/Decoder



Our premium solution LLC-4000 enables 4K Real Time Video over Satcoms and Tactical Radio networks. It delivers high quality actionable video for improved situational awareness, reconnaissance and C2 operations.

## 03 | Jupiter Corporation / ALAE Engineering Co., Ltd.

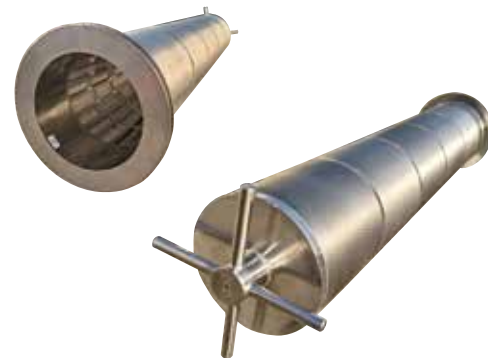
### Aeromedical Evacuation Unit Type2



Aeromedical Evacuation Unit Type 2 is a container used to evacuate seriously ill or injured individuals and can be mounted on a C-130H or C-2 transportation aircraft. Once medical equipment and materials are installed within the unit, it has advanced medical monitoring and paramedic capabilities on par with an ICU.

## 04 | KANAGAWA KIKI KOGYO CO., LTD.

### Notch Wire Element



Notch Wire Element is the heart of our filter to remove foreign objects. This element has robust construction and accurate filtration, therefore, this is used semi-permanently without regular replacement. Also, our filter realizes reduce workload by easy cleaning with auto backwashing system. Our filter, which is equipped for final process of filtration line, contributes your ship toward long lifetime and reducing manpower.

## 05 | NEC Corporation

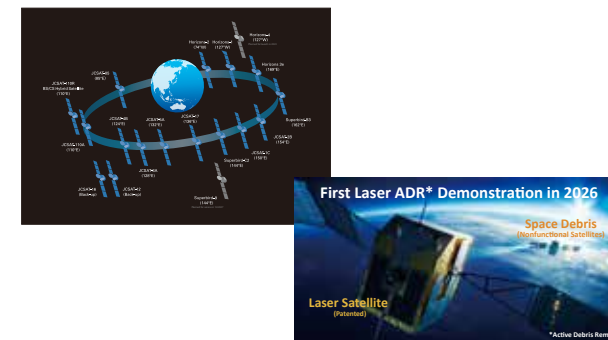
### Underwater Acoustic Transducer, Fixed-APA Tx/Rx Modules



Under the Japan-US FMS program, NEC developed the transducer (TR-343J) that is equivalent to the US made transducer (TR-343) and obtained US Navy certification to install on the Maritime Self-Defense Force's Aegis sonar system. NEC designs and provides various types of modules according to the individual specifications of the radar.

## 06 | SKY Perfect JSAT Corporation QPS, Inc.

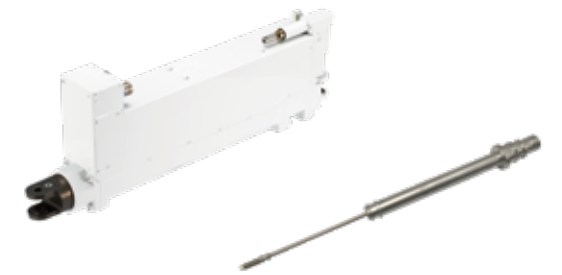
### Contribution to national security with GEO satellites



SKY Perfect JSAT operates 16 GEO satellites over Asia-Pacific, North America and Indian Ocean regions. We provide satellite capacity for government usage overseas and space-data intelligence from analyzing earth observation satellite imagery. We are also engaged in development of LEO data business in partnership with iQPS, operator of small SAR satellites. (52 words).

## 07 | TAMAGAWA SEIKI CO., LTD.

### Actuator and Linear / Rotary Sensor for driving and positioning control



Linear Variable Differential Transformer: linear position sensing for Flight control actuator, Pilot control system, Servo valve, Engine control etc. Electrical Mechanical Actuator: Our core technology's integration with motor, sensor, electric circuit, precise parts machining, utilized for Landing gear control, Flight controls, Door/Hatch control, Ejection seat control etc.

## 08 | TANIDA Ltd.

### Generator Gearbox Housing of Aero Engine



Generator Gearbox Housing cast by 3D printed sand core Material : Aluminum alloy AMS4215 (C355-T6) Size : 450 x 400 x 400 mm (17.7 x 15.7 x 15.7 inch) Weight : 17kg (37.5lb)